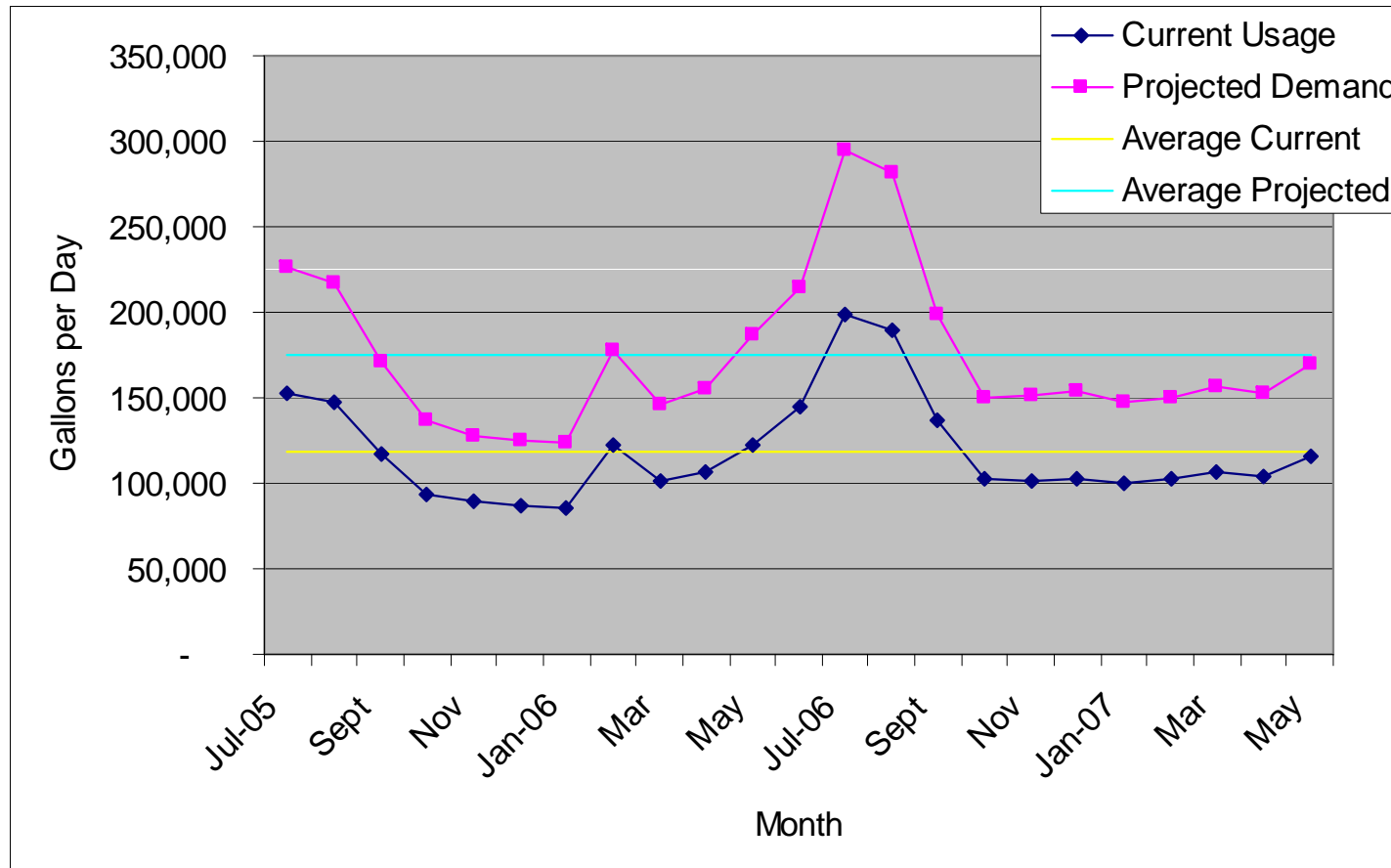


# Potable Water

## Current Usage vs. Projected Demand



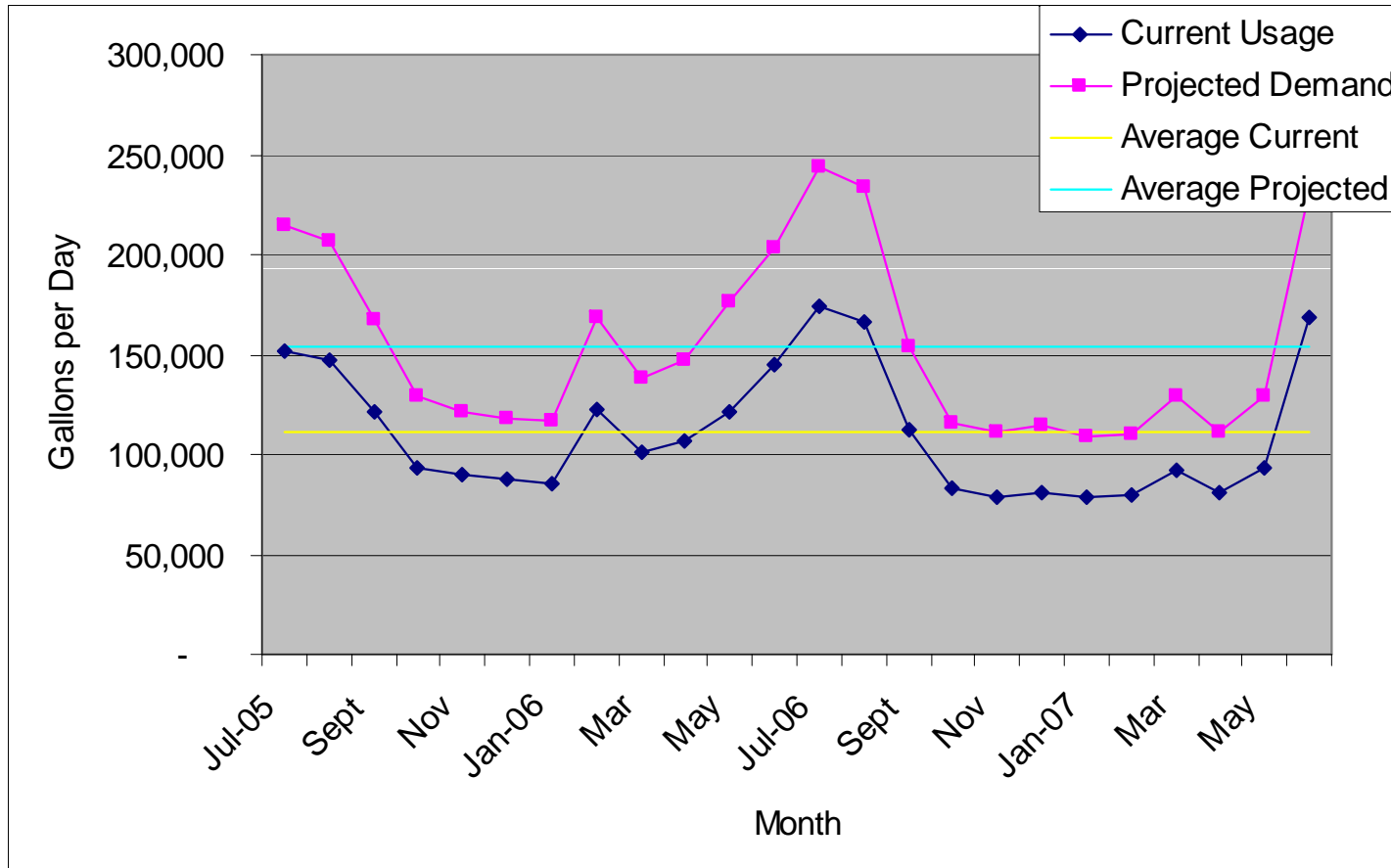
**Current Usage** is based upon utility records from July 2005 to June 2007 and is a combined total of the existing State Penitentiary and MRCC.

**Projected Demand** represents the anticipated utility demand trend for a total population of 1,000 inmates.

**Average Projected** represents a 47% increase in the current average utility usage.

# Sanitary Sewer

## Current Usage vs. Projected Demand



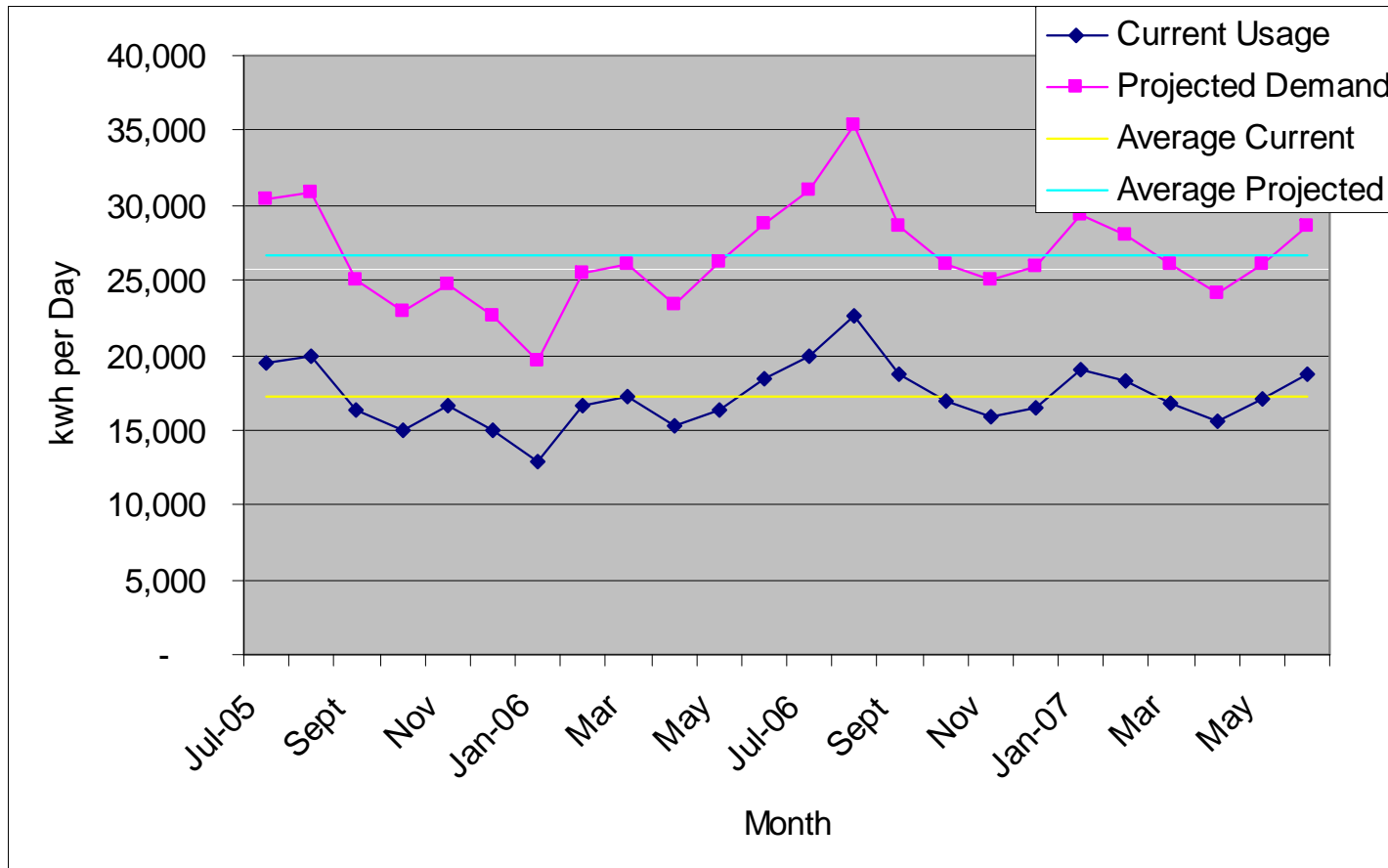
**Current Usage** is based upon water meter reading records from July 2005 to June 2007 and is a combined total of the existing State Penitentiary and MRCC.

**Projected Demand** represents 90% of the anticipated water supply demand for a total population of 1,000 inmates.

**Average Projected** represents a 40% increase in the current average utility usage.

# Electrical Supply

## Current Usage vs. Projected Demand



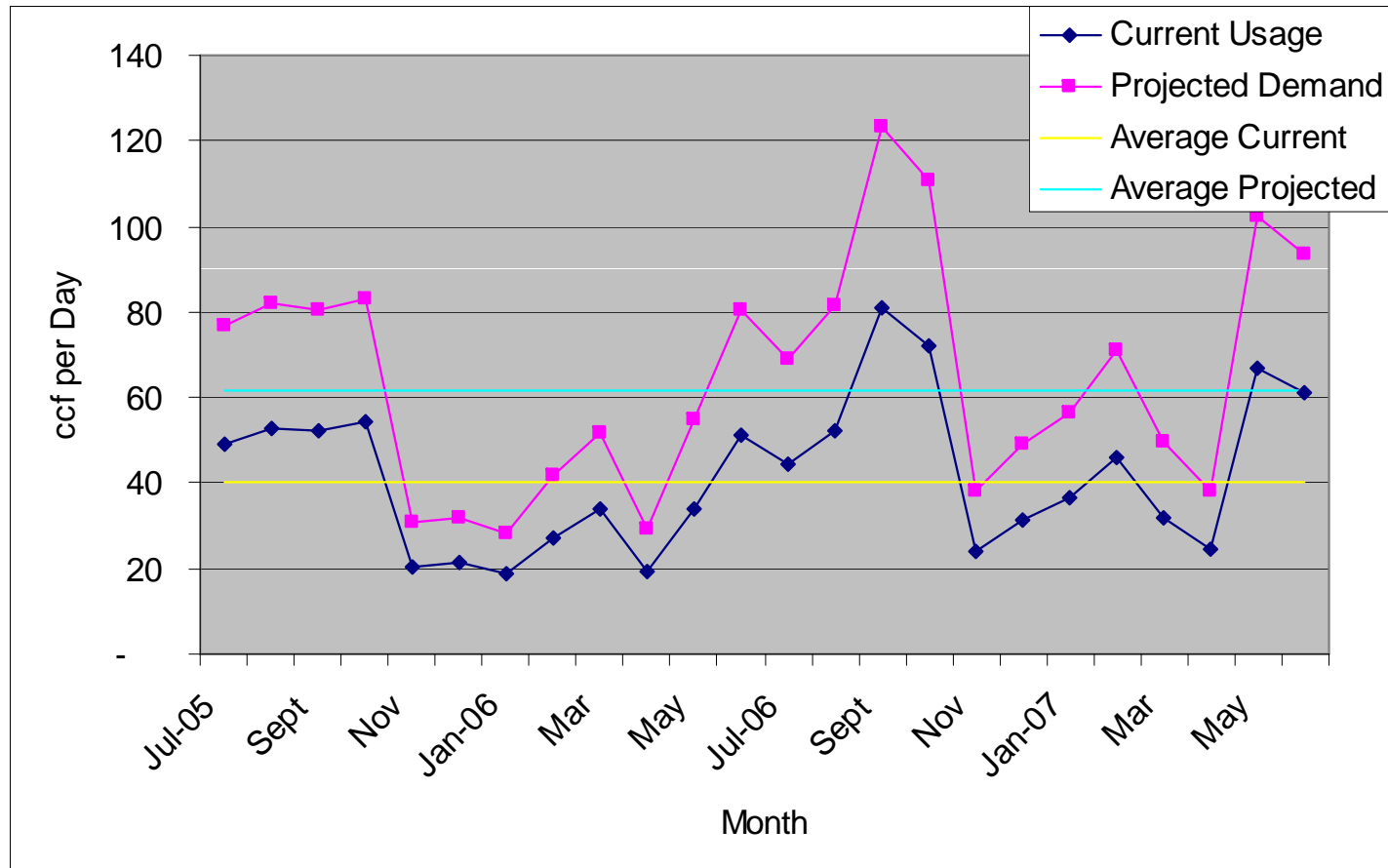
**Current Usage** is based upon utility records from July 2005 to June 2007 and is a combined total of the existing State Penitentiary and MRCC.

**Projected Demand** represents the anticipated utility demand for a total population of 1,000 inmates.

**Average Projected** represents a 54% increase in the current average utility usage.

# Natural Gas Supply

## Current Usage vs. Projected Demand



**Current Usage** is based upon utility records from July 2005 to June 2007 and is a combined total of the existing State Penitentiary and MRCC.

**Projected Demand** represents the anticipated utility demand for a total population of 1,000 inmates.

**Average Projected** represents a 54% increase in the current average utility usage.