

NDSU

North Dakota Forest Service



**ENGROSSED SB 2003
HOUSE APPROPRIATIONS
EDUCATION AND ENVIRONMENT DIVISION
Representative Nathe, Chair**

Forestry Supports the Health, Safety and Economy of North Dakota

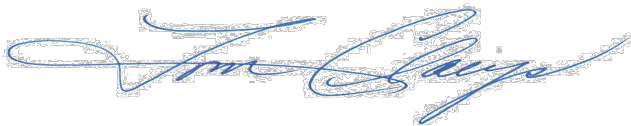
2025-2027 Biennial Budget Request

TOM CLAEYS, STATE FORESTER
March 12, 2025

A Message from the State Forester

The NDSU-North Dakota Forest Service is organized under the North Dakota Board of Higher Education. The agency is administered by a state forester who reports to the president of North Dakota State University and supports the land grant mission in public service. The mission of the North Dakota Forest Service is to “*care for, protect and improve forest resources to enhance the quality of life for future generations.*”

This 2025-2027 Biennial Budget Request summary provides the information requested to determine funding levels for forestry programs benefiting communities, rural landowners, soil conservation districts, rural fire districts, schools and citizens of North Dakota. Please feel free to contact us at any time for additional information.



Tom Claeys, State Forester

CONTACT

Tom Claeys, State Forester
NORTH DAKOTA FOREST SERVICE
916 East Interstate Avenue, Suite 4
Bismarck, ND 58503
Thomas.Claeys@ndsu.edu
Telephone: (701) 328-9945
www.ndsu.edu/ndfs

CONTACT

Dr. David Cook, President
NORTH DAKOTA STATE UNIVERSITY
Department 1000
PO Box 6050
Fargo ND 58108-6050
David.J.Cook@ndsu.edu
Telephone: (701) 231-7211
www.ndsu.edu

STATUTORY RESPONSIBILITIES

The State Forester's goals are aligned with the authority granted under North Dakota Century Code 4.1-21, 18-02, 18-14, and 57-57 to meet the forestry needs of the state.

4.1-21 State Forester

- Supervise the raising and distribution of seeds and forest tree planting stock.
- Promote practical forestry and compile and disseminate information relative to practical forestry to landowners, community groups, schools, and other organizations.
- Encourage the development, use, and wise stewardship of forest resources.
- Provide assistance to landowners, producers, and public bodies relating to forestry, reforestation, protection of forest resources, prevention and suppression of fires, planting of trees and shrubs, and the growing, harvesting, marketing, and management of forest resources.
- A state nursery, under the direction of the state forester, must be maintained at Towner. The nursery shall propagate seeds and forest tree planting stock adapted to the climatic conditions of this state.

18-02-07 Cooperation of state forester and other agencies - Fire and forest protection

18-14 Interstate compact for the prevention and control of wildland fires

57-57 Forest Stewardship

State Forester's Goals

- To positively impact forest-based economic growth and sustainability of communities by promoting the wise use of natural resources.
 - To improve the protection of people, property and natural resources by enhancing interagency cooperation in wildfire management.
 - To support informed decision-making and foster individual responsibility in stewards of all ages by raising public awareness about natural resource values.
 - To meet the forest and conservation tree planting needs of private and public landowners by producing and marketing high quality nursery stock.
 - To meet current societal demands by ensuring the health, productivity and growth of private, community and state forests.
-

ORGANIZATIONAL STRUCTURE

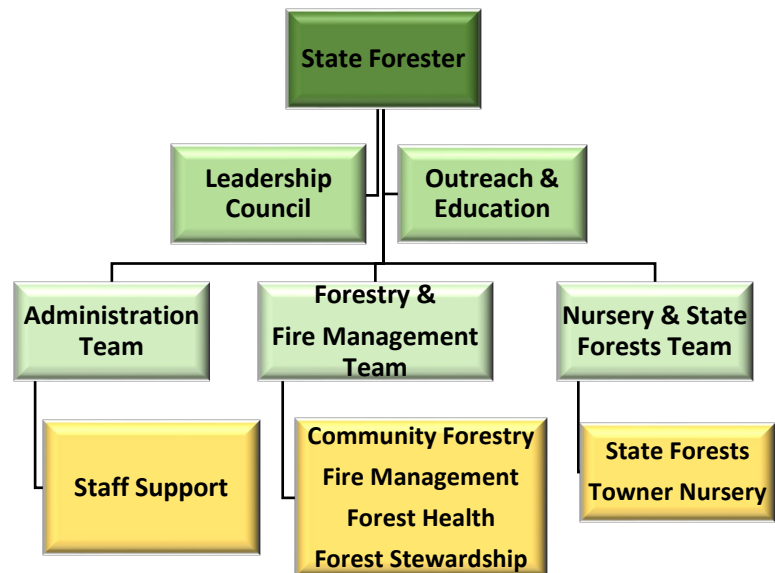
The North Dakota Forest Service organizational structure focuses on increasing program efficiencies, strengthening customer service, promoting teamwork, and encouraging collaboration to address emerging natural resource issues.

The organizational structure is composed of three leadership teams:

- (a) Administration
- (b) Forestry and Fire
- (c) Nursery and State Forests

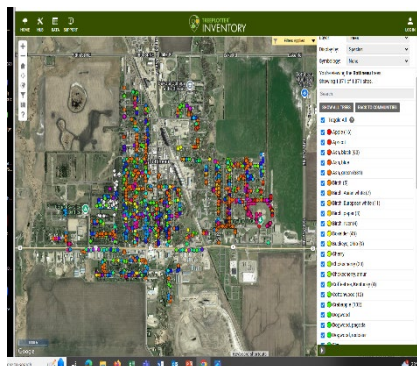
A Leadership Council provides leadership, coordination, accountability and direction for the agency.

The team structure ensures a coordinated focus toward the delivery of services and collaboration across the organization. Teams deal with customer service improvements, communications, program efficiencies and joint partnership initiatives. Teams are also responsible for focusing leadership and resources on priorities identified within the 2020 North Dakota Forest Action Plan.



SUMMARY OF AGENCY SERVICES

A wide variety of customers depend on the North Dakota Forest Service for technical, financial and educational forestry assistance. The state forester administers forestry programs serving communities, rural landowners, soil conservation districts, rural fire districts, schools and citizens of North Dakota. All the programs utilize a voluntary, educational and incentives-based approach to address natural resource needs and customer demands.



Community Forestry focuses on conservation activities in city parks, tree-lined streets or other green spaces within the community. Most of North Dakota's residents live in 372 cities and towns. The Community Forestry Program administers financial assistance programs for tree planting and forestry development projects each year. The agency provides technical assistance for tree planting plans, management plans, shade tree ordinances, pest surveys and tree workshops. The ND TIP Tool helps communities track trees on boulevards, parks, and other public areas.



Fire Management helps protect lives, property and natural resources by training and equipping North Dakota's rural volunteer fire departments. A grant program supports department's needs for training; purchasing or repairing equipment; and vehicles. A companion program loans surplus federal equipment to departments for enhancing firefighting capabilities. The agency provides essential wildland firefighting resources to VFDs when departments exceed mutual aid capacity. NDFS firefighters assist other states and federal and tribal partners during catastrophic wildfire events.



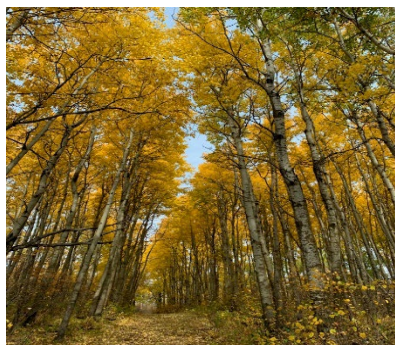
Forest Health ensures the productivity and growth of North Dakota's private, community and state forests. Each year, the agency conducts surveys to assess forest health conditions and trains public and private land managers on insect and disease management such as emerald ash borer, a recently detected invasive pest in the state and a threat to North Dakota's 90 million ash trees.



Forest Stewardship focuses on improving the management of forest resources by educating and assisting private landowners on how to better manage, protect and utilize their native and planted forest resources. This is accomplished through creation of a Forest Stewardship Plan and financial assistance for forest improvement practices. Outdoor Heritage Fund Windbreak Renovation Initiative has provided financial assistance for 392 projects that restore declining field and farmstead windbreaks.



Outreach and Education offers youth and adults the knowledge and skills they need to make wise decisions about the conservation and wise use of North Dakota's forest resources. The North Dakota Forest Service sponsors "Project Learning Tree" workshops for teachers and youth leaders working with students in grades K-12. The program also handles the daily requests for forestry information and the development of educational materials.



State Forests provide wildlife habitat, clean air and water, recreational opportunities, forest products, scenic beauty and other conservation benefits. The North Dakota Forest Service owns five state forests comprising approximately 13,945 acres. State forests play an important role in the economic well-being of several rural communities by attracting hunters, hikers, campers, skiers, snowmobilers, tourists and other outdoor enthusiasts.



Towner State Nursery annually produces conservation tree seedlings to meet the demand for conservation tree planting needs of the state. The trees are used for farmstead, living snow fence, field windbreaks, wildlife, forestry and other conservation plantings. Since 1951, the Towner State Nursery has produced, marketed, and sold over 80 million conservation seedlings. Staff conduct tree improvement evaluations to develop resilient nursery stock adapted to the state's challenging environment.

AGENCY PERFORMANCE MEASURES

2020 Forest Action Plan

The Forest Service 2025-2027 budget will conserve, protect and enhance priority forest landscapes identified in the 2020 North Dakota Forest Action Plan. The plan ensures the care and protection of native forests, conservation tree plantings and community forests by sustaining the agency's emphasis on providing financial, technical and educational assistance to communities, rural landowners, rural fire districts, soil conservation districts, schools and citizens of North Dakota. The plan provides a comprehensive analysis of forest-related conditions, trends, threats and forestry opportunities. Plan development was driven by input and collaboration from stakeholders, partners, and customers to identify needs and priorities.

Accountability Measures

Forestry programs contribute to the Health, Safety and Economy of North Dakota. The 2025-2027 budget request sustains the agency's capacity to provide essential public services including:

1. Outreach and Education focused on 7,003 PreK-12 students and 379 teachers, helping them to make wise decisions about the conservation of trees, forests, and natural resources.
 2. Community Forestry assistance for tree planting and forestry projects in North Dakota's cities and towns. Nearly 70% of North Dakota residents live in a Tree City USA community. There are 52 Tree City USA Communities and 4 tree campus Higher Ed institutions in the state.
 3. Forest Health protection including insect and disease surveys and training to minimize the threat of invasive species like emerald ash borer. North Dakota has 90 million ash trees threatened by emerald ash borer. The pest has now been confirmed in LaMoure County on August 22, 2024.
 4. Forest Stewardship assistance for rural landowners to manage, protect and utilize their native and planted forest resources. Outdoor Heritage Fund Windbreak Renovation Initiative projects are underway with 392 projects that renovate declining field and farmstead windbreaks.
 5. Fire Management for the protection of lives, property and natural resources through training, organizing and equipping North Dakota's 378 rural volunteer fire departments. An average of 440 human caused wildfires burn over 30,000 acres each year.
 6. Towner State Nursery for the annual production of up to 1 million conservation tree seedlings for field and farmstead windbreaks, living snow fences, wildlife and other conservation plantings. A total of 1,552,305 conservation seedlings were produced and sold to soil conservation districts, farmers, ranchers, landowners, and other conservation entities last biennium.
 7. State Forests to provide wildlife habitat, clean air and water, recreational opportunities and forest products. The Forest Service manages 13,945 acres that includes trails, campgrounds, and recreation areas which support the economic well-being and community health of rural communities by providing opportunities for hunters, hikers, campers, skiers, snowmobilers, tourists and other outdoor enthusiasts. The program's 42 miles of trail and 4 campgrounds served 9,699 trail users and 3,363 campers.
-

CHALLENGES, GOALS AND PLANS

Wildland Fire - 2024 was an unprecedented year for wildland fire, the Governor's Dashboard reflects 1,378 fires for 144,411 acres and the NDFS reporting tool shows 793 fires for 180,214 acres. Legislative management study to evaluate the implementation of a regional response model for fire service operations.

Towner Nursery - Production capacity has eroded for many conservation nurseries due to workforce availability and the loss of institutional knowledge and skills associated with inadequate succession planning. Conservation nurseries struggle with retaining a reliable workforce to fulfill labor demanding activities. Historically, Towner Nursery has been fortunate to maintain a relatively stable seasonal workforce, however this labor availability has been slowly declining.

Emerald Ash Borer - North Dakota has an estimated 90 million ash trees. Ash is the most common tree planted in communities, reaching 70% of the tree population in some towns. Green ash represents a large percentage of the state's 55,000 miles of field and farmstead windbreaks and is a major component of the state's native forests.

Recruitment and Retention - Issues include attracting foresters and/or natural resource professionals to the state; benefits/disadvantages of living in small towns vs. larger communities; office space and remote work options; funding to reward exemplary work; and generational differences in the workforce and employee's values.

State Forest Action Plan Revision - The plan serves as a strategic framework to outline priority forest resources, designate important issues, and identify strategies to address challenges and opportunities. It ensures that resources are focused on important landscape areas with the greatest opportunity to address shared management priorities and achieve measurable outcomes.

Relevance - Developing and utilizing web-based communication tools with ESRI. Conveying the impacts of forestry in a relatable, geospatial manner in real time.

EMPLOYEE TURNOVER AND VACANCIES

Since 2018, over half the agency has turned over. Some of the positions have been filled and vacated twice between 2018 and 2024. Currently the agency has 3 vacancies which have been vacant 2 to 32 months. Each position provides forestry expertise to landowners, communities and partners across the state. Positions include Community Forestry Specialist, Forest Stewardship Specialist – Lisbon, and Forest Stewardship Specialist - Walhalla.

2023-2025 REVENUES AND EXPENSES

Funding Sources

Appropriated funding for North Dakota's forestry programs is derived from two sources: the state general fund and income, including the sale of nursery products and contributions from the Trees for North Dakota Trust Fund. The 2023-2025 original appropriated budget for the Forest Service was \$24,779,893 including \$5,638,621 in general funds and \$19,141,272 in special funds. Special funds include \$2,300,000 in estimated income from tree seedling sales and the Trees for North Dakota Trust Fund. General fund authority was increased to \$5,638,621 with \$484,617 in carryover.

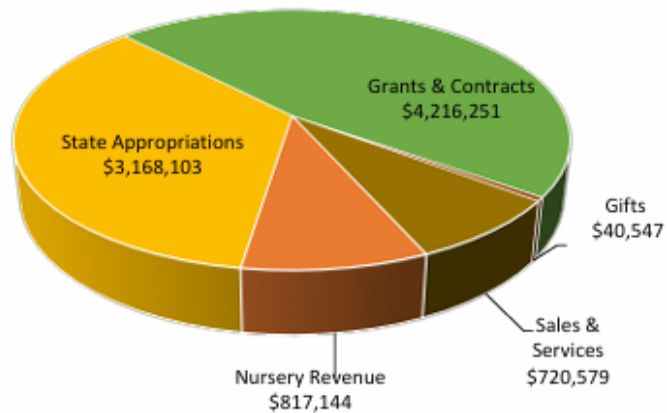
NORTH DAKOTA FOREST SERVICE FY 2024 REVENUES AND EXPENSES

Revenues

Nursery Revenue	\$ 817,144	9%
State Appropriations	\$3,168,103	35%
Grants & Contracts	\$4,216,251	47%
Gifts	\$ 40,547	1%
Sales & Services	\$ 720,579	8%

Grand Total \$8,962,624

FY 2024 Revenues

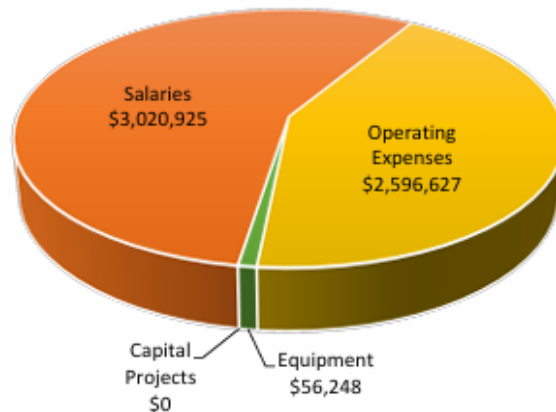


FY 2024 Expenditures

Expenses

Salaries	\$3,395,464	56%
Operating Expenses	\$2,596,627	43%
Equipment	\$ 56,248	1%
Capital Projects	\$ -	0%

Grand Total \$6,048,339



FEES AND CHARGES

State Forests

The agency maintains campgrounds at Lake Metigoshe (Hahns Bay Campground), Strawberry Lake, Pelican Lake and Twisted Oaks Equestrian Campground. Camping fees are \$15.00 per night in all campgrounds. An additional fee of \$5 per horse per night is required at the Twisted Oaks Equestrian Campground. These rates have remained the same since 2017. In 2024, the campgrounds generated \$10,455 in income.

The agency currently has 10 Haying and Grazing Leases in 3 counties (Bottineau, Rolette and McHenry) that total 1,044 acres. In 2024, the leases generated \$19,437 in income.

Towner Nursery

The 2025 Towner Nursery Catalog lists conservation grade seedlings at a price range of \$.95 for bare root to \$1.30 for containerized trees. The average price per tree is \$1.05 and the last increase was in 2023 for 2024 tree sales. Towner Nursery charges 110% of the cost of production. The 10% above cost of production is deposited at the end of each biennium into the State Forester's Reserve Account as outlined in ND Century Code 4.1-21-04.

Fire Management

The North Dakota Statewide Master Cooperative Wildland Fire Management and Stafford Act Response Agreement - Chapter 50 outlines charges for wildland fire equipment and firefighters charged to other agencies and states. In 2024, the agency will bring in \$950,371 for BIA, BLM, and USFS fires and from the states of NM, MT, OR and WY.

2025-2027 BIENNIAL BUDGET REQUEST

The 2025-2027 funding request for the North Dakota Forest Service is \$25,191,311. The General Fund request is \$6,032,368. Other funds are \$19,158,943.

OPERATIONS

The Operations request supports salaries, fringe and operating expenses for 28.0 General Fund FTE, 6.0 Special Fund FTE and 45 seasonal positions that provide essential forestry services. This investment leverages over \$17 million in external grants and contracts for voluntary and incentives-based forestry programs to address natural resource issues and customer needs identified in the Forest Action Plan.

Operations fund public forestry services provided by the North Dakota Forest Service through field offices at Bismarck, Bottineau, Fargo, Lisbon, Towner and Walhalla. Expenditures include costs associated with servicing field forestry requests statewide from rural landowners, communities, schools and citizens. Operations fund emergency wildland firefighters who protect lives, property and natural resources threatened by an average of 440 human caused wildfires that burn over 30,000 acres each year. Operations fund training, organizing and equipping rural fire districts, as well as support for a Forest Service strike team of four Type 6 and one Type 3 wildland engines. Operations fund tree production at Towner State Nursery.

Towner State Nursery provides tree seedlings for conservation and forestry plantings in every county of North Dakota. The estimated revenue from generated from trees sales at Towner State Nursery is \$1,400,000. Other estimated revenue includes \$900,000 for Trees for North Dakota grants. The Trees for North Dakota Trust Fund provides tree planting grants and supports promotional, educational and fundraising projects associated with strengthening the tradition of tree planting and management in North Dakota.

General Funds	\$6,032,368
Special Funds	\$19,158,943
Total Operations	\$25,191,311

Base Adjustments

The Forest Service 2025-2027 budget includes IT rate Adjustments, Employer Retirement Contributions, Target Market Equity and Inflation Factor Increases.

IT Rate Adjustments - General Fund	\$5,078
IT Rate Adjustments - Special Funds	\$17,002
Employer Retirement Contribution - General Fund	\$8,411
Employer Retirement Contribution - Special Funds.....	\$669
Target Market Equity - General Fund.....	\$204,558
Inflation Factor Increase - General Fund	\$175,700

Optional Requests

Conservation Tree Improvement Initiative	\$350,000
Emerald Ash Borer Mitigation.....	\$950,000

CAPITAL ASSETS

The 2025-2027 capital assets budget provides necessary repairs for office, shop, storage and recreational buildings at Bottineau, Lisbon, Towner and Walhalla. Recreational improvements are also located on the State Forests. The budget includes extraordinary repairs and equipment over \$5,000. The total 2025-2027 base budget general fund request for Capital Assets is \$118,728. Capital assets consist of 43 office, shop and storage buildings. The buildings are valued at \$4,616,956. Building ages vary from 2 years to 89 years.

🌲 Capital Assets\$118,728

Equipment Over \$5,000

The request for equipment over \$5,000 is \$56,248, an amount equal to the 2017-19, 2019-21, 2021-23 and 2023-25 base funding. Equipment would include a skid steer and attachments for the State Forests Program.

🌲 Equipment over \$5,000\$56,248

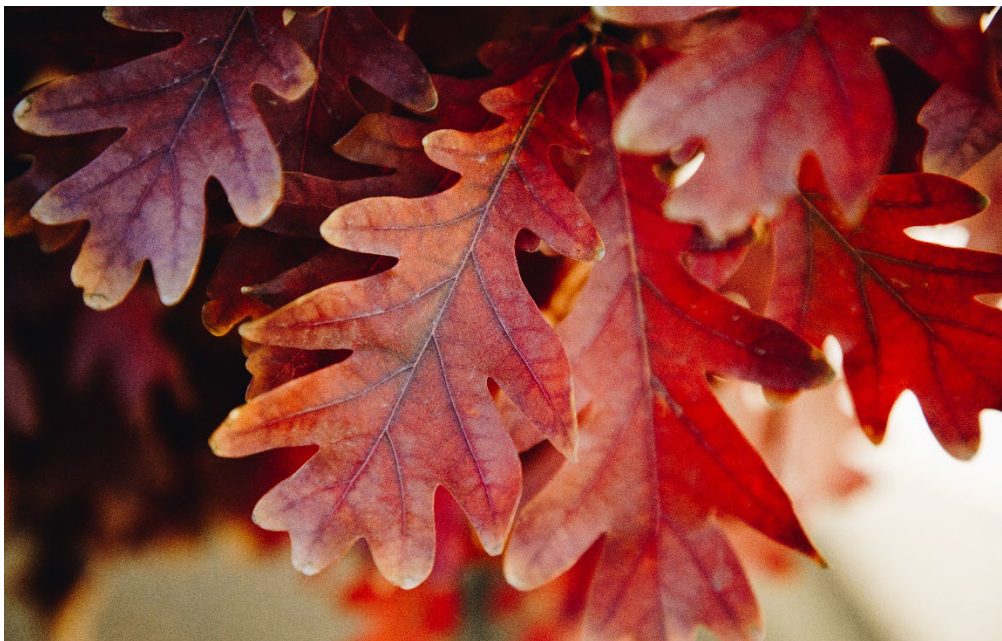
Extraordinary Repairs

Extraordinary repairs include \$62,480 for interior renovations at the Towner State Nursery Office. Total 2017-2019, 2019-2021, 2021-23 and 2023-25 extraordinary repairs budget was \$62,480.

🌲 Extraordinary Repairs\$62,480

CAPITAL PROJECT REQUEST - None

The Forest Service is not requesting a capital project within the 2025-2027 budget.



2025-2027 Funding Request – SB 2003

ND Forest Service					
Comparison of SBHE General Fund Budget Request					
to Executive Recommendation and Engrossed SB2003					
	ND Forest Service				
	SBHE 2025-27 GF Budget Request	Burgum Executive Recommendation	Armstrong Executive Recommendation	Senate Recommendations (Engrossed SB2003)	Senate Recommendation Over (Under) Budget Request
General Fund Appropriation	\$ 5,638,621	\$ 5,638,621	\$ 5,638,621	\$ 5,638,621	\$-
IT Rate Adjustment	\$ 5,078	\$ 5,078	\$ 5,078	\$ 5,078	-
Employer Retirement Contribution	\$ 8,411	\$ 8,411	\$ 8,411	\$ 8,411	-
Target Market Equity	\$ 204,558	\$ 204,558	\$ 204,558	\$ 204,558	-
Inflation Factor Increase	\$ 175,700	\$ 175,700	\$ 175,700	\$ 175,700	-
Total General Fund Appropriation	\$ 6,032,368	\$ 6,032,368	\$ 6,032,368	\$ 6,032,368	-
2025-27 Adjustments:					
2025-27 - Burgum 4%/3% & Armstrong 3%/3% Salary & Fringe Benefits		\$ 237,815	\$ 194,408	\$ 194,408	\$ 194,408
Health Insurance increase		\$ 168,148	\$ 168,148	\$ 168,148	\$ 168,148
Emerald Ash Borer Mitigation (One-time)		\$ 950,000	-	-	-
Total Adjustments	-	\$ 1,355,963	\$ 362,556	\$ 362,556	\$ 362,556
Total Base/Adjustments General Fund	\$ 6,032,368	\$ 7,388,331	\$ 6,394,924	\$ 6,394,924	\$ 362,556
Special Fund Appropriation	\$ 19,141,272	\$ 19,141,272	\$ 19,141,272	\$ 19,141,272	-
IT Rate Adjustment	\$ 17,002	\$ 17,002	\$ 17,002	\$ 17,002	-
Employer Retirement Contribution	\$ 669	\$ 669	\$ 669	\$ 669	-
Total Special Fund Appropriation	\$ 19,158,943	\$ 19,158,943	\$ 20,108,943	\$ 20,108,943	\$-
2025-27 Adjustments:					
2025-27 - Burgum 4%/3% & Armstrong 3%/3% Salary & Fringe Benefits		\$ 56,334	\$ 46,045	\$ 46,045	\$ 46,045
Health Insurance increase		\$ 36,032	\$ 36,032	\$ 36,032	\$ 36,032
Emerald Ash Borer Mitigation (One-time)	-	-	\$ 950,000	\$ 950,000	\$ 950,000
Total Adjustments	-	\$ 92,366	\$ 1,032,077	\$ 1,032,077	\$ 1,032,077
Total Base/Adjustments Special Funds	\$ 19,158,943	\$ 19,251,309	\$ 20,191,020	\$ 20,191,020	\$ 1,032,077
				-	
General Fund	\$ 6,032,368	\$ 7,388,331	\$ 6,394,924	\$ 6,394,924	\$ 362,556
Special Funds	\$ 19,158,943	\$ 19,251,309	\$ 20,191,020	\$ 20,191,020	\$ 1,032,077
Total Funding Sources	\$ 25,191,311	\$ 26,639,640	\$ 26,585,922	\$ 26,585,922	\$ 1,394,633
FTE	2023-25 FTE	Current FTE			
	29.0	34.0			

BILLS CONSIDERED BY THE LEGISLATIVE ASSEMBLY

The North Dakota Forest Service has prefiled State Forester sponsored HB 1112 relating to the eligibility of state firefighters, including NDFS firefighters, for the NDPERS Public Safety Defined Benefit Retirement Plan.

This bill was developed with the input from both NDPERS and Legislative Council staff and was presented at the Employee Benefits Program Committee on Monday, June 17, 2024, and given favorable consideration. The House Government and Veterans Affairs Committee's hearing on HB 1112 was held Wednesday, January 9 and passed with a 14-0-0 vote. On January 14, it passed the House on a 93-0-1 vote and was heard in the Senate State and Local Government Committee on March 6, where it passed out of committee on a 6-0-0 vote.

Budgetary Impact - None.

FINANCIAL AUDIT FINDINGS

Financial Audit findings included in the most recent audit - The North Dakota State University Audit Report for the Biennium Ended June 30, 2023, as prepared by the North Dakota Office of the State Auditor, did not identify any areas of concern. The North Dakota Forest Service was included with the NDSU audit for this recent biennium instead of being a separate audit as was done for the biennium ending June 30, 2021.

The June 30, 2024, NDUS financial audit has been completed by the North Dakota Office of the State Auditor and there were no audit findings for NDSU.

FEDERAL STATE FISCAL RELIEF FUNDS

Federal state fiscal relief funds remaining to be spent by December 2026 – N/A.



Optional Request: Conservation Tree Improvement Initiative

The Conservation Tree Improvement Initiative provides critical resources to meet the increasing demand for conservation trees, alleviate seasonal workforce shortages, and address anticipated staff succession. The North Dakota Forest Service has operated the Towner State Nursery since 1951. The nursery is a nationally recognized leader in conservation nursery production and mechanization and has produced and sold over 80 million seedlings for conservation purposes.

Special Funds	\$350,000
Special Fund FTE	2.0

Trees produced and sold by the nursery are used for conservation tree plantings including: farmstead and field windbreaks, living snow fences, wildlife plantings, riparian buffer strips, and others. Conservation tree plantings are designed to achieve conservation, economic, and societal goals. Trees are sold to soil conservation districts, farmers, ranchers, landowners, and other conservation entities.



Based on recent sales trends and orders, customer feedback, regional seedling availability, and growing support for conservation practices, demand for conservation trees will continue to increase into the future. Weather extremes have drawn attention to the social and economic benefits of conservation practices. North Dakotans have witnessed soil erosion during dust storms associated with open winters and the impacts to commerce and safety when large stretches of unprotected highways are closed

during blizzards. Conservation tree plantings play an important role in mitigating these impacts.

Nationally, production capacity has eroded for many conservation nurseries due to workforce availability and the loss of institutional knowledge and skills associated with inadequate succession planning. Conservation nurseries struggle with retaining a reliable workforce to fulfill labor demanding activities, and many have transitioned to H-2A contract labor. Historically, Towner Nursery has been fortunate to maintain a relatively stable seasonal workforce, however this labor availability has been slowly declining. Strengthening full time staff capacity is critical for the nursery to navigate a declining seasonal workforce, maintain institutional knowledge and skill, and retain production capacity.

The addition of two nursery technicians will build critical capacity, strengthen program structure, and ensure continuity of operations. Tree production will be expanded by enhancing all aspects of nursery production including: enhancing irrigation capacity, executing field production practices, greenhouse activities, harvesting and packaging practices, transplanting seedlings, preparing seedbeds, managing cover crops, assisting with seed collection/processing, and maintaining and operating equipment.

Optional Request: Emerald Ash Borer Mitigation

Emerald Ash Borer Mitigation is a \$950,000 one-time funding need identified by the North Dakota Forest Service to help North Dakota communities mitigate the impacts of emerald ash borer (EAB). EAB, *Agrilus planipennis*

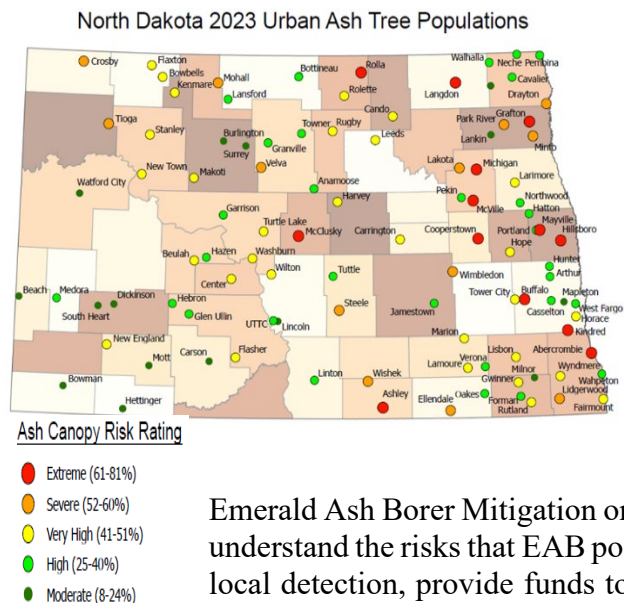
General Funds

\$950,000

Fairmaire, is a highly invasive, exotic insect that attacks and kills all species of North American ash trees. EAB was found North Dakota on August 22, 2024, in LaMoure County. The funding would allow the agency to provide assistance to North Dakota communities to prepare for the arrival of and respond to the detection of EAB.

North Dakota has an estimated 90 million ash trees. Ash is the most common tree planted in communities, reaching 70% of the tree population in some towns. Green ash represents a large percentage of the state's 55,000 miles of field and farmstead windbreaks and is a major component of the state's native forests.

In North Dakota's communities, ash trees can be found along boulevards, streets, and within parks. Removal of dead ash trees alone can range anywhere from several hundred to several thousand dollars per tree depending on size and proximity to utilities and buildings.



More than 120 communities across the state have developed EAB Mitigation plans, conducted tree inventories and are proactively removing declining ash and replanting to spread out the impact of the cost while increasing species diversity.

Now that it has been detected, significant financial resources will be required to delineate and manage EAB infestations in order to slow the spread and mitigate the impacts on forest resources and state and local budgets.

Emerald Ash Borer Mitigation one-time funding will be used to help communities understand the risks that EAB poses, assist in preparing and planning for the pest's local detection, provide funds to help offset mitigation costs. Specific forms of assistance include:

- Initiating detection and delimiting surveys
- Providing cost-share for ash removal and replacement with diverse tree species.
- Mitigating the impact of EAB through best practices - ash removals, disposal and approved treatments.
- Developing outreach and education materials and programs.

NDSU does not discriminate in its programs and activities on the basis of age, color, gender expression/identity, genetic information, marital status, national origin, participation in lawful off-campus activity, physical or mental disability, pregnancy, public assistance status, race, religion, sex, sexual orientation, spousal relationship to current employee, or veteran status, as applicable. Direct inquiries to: Vice Provost, Title IX/ADA Coordinator, Old Main 201, NDSU Main Campus, Fargo, ND, 58108, 701-231-7708, ndsuoaa@ndsuo.edu.

This publication is available in alternative formats by calling (701) 328-9944.
