

North Dakota House **APPROPRIATIONS COMMITTEE**

BISMARCK STATE COLLEGE | NORTH DAKOTA'S POLYTECHNIC INSTITUTION

Brent Sanford, BSC President
March 12, 2025

KEY TOPICS

ACCOMPLISHMENTS

ONE-TIME FUNDING UPDATE

NEXT BIENNIUM GOALS

GROWTH CHALLENGES



BISMARCK STATE COLLEGE



ACCOMPLISHMENTS



ND House Appropriations Committee

ACCOMPLISHMENTS >>> ENROLLMENT GROWTH

SINCE LAST BIENNIUM, BSC IS:

- >>> **Up 13%** in headcount
- >>> **UP 17%** in credit hours
- >>> **Up 20%** in full-time students

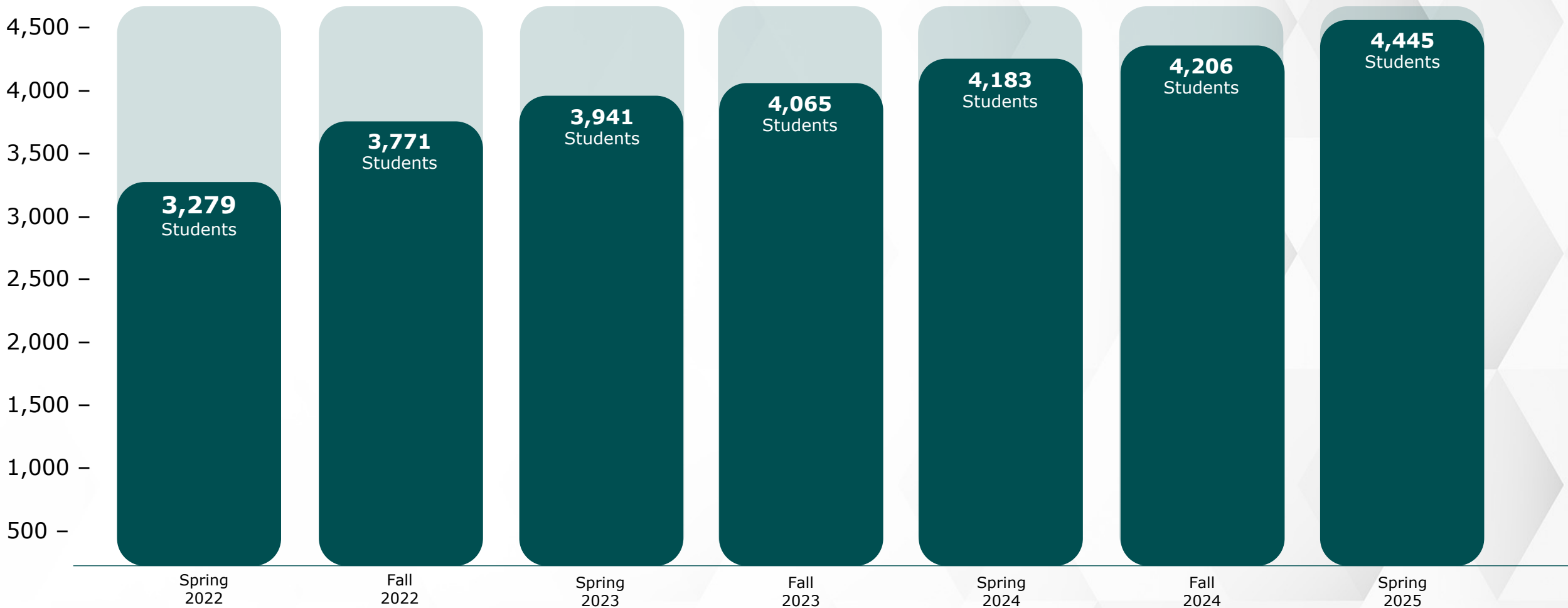
SPRING 2025 ENROLLMENT MILESTONES:

- >>> 6th consecutive semester of growth
- >>> Highest enrollment in BJC/BSC history – 4,445 students
- >>> Reached our 5-yr enrollment goal 2 years early



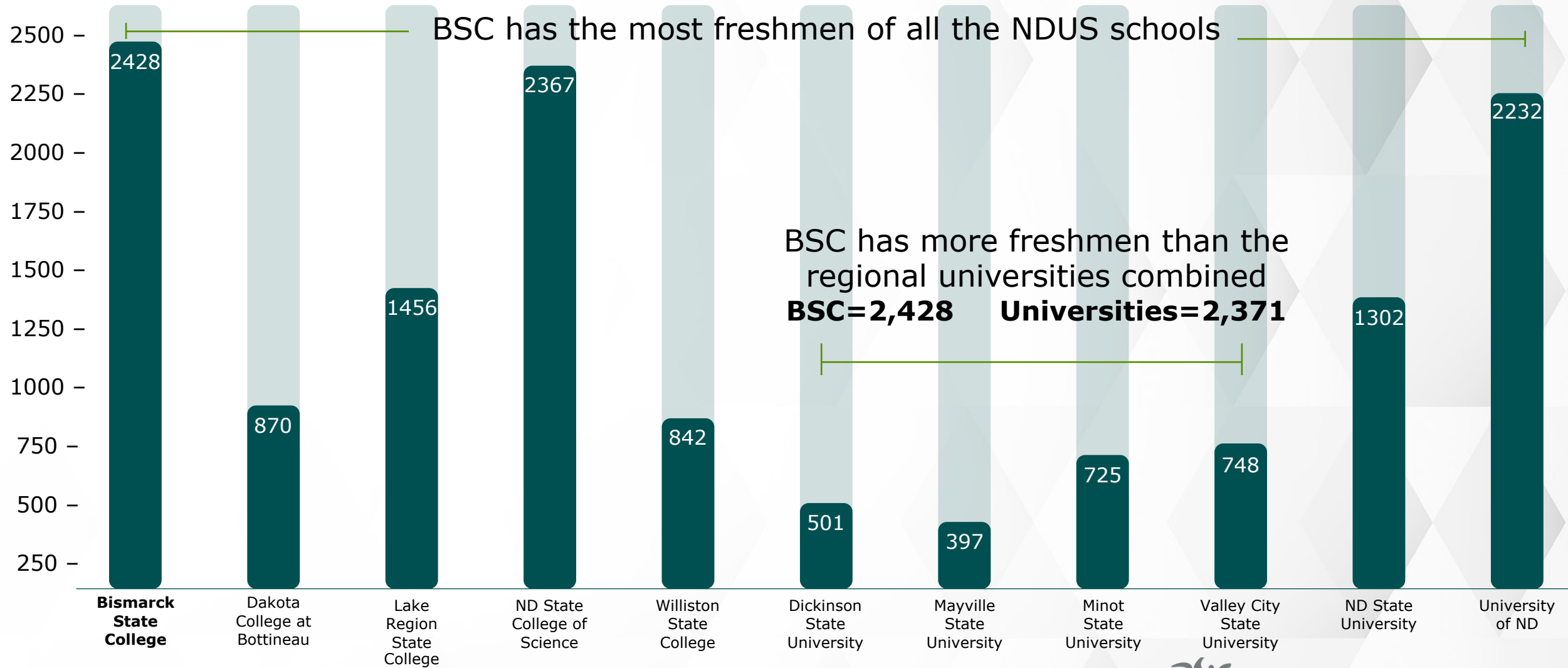
ACCOMPLISHMENTS >>> ENROLLMENT GROWTH

6 CONSECUTIVE SEMESTERS



TOTAL FRESHMEN

»» SPRING 2025 »»



ACCOMPLISHMENTS >>> ENROLLMENT GROWTH

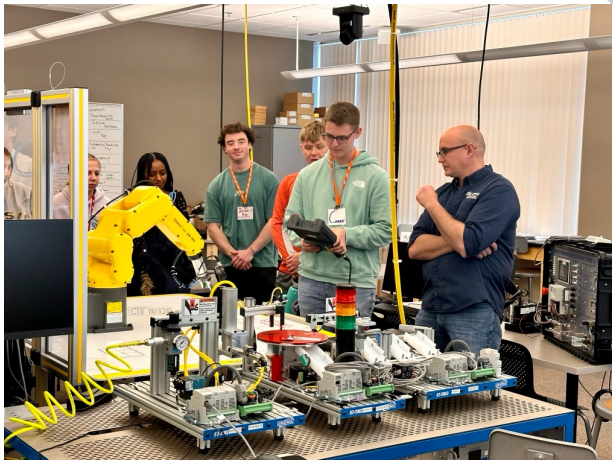
NORTH DAKOTA STUDENTS

>>> **83%** of all BSC students are ND residents

91% of BSC freshmen are ND residents

BSC SPRING 2025 HEADCOUNT

	Freshman	Sophomore	Junior	Senior	Total
ND Students	2,208	1,363	35	82	3,688
Total Students	2,428	1,773	59	185	4,445
% of ND Students	91%	77%	59%	44%	83%



ACCOMPLISHMENTS



PROGRAM GROWTH

since the ND 68th Legislative Assembly

HEAVY EQUIPMENT OPERATOR

Insurance

Industrial Robotics

Petroleum Production Operator II

SECURITY OPERATIONS

POWER PROCESS ADVANCED OPERATOR

Arts Entrepreneurship & Management

OPERATOR I

Mechatronics II

Business End User Security

IT and Cybersecurity Governance

BUSINESS FUNDAMENTALS

Geospatial Technology

Additive Manufacturing

DIALYSIS TECHNICIAN

Petroleum Production Advanced Operator

Artificial Intelligence
& Machine Learning
Specialist

HEALTH

ADMINISTRATION

{SPORTS AND EXERCISE SCIENCE

Pending HLC Approval

ELECTRICIAN TECHNICIAN

Secure Web Programming

Digital Forensics
& Incident Response

Automation

Power Process
Technology

Software Analysis

Applied Communication

COMPUTER
APPLICATIONS

**Land Surveying
Technology**

Foundations in
Emerging Technologies

Medical Assistant

MECHANIC I

Mechatronics I

Arts Business

APPLIED ARTS

Civil Engineering Technology

UNMANNED AERIAL SYSTEMS

Power Process Operator II

Dental Hygiene

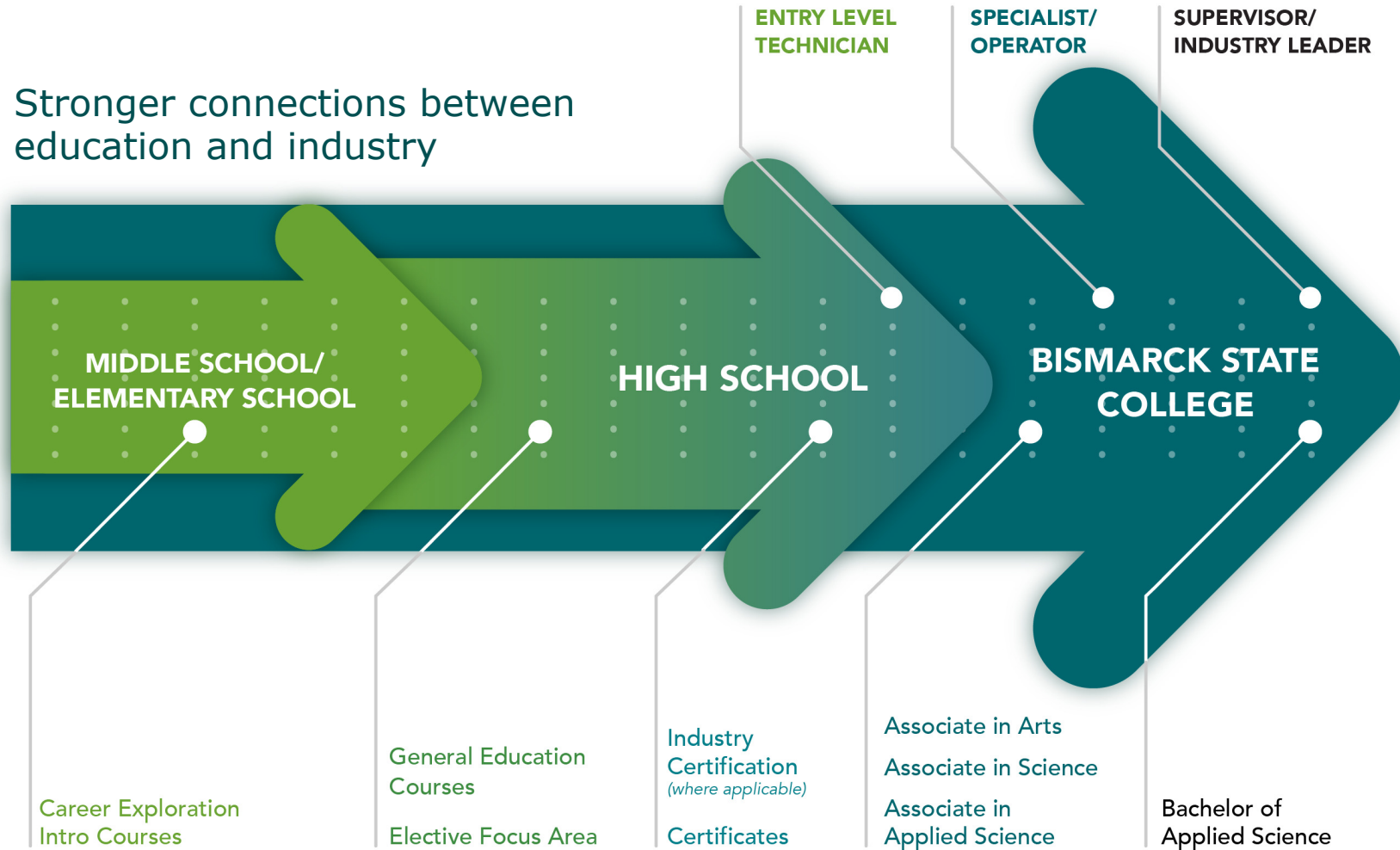
**UNIVERSITY
STUDIES**

INTELLIGENT MACHINE LEARNING}



DENTAL ASSISTING

Psychology



INTEGRATING CREDENTIALS:

- Faster workforce entry
- Lowers student debt
- Increases employability
- Bridges the skills gap
- Enhances career readiness

ACCOMPLISHMENTS >>> ALIGNMENT WITH INDUSTRY

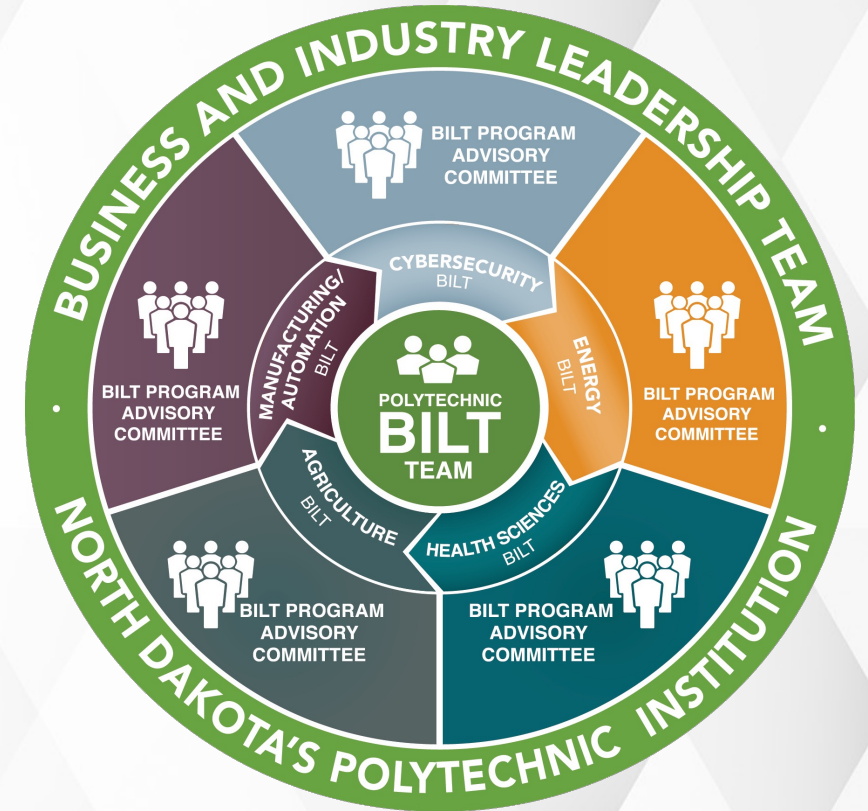
BUSINESS & INDUSTRY LEADERSHIP TEAMS

>>>>

Working closely with industry partners to ensure workers are equipped with the necessary skills to meet current and future job market needs

>>>>

Focusing on upskilling and reskilling to create a more resilient workforce resulting in long-term economic stability



ACCOMPLISHMENTS >>> NEW WORKFORCE INITIATIVES

GRAND ENERGY



Focuses on creating a talent pipeline to deliver a workforce with the innovative skills needed to drive the energy industry

BLUE HALO PARTNERSHIP



Leverages BlueHalo's advanced technologies and BSC's expertise in training systems mechanics and technicians to address complex national security and defense challenges

 GRAND ENERGY

BLUEHALO 

ACCOMPLISHMENTS >>> NEW WORKFORCE INITIATIVES

BSC DENTAL PROGRAM TRAINING FACILITY & CLINIC



BSC industry partner, **SDY Dental**, has built a new facility and BSC is renting their former facility and purchasing their equipment



BSC Mystic Smiles Clinic

- Provides BSC dental students hands-on experience
- Very little remodeling needed
- No state funding was needed to start this clinic
- Planning for clinic to be open in 2025
- Due to the 4-yr lag, BSC will not receive credit hour funding from the state until Fall 2030



ACCOMPLISHMENTS >>> SPECIAL PROJECTS

SECURED \$9.9M GRANT: "XR FOR VR" PROJECT



Addresses **Manufacturing** workforce shortages by using extended and virtual reality to introduce individuals with disabilities to potential career paths

PURCHASED 4 ANATOMAGE TABLES



State-of-the-art digital anatomy tables that provide high-tech hands-on learning for **Exercise science** and **Health Science** students

RESOLVED FACILITY TITLE IX COMPLIANCE ISSUES



Students voted to use student fees to support building the BSC Bavendick Center—a multipurpose student/athletic facility—to address inequalities in the Armory and repurpose that building



ACCOMPLISHMENTS >>> SPECIAL PROJECTS

SECURED \$75K GRANT TO FUND TRADES SCHOLARSHIPS



Responding to a workforce need by providing 35 students with **Mechanical Maintenance** and **Welding** scholarships to increase the number of graduates for those industries

CREATED BSC SECURITY OPERATIONS CENTER



Located in the Advanced Technology Center, the SOC was developed for hands-on learning in **Cybersecurity** through a technical skills grant and a ND Commerce partnership

SOUGHT PRISON EDUCATION PROVIDER APPROVAL



Designation was approved by the Department of Ed and inmates will now have the opportunity to apply for Pell Funding



ACCOMPLISHMENTS >>> SPECIAL PROJECTS

ADDRESSING ENERGY & MANUFACTURING WORKFORCE SHORTAGES



BSC provides workforce solutions by offering a 2-week introduction to **Oil & Gas** career pathways at the Bakken Area Skills Center in Watford City



Starting Fall 25 BSC will offer dual credit for **Automation & Robotics, Energy Services & Renewable Generation, Mechanical Maintenance, Process Technology** and **Petroleum Production** pathways in western and central ND K-12 CTE centers and affiliated schools

SECURED \$2M "EnerGETic" GRANT



Supports the development of career pathways and student enrollment in **Engineering Technology, GIS** and **UAS** programs



ACCOMPLISHMENTS >>> **FISCAL RESPONSIBILITY**

COMPOSITE FINANCIAL INDEX (CFI)

- >>> The CFI is measured on a scale of -4 to 10 and measures four separate aspects of a college's financial health. It includes debt ratios, reserves to expenditures, and the size of endowments
- >>> Enrollment growth and reducing expenses have helped BSC improve the CFI from 0.6 in 2016 to **9.22** in 2024
 - Reduced 13 FTEs in state appropriations/tuition
- >>> BSC had zero audit findings

BISMARCK STATE COLLEGE



ONE-TIME FUNDING UPDATE



ND House Appropriations Committee

ONE-TIME FUNDING & RELIEF FUNDS UPDATE >>> **ADVANCED TECHNOLOGY CENTER**



Jan 13, 2025 – Substantial Completion Date
March 31, 2025 – Legislative Showcase/Social
April 2025 – Ribbon Cutting Event

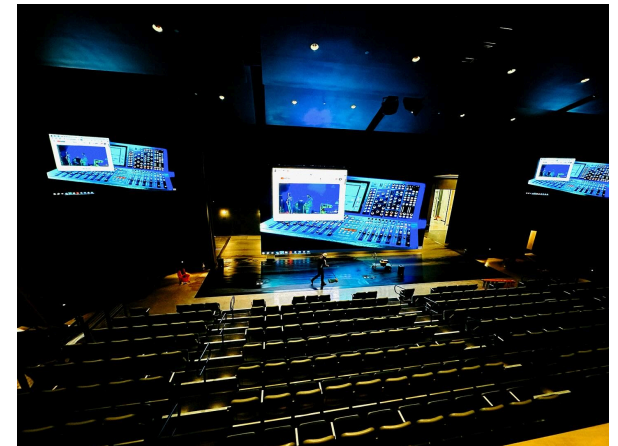


Project completed on budget
\$9.96M from State General Fund
\$38M from Fed/State Fiscal Relief Fund
• \$35M for the building + \$3M for program start-up



\$498K of the start-up funding remains
• Will be used in the next year for new **Heavy Equipment Operator, Electrician Technician** and **Mechatronics** programs, and additional seats in **Nursing**

Lack of program start-up funding will limit the addition of new programs



ONE-TIME FUNDING & RELIEF FUNDS UPDATE >>> **ADVANCED TECHNOLOGY CENTER**

- >>> Building was designed for current and future workforce needs
- >>> Designated areas for the development of new technologies to create an accelerator for new entrepreneurship
- >>> **Special features:** Two flex labs, a live event venue, immersive VR lab, security operations center, digital hive, collaboration rooms, offices for polytechnic outreach



BISMARCK STATE COLLEGE



NEXT BIENNIUM GOALS



ND House Appropriations Committee

NEXT BIENNIUM GOALS >>> ND'S POLYTECHNIC INSTITUTION

EXPAND NORTH DAKOTA'S WORKFORCE

- >>> Prepare skilled graduates to meet industry demand
- >>> Develop career-ready professionals with hands-on training in high-demand fields such as energy, healthcare, ag, technology and manufacturing
- >>> Partner with business and industry leaders to identify workforce gaps and align programs with workforce needs
- >>> Provide opportunities for adult learners and non-traditional students to reskill or upskill for emerging careers

NEXT BIENNIUM GOALS >>> ND'S POLYTECHNIC INSTITUTION

ADVANCE ECONOMIC DEVELOPMENT THROUGH PUBLIC-PRIVATE PARTNERSHIPS

- >>> Drive economic growth in ND by collaborating with business, industry and gov't
- >>> Continue to develop customized training programs and stackable certifications to meet the needs of industry partners
- >>> Host industry-specific conferences, workshops and networking events to strengthen public-private relationships
- >>> Leverage industry to acquire equipment, educational spaces and current employees as instructors

NEXT BIENNIUM GOALS >>> ND'S POLYTECHNIC INSTITUTION

GROW ENROLLMENT, DEVELOP STUDENT PIPELINES AND EXPAND PROGRAMMING

- >>> Build a diverse and robust student pipeline through targeted recruitment in ND and continue to broaden the pipeline that brings students to BSC
- >>> Expand programs to include advanced technology, sustainable innovation and other high-demand growth sectors
- >>> Implement innovative education models to attract a broader audience such as 90-credit BAS degrees and competency-based education
- >>> BSC supports increasing the Challenge Grant to \$50M to make education more affordable by incentivizing donors and creating public/private partnerships to support scholarships – \$18.8M awarded to BSC students from 2013-25

NEXT BIENNIUM GOALS >>> ND'S POLYTECHNIC INSTITUTION

STRENGTHEN RELATIONSHIPS WITH CTE & K-12 PROGRAMMING

- >>> Partner with CTE Centers and K-12 schools to introduce students to high-demand workforce careers earlier
- >>> Continue offering dual-credit courses, technical workshops and summer camps to high school students interested in STEM careers and trades
- >>> Train educators and advisors in K-12 to promote advanced technology with career opportunities in the high-demand workforce fields as a viable career option
- >>> Host on-campus events to inspire young learners, including open houses, industry demonstrations and skills competitions

BISMARCK STATE COLLEGE



GROWTH CHALLENGES



ND House Appropriations Committee

2025-2027 >>> GROWTH CHALLENGES

CURRENT FUNDING FORMULA

3RD LARGEST INSTITUTION

2ND LOWEST IN STATE
FUNDING PER STUDENT PER
SEMESTER

INSTITUTION	2023-25 Final Base Funding	Equity General Fund	Employer Retirement Increase General Fund	TOTAL	FTE Student Count (2022 Fall Enrollment Report)	State Support per Student per Semester (Assumes Fall & Spring Semesters for 2 years) (SB2164) (2019)
BSC	36,354,055	996,414	31,441	37,381,910	2,466	3,790
DCB	11,130,278	304,074	8,526	11,442,878	550	5,201
LRSC	15,073,051	411,788	14,693	15,499,532	797	4,862
NDSCS	38,761,924	1,049,248	43,662	39,854,834	2,064	4,827
WSC	13,118,332	358,386	8,607	13,485,325	646	5,219
DSU	23,801,610	623,324	15,061	24,439,995	1,155	5,290
MASU	21,698,810	568,255	11,331	22,278,396	784	7,104
MISU	47,677,097	1,256,166	31,980	48,965,243	2,167	5,649
VCSU **	27,612,092	723,115	14,606	28,349,813	1,073	6,605
NDSU	154,844,139	4,250,375	97,772	159,192,286	10,701	3,719
UND	176,704,163	4,850,392	100,821	181,655,376	9,418	4,822
UND SMHS	70,189,742	1,926,476	38,691	72,154,909	1,342	15,431
UND SMHS-I	10,676,150			10,676,150		
TOTALS	647,641,445	17,318,013				

BSC: \$3,790

Other community colleges & regional universities: \$4,827 to \$7,104

BSC has primarily lower division credits resulting in the lower weights, and as a large producer of credit hours, receives a very minimal credit completion factor

2025-2027 >>> GROWTH CHALLENGES

FUNDING FOR ENERGY

- >>> The Energy sector is one of the largest economic generators for ND
- >>> Funding is needed for Energy programs to address workforce shortage of skilled workers
- >>> **All** Energy programs should be weighted as career/technical for funding
 - SB2003 changes wind energy programs to be weighted as career/technical
 - All other Energy programs are currently weighted as engineering

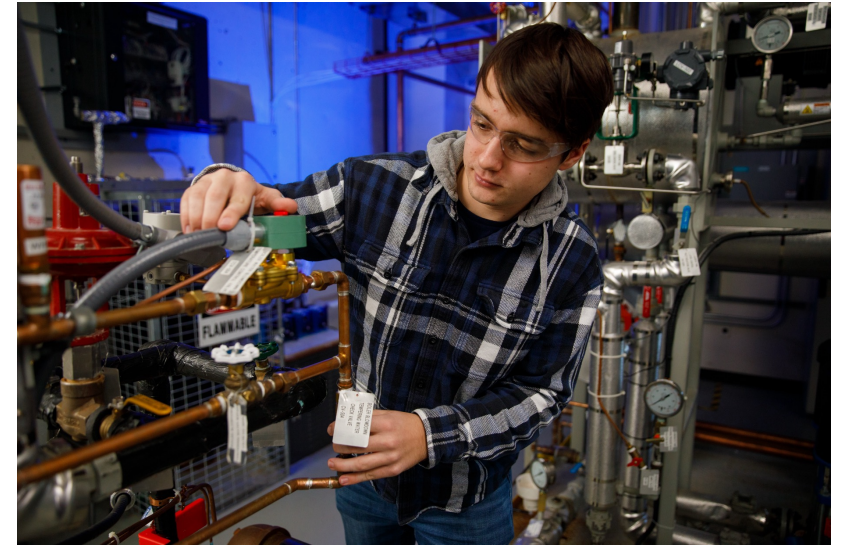


2025-2027 >>> GROWTH CHALLENGES

WORKFORCE EDUCATION INNOVATION FUNDS

>>> Start-up funding is needed for new workforce programs and equipment in high-demand, high-priority occupations due to the 4-yr lag in reimbursement

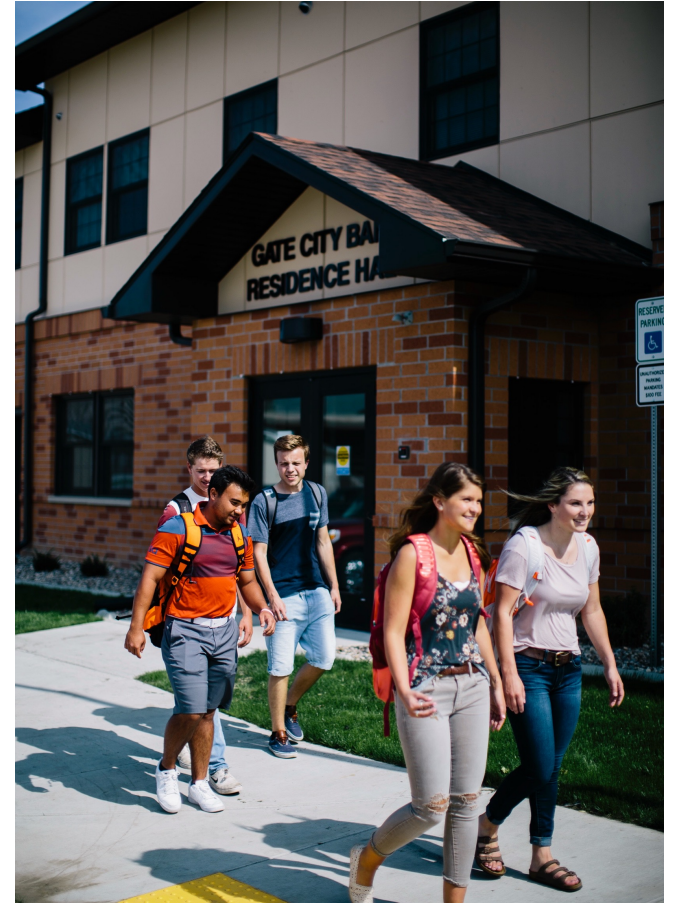
- High-tech equipment
- Program/curriculum development
- Instructional staff
- Recruitment and retention
- Student support services



2025-2027 >>> GROWTH CHALLENGES

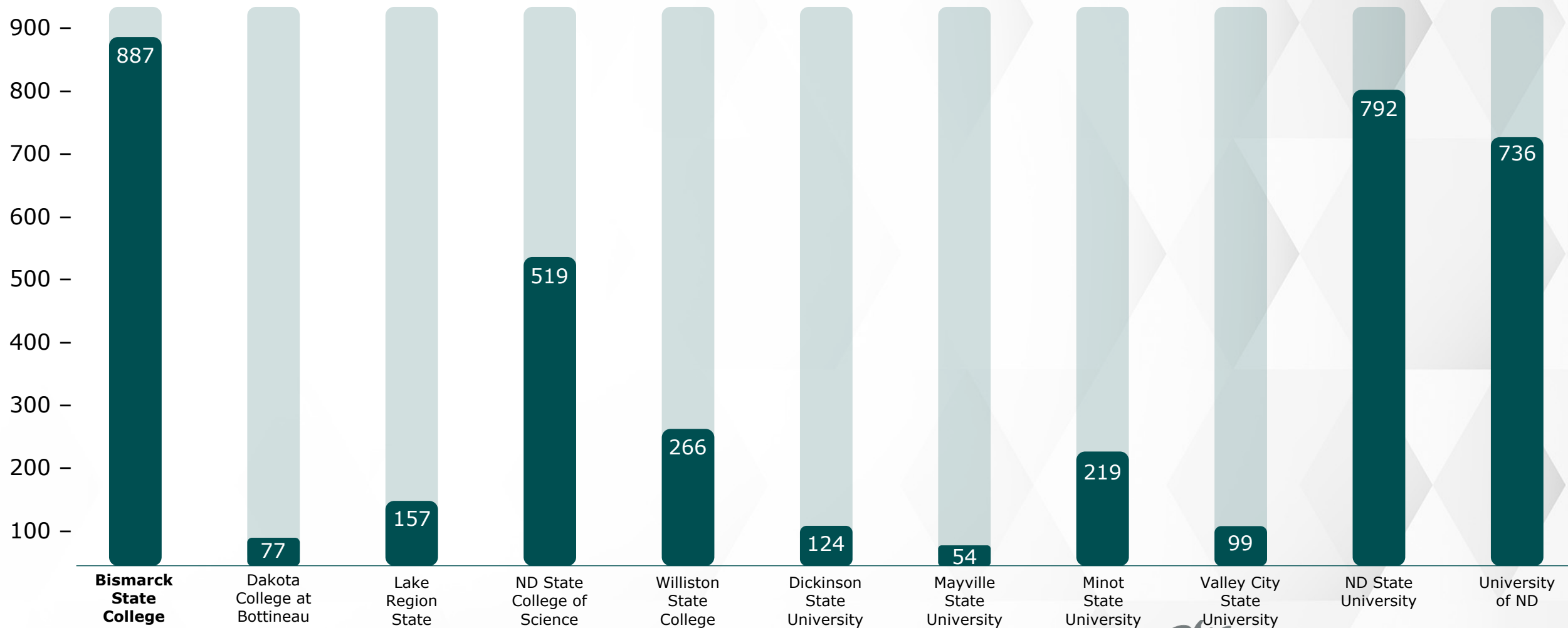
CRITICAL STUDENT HOUSING SHORTAGE

- >>> BSC needs to expand housing to support growing enrollment, student opportunities and workforce needs
- >>> Costs students \$3,084/yr more to live off campus
 - \$5,133 on campus vs. \$8,217 off campus (*Per HUD*)
- >>> Fall 2024: 524 housing applications and 54 students on a waitlist after increasing capacity from 448 beds to 470 (*within fire code*)
- >>> BSC has the largest number of traditional-age freshmen from ND – 887 students in Fall 2024



GROWTH CHALLENGES >>>

FALL 24 ND TRADITIONAL FRESHMEN



2025-2027 >>> GROWTH CHALLENGES

\$1.4M BUILDING REMODEL



Transforms 21,344 sq. ft. of previously-leased office space into a resident hall



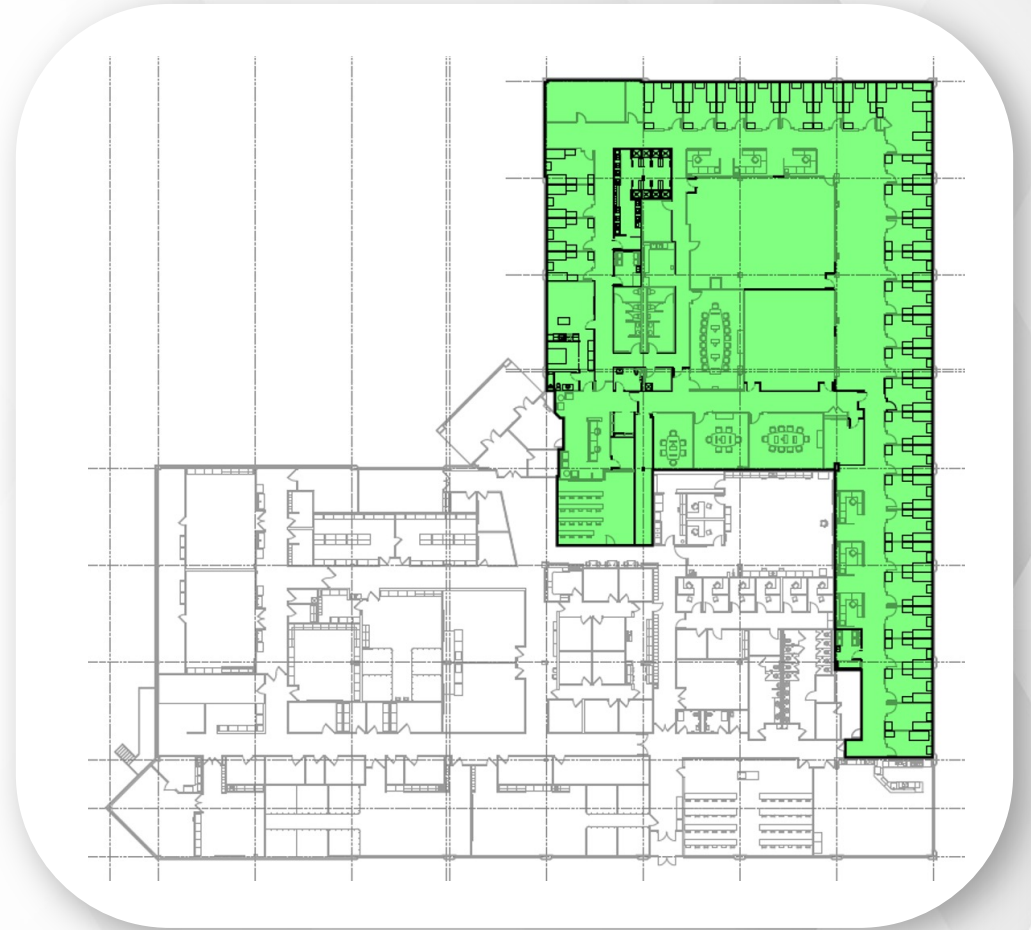
Only requires minor changes to convert 34 offices to residence hall rooms to accommodate 62 students



Only minimal construction is needed to bring the existing wing to code for a resident hall



Authorization is needed to utilize \$1.4M in existing state-Tier II and III funding



2025-2027 >>> GROWTH CHALLENGES

HEALTHCARE EDUCATION SPACE AT CAPACITY

- >>> Substantial growth in healthcare program applications. In Fall 2024:
- **LPN (Nursing)** – 129 applications
 - **Diagnostic Medical Sonography** – 40 applications
 - **Paramedic Technologies** and **Medical Lab Technician** programs – 3 yrs at full capacity
- >>> An expansion plan has been developed in collaboration with the private sector to respond to the growing demand for healthcare workers
- Approx 50 medical/dental providers requesting and/or supporting an expansion of programs



2025-2027 >>> GROWTH CHALLENGES

HEALTHCARE EDUCATION SPACE AT CAPACITY

- >>> BSC has maximized its current footprint, using storage spaces as makeshift classrooms and labs for **Emergency Medical Services**
- >>> New programs – **Medical Assistant** and **Dialysis Technician** – have been relocated across campus due to space restraints
- >>> Expanding the current facility would allow all BSC health science programs to be in the same building for seamless integration between disciplines



2025-2027 >>> GROWTH CHALLENGES

\$43M EXPANSION OF HEALTH SCIENCES BUILDING

- >>> \$43M is needed for a 62,000 sq. ft. expansion of the BSC Health Sciences Building to accommodate new healthcare programs, students and equipment
- >>> Expands academic spaces to cater to disciplines such as respiratory therapy, nursing, radiology, dialysis, exercise and sports studies, biomedical, anatomy, and an educational walk-in clinic
- >>> Eliminates deferred maintenance costs as they will be included in the expansion – roof replacement, parking lot resurfacing, etc.



THANK YOU

BISMARCK STATE COLLEGE | NORTH DAKOTA'S POLYTECHNIC INSTITUTION