

THANK YOU!



HISTORY



ARPA FUNDING





IMPACT

- **100+ GROUPS HOSTED** AT GRAND FARM INNOVATION SHOP
- **79 JOBS CREATED** IN NORTH DAKOTA BY ORGANIZATIONS TIED TO GRAND FARM
- **20 COMPANIES** ESTABLISHED OR RELOCATED TO NORTH DAKOTA TIED TO GRAND FARM
- **PTI ND (AGCO)** BECAME AN ANCHOR TENANT AT THE GRAND FARM INNOVATION CAMPUS
- **500+** YOUTH ENGAGED AT THE GRAND FARM INNOVATION CAMPUS + THROUGH GRAND FARM
- **2,300 ORGANIZATIONS** ENGAGED WITH GRAND FARM
- **\$235M** IN FEDERAL GRANTS AWARDED IN CONJUNCTION WITH GRAND FARM

→ **COMPANIES** INTERESTED IN
DEDICATED PRESENCE ON CAMPUS

→ **FEDERAL LABORATORY** FOCUSED ON
ARTIFICIAL INTELLIGENCE + AGTECH
IN AGRICULTURE

→ **ESTABLISH NORTH DAKOTA** AS
GLOBAL HUB FOR AUTONOMOUS
AGRICULTURE INNOVATION

→ **DRIVE ECONOMIC GROWTH + JOB
CREATION** ACROSS TECHNOLOGY,
RESEARCH, + MANUFACTURING

→ **INCREASED GROWER SOLUTIONS** AS
GROWER FACING ENVIRONMENT FOR
AG INDUSTRY LEADERS

→ **ENGAGING YOUTH** + FOSTERING NEXT
GENERATION OF AGTECH LEADERS

POTENTIAL IMPACT



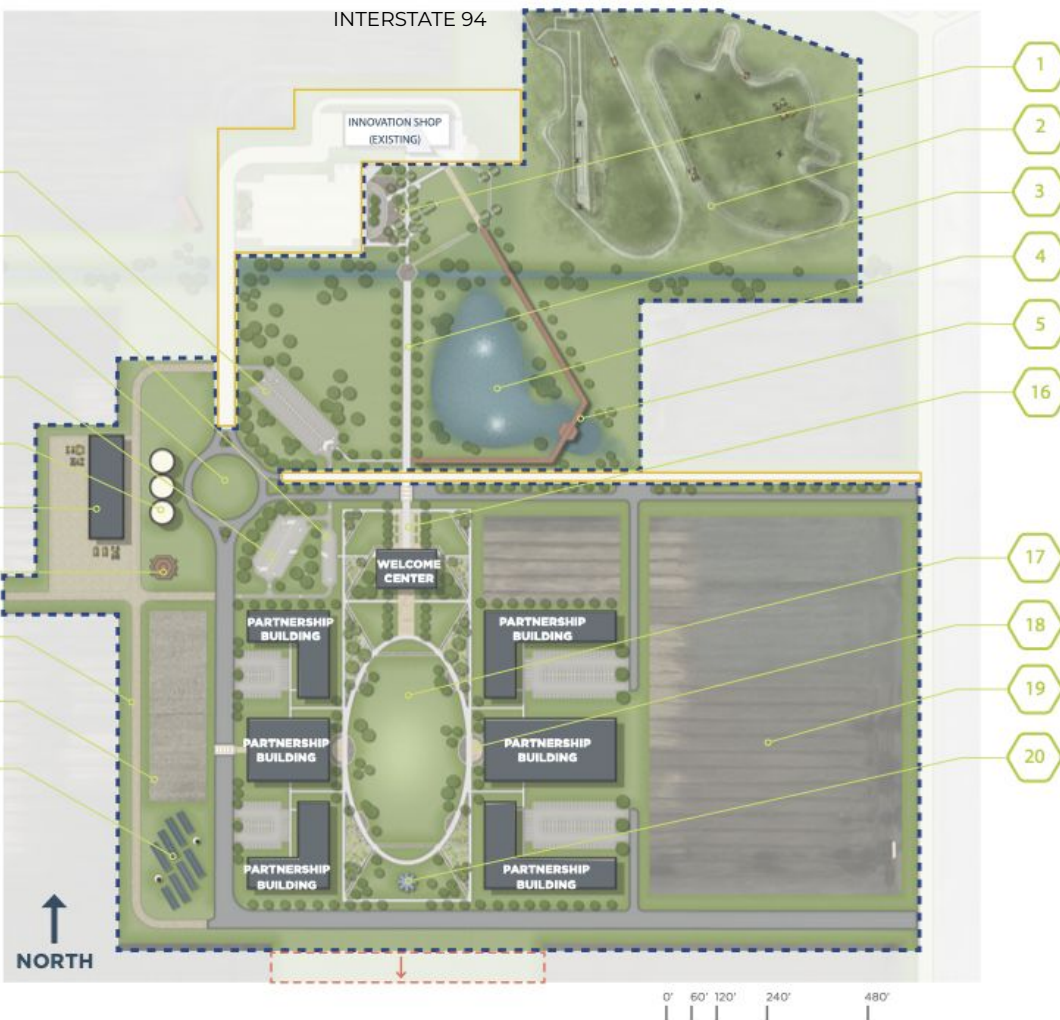
POTENTIAL IMPACT

Proposed Phase 2

- 1 Drop off and plaza
- 2 Equipment demonstration area
- 3 Pedestrian corridor
- 4 Stormwater retention pond
- 5 Elevated viewing boardwalk
- 6 Visitor parking lot 1
- 7 Welcome Center drop-off
- 8 Roundabout
- 9 Visitor parking lot 2
- 10 Grain bin storage and branding opportunity
- 11 Equipment storage shed and parking
- 12 Observation tower
- 13 Equipment gravel roadway
- 14 Partnership buildings showcase area
- 15 Energy installation
- 16 Welcome Center Plaza
- 17 Public Mall, open lawn
- 18 Education nodes
- 19 Partnership buildings showcase area
- 20 Focal sculpture

Legend

- Phase 1 Development (Existing)
- Phase 2 Development (Proposed)
- Phase



INVEST

