



HB 1012 Senate Appropriations Committee – HR Division

Chair, Senator Dick Dever

Holly Triska-Dally | Office of Refugee Services

March 10, 2025



Health & Human Services

North Dakota's History of Welcoming

- ND Population 1890: 190,983
- ND Population 1920: 646,872

By 1915, 79% of all North Dakotans were immigrants or the children of immigrants.



Today 38,355 immigrants live in North Dakota
Comprising **5% of the population** but **6.2% of the labor force**
Since 2020, immigrants made up **50% of ND employment growth**

Our Mission

To create community collaborations that strengthen and guide newcomers as they become welcomed neighbors and valued contributors to the economy.

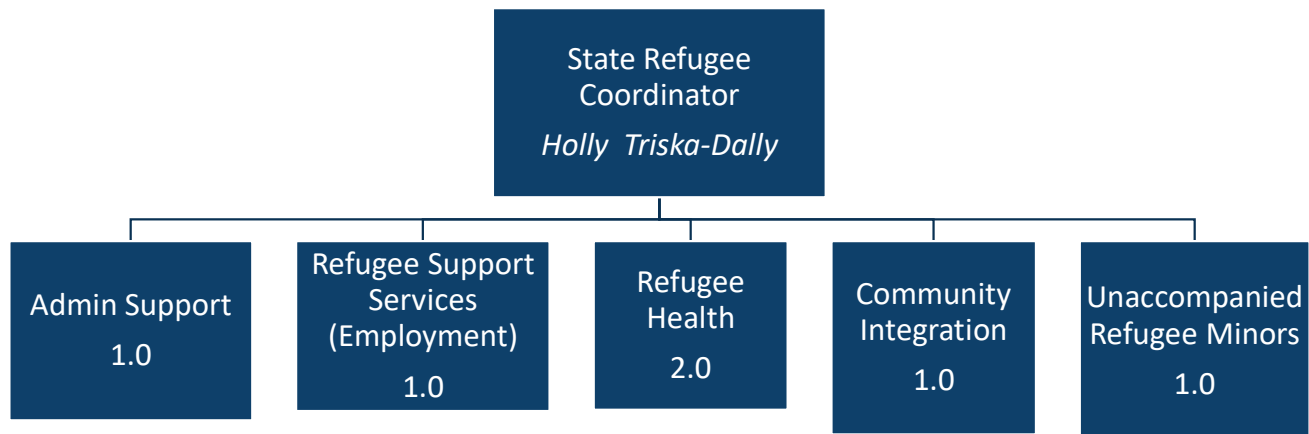
| Chapter | Chapter Name |
|------------|--|
| 50-06-01.4 | Structure of the Department a. Administration of programs for children and families, including refugee services |



Refugee Services

Office of Deputy Commissioner/Refugee Services

| 23-25 FTE | 25-27 FTE Requested | # of Temporary | # of Vacancies |
|-----------|---------------------|----------------|----------------|
| 7 | 7 | 1 | 0 |



The Legal Process for Refugee Resettlement



Overseas Vetting

8 Government Agencies
6 Background checks
3 in-person interviews

U.S. Placement

10 Resettlement Agencies
Initial 90 days in the U.S.
Cultural Orientation

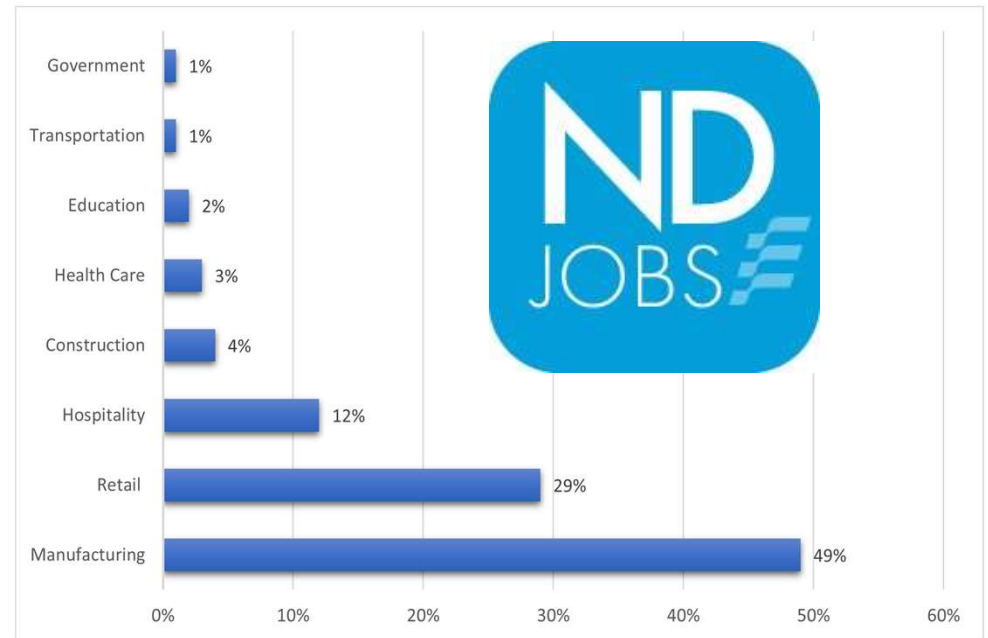
Long-term Success

Employment Assistance
English Language Learning
Community Integration

Connecting to Employment



New American Employment Program
North Dakota Job Service Centers



- 636 Employable Adults
- Average time to employment: 90 days
- Average wage: \$18.53

Removing Barriers to Employment



English Learning

Adult Learning Centers

- Remote Classes
- Mom and Me Classes
- Workforce-based English



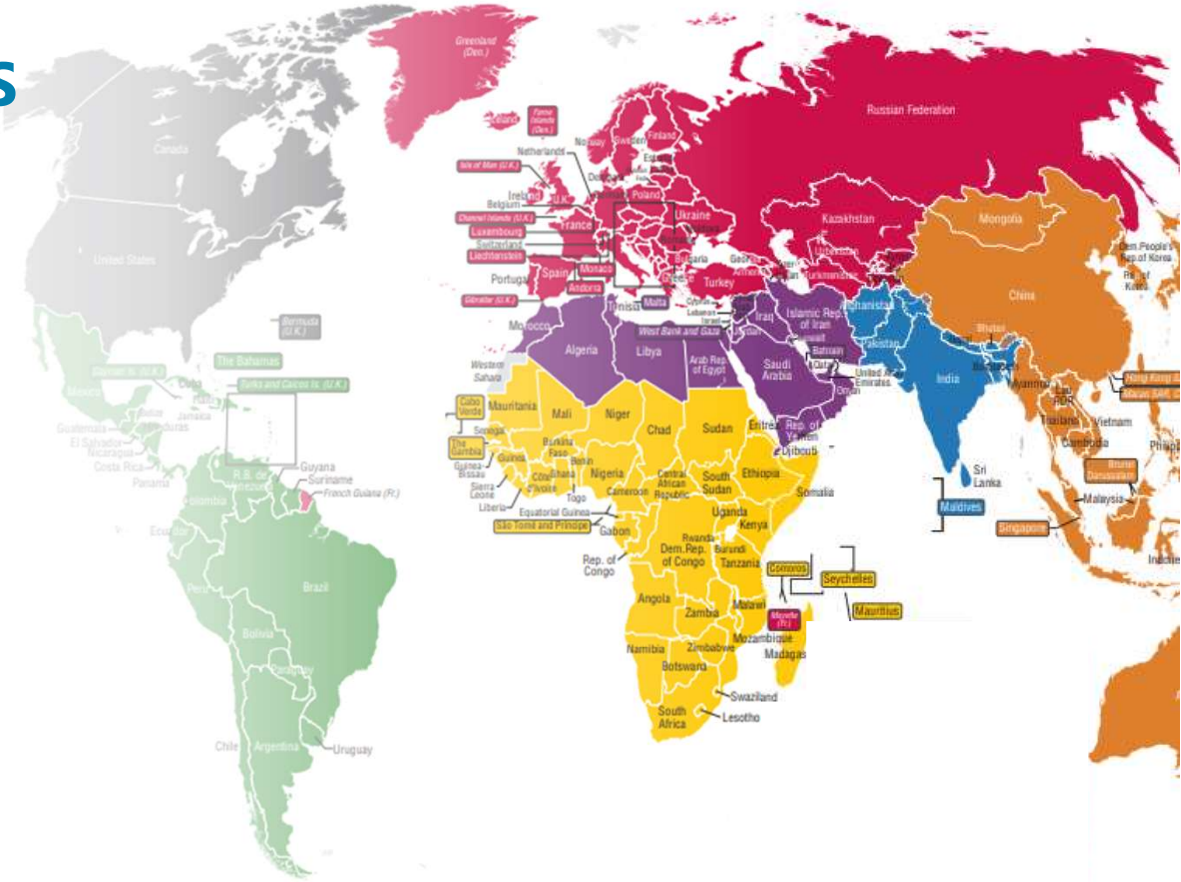
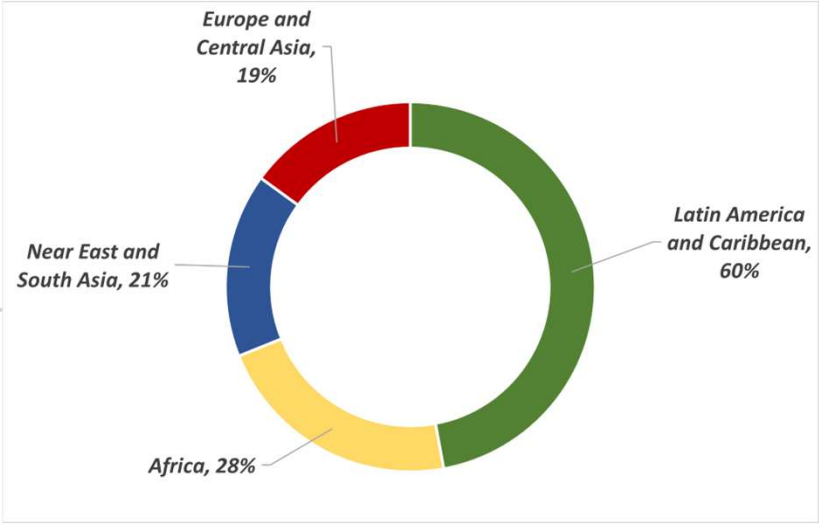
Community Integration

City Governments

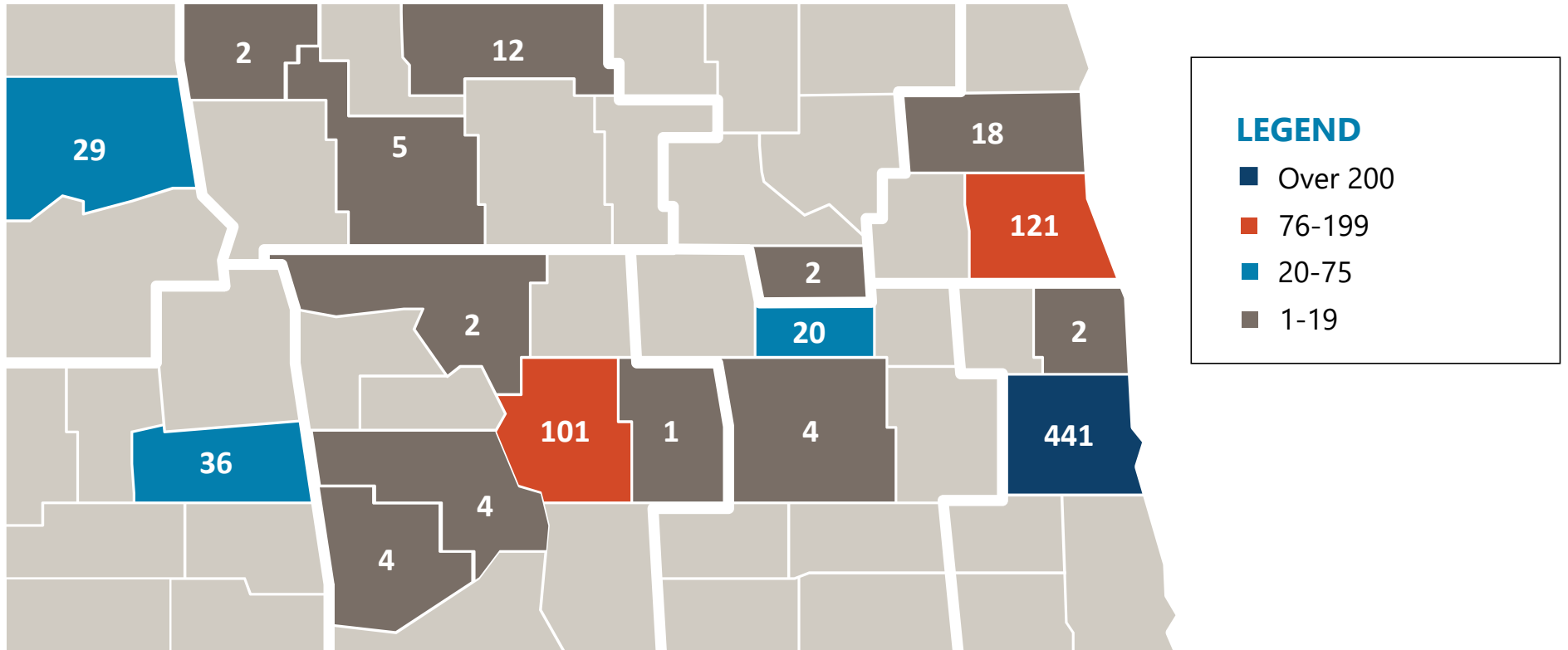
- Community Awareness
- Partnership Building
- Citywide Solutions



NORTH DAKOTA ARRIVALS BY WORLD REGION



2024 North Dakota Arrivals by County



804 Statewide Arrivals

45% outside of Cass County

Refugee Services: 2023-2025 Successes

- Improved assessments and outcome measurement

Launch of the Data Management System

- Improved access to English Language Learning

Launch of Virtual ELL Program

- Expanded community-based and employment sector relationships

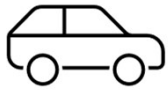
Partnered with over 30 organizations in 10 communities, investing \$3.5M in 2024

- Enhanced focus on behavioral health services

Partnered with the Behavioral Health Division to establish 8 wellbeing groups to improve health outcomes.



2025-2027 Biennium Goals



Transportation Solutions

- Public Transport
- Driver's Training
- Car Ownership



Digital Literacy

- Communication
- Job Search
- Virtual Learning



English Language

- Post employment
- Terminology classes
- CTE Readiness

Changes to Base Budget

By Ongoing, One-Time and Funding Source

| BASE BUDGET CHANGES | DESCRIPTION | 2025-27 EXECUTIVE BUDGET | | ENGROSSED HB 1012 | |
|------------------------|-------------|--------------------------|-------|-------------------|-------|
| | | GENERAL | OTHER | GENERAL | OTHER |
| NA | | | | | |
| | | | | | |
| | | | | | |
| | | | | | |
| | | | | | |
| | | | | | |
| | | | | | |
| | | | | | |
| | | | | | |

Comparison of budgets and funding

By Major Expense

| DESCRIPTION | 2023-25 LEGISLATIVE BASE | INCREASE / (DECREASE) | 2025-27 EXECUTIVE BUDGET RECOMMENDATION | INCREASE / (DECREASE) | ENGROSSED HB 1012 |
|---------------------|-----------------------------|--------------------------|---|--------------------------|----------------------|
| Salaries & Benefits | \$ 853,662 | \$ 859,175 | \$ 1,712,837 | \$ - | \$ 1,712,837 |
| Operating | 565,731 | 1,977,410 | 2,543,141 | - | 2,543,141 |
| IT Services | 6,300 | 37,170 | 43,470 | - | 43,470 |
| Grants | 11,208,976 | 7,468,820 | 18,677,796 | - | 18,677,796 |
| Total | \$ 12,634,669 | \$ 10,342,575 | \$ 22,977,244 | \$ - | \$ 22,977,244 |
| | | | | | |
| General Fund | \$ - | \$ - | \$ - | \$ - | \$ - |
| Federal Funds | 12,634,669 | 10,342,575 | 22,977,244 | - | 22,977,244 |
| Other Funds | - | - | - | - | - |
| Total Funds | \$ 12,634,669 | \$ 10,342,575 | \$ 22,977,244 | \$ - | \$ 22,977,244 |

Refugee Services Budget as % of HHS Budget

- 0.4%

Budget by Funding Source

- 0% General
- 100% Federal
- 0% Other

Budget by Pass Through

- 6.2% Paid to private providers
- 81.3% Direct Service
- 12.3% Admin
- 0.2% IT

The Economic Impact of Welcoming



2005 – 2019

Refugee tax contributions after the cost of initial government services

\$124 Billion



2022

Refugee spending power

\$82 Billion



2022

Business income from 190,000 U.S. Refugee entrepreneurs

\$6.7 Billion



Refugees: **78.2%**

U.S. Born **61.9%**



Economic Draw to North Dakota

Refugee Secondary Migration:

FFY 22

In migration: 71
Out migration: 8

FFY 23

In migration: 581
Out migration: 2

Contact Information

Holly Triska-Dally
State Refugee Coordinator
htriskadally@nd.gov

