

Good morning Chairman Kasper and members of House GVA,

- My name is Jillian Schaible, and I am a Legislative employee
- I am here to testify in support of SB2146
- I love the legislative process and being here to watch it in action, but the Capitol itself, while architecturally beautiful, is not easy to access
- The pictures you will find in my testimony today are just some of the barriers North Dakotans with different abilities will currently encounter if they feel comfortable coming in here
- I, or anyone with a different ability, should feel they can work here as a state employee, legislator or government official and to be proud to be North Dakotan
- Your support of SB2146 would tell everyone with different abilities that you feel the same way

Capitol Accessibility Photos

Jillian Schaible

Brynhild Haugland upper entrance



- No signage indicating room location or accessibility
- I accidentally found this door, but prior to, avoided the room when possible, as I did not want to sit on the “bottom” and/or use the elevator
- Brynhild Haugland is included in SB2146, HB1015 and HB1249

Brynhild Haugland bathroom entrance



- Stair door to ground floor men's bathroom
- There is a room behind the door, but this door blocks it

Brynhild Haugland



- Inside ground floor men's bathroom

Brynhild Haugland



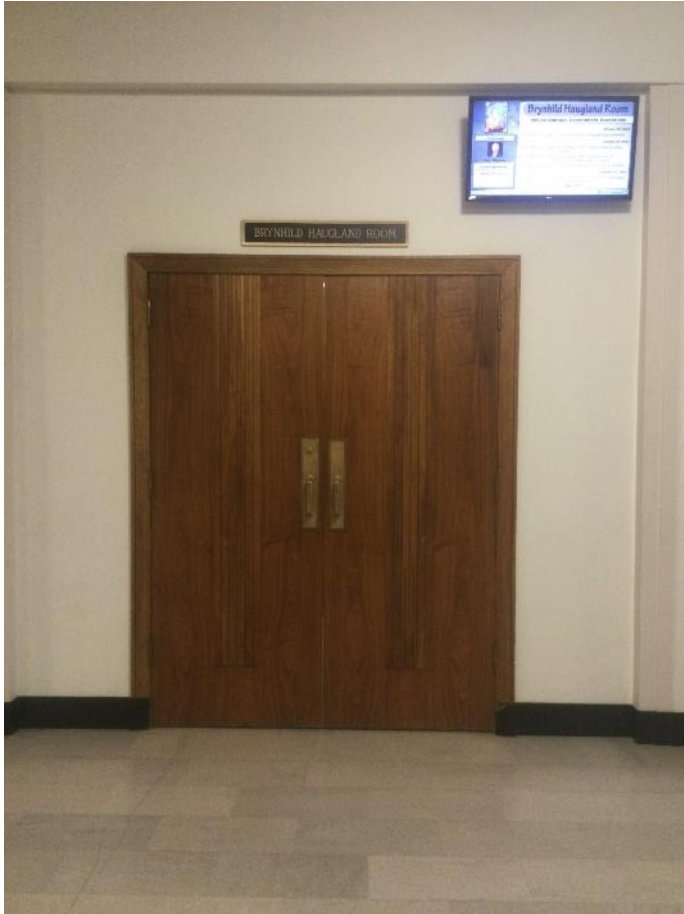
- Both TVs outside both entrances are too high
- Wheelchair elevator is located here

Brynhild Haugland Elevator



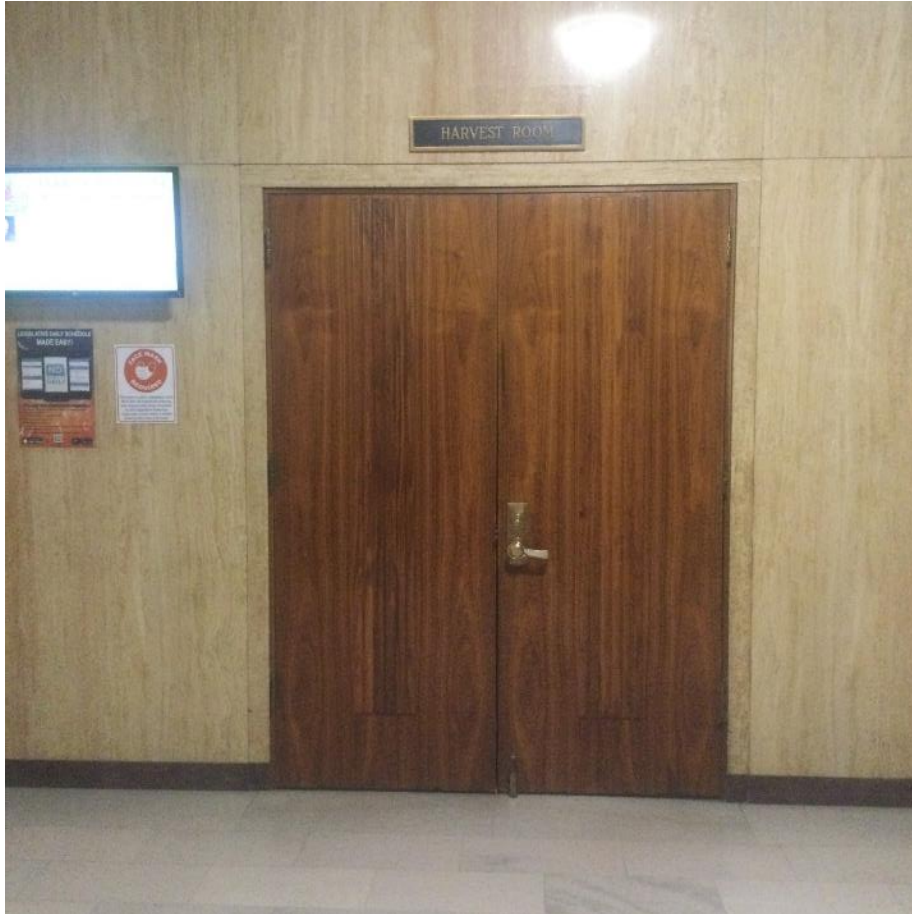
- Installed when?
- Who maintains it?
- How often is it checked?

Brynhild Haugland second entrance



- TV height is too high

Harvest Room Entrance



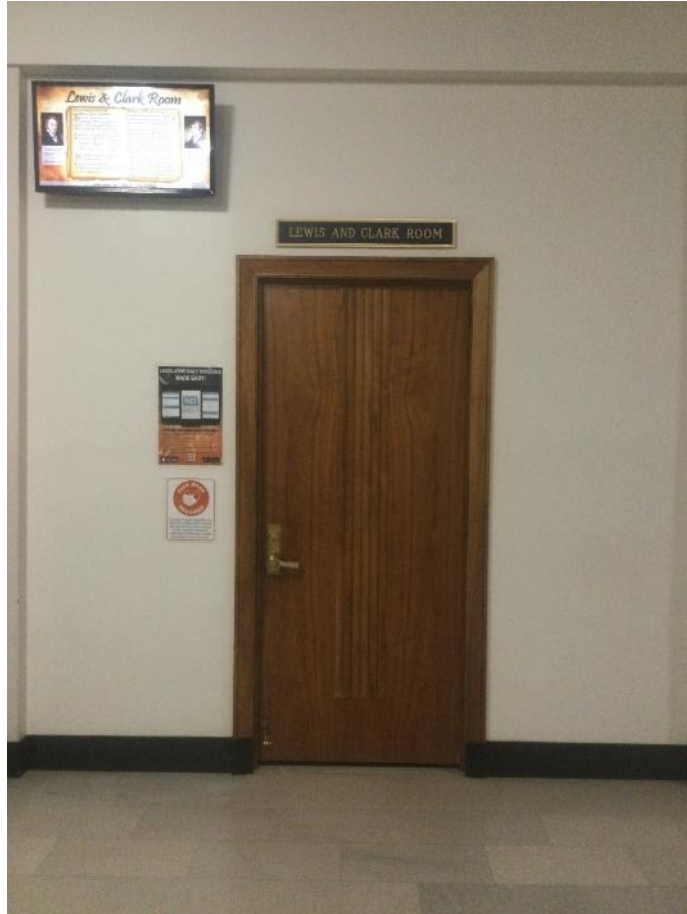
- TV height is too high

Horseshoe Rooms



- Can the doors remain unchanged?
- What about having a doorbell outside with an indicator light? When it goes off someone could open both doors
- Can we stream committee hearings on these TVs?
- All TVs appear to be the same height; no changes made to doors

Lewis and Clark



- TV height is too high
- Very narrow door

Ground Floor Men's Bathroom A



- Accessibility signage is too high
- There is another sign on the opposite wall at the same height

Ground Floor Men's Bathroom A



- Accessible entrance
- All accessibility signage should be at the same level everywhere

Ground Floor Men's Bathroom A



- Accessible entrance view
- Trash can should not be underneath dispenser
- Same view from stair door

Ground Floor Men's Bathroom A



- Is the stall wall accessible?
- There are at least two other doors where the sign indicating accessibility is placed on a stall wall and not on the door itself. A visually impaired individual could mistake the wall for the door
- Outside coat hanger could cause injury. Other doors have the same issue
- Lock could be a problem

Ground Floor Men's Bathroom A



- Reverse in, forward to lock door, then position
- Massive space between wall and toilet
- Side transfer may not be possible
- Urinal bar also far away
- There are better accessible urinals and grab bars to have
- Same setup in Ground Floor Men's Bathroom B

Men's Bathroom A



- This is the only horizontal grab bar next to a urinal in an “accessible” area in the building – and it makes the most sense
- There should be a grab bar on both sides for balance and strength dominance assistance
- Install a floor urinal wherever accessible urinals are located

Ground Floor Men's Bathroom A



- [Dyson Airblade 9kJ | Dyson](#)
- \$1,199.00
- HEPA filter (est. \$79/each, requires monitoring/replacing)
- 2 in this bathroom
- 1 in women's ground floor bathroom
- Accessible sink sign
- Paper towel dispenser may be too high

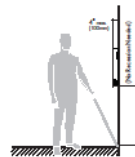
Dyson Airblade 9kJ ADA Specs

ADA Guidelines



Mobility access within washroom facilities

Because the Airblade 9kJ hand dryer is primarily installed in a restroom setting, it must comply with at least two primary accessibility requirements. The first is that the unit be placed on an accessible route but not protrude into any required accessible clear area of other items, such as a door, sink, water closet, urinal or fixed waste receptacle. The second is the mounting height relating to reach range and space requirements to use the unit itself. State or local codes may require more stringent accessibility standards when facilities are newly constructed or altered. An accessible toilet room is comprised of an accessible entrance, accessible turning space, and at least one type of accessible dispenser and fixture of each type. The Airblade 9kJ hand dryer would be considered a wall-mounted unit similar to a towel dispenser.



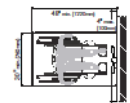
Clearance for wall-mounted protruding objects:

Airblade 9kJ is less than 4 inches protruding from the wall. Traditional hand dryers that protrude beyond the 4" are allowed to be of an unlimited distance by ADAAG as long as they are mounted at 27" above finished floor (AFF) or lower so that they overlap the cone detection range. Objects mounted with their leading edges at or below 27" (685 mm) AFF may protrude any amount; however, protruding objects should not reduce the clear width of an accessible route or maneuvering space. Any retrofit installation must comply with the newest and most stringent code standards.



Forward reach:

Often accessibility code concepts are concerned with people in a seated position who use wheelchairs, which naturally limits the height and depth of their reach range. Because of the design of the Airblade 9kJ hand dryer, it is assumed that a front approach is the only way the unit can be properly used, therefore the side approach standards should not apply.



Forward reach over an obstruction:

A clear area in front of the unit should be a minimum of 30" wide by 48" of length. This area can overlap a circulation path but should not overlap other required accessible areas, for example, a lavatory sink in restrooms with access to more than one user at one time. Single use restrooms can overlap accessible areas due to the fact that they are used by only one person at a time.

Dyson Airblade 9kJ accessible installation matrix:	Yes/No	Comp. Exem.
Does the unit have the required front approach 20" x 48" clear floor clearance?	Yes	Yes
Does the reach range exceed 40" maximum height above the finished floor surface?	No	Yes
Is the hand dryer mounted at a height where it is considered a protruding object?	No	Yes
Does the front edge project more than 4" into the path of travel when properly mounted?	No	Yes
Does the unit provide the proper 9" toe clearance?	Yes	Yes

Conclusion

Based on our review of data provided by Dyson for the Airblade 9kJ hand dryer it appears that if properly installed per manufacturer's recommendations for height, and the design professional allows the proper front approach clear area with no conflicting overlapping accessible areas, then the unit should comply with accessible requirements.

*Source: ADA Accessibility Guidelines for Buildings and Facilities (ADAAG), Section 4, Accessible Elements and Spaces: Scope and Technical Requirements.

Ground Floor Men's Bathroom B



- No accessibility signage

Ground Floor Men's Bathroom B



- Turning radius may not be legal
- Door may not stay open while trying to get in

Ground Floor Men's Bathroom B



- Looks like the left urinal is attempting to be “accessible”
- Add horizontal grab bars?
- If the entire bathroom is not accessible, accessibility signage should not be used anywhere
- Sink area is not “accessible either

Ground Floor Ramp



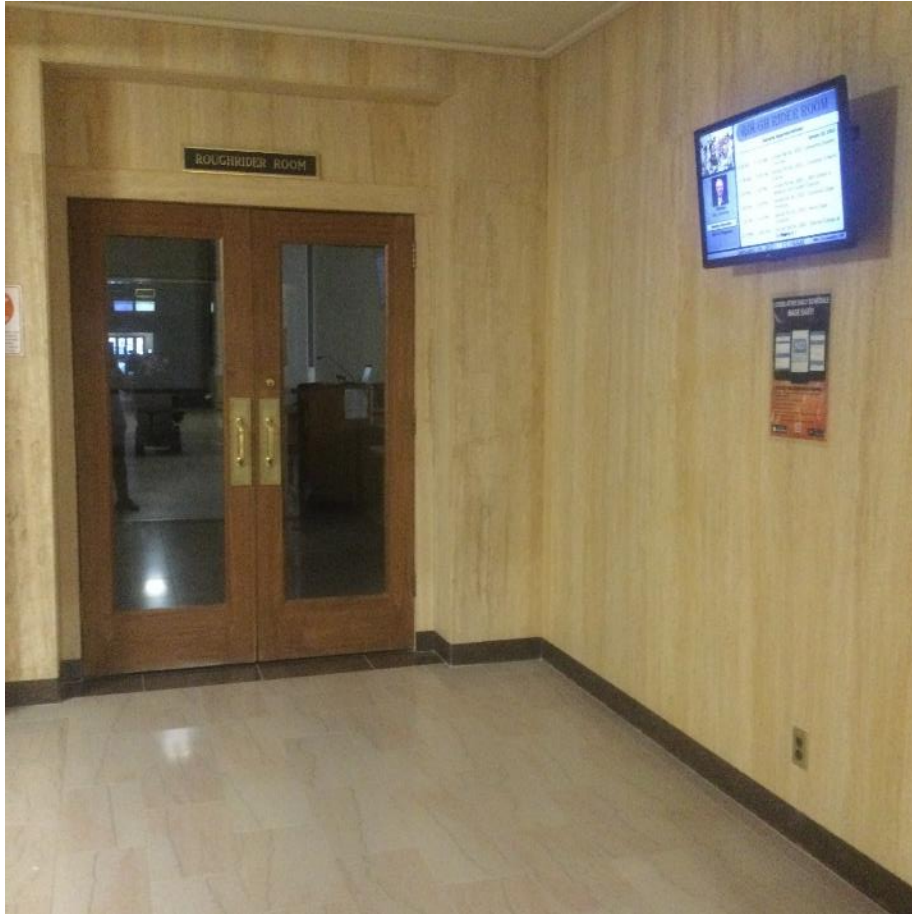
- The architect said this was not ADA compliant somehow...

Red River Room



- Can access be given without door alterations?
- Good height for the TV
- Similar situation for Sakakawea Room

Roughrider Room



- TV height is too high
- No change to doors

Small Elevator keypads – 37 total



- Who manufactures these?
- When were they installed?
- Do they get tested to ensure they are working properly?
- If so, how often?
- What happens if one breaks?
- Can pressure sensitivity, volume, tone, reaction speed, voice speed be changed?
- Post instructions on how to operate?

Large Elevator keypads – 2 – Ground floor



- Why are these different from the other 37?
- Same questions apply regarding the small elevator keypads

Executive Elevator Screens A, B, C, D



- Can these be programmed to better assist visually/hearing impaired?
- Who programs them?

Ground Floor Senate Bathroom



- Accessibility signage is too high
- Also on opposite wall

Ground Floor Senate Bathroom



- Accessible entrance

Ground Floor Senate Bathroom



- Another accessible stall wall?
- There is also a judicial wing bathroom accessible stall missing door signage, but it is on the stall wall
- Why is there no signage on the door, but a coat hanger is?
- Two judicial wing bathrooms have accessibility signage on the inside of the accessible stall door

Ground Floor Senate Bathroom



- Looks like this was 2 stalls – wall with grab bar and toilet removed
- Reverse in, forward to close door, proceed to perhaps block the toilet, depending on need

Ground Floor Senate Bathroom



- Accessible sink and soap dispenser
- Why not cover all sink plumbing?

Ground Floor Senate Bathroom



- Most, if not all, bathrooms in the building have this paper towel dispenser
- Could not find ADA compliance documentation
- Why so far from accessible sink?

Ground Floor West Door



- Automatic door
- Why isn't there one on the Judicial wing entrance/exit door?

Ground Floor West Door Ramp



- Do not remember what the architect said about this ramp

Ground Floor Women's Bathroom



- No accessibility signage

Ground Floor Women's Bathroom



- Why is the signage inside the second door?
- Signage is too high

Ground Floor Women's Bathroom



- Good set up
- Cover all sink plumbing

Ground floor Women's Bathroom



- Reverse in, and pull the door closed at the same time?
- What is with the gaps between the toilet and the grab bar?
- Ripping a stall out is not necessarily “accessible” or “compliant”

House Chamber



- Where are the ramps?
- There are none in the chamber
- The House and Senate chambers were not included in the “accessibility” study done by the architect hired by OMB

Senate Chamber



- Who built the existing ramps admitted to in SGVA testimony on 1.21.21?
- Built when?
- Meet current ADA compliance?
- Why are they not in use in either chamber?

Prairie Room



- Can these doors be opened and unaltered when the room is in use?

Prairie Room



- Change the table before altering room
- Same suggestions about leaving the room doors alone

2nd Floor Offices



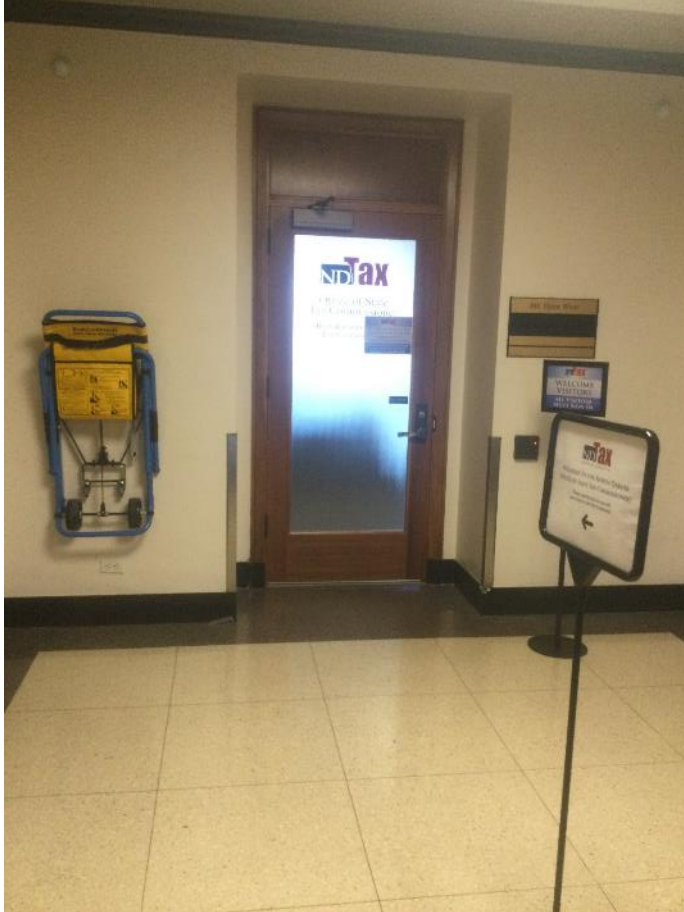
- Why are there not two doors here?

Executive Wing Department Floors 3-18



- Accessible signage for Executive wing bathrooms should be removed, as they will not be ADA compliant based on door width alone

Executive Wing Department Floors 3-18



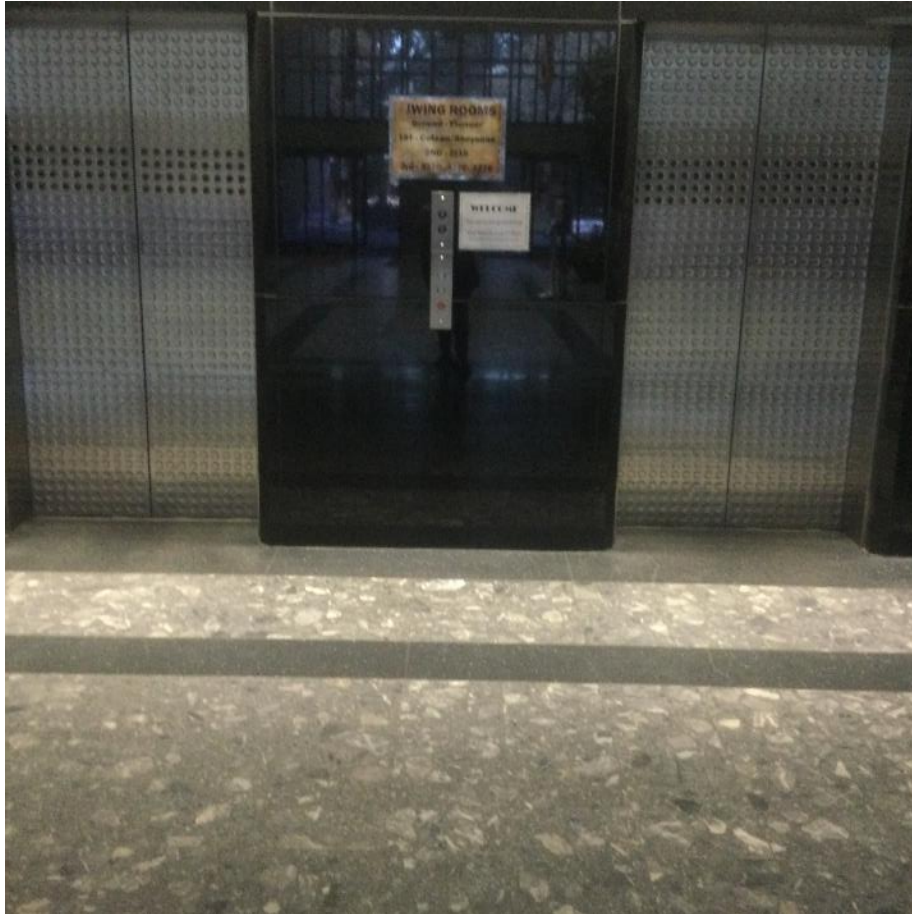
- Signage outside all department doors should be consistent and consider visually impaired
- Sign could be mobility impediment

Executive Wing Department Floors 3-18



- Trash can blocking keypad access
- This occurs on multiple floors

Judicial Wing Elevators



- No keypad
- No accessibility signage
- Poor signage
- Ironic, given this is the “accessible” wing
- Identical occurs on 1st, 2nd and 3rd judicial floors

Senate Elevator – First Floor



- Ground, 1st, 2nd floors
- No accessibility signage
- No external signage on 1st floor
- I forget this elevator exists, and it's right by the Legislative Information Kiosk

Judicial Wing – bathroom signage



- All judicial wing women's bathrooms

Judicial Wing – bathroom signage



- All judicial wing men's bathrooms

Judicial Wing – bathroom entrance



- Also women's bathroom
- Same set up on 2nd floor men's and women's bathrooms

Judicial Wing – All Elevator Bathrooms



- Cannot access soap without water issue
- This is an issue in all Judicial wing bathrooms by the elevators
- Why not have soap on same wall as paper towels?
- Move a soap dispenser to wall where unused paper towel dispensers are?
- Cover sink plumbing

Judicial Wing – All “accessible” stalls



- Original grab bars
- Bar length should be longer so person won't be blocking toilet before transfer
- Vertical bar would help with this also
- All “accessible” judicial wing stalls have similar set up
- Most, if not all also have a coat hanger close to door lock, which could be a safety hazard and should be on the back of the stall door at an accessible height

Judiciary Wing – “Accessible” urinal



- I do not understand how this can work sitting or standing with a mobility impairment
- Heat register changes access angle
- Similar lay out for all judicial wing “accessible” urinals

Judicial Wing – 1st and 2nd Inside bathrooms



- Difficult to open door with strap in a manual or powered wheelchair
- Need to reverse until there's enough room while still holding strap and driving chair
- How does a person hold the door open as far as they can, AND move through the door unassisted?
- Judicial wing 1st floor men's and women's, 2nd floor women's, not men's

Judicial Wing – 1st Floor



- All 6 bathrooms inside Judicial wing halls have a “first” door with correct signage
- This first door does not meet 5 pound pressure limit standard, or the 3 second rule

Judicial Wing – Hallway Bathrooms



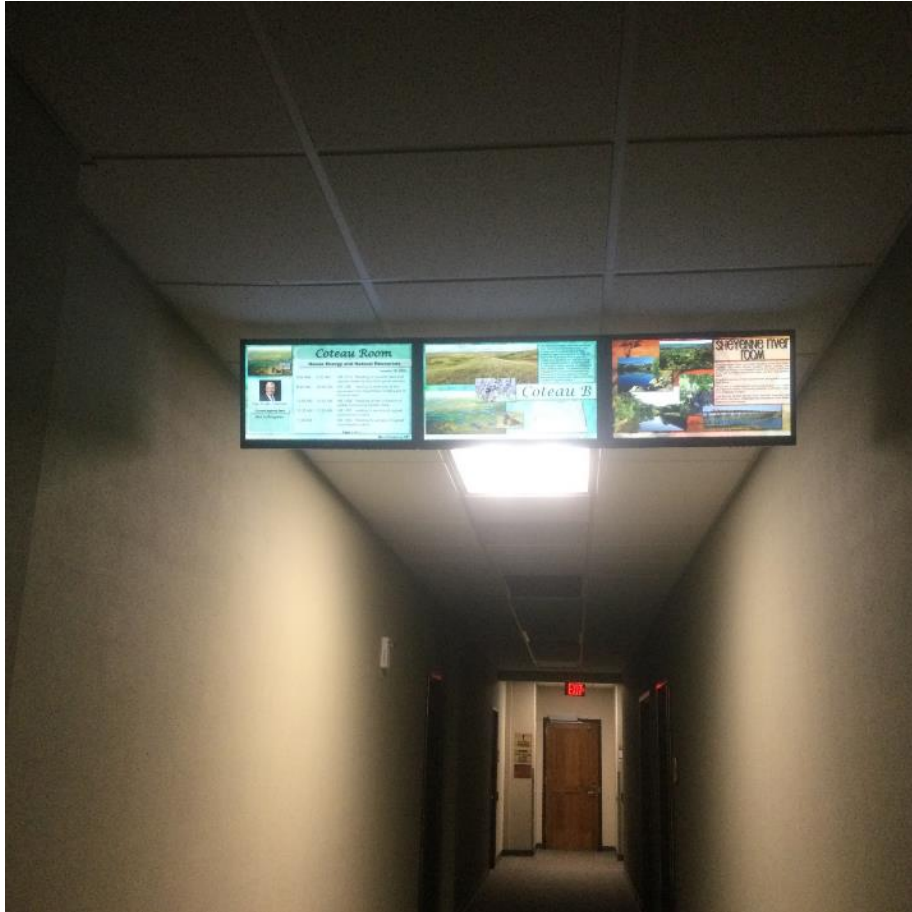
- Door #2
- Occurs with all bathrooms inside Judicial wing hallways
- Trash can obstacle
- Easy to push door going in, may be difficult to open coming out due to counter location

Judicial Wing – 2nd Floor



- Sink and paper towel setup inside all Judicial wing bathrooms
- Cover all sink plumbing

Sheyenne/Coteau Rooms – 1st Floor



- TV height is way too high
- This area is confusing, as there is poor signage
- Coteau is one room now, not two
- TVs next to rooms are at lower height

Judicial Wing – 1st Floor



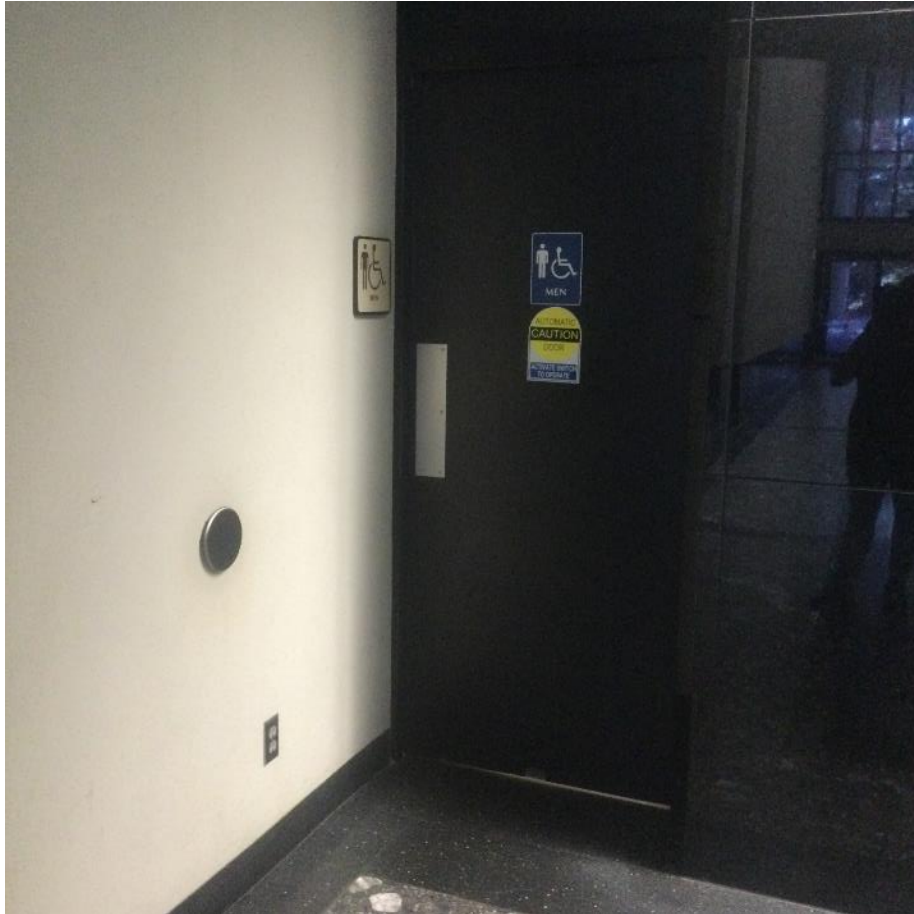
- Missing door handle, but just think...you can hang your coat up, and not use the bathroom

Judicial Wing – 1st Floor



- “accessible sink”

Judicial Wing – Bathrooms



- Ground floor and third floor men's and women's bathrooms

Judicial Wing – Ground Floor



- Move soap to paper towel dispenser to make it easier to reach
- Cover all sink plumbing

JWing – Ground Floor



- Accessibility signage
- Coat hanger is on the outside....why?
- How does a person using a wheelchair reach it?

Judicial Wing – 2nd Floor



- This is the sink and paper towel setup inside all Judicial wing hall bathrooms
- Cover all sink plumbing

Judicial Wing – Women’s Ground Floor



- Missing door handle
- Put in request during 2019 session
- Also missing in women’s 1st floor Judicial wing bathroom

Pioneer Room



- When were the TVs put in?
- Who decided placement and size?

Judicial Wing – 2nd Floor



- Great sign

Judicial Wing – 3rd Floor



- Target (button) does not work on first contact – going in
- Random signage like door signage throughout this floor

In closing...

- Please delay voting on SB2146 so it can be amended to 2010 ADA standards
- There needs to be a proper ADA assessment done by a professional specializing in ADA to include the House and Senate chambers
- Some of the major ADA upgrades need to be completed before December 31st, 2022
- A legitimate ADA compliance position should be made a part of this appropriation to consistently ensure that the estimated 20,000 North Dakotans with different abilities can begin to, and continue to, have a place in the legislative process and in the Capitol