

North Dakota State Hospital Top Issues

Below is a list of assets that are at, or past, their useful life and are in need of replacement.

This list, although not comprehensive, highlights the majority of assets in **Alarm** conditions.

LaHaug Building

- Chiller, Cooling Tower, and Chilled Water pumps
- (11) Air Handling Units, original to 1982, serving the majority of the facility
- Electrical Distribution in the entire facility
- Security cameras throughout entire facility
- Carpet tiles and VCT flooring through most of the facility

GM Building

- Steam and condensate piping throughout entire facility
- Multiple Air Handling Units original to 1965
- Multiple Unit Ventilators original to 1965
- Temperature controls through entire facility
- Electrical Distribution in the entire facility
- Security cameras throughout entire facility

New Horizons Building

- Steam and condensate piping throughout entire facility
- Chiller, Cooling Tower, and Chilled Water pumps
- Domestic hot water heaters
- All Air Handling Units original to 1971, 1985, and 1987
- All Unit Ventilators original to 1968, 1971, and 1985
- Temperature controls through entire facility
- Electrical Distribution in the entire facility
- Exterior doors and windows for entire facility
- Interior carpet in hallways and offices
- Security cameras throughout entire facility

Learning Resource Center

- Temperature controls in rooms
- Exterior Doors
- Exterior bricks and mortar for the entire facility
- Security cameras throughout entire facility
- Carpet tiles and VCT flooring through most of the facility
- Interior doors through most of the facility

North Dakota State Hospital Issues (Caution)

Below is a list of assets nearing the end of their useful life and soon needing replacement. This list, although not comprehensive, highlights the majority of assets in **Caution** conditions.

LaHaug Building

- (4) Air Handling Units, original to 1994 and 1997, serving isolation suites and basement
- Exterior doors, window, exterior bricks, and exterior concrete
- Roofs on the majority of the facility
- Interior carpet, doors and ceilings throughout entire facility
- Security cameras throughout entire facility

GM Building

- Hot water pumps and distribution piping
- Chilled water piping through entire facility
- Exterior doors, window, exterior bricks, and exterior concrete
- Fire alarm system serving the entire facility

New Horizons Building

- Chilled water piping through entire facility
- Roofs on the majority of the facility
- Exterior bricks, and exterior concrete
- Fire alarm system serving the entire facility
- Security cameras throughout entire facility

Learning Resource Center

- (2) Air Handling Units, original to 1991, serving 3rd floor
- Hot water pumps and distribution piping
- Steam distribution piping
- Chilled water piping through entire facility
- Electrical Distribution in the entire facility
- Roofs on the majority of the facility
- Exterior windows, and exterior concrete
- Fire alarm system serving the entire facility

The State Conducted Six Infrastructure Studies During the 2019-2021 Biennium for the North Dakota State Hospital

Key findings and take away are as follows:

The current State Hospital campus has disintegrated and surpassed maintenance efforts

\$148
MILLION



Some buildings are condemned, and many are beyond repair



Current deferred maintenance funds are insufficient to keep up with demand



Three patient care buildings are old and inefficient and not designed for state-of-the-art care



Underground tunnels are crumbling and require demolition

A new treatment campus designed to modern, healing standards improves patient safety and outcomes



Speed healing and shorten hospital stays



Reduce physical barriers and improve safety technology for patients and team members



Provide for a more peaceful, tranquil setting and increase satisfaction for patients and team members



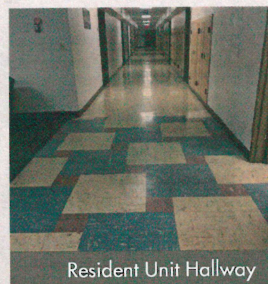
Create a one-building hospital, reducing total staff needed and improving energy efficiencies



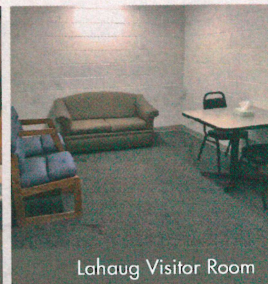
The ND State Hospital
EST. 1885



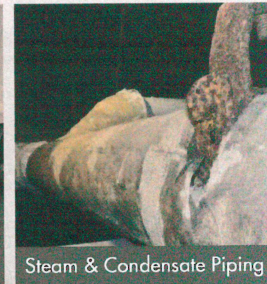
ND Statehood
EST. 1889



Resident Unit Hallway



Lahaug Visitor Room



Steam & Condensate Piping

The State Hospital plays a singular role in patient care as the only facility in North Dakota to serve as a:

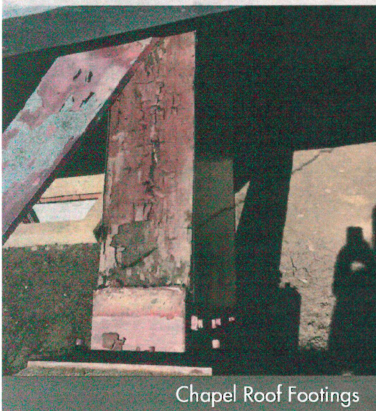
- Psychiatric hospital
 - Serving jail inmates
 - Providing forensic assessment for court competency and criminal responsibility
 - Providing care to individuals found Not Guilty by Reason of Insanity
- Residential treatment facility for Sexually Dangerous Individuals
- Psychiatric hospital and residential facility providing court-ordered services as condition of bond or in lieu of prison
- Acute psychiatric hospital for the Jamestown and Devils Lake regions

The DOCR is interested in taking ownership of LaHaug. Collaboration with DOCR (Department of Corrections and Rehabilitation) is underway to conduct an architectural analysis of LaHaug for repurpose to a prison.

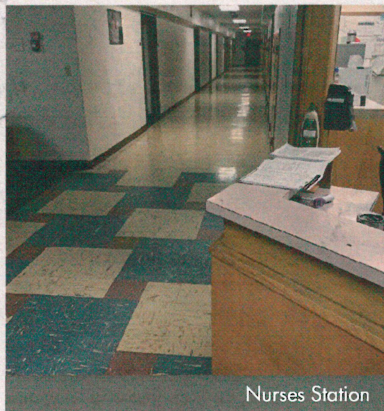


The state hospital also serves as the secondary hospital for six ND regions, accepting patients from other hospitals for specialized treatment response.

NORTH
Dakota | State Hospital
Be Legendary™ HUMAN SERVICES



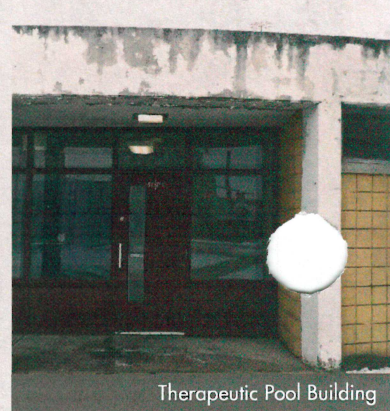
Chapel Roof Footings



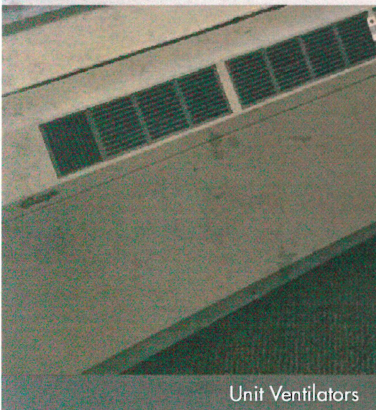
Nurses Station



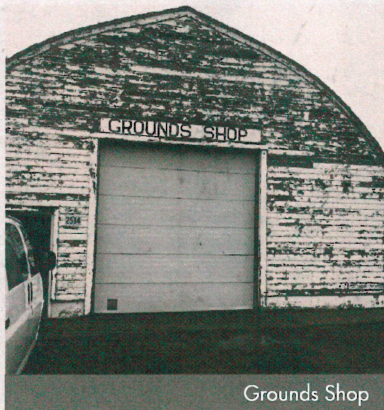
Shop Ceiling



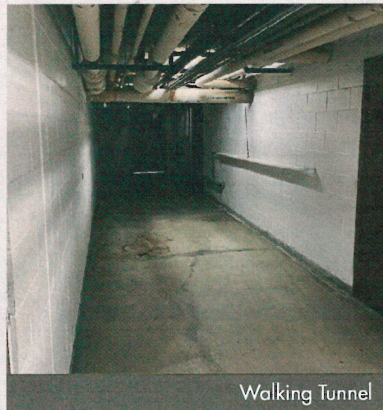
Therapeutic Pool Building



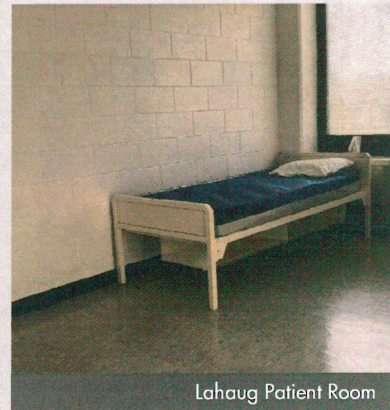
Unit Ventilators



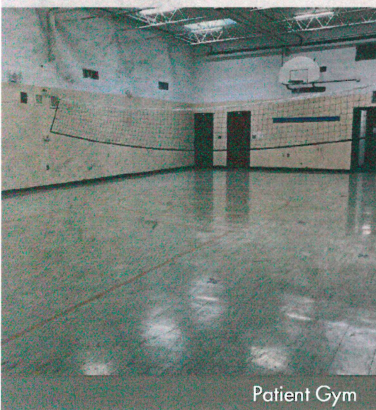
Grounds Shop



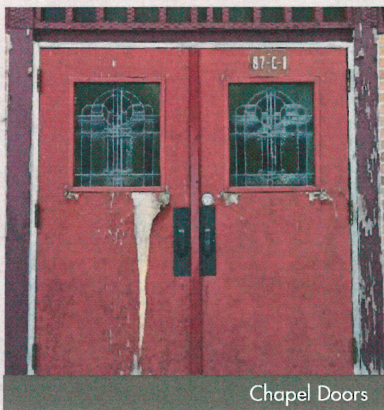
Walking Tunnel



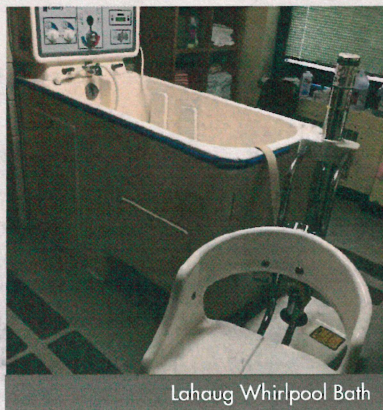
LaHaug Patient Room



Patient Gym



Chapel Doors



LaHaug Whirlpool Bath



Tunnel Floor