

North Dakota Game and Fish Department Potential Land Acquisitions

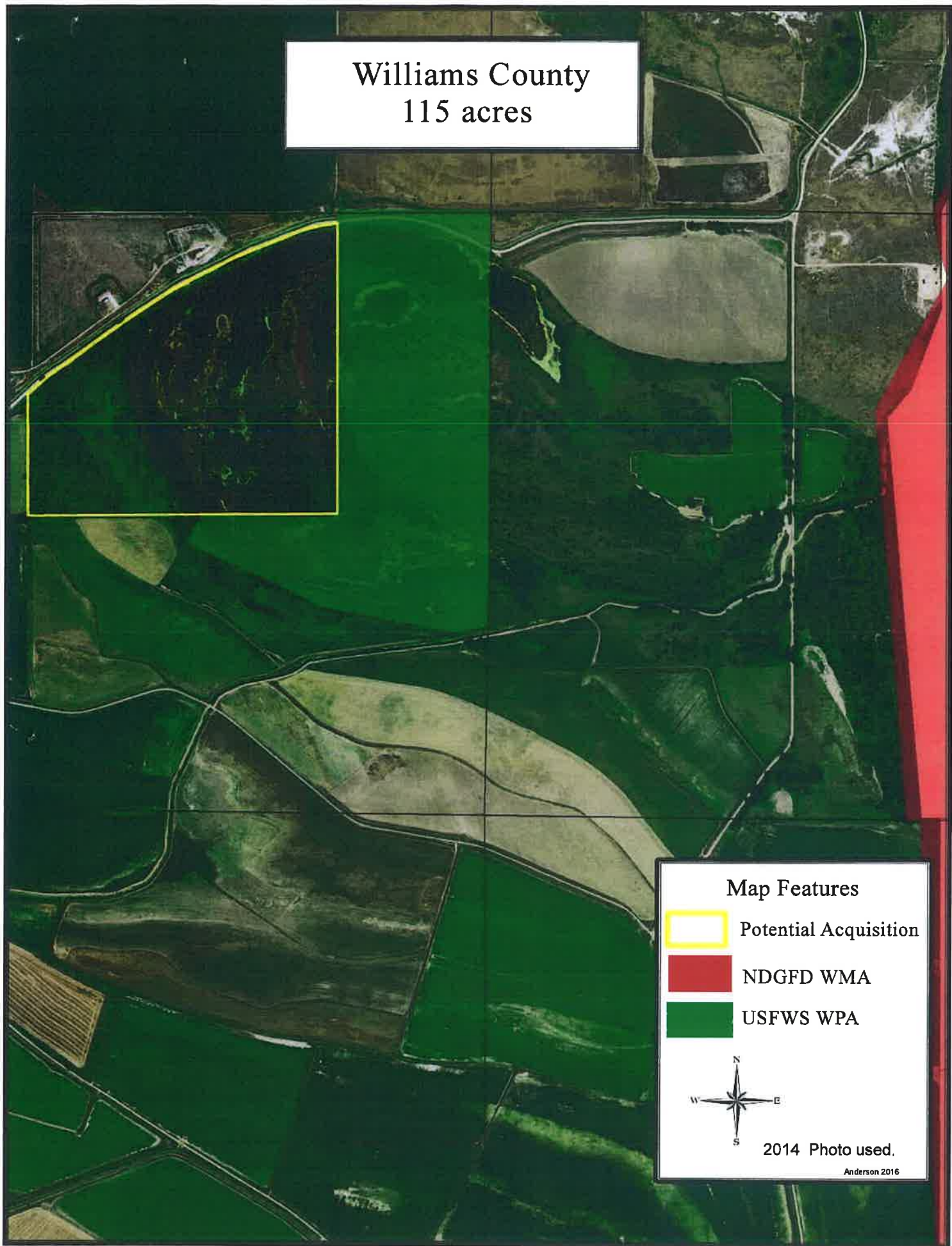
As of February 1, 2021

The Department has been contacted by individuals with the following tracts. They are interested in selling these tracts to the Department to be maintained as Wildlife Management Areas (WMA). Some opportunities may arise throughout the biennium that could get higher priority. The following list is in no particular order.

- 1) Williams County—115 acres—Next to WPA near Trenton WMA (floodplain and cattails).
- 2) Walsh County—80—Addition to Joliet Ferry WMA.
- 3) Sheridan County – 20 acres – Addition to Lonetree WMA.
- 4) Pembina County – 360 – Dunklee WMA addition. EWP on this piece with no Ag. use allowed.
- 5) Adams County – 480 acres – Land is currently in CRP
- 6) Hettinger County – 80 acres – Land is currently in CRP
- 7) Walsh County—140 acre—Along Red River
- 8) McLean County—160 acres—Mostly pastureland with small
- 9) Dunn County— 950 acres — Mostly Pastureland near Killdeer WMA
- 10) Nelson County — 87 acres — Hoghaug WMA addition on Stump Lake
- 11) McLean County 170 acres — Painted Woods WMA addition

A map for each potential acquisition is included.

Williams County 115 acres



Map Features

-  Potential Acquisition
-  NDGFD WMA
-  USFWS WPA





2014 Photo used.

Anderson 2016

Walsh County
80 acres

Map Features

-  Potential Acquisition
-  NDGFD WMA



2014 Photo used.

Anderson 2016

Lonetree Addition
20 acres



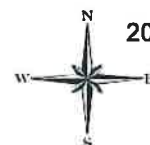
Map Features



Offer



NDGFD WMA



2012 Photo used.

Anderson 2014

USDA-FSA

Duncklee WMA Addition
360 acres

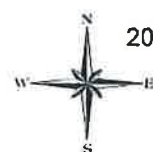
Map Features



Offer



NDGFD WMA



2012 Photo used.

Anderson 2014

USDA/FSA

Adams County
480 acres



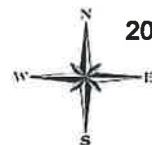
Map Features



Offer



NDGD PLOTS



2012 Photo used.

Anderson 2014

Hettinger County
80 acres



Map Features



Offer



NDGD PLOTS



2012 Photo used.

Anderson 2014

Walsh County
140 acre

Red River

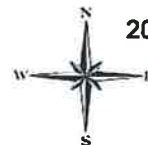
Map Features



Offer



NDGD PLOTS



2012 Photo used.

Anderson 2014

USDA-FSA

McLean County Potential Acquisition Approximately 160 acres

Butte, ND

Map Features

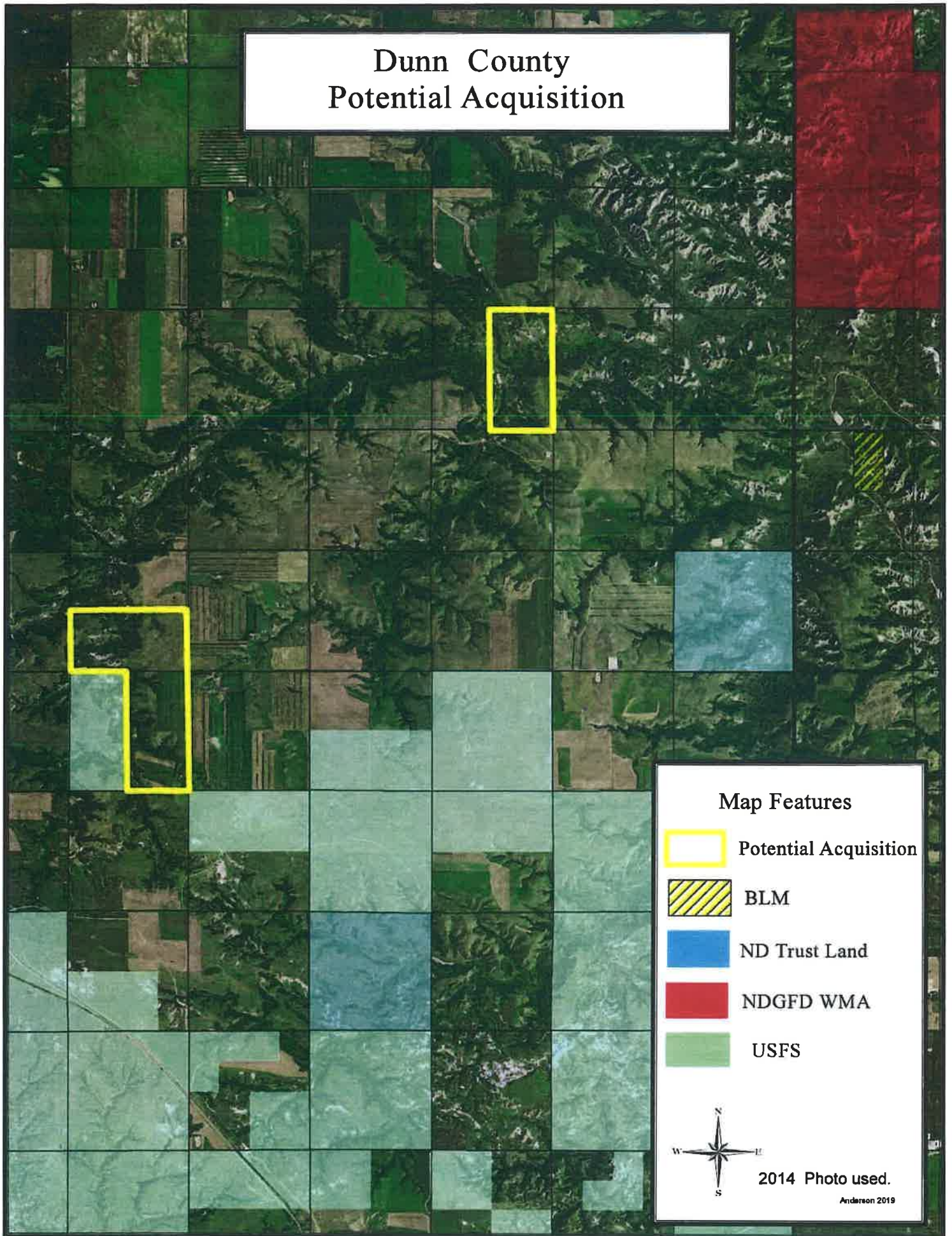
-  Potential Acq.
-  USFWS WPA



2014 Photo used.

Anderson 2016

Dunn County Potential Acquisition



Nelson County
87 acres

Stump Lake

Map Features

 Potential Acquisition

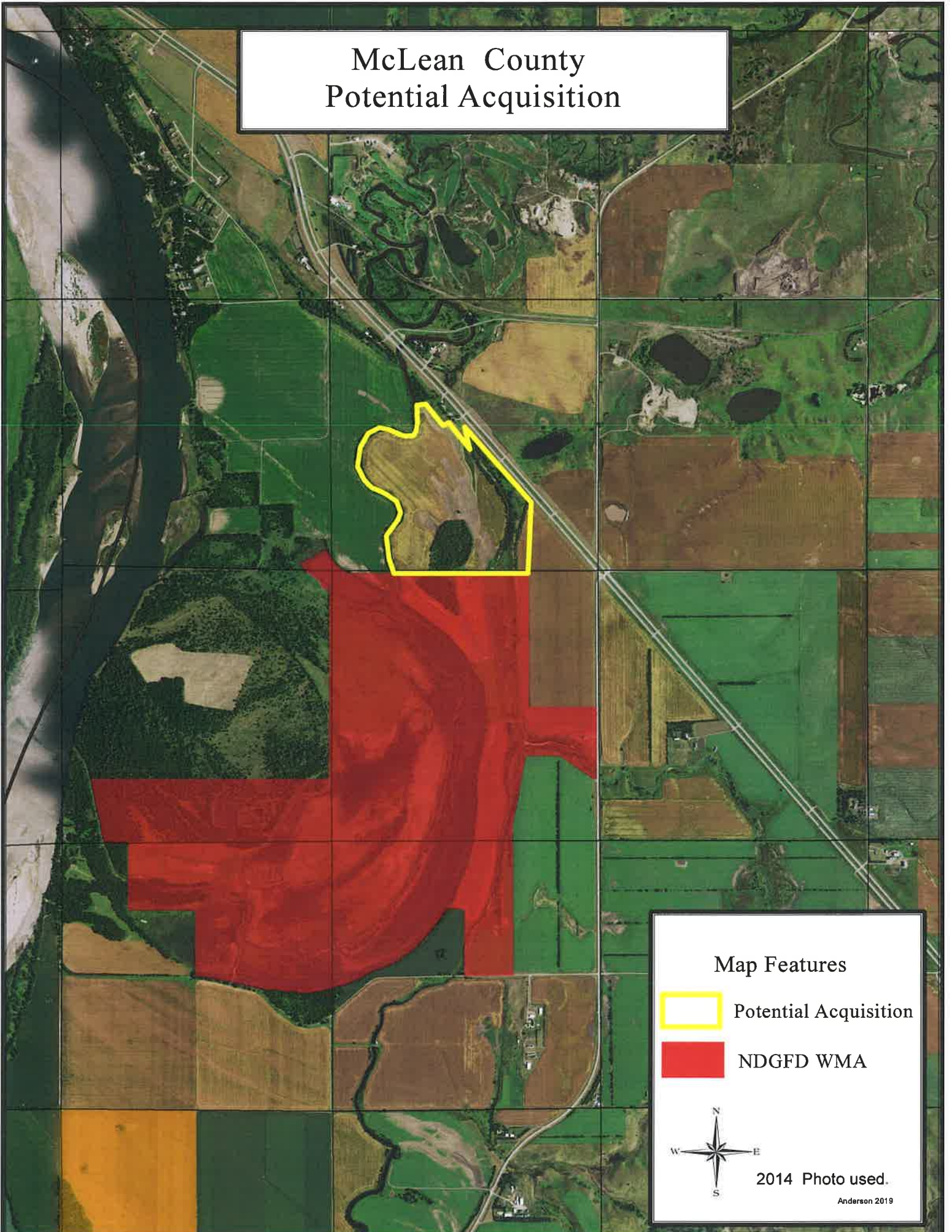
 NDGFD WMA





2014 Photo used.

Anderson 2016

McLean County Potential Acquisition



Map Features

-  Potential Acquisition
-  NDGFD WMA



2014 Photo used.

Anderson 2019