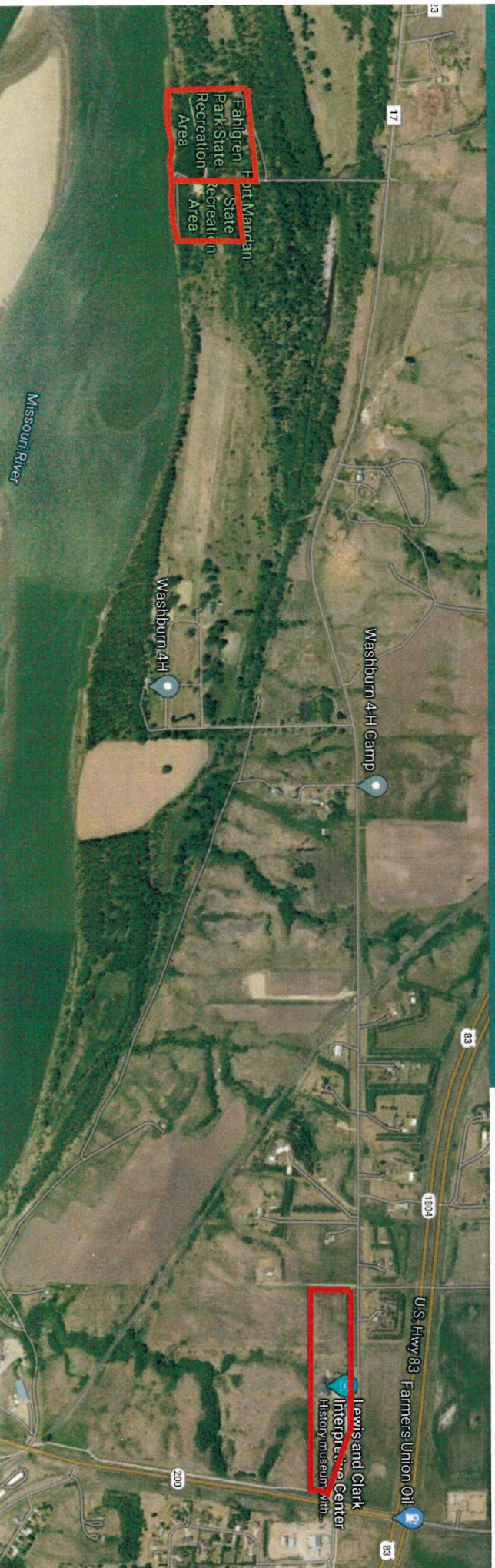




Lewis & Clark Interpretive Center & Fort Mandan  
Fort Mandan and Fahlgren Park are 2.4 miles southwest of the Lewis & Clark Interpretive Center. This includes an interpretive trail along the riverfront and five picnic shelters.

NORTH  
**Dakota** | Parks & Recreation  
Be Legendary.™



# Fahlgren Park

Owned by: NDPRD

21 Acres

Includes: a playground, one vault toilet,  
and two picnic shelters

# Fort Mandan

Owned by: Mclean County Historical Society

Land leased by: NDPRD (2015-2065)

11 Acres

Includes: a visitor center, a rental facility, picnic shelter,  
reconstructed fort, and a maintenance building.

Fahlgren Park

Fort Mandan

NORTH  
**Dakota**  
Be Legendary.™

Parks & Recreation



# Lewis & Clark Interpretive Center

Owned by: NDPRD

14.7 Acres

The Lewis & Clark Interpretive Center houses four permanent galleries, two temporary art and history galleries, an observation deck, a library, one rental event center with a catering kitchen, a museum store, walking trails and two picnic shelters.

With funding from the North Dakota Department of Transportation, the facilities serve as a designated rest area.

NORTH  
**Dakota** | Parks & Recreation  
Be Legendary.™



NORTH  
**Dakota** | Lewis & Clark  
 Be Legendary.™ INTERPRETIVE CENTER

★ Emergency Exit  
 Restrooms

