



SB 2017
2023-25 Appropriation Request
North Dakota Game and Fish Department Potential Land Acquisitions
As of January 3, 2023

The Department has been contacted by individuals with the following tracts. They are interested in selling these tracts to the Department to be maintained as Wildlife Management Areas (WMA). Some opportunities may arise throughout the biennium that could get higher priority. The following list is in no particular order.

- 1) Adams County – 480 acres – Land is currently in CRP.
- 2) Burleigh County – 152 acres – Property is entirely wetlands.
- 3) Dunn County – 950 acres – Mostly Pastureland near Killdeer WMA.
- 4) Hettinger County – 80 acres – Land is currently in CRP.
- 5) Lamoure County – 160 acres – Primarily wetlands.
- 6) McLean County – 30 acres – Addition to the Coal Lake WMA for improved access.
- 7) McLean County – 160 acres – Mostly pastureland with native woodlands.
- 8) Pembina County – 360 – Dunklee WMA addition. Enrolled in NRCS Emergency Watershed Protection, so no agricultural practices are allowed.
- 9) Walsh County – 140 acre – Located along Red River and enrolled in NRCS Wetland Reserve Program, so no agricultural practices are allowed.
- 10) Williams County – 348 acres – Trenton WMA Addition (floodplain and access to WMA).

A map for each potential acquisition is included.

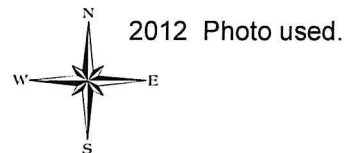
Adams County
480 acres



Map Features

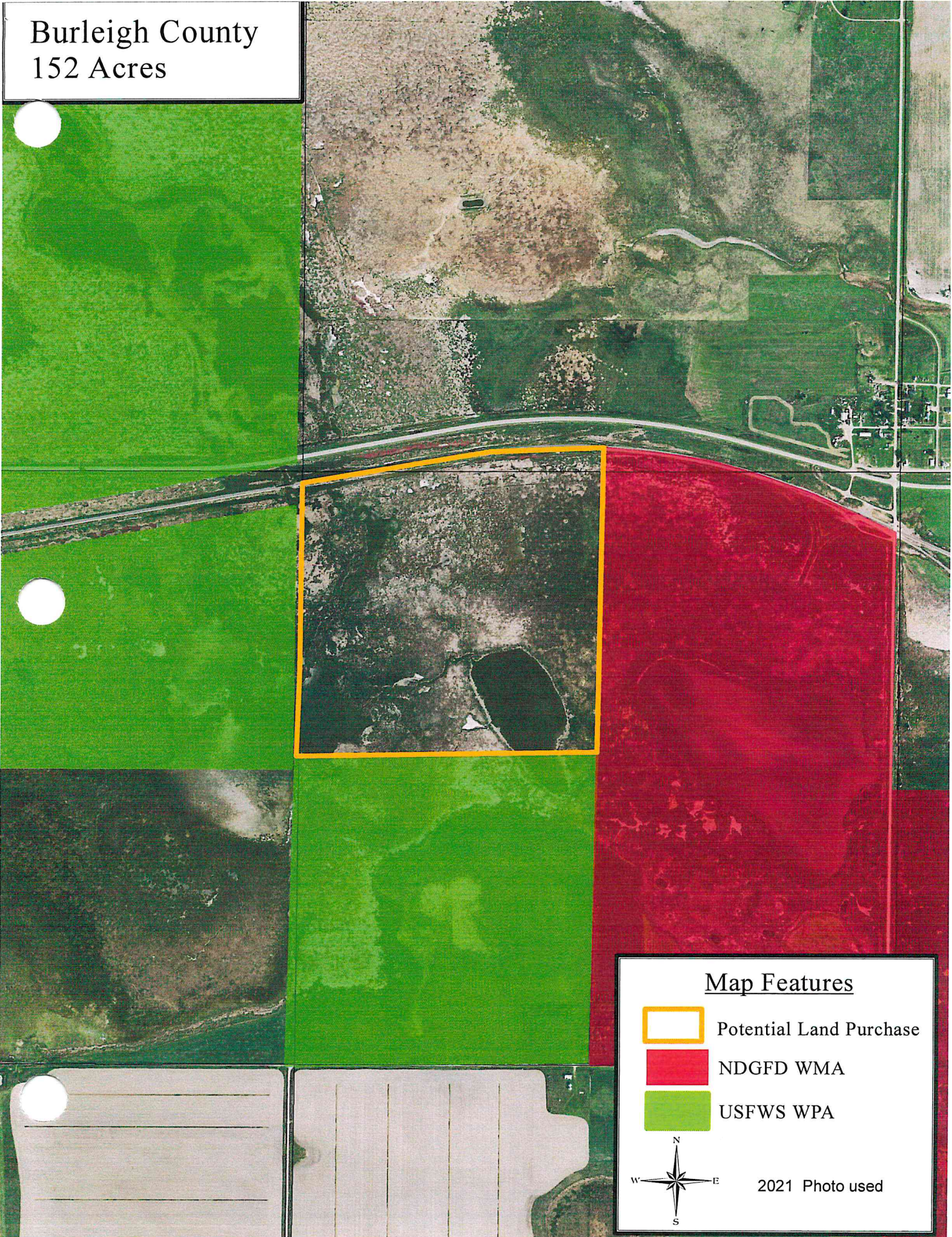
 Offer

 NDGD PLOTS






Anderson 2014

Burleigh County
152 Acres



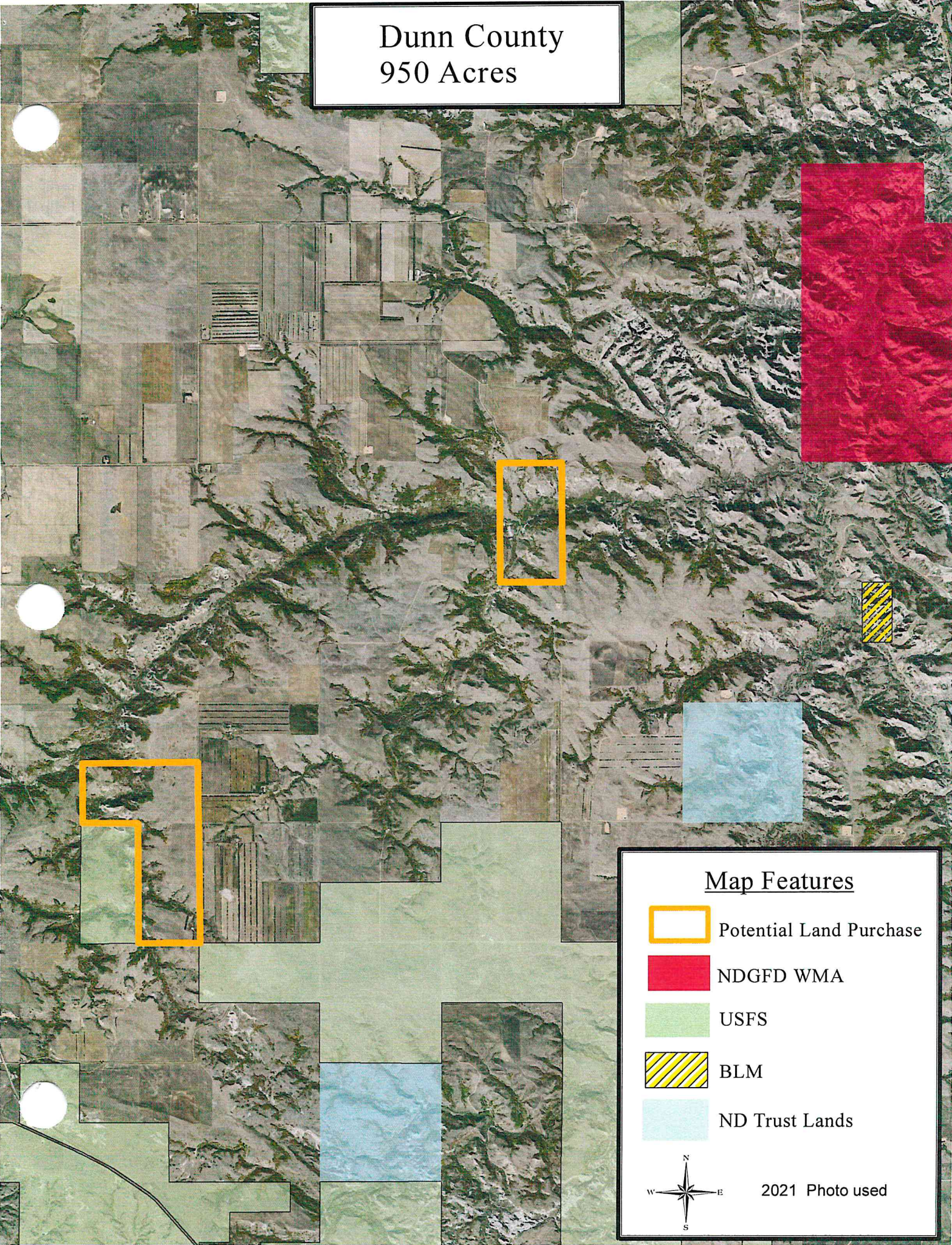
Map Features

-  Potential Land Purchase
-  NDGFD WMA
-  USFWS WPA








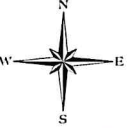
2021 Photo used

Dunn County 950 Acres



Map Features

-  Potential Land Purchase
-  NDGFD WMA
-  USFS
-  BLM
-  ND Trust Lands

 2021 Photo used

Hettinger County
80 acres



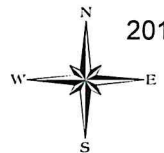
Map Features



Offer

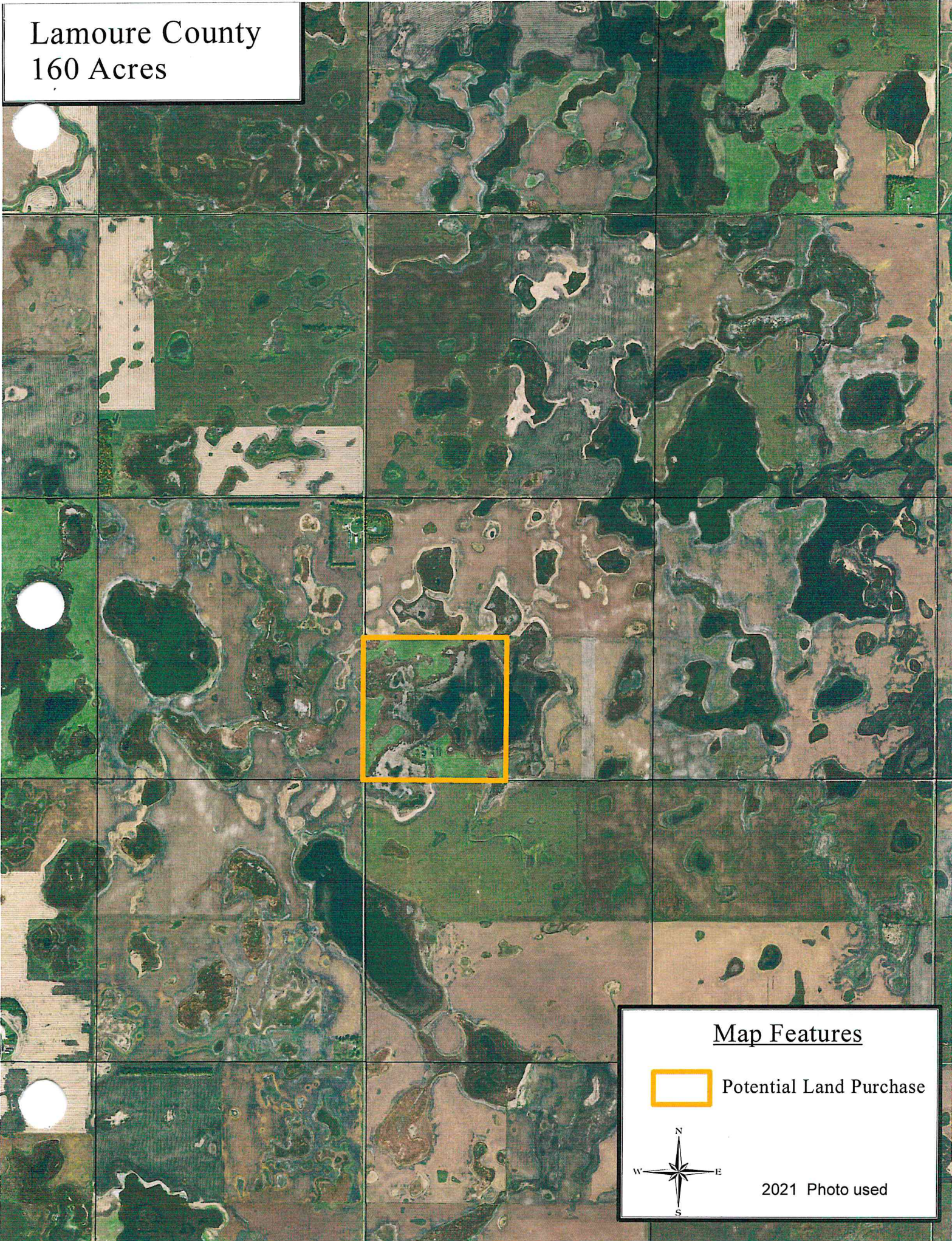


NDGD PLOTS



2012 Photo used.

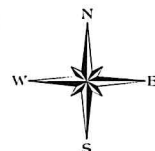
Lamoure County
160 Acres



Map Features

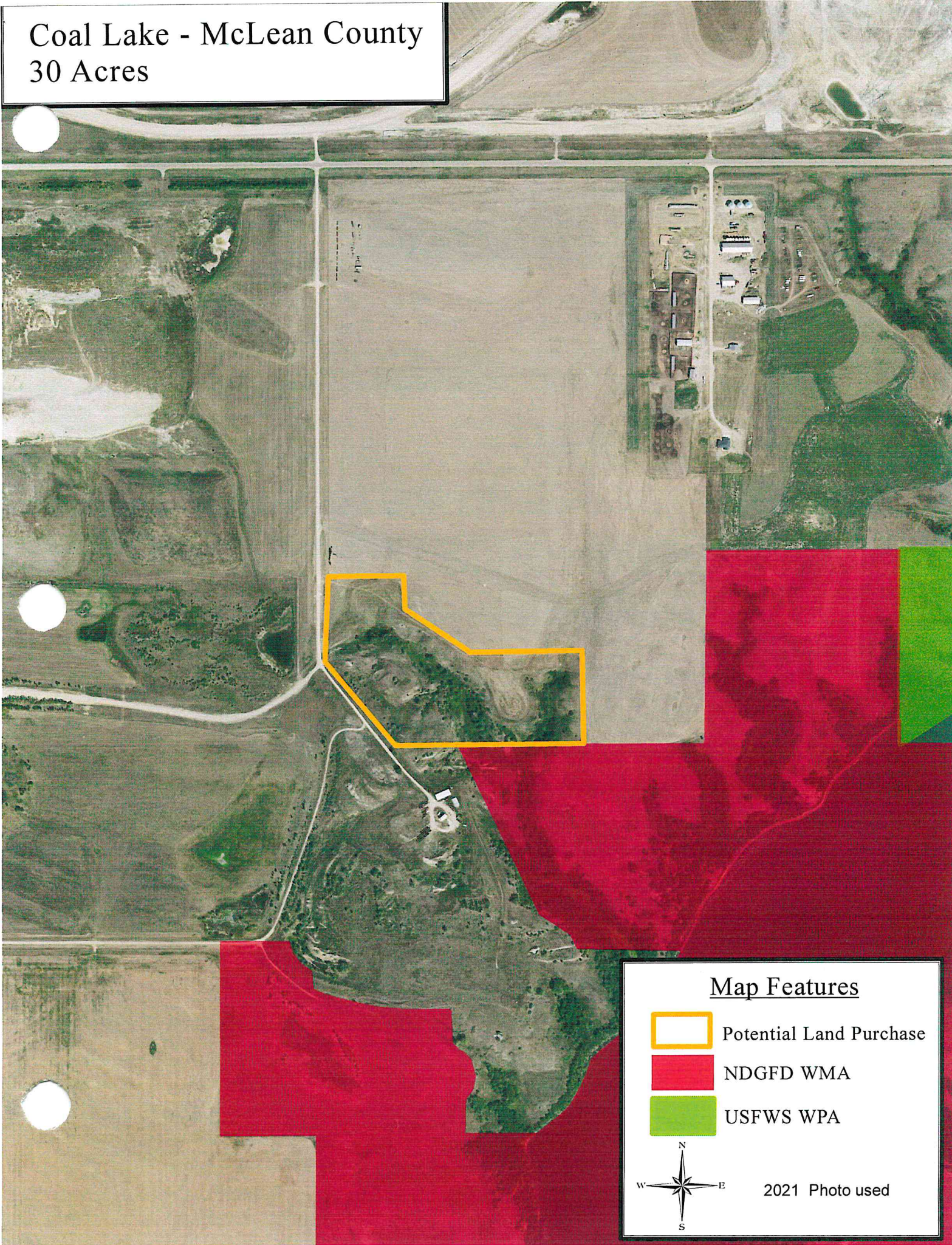


Potential Land Purchase






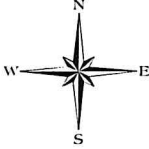
2021 Photo used

Coal Lake - McLean County
30 Acres



Map Features

-  Potential Land Purchase
-  NDGFD WMA
-  USFWS WPA

 2021 Photo used

McLean County Potential Acquisition Approximately 160 acres

Butte, ND

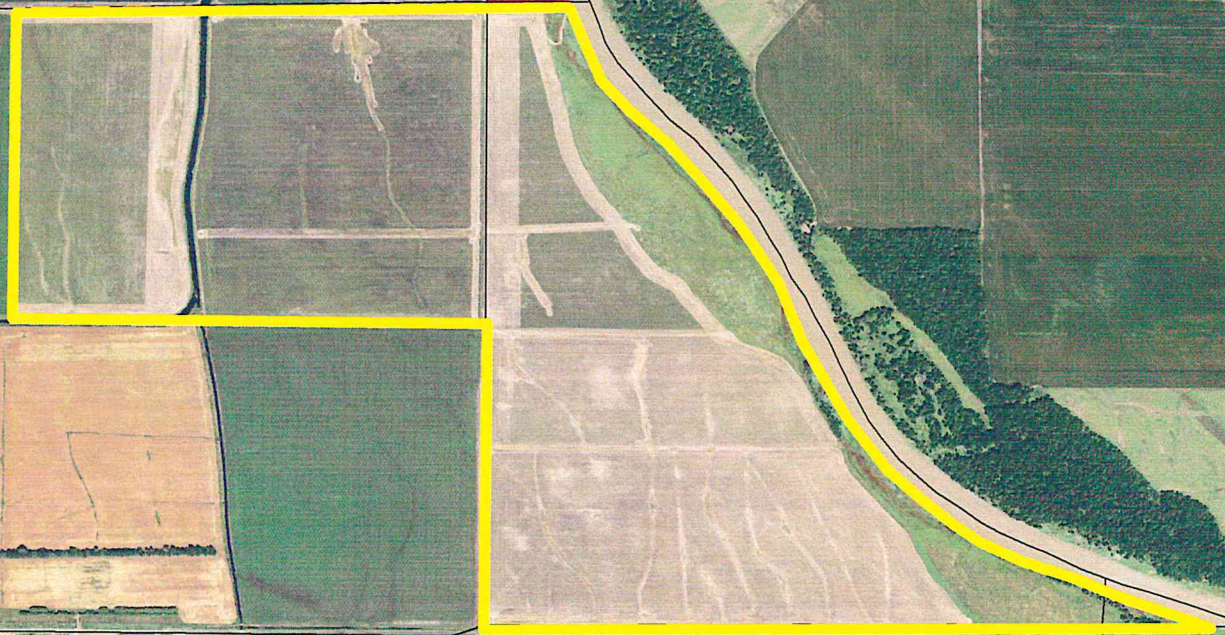
Map Features

-  Potential Acq.
-  USFWS WPA



2014 Photo used.

Duncklee WMA Addition
360 acres



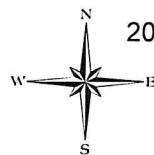
Map Features



Offer

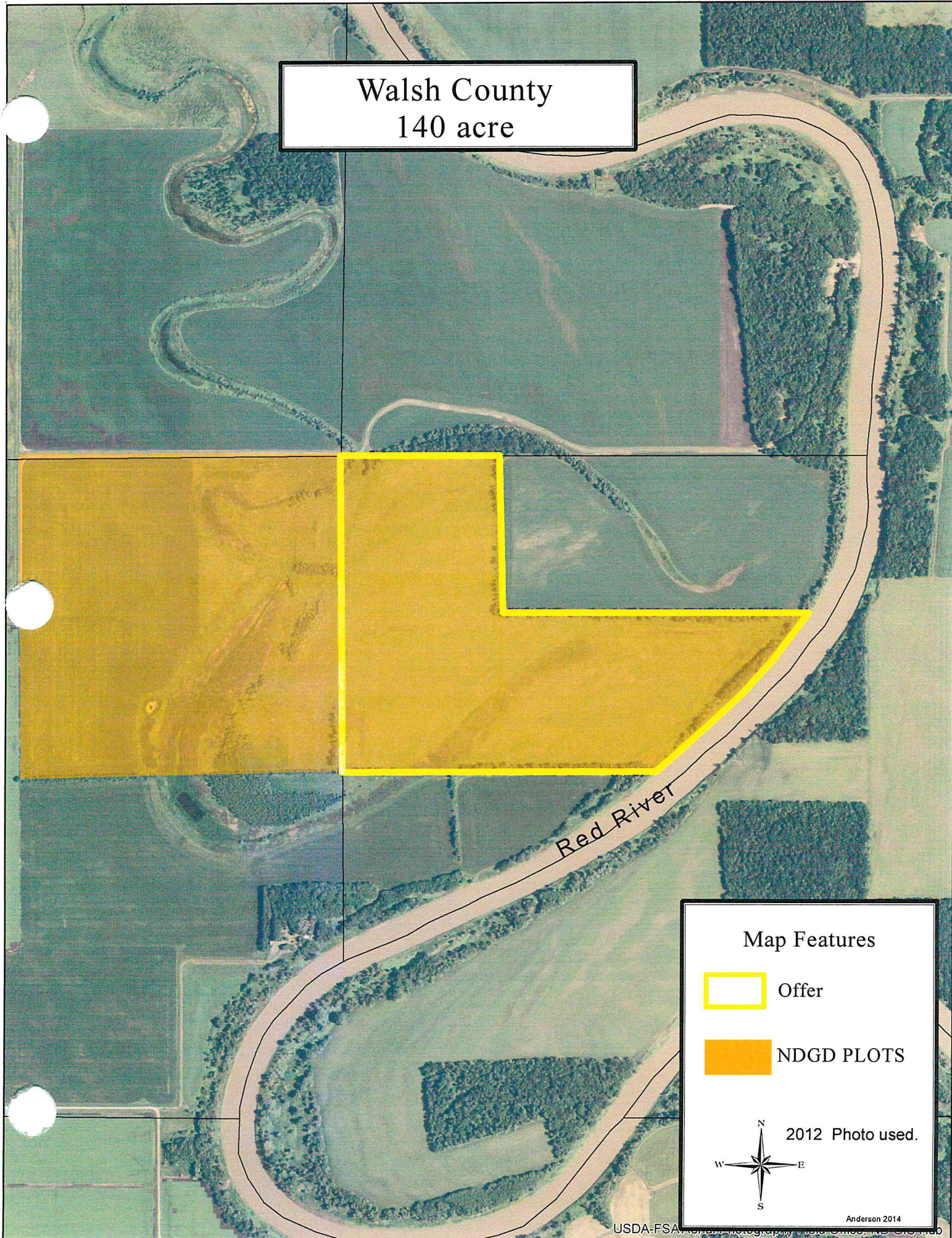


NDGFD WMA



2012 Photo used.

Walsh County
140 acre

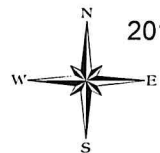


Red River

Map Features

 Offer

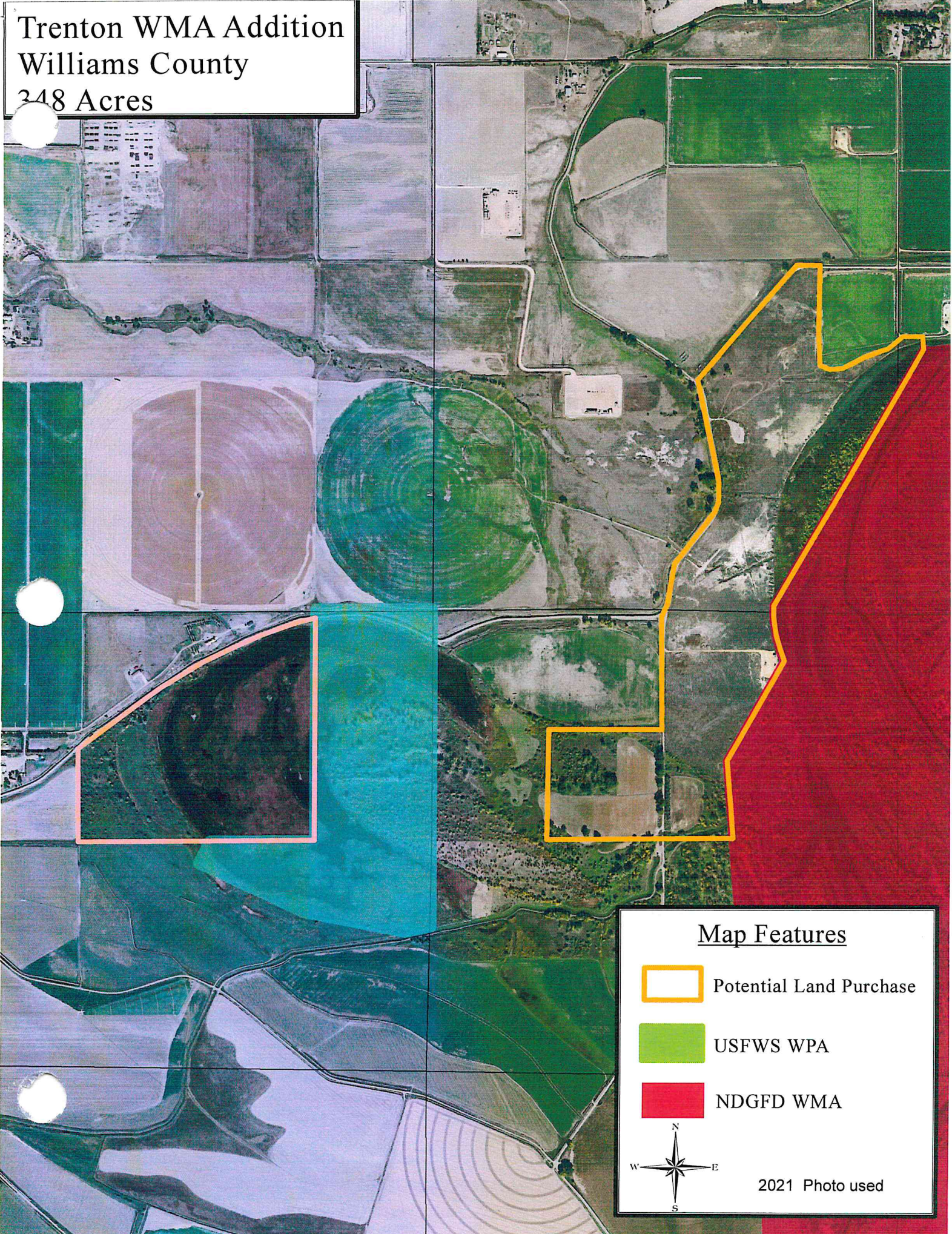
 NDGD PLOTS




2012 Photo used.

Anderson 2014

Trenton WMA Addition
Williams County
348 Acres

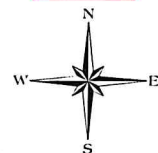


Map Features

 Potential Land Purchase

 USFWS WPA

 NDGFD WMA



2021 Photo used