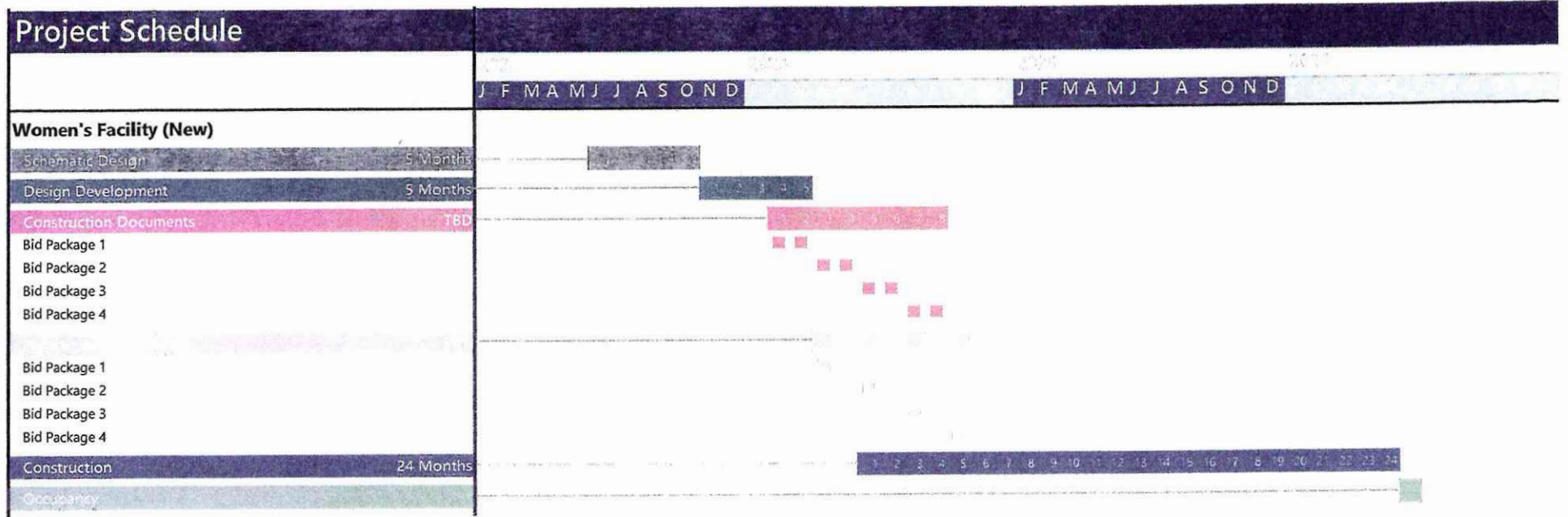


ND DOCR Correctional Facilities Study

December 22, 2022



* Est. 35 months *

Estimate

60% Spend - 23-25

40% Spend - 25-27

Pre-construction - 11 months - 20% of Budget

Construction - 24 months - 80% of Budget

Occupancy June/July 2026

\$97 million - 23-25 spend.

\$64 million - 25-27 spend.

Payments made @ milestones

at completion of design phase • completion of specific construction phases - final completion