

Good morning, Chairman Ruby and members of the House Transportation Committee. For the record my name is Representative Lisa Finley-DeVille. I'm a member of the Mandan, Hidatsa, Arikara nations and I represent the people of District 4A which encompasses the Fort Berthold Reservation. I have lived in Mandaree my entire life and have been living with oil and gas extraction for 15 years. I am not against fracking and oil production and support responsible development as with any industry.

Fort Berthold Reservation is in the center of the Bakken oil fields. Since 2009 oil and gas development has continued to grow and oil wells on Fort Berthold currently produce approximately 141,000 barrels of oil per day. That is a lot of oil that needs to be transported, resulting in more trucks on the road that transport everything from oil, waste products, water, and other materials that are used and produced on the well pad.

Fort Berthold has greatly benefited from the oil and gas development, but living with a busy industry does have serious implications for the communities. Especially for motorists that travel alongside oil field traffic. All residents that utilize the highway system in and around Fort Berthold Reservation would benefit from this study on creating a safety corridor on Bureau of Indian Affairs routes 14, 30 12, 4, 27, and 2, and North Dakota highways 22, 23, 1804, 8, 37, and 73.

Understanding the impact of traffic patterns and how truck traffic affects communities is important to keeping communities like Mandaree safe when they leave the safety of their homes. Highway safety corridors are designated stretches of roadways that have a higher incidence of accidents, fatalities, and injuries. These corridors are marked with signs and have increased enforcement measures to ensure that drivers adhere to the posted speed limits, use proper signaling and follow all other traffic laws.

The need for highway safety corridors especially in the identified areas near and on Fort Berthold is on the rise because of the alarming statistics of road accidents. The North Dakota Department of Transportation Highway Safety Division report shows that in North Dakota from 2019-2021 there have been 272 fatal car crashes. In the United States, nearly 40,000 people die every year in road accidents, and thousands more suffer from severe injuries. The economic cost of these accidents is also staggering, costing billions of dollars in medical bills, property damage, and lost wages.

The stories of close call collisions that have been shared with me include school buses being nearly impacted by oil field trucks that fail to stop at posted stop signs, emergency first responders forced to give way to large trucks on their way to calls that are life threatening, and other stories of families that have experienced dangerous situations while on the road.

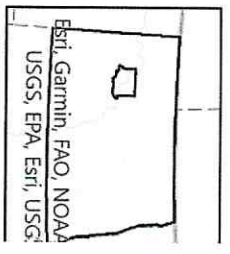
Highway safety corridors where oil field traffic is unavoidable are critical in addressing this problem. Currently, State highways 22, 73, 23, 1804, 8, and 37 are routes that are shared by residents that live on or near Fort Berthold and oilfield trucks creating a high risk for traffic collisions and fatalities.



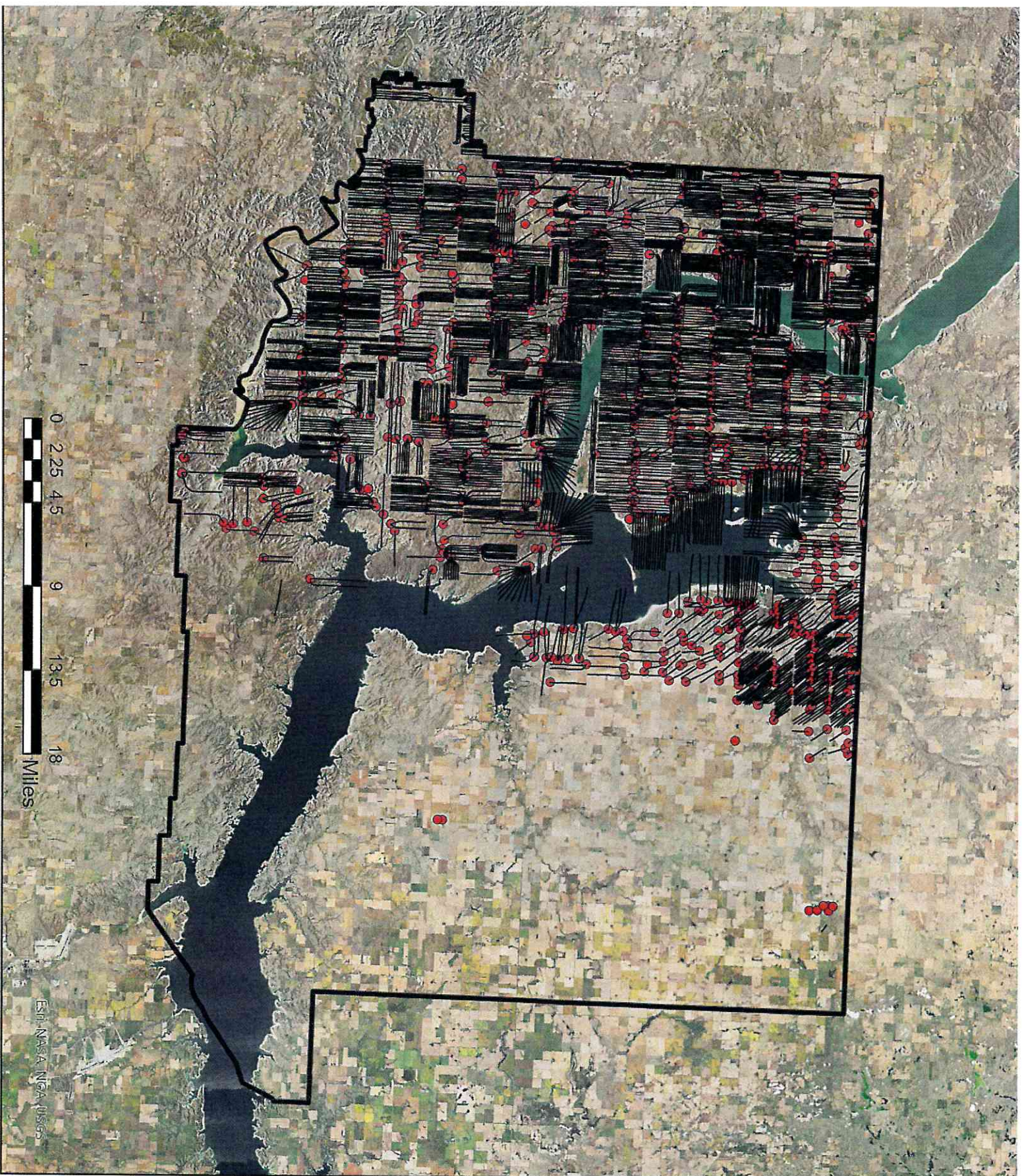
# Fort Berthold Oil and Gas Wells and Horizontals



- Oil and Gas Horizontals
- Oil and Gas Wells
- ▭ Reservation Boundary



This map (or data product) is for  
assessment and planning purposes only.  
It is not intended to be used for  
description, conveyance, authoritative  
definition of legal boundary,  
or property title. This is not a survey product.  
Users are encouraged to examine the  
documentation or metadata associated  
with the data on which this map is  
based for information related to its accuracy,  
currentness, and limitations.

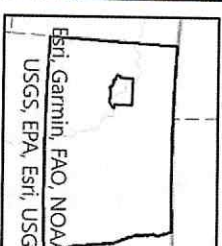




# Fort Berthold State, Federal BIA Roads



- BIA Roads
- Roads
- State/Federal Roads
- Reservation Boundary



This map (or data product) is for assessment and planning purposes only. It is not intended to be used for description, conveyance, authoritative definition of legal boundary, or property title. This is not a survey product. Users are encouraged to examine the documentation or metadata associated with the data on which this map is based for information related to its accuracy, currency, and limitations.

0 2.25 4.5 9 13.5 18 Miles

Esri, NASA, NOAA, USGS