



SB 2017
2023-25 Appropriation Request
North Dakota Game and Fish Department Potential Land Acquisitions

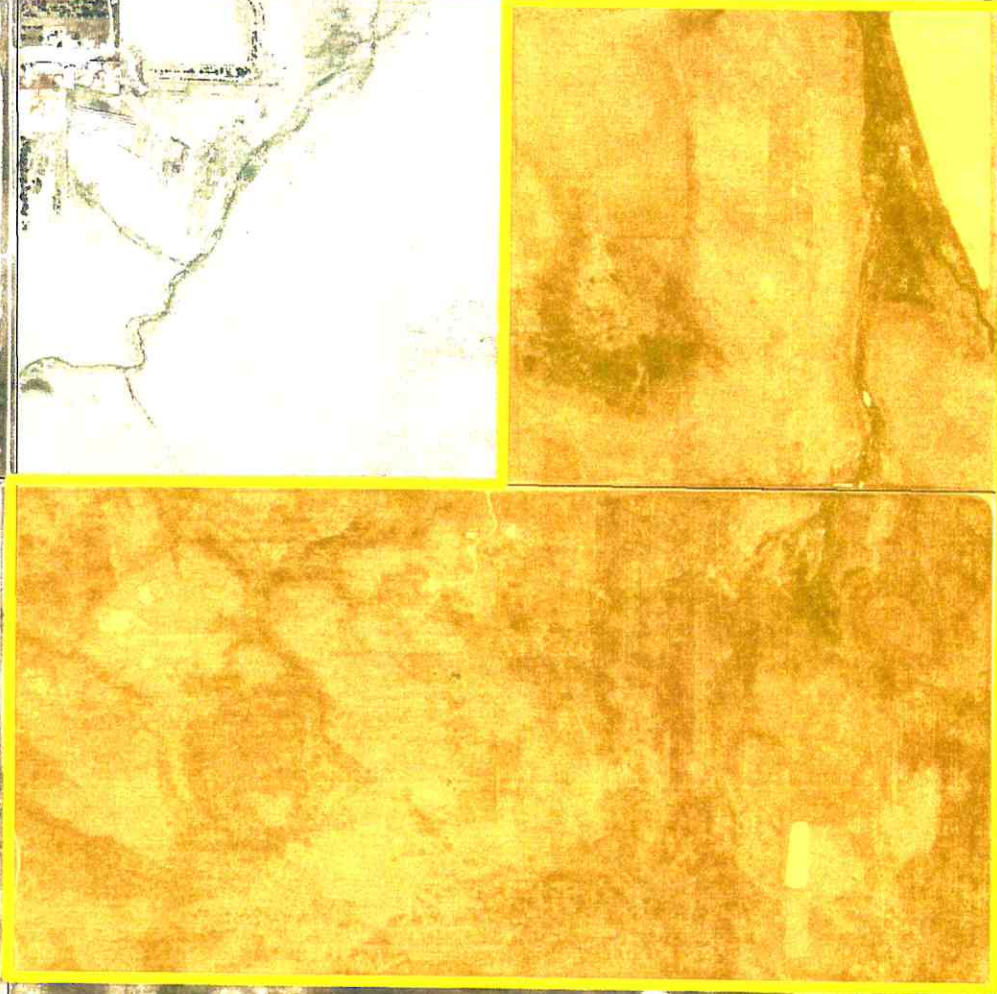
As of January 3, 2023

The Department has been contacted by individuals with the following tracts. They are interested in selling these tracts to the Department to be maintained as Wildlife Management Areas (WMA). Some opportunities may arise throughout the biennium that could get higher priority. The following list is in no particular order.

- 1) Adams County – 480 acres – Land is currently in CRP.
- 2) Burleigh County – 152 acres – Property is entirely wetlands.
- 3) Dunn County – 950 acres – Mostly Pastureland near Killdeer WMA.
- 4) Hettinger County – 80 acres – Land is currently in CRP.
- 5) Lamoure County – 160 acres – Primarily wetlands.
- 6) McLean County – 30 acres – Addition to the Coal Lake WMA for improved access.
- 7) McLean County – 160 acres – Mostly pastureland with native woodlands.
- 8) Pembina County – 360 – Dunklee WMA addition. Enrolled in NRCS Emergency Watershed Protection, so no agricultural practices are allowed.
- 9) Walsh County – 140 acre – Located along Red River and enrolled in NRCS Wetland Reserve Program, so no agricultural practices are allowed.
- 10) Williams County – 348 acres – Trenton WMA Addition (floodplain and access to WMA).

A map for each potential acquisition is included.

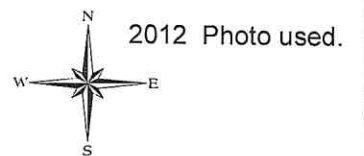
Adams County
480 acres



Map Features

 Offer

 NDGD PLOTS






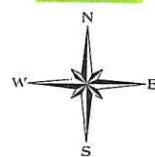
Anderson 2014

Burleigh County
152 Acres



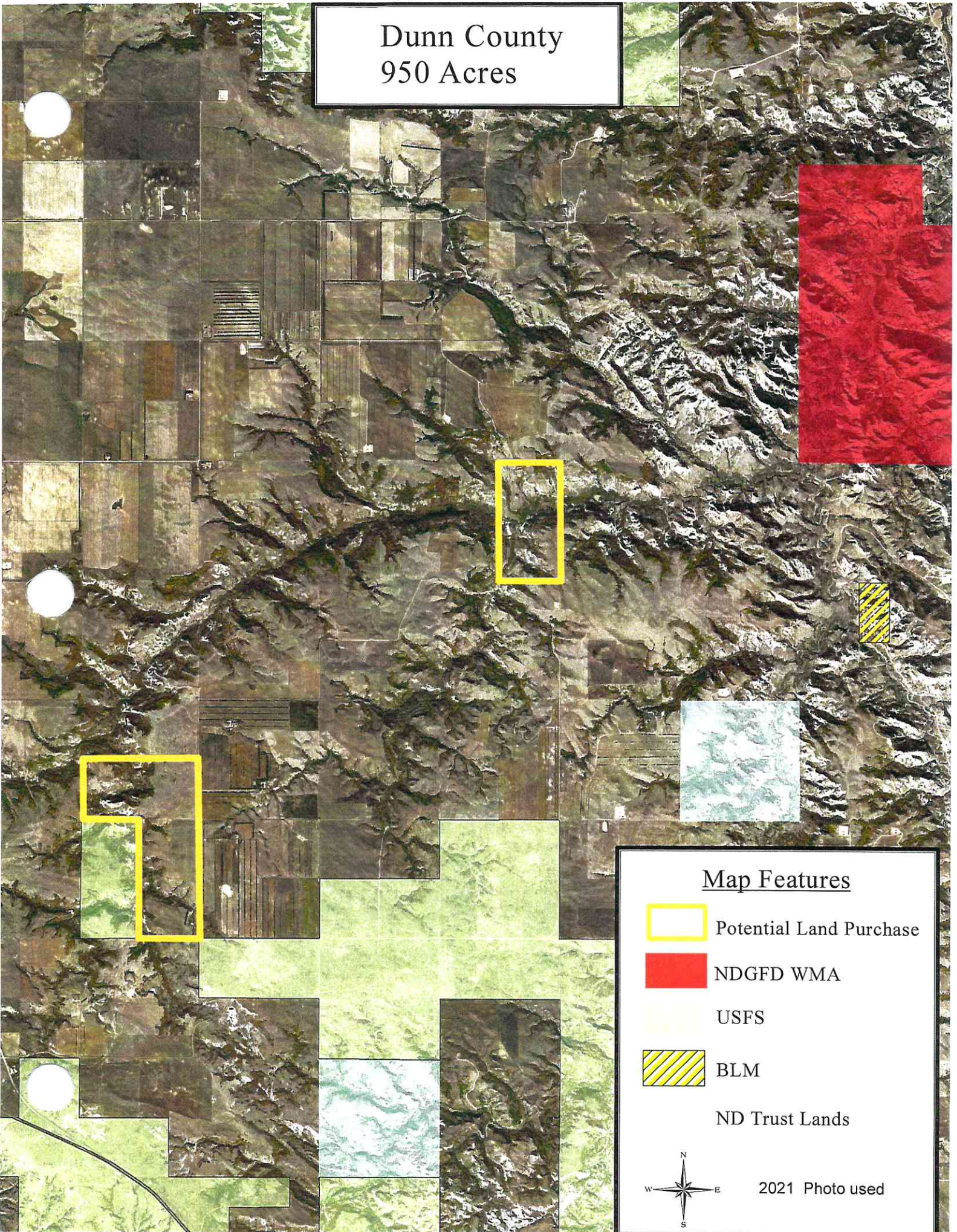
Map Features

-  Potential Land Purchase
-  NDGFD WMA
-  USFWS WPA




2021 Photo used

Dunn County 950 Acres




Map Features

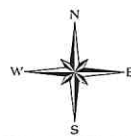
 Potential Land Purchase

 NDGFD WMA

 USFS

 BLM

 ND Trust Lands



2021 Photo used

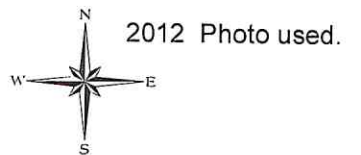
Hettinger County
80 acres



Map Features

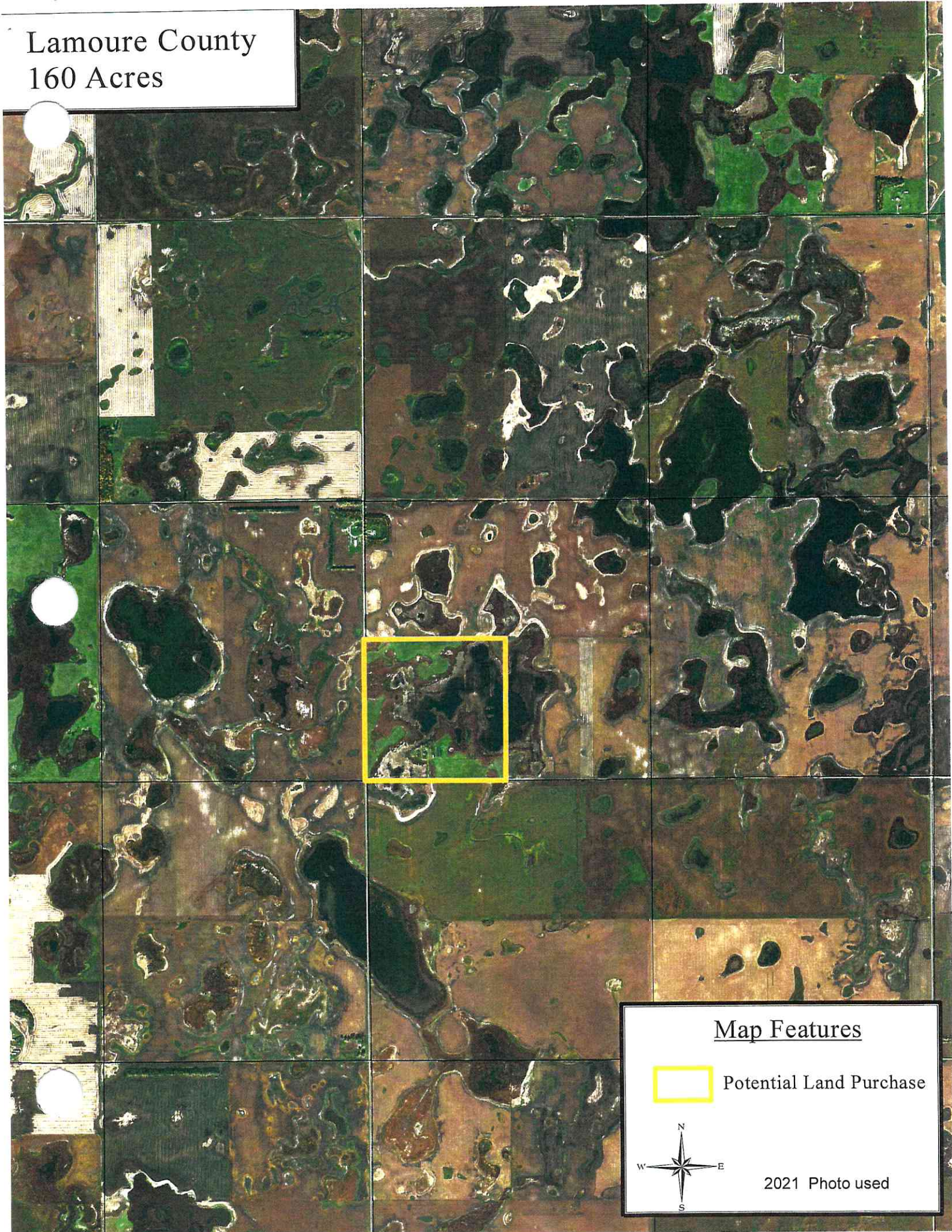
 Offer

 NDGD PLOTS



Anderson 2014

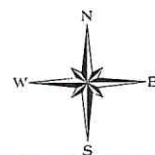
Lamoure County
160 Acres



Map Features

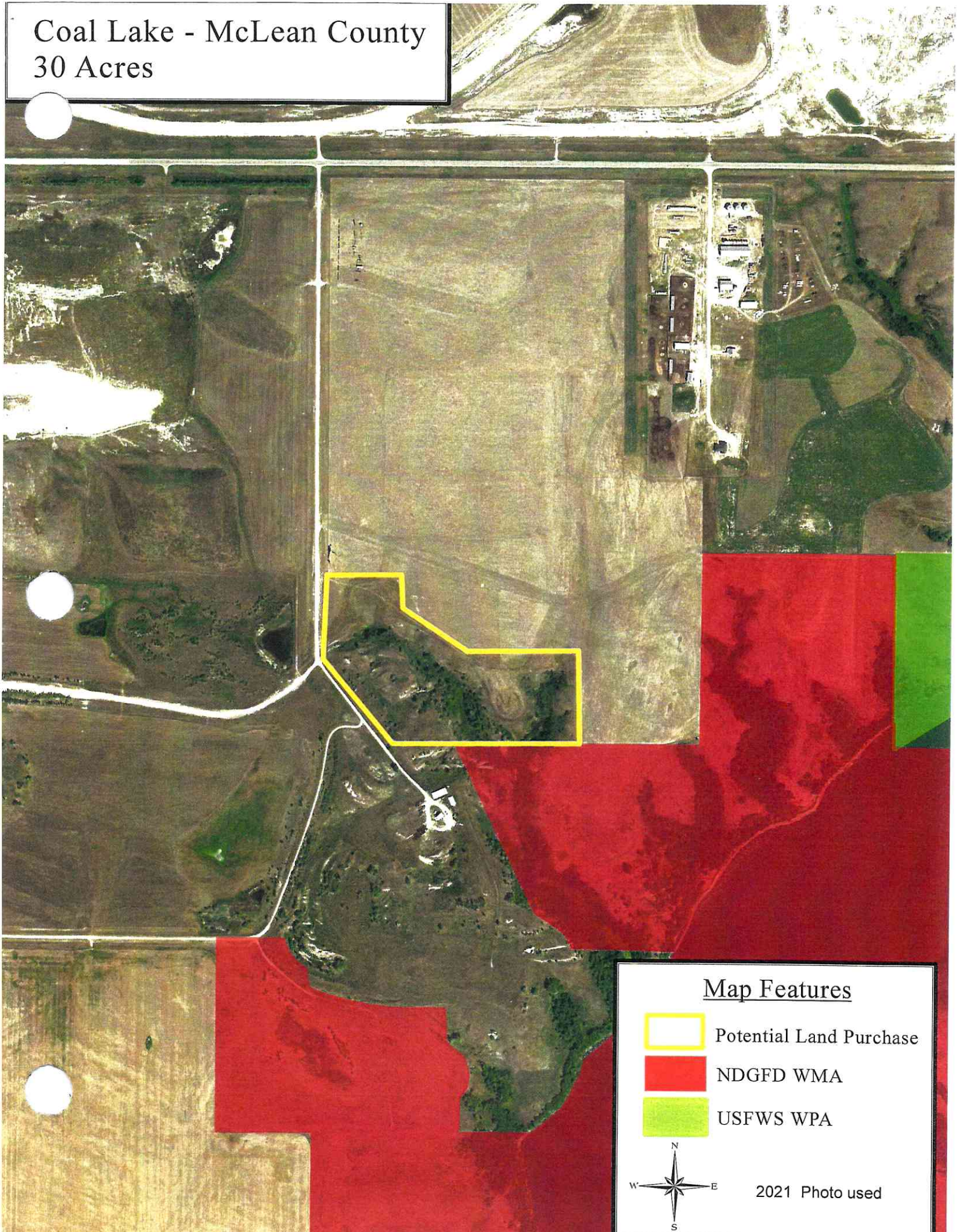


Potential Land Purchase






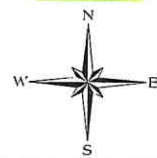
2021 Photo used

Coal Lake - McLean County
30 Acres



Map Features

-  Potential Land Purchase
-  NDGFD WMA
-  USFWS WPA



2021 Photo used

McLean County Potential Acquisition Approximately 160 acres

Butte, ND

Map Features

-  Potential Acq.
-  USFWS WPA



2014 Photo used.


Duncklee WMA Addition
360 acres



Map Features

 Offer

 NDGFD WMA

 2012 Photo used.

Anderson 2014

Walsh County 140 acre

Red River

Map Features

Offer

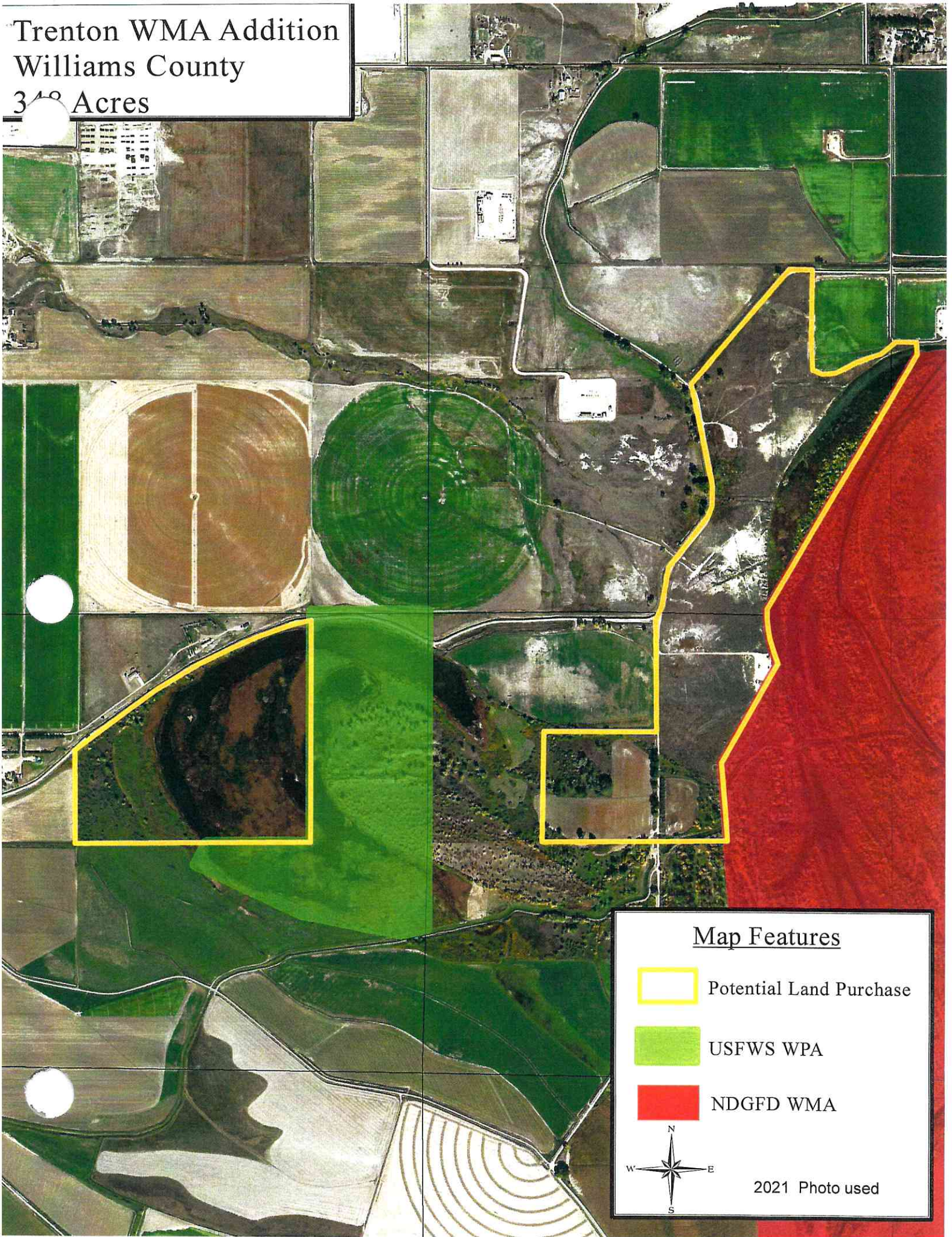
NDGD PLOTS

2012 Photo used.




Anderson 2014

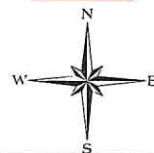
USDA-FSA

Trenton WMA Addition
Williams County
348 Acres



Map Features

-  Potential Land Purchase
-  USFWS WPA
-  NDGFD WMA



2021 Photo used