



SENATE APPROPRIATIONS COMMITTEE

January 5, 2023

NORTH
Dakota
Be Legendary.™

| Parks & Recreation



Purpose

Empower People • Improve Lives • Inspire Success

Mission Statement

Enrich generations through experiences that connect people and places

Values

Curiosity • Courage • Collaboration • Communication • Conservation

THE WHY

\$1.4 Billion

Total outdoor recreation
value added in
2021 to ND

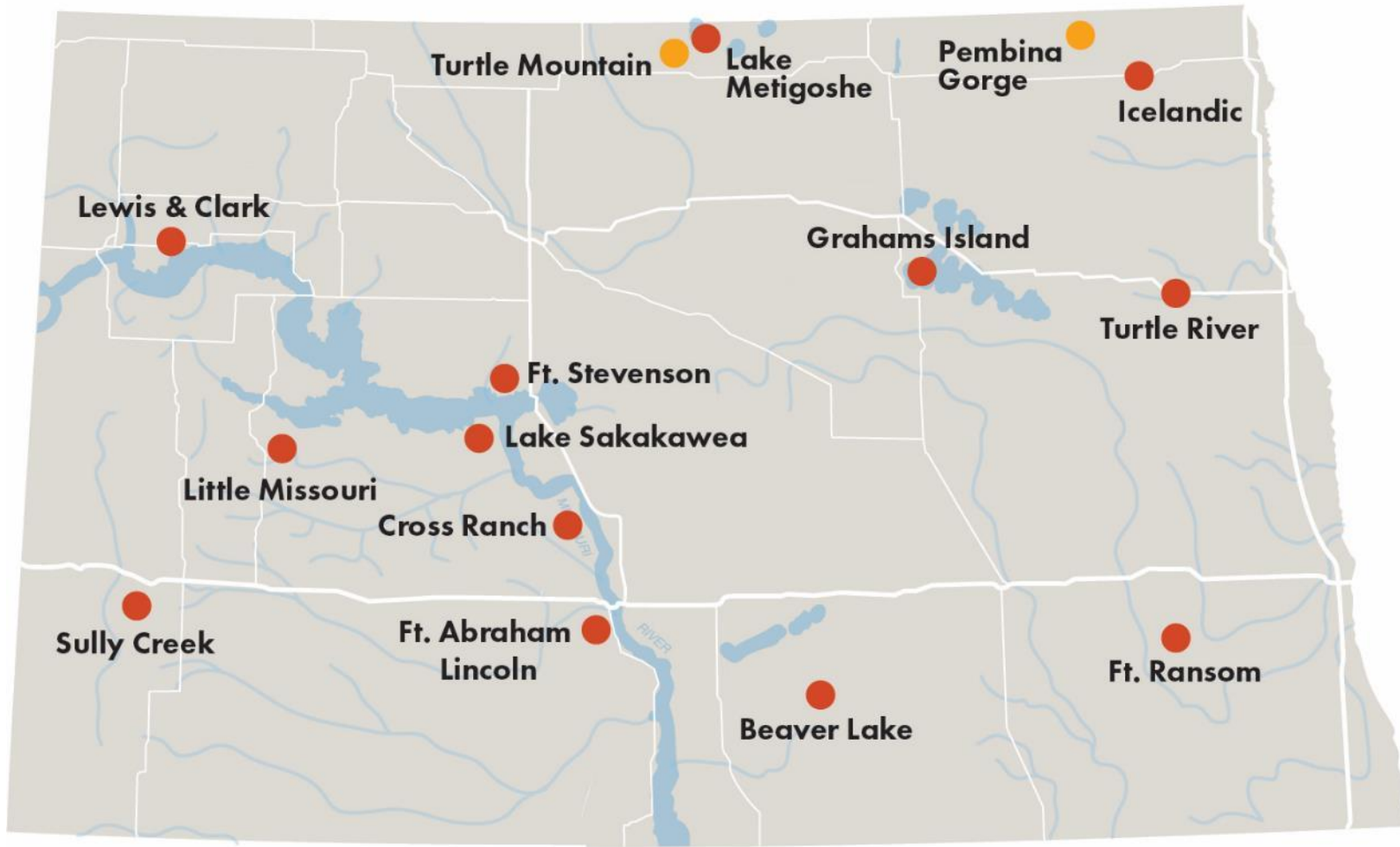
\$154 Million

Contributed to ND's
economy in 2020 and
1,850 jobs supported

93%

of U.S. adults say their
mental health is
improved by parks and
recreation services





● ND State Park

● ND State Recreation Area

OPERATIONS

- 21,287 acres managed
- 15 Destination properties (4 Corp/Bureau properties)
- 1.1 million visitors in 2022
- 88,777 camping nights in 2022
- 4.1% decrease from 2021
- 57.75 full time staff
- 21 year-round temp staff
- 244 seasonal staff



INFRASTRUCTURE

- 1,353 Campsites
- 331 Buildings
- 56 Overnight Rental Accommodations
- 16 Rental Meeting Spaces
- 205 Miles of Multi-Use Trails
- 238 Marina Slips
- 125 Restroom Facilities
- 1,700 Picnic Tables
- 130 Miles of Roadway
- 14 Concession Stores

Recreation Activities



- Hiking
- Biking
- Camping
- Fishing
- Swimming
- Beaches
- Horseback Riding
- Geocaching
- Marinas
- Museums
- Historical Tours
- Snowshoeing
- Sledding
- Ice Skating
- Ice fishing
- Dog Parks
- OHV Trails
- Snowmobiling
- Campfires

Equipment Rentals



- Aqua Pads
- Bicycles
- Canoes
- Kayaks
- Motorized Boats
- Paddle Boards
- Cross Country Skis
- Snowshoes
- Kick Sleds
- Fat Tire Bikes

Educational Services



- Campfire Series
- Local Programming
- Field Trips
- Amphitheater Programming
- Statewide Programming
- Special Events

SPECIAL EVENTS

Wild Outdoor Women
Lake Metigoshe State Park



Flannel Fest
Lewis & Clark State Park

Sodbuster Days
Fort Ransom State Park



Haunted Fort
Fort Abraham Lincoln State Park

MOTORIZED RECREATION

Snowmobile

- 9,629 Registered Snowmobiles (as of 11/30/2022)
- Partnerships/Stakeholders
- 2,800 miles of authorized trails



Off-Highway Vehicle (OHV)

- 46,105 Registered Off-Highway Vehicles (as of 11/30/2022)
- 47.5 miles of designated trails

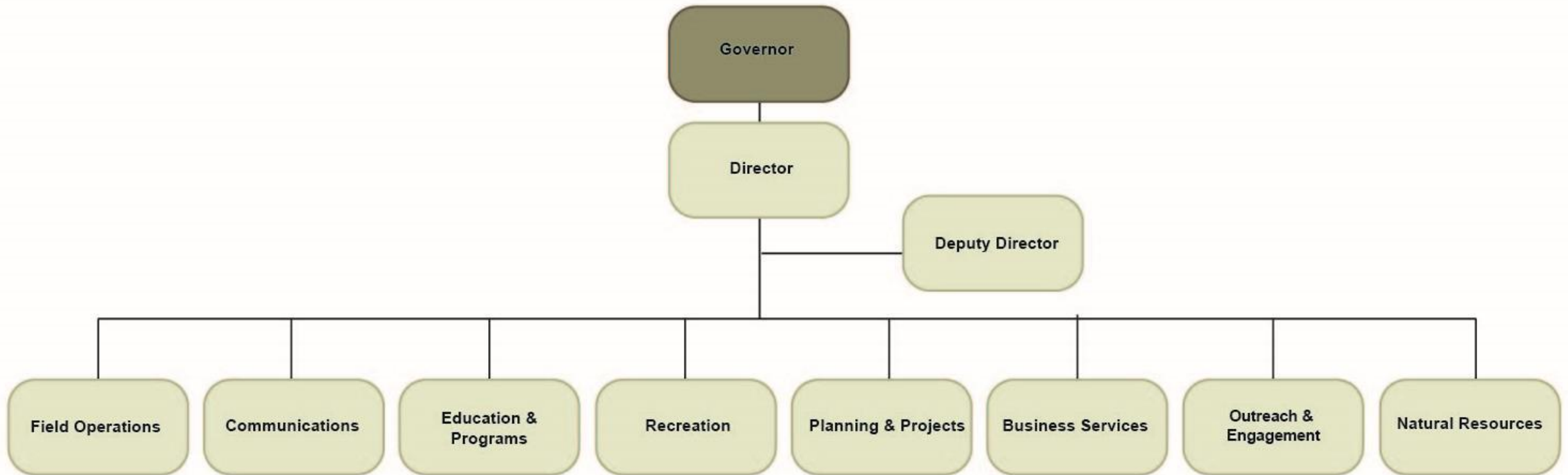


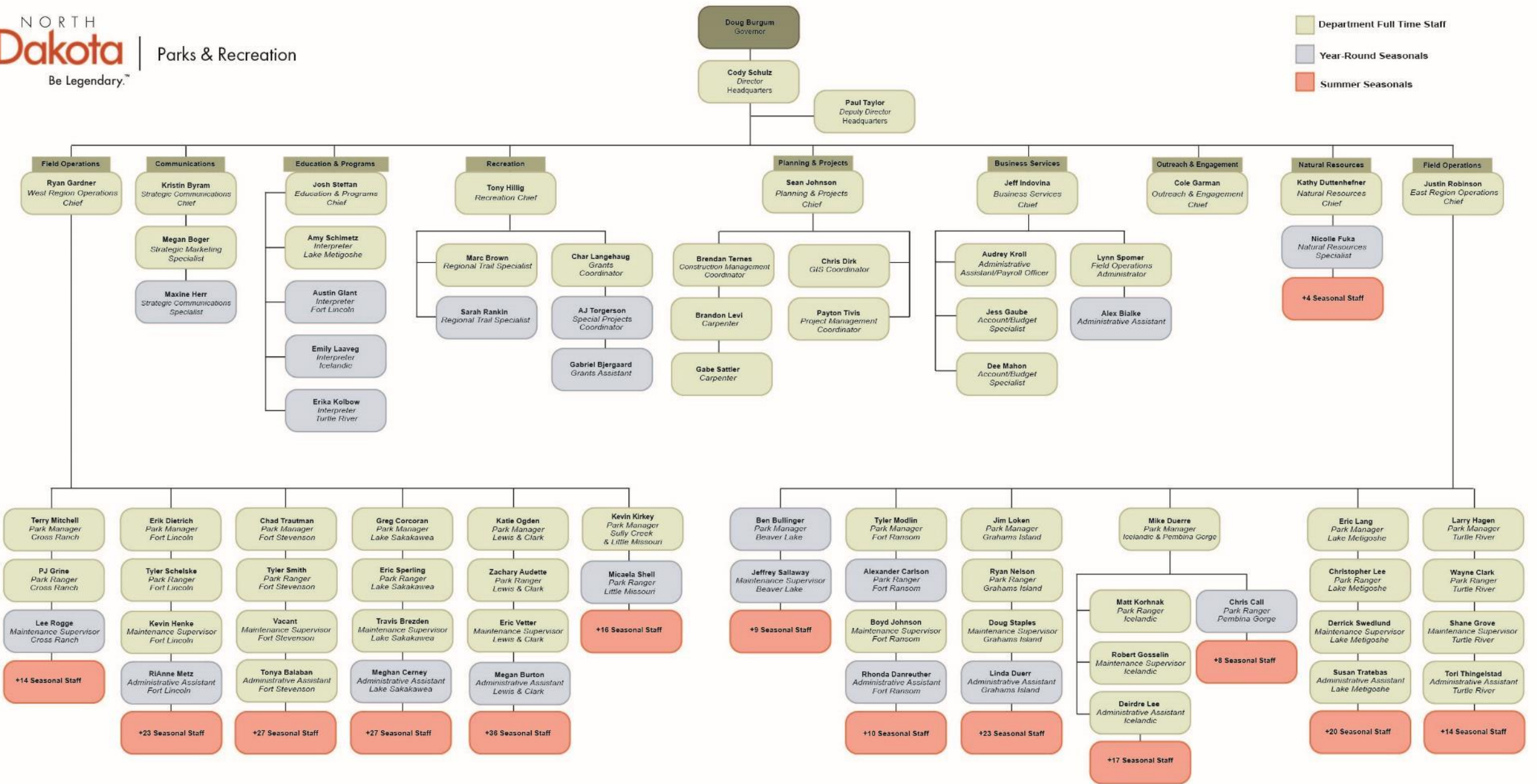
Youth Safety Outreach

- 602 Safety Certifications issued
- Youth Helmet Program



ORGANIZATIONAL STRUCTURE





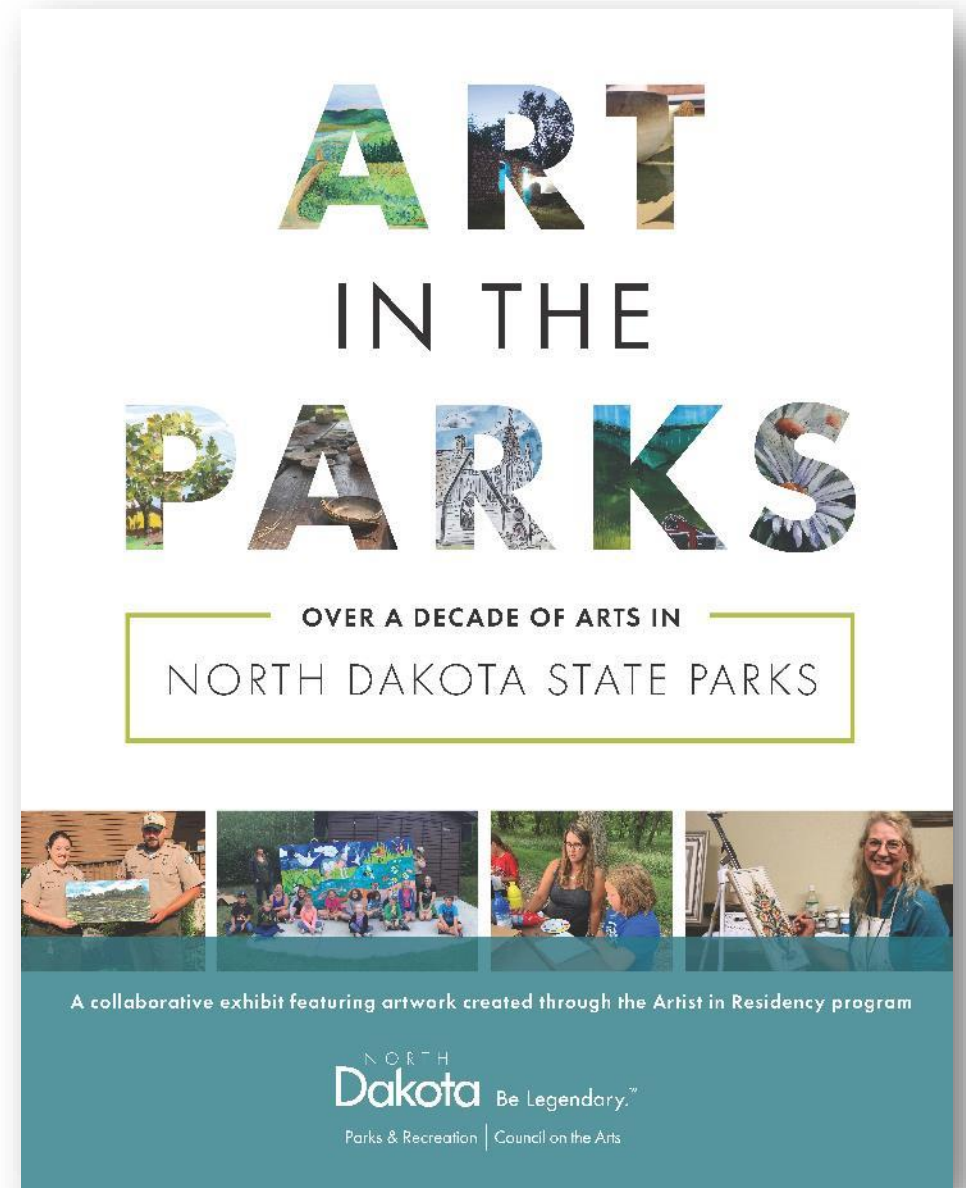
ACCOMPLISHMENTS

Curiosity:

- **Secured Alternative Funding**
 - Transportation Alternative Grant
 - ND Historic Preservation Grant
- **Launched Snowmobile App**
- **Artist in Residency Program**
 - Traveling Art Exhibition

Courage:

- **Innovative solutions**
 - Solar panels
 - Groomer snorkel
- **Spring/Winter Emergency Response**



ACCOMPLISHMENTS

Collaboration:

- **DPI Partnership**
 - Field Trips & Day Camps
- **Park District Facility Renovation Grant**
 - \$5 million passed through to communities
- **Tribal Relations**
 - Turtle Mountain Band of Chippewa Splash Pad Grant
 - Mandan, Hidatsa and Arikara Nation Crow Flies High
- **Safety & Enforcement Partnership**



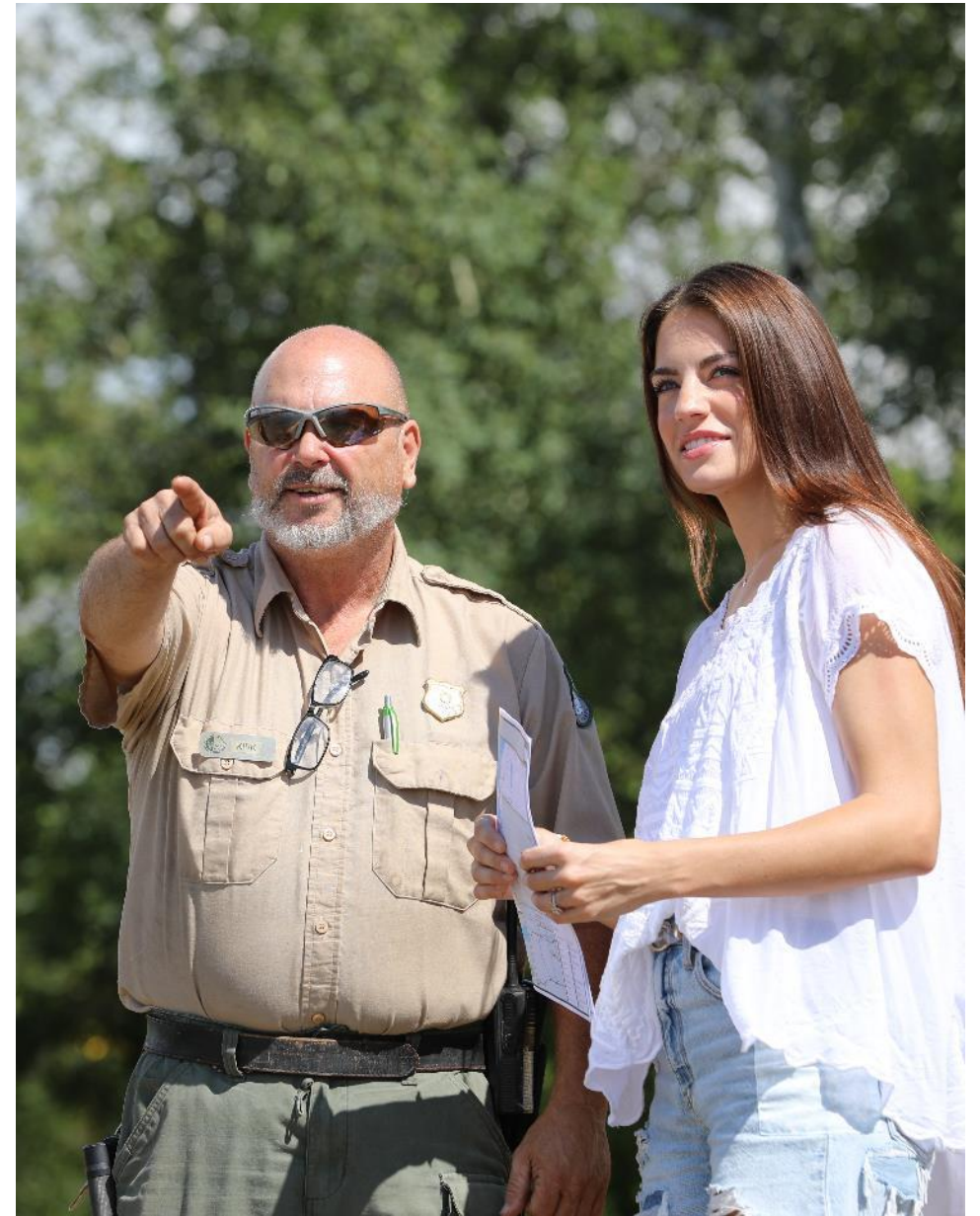
ACCOMPLISHMENTS

Communication:

- Expanded communications
- Technology
 - Video
- Outreach & Engagement Division

Conservation:

- SCORP & Agency Survey
- Endangered species (notes on orchid)
- LMSP 85th Anniversary



CHALLENGES

Staffing:

- Recruiting of seasonal staff
- Retention of year-round staff

Weather:

- Late spring blizzard
- Spring flooding in eastern ND
- Early winter statewide
- Low water levels on Lake Sakakawea

Infrastructure

Procurement process for public improvements



**Deferred
Maintenance Video**
Scan to watch



OPPORTUNITIES

Creative Funding Solutions

Technology

- Hardware (locks)
- Software (reservation system)

Mobile staffing & amenities

- Roaming ranger
- Traveling concession trailer

Last Mile Initiative

- Partnering with gateway communities

Shift in recreational demand

- RV size and utilities
- Year-round facilities



BUDGET RECOMMENDATIONS



	Current Biennium	Requested
Park Cabins	\$0	\$9,515,116 to build cabins at parks to include 2 FTEs in second year of biennium for upkeep of cabins
Deferred Maintenance	\$17,900,000 for deferred maintenance and capital projects	\$10,000,000 for deferred maintenance and capital projects
Full-time Employees	57.75 FTE	66 FTE (convert 6 year-round temps, one 0.75 FTE to full-time employee, and 2 FTE employees for cabins second year of biennium)
Pembina Gorge Campground Construction	\$234,189 for 95% complete plans	\$8,000,000 to build roadways, service the site, fully serviced cabins (6) and campsites (30+), maintenance shop/seasonal housing



DRAFT

PEMBINA GORGE CAMPGROUND

95% Drawings

BUDGET RECOMMENDATIONS (CONTINUED)



	Current Biennium	Requested
<p>State Park Matching Grant Program</p>	<p>\$1,632,800 (\$816,400 appropriated with \$816,400 from non-state government sources as a match)</p>	<p>\$3,000,000 (\$1,500,000 appropriation with \$1,500,000 from non-state government sources as match)</p>
<p>City, County & Tribal Park System Grants</p>	<p>\$5,000,000 total grant All money was awarded to park districts per legislation.</p>	<p>\$6,000,000 total grant Open the application to a wider group of recipients to include city, county and tribal park systems.</p>

GRANT HIGHLIGHTS

0 – 15,000 population

- **Manvel Park District:**

Jason Stadstad Facility Upgrade – insulation, exterior doors, accessible bathroom (completed)

- **Landa Park District**

City Park Renovations – Replace benches, grills and picnic shelter

Over 15,000 population

- **Bismarck Parks & Recreation District:**

Municipal Ball Park – scoreboard & parking lot lighting

- **Williston Parks & Recreation District:**

Davidson Park irrigation system (Complete)

- **Fargo Park District:**

Park District trail concrete project






Raging Rivers Waterpark

Mandan, ND

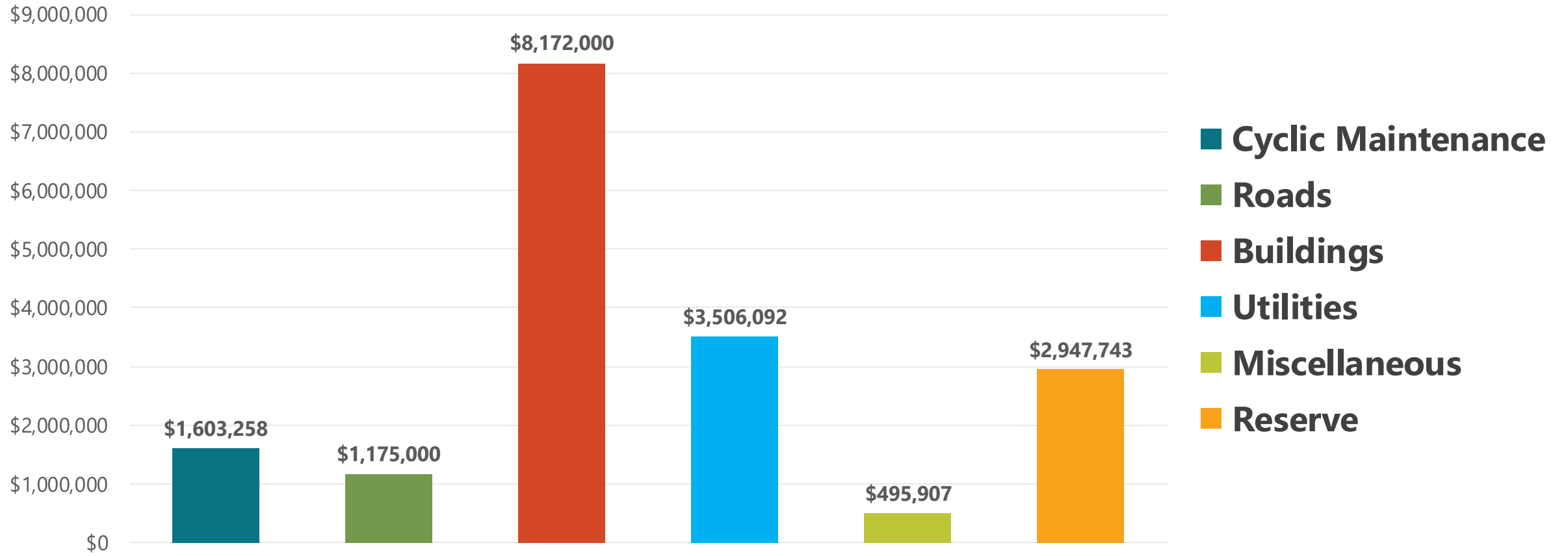
Lazy river, pool and concessions upgrade and renovation

BUDGET RECOMMENDATIONS (CONTINUED)

	Current Biennium	Requested
 <p data-bbox="517 458 1021 568">Increase Special Fund Spending Authority</p>	<p data-bbox="1200 486 1480 534">\$17,332,784</p>	<p data-bbox="1786 458 2283 562">\$19,082,784 (increase of \$1,750,000)</p>
 <p data-bbox="583 736 958 846">Lake Metigoshe Reimagined</p>	<p data-bbox="1309 736 1370 783">\$0</p>	<p data-bbox="1926 636 2142 684">\$750,000</p> <p data-bbox="1671 698 2397 891">to develop a layout that maximizes the visitor experience and amenities and improves park staff efficiencies in maintaining the park.</p>
 <p data-bbox="519 1039 1019 1149">Equipment Life Cycle Replacement</p>	<p data-bbox="1309 1039 1370 1086">\$0</p>	<p data-bbox="1926 968 2142 1015">\$858,700</p> <p data-bbox="1633 1029 2435 1165">to replace equipment that is obsolete and/or at the end of its useful life cycle and improve efficiencies within the parks.</p>

AMERICAN RESCUE PLAN ACT (ARPA)

ARPA Dollars by Project Type

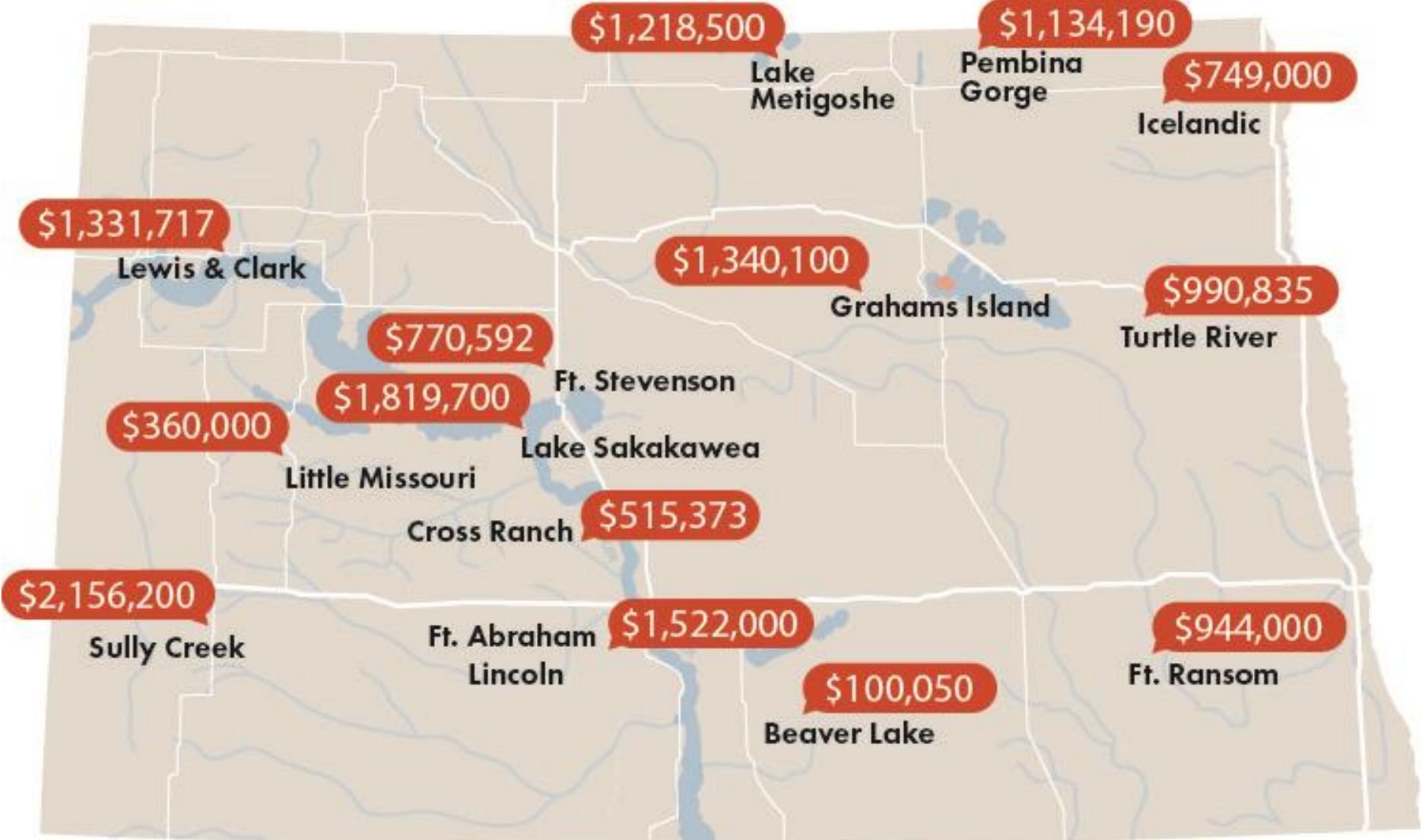


ARPA FUNDING

Estimated Completion of ARPA Projects by Year



ARPA DOLLAR COMMITMENT BY PARK



ENHANCE THE LIVES OF OUR CITIZENS ALL YEAR LONG



ECONOMIC

- Attracts businesses & workforce
- Increases property values
- Attracts visitors



HEALTH

- Improves well-being
- Reduces health care costs
- Provides active transportation



ENVIRONMENT

- Connects citizens with nature
- Provides habitat for wildlife
- Improves air & water quality



COMMUNITY

- Creates sense of place
- Increases social connections
- Offers safe and accessible spaces



QUESTIONS?



NORTH
Dakota
Be Legendary.™

| Parks & Recreation