

NORTH DAKOTA PROGRESS REPORT

Ratings

Oct

98%
rated it as
Excellent, Very
Good, or Good

99% At-Risk Elementary
97% At-Risk Middle
98% At-Risk High

96%

said it was based
on scenarios
relevant to their
experience

98% At-Risk Elementary
96% At-Risk Middle
95% At-Risk High

93%

would
recommend
it to others

95% At-Risk Elementary
93% At-Risk Middle
90% At-Risk High

Quotes

Q. What did you like best about the training?

A. "I liked that I was leading the conversation, so that it felt like I was practicing hands on for a situation that could realistically happen in my classroom or with a parent."

A. "The interactive simulation that you had to choose the best response and if it wasn't correct you were alerted on what you should have done or why it was incorrect."

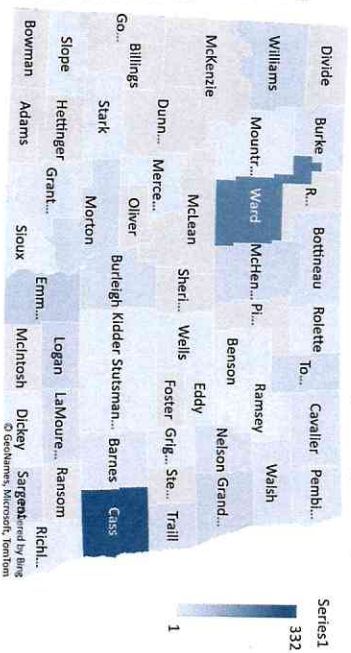
A. "I liked the scenarios where I had to think about how I should respond in a situation."

Usage & Staff Activity

1113

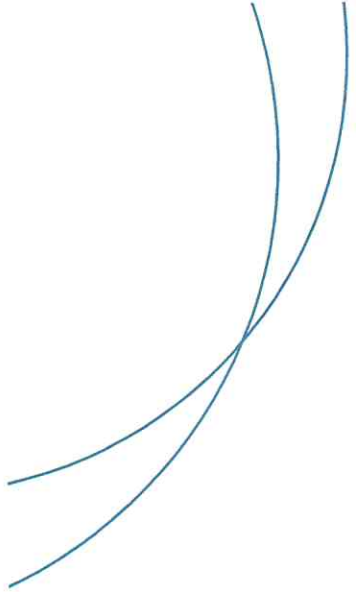
Total Activations to Date

Total Completions & In Progress by County



Top 5 Districts (Completions & In Progress)

1. FARGO 1	18.96%
2. WEST FARGO 6	9.97%
3. NEDROSE 4	4.22%
4. UNITED 7	3.86%
5. LEWIS AND CLARK 161	3.50%



Total Number of Completions

737

- At-Risk for Elementary School Educators ... 396
- At-Risk for Middle School Educators 136
- At-Risk for High School Educators 205

Total Number in Progress

376

- At-Risk for Elementary School Educators ... 201
- At-Risk for Middle School Educators 59
- At-Risk for High School Educators 116

SEU(16)/REA(14) in Progress/Completed

30

- At-Risk for Elementary School Educators ... 12/6
- At-Risk for Middle School Educators 2/3
- At-Risk for High School Educators 2/5

\$300,000 total - already part of budget