

Transit/Trolley System

A potential transit system was discussed and commented on at length through the development of this study. As shown in Figure 36 below a transit route plan could include connecting the downtown area to other venues such as the Library and Amphitheater. This routing would run on 15-minute headways and focus on serving the tourist interests during the summer season only. This system would need to be owned, operated, and maintained by a transit provider or local interests. Area service providers expressed interest in this possibility after initial contact was made by the NDDOT as part of this study. Similar transit systems in other North Dakota communities have proven successful in promoting community accessibility and cohesion. Examples of the size/type of trolley vehicles that could be employed are shown below in Figure 37. These vehicles could provide for open air, hop on/off type function as well as disabled patron facilities. They could also be painted and themed on the exterior to blend into the western/historic motif in Medora, which was commented on as important to the public.

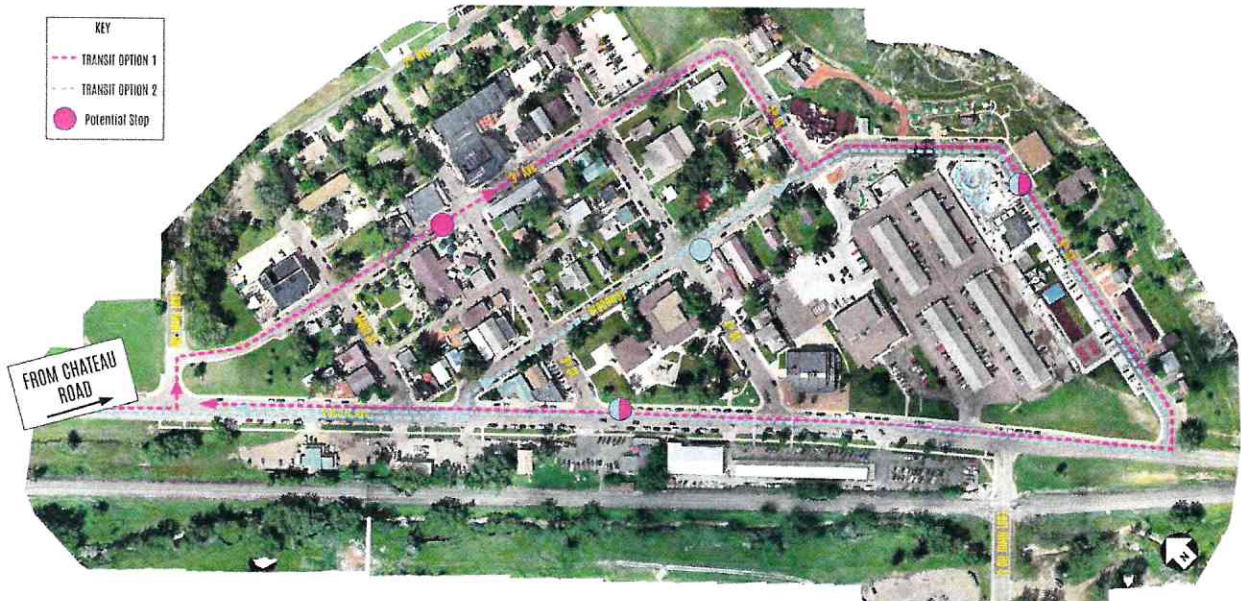


Figure 36: Potential transit routing in the downtown area

As part of the final public input meeting a second route option that would expand service to the south of the downtown area was also discussed. This option and the related stop locations was not drawn or illustrated. This option would require additional stops and extend headways beyond the 15-minute planned for the downtown only route.



Figure 37: Potential Trolley Vehicle/Style

Public Input and Preferences

Figure 38 below shows stakeholder preferences, based upon comment forms in Public Input Meeting #2 on October 2, 2022. The completed PI Report is included in Appendix F.

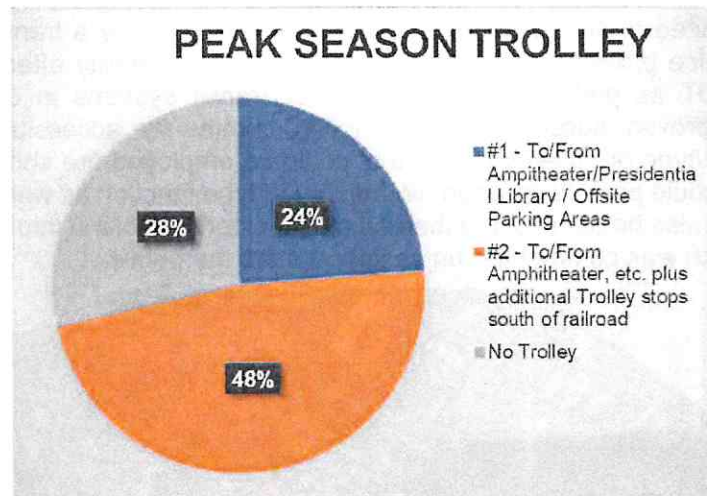


Figure 38: PI Meeting #2, Potential Trolley Service (Peak Season) Comment Breakdown

E. Comparison of Concepts

The following information in Table 13 details the advantages and disadvantages of each concept evaluated for Pacific Avenue.

Table 13: Comparison of Alternatives – Pacific Avenue Improvements

Alternatives	Advantages	Disadvantages
Concept 1 – Roundabouts and 2 Lanes, Bulbouts, Raised Median with Flex Trolley Lane	<ul style="list-style-type: none"> Enhanced downtown accessibility and efficiency Raised median with pedestrian cut-throughs allows for safer/shorter crossings Provides dedicated travel lane for trolley traffic 	<ul style="list-style-type: none"> Removal of on-street parking during peak season Increased construction cost
Concept 2 – Roundabouts with 3 lanes, Bulb-Outs and Sharrows	<ul style="list-style-type: none"> Utilizes existing roadway features Less impact to existing on-street parking Lower construction cost 	<ul style="list-style-type: none"> Does not meet LOS standards without a future raised median Limited improvements for pedestrians Travel lanes to be shared by vehicular, bicycle, and trolley traffic No aesthetic improvements for roadway

TRANSIT/TROLLEY FEASIBILITY MEDORA

Dedicated Lane versus In-lane

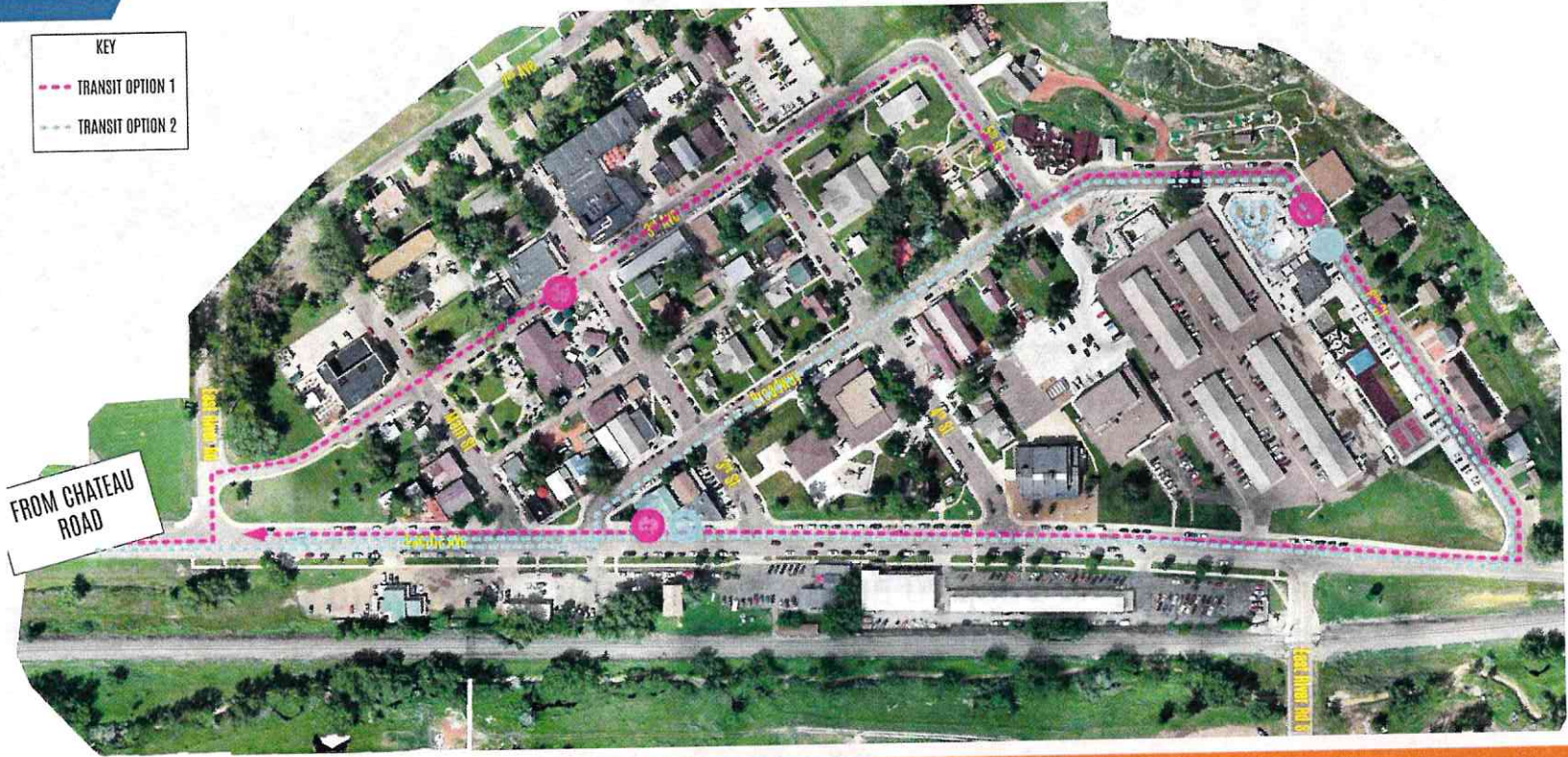
- In-lane transit retains existing parking on Pacific Avenue
- Anticipated 15 minute headway/intervals are feasible.
 - Based upon time trials completed last summer the week of July 4th.



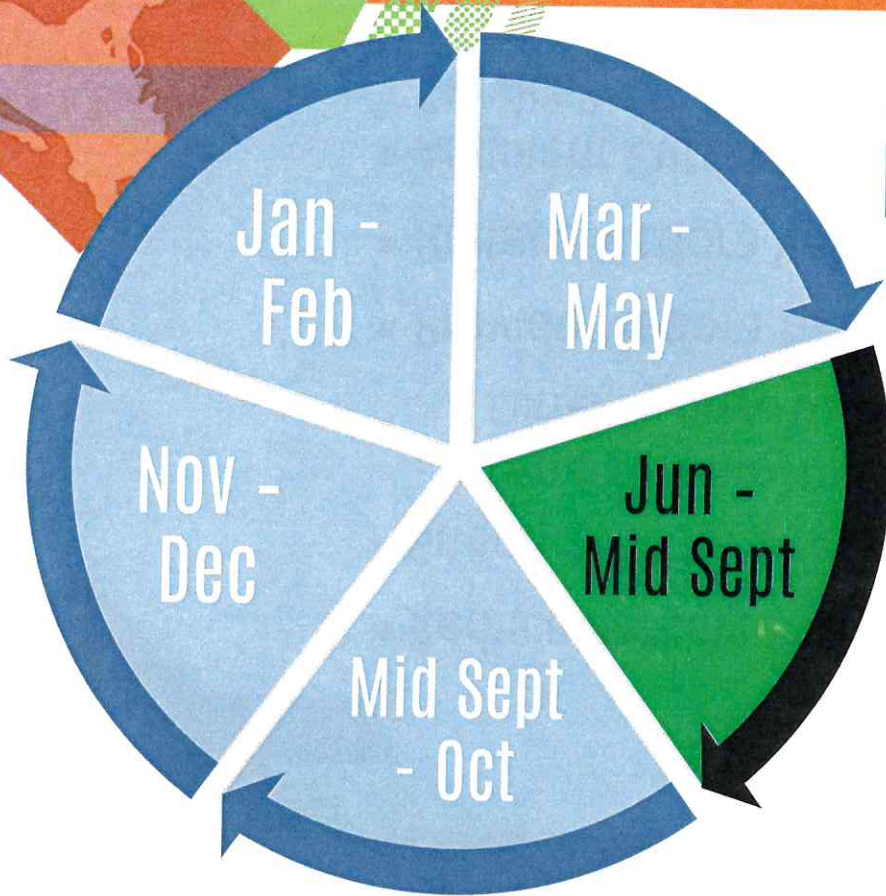
CONCEPT - TRANSIT ROUTE MAP MEDORA

KEY

- TRANSIT OPTION 1
- TRANSIT OPTION 2

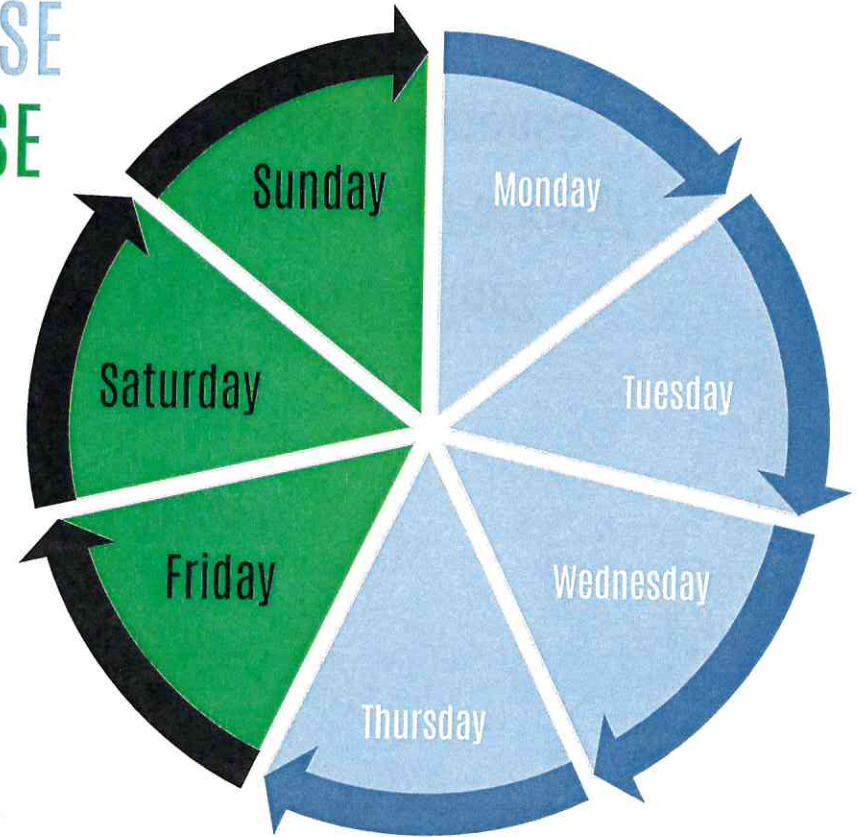


POTENTIAL TROLLEY OPERATIONAL TIMING



NO USE
IN USE

Limit to Summer Season?



Limit Days?



UNDERLYING PURPOSE OF SERVICE? MORA

- Reduce Parking Congestion?
- Support Medora Venue-to-Venue Travel?
 - Currently Walk Trips
 - Currently Drive Trips
- Provide Medora to Amphitheater Option to Driving?
- Reduce Medora Vehicle Circulation Looking for Parking?
- Augment Current Limited Resident Demand Response Service?

Presented By:



WALK TIMES BETWEEN VENUES MEDORA

Start	End	Distance	Time
1	5	0.4 mi	8 min
3	6	0.3 mi	5 min
4	7	0.3 mi	6 min
2	1	0.1 mi	3 min
1	8	0.1 mi	3 min
1	9	0.2 mi	4 min



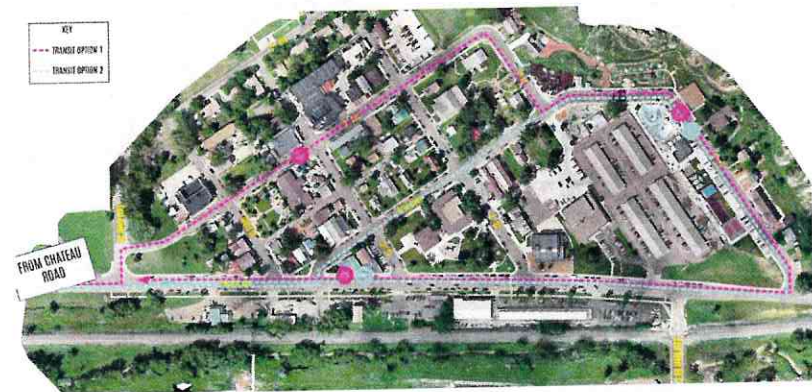
Presented By:



OPERATING ALTERNATIVES

MEDORA

- Options:
 - Local: Either Public or Private Non-Profit
 - “Public” Transit: Including Funding from NDDOT/FTA
- Considerations:
 - Each Needs a Champion – Is there One?
 - If FTA Funding: ADA Vehicle and Stop Requirements Expand
 - If FTA Funding: Fixed Route Service Requires Complementary Paratransit with $\frac{3}{4}$ Mile Service Area around Route



Presented By:





OPERATING ALTERNATIVES

MEDORA

- Options:
 - Local: Either Public or Private Non-Profit
 - “Public” Transit: Including Funding from NDDOT/FTA
- Considerations:
 - FTA Funding is through Formula – Adding New Provider does not Necessarily Bring More Funding to State – Slice Pie Thinner
 - Is there a NON-RECREATION Travel Need Not being Met?

Presented By:



CivilScience



SERVICE COSTS

MEDORA

- **Seasonal Operations Influences Cost:**
 - Mobilization
 - Vehicle Utilization in Off Months
 - Driver Availability
 - Service and Storage Availability
- **Turnkey Seasonal Operator:**
 - \$120/Hour/Per Vehicle
 - 2 Vehicles in Service
 - 10 Hours/Day
 - 6 Days a Week
 - 100 Day a Season
 - \$240-\$250,000 for Season

Is there Potential for
Funding Support from
Non-DOT State
Departments:

- Tourism
- Economic
Development

Presented By:



Presentation title

VEHICLE OPTIONS COMPARISON MEDORA

Customized 15-Passenger Van

Capital Cost	→	\$75-85,000
Useful Life	→	7 Years
CDL Required	→	NO
Capacity	→	Up to 15 Pass.

Customized Med/Heavy Duty Bus

Capital Cost	\$300 to \$450,000
Useful Life	12-14 Years
CDL Required	YES
Capacity	30-35 Pass.

Presented By:



Mainstreet



*Turn of
the century
charm.*



- Nostalgic Charm
 - Modern Day Technology
 - Hand-crafted, high quality materials
 - Proven increased ridership
 - Heavy duty, high-floor perfect for transit
- \$250,000 - \$350,000**

STANDARD EQUIPMENT

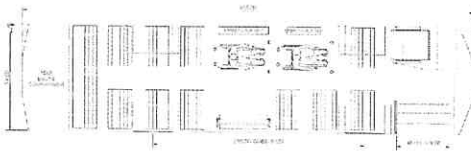
- ELECTRIC ENTRY DOOR
- TRANSIT FLOORING
- ARCH TOP TINTED WINDOWS
- 120,000 BTU HVAC SYSTEM
- INTERIOR LED LIGHTING
- CALIFORNIA STYLE MIRRORS
- CD PLAYER, FM
- VINTAGE OAK SLAT SEATING
- 4 SPEAKERS
- MASTER BATTERY SHUT OFF
- FIRST AID KIT, FIRE EXT, FLARE
- 2-TONE PAINT
- PIN STRIPE PACKAGE
- FRONT/REAR TOW HOOKS
- UNDERCOATING
- ROLL-OUT BATTERY TRAY
- DOT LED LIGHTING EXTERIOR
- SUN VISOR
- REAR VIEW MIRROR
- MECHANICAL DRIVER'S SEAT
- STAINLESS STEEL RAILING
- 2 EGRESS PER SIDE
- BACKUP ALARM
- SEAMLESS FIBERGLASS ROOF
- ALL LABELS & SIGNAGE
- CENTER HEADLIGHT

715.301.0149

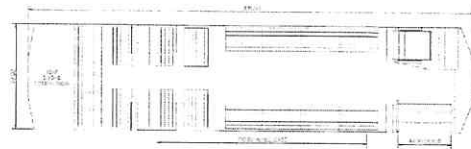
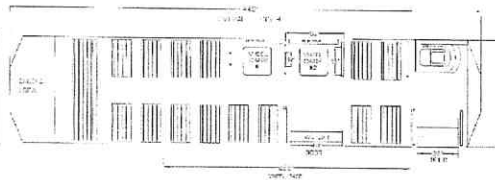
HOMETOWNTROLLEY.COM

190 WHEELBASE 24-32 PASS.

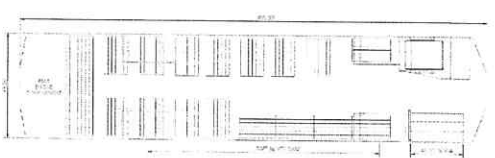
228 WHEELBASE 32-40 PASS.



ADA



NO ADA



MAINSTREET	30'	35'	40'	OPTIONAL UPGRADES
GVWR	29,000	32,000	32,000	HVAC
Body Width	99"	99"	99"	• MCC RMA Ducted HVAC
Body Height	136" +/-	136" +/-	136" +/-	SEATING
Int. Height	80.5	80.5	80.5	• Perimeter, forward or combination
Wheelbase	160"	208"	228"	• Complete range of padded/vandal resistant transit seating
Approach Angle	90°	90°	90°	• Recaro or USSC driver's seat
Breakover Angle	15.6°	15.6°	15.6°	WINDOWS, DOORS
Departure Angle	10.1°	10.1°	10.1°	• Transit Window
Step Height	14"	14"	14"	• Vapor Doors
Step Height Rear	14.5"	14.5"	14.5"	• Wide instep door
ADA Location	Mid/Rear/Entrance	Mid/Rear/Entrance	Mid/Rear/Entrance	PARATRANSIT
Engine	Cummins ISB/L9, Electric	Cummins ISB/L9, Electric	Cummins ISB/L9, Electric	• ADA platform w/ dedicated door
Transmission	Allison B300/B400	Allison B300/B400	Allison B300/B400	• Q Straint positions w/ restraints
Fuel Tank Cap.	90 gal	90 gal	90 gal	• Handi-flip fold out seating
Pass. HVAC	Skirt Split/Rear	Skirt Split/Rear	Skirt Split/Rear	• Lift-U Instep ramp
Driver HVAC	Dash Mount	Dash Mount	Dash Mount	• Q-Pod
Front Axle	Solid Beam AAC	Solid Beam AAC	Solid Beam AAC	ELECTRICAL
Brakes	WABCO Air/ABS	WABCO Air/ABS	WABCO Air/ABS	• Fare Box
Rear Axle	ARS-20	ARS-20	ARS-20	• Multiplex
Tires	255/70R22.5	255/70R22.5	255/70R22.5	• LED destination package
Front Door	34" Electric push out	34" Electric push out	34" Electric push out	• AVL/GPS system
Rear Door	34" Electric push out	34" Electric push out	34" Electric push out	• 20" DVD monitors
Seating	26-28 passenger	28-34 passenger	34-40 passenger	SAFETY
Electrical Sys	Standard Relay Logic Hard Wire	Standard Relay Logic Hard Wire	Standard Relay Logic Hard Wire	• Fire suppression
				• Escape hatch
				PAINT & GRAPHICS
				• Custom Paint
				• Graphic Wraps

Mainstreet 30' 35' 40'



Total Height 130"
Total Int. Height 80.5"

715.301.0149

HOMETOWN TROLLEY.COM



SPECIALTY VEHICLES

Give us a call! 1-800-784-8726

New Trolleys

New Trolleys are Available for Purchase on HGAC Contract

Showing all 8 results



TROL8651 – New Hometown ADA Villager Demos – Never Been Sold

[Read more](#)



TROL7107 – New 2023 Hometown View Bus

[Read more](#)



TROL7105 – New Hometown Villager Trolley ADA

[Read more](#)



TROL7104 – New Hometown Villager Wedding Trolley

[Read more](#)



TROL7103 – New Hometown Villager Trolley

[Read more](#)



TROL7102 – New Hometown Low Floor Carriage ADA Trolley

[Read more](#)



TROL7101 – New Hometown Carriage Trolley

[Read more](#)



TROL7100 – New Hometown Streetcar Trolley

[Read more](#)



Q Vehicle Search

(866) 468-8480

TROLLEY BUSES

THE PERFECT BLEND OF MODERN TRANSIT AND VINTAGE CHARM.

From small private tours to everyday mass transit, trolleys provide unforgettable experiences for your passengers. Made-to-order, our trolley selection includes vintage finishes such as spiral brass, mahogany, and leather grab straps. With spacious interiors and large windows, passengers will enjoy views in comfort and style. Browse our in-stock selection of trolley buses for sale below.

[View Inventory](#)

[INVENTORY](#) / [FEATURES](#) / [POPULAR MODELS](#) / [MODEL 1 FEATURES](#) / [CONTACT US](#)

TROLLEY BUSES FOR SALE

Showing 1-2 of 2 results

Featured

Sort by



2020

ARBOC America 20



2023

Hampton Trolley Village 20



(866) 468-8480

Chassis: Freightliner XB
Engine: 6.7L V6

Luggage Type: None
Wheelchair Position: 2

Chassis: Ford F53
Engine:

Luggage Type: None
Wheelchair Position: 2

OUR PRICE: CONTACT US

Unit # 1723998
Quantity Available: 1

[See Details](#)

[Get a Quote](#)

OUR PRICE: CONTACT US

Unit # 1707995
Quantity Available: 2

[See Details](#)

[Get a Quote](#)

Showing 1-2 of 2 results

VEHICLE FEATURES

CAPACITY

Trolley buses can comfortably hold up to 48 passengers.

ACCESSIBILITY

We offer low-floor options for improved ease and accessibility.

FUEL EFFICIENCY

Choose from diesel or gasoline.

VINTAGE STYLE

Enjoy the nostalgic turn-of-the-century look with spiral brass, mahogany, leather grab straps, and lantern-style roofing.

COMFORT

Trolley vehicles feature spacious interiors and large windows for a truly enjoyable experience.



ORIGINAL MOLLY TROLLEY



The Original Molly Trolley is still very popular after 30 Years of production. The Original Molly Trolley has a split passenger cabin where the front half contains decorative arched sliding vent windows and the rear contains large viewing openings. These openings can be closed with a vinyl roll up curtain in summer use and window inserts for winter use. The large openings provide unobstructed viewing for picture taking as well as an exciting open air experience while moving along your scenic route. For those passengers not desiring the open air experience, the seats in the front provide a traditional ride. The Original Molly Trolley is manufactured with **Ford's F5D chassis** and is exceptional for all operations. The Original Molly Trolley can be equipped with a handicap lift and many other upgrades listed on our **Optional Equipment list**.

ORIGINAL MOLLY TROLLEY SPECIFICATIONS

- OVERALL LENGTH: **27' to 34'**
- OVERALL WIDTH: **96"**
- HEIGHT: **11'-6"**
- INSIDE WIDTH: **94"**
- AISLE WIDTH: **20"**
- HEADROOM: **6'-7"**
- SPEED: **Normal Highway**
- PASSENGER CAPACITY: **22-38**
- WHEEL BASE: **158" to 228"**
- APPROX. CURB WEIGHT: **11,500 lbs to 16,500 lbs**

Specifications are subject to change without notice

©2025 Molly Corporation 60 Willie Hill Rd. Wells, ME 04090 207.616.5908 info@mollytrolley.com

Search

Trolley Schedule

The City of Deadwood offers a transit service that stops at various locations around Deadwood including hotels and casinos. The trolley is not a 24-hour service.

The fee for the trolley is \$2.00 per person per ride or one (1) token per person per ride.

Tokens are available for purchase at select stops throughout Deadwood including the Welcome Center, 501 Main Street, and the History and Information Center, 3 Siever Street.

Day passes are \$5.00 per person and are available for purchase at the Welcome Center, History and Information Center and City of Deadwood Finance Office.



Trolley Winter Schedule effective September 14th through May 16th:

Sunday thru Thursday: 1st Trolley 10:00 a.m. to 10:00 p.m.

Friday: 1st Trolley 8:00 a.m. to 2:00 a.m.
2nd Trolley 1:30 p.m. to 12:30 a.m.

Saturday: 1st Trolley 8:00 a.m. to 2:00 a.m.
2nd Trolley 9:30 a.m. to 12:30 a.m.

Trolley Summer Schedule begins May 17th:

Sunday thru Thursday: 1st Trolley 8:00 a.m. to Midnight
2nd Trolley 9:30 a.m. to 10:30 p.m.

Friday and Saturday: 1st Trolley 8:00 a.m. to 2:00 a.m.
2nd Trolley 9:30 a.m. to 12:30 a.m.
3rd Trolley 5:20 p.m. to 10:20 p.m.

SUPPORTING DOCUMENTS

 [city_of_deadwood_-_rackcard_back_2022.jpg \(3 MB\)](#)

PARKING AND TRANSPORTATION

CONTACT INFORMATION

City of Deadwood
Parking and Transportation Department
108 Sherman Street
Deadwood, SD 57732

Phone: (605) 578-2082
Fax: (605) 722-0786

[View Full Contact Details](#)

[Staff Login](#) [Sitemap](#) [City Map](#)

City of Deadwood, 102 Sherman Street, Deadwood, SD 57732

a municode design