



## **HB 1012 House Appropriations Committee – HR Division**

Chair, Representative Jon Nelson

Holly Triska-Dally | Office of Refugee Services

Jan. 17, 2025

NORTH  
**Dakota**  
Be Legendary.

Health & Human Services

# North Dakota's History of Welcoming

- ND Population 1890: 190,983
- ND Population 1920: 646,872

By 1915, 79% of all North Dakotans were immigrants or the children of immigrants.



Today 38,355 immigrants live in North Dakota  
Comprising **5% of the population** but **6.2% of the labor force**  
Increase of 123% since 2010



# Our Mission

To create community collaborations that strengthen and guide newcomers as they become welcomed neighbors and valued contributors to the economy.

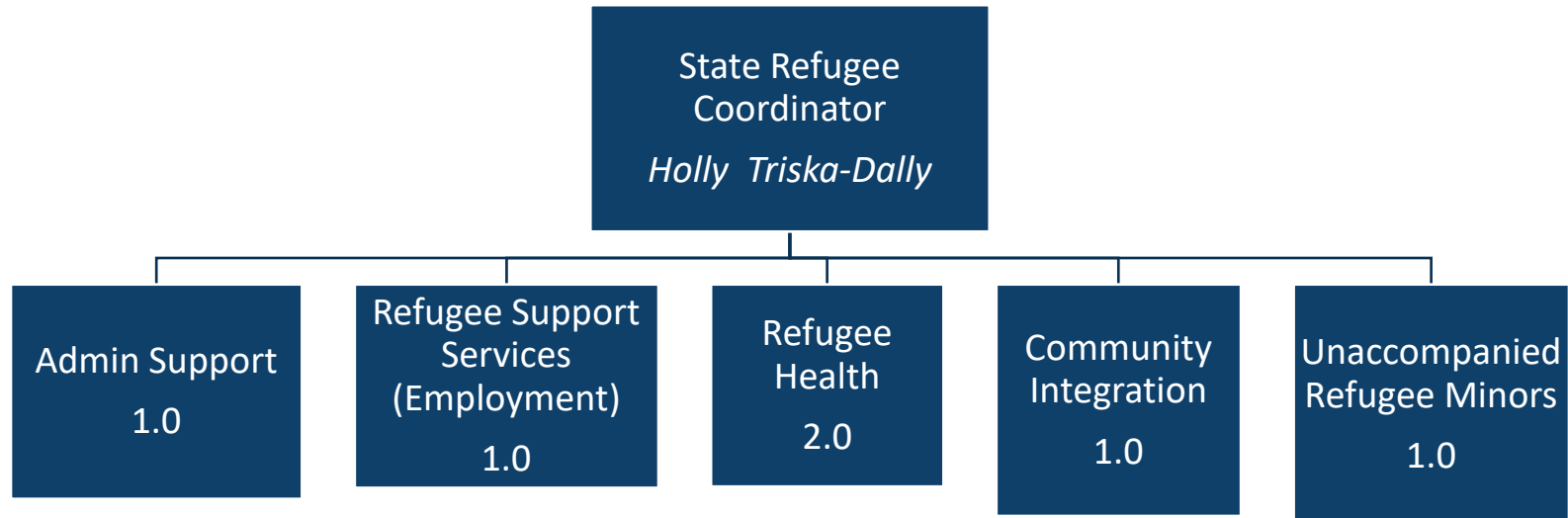
Chapter	Chapter Name
50-06-01.4	Structure of the Department a. Administration of programs for children and families, including refugee services



# Refugee Services

## Office of Deputy Commissioner/Refugee Services

23-25 FTE	25-27 FTE Requested	# of Temporary	# of Vacancies
7	7	1	0



# The Legal Process for Refugee Resettlement



## Overseas Vetting

8 Government Agencies

6 Background checks

3 in-person interviews

## U.S. Placement

10 Resettlement Agencies

Initial 90 days in the U.S.

Cultural Orientation

## Long-term Success

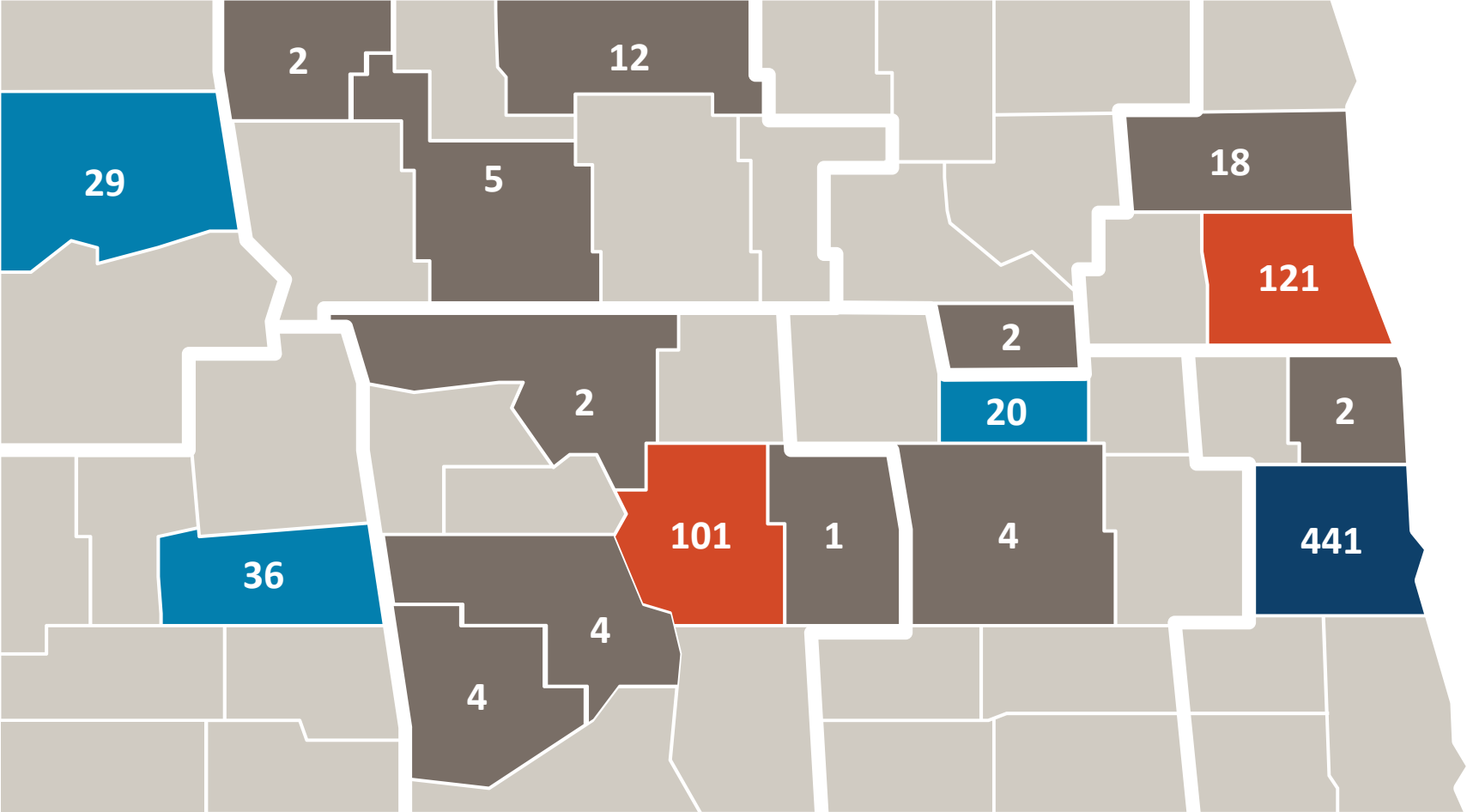
Employment Assistance

English Language Learning

Community Integration



# 2024 North Dakota Arrivals by County



**LEGEND**

- Over 200
- 76-199
- 20-75
- 1-19

**804 Statewide Arrivals**

**45% outside of Cass County**





# ORR funded- Refugee Cash Assistance Program

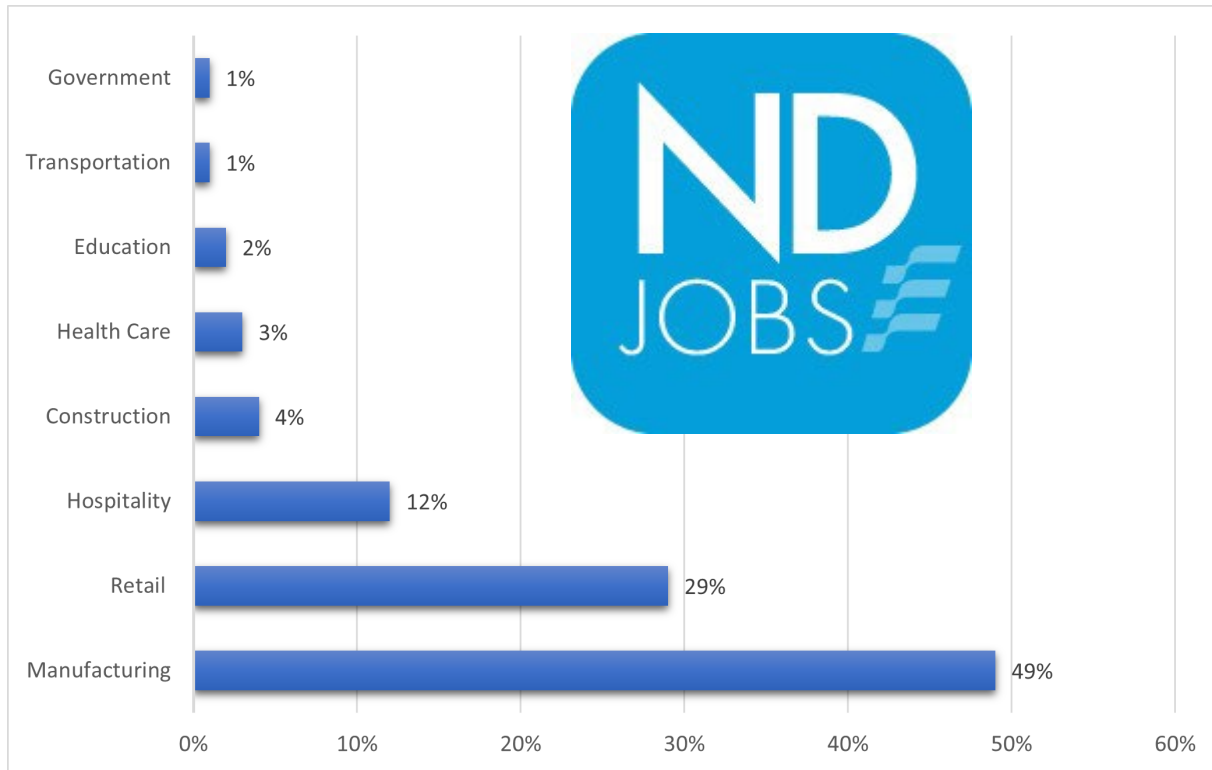
*Time limited to 12-months after U.S. Arrival*

*< 80% receive Cash Assistance at 8 months*

- **Requires Employment Services**
  - Incentive for Early Employment
- **Requires English Language Learning**



# Partnerships that Drive Success - Employment



## New American Employment Program

*North Dakota Job Service Centers*

- 636 Employable Adults
- 400 Entered Employment
- Average wage: \$18.53



# Partnerships that *Remove Barriers* to Employment



## English Learning

### *Adult Learning Centers*

- Remote Classes
- Mom and Me Classes
- Workforce-based English



## Community Integration

### *City Governments*

- Community Awareness
- Partnership Building
- Citywide Solutions



## Health Promotion

### *Community-Based Organizations*

- Reduce Isolation
- Improve Health Access
- Provider Trainings



# Refugee Services: 2023-2025 Successes

- Improved assessments and outcome measurement

## Launch of the Data Management System

- Improved access to English Language Learning

## Launch of Virtual ELL Program

- Expanded community-based and employment sector relationships

## Partnered with over 30 organizations in 10 communities, investing \$3.5M in 2024

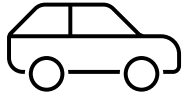
- Enhanced focus on behavioral health services

## Partnered with the Behavioral Health Division to establish 8 wellbeing groups to improve health outcomes.



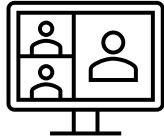


# 2025-2027 Biennium Goals



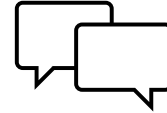
## Transportation Solutions

- Public Transport
- Driver's Training
- Car Ownership



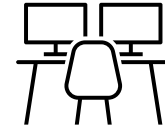
## Digital Literacy

- Communication
- Job Search
- Virtual Learning



## English Language

- Maximizing the first 12-months
- Learning post employment



## Institutional Partnerships

- Career & Technical Education
- Pre-CNA classes

# Trend of increasing arrivals

FFY	Arrivals	Percent Increase
2022	219	--
2023	421	92%
2024	804	91%
2025	1100	37%



# Comparison of Budgets and Funding

By Major Expense

Description	2023-25 Budget Base		Increase/ (Decrease)		2025-27 Executive Budget	
Salaries and Benefits	\$	859,688	\$	853,149	\$	1,712,837
Operating		565,731		1,977,410		2,543,141
IT Services		6,300		37,170		43,470
Grants		11,208,976		7,468,820		18,677,796
<b>Total</b>	<b>\$</b>	<b>12,640,695</b>	<b>\$</b>	<b>10,336,549</b>	<b>\$</b>	<b>22,977,244</b>
<b>General Fund</b>	<b>\$</b>	<b>-</b>	<b>\$</b>	<b>-</b>	<b>\$</b>	<b>-</b>
<b>Federal Funds</b>		<b>12,640,695</b>		<b>10,336,549</b>		<b>22,977,244</b>
<b>Other Funds</b>		<b>-</b>		<b>-</b>		<b>-</b>
<b>Total Funds</b>	<b>\$</b>	<b>12,640,695</b>	<b>\$</b>	<b>10,336,549</b>	<b>\$</b>	<b>22,977,244</b>



# Comparison of Budgets and Funding

## By Budget Account Code

Description	2023-25 Budget Base	Increase/ (Decrease)	2025-27 Executive Budget
511x Salaries - Regular	\$ 578,918	\$ 607,174	\$ 1,186,092
516x Salaries Benefits	280,770	245,975	526,745
<b>Total Salaries &amp; Benefits</b>	<b>\$ 859,688</b>	<b>\$ 853,149</b>	<b>\$ 1,712,837</b>
52x Travel	58,425	10,775	69,200
53x Supply	5,000	7,200	12,200
54x Postage & Printing	200	7,450	7,650
58x Rent/Leases - Bldg/Equip	7,801	(7,801)	-
61x Professional Development	14,965	110,093	125,058
62x Fees - Operating & Professional	479,340	1,842,193	2,321,533
53x Supplies	6,300	6,300	12,600
60x IT Expenses	-	30,870	30,870
71x Grants, Benefits, & Claims	11,208,976	7,468,820	18,677,796
<b>Total Operating</b>	<b>\$ 11,781,007</b>	<b>\$ 9,483,400</b>	<b>\$ 21,264,407</b>
<b>Total</b>	<b>\$ 12,640,695</b>	<b>\$ 10,336,549</b>	<b>\$ 22,977,244</b>

# Operating Schedule

DESCRIPTION	2023-25 BIENNIUM AMOUNT	EXECUTIVE BUDGET RECOMMENDATIO N	INCREASE/ (DECREASE)
Data Management System-M&O, Development	\$ 220,000	\$ 2,107,474	\$ 1,887,474
Refugee Services Translation, Outreach, Interpreters,Other Fees	20,000	100,000	80,000
Unaccompanied Minor Refugee (URM)	239,340	114,059	(125,281)
<b>GENERAL FUND</b>	\$ -	\$ -	\$ -
<b>FEDERAL FUND</b>	<b>479,340</b>	<b>2,321,533</b>	<b>1,842,193</b>
<b>OTHER FUND</b>	-	-	-
<b>GRAND TOTAL</b>	<b>\$ 479,340</b>	<b>\$ 2,321,533</b>	<b>\$ 1,842,193</b>

# Grants Schedule

DESCRIPTION	2023-25 BIENNIUM AMOUNT	2025-2027 EXECUTIVE BUDGET RECOMMENDATION	INCREASE/ (DECREASE)
URM Direct Benefits	\$ 1,405,366	\$ 1,497,060	\$ 91,694
AVHSZ Contract	2,715,946	3,250,736	534,790
Community Integration Facilitator and Eligibility Staff	-	1,130,000	1,130,000
Refugee Cash Assistance Contracts	2,345,536	5,200,000	2,854,464
Refugee Medical Assistance Contracts	512,128	1,500,000	987,872
Refugee Support Services Contracts	4,230,000	6,100,000	1,870,000
			-
<b>GENERAL FUND</b>	\$ -	\$ -	\$ -
<b>FEDERAL FUND</b>	<b>11,208,976</b>	<b>18,677,796</b>	<b>7,468,820</b>
<b>OTHER FUND</b>	-	-	-
<b>GRAND TOTAL</b>	<b>\$ 11,208,976</b>	<b>\$ 18,677,796</b>	<b>\$ 7,468,820</b>



# The Economic Impact of Welcoming



2005 – 2019

Refugee tax contributions after the cost of initial government services

**\$124 Billion**



2022

Refugee spending power

**\$82 Billion**



2022

Business income from 190,000 U.S. Refugee entrepreneurs

**\$6.7 Billion**



Refugees: **78.2%**

U.S. Born **61.9%**



# Economic Draw to North Dakota

Refugee Secondary Migration:

**FFY 22**

In migration: 71  
Out migration: 8

**FFY 23**

In migration: 581  
Out migration: 2

# Contact Information

Holly Triska-Dally  
State Refugee Coordinator  
htriskadally@nd.gov

