



House Bill 1012 – Child Support

House Appropriations Committee | HR Division
Representative Jon Nelson, Chairman

February 4, 2025 | Jim Fleming, Director | Child Support Section

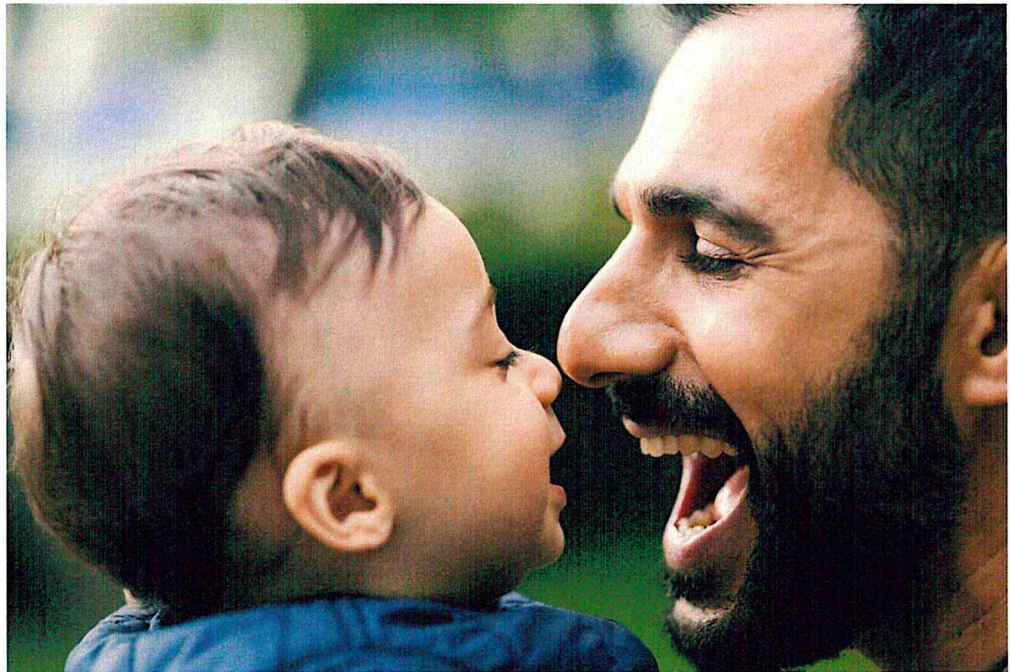
NORTH
Dakota
Be Legendary.

Health & Human Services

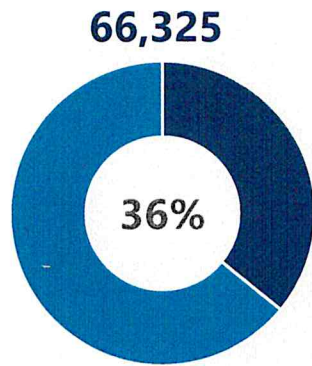
Who we serve

As of 2024, the Child Support section delivers programs and services to:

- 66,325 children
- 85,211 parents
- 50,805 cases (1/1/2025)
 - Full service. – 29,925
 - Limited service – 20,880
- Employers 87,258

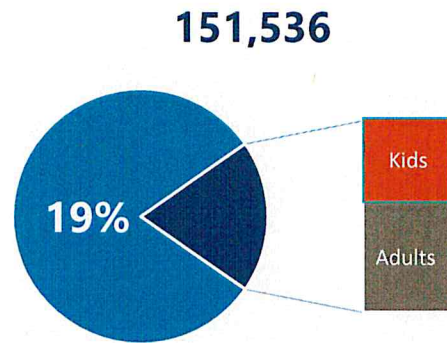


Child Support - Who We Serve



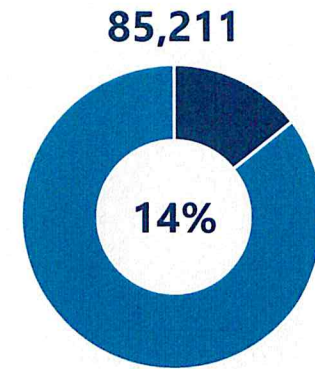
1 in 3 ND kids

In 2024, 66,325 children received child support services. That is more than 1 of every 3 children under age 18 in the state.



1 in 5 North Dakotans

151,536 people received child support services in North Dakota in 2024.



1 in 7 ND adults

In 2024, 85,211 parents received child support services. That means nearly 1 of every 7 adults (age 18+) in the state has a connection to the child support division.

Child Support section provides services that promote family self sufficiency



Establish paternity

- In-hospital paternity acknowledgment program
- Genetic tests
- Paternity judgment

Customer Service

- 24/7/365 information on website and interactive phone system
- Customer service call center
- Appointments

Establish and modify court orders for child and medical support

- Child Support guidelines
- Periodic reviews

Enforcement

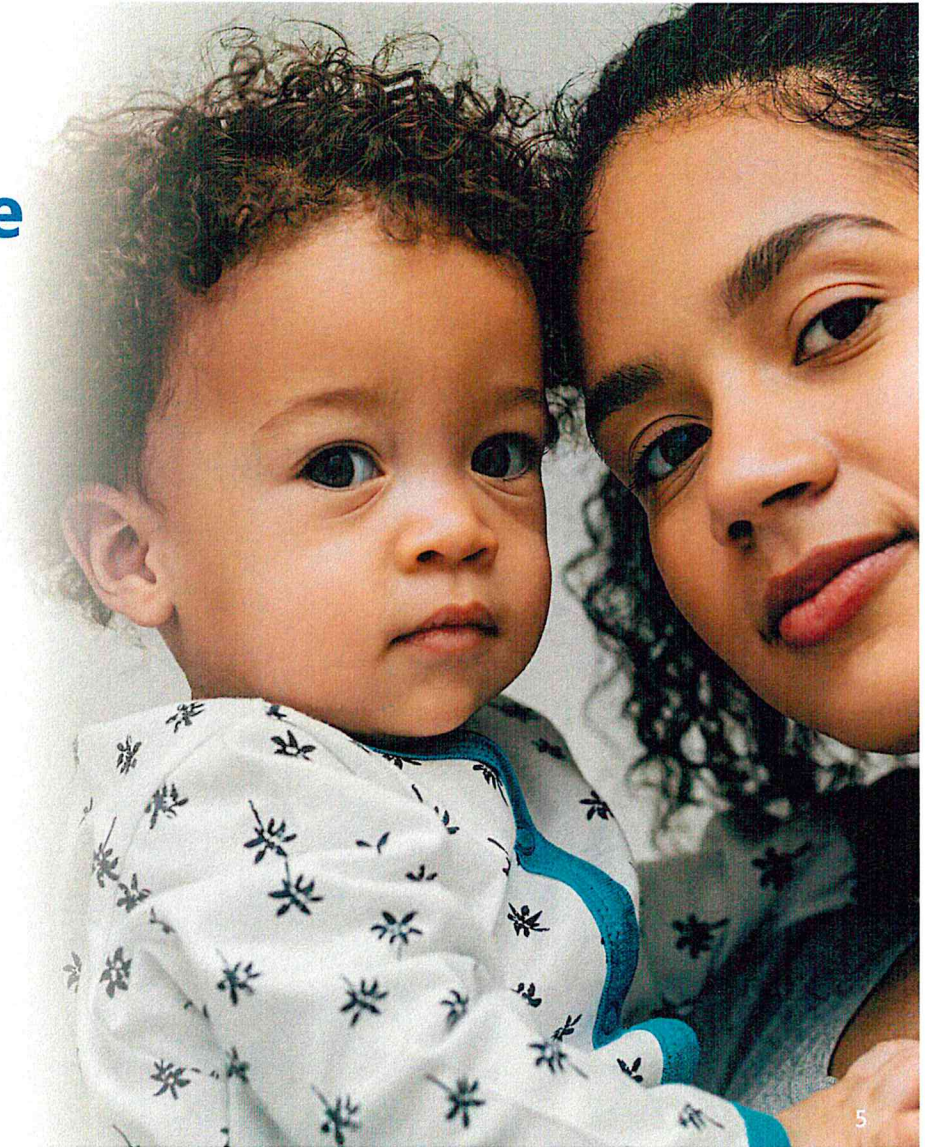
- Income withholding
- Tax refunds
- License suspension
- Employment assistance

Account Management

- Receive payments
- Maintain payment ledger
- Disburse payments

Child Support Opening a Full-Service case

- TANF Referral
- Medicaid Referral
- Foster Care Referral
- Referral from another state or tribal or international child support program
- Application by a parent



What we do – Full Service and Limited Service

All Cases

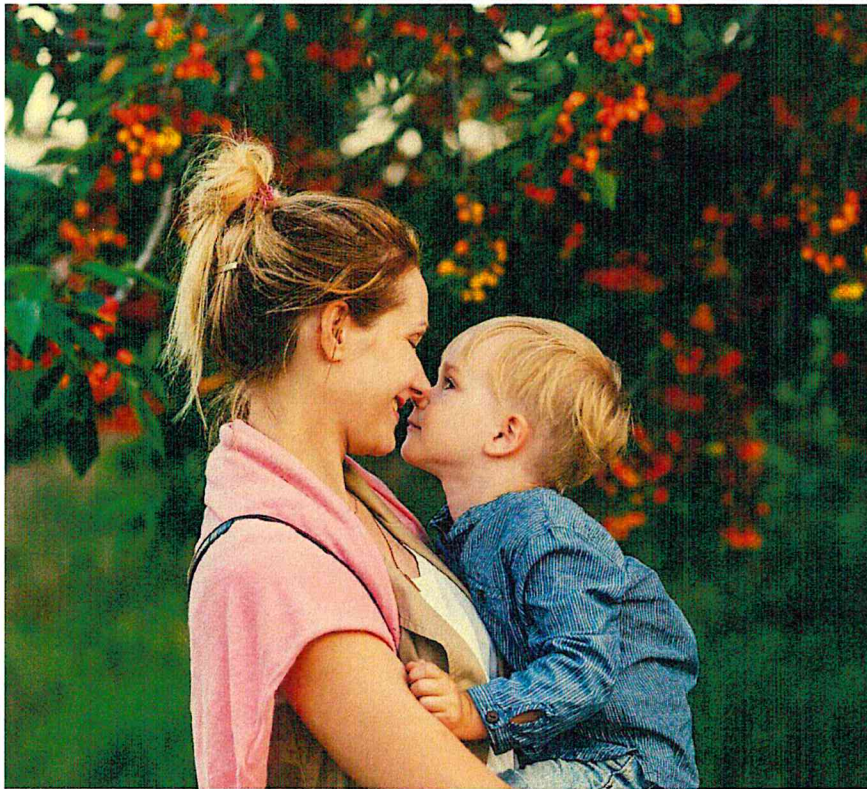
- Customer service
- Income withholding
- Account management

Full-Service Cases

- Establishment of paternity
- Establishment of a child support and medical support order
- Other enforcement actions such as tax refund offset and license suspension
- Employment services
- Periodic review and modification of child support obligation



Meet Bobbi Jo & Tanner



Bobbi Jo is 22 years old and lives in Devils Lake. She used to live with the father of her two-year old son Tanner.

Tanner's father acknowledged his paternity in the hospital when Tanner was born but broke up with Bobbi Jo when Tanner was a baby.

Bobbi Jo has a part-time job at a local convenience store. She is receiving health coverage for herself and Tanner under the Medicaid program.

She is struggling to make ends meet, but currently makes too much income to be eligible for SNAP or TANF.

Meet Molly and Mark

Molly and Mark's dad got divorced when Mark was 5. Mark's dad has been in and out of jail and has not been a regular part of Mark's life since the divorce.

Molly lost her job and started drinking too much. Eventually, Mark was placed in Foster Care at age 16.

HHS is working with Molly, who is committed to overcoming her addiction, regaining employment, and reuniting with Mark in her home.



A close-up photograph of the American flag, showing the stars and stripes, with a blurred background of lights.

Supportive Services for Homeless Veterans

- Community Action Partnership of North Dakota
- Improving Communication, including Delivery of Legal Notices
- Understanding Child Support Guidelines and the Modification Process

Child Support Partners



- Employers
- Judges
- Clerks of court
- Sheriffs
- ND state and local government agencies
- Other state and tribal child support programs
- Private attorneys
- Car dealers
- Gaming operators

Child Support Tribal Partnerships

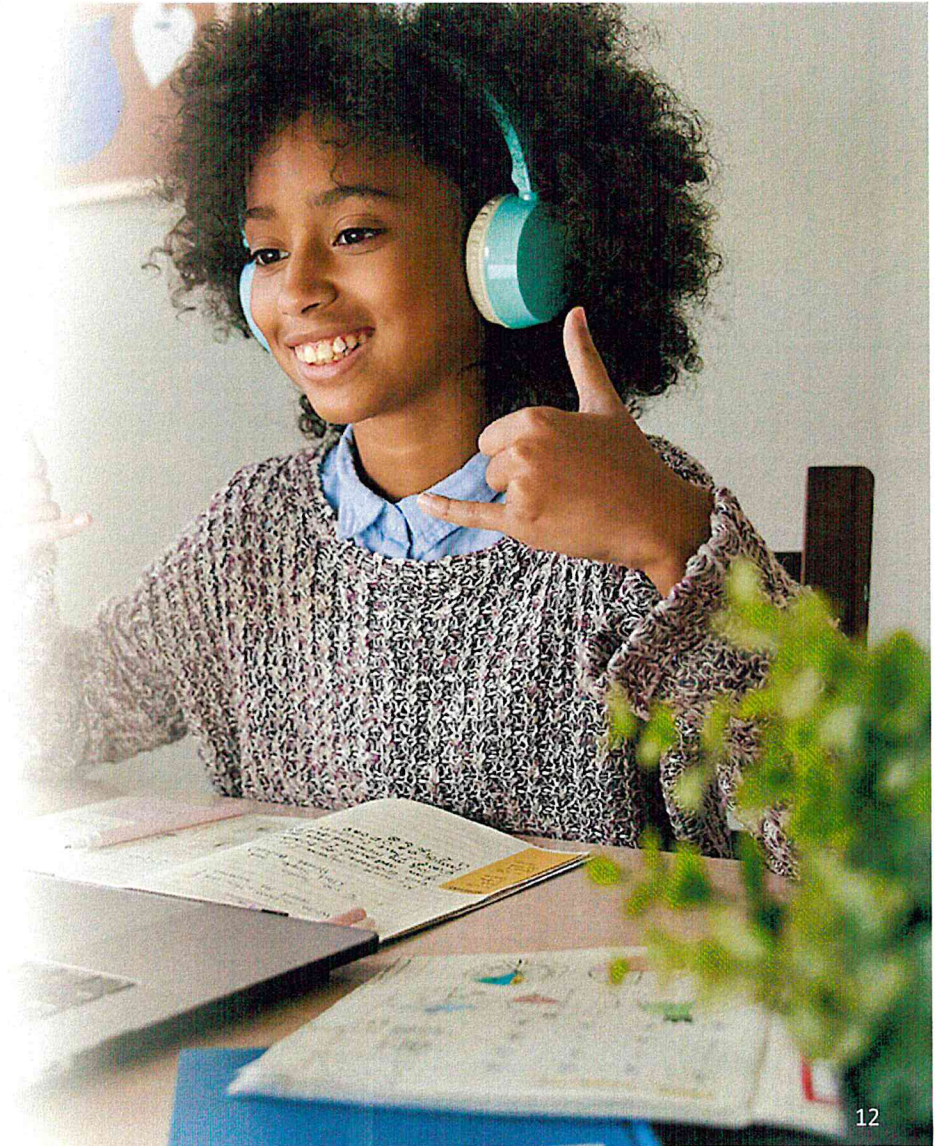
- “Lack of jurisdiction” cases are excluded from federal performance measures
- Partnership with Three Affiliated Tribes and Standing Rock Sioux Tribe child support programs
- Bring actions in Turtle Mountain and Spirit Lake tribal courts
- Host Tribal Offset Partnership so tribes can access federal offset services



Child Support Return on Investment

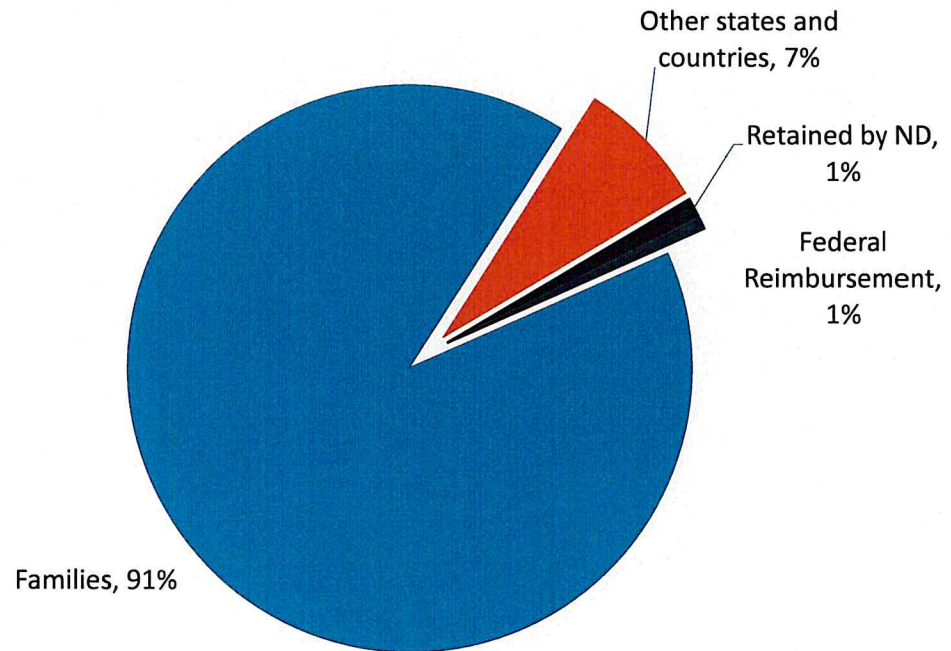
When child support is received, the child is able to grow up in a more secure and stable environment.

- Studies have shown that for every **\$1.00** a family **receives** in child support, **\$0.19** is **saved** in reduced need for TANF, SNAP, Medicaid and other programs (nearly \$20 million in FY 2024)
- Every **\$1.00 spent** on Child Support **generated \$6.52 for family recipients**
- Every **\$1.00 in state General Funds spent** on Child Support **generates \$19.18 in support for family recipients**



Collections - Where the \$115 million goes (FY 2024)

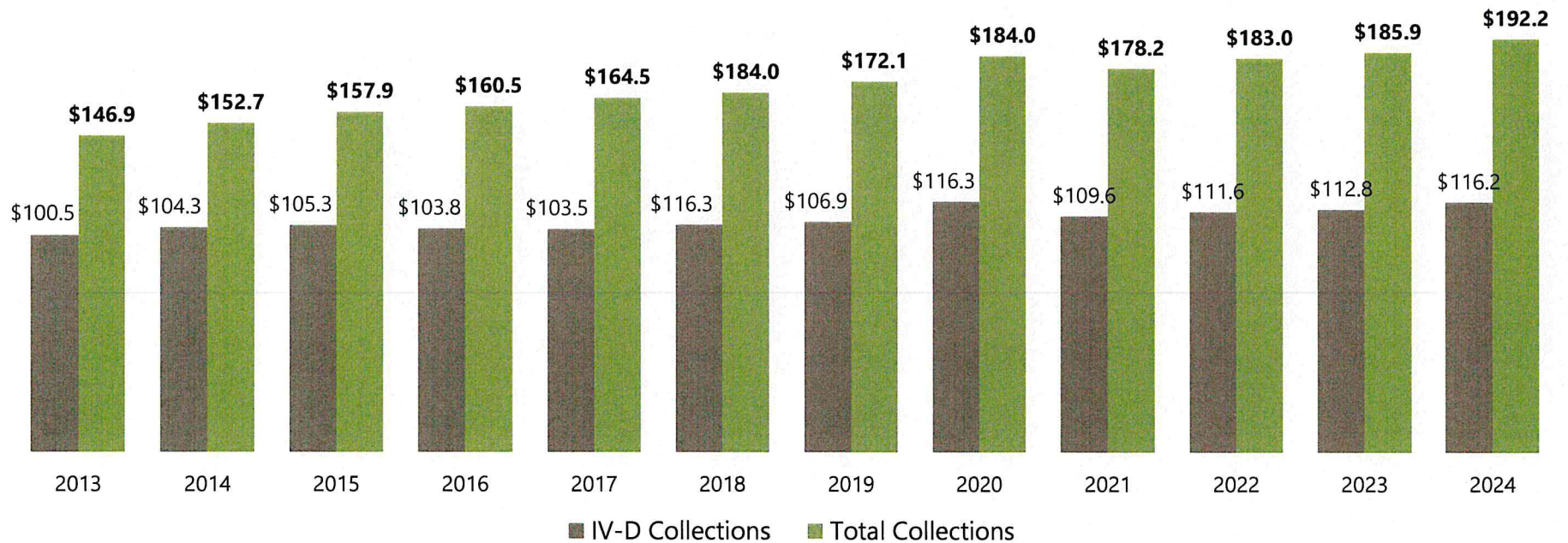
Child support agencies work collaboratively, across state lines, to ensure that families receive the child support they are owed regardless of where they live.



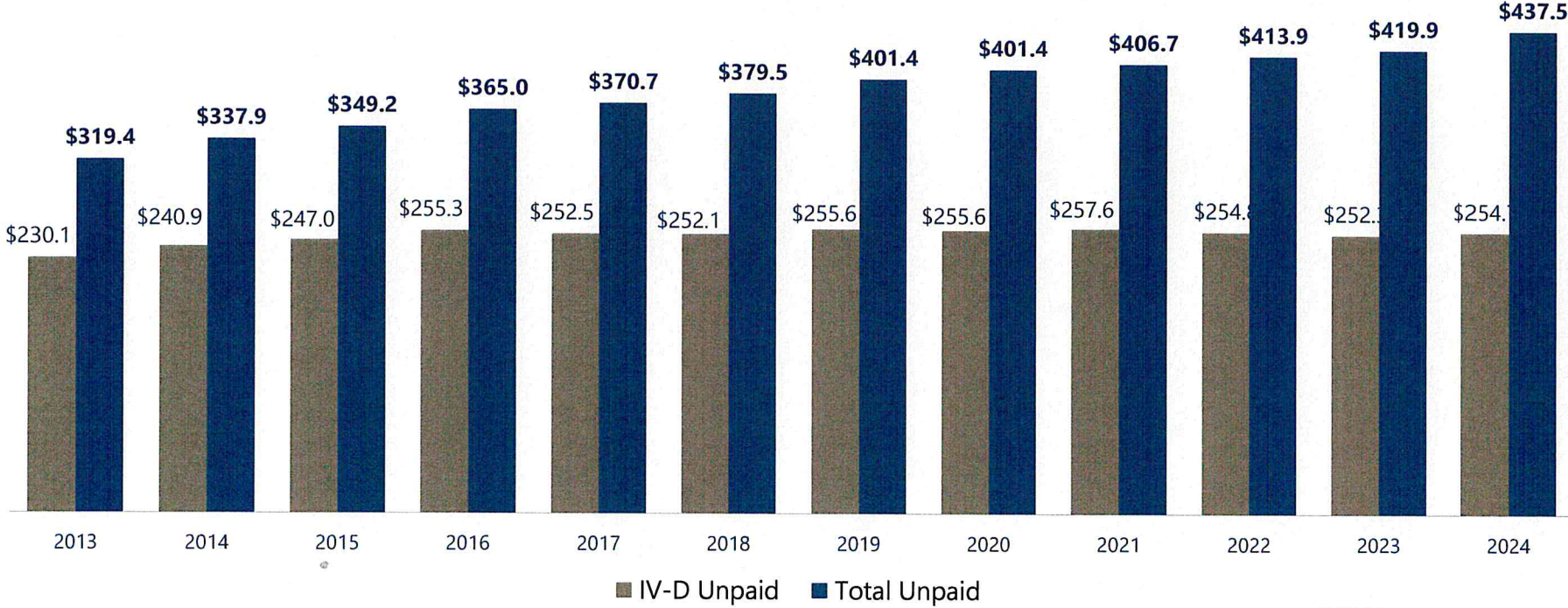
Child Support Performance Measures

	Orders Established	Paternity Established	Current Support	Cases with Arrears Collection	Cost Benefit
ND FFY 2024	90.43%	109.95%	78.55%	70.73%	\$6.52
ND FFY 2023	91.36% (13)	107.46% (5)	77.36% (2)	68.52% (10)	\$5.64 (11)
#1 State	95.07%	179.27%	82.21%	83.24%	\$10.74
#5 State	94.28%	107.46%	73.39%	75.67%	\$7.75
#10 State	91.70%	101.52%	70.79%	68.52%	\$5.83
US FFY 2023	86.37%	99.52%	65.07%	64.04%	\$4.37

Collections continue to increase



Unpaid support in full-service cases is being contained

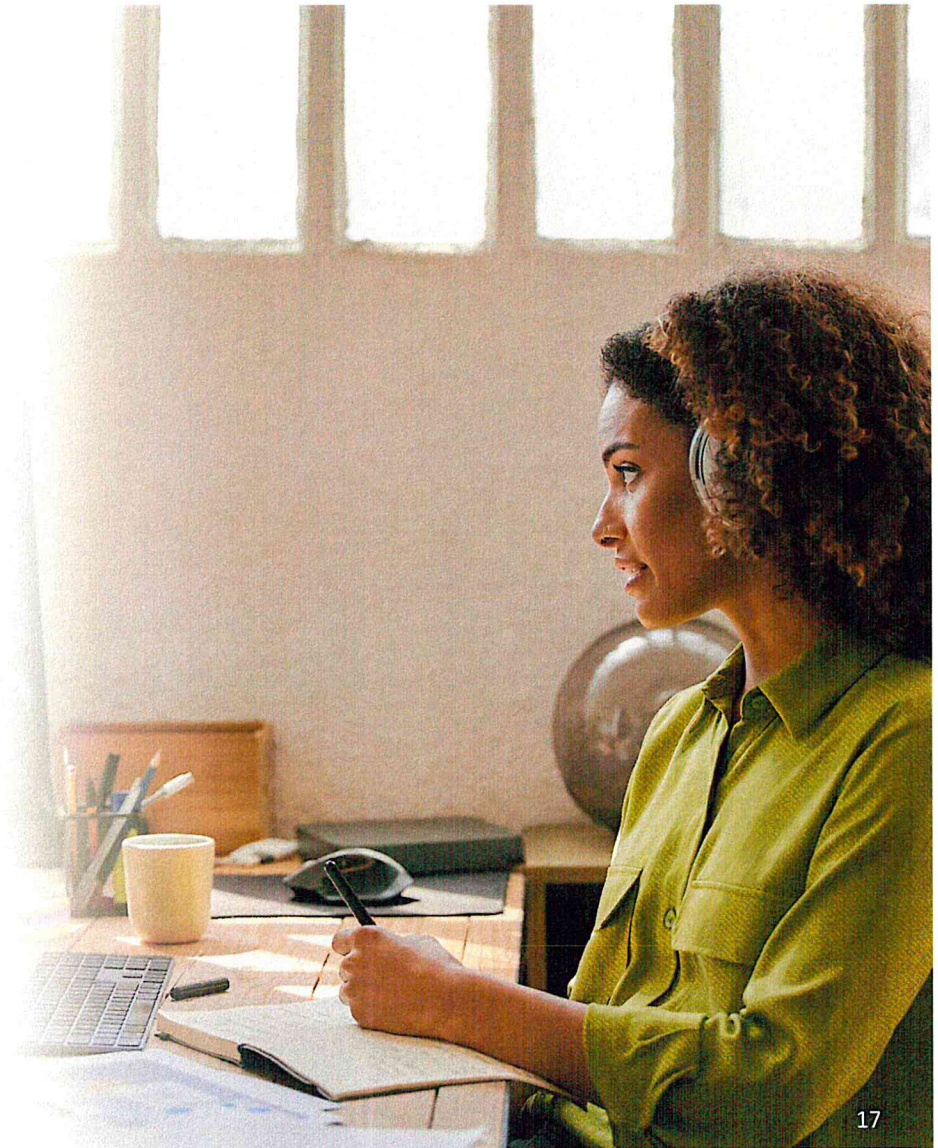


Team Structure and Function

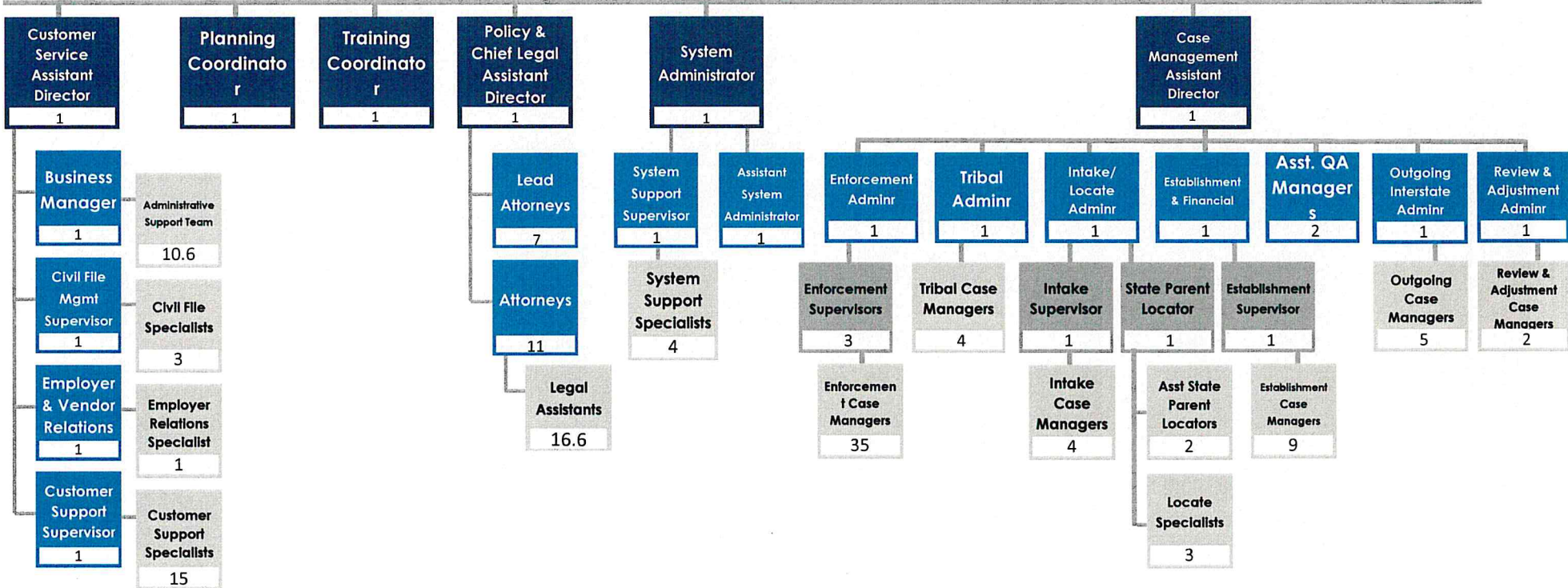
Position Numbers Assigned/ Funding Exists	Positions Filled	# of Vacancies	# of Temporary Staff
161.2	156.2	5*	4*

*Numbers as of 12/1/2024

Average Age	49
Avg Years of Service	13.2
Retirement Risk	5%
Turnover 2021	5%
Turnover 2022	7%
Turnover 2023	7%
Turnover 2024	7%



Child Support Director James Fleming



Comparison of Budgets and Funding

By Budget Account Code

DESCRIPTION	2023-25 LEGISLATIVE BASE	2025-27 EXECUTIVE BUDGET RECOMMENDATION	INCREASE / (DECREASE)
511x Salaries - Regular	\$ 20,250,328	\$ 21,612,401	\$ 1,362,073
513x Salaries Temp	136,900	95,744	(41,156)
516x Salaries Benefits	10,724,158	11,641,175	917,017
Total Salaries & Benefits	\$ 31,111,386	\$ 33,349,319	\$ 2,237,934
52x Travel	39,897	92,013	52,116
53x Supply	25,294	20,464	(4,830)
54x Postage & Printing	160,470	156,673	(3,797)
55x Equipment under \$5,000	7,250	3,000	(4,250)
57x Insurance	650	250	(400)
58x Rent/Leases - Bldg/Equip	653,449	565,324	(88,125)
59x Repairs	45,941	32,704	(13,237)
61x Professional Development	21,780	18,210	(3,570)
62x Fees - Operating & Professional	1,550,975	1,088,492	(462,483)
53x Supplies-IT	100,000	110,726	10,726
60x IT Expenses	65,053	3,754,149	3,689,096
Total Operating	\$ 2,670,759	\$ 5,842,005	\$ 3,171,246
Total	\$ 33,782,145	\$ 39,191,324	\$ 5,409,180
Total General	\$ 9,412,781	\$ 10,970,726	\$ 1,557,945
Total Federal	\$ 20,455,789	\$ 22,889,228	\$ 2,433,439
Total Other	\$ 3,913,575	\$ 5,331,370	\$ 1,417,795

Budget as % of HHS Budget
0.6%

Budget Funding Source

General 26.1%
Federal 54.9%
Other 13.6%

Budget Bypass-Through

Paid to Private Providers 2.8%
HHS Direct Service 0.0%
HHS Admin 87.4%
HHS Technology 9.9%

Operating Schedule

DESCRIPTION	2023-25 BIENNIUM AMOUNT	INCREASE/ (DECREASE)	TOTAL	2025-27 EXECUTIVE BUDGET RECOMMENDATION		
				GENERAL FUND	FEDERAL FUND	OTHER FUND
LexisNexis, HMS Contract, Supreme Court, Access & Visitation, Labcorp, Informatix, Interpreters	\$ 1,588,873	\$ (500,381)	\$ 1,088,492	\$ 370,087	\$ 718,405	\$ -
GENERAL FUND	\$ 540,217	\$ (170,130)	\$ 370,087	\$ 370,087	\$ -	\$ -
FEDERAL FUND	1,048,656	(330,251)	718,405	-	718,405	-
OTHER FUND	-	-	-	-	-	-
GRAND TOTAL	\$ 1,588,873	\$ (500,381)	\$ 1,088,492	\$ 370,087	\$ 718,405	\$ -

Grants Schedule

DESCRIPTION	2023-25 BIENNIUM AMOUNT	INCREASE/ (DECREASE)	2025-27 EXECUTIVE BUDGET RECOMMENDATION			
			TOTAL	GENERAL FUND	FEDERAL FUND	OTHER FUND
Not applicable	\$ -	\$ -	\$ -	\$ -	\$ -	\$ -

GENERAL FUND	\$ -	\$ -	\$ -	\$ -	\$ -	\$ -
FEDERAL FUND	-	-	-	-	-	-
OTHER FUND	-	-	-	-	-	-
GRAND TOTAL	\$ -	\$ -	\$ -	\$ -	\$ -	\$ -

Comparison of Budget Expenditures and Projections

By Budget Account Code

DESCRIPTION	2023-25 LEGISLATIVE BASE	EXPENDED AS OF 12/31/2024	PROJECTION THROUGH 6/30/2025	UNDER / (OVER) BUDGET
511x Salaries - Regular	\$ 20,250,328	\$ 15,140,425	\$ 20,135,477	\$ 114,851
513x Salaries Temp	136,900	98,405	174,677	(37,777)
514x Salaries Overtime	-	19,038	19,038	(19,038)
516x Salaries Benefits	10,724,158	7,685,090	10,314,896	409,262
Total Salaries & Benefits	\$ 31,111,386	\$ 22,942,958	\$ 30,644,087	\$ 467,299
52x Travel	39,897	44,425	54,400	(14,503)
53x Supply	25,294	25,145	33,280	(7,986)
54x Postage & Printing	160,470	144,658	184,775	(24,305)
55x Equipment under \$5,000	7,250	-	-	7,250
57x Insurance	650	150	313	338
58x Rent/Leases - Bldg/Equip	653,449	446,635	607,411	46,038
59x Repairs	45,941	23,044	34,529	11,412
61x Professional Development	21,780	120,141	125,586	(103,806)
62x Fees - Operating & Professional	1,588,873	434,888	832,106	756,767
53x Supplies-IT	100,000	56,507	81,507	18,493
60x IT Expenses	27,155	6,682	13,471	13,684
Total Operating	\$ 2,670,759	\$ 1,302,274	\$ 1,967,377	\$ 703,382
Total	\$ 33,782,145	24,245,232	\$ 32,611,463	\$ 1,170,681
Total General	\$ 9,412,781	\$ 7,502,500	\$ 9,488,960	\$ (76,179)
Total Federal	\$ 20,455,789	\$ 14,133,059	\$ 19,233,899	\$ 1,221,890
Total Other	\$ 3,913,575	\$ 2,609,673	\$ 3,888,605	\$ 24,970

On the Horizon

Supporting Family Stability & Economic Health

20,000

Over 20,000 families who are owed child support are not receiving the program's full services

\$25.5 million

More than \$25.5 million in child support per year is not received in the month when it is due

\$254 million

More than \$254 million is owed in past-due support in full-service cases and over \$437.4 million total in all cases

Summary and key takeaways

- **Program efficiency** continues to improve
- **Revised referral strategies** will further improve program integration
- **Program performance** is strong but has further room for improvement
- **Service improvements** are anticipated from a modern case management system



Contact Info

Jim Fleming

Director, Child Support Section

jfleming@nd.gov



childsupport@nd.gov



(800) 231-4255

