

# Dakota College at Bottineau

## Senate Appropriations Committee - Education and Environment Division

69<sup>th</sup> Legislative Session  
January 20, 2025

Carmen Simone, PhD -- Campus Dean / CEO  
Steve Shirley, PhD -- President



DAKOTA COLLEGE AT  
BOTTINEAU

# Overview

- ▶ Unique within North Dakota University System
  - ▶ Affiliate institution of Minot State University
  - ▶ Independently accredited and managed
  - ▶ Coordinate services for expertise and cost-sharing



- ▶ Strength through collaboration
- ▶ Focus on serving northcentral North Dakota



DAKOTA COLLEGE AT  
BOTTINEAU

# Statutory Authority

## North Dakota Constitution, Article XIX, Section 216 (adopted 1889)

Fourth. A School of Forestry, or such other institution as the legislative assembly may determine, at such place in one of the counties of McHenry, Ward, Bottineau or Rolette, as the electors of said counties may determine by an election for that purpose, to be held as provided by the legislative assembly.

## North Dakota Constitution, Article VIII, Section 6

1. State Board of Higher Education is created for the control and administration of:
  - e. the school of forestry, at Bottineau.

## North Dakota Century Code, Chapter 15, Section 10

1. State Board of Higher Education shall have control and administration of:
  5. the following colleges: Bismarck state college, Dakota college at Bottineau, Lake Region state college, and Williston state college.

## North Dakota Century Code, Chapter 15, Section 16

1. The school of forestry must be located at Dakota college, Bottineau, North Dakota.



DAKOTA COLLEGE AT  
BOTTINEAU

# Mission and Responsibility

Original Purpose - Forestry Education

*North Dakota School of Forestry (1906)*

Today - one of five public community colleges in North Dakota

*Dakota College at Bottineau (2009)*

## The community college mission includes:

- ▶ transfer coursework equivalent to the first two years of a baccalaureate degree
- ▶ postsecondary career and technical education programming
- ▶ short-term community and workforce training courses
- ▶ dual credit opportunities
- ▶ community outreach and enhancement
- ▶ student life and student support services



DAKOTA COLLEGE AT  
BOTTINEAU

# DAKOTA COLLEGE AT BOTTINEAU

STUDENT-FOCUSED AND COMMUNITY-CENTERED

## VALUES

INTEGRITY, ENGAGEMENT, INCLUSION AND PASSION

## MISSION

PROVIDES A QUALITY EDUCATION IN A CARING ENVIRONMENT

## VISION

ADAPTS TO THE CHANGING EDUCATIONAL LANDSCAPE  
TO EMPOWER STUDENTS AND IMPACT COMMUNITIES



***Adopted in  
March 2023***



DAKOTA COLLEGE AT  
BOTTINEAU

# Affiliate Institution of Minot State University

## Shared Services

- ▶ Classroom and Office Space
- ▶ Accounting Services
- ▶ Payroll Processing
- ▶ Business Office Support
- ▶ Institutional Research Support
- ▶ Human Resources Support
- ▶ Printing Services
- ▶ Compliance / Civil Rights Support
- ▶ Passport Program for Underprepared Students

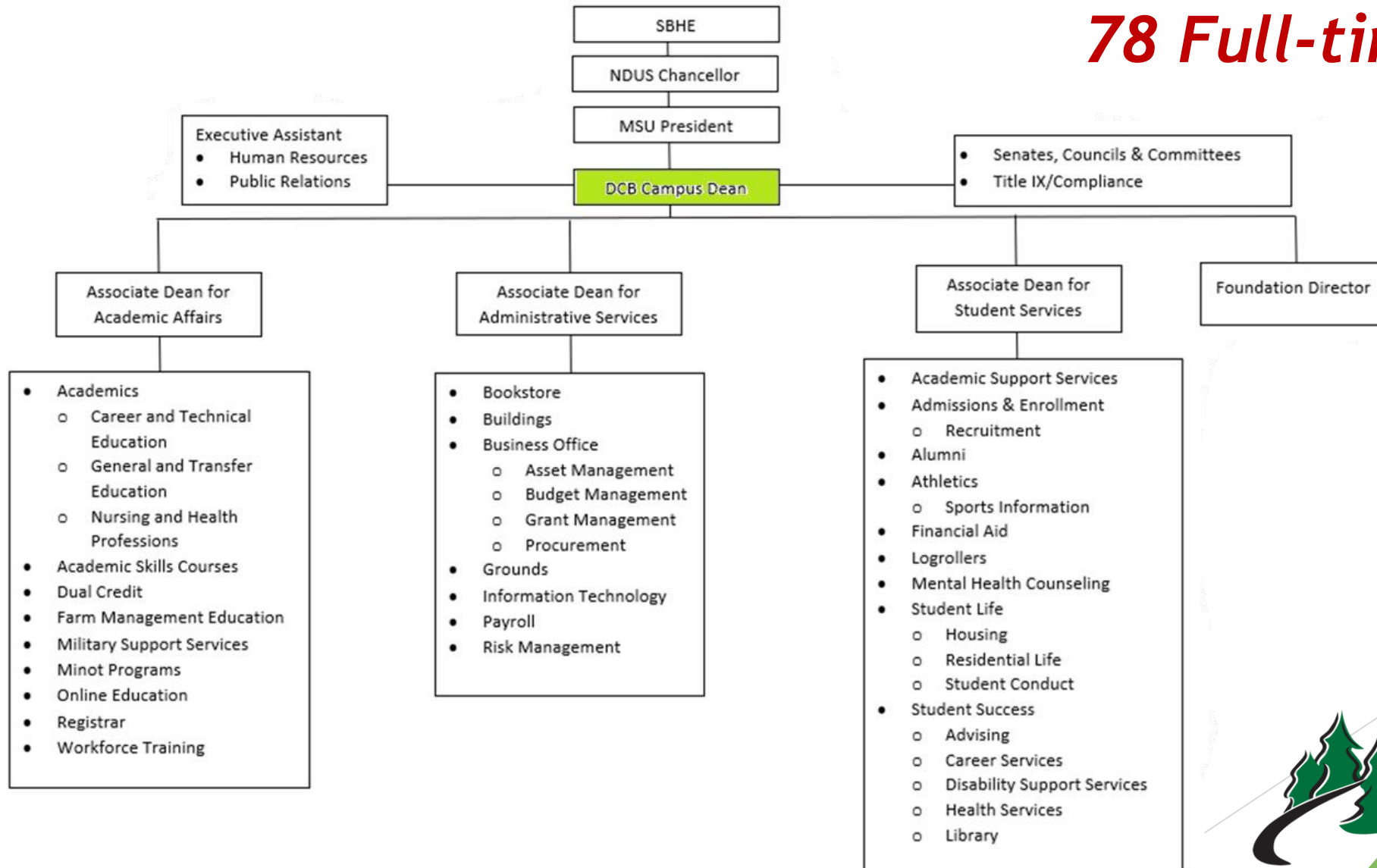
*This approach allows us to focus our funding into the classroom*



DAKOTA COLLEGE AT  
BOTTINEAU

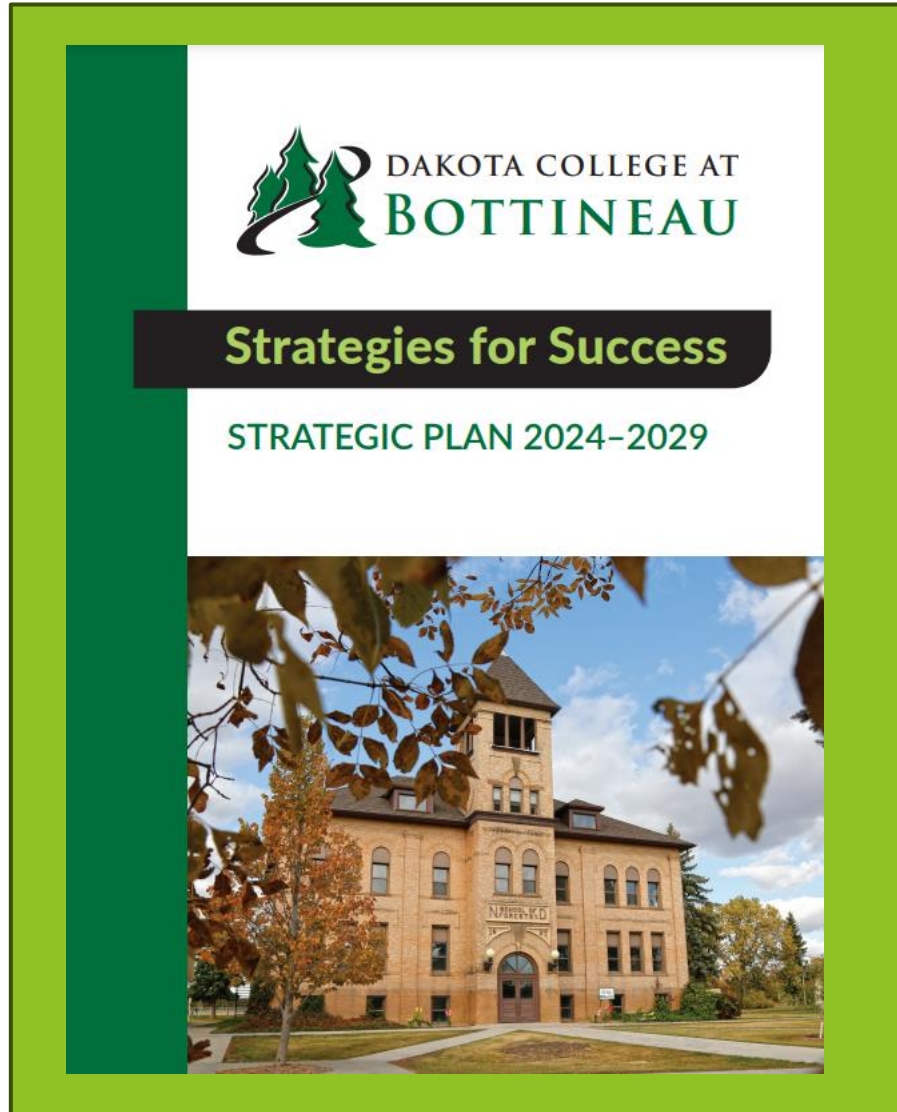
# Organizational Chart

**78 Full-time Employees**



DAKOTA COLLEGE AT  
BOTTINEAU

# Accomplishments During Last Biennium



## Priorities:

**Student Success**

**Community Commitment**

**Institutional Improvement**

*Adopted in early 2024*

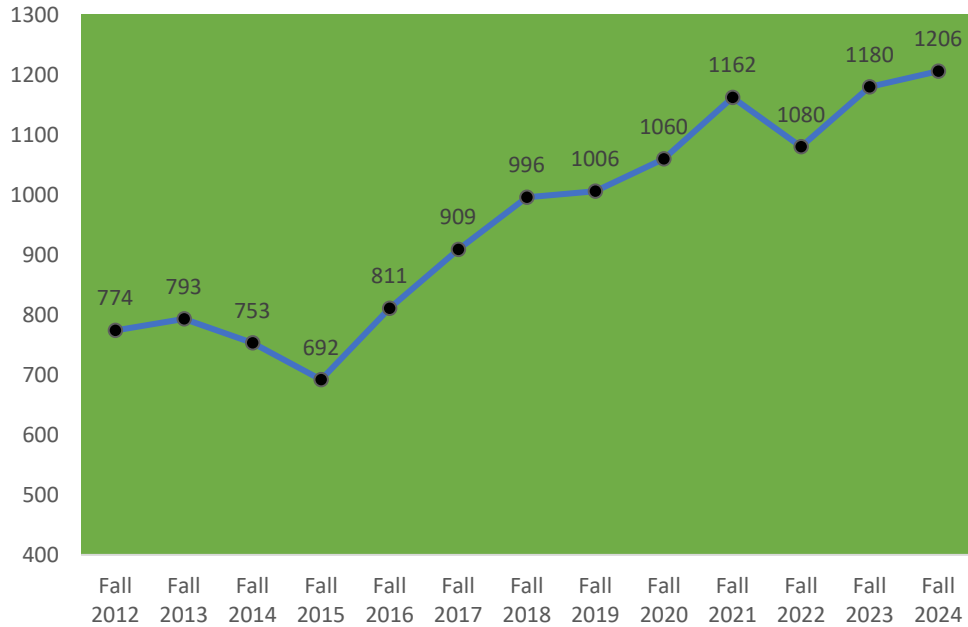


DAKOTA COLLEGE AT  
BOTTINEAU



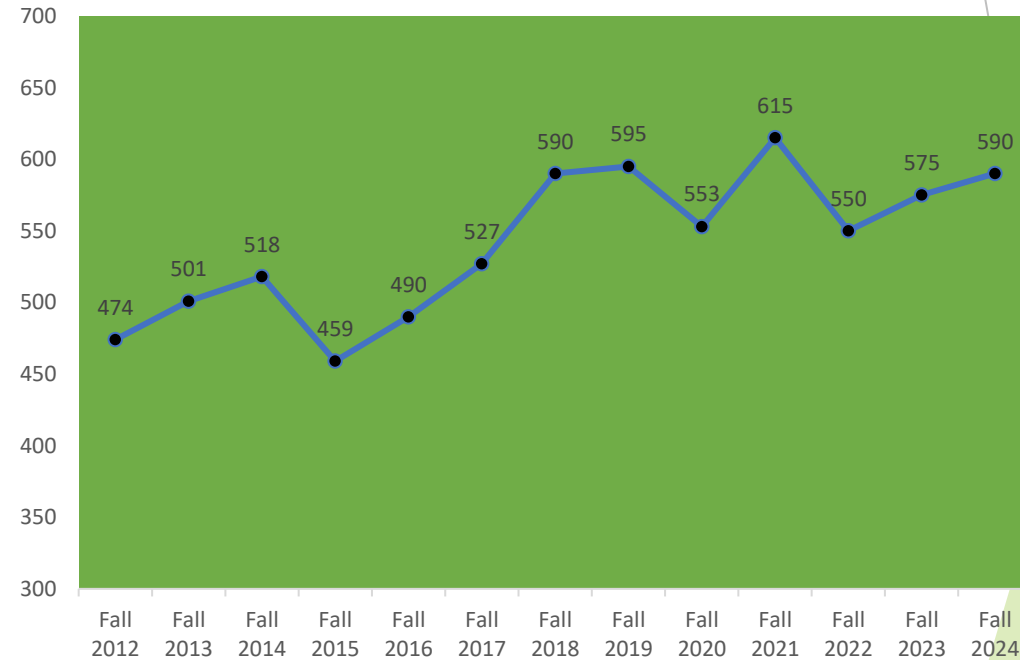
# Student Success – Enrollment Trends

## Headcount



► **74% Increase** (Fall 2015 to Fall 2024)

## Full Time Equivalent Students (FTE)



► **28% Increase** (Fall 2015 to Fall 2024)

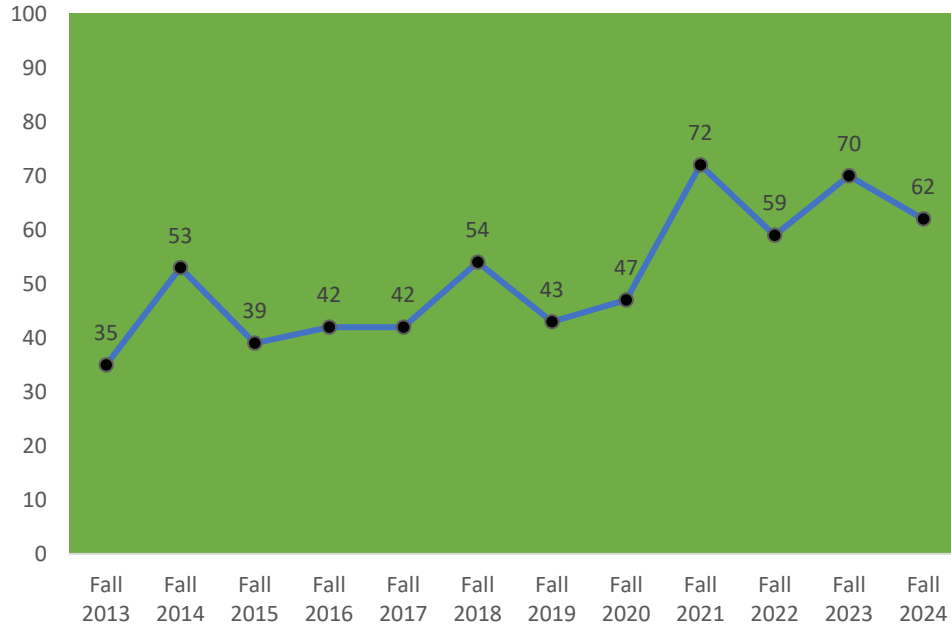
**Fall 2024: 88% North Dakota**



DAKOTA COLLEGE AT  
BOTTINEAU

# Student Success – Outcome Measures

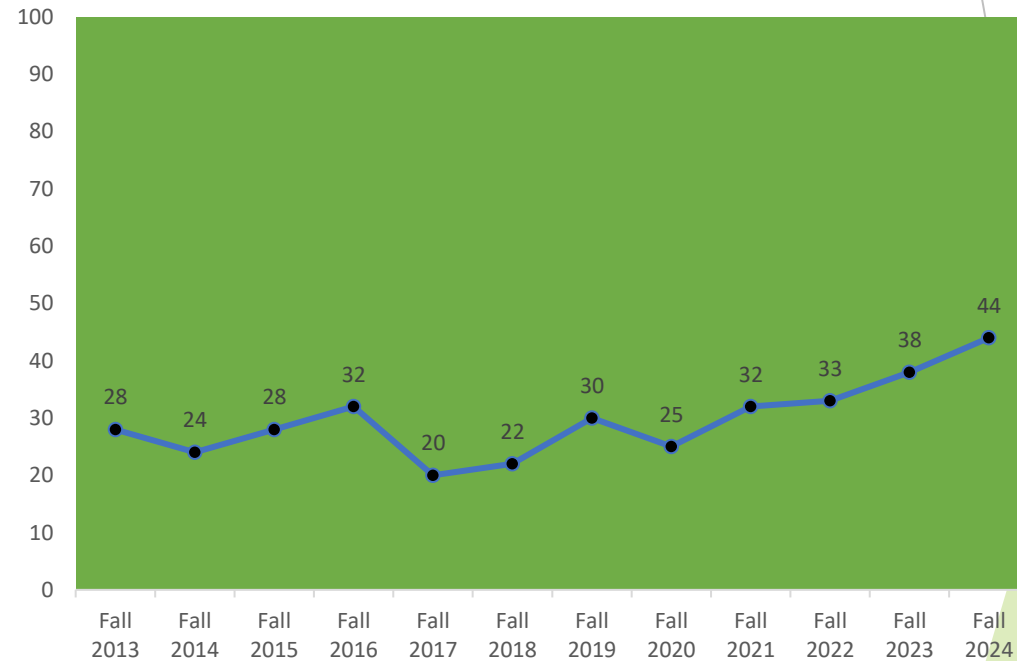
## Fall to Fall Retention Rate



► 59% Increase (Fall 2015 to Fall 2024)

**DCB: 62%**  
**National Average: 55%**

## Graduation Rate



► 57% Increase (Fall 2015 to Fall 2024)

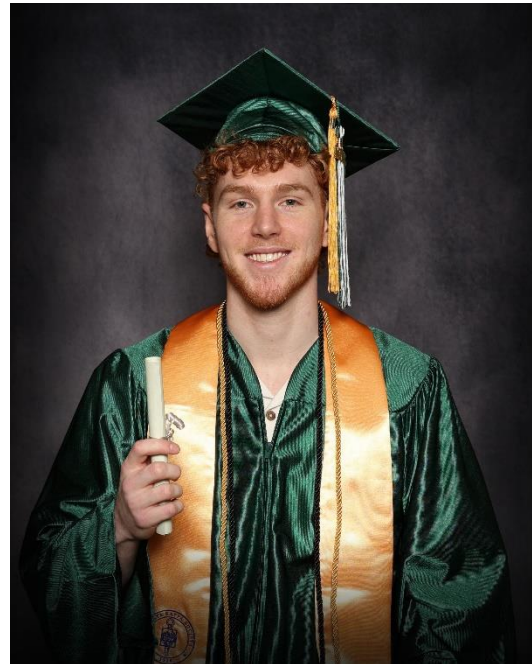
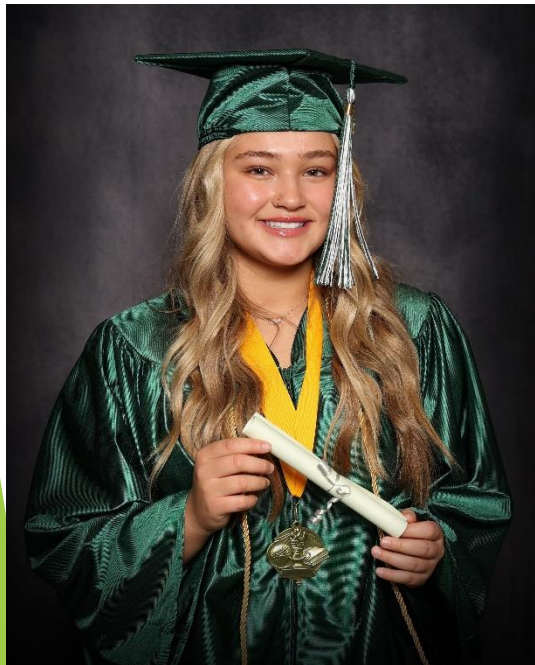
**DCB: 44%**  
**National Average: 43%**



DAKOTA COLLEGE AT  
BOTTINEAU

# Student Success – Graduation

- ▶ Graduated 203 students in 2021
- ▶ Graduated 219 students in 2022
- ▶ Graduated 200 students in 2023
- ▶ Graduated 194 students in 2024



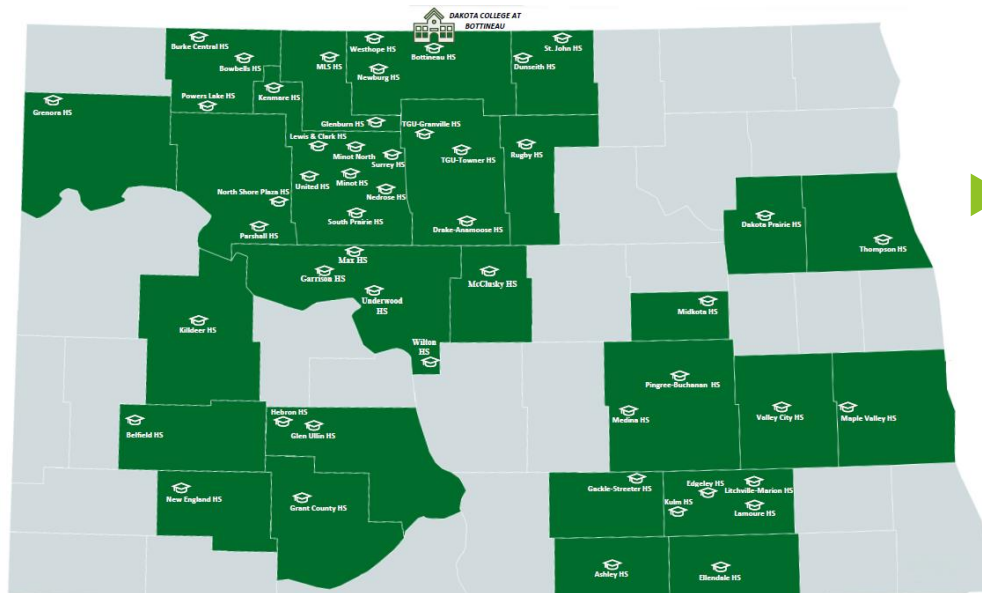
DAKOTA COLLEGE AT  
BOTTINEAU

# Community Commitment

## ► Access and Partnerships

- Online presence
- Nursing sites: Bottineau, Minot and Valley City
- Workforce / Economic Development Opportunities

## ► Dual Credit across the State



- Partner with over 50 districts
  - 94% rural, remote



DAKOTA COLLEGE AT  
BOTTINEAU

# Community Commitment – Minot

- ▶ We have *already* invested



## ▶ *Dakota College Downtown*

- ▶ Currently home to DCB Dental Assisting
  - ▶ Additional programs offered and anticipated --
    - ▶ Medical Coding, Information Technology
    - ▶ Dental Hygiene (coming in 2025)
    - ▶ and so much more ...



# Institutional Improvement – Old Main Renovation

21-23, Strategic Investment and Improvement Funds (SIIF) - \$2,500,000

23-25, Strategic Investment and Improvement Funds (SIIF) - \$3,300,000

Tier Funding Available for Capital Project - - - - - \$1,186,596

Local Capital Campaign Commitment through Foundation - - \$1,214,096

**THANK YOU!**

**TOTAL = \$8,200,692**

## Anticipated Programming:

Licensed Practical Nurse

Registered Nurse

Medical Coding

Medical Assistant

*Health Care Related  
Workforce Training*



DAKOTA COLLEGE AT  
BOTTINEAU



# Institutional Improvement – Mental Health

## ► People



*THANK YOU!*

## ► Places



## ► Projects



DAKOTA COLLEGE AT  
BOTTINEAU

# LOOKING FORWARD ...

## 2025-27 SBHE ENVISION REQUESTS



### Systemwide Initiatives:

1. Annual salary increases for employees
2. Financial aid improvements for students
3. Technology infrastructure and shared services
4. Challenge grant program
5. Consortium programming
  - ▶ *Nursing*
  - ▶ *Humanities*
6. Funding formula enhancements
7. Workforce education innovation program



DAKOTA COLLEGE AT  
BOTTINEAU



# LOOKING FORWARD ...

- ▶ Maintain Strong Financial Position
  - ▶ Focus on Shared Services and Student Enrollment
- ▶ Completed Old Main Renovation in Bottineau *THANK YOU!*
  - ▶ Increase Nursing Enrollment (LPN/RN)

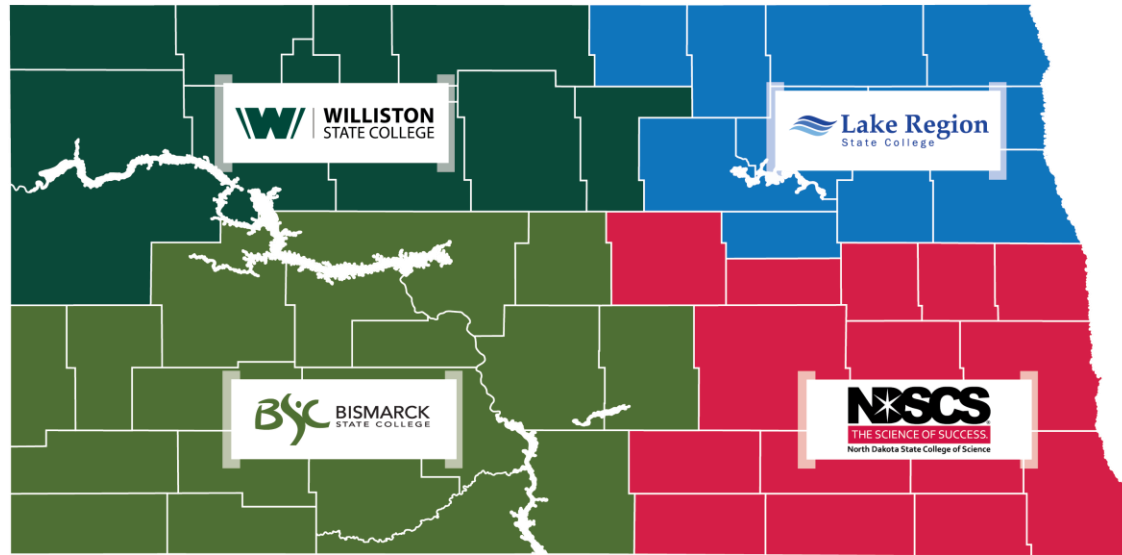


- ▶ Focus on Workforce Training in Minot *JOINT EFFORT*
- ▶ Address Student Housing in Bottineau *CRITICAL NEED*



DAKOTA COLLEGE AT  
BOTTINEAU

# Workforce Training in Minot



- ▶ *Five* Community Colleges and *Four* TrainND Regions
- ▶ **VISION:** Dakota College at Bottineau could serve Minot
- ▶ TrainND is requesting additional funds to pilot an expansion

23-25 Biennium: \$2.5 Million (appropriated)

25-27 Biennium: \$4.1 Million (requested)

*Department of Career and Technical Education Budget*



DAKOTA COLLEGE AT  
BOTTINEAU

# Workforce Training in Minot



- ▶ **VISION:** Regional Health Sciences Institute
  - ▶ Trinity Health Center West Acquisition
    - ▶ Currently - the leased home to DCB Nursing in Minot - NEW!
    - ▶ Additional joint programs and shared simulation center
      - ▶ Nursing, Medical Asst, Surgery Tech, Paramedic, Radiography, Sonography, Respiratory, Occupational Therapy Asst, Physical Therapy Asst, Pharmacy Tech ...

25-27 Biennium: \$13 Million (requested by Minot State and DCB)

*Supported by State Board of Higher Education*



# Long-Term Challenges

- ▶ Faculty and staff recruitment / retention
- ▶ Aging on-campus housing facilities

*THANK YOU!*



DAKOTA COLLEGE AT  
BOTTINEAU

# Critical Need – Student Housing

## ▶ Gross Hall (1961)

- ▶ Women's dormitory
- ▶ 2 community restrooms (8 showers, 8 toilets)
- ▶ 37 rooms with 74 beds

“The Good”



DAKOTA COLLEGE AT  
BOTTINEAU

# Critical Need – Student Housing

## ▶ Gross Hall (1961)

- ▶ Failing infrastructure
- ▶ Sewer lines back up frequently
- ▶ Original windows and fixtures

“The Good”



DAKOTA COLLEGE AT  
BOTTINEAU

# Critical Need – Student Housing

## ▶ Mead Hall (1959)

- ▶ Men's dormitory (community restrooms)
- ▶ Not wheelchair accessible
- ▶ 56 rooms with 112 beds

“The Bad”



Mead



DAKOTA COLLEGE AT  
BOTTINEAU

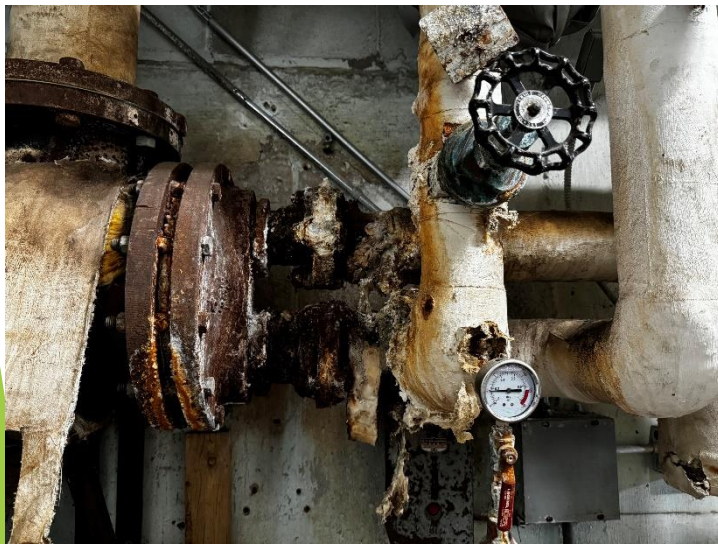
# Critical Need – Student Housing

- ▶ Mead Hall (1959)
  - ▶ Failing infrastructure
  - ▶ Heat registers and plumbing at end-of-life
  - ▶ Original fixtures with open shower area

“The Bad”



Mead



DAKOTA COLLEGE AT  
BOTTINEAU

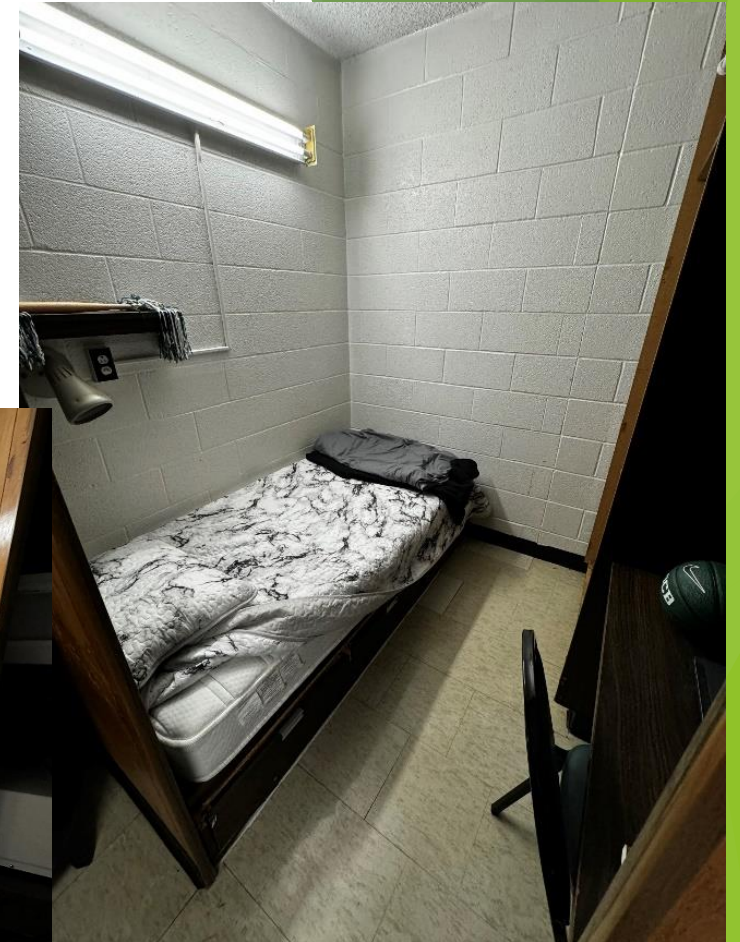


# Critical Need – Student Housing

## ▶ Milligan Hall (1971)

“The Ugly”

- ▶ Co-ed dormitory (suite style)
- ▶ 16 rooms with 62 beds
- ▶ Particle board walls and asbestos ceilings
- ▶ Not reconfigurable



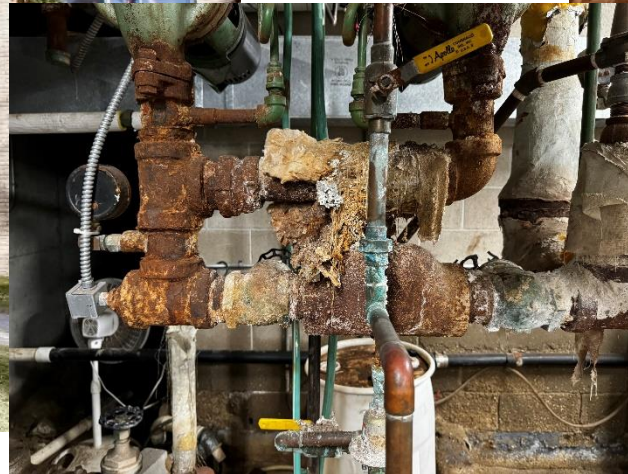
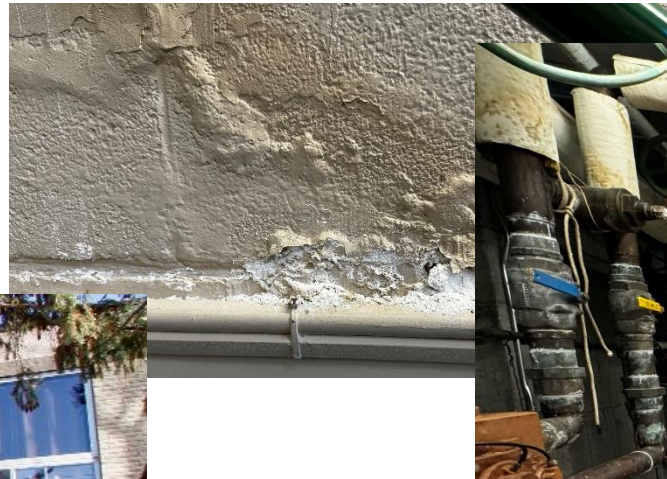
DAKOTA COLLEGE AT  
BOTTINEAU

# Critical Need – Student Housing

## ▶ Milligan Hall (1971)

- ▶ Groundwater issues; continuous sump pump
- ▶ Plumbing issues
- ▶ Alkali issues

“The Ugly”



Milligan



DAKOTA COLLEGE AT  
BOTTINEAU

# Modernizing the Living and Learning Environment for Dakota College at Bottineau Students

*Critical Need*

Building Demolition to Clear Footprint	\$875,000
Design Costs	\$1,583,000
Construction and Inspections	\$21,570,000
Contingency and Escalation	\$3,757,000
IT Infrastructure and FFE	\$1,590,000
Final Abatement, Demolition, and Disposal	\$425,000
<b>Project Total</b>	<b>\$29,800,000***</b>

**\*\*\*Updated November 2024**



DAKOTA COLLEGE AT  
BOTTINEAU

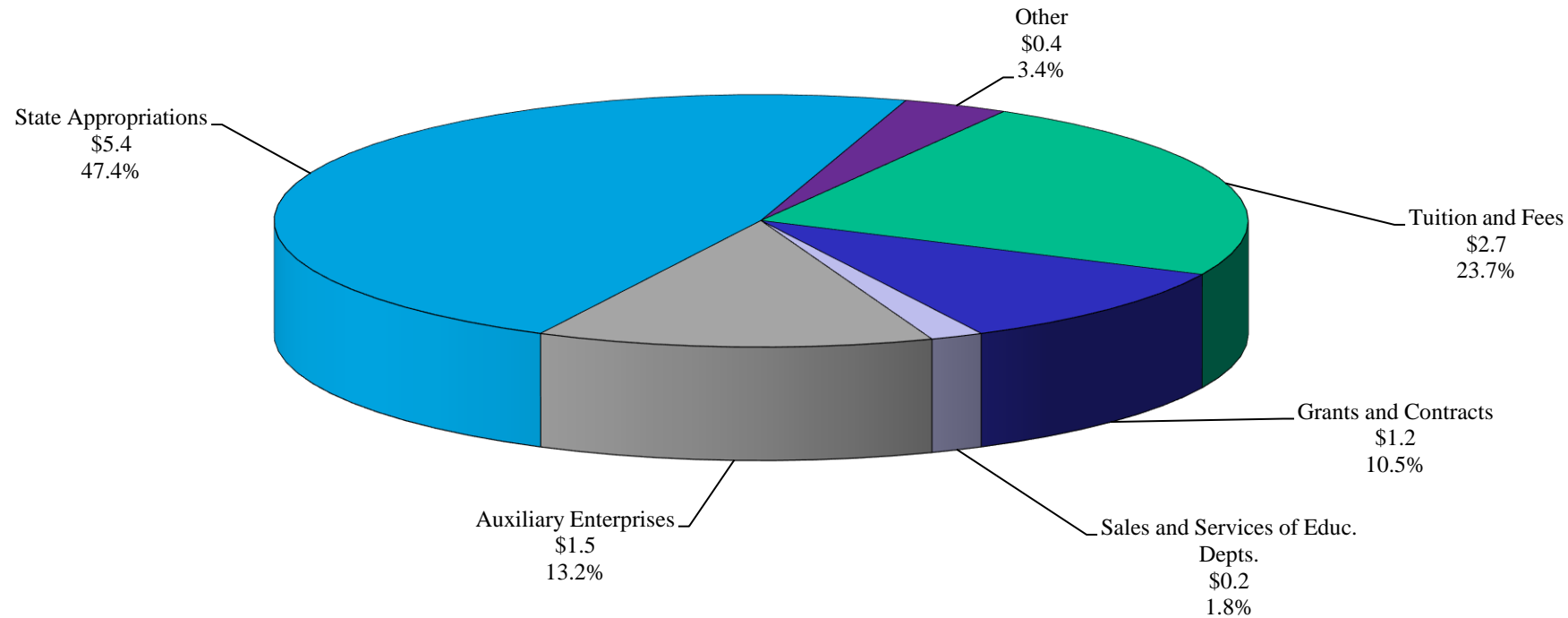
# Budget Challenges

- ▶ Housing revenue is used to support institutional budget
- ▶ No off-campus options for students



DAKOTA COLLEGE AT  
BOTTINEAU

**Dakota College of Bottineau**  
**Total Revenue, Excluding Capital**  
**Fiscal Year 2024**  
(\$ in millions)  
**Total Revenue \$11.4 million**

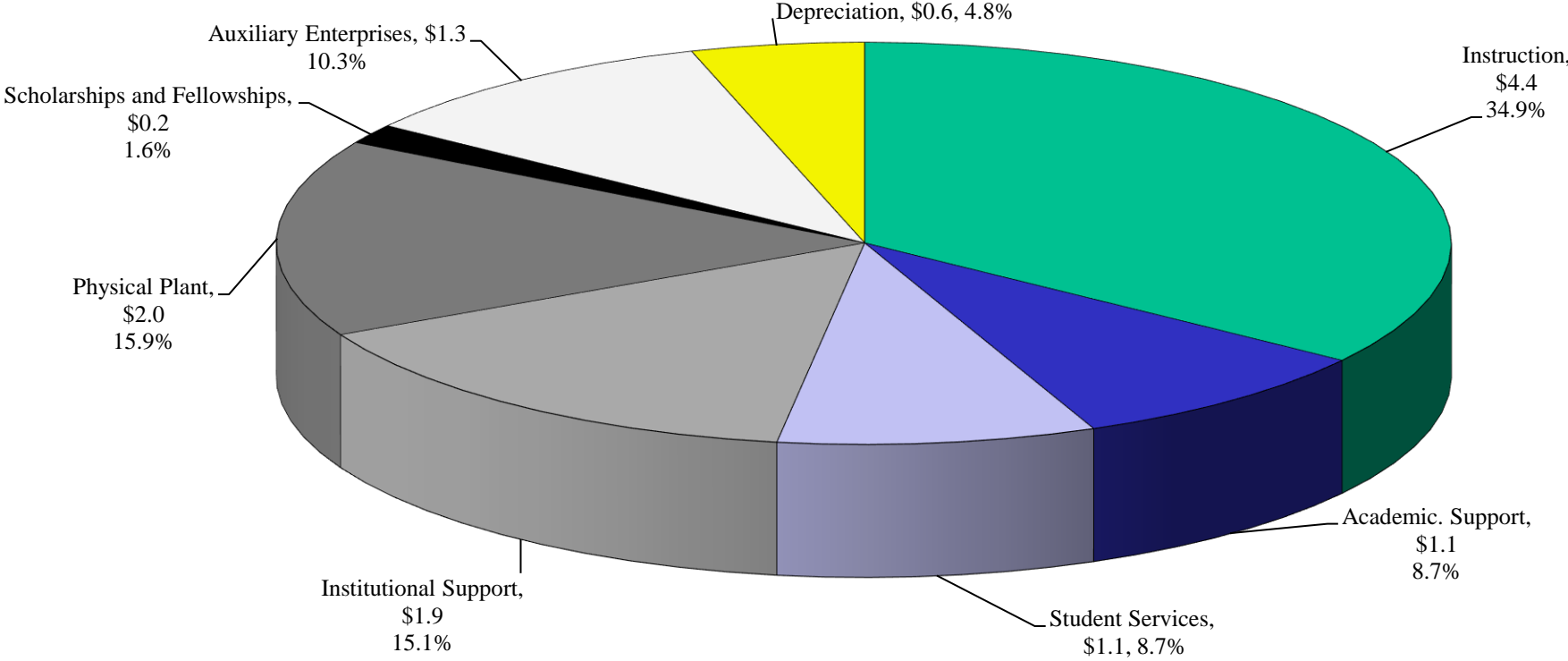


Source: Audited NDUS Financial Statements, June 30, 2024



DAKOTA COLLEGE AT  
**BOTTINEAU**

**Dakota College of Bottineau**  
**Operating Expenses by Function**  
(excluding capital items and other nonoperating expenses)  
**Fiscal Year 2024**  
(in millions)  
**Total Operating Expenses: \$12.6 million**



Source: Audited NDUS Financial Statements, June 30, 2024



# Audit Results for two-year period ended June 30, 2022

FINDING  
2022-01

Improper Verification for Veteran  
Dependent Tuition Waivers

FINDING  
2022-02

Not Following State  
Procurement Rules

FINDING  
2022-03

Inadequate Journal  
Entry Approval

*Institutional Processes  
Have Been Reviewed*

Full Report Available Online

(<https://www.nd.gov/auditor/dakota-college-bottineau>)



DAKOTA COLLEGE AT  
BOTTINEAU

# Comparison: SBHE Needs-Based Request and Executive Recommendation

## Dakota College at Bottineau

### Comparison of 2023-25 Base Budget

### to 2025-27 SBHE Request and Gov. Armstrong Executive Recommendation

	2023-25 Base Level	Requested Adjustments	2025-27 SBHE Needs-Based Budget	Gov. Armstrong Executive Recommendation	Difference from 2023-25 Base Level	Difference from SBHE Needs-Based Budget
Campus Operations	\$ 11,016,271	\$ 702,020	\$ 11,832,298	\$ 12,063,290	\$ 1,047,019	\$ 230,992
Capital Assets	\$ 114,007	\$ 875,000	\$ 989,007	\$ 114,007	\$ -	\$ (875,000)
<b>Total Appropriation</b>	<b>\$ 11,130,278</b>	<b>\$ 1,577,020</b>	<b>\$ 12,821,305</b>	<b>\$ 12,177,297</b>	<b>\$ 1,047,019</b>	<b>\$ (644,008)</b>
General Fund	\$ 11,130,278	\$ 1,577,020	\$ 12,707,298	\$ 12,177,297	\$ 1,047,019	\$ (530,001)
Special Funds	\$ 14,850,947	\$ 49,323	\$ 14,900,270	\$ 15,456,034	\$ 605,087	\$ 555,764
<b>Total Funding Sources</b>	<b>\$ 25,981,225</b>	<b>\$ 1,626,343</b>	<b>\$ 27,607,568</b>	<b>\$ 27,633,331</b>	<b>\$ 1,652,106</b>	<b>\$ 25,763</b>





# BIENNIAL BUDGET REQUEST

**2023-2025 Base Budget**  
(Operating plus Extraordinary Repairs)

**\$11,130,278**

### Adjustments

Projected Funding Formula Increase	\$41,944
IT Rate Adjustment	\$2,846
Employer Retirement Contribution	\$8,526
Continuation of Salary Equity Adjustments	\$304,074
Requested Budget Reduction (3%)	(\$344,630)

### Systemwide Requests

Restore Budget Reduction (3%)	\$344,630
Inflation Factor Increase	\$344,630

**2025-2027 Base Budget Request**

**\$11,832,298**

Capital Project (Residence Hall Demolition)	\$875,000
---	-----------

## ADDITIONAL CONSIDERATIONS

Workforce Training Expansion	\$1,600,000****
Joint Capital Project (Trinity Health Center West Acquisition)	\$13,000,000****
Project Completion (Residence Hall Construction)	\$28,925,000****



DAKOTA COLLEGE AT  
**BOTTINEAU**

# Dakota College at Bottineau

## ***VISION:***

to adapt to the changing educational landscape to  
***EMPOWER STUDENTS*** and ***IMPACT COMMUNITIES***

***THANK YOU*** FOR YOUR ONGOING SUPPORT



DAKOTA COLLEGE AT  
BOTTINEAU