

North Dakota Senate **APPROPRIATIONS COMMITTEE**

BISMARCK STATE COLLEGE | NORTH DAKOTA'S POLYTECHNIC INSTITUTION

Brent Sanford, BSC President
February 5, 2025

2025-2027

BISMARCK STATE COLLEGE

CHALLENGES & REQUESTS

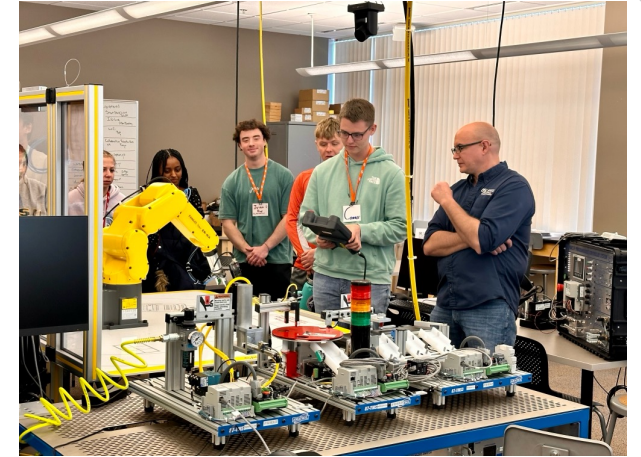
GROWTH

FUNDING FORMULA

PROGRAM STARTUP

STUDENT HOUSING

HEALTHCARE EDUCATION SPACE



2025-2027 >>> CHALLENGE

GROWTH SINCE LAST BIENNIUM

- >>> Up 15.72% in headcount
- >>> Up 14.46% in credit hours
- >>> Up 14% in ND & ND military students

ENROLLMENT MILESTONES

- >>> Meeting our 5-yr enrollment goal 2 years early
- >>> Spring 2025: 6th consecutive semester of growth
- >>> **Spring 2025: Highest enrollment in BSC history**



2025-2027 >>> CHALLENGE

ENROLLMENT GROWTH

2017-2027 BSC Census Credit Hours

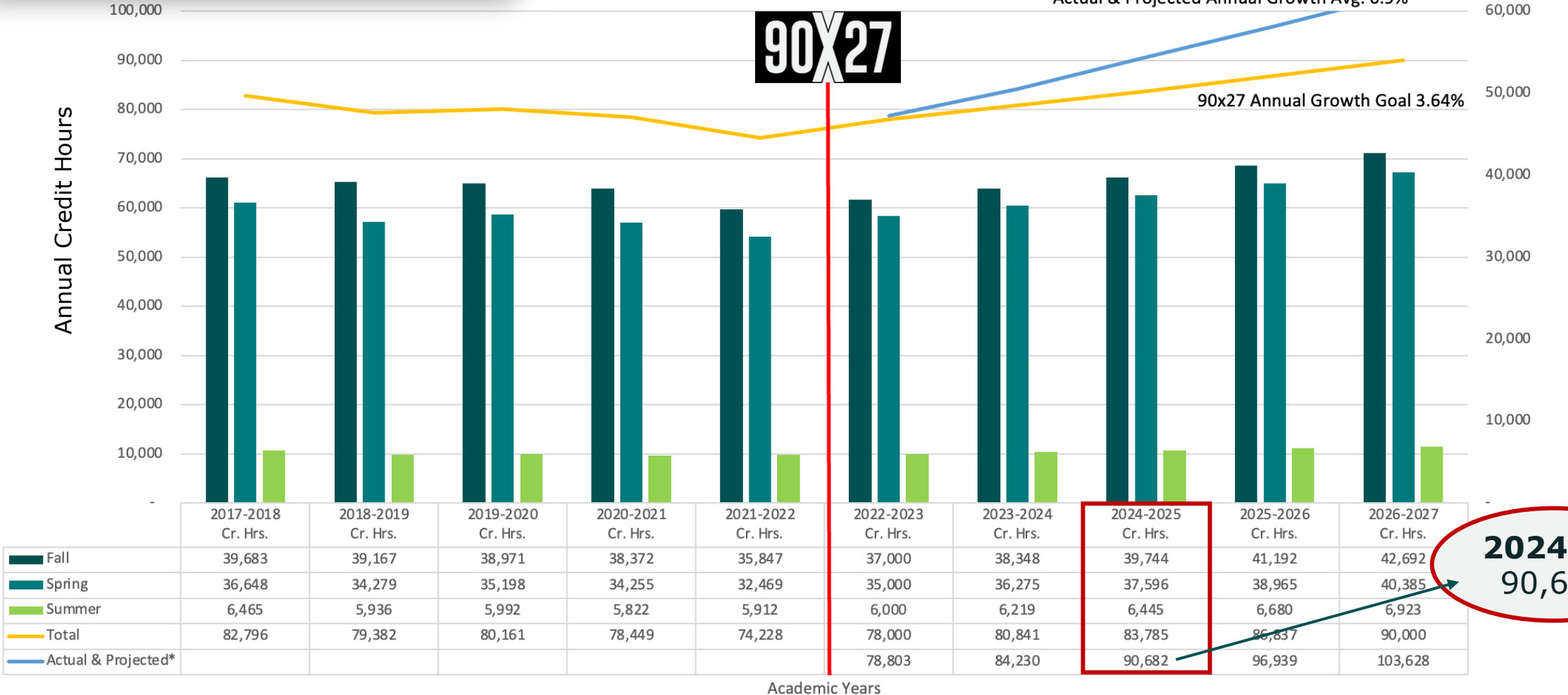
Actual & Projected Annual Growth Avg. 6.9%

90x27

90x27 Annual Growth Goal 3.64%

Annual Credit Hours

Semester Credit Hours



2024-25
90,682

Academic Years

2025-2027 >>> CHALLENGE

CURRENT FUNDING FORMULA

>>> 3rd largest institution

>>> 5th in appropriations

>>> 10th in state funding per student per semester

>>> **BSC: \$3,790**

Other community colleges and regional universities: \$4,827 to \$7,104

INSTITUTION	2023-25 Final Base Funding	Equity General Fund	Employer Retirement Increase General Fund	TOTAL	FTE Student Count (2022 Fall Enrollment Report)	State Support per Student per Semester (Assumes Fall & Spring Semesters for 2 years) (SB2164) (2019)
BSC	36,354,055	996,414	31,441	37,381,910	2,466	3,790
DCB	11,130,278	304,074	8,526	11,442,878	550	5,201
LRSC	15,073,051	411,788	14,693	15,499,532	797	4,862
NDSCS	38,761,924	1,049,248	43,662	39,854,834	2,064	4,827
WSC	13,118,332	358,386	8,607	13,485,325	646	5,219
DSU	23,801,610	623,324	15,061	24,439,995	1,155	5,290
MASU	21,698,810	568,255	11,331	22,278,396	784	7,104
MISU	47,677,097	1,256,166	31,980	48,965,243	2,167	5,649
VCSU **	27,612,092	723,115	14,606	28,349,813	1,073	6,605
NDSU	154,844,139	4,250,375	97,772	159,192,286	10,701	3,719
UND	176,704,163	4,850,392	100,821	181,655,376	9,418	4,822
UND SMHS	70,189,742	1,926,476	38,691	72,154,909	1,342	15,431
UND SMHS-I	10,676,150			10,676,150		
TOTALS	647,641,445	17,318,013				

2025-2027 >>> REQUEST

FUNDING FORMULA CHANGE FOR ENERGY

- >>> The Energy sector is one of ND's largest economic generators
 - Oil and gas industry accounted for more than \$42.6 billion in gross business volume, nearly 50,000 jobs, and \$3.8 billion in state and local tax revenues in 2021 (*Source: Gov. Doug Burgum*)
- >>> Funding needed for Energy programs to address workforce shortage
- >>> **All** Energy programs should be weighted as career/technical for funding
 - Interim Higher Ed Committee approved wind energy to be weighted as career/technical*
 - All other Energy programs are currently weighted as engineering

**Senate Bill 2034*

2025-2027 >>> CHALLENGE

NEW PROGRAM EXPENSES



High-cost technical programs are too expensive to fund on tuition alone



BSC receives funding for its credit hour production 4 years after those credit hours are produced – funds aren't available to address the expenses involved in starting up high-priority occupation programs



ACCOMPLISHMENTS >>> PROGRAM GROWTH

since the ND 68th Legislative Assembly

HEAVY EQUIPMENT OPERATOR **Insurance**

SECURITY OPERATIONS

ELECTRICIAN TECHNICIAN

Digital Forensics & Incident Response

Web Programming Foundations

Arts Entrepreneurship & Management

Secure Web Programming

Business End User Security

Automation **DENTAL CAREER EXPLORATION**

IT and Cybersecurity Governance

Software Analysis

BUSINESS FUNDAMENTALS

Applied Communication

COMPUTER APPLICATIONS

Geospatial Technology

Land Surveying Technology

Foundations in Emerging Technologies

Additive Manufacturing

DIALYSIS TECHNICIAN

Medical Assistant

Arts Business

Artificial Intelligence & Machine Learning Specialist

HEALTH

APPLIED ARTS

Civil Engineering Technology

ADMINISTRATION

UNMANNED AERIAL SYSTEMS **Dental Hygiene**

DENTAL ASSISTING

{**EXERCISE AND SPORTS STUDIES**

INTELLIGENT MACHINE LEARNING}

UNIVERSITY STUDIES

Pending HLC Approval

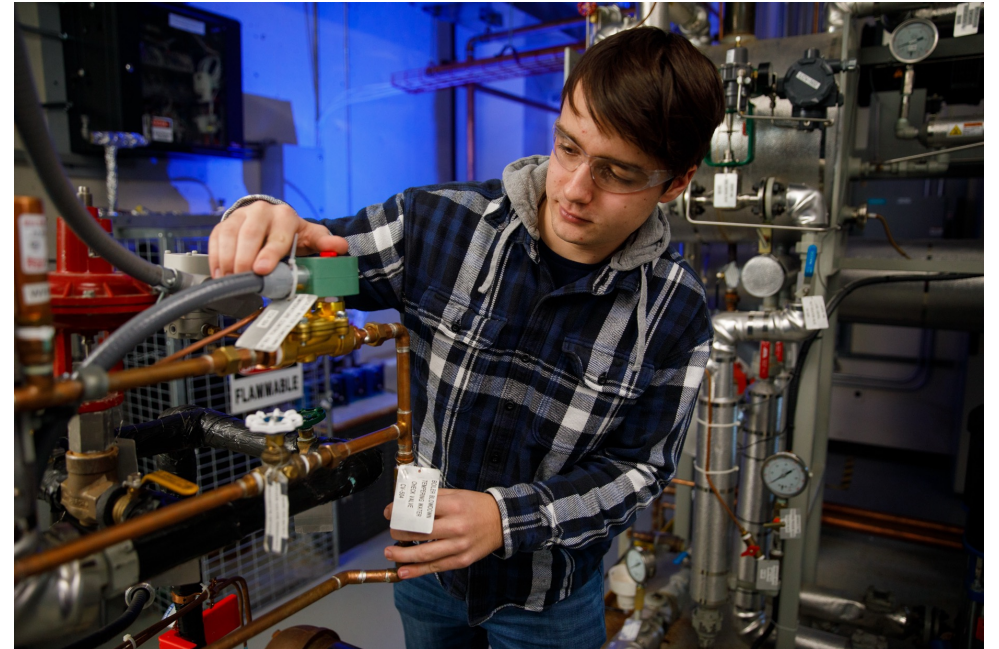
2025-2027 >>> REQUEST

\$5M FOR PROGRAM STARTUP FUNDING



Start-up funding is needed for new workforce programs and equipment in high-demand, high-priority occupations due to the 4-yr lag in reimbursement

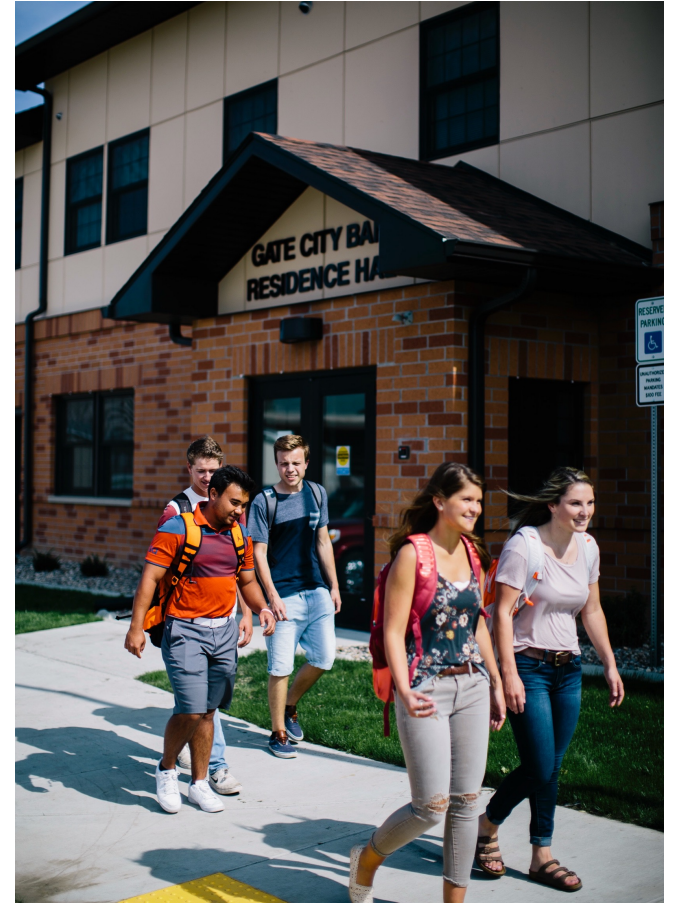
- High-tech equipment
- Program/curriculum development
- Instructional staff
- Recruitment and retention
- Student support services



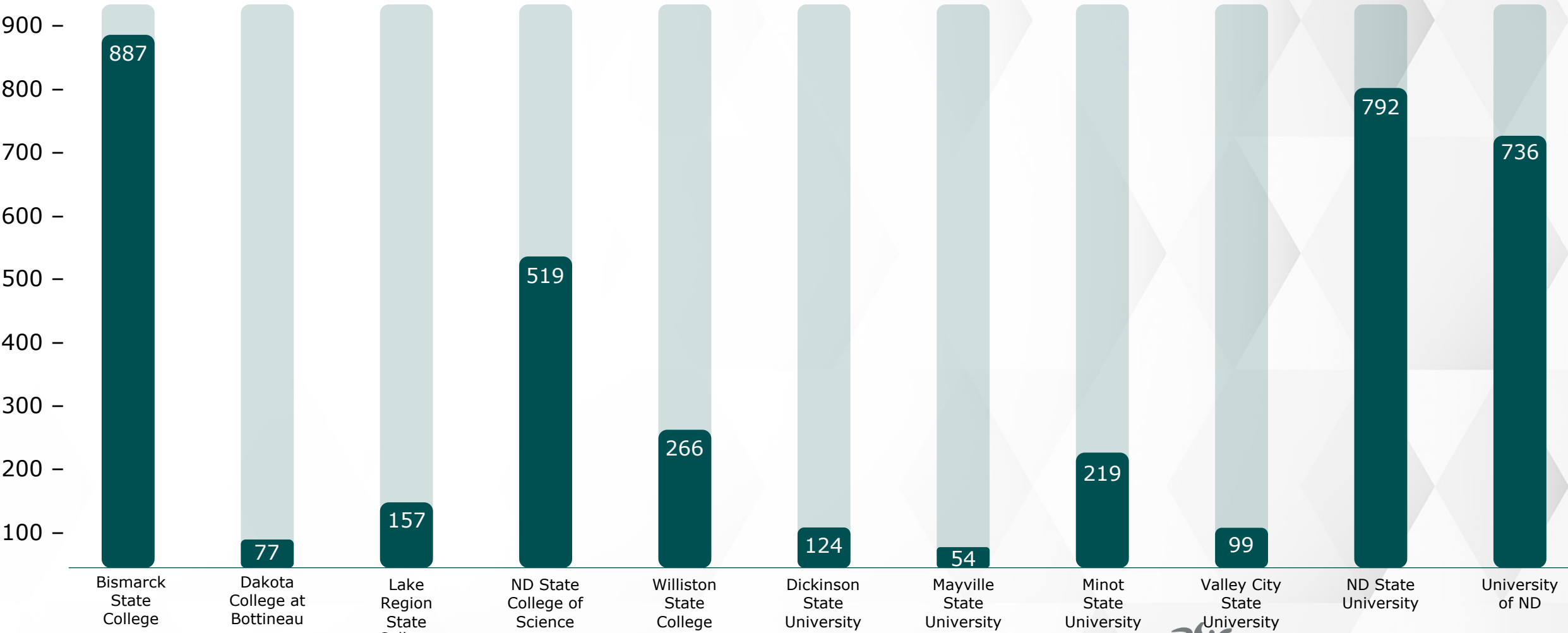
2025-2027 >>> CHALLENGE

CRITICAL STUDENT HOUSING SHORTAGE

- >>> BSC needs to expand housing to support growing enrollment, student opportunities and workforce needs
- >>> Costs students \$3,084/yr more to live off campus
 - \$5,133 on campus vs. \$8,217 off campus (*Per HUD*)
- >>> Fall 2024: 524 housing applications and 54 students on a waitlist after increasing capacity from 448 beds to 470 (*within fire code*)
- >>> BSC has the largest number of traditional-age freshmen from ND – 887 students in fall 2024



FALL 24 ND TRADITIONAL FRESHMEN



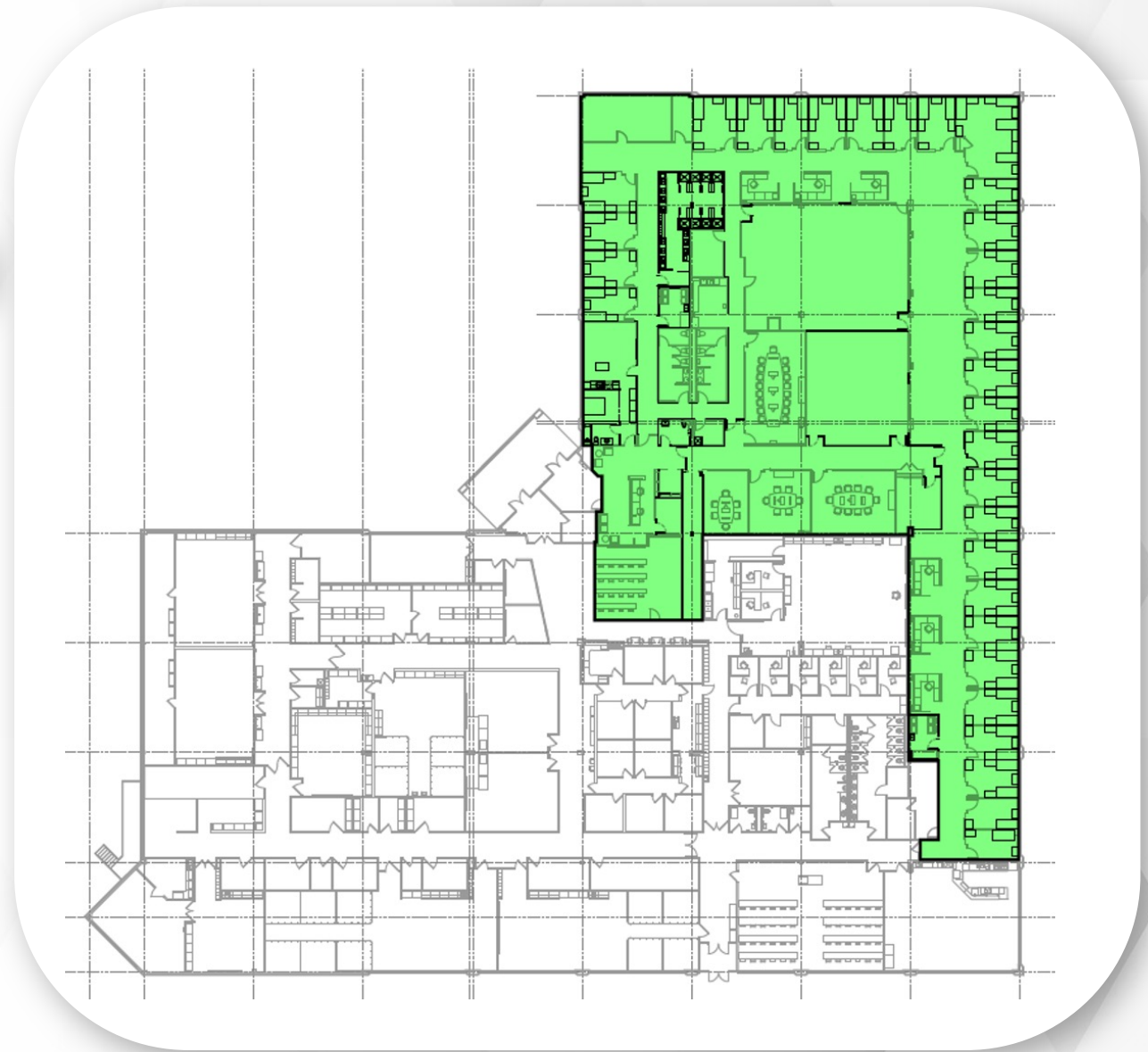
2025-2027 >>> REQUEST

\$1.4M BUILDING REMODEL

>>> Transforms 21,344 sq. ft. of previously-leased office space into a resident hall

>>> Only requires minor changes to convert 34 offices to residence hall rooms to accommodate 62 students

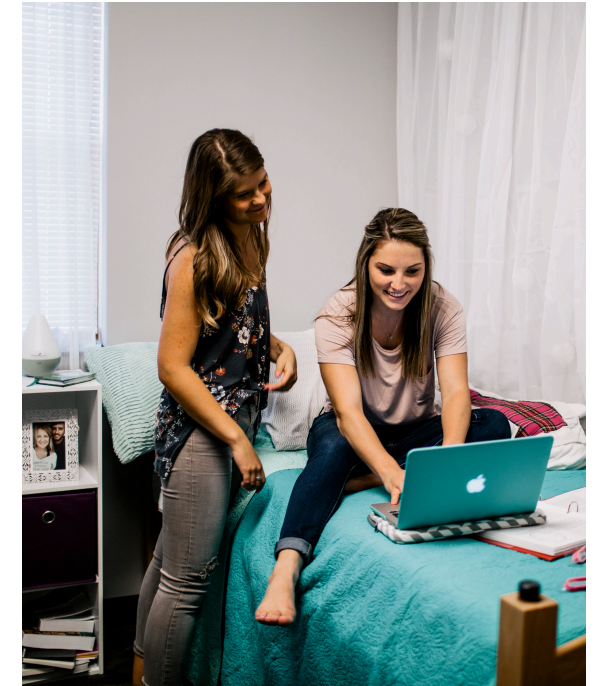
>>> Only minimal construction is needed to bring the existing building wing to code for a resident hall



2025-2027 >>> REQUEST

\$1.4M BUILDING REMODEL

- >>> Shower and laundry amenities can be converted from existing storage and restroom facilities
- >>> HVAC, plumbing, fire protection and electrical only require minor modifications for the new use
- >>> No site work improvements are necessary
- >>> Authorization is needed to utilize \$1.4M in existing state-tier funding
- >>> BSC supports HB1128 to create a Higher Ed Infrastructure Revolving Loan Fund



2025-2027 >>> CHALLENGE

HEALTHCARE EDUCATION SPACE AT CAPACITY



Healthcare industry has the highest number of open jobs in ND – LPN, RN and Nursing Assistants are in the top 10 high-demand jobs in ND



Projected shortage nearly 1,000 RNs in the next 5 years



The demand for BSC graduates from healthcare programs exceeds the current facility's instructional space capacity



2025-2027 >>> CHALLENGE

HEALTHCARE EDUCATION SPACE AT CAPACITY

- >>> Substantial growth in applications for healthcare programs
- >>> Fall 2024:
 - LPN (Nursing) – 129 applications – up 31%
 - Diagnostic Medical Sonography – 40 applications – up 100%
 - Paramedic Technologies and Medical Lab Technician 3 yrs at full capacity
- >>> BSC has maximized its current footprint, using storage spaces as makeshift classrooms and labs for Emergency Medical Services
- >>> New programs – Medical Assistant and Dialysis Technician – have been relocated across campus due to space restraints

2025-2027 >>> REQUEST

\$43M EXPANSION OF HEALTH SCIENCES BUILDING

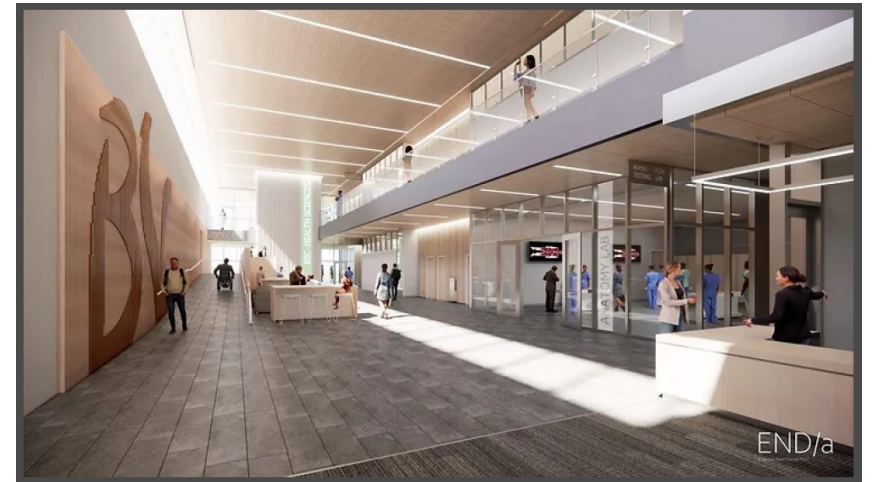
- >>> 62,000 sq. ft. expansion to accommodate new healthcare programs, students and equipment
- >>> Allows for additional state-of-the-art experiential learning environments for new and current healthcare programs
- >>> Expands academic spaces to cater to disciplines such as respiratory therapy, nursing, radiology, dialysis, exercise and sports studies, biomedical, anatomy, and an educational walk-in clinic



2025-2027 >>> REQUEST

\$43M EXPANSION OF HEALTH SCIENCES BUILDING

- >>> Eliminates deferred maintenance costs as they will be included in the expansion – roof replacement, parking lot resurfacing, etc.
- >>> Flexible design incorporates adaptable spaces that can be easily repurposed to accommodate department/program needs
- >>> All health science programs would be located in the same building to allow for seamless integration between disciplines



2025-2027 >>> REQUEST

\$43M EXPANSION OF HEALTH SCIENCES BUILDING

>>> New apprenticeship initiative at BSC will speed the completion number of graduates to fill jobs demands, but space limitations are hindering the ability to fulfill this mission effectively

>>> Expansion plan developed in collaboration with private sector in response to the growing demand for healthcare workers

- Approx 50 medical/dental providers requesting and/or supporting a BSC expansion of programs



THANK YOU

BISMARCK STATE COLLEGE | NORTH DAKOTA'S POLYTECHNIC INSTITUTION