



HB 1012 Senate Appropriations Committee – HR Division

Chair, Senator Dick Dever

Holly Triska-Dally | Office of Refugee Services

March 21, 2025

NORTH
Dakota
Be Legendary.

| Health & Human Services

North Dakota's History of Welcoming

- ND Population 1890: 190,983
- ND Population 1920: 646,872

By 1915, 79% of all North Dakotans were immigrants or the children of immigrants.



Today 38,355 immigrants live in North Dakota
Comprising **5% of the population** but **6.2% of the labor force**
Since 2020, immigrants made up **50% of ND employment growth**

Our Mission

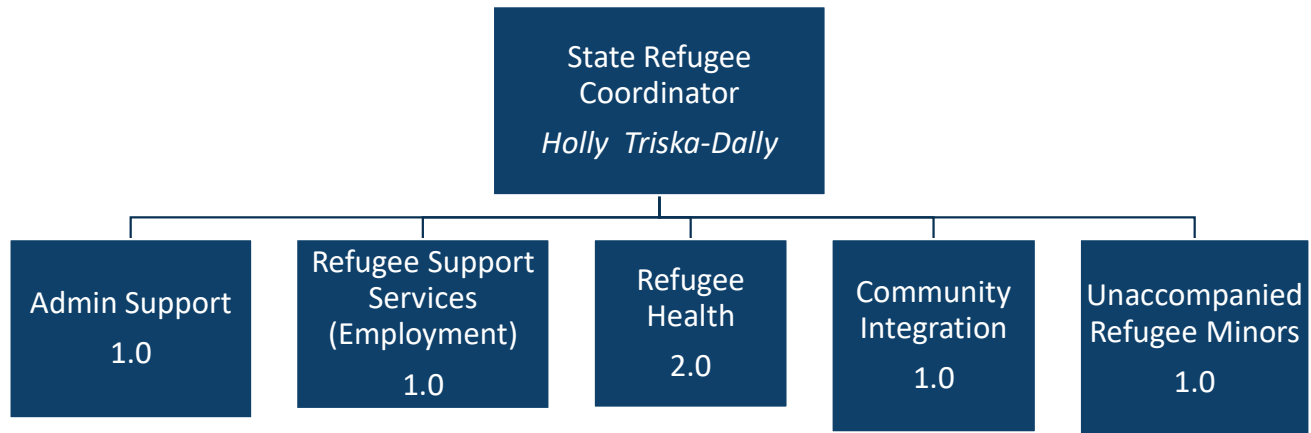
To create community collaborations that strengthen and guide newcomers as they become welcomed neighbors and valued contributors to the economy.

Chapter	Chapter Name
50-06-01.4	Structure of the Department a. Administration of programs for children and families, including refugee services



Refugee Services

Office of Deputy Commissioner/Refugee Services			
23-25 FTE	25-27 FTE Requested	# of Temporary	# of Vacancies
7	7	1	0



The Legal Process for Refugee Resettlement



Overseas Vetting

- 8 Government Agencies
- 6 Background checks
- 3 in-person interviews



U.S. Placement

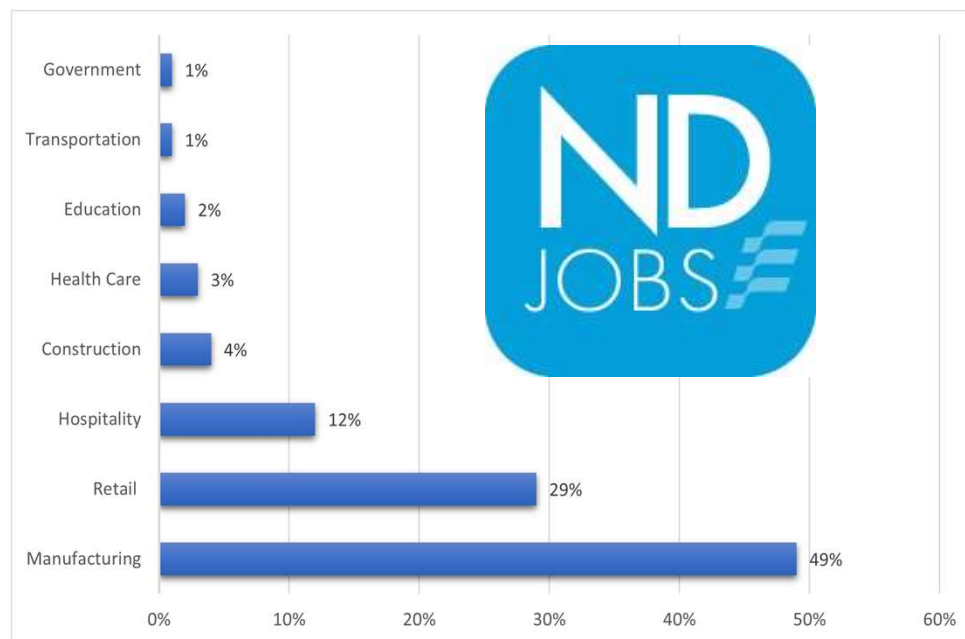
- 10 Resettlement Agencies
- Initial 90 days in the U.S.
- Cultural Orientation



Long-term Success

- Employment Assistance
- English Language Learning
- Community Integration

Connecting to Employment



New American Employment Program North Dakota Job Service Centers

- 636 Employable Adults
- Average time to employment: 90 days
- Average wage: \$18.53

Removing Barriers to Employment



English Learning

Adult Learning Centers

- Remote Classes
- Mom and Me Classes
- Workforce-based English

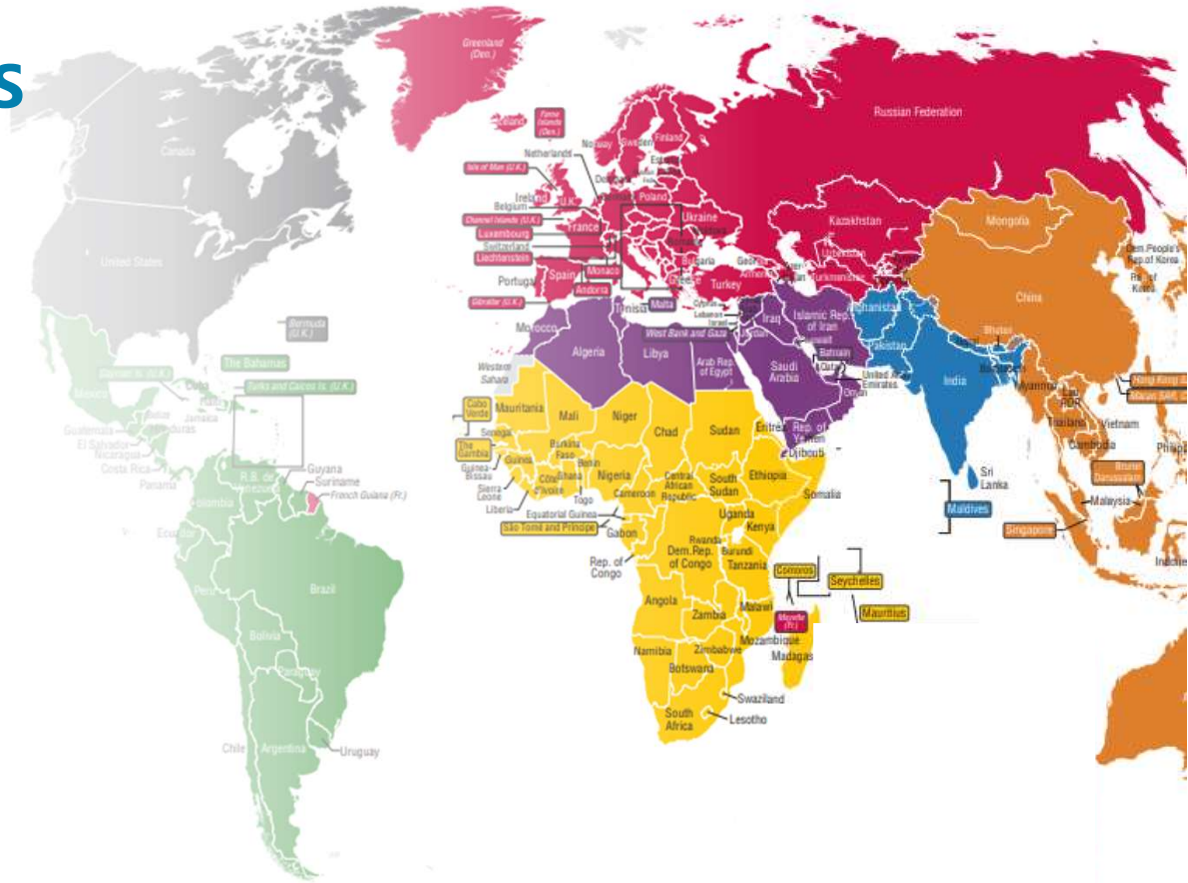
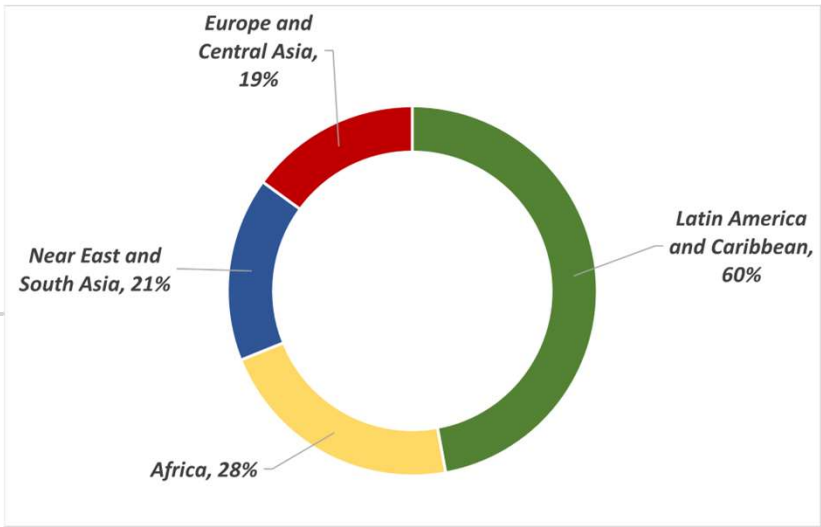


Community Integration

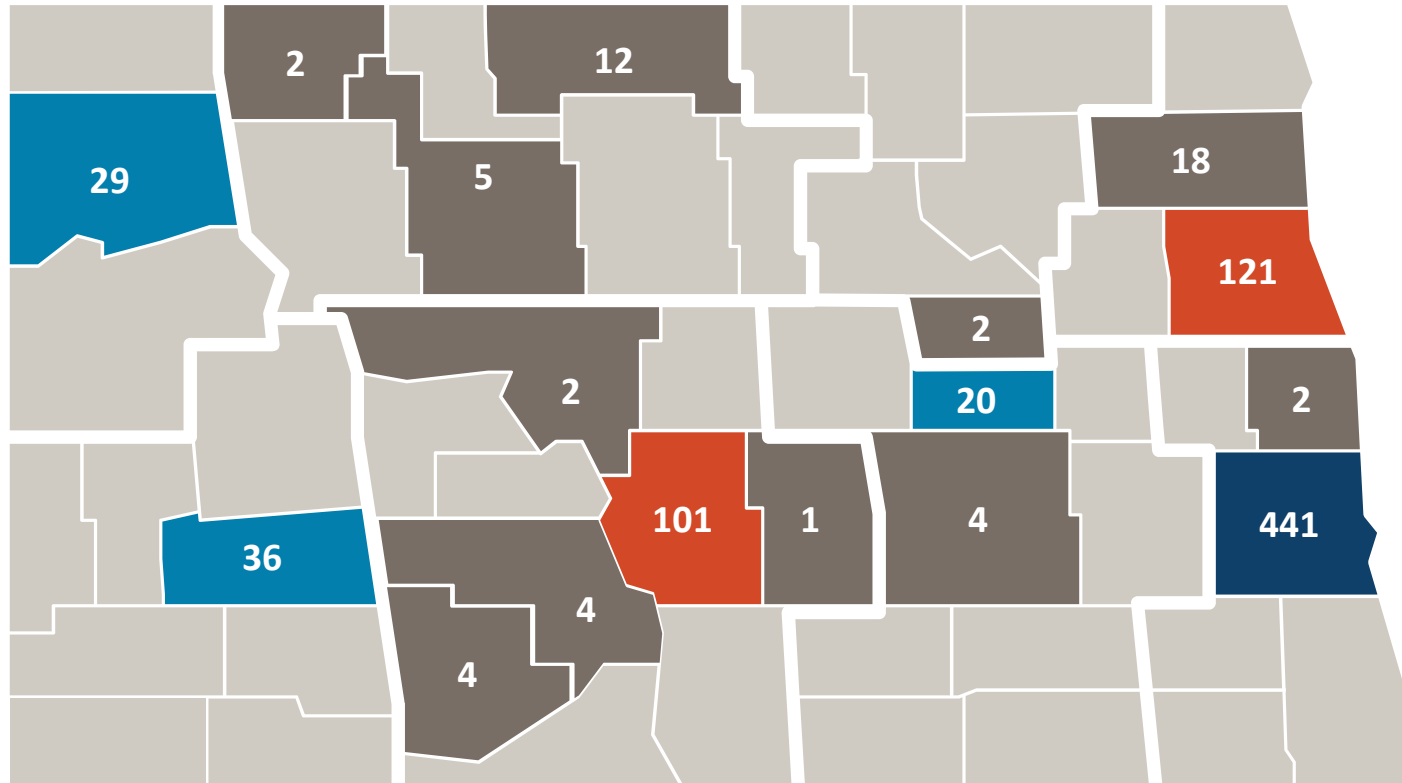
City Governments

- Community Awareness
- Partnership Building
- Citywide Solutions

NORTH DAKOTA ARRIVALS BY WORLD REGION



2024 North Dakota Arrivals by County



LEGEND

- Over 200
- 76-199
- 20-75
- 1-19

804 Statewide Arrivals

45% outside of Cass County

Refugee Services: 2023-2025 Successes

- Improved assessments and outcome measurement

Launch of the Data Management System

- Improved access to English Language Learning

Launch of Virtual ELL Program

- Expanded community-based and employment sector relationships

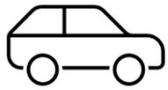
Partnered with over 30 organizations in 10 communities, investing \$3.5M in 2024

- Enhanced focus on behavioral health services

Partnered with the Behavioral Health Division to establish 8 wellbeing groups to improve health outcomes.



2025-2027 Biennium Goals



Transportation Solutions

- Public Transport
- Driver's Training
- Car Ownership



Digital Literacy

- Communication
- Job Search
- Virtual Learning



English Language

- Post employment
- Terminology classes
- CTE Readiness

Changes to Base Budget

By Ongoing, One-Time and Funding Source

BASE BUDGET CHANGES	DESCRIPTION	2025-27 EXECUTIVE BUDGET		ENGROSSED HB 1012	
		GENERAL	OTHER	GENERAL	OTHER
NA					

Comparison of budgets and funding

By Major Expense

DESCRIPTION	2023-25 LEGISLATIVE BASE	INCREASE / (DECREASE)	2025-27 EXECUTIVE BUDGET RECOMMENDATION	INCREASE / (DECREASE)	ENGROSSED HB 1012
Salaries & Benefits	\$ 853,662	\$ 859,175	\$ 1,712,837	\$ -	\$ 1,712,837
Operating	565,731	1,977,410	2,543,141	-	2,543,141
IT Services	6,300	37,170	43,470	-	43,470
Grants	11,208,976	7,468,820	18,677,796	-	18,677,796
Total	\$ 12,634,669	\$ 10,342,575	\$ 22,977,244	\$ -	\$ 22,977,244
General Fund	\$ -	\$ -	\$ -	\$ -	\$ -
Federal Funds	12,634,669	10,342,575	22,977,244	-	22,977,244
Other Funds	-	-	-	-	-
Total Funds	\$ 12,634,669	\$ 10,342,575	\$ 22,977,244	\$ -	\$ 22,977,244

Refugee Services Budget as % of HHS Budget

- 0.4%

Budget by Funding Source

- 0% General
- 100% Federal
- 0% Other

Budget by Pass Through

- 6.2% Paid to private providers
- 81.3% Direct Service
- 12.3% Admin
- 0.2% IT

The Economic Impact of Welcoming



2005 – 2019

Refugee tax contributions after the cost of initial government services

\$124 Billion



2022

Refugee spending power

\$82 Billion



2022

Business income from 190,000 U.S. Refugee entrepreneurs

\$6.7 Billion



Refugees: **78.2%**

U.S. Born **61.9%**



Economic Draw to North Dakota

Refugee Secondary Migration:

FFY 22

In migration: 71
Out migration: 8

FFY 23

In migration: 581
Out migration: 2

Contact Information

Holly Triska-Dally
State Refugee Coordinator
htriskadally@nd.gov

