

BRAVE before PERFECT

A Rural District's Journey to Competency -Based Learning

Northern Cass Public School District #97



Dr. Cory Steiner
Superintendent



Tom Klapp
Director of
Personalized Learning

School Demographics



OUR WHY

We believe every learner can change the world; therefore we will provide a world-class education.



Our Values

- Commit to purposefully build trust
- Develop authentic relationships
- Engage in innovative practices which will empower learners to be choice ready.



The Pillars of Personalized Learning

Assessment

Comprehensive system including standardized, educator drive, and learner generated assessments that lead to timely, relevant, and actionable evidence of learning.

Standards Based

Rigorous, common expectations for learning that are explicit, transparent, measurable, and transferable.

Agency

A learner's willingness and capacity to identify and balance when, what, why, and how s/he will learn, and who s/he will need to learn with in order to develop self-efficacy and empowerment.

Equity

Equity ensures all learners receive the support they need to be successful when they need it.

Flexible Curriculum

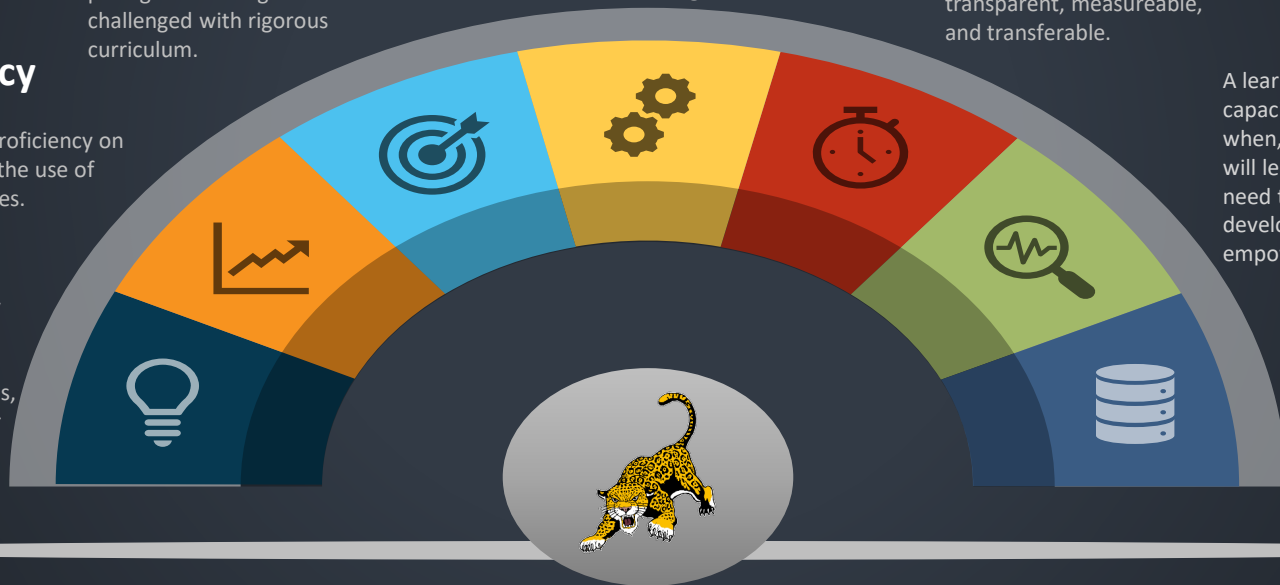
Learners utilize varied pathways and flexible pacing while being challenged with rigorous curriculum.

Proficiency

Learner progress is demonstrated by proficiency on standards through the use of clearly defined scales.

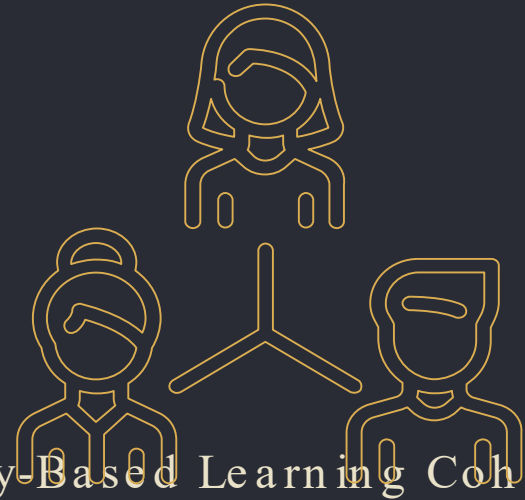
SEL

Learners acquire and apply the necessary skills to understand and manage emotions, set positive goals, feel and show empathy for others, maintain positive relationships, and make responsible choices.



Partnerships

- Schools
 - Lindsay Unified School District (California)
 - Harrisburg (South Dakota)
 - Farmington (Minnesota)
 - Marysville (Ohio)
- Organizations
 - Knowledgeworks
 - NextGen
 - Mastery Transcript Consortium
 - Transcend
 - North Dakota Personalized Competency-Based Learning Cohort



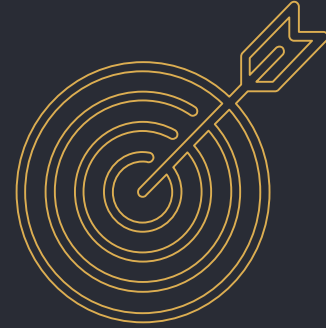
Common Language

- Educator vs. teacher
- Learner vs. student
- Learning center vs. classroom
- Learner-centered



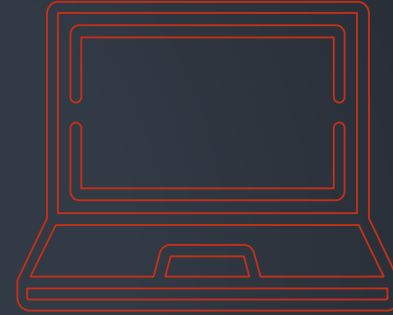
Assessment

- Proficiency Based Grading
 - Philosophy
 - Proficiency Scales
 - Evidence
 - Score '4'
- College Visits & Legislation

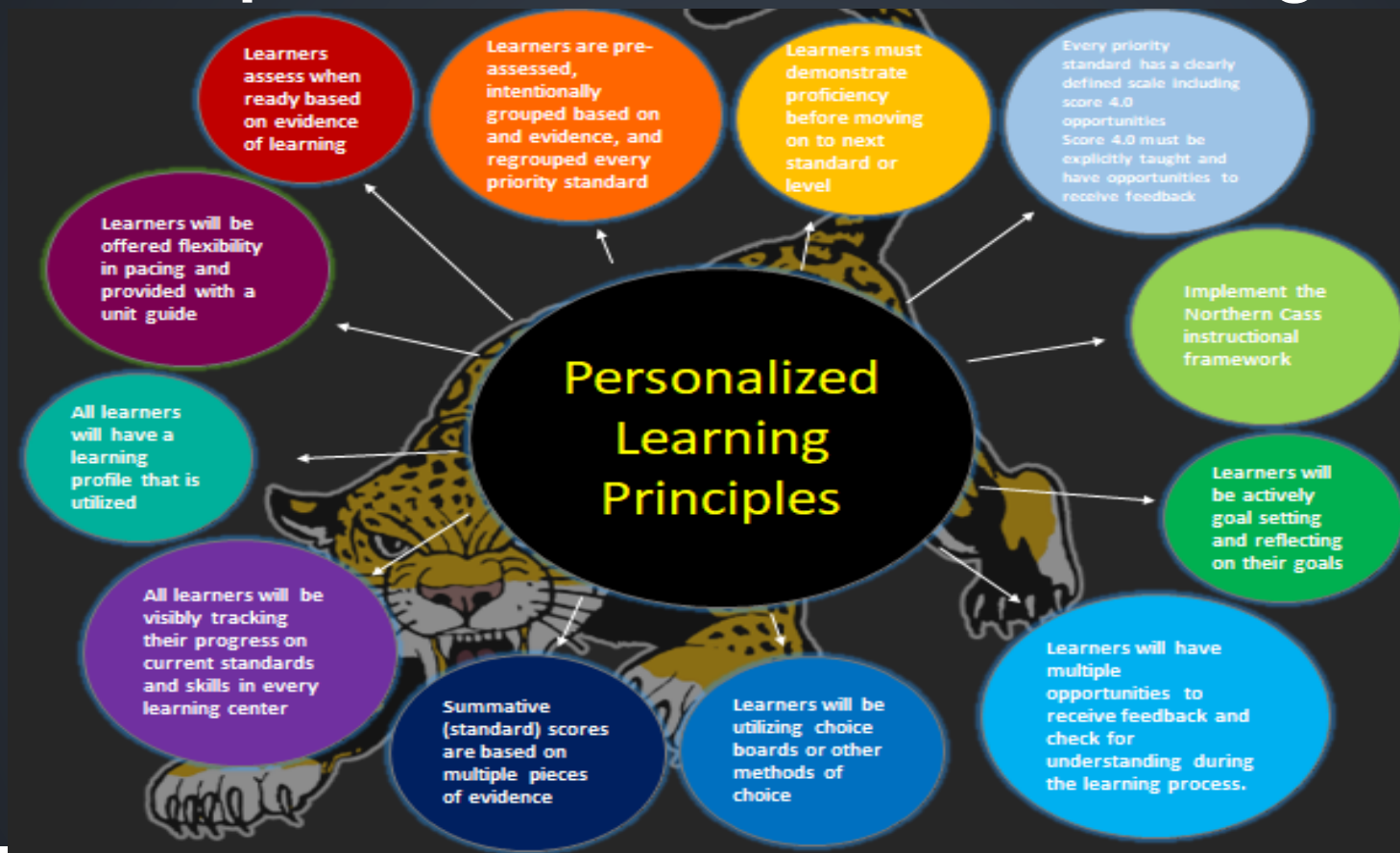


Teaching & Learning

- Stations and/or Rounds
 - Coaching
 - Conferencing
 - Collaboration
 - Independent/Reflection
 - Seminar
- Empower Learning Management System
- Learner Agency (Jaguar Ambassadors)

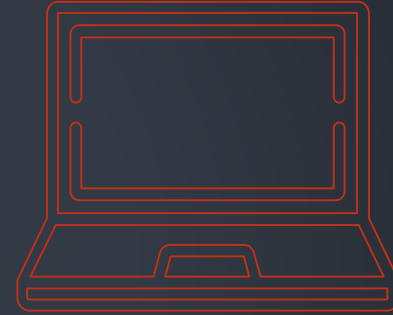


Principles of Personalized Learning



Staffing

- Director of Personalized Learning
- Personalized Learning Coach
- Director of College & Career Readiness
 - Job Shadows
 - Internships
 - Dual Credit
- Family Case Manager
- Site Coordinator
 - Community in Schools



What's Next

- Micro -credentials
- Personalized Professional Learning
- Competencies
 - Portrait of a Learner
 - Learning Continuum Design
 - Mastery Transcript
- HB 1478 and SB 2196
- BHAG: 2022 -2023 Full CBE



Questions