

September 9, 202



# TSI/CSI Overview

Amanda Peterson  
Director, Educational Improvement and Support



# ESSA and Accountability

- The [Every Student Succeeds Act \(ESSA\)](#) was signed into law on December 10, 2015.
- ESSA reauthorized the 1965 Elementary and Secondary Education Act (ESEA), which was previously reauthorized as No Child Left Behind (NCLB).
- The law builds on key areas of progress and ongoing efforts to improve educational opportunities for all students in North Dakota.
- On September 1, 2017, NDDPI received official approval of the [North Dakota State ESSA Plan](#).
- NDDPI staff continues to review the law and engage in deliberate stakeholder involvement through the ESSA Planning Committee which approves any accountability process revisions that don't require a full state plan amendment.

# Purpose of Accountability

- The purpose of the ND accountability system is to provide statewide responsibility to all stakeholders to pursue the ND PK-12 Strategic vision and to do the following:
  - Provide transparency and public reporting of key performance and improvement indicators for all schools, districts, and the state;
  - Ensure all schools and districts are engaged in a process of continuous improvement;
  - Identify when and where desired results are not being achieved, prioritize which schools are most in need of support; and
  - Allocate resources and support services, increase oversight and engagement and elevate accountability for those schools most in need of support.

**Our vision is that all students will graduate choice ready with the knowledge, skills, and disposition to be successful**

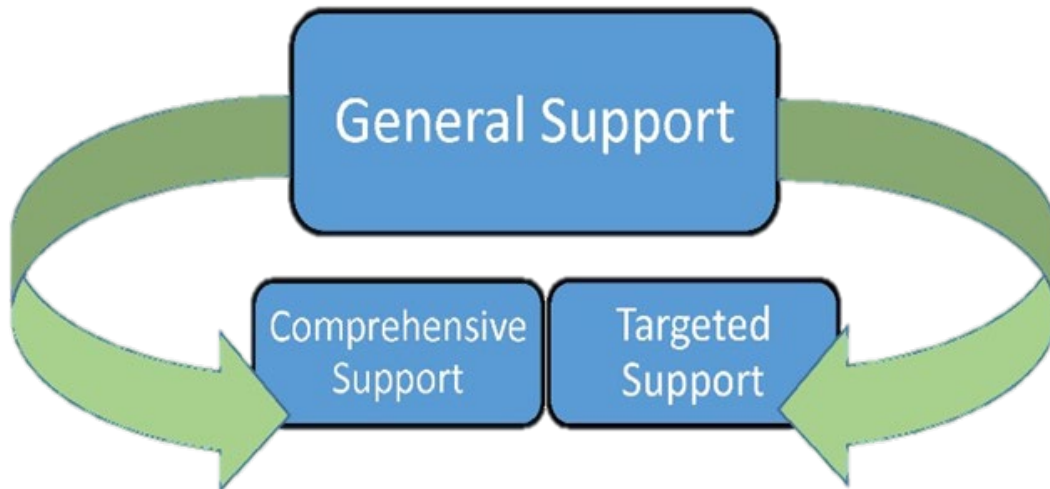
We will make progress toward this vision by achieving these long-term outcomes for students

- Increase students who enter kindergarten prepared to learn, and increase the number of kindergarten classrooms that meet the needs of every learner
- Increase students who demonstrate reading proficiency in 3rd grade
- Increase students who meet expected learning gains each year
- Increase students who engage in learning
- Increase students who graduate Choice Ready
- Reduce the disparity in achievement for students with disabilities, students in poverty, and Native American students

We will drive improvement on these outcomes through focused effort within these strategic themes

- Quality early childhood experiences
- Support for safe and healthy behaviors
- Career awareness, exploration, and development
- Quality education personnel
- Quality student-centered instruction

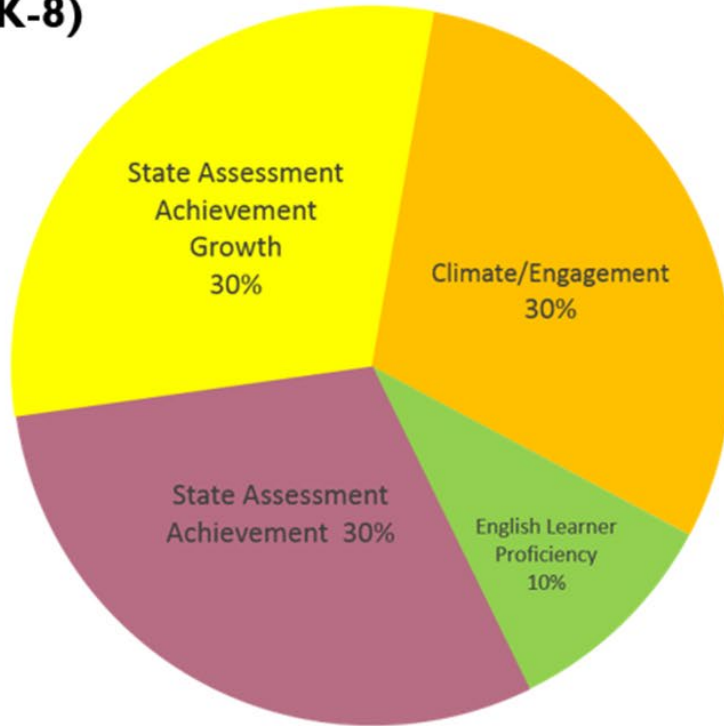
# Continuous Improvement



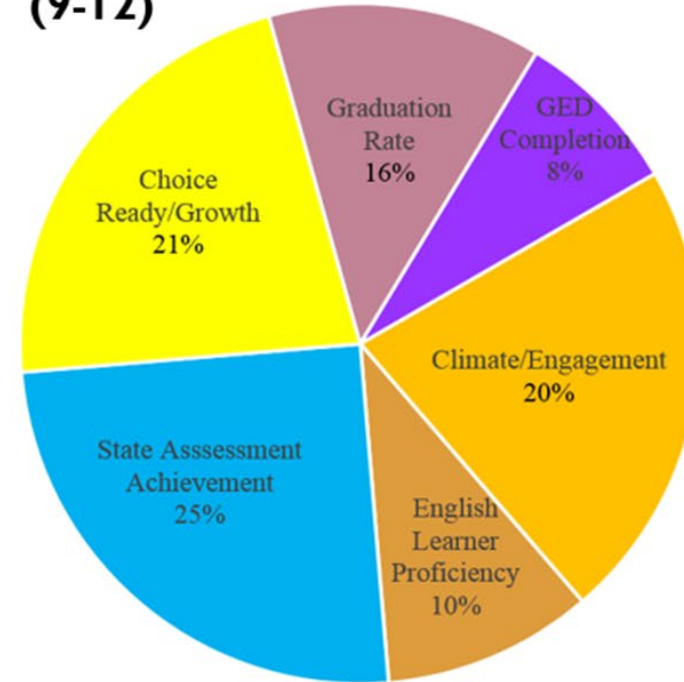
- Currently, North Dakota uses Cognia statewide for approval and as a system of improvement of all public schools.
- All schools participate in continuous school improvement through the Cognia process.
- Within North Dakota's System of Support:
  - General Support
  - Targeted Support
  - Comprehensive Support
- Visit the [Insights Dashboard](#) for detailed information about any school in North Dakota.

# School Accountability System

**Elementary  
(K-8)**

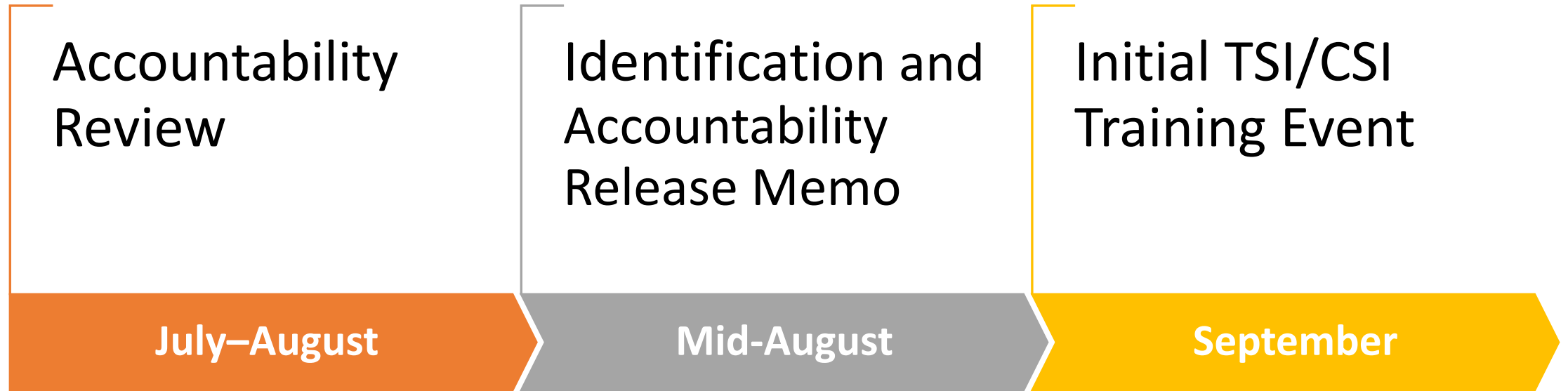


**High School  
(9-12)**



For accountability purposes, grades 7 & 8 are included with the elementary report, except for large districts with an approved middle school.

# Current Identification Timeline



# ESSA Accountability and ND

- Under ESSA, NDDPI initially identified schools as Comprehensive Support and Improvement (CSI) for the first time in March of 2018 and the first round of Targeted Support and Improvement (TSI) schools in August of 2018 based on accountability data from either the 2016-2017 school year or the 2018-2019 school year.
- In the spring of 2019, with COVID-19, ND was unable to administer the ND State Assessment (NDSA) and, therefore, run accountability.
  - At that time, any school that was identified as TSI, was “frozen”, which meant that they were still considered TSI in 2020-2021.
  - Schools identified as CSI, were supposed to be in their “final” year of identification in 2020-2021.
- In the winter of 2020, the USED released a waiver to allow states to again pause accountability, due to potential data inconsistencies caused by the pandemic.
  - During the spring ND ESSA Implementation meeting, the committee voted to again “freeze” any TSI/CSI school for the 2021-2022 school year.
- Preliminary 2022-2023 TSI/CSI notifications occurred on August 17, 2022. The accountability review period ends on September 9, 2023.
  - NDDPI intends for this information to be finalized and available to the public next week.

# Comprehensive Support and Improvement

<https://www.nd.gov/dpi/districtschools/essa/accountability/comprehensive-support-and-improvement>



# CSI Selection process

**Comprehensive Support:** Schools identified for Comprehensive Support are selected based upon the following criteria and calculation steps:

1. Rank the schools by total points earned based upon a strategic data process. Information can be found in the [North Dakota Accountability Index Guide](#).
2. Take the bottom 5% of these schools.
3. Add high schools who have a less than 67% 6-year cohort grade rate.
4. DPI reviews the pool and identifies candidates.
5. In 21-22, 15 schools are identified for Comprehensive Support.

# CSI Exit Criteria

Scores that are above the bottom 5% of Title I schools when data is run every 3 years.



**For a school identified based on graduation rate:** a rate that is 67% or higher for 3 consecutive years.



**For a school identified based on low performance:** success in meeting established interim goals for both academic achievement and graduation rates.



# 2020-2021 TSI List

## North Dakota School Support and Improvement

### Comprehensive Support:

District	ID	School Name	Year 3 Award Amount	Interventions	Total Enrollment	Grade Span
Center-Stanton	3300113501	Center-Stanton Elementary	\$ 130,000.00	EdDirection Instructional Coaching, Leadership Coaching, PLC Training, 30-60-90 Day Planning NDMTSS, Frontline services, Math Curriculum	142	PK-6
Dunseith	4000119681	Dunseith Elementary	\$ 132,873.81	EdDirection Instructional Coaching, Leadership Coaching, PLC Training, NDMTSS, Diven by Data book study	273	PK-6
Ft Totten	0303029103	Four Winds Community High	\$ 133,888.82	EdDirection Instructional Coaching, Frontline Services, Odysseyware, NDMTSS PD, extended school year (4 teachers, 2 paras and bus driver)	170	9-12
Ft Yates	4300429212	Fort Yates Middle	\$ 197,500.00	EdDirection Instructional Coaching, Leadership Coaching, Compass Learning,	118	6-8
Mandaree	2703654591	Mandaree Elementary	\$ 112,203.55	EdDirection Instructional Coaching, Leadership Coaching, Compass Learning, IXL, Odysseyware, Accelerated Reader, MAP skills, Learning/Reading A-Z, Read 180, Corrective Reading	173	K-8
Minneaukan	0300557411	Minnewaukan Elementary	\$ 142,447.74	EdDirection Instructional Coaching, Interventionist	199	PK-8
Montpelier	4701457941	Montpelier Elementary	\$ 127,917.49	EdDirection Instructional Coaching, Frontline Services, READ 180, Leveled Readers, ActivPanels, PD Steve Dunn writing workshop	58	PK-6
New Town	3100160393	New Town High	\$ 248,626.61	Community in Schools, eHealth services, Home School Liaison, CIS/Wraparound Services Training	267	9-12
Oberon	0301662261	Oberon Elementary	\$ 210,199.53	EdDirection Instructional Coaching, Frontline Services	64	K-8
Selfridge	4300878041	Selfridge Elementary	\$ 163,995.23	EdDirection Instructional Coaching, Leadership Coaching, PLC Training, Frontline Services, PD for Paraprofessional, Data Coordinator, Contract for Grant Coordinator, Leadership Team	22	K-6
Turtle Lake-Mercer	2807285621	Turtle Lake-Mercer Elementary	\$ 135,366.32	EdDirection Instructional Coaching, Leadership Coaching, Frontline Services, Safe and Civil Schools, Leadership Team, Strategic Planning, Smartboard, System 44 Training and Materials	113	K-6
Twin Buttes	1303785821	Twin Buttes Elementary	\$ 125,015.06	EdDirection Instructional Coaching, Frontline Services	37	K-8
Warwick	0302992191	Warwick Elementary	\$ 102,330.86	EdDirection Instructional Coaching, Frontline Services, LLI Materials, Number Worlds Math	88	PK-4
White Shield	2808593631	White Shield Elementary	\$ 143,650.00	EdDirection Instructional Coaching, Frontline Services, Compass Learning, Family Engagement PD, Data Training PD, Writing camp PD	101	K-8

Please note: These Comprehensive Support Schools are selected for a period of three years: SY2018-2019, SY2019-2020, and SY2020-2021

## Preliminary CSI Results (15 schools)

	<b>District</b>	<b>Enrollment</b>
Warwick Elementary School	Warwick 29	87
Fort Yates Middle School	Ft Yates 4	67
Warwick Middle School	Warwick 29	61
Selfridge Elementary School	Selfridge 8	48
Jefferson Elementary School	Fargo 1	288
Dunseith Elementary School	Dunseith 1	275
Mandaree Elementary School	Mandaree 36	151
Cannon Ball Elementary School	Solen 3	137
Oberon Elementary School	Oberon 16	55
Drayton Elementary School	Drayton 19	115
Dunseith High School	Dunseith 1	315
Valley Middle School	Grand Forks 1	527
Bowbells Elementary School	Bowbells 14	46
Dickinson Middle School	Dickinson 1	814
Four Winds Community High	Ft Totten 30	191

# Targeted Support and Improvement

<https://www.nd.gov/dpi/districtschools/essa/accountability/targeted-support-and-improvement>



# Current Targeted Support Selection Process

Schools are selected, annually, from a pool of “consistently underperforming” schools, defined in the following terms:

- A school, based on the composite reading and math score on the NDSA, performing in the bottom 10% for up to 3 consecutive years
  - Any school from the pool that has one or more subgroups (i.e. economically disadvantaged, children with disabilities, English Learners, and/or White, American Indian, Alaska Native, African American, Asian or Native Hawaiian, Other Pacific Islander, Hispanic or Latino) with **achievement levels below the highest performing comprehensive school** based on all accountability factors within the state’s accountability system
-

# TSI Exit Criteria

School is no longer underperforming based on TSI-selection criteria.



```
graph TD; A[School is no longer underperforming based on TSI-selection criteria.] --> B[School is successful in meeting established interim goals in identified subgroups for two consecutive years and the school is exiting by making progress on its own.]; B --> C[Schools receiving TSI support that do not meet exit criteria after 3 consecutive years will be selected for Comprehensive Support.];
```

School is successful in meeting established interim goals in identified subgroups for two consecutive years and the school is exiting by making progress on its own.

**Schools receiving TSI support that do not meet exit criteria after 3 consecutive years will be selected for Comprehensive Support.**

# 2020-2021 TSI List

## North Dakota School Support and Improvement 2020-21

### Targeted Support:

District	ID	School Name	Award Amount	Interventions	Total Enrollment	Grade Span
Belcourt	4000785662	Turtle Mt Community Middle	\$ 50,000.00	Data Consultant; NDMTSS; NDMTSS Training	394	6-8
Divide County	1200118601	Divide County Elementary	\$ 106,021.14	NDMTSS: Building your System, Developing Pathways; Ed Direction Instructional Coaching; Curriculum after NDMTSS training is complete; after school program, Reading Mastery Curriculum K-5, Vmath, Early Intervention in Reading, Corrective Reading	193	K-6
Eight Mile	5300622701	Eight Mile Elementary	\$ 87,000.00	NDMTSS Training and PD; Living Tree family engagement; PD Five Simple Principles; Responsibility-Centered Discipline; PBL activities; Fast ForWord	203	K-8
Emerado	1812723621	Emerado Elementary	\$ 84,808.38	NDMTSS: Barrier Busting, Developing Pathways; Second Step; Bullying Prevention; Dreambox; Paraprofessional; Lindamood Phoneme PD; Saxon Math	126	PK-8
Fargo	0900154351	Madison Elementary	\$ 83,311.17	Literacy Coach	123	K-5
Grand Forks	1800189752	Valley Middle	\$ 66,150.00	Instructional Strategist, 6th Grade Intervention, Freckle, newsela	596	6-8
Hankinson	3900834321	Hankinson Elementary	\$ 77,798.40	PD for Data Training, Family Engagement, NDMTSS, IXL, AIMS Web; Read Naturally; iXL; Focus Math; Caring School Community; Library books; computers; headphones, PD for Effective Education for Children with Down Syndrome	132	K-6
Nedrose	5100460061	Nedrose Elementary	\$ 71,198.25	NDMTSS, IXL, STAR 360, Computers, PD for intervention/behavior strategies	225	4-8
Nesson	5300273521	Ray Elementary	\$ 133,768.62	Instructional Coaching; NDMTSS; Successmaker Software and PD; iPads, Read 180, chromebooks	271	K-8
New Town	3100160361	Edwin Loe Elementary	\$ 11,175.90	Saxon Math Curriculum and Resources, Cognia	533	PK-5
New Town	3100160391	New Town Middle/Elementary	\$ 50,000.00	NDMTSS Evaluating Your System; NDMTSS PD - SocEmotional/PBIS; Student Engagement; Math Manipulatives	224	6-8
Parshall	3100369231	Parshall Elementary	\$ 80,000.00	NDMTSS Evaluating Your System; NDMTSS Developing Schoolwide Behavior Expectations; NDMTSS Prevent-Teach-Reinforce; Math Curriculum and PD	172	PK-6
Parshall	3100369253	Parshall High	\$ 79,165.49		105	7-12
Solen	4300312781	Cannon Ball Elementary	\$ 75,287.11	Paraprofessional salary/benefits, ISTE PD, ASCD PD, white board tables	121	PK-6
St John	4000381521	St John Elementary	\$ 77,370.73	NDMTSS Developing Pathways; Success for All; Renaissance; SciLearn; Proficiency Scale PD; Engagement PD, Corrective Math, Connective Math	301	K-8
St Thomas	3404382121	St Thomas Elementary	\$ 63,590.43	Mango Math, Benchmark Advance, ebooks (Kindles), stipends	39	PK-6
Warwick	0302992193	Warwick High	\$ 74,325.46	NWEA Fusion PD; Cognia PD; NDMTSS; Ed Direction instructional coaching services, Mental Health Training	70	9-12
Warwick	0302992192	Warwick Middle	\$ 92,978.06	NWEA Fusion PD; Cognia PD; NDMTSS; Ed Direction instructional coaching services, Mental Health Training	73	5-8
Williams County	5300857451	Missouri Ridge Elementary	\$ -	-	-	-
Williams County	5300857452	Missouri Ridge Middle	\$ -	-	-	-
Williston	5300194163	Williston High	\$ 64,118.44	NDMTSS Building System and Developing Pathways, EL Strategies PD, Safe and Civil School PD, PLC, Family Engagement PD, Beyond the School Day	1262	9-12
Williston	5300194182	Williston Middle	\$ 58,737.40	NDMTSS Building System and Developing Pathways, IXL, Writing Workshop PD, Safe and Civil School Training, Accellus PD	587	7-8



# Preliminary TSI Results (23 schools)

	District	Enrollment
Solen High School	Solen 3	90
Minnewaukan High School	Minnewaukan 5	80
New Town Middle School	New Town 1	153
White Shield Elementary	White Shield 85	134
Williston Middle School	Williston Basin 7	498
Carl Ben Eielson Middle School	Fargo 1	633
Nedrose Elementary School	Nedrose 4	219
Liberty Middle School	West Fargo 6	1208
Minto Elementary School	Minto 20	225
Turtle Mountain Community Elementary	Belcourt 7	634
Ben Franklin Middle School	Fargo 1	851
Mandan High School	Mandan 1	1144
South Middle School	Grand Forks 1	577
Wing Elementary School	Wing 28	46
Hebron High School	Hebron 13	44
Eight Mile High School	Eight Mile 6	96
McVay Elementary School	Williston Basin 7	413
Missouri Ridge Middle School	Williston Basin 7	362
Sargent Central High School	Sargent Central 6	44
Sunnyside Elementary School	Minot 1	305
Wachter Middle School	Bismarck 1	1067
Grafton Jr. High School	Grafton 18	145
Will-Moore Elementary School	Bismarck 1	232

# Requirements and Support

---

# Required Checkpoints



**September: Data and Goal Development**



**January: Implementation Checkpoint**



**Spring: Process Review, Implementation Celebrations**

# Parent Notification Requirement

## Notify

Notify parents and families regarding performance measures outlined in the state's accountability report (NDDPI provides templates)

## Provide

Provide a link to [Insights](#) on district website

## Include

School support status, reason for selection, and identifying information

# School Board Requirements

- School Boards providing oversight to CSI schools **must** go through the Be Legendary School Board Leadership Institute
  - It is **optional** for TSI schools.
- CSI schools must contact Marcia McMahon @ [marcia@eandmlc.com](mailto:marcia@eandmlc.com) to schedule by December 15, 2022 and complete the certification by September 2023



## OPPORTUNITY FOR SCHOOL BOARD MEMBERS: Be Legendary School Board Leadership Certification

*See back side for more details.*

North Dakota Department of Public Instruction (NDDPI) has partnered with Elliott and McMahon, LLC., to provide North Dakota school boards and school leaders with invaluable training to improve student outcomes. Using a research-based and proven system, the Be Legendary School Board Leadership Institute is based on **six critical pillars to transform school board performance:**

1. ADOPTING STUDENT OUTCOME GOALS
2. ADOPTING GOAL PROGRESS MEASURES
3. MONITORING STUDENT OUTCOME GOALS
4. STRUCTURING FOR SUCCESS
5. ADOPTING GUARDRAILS
6. ACTIVE TEAMWORK AND ADVOCACY



# Updated Support Framework

- NDDPI is contracting with NDREAs to provide support for TSI and CSI schools, specifically related to ESSA Accountability performance measures.

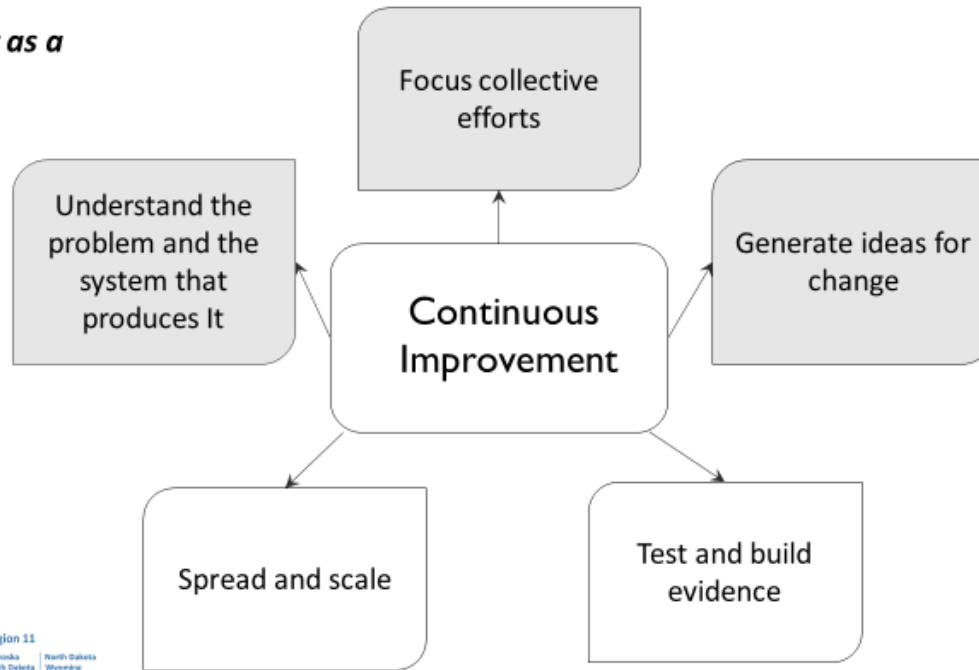
## **15.1-09.1-02.1. Regional education association - Services to be offered.**

1. In order to be eligible for state funding, a regional education association must offer the following services to its member districts:
  - a. Coordination and facilitation of professional development activities for teachers and administrators employed by its member districts;
  - b. Supplementation of technology support services;
  - c. Assistance with achieving school improvement goals identified by the superintendent of public instruction;
  - d. Assistance with the collection, analysis, and interpretation of student achievement data; and
  - e. Assistance with the expansion and enrichment of curricular offerings.
2. Subsection 1 does not preclude a regional education association from offering additional services.

- NDDPI will factor feedback from respective REA liaisons regarding a school's planning and decision-making processes into the accountability formula to determine which schools ultimately receive a TSI/CSI designation or are eligible to exit using a rubric within the School Renewal Handbook.

# 2022-2023 ND School Renewal Process

## *Improvement as a Science*



(Bryk et al., 2015)

## A School Renewal Handbook for North Dakota Public Schools (Version 2.0)

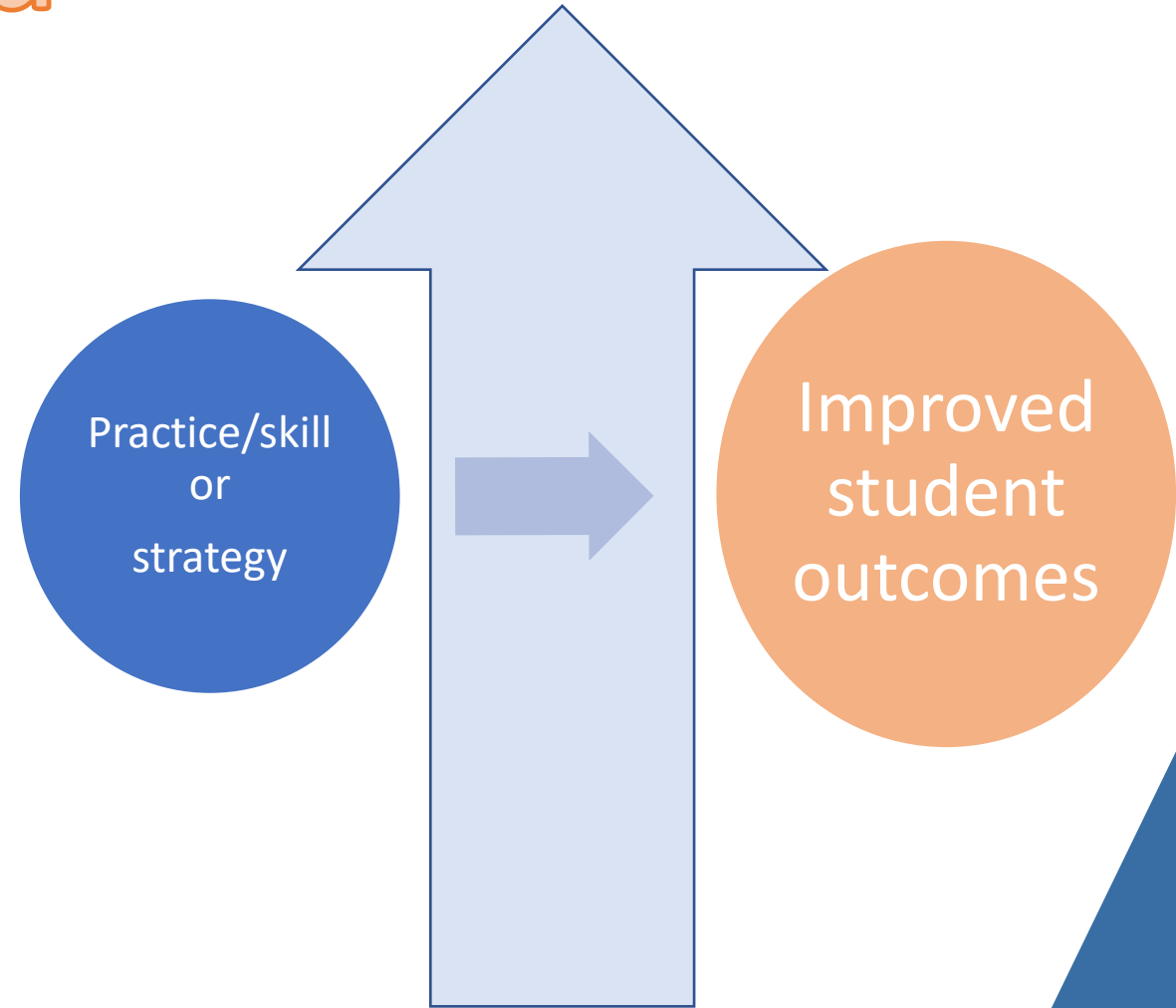
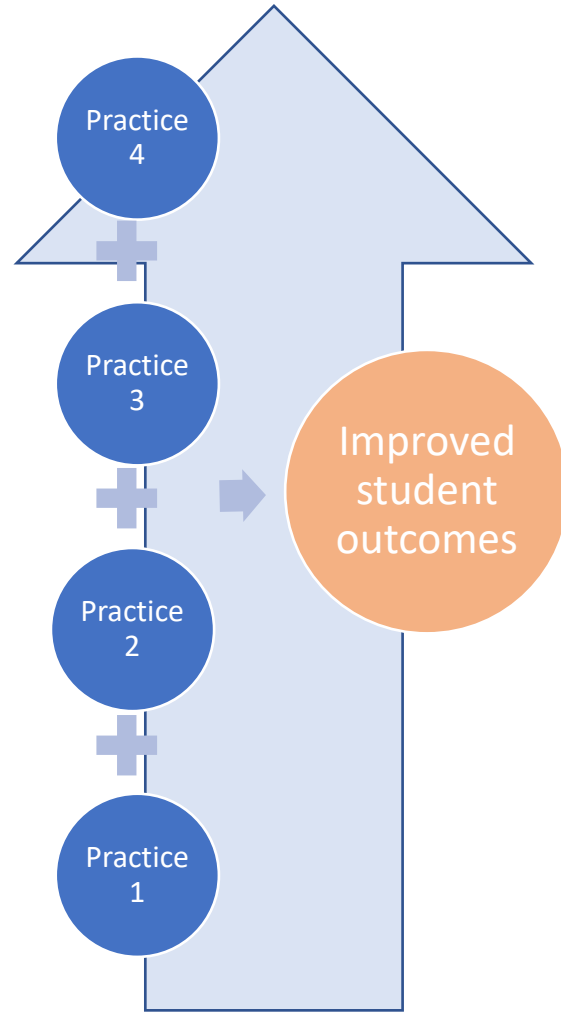


*What Specifically Are We Trying to Accomplish?  
(What Is the Exact Problem We Are Trying to Solve?)*

*What Change Practice Might We  
Introduce, and Why?*

*How Will We Know That Our  
Change(s) Are Improvements?*

# Evidence-Based Programs *And* Evidence-Based Practice





# Funding

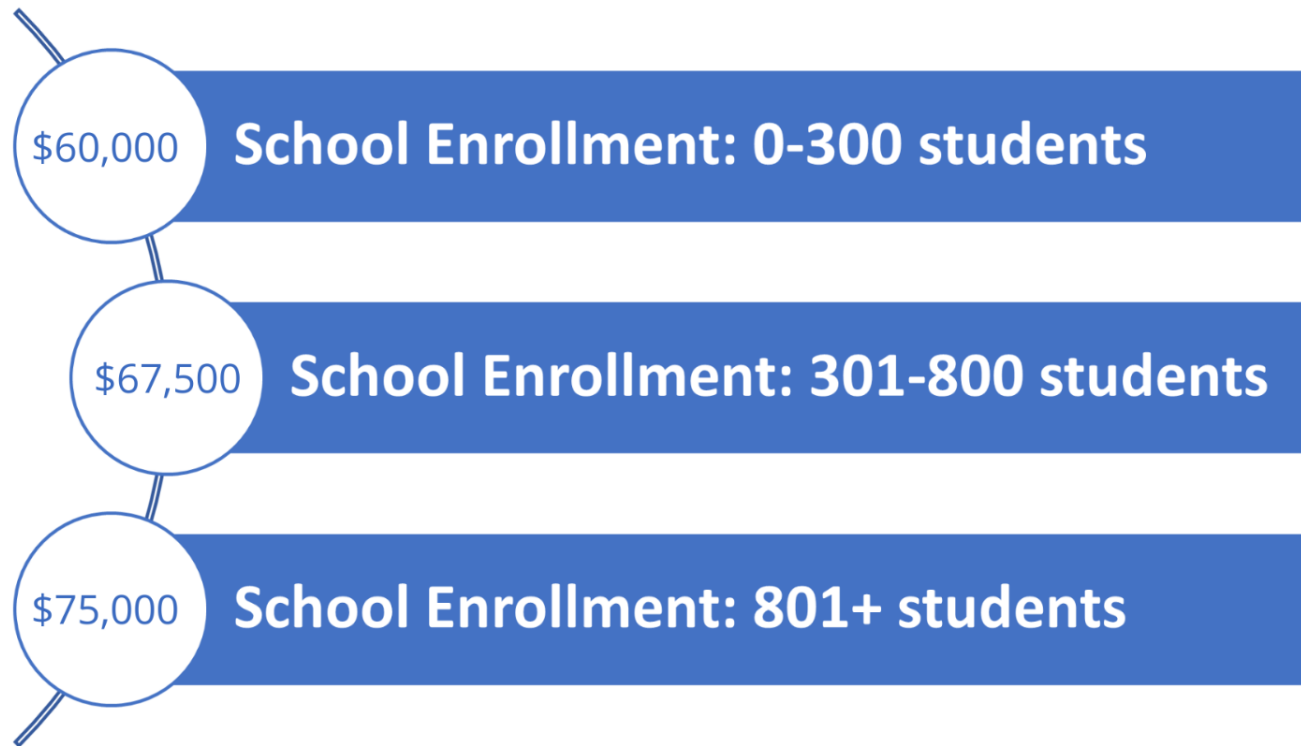


# Federal Grant Funding- Title I School Support

- 7% Title I Setaside
  - 2022-2023 Allocation
    - LEA Grants = \$3,047,242 (includes provision to contract with service agencies (REAs) to provide direct support)
    - Admin = \$160,382
-

Schools selected are awarded school improvement grants to support and sustain improvement efforts by targeting interventions for root causes or performance gaps in student subgroups.

TSI Grant Cycle and Allocation:

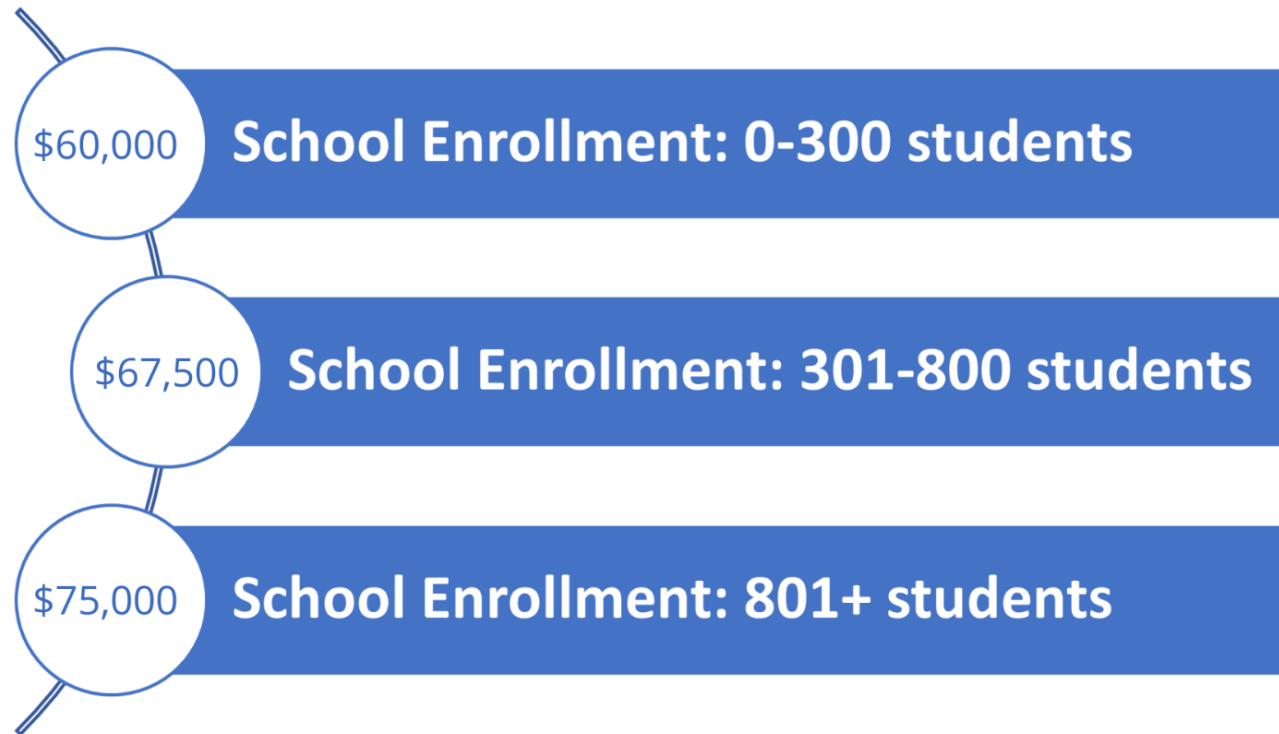


TSI Grant Funding Period: September 1, 2022 - December 30, 2023 (15 months)

TSI  
Funding  
Support =  
\$1,492,500

Schools selected are awarded school improvement grants for three consecutive years to implement evidence-based strategies and build local capacity to sustain improvement efforts.

CSI Grant Cycle and Allocation:



CSI Funding  
Support =  
\$930,000

CSI Grant Funding Period: September 1, 2022 - June 30, 2025 (yearly contract with continuing renewal)

# Goals and Uses of Funds

- All schools are provided guidance and support.
- Schools set their own goals based on their needs.
- Schools need to use evidence-based interventions and strategies.
- Funds are flexible, as long as schools can justify that the strategies, activities, and purchases align to the needs described in the application.
  - In general, these follow similar other Federal Program guidelines.
- Funds are intended to help schools make improvements in areas that led to the selection such as the following:
  - Professional Learning (MTSS, data, coaching, etc.)
  - Teacher stipends for professional learning, tutoring, school improvement meetings, etc. outside contract hours
  - Supplemental evidence-based curriculum
  - Technology and other hands-on manipulatives

# Evidence-Based Interventions

## Using Evidence-Based Practices

- ESSA generally supports and requests for prioritizing evidence-based interventions, strategies, and approaches as an overall theme
- Evidence-based interventions are practices, strategies, or programs proven to be effective when leading to particular outcomes
- Evidence demonstrates results when implemented
- Programs across Title I, Title II, Title III, and Title IV must include evidence-based interventions
  - Title I School improvement requires the implementation of a higher level of evidence
  - Other programs may use less rigorous standards

# Evidence-Based Interventions Level

## WHAT IS AN “EVIDENCE-BASED” INTERVENTION? (from section 8101(21)(A) of the ESEA)

“...the term ‘evidence-based,’ when used with respect to a State, local educational agency, or school activity, means an activity, strategy, or intervention that –

- (i) demonstrates a statistically significant effect on improving student outcomes or other *relevant outcomes* based on –
  - (I) *strong evidence* from at least one well-designed and well-implemented experimental study;
  - (II) *moderate evidence* from at least one well-designed and well-implemented *quasi-experimental study*; or
  - (III) *promising evidence* from at least one well-designed and well-implemented correlational study with statistical controls for selection bias; or
- (ii) (I) *demonstrates a rationale* based on high-quality research findings or positive evaluation that such activity, strategy, or intervention is likely to improve student outcomes or other *relevant outcomes*; and  
(II) includes ongoing efforts to examine the effects of such activity, strategy, or intervention.

# ESSA Law and Guidance

- Dictates application requirements.
  - NDDPI interprets the law to put the application together (see example).
- Statutory Information
  - Full text can be found here: <https://www2.ed.gov/documents/essa-act-of-1965.pdf>
    - School improvement law can be found on pages 9-15, Section 1003a
- [ESEA Funding Section 1003a Presentation \(PDF\) \(ed.gov\)](#)





**Amanda Peterson, Director**  
Educational Improvement & Support  
[amandapeterson@nd.gov](mailto:amandapeterson@nd.gov)  
701-328-3545