

MICROFILM DIVIDER

OMB/RECORDS MANAGEMENT DIVISION

SFN 2053 (2/85) 5M



ROLL NUMBER

DESCRIPTION

2207

2005 SENATE TRANSPORTATION

SB 2207

2005 SENATE STANDING COMMITTEE MINUTES

BILL/RESOLUTION NO. SB 2207

Senate Transportation Committee

☐ Conference Committee

Hearing Date 1-28-05

Tape Number	Side A	Side B	Meter #
1		x	10-1210
Committee Clerk Signature <i>Mary K Monson</i>			

Minutes:

Chairman Trenbeath opened the hearing on SB 2207 relating to the historical marker program.

All members were present except Senator Nething.

Senator Trenbeath (District 10) He introduced SB 2207. He said it was a good deal and easily read.

Merl Paaverud (Director, ND State Historical Society) See attached testimony in support of SB 2207. He also handed out reading information about historical marker programs in other states.

Senator Warner said that he admired the work their department does. He asked how they determine the sight that is most relevant to put a monument.

Merl Paaverud said that was a good discussion plate in the process. Taking that input from the locality so that they would be plugged into this and be able to say, "This is where we believe it

happened.” It would be a back and forth process to interpret and figure out where that would best be. Trying to take advantage of resources and get people involved so they have an official way to go with this sort of thing. He didn’t have all the details. It is one of the challenges they will have.

Senator Espegard asked when they planned to come back to the legislature and with what.

Merl Paaverud (Meter 670) said they would come back with a completed program -- all of the details, how the application would work, all the processes they would have in place.

Senator Trenbeath (Meter 720) Said there would still be some costs to them, especially for developing and administering this program. And he presumed those costs were in their budget someplace or would be accomplished under present FTE levels.

Merl Paaverud said they intend to do this with what they have.

Senator Espegard asked if it would include signs that may be on the state highway that would indicate that there is a historical marker/site somewhere off.

Merl Paaverud said he understood that would also have to be borne by the applicant.

Senator Trenbeath reported that another sponsor of the bill, Representative Monson, was otherwise engaged, but had been in previously and signed in support of SB 2207.

Tim Horner (Director of Transportation Programs, ND DOT) Testified in support of SB 2207. (Meter 940) He said they are monitoring the program. They do a lot of work with signs across the state. They envision they will supply cost information to the historical society, if needed.

Senator Espegard asked if they look like a highway sign.

Tim Horner said that was right. He wasn’t sure about coloring but said they would not be the historic marker itself.

2005 SENATE STANDING COMMITTEE MINUTES

BILL/RESOLUTION NO. SB 2207

Senate Transportation Committee

☐ Conference Committee

Hearing Date 2-03-05

Tape Number	Side A	Side B	Meter #
1		x	5480-5700
Committee Clerk Signature <i>Mary K Monson</i>			

Minutes:

Chairman Trenbeath opened SB 2207 for discussion.

Senator Trenbeath said the bill had to do with the historical marker project. As he recalled, all costs associated with this program would be shifted to the local people who want the markers.

Senator Warner motioned a **Do Pass**. Seconded by **Senator Bercier**.

As per Chairman Trenbeath, the vote was held open for Senator Espegard.

Final roll call vote 6-0-0. **Passed**. Floor carrier is **Senator Trenbeath**.

Date: 2-3-05
Roll Call Vote #: _____

2005 SENATE STANDING COMMITTEE ROLL CALL VOTES
BILL/RESOLUTION NO 2207

Senate TRANSPORTATION Committee

☐ Check here for Conference Committee

Legislative Council Amendment Number _____

Action Taken Do Pass

Motion Made By Sen. Warner Seconded By Sen. Bercier

Senators	Yes	No	Senators	Yes	No
Senator Espegard	✓		Senator Bercier	✓	
Senator Mutch	✓		Senator Warner	✓	
Senator Nething	✓				
Senator Trenbeath, Chairman	✓				

Total (Yes) 6 No 0

Absent 0

Floor Assignment Senator Trenbeath

If the vote is on an amendment, briefly indicate intent:

REPORT OF STANDING COMMITTEE (410)
February 4, 2005 8:43 a.m.

Module No: SR-23-1820
Carrier: Trenbeath
Insert LC: . Title: .

REPORT OF STANDING COMMITTEE

SB 2207: Transportation Committee (Sen. Trenbeath, Chairman) recommends DO PASS
(6 YEAS, 0 NAYS, 0 ABSENT AND NOT VOTING). SB 2207 was placed on the
Eleventh order on the calendar.

2005 HOUSE POLITICAL SUBDIVISIONS

SB 2207

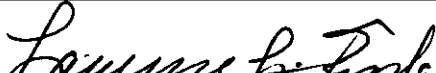
2005 HOUSE STANDING COMMITTEE MINUTES

BILL/RESOLUTION NO. SB 2207

House Political Subdivisions Committee

☐ Conference Committee

Hearing Date February 25, 2005

Tape Number	Side A	Side B	Meter #
1	x		2.0 to 26.4
2	x		13.5 to 14.7
Committee Clerk Signature 			

Minutes: **Rep. Devlin, Chairman** opened the hearing on SB 2207, A Bill for an act to amend and reenact section 55-10-12 of the North Dakota Century Code, relating to the historical marker program.

Sen. Trenbeath representing District 10 and prime sponsor appeared to explain that the bill provides that anyone could have historical marker or sign but the complete cost of signing and other information regarding the site would be born by the applicant. There was not fiscal note and the historical society can take care of it under their current budget. The other reason for his appearance was to introduce Merle Paverud who had done most of the work necessary to get the bill to this point.

Rep. Ekstrom (3.0) Who would own and maintain the signs?

Sen. Trenbeath The private individuals or organizations would pay for them and if the state were to maintain them they would bill back the cost. Since they would be on State property it would appear the State would own them.

Rep. Zaiser (3.4) Would there be a motif consistent throughout the state?

Sen. Trenbeath Mr. Paverud will address this but in the testimony in the Senate that will be a standardized sign and motif but there may be different size sign to accommodate the amount of lettering needed.

Rep. Zaiser Would the State Historical Society then make the determination that the site was indeed historical in nature?

Sen. Trenbeath I believe it will be up to the Director but Mr. Paverud will discuss that.

Rep. N. Johnson (4.3) Can you give me an example of what might be served by this?

Sen Trenbeath Yes -- in our area there is an old trading post in Walhalla -- it is log and has been restored and under this the local historical society would apply for signing along major routes on leading to town.

Merle Paverud Director of the State Historical Society testified in support of the bill explaining in considerable detail how they currently operate, how the application would proceed, be processed, and administered. How other States approach this same problem was also discussed as well as some examples of different areas throughout the state. A copy of his prepared remarks and copies of other state programs were handed out for the committee to examine are attached. Other state programs will be studied and used as guides -- included in the handouts was information from Wisconsin, Illinois and Nebraska; however, Mr. Paverud reference Nebraska, south Dakota and other states.

There was interest and questions from the Committee. Rep. Koppelman questioned how you weed out the requests which are vicious, or a play for publicity -- an example of a cafe in Fargo having a sign which says that "in 1878 nothing happened at this site".

Tim Horner, Director of Transportation Programs for the North Dakota DOT testified their interest would be in directional or advance signing, standardization of the signs consistent with the Uniform Manual for Traffic Control Devices, cost sharing opportunities where federal funds might be available on Federal or National sites of great interest.

Rep. Ekstrom (17.2) There are such a variety of site will they be referenced on the state map?

Tim Horner There are probably too many site to pace them all on the state map but certainly those of national interest and those of state or great historical interest will included as worked out in cooperation with the State Historical Society.

Rep. Zaiser (18.2) What would be the cost of these signs?

Tim Horner Depending on the size but as an example a 2 foot by 6 foot sign with 6 inch lettering plus two posts would cost about \$400 to \$450.

Tim Horner Our District office signs shops and personnel or contractors.

Further discussion covered tourism impact, profit sharing from tourism, and the fact that South Dakota had some particularly nice signs.

There being no further testimony for nor against SB 2207 **Rep.Devlin, Chairman** closed the hearing. (24.6).

Tape 2 side A --- Action (13.5)

Rep. Maragos move a 'Do Pass' motion for SB 2207. **Rep. N. Johnson** seconded the motion.

On a roll call vote the motion carried **12 ayes 0 nays 0 absent**. **Rep. Zaiser** was designated to carry SB 2207 on the floor.

End of record (14.7) .

Date: February 25, 2005
Roll Call Vote:

2005 HOUSE STANDING COMMITTEE ROLL CALL VOTES
BILL/RESOLUTION NO. SB 2207

House POLITICAL SUBDIVISIONS

Committee

☐ Check here for Conference Committee

Legislative Council Amendment Number _____

Action Taken

DO PASS

Motion Made By

Rep. Maragos

Seconded By

Rep. Johnson

Representatives	Yes	No	Representatives	Yes	No
Rep. Devlin, Chairman	✓		Rep. Ekstrom	✓	
Rep. Herbel, Vice Chairman	✓		Rep. Kaldor	✓	
Rep. Dietrich	✓		Rep. Zaiser	✓	
Rep. Johnson	✓				
Rep. Koppelman	✓				
Rep. Kretschmar	✓				
Rep. Maragos	✓				
Rep. Pietsch	✓				
Rep. Wrangham	✓				

Total (Yes)

12

No

0

Absent

0

Floor Assignment

Rep. Zaiser

If the vote is on an amendment, briefly indicate intent:

REPORT OF STANDING COMMITTEE (410)
February 25, 2005 11:49 a.m.

Module No: HR-35-3671
Carrier: Zaiser
Insert LC: . Title: .

REPORT OF STANDING COMMITTEE

SB 2207: Political Subdivisions Committee (Rep. Devlin, Chairman) recommends DO PASS (12 YEAS, 0 NAYS, 0 ABSENT AND NOT VOTING). SB 2207 was placed on the Fourteenth order on the calendar.

2005 TESTIMONY

SB 2207

SB 2207
Senate Transportation Committee
January 28, 2005

Testimony by Merl Paaverud, Director
State Historical Society of North Dakota

*Same given
to House
Political Subs*

Introduction

Mr. Chairman and members of the Committee, my name is Merl Paaverud and I am director of the State Historical Society of North Dakota. The mission of the State Historical Society of North Dakota is to identify, interpret, preserve and protect the heritage of the people of North Dakota. Our great state has a colorful and important story to share with our children, our families, neighbors and visitors from around the world. The State Historical Society is always looking for new ways to inform and educate people about our history. Through our research and communications with other states, we have found a program idea that shares accurate history, educates the public and promotes heritage tourism. This is what is called a Historical Marker Program.

Project Overview

As I stated, a number of states have historical marker programs. My staff has reviewed options from Nebraska, Wisconsin, Illinois, Florida and Saskatchewan and have passed out copies of their programs for your perusal.

We believe that a good historical marker program provides accurate information about local, state and national points of interest. As it now stands, we do provide standardized signs to mark state historic sites, but there is no established process to develop other historical markers in North Dakota. We have received numerous requests for historical markers from individuals and communities in the past, but we are only able to provide examples of markers types and offer our assistance to review interpretive information. The result has been a wide variety of formats for signs and sometimes questionable information included on the signs.

I am asking that you grant authority for the State Historical Society of North Dakota to develop and administer an official historical marker program for North Dakota. This would provide a process to ensure accurate information and uniform presentation for official historical markers. The actual process will involve a continued review of information from other states to understand what they have done and what works for their programs. We will share this information and seek input from individuals, communities, and state partners including North Dakota Department of Transportation, North Dakota Parks and Recreation, Department of Commerce-Tourism Division and North Dakota Geological Survey. The result will be a historical marker program that is right for North Dakota's needs. The general concept for the program will be to establish a standardized

application and approval process, and assist with research and development of information to be included on the marker. A variety of marker sizes will be designed, and the State Historical Society will maintain the official listing of approved markers. I also ask that authority continue for the director of the State Historical Society to place historical markers on property listed on the state historic sites registry as has been done in the past. This registry is a listing that is approved after review by the State Historical Board. This new program guidelines will be brought back to the Legislature during the next session for final approval.

Budget Summary

I recommend that all funding for production, installation and maintenance of these historical markers and costs for highway directional signage be the responsibility of the project applicant and sponsor. A fiscal note will thereby not be required for the program. We will also provide information to applicants about grants and other funds that might be available to them for this purpose.

Conclusion

I believe that this program will provide much needed assistance to individuals, communities and organizations through a standardized process for producing high quality historical markers. The historical markers will serve as educational tools and will promote heritage tourism in our state.

I will be glad to answer any questions that you might have.

[NSHS Home](#) | [Research & Publications](#)

Nebraska Historical Marker Program

[Read Markers](#) [Legal Authority](#) [Evaluation Criteria](#) [Marker Designs](#)

The Nebraska State Historical Society is responsible for commemorating significant events, people, places, sites, movements, and traditions in Nebraska history by coordinating the erection of historical markers. By law, no marker may be erected without the written consent of the Nebraska State Historical Society. See the Revised Statutes of Nebraska for [legal authority](#) relating to the marker program.

Proposals for the placement of historical markers are often initiated by local sponsoring organizations or government entities. In most instances the local sponsor is responsible for financing the marker. The topic of a proposed marker and the specific text to appear thereon are subject to review and approval by a Nebraska State Historical committee under the provisions of R.R.S. 82-121. Proposals for markers are reviewed according to [evaluation criteria](#) set by the Society.

View samples of [marker texts](#) on the website.

All markers are cast aluminum, silver letters against a blue background, with the state seal. They are cast in three distinct [designs](#). These are intended to reflect historical significance as suggested by the Evaluation Criteria.

The preferred location for historical markers is on public property or on property owned by non-profit organizations operating for public purposes. Markers are rarely approved for placement on individually-owned private property. If the marker will not be located along a state highway, the sponsoring organization must submit written approval from the owner of the property where the marker is to be placed, and assume the cost of its erection. Sponsoring organizations receive a credit line at the bottom of the marker.

For more information, contact:

[John Lindahl](#)
Nebraska State Historical Society
P.O. Box 82554

[NSHS Home](#) | [Research & Publications](#)

Nebraska Historical Markers Legal Authority

REVISED STATUTES OF NEBRASKA

Reissue of Volume 5A, 1987

82-119. Nebraska State Historical Society; powers and duties. The Nebraska State Historical Society shall be charged with the duty of marking and preserving the historical landmarks of Nebraska. It may hold property and be a party to suits and contracts.

Source: Laws 1957, c. 384, section 1, p. 1339; Laws 1959, c. 441, section 1, p. 1482; Laws 1961, c. 440, section 1, p. 1358; Laws 1965, c. 557, section 1, p. 1840; R.R.S.1943, sections 82-201; Laws 1969, c. 811, section 1, p. 3048.

82-120. Nebraska State Historical Society; selection of projects; procurement of markers; purchase, gift, or eminent domain; erection and maintenance. The Nebraska State Historical Society shall have authority to determine what historical events, personalities, sites, and traditions are of importance to the State of Nebraska and to justify the expenditure of public funds for the purchase of markers of uniform style, to be known as Highway Historical Markers; to procure such markers by expending any funds specifically appropriated by the Legislature for such purpose and to designate the approximate location of such markers; to preserve present markers; to accept gifts; and have power of eminent domain to be exercised as provided in sections 76-704 to 76-724. The Department of Roads shall erect and maintain such markers and shall determine the exact location of such markers, having due regard for the safety and welfare of the motoring public.

Source: Laws 1957, c. 384, section 2, p. 1340; Laws 1959, c. 441, section 3, p. 1483; R.R.S.1943, sections 82-202; Laws 1969, c. 811, section 2, p. 3048.

82-121. Nebraska State Historical Society; powers; delegation to subcommittees. The Nebraska State Historical Society shall have authority (1) to designate the approximate location of such markers, (2) to preserve present markers, (3) to accept gifts, and (4) to encourage local participation in and contribution to the erection of such markers through the use of gifts and matching-fund agreements. The society may appoint and delegate to a special committee the duty of research and investigation to assist in the determination of proper sites, events, personalities, and traditions to be designated.

Source: Laws 1957, c. 384, section 3 p. 1340; Laws 1959, c. 441, section 4, p. 1483;
R.R.S.1943, sections 82-203; Laws 1969, c. 811, section 3, p. 3049.

82-122. Nebraska State Historical Society; markers damaged or destroyed; replacement. The Nebraska State Historical Society shall be empowered to use any legal means necessary to secure payment to the state for the actual replacement cost of any markers damaged or destroyed, accidentally or otherwise. Any funds so collected shall be placed in the treasury to the credit of the appropriate fund for the procurement of historical markers and may be expended as provided for by law.

Source: Laws 1957, c. 384, section 4, p. 1340; Laws 1959, c. 441, section 5, p. 1484;
R.R.S.1943, sections 82-204; Laws 1969, c. 811, section 4, p. 3049.

82-123. Historical markers; erection or maintenance; written consent of society required. It shall be unlawful for any person, public or private corporation, association, or organization to post, erect, or maintain any historical marker, monument, or organization to post, erect, or maintain any historical marker, monument, sign or notice, on public property or any place in the state, upon any public street, road, or highway in the state bearing any legend, inscription, or notice which purports to record any historical event, incident, or fact or to maintain any such historical marker, monument, notice, or sign posted or erected after September 20, 1957, unless a written certificate of approval has first been secured from the Historical Land Mark Council or, after December 25, 1969, from the Nebraska State Historical Society.

Source: Laws 1957, c. 384, section 5, p. 1340; Laws 1959, c. 441, section 6, p. 1484;
R.R.S.1943, sections 82-205; Laws 1969, c. 811, section 5, p. 3049.

82-124. Violations; penalty; malicious damage; recovery of replacement costs. Any person who shall violate any of the provisions of sections 82-119 to 82-124 shall be guilty of a Class V misdemeanor. Each day that a violation continues after notice shall constitute a separate offense. Where the markers are damaged maliciously, the court shall collect the replacement costs as part of the punishment.

Source: Laws 1957, c. 384, section 6, p. 1341; R.R.S.1943, sections 82-206; Laws 1969, c. 811, section 6, p. 3049; Laws 1977, LB 39, section 307

[Return](#) to Nebraska Historical Markers Main Page

[NSHS Home](#) | [Search](#) | [Index](#) | [Top](#)

<http://www.nebraskahistory.org/publish/markers/legal.htm>

Last updated 30 June 1998

For questions or comments on the website itself, email web@nebraskahistory.org

Nebraska State Historical Society - P.O. Box 82554, 1500 R Street, Lincoln, NE 68501

© 1998 All Rights Reserved.



Nebraska Historical Markers Evaluation Criteria

Criteria for Evaluating Events, Personalities, Places, Sites, Movements, or Traditions qualifying for marking with Nebraska Historical Markers under the Provisions of Sec. 82-120, Nebraska Revised Statutes:

1. **Events, Personalities, Places, Sites, Movements, or Traditions of statewide or national significance.**
 - o Examples: Chimney Rock, Ft. Atkinson, Homestead Movement, The Oregon Trail.
 - o *Suggested Marker Type:* Two-post or tablet-style.
2. **Events, Places, Sites, Movements, or Traditions of county or community-wide historical significance.**
 - o Examples: County or town historical marker (often as a centennial project), or sites such as McCook Army Air Base or Peru State College.
 - o *Suggested Marker Type:* Two-post, tablet-style, or single-post, depending on subject.
3. **Single buildings or localities of national, state, county, or community-wide significance.**
 - o Examples: Congregational Church of Blair, William H. Ferguson Mansion, Swedish Crosses Cemetery, Edison Schoolhouse.
 - o *Suggested Marker Type:* Single-post.
4. **Single buildings within a larger historic district.**
 - o Examples: Buildings at Ft. Robinson, Willa Cather Historical Center, or within a city historic district.
 - o *Suggested Marker Type:* Single-post.

State Historical Markers are not available to commemorate individuals, organizations, or structures noteworthy primarily for longevity, public service, or philanthropy not meeting the criteria for historical significance in 1-4 above. Information to be placed on historical markers must be documented as to accuracy.

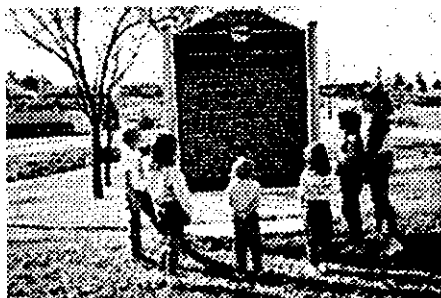
[Return](#) to Nebraska Historical Markers Main Page

[Text Version](#) | [NSHS Home](#) | [Research & Publications](#)



Nebraska Historical Markers Designs

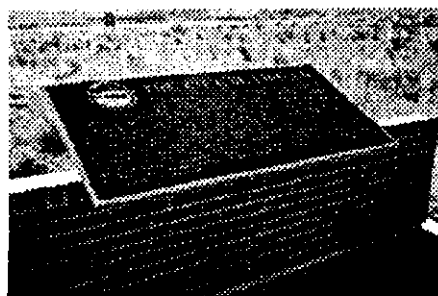
All markers are cast aluminum, silver letters against a blue background, with the state seal.



The two-post marker is 5 feet wide by 6 feet tall, weighs about 185 pounds, and can include about 180 words. The cost is \$4,500 including the posts.



The single-post marker is 42 inches wide by 30 inches tall, weighs about 100 pounds, and provides for about 80 words of text. The cost is \$1,425 including the post.



The tablet-style marker is 6 feet wide by 3 feet high, weighs about 100 pounds, and will

accommodate about 170 words. This style requires wall mounting or a masonry base.
The \$2,450 cost does not include the mounting or the base.

[Return](#) to Nebraska Historical Markers Main Page.

[NSHS Home](#) | [Search](#) | [Index](#) | [Top](#)

<http://www.nebraskahistory.org/publish/markers/designs.htm>
Last updated 29 March 2004

For questions or comments on the website itself, email web@nebraskahistory.org

Nebraska State Historical Society - P.O. Box 82554, 1500 R Street, Lincoln, NE 68501
© 2004 All Rights Reserved.

[NSHS Home](#) | [Research & Publications](#) | [Markers](#)



Nebraska Historical Marker Texts

County	Marker Title	Location	number
Adams	<u>Susan O. Hail Grave</u>	3.5 miles west and 2 miles north of Kenesaw	#1
Adams	<u>Crystal Lake</u>	Crystal Lake State Recreation Area, Ayr	#379
Adams	<u>Naval Ammunition Depot</u>	Central Community College, 1.5 miles east of Ha	
Adams	<u>Kingston Cemetery</u>	U.S. 281, 2.5 miles northeast of Ayr	#324
Adams	<u>The Oregon Trail</u>	U.S. 6/34, 9 miles west of Hastings	#9
Antelope	<u>Ponca Trail of Tears - White Buffalo Girl</u>	U.S. 275, Neligh Cemetery	#138
Antelope	<u>The Prairie States Forestry Project</u>	1.5 miles north of Orchard	#296
Antelope	<u>The Neligh Mills</u>	U.S. 275, Neligh Mills State Historic Site, Nel	
Boone	<u>St. Edward</u>	City park, adjacent to Nebr. 39	#398
Boone	<u>Logan Fontenelle</u>	Nebr. 14, Petersburg City Park	#205
Box Butte	<u>The Sidney Black Hills Trail</u>	Nebr. 2, 12 miles west of Hemingford.	#161
Box Butte	<u>Burlington Locomotive 719</u>	Northeast corner of 16th and Box Butte Ave., Al	
Box Butte	<u>Hemingford</u>	Main Street, Hemingford	#192
Box Butte	<u>Box Butte Country</u>	Jct. U.S. 385/Nebr. 87, ten miles east of Heming	
Box Butte	<u>The Alliance Army Air Field</u>	Nebr. 2, Airport Road, Alliance	#416
Boyd	<u>Lewis and Clark Camp Site: Sept 7, 1804</u>	U.S. 281, 4.6 miles north of Spencer	#346
Brown	<u>Lakeland Sod High School</u>	U.S. 20, 7.5 miles west of Ainsworth	#236
Brown	<u>Ainsworth Army Air Field</u>	Ainsworth Municipal Airport	#380
Buffalo	<u>The Great Plains</u>	I-80 rest area, westbound, Kearney	#202
Buffalo	<u>CCC Camp, Ravenna, Nebraska</u>	Nebr. 2, 1 mile southeast of Ravenna	#370
Buffalo	<u>Nebraska Centre - Boyd Rancho</u>	U.S. 30, 1.75 miles west of Gibbon	#359
Buffalo	<u>Kearney - Fort Kearny</u>	I-80 rest area, eastbound, Kearney	#200
Buffalo	<u>Post South Loup Fork "Fort Banishment"</u>	Nebr. 2, 1 mile southeast of Ravenna	#361
Buffalo	<u>Gibbon</u>	I-80 rest area, eastbound, Gibbon (removed, are	
Buffalo	<u>Watson Ranch</u>	U.S. 30, 4 miles west of Kearney	#178
Buffalo	<u>Elm Creek</u>	Library on Tyler St., Elm Creek	#319
Buffalo	<u>Kearney Cotton Mill</u>	U.S. 30, 3 miles west of Kearney	#148
Buffalo	<u>Historic Kearney</u>	City Centennial Park, Kearney	#153
Buffalo	<u>Gibbon, 1871-1971</u>	Windmill Park Access Road, 3 miles south of Gibl	
Buffalo	<u>Kearney State College</u>	1 mile west of Jct. Nebr. 10/U.S. 30	#125
Burt	<u>Tekamah</u>	U.S. 73, Tekamah	#198
Burt	<u>The Logan Creek Site</u>	U.S. 77, 2 miles south of Oakland	#151
Burt	<u>Lyons</u>	U.S. 77, south of Lyons	#65
Butler	<u>Shinn's Ferry</u>	Nebr. 64, 5.5 miles east of Bellwood	#252
Cass	<u>Weeping Water Academy</u>	Weeping Water Public Library, Randolph and H St:	
Cass	<u>St. Patrick's Cemetery</u>	Manley	
Cass	<u>Prehistoric Burial Site</u>	Eugene T. Mahoney State Park, 4 miles south of	
Cass	<u>Company A - First Nebraska Infantry 1861-1866</u>	Cass County Historical Society Museum, 646 Main	
Cass	<u>Bess Streeter Aldrich: 1881-1954</u>	Nebr. 1, Elmwood Park, Elmwood	#
Cass	<u>Lewis and Clark Campsite: July 21, 1804</u>	U.S. 77 at south end of Platte River Bridge	#
Cedar	<u>Scenic Missouri Valley</u>	U.S. 81, c. 3 miles south of Yankton, South Dak	
Cedar	<u>Historic Missouri Valley</u>	U.S. 81, c. 3 miles south of Yankton, South Dak	
Cedar	<u>Cedar County</u>	County Courthouse, Hartington	
Cedar	<u>Hartington - Home of two Nebraska Governors</u>	Cedar County Museum, 405 Hoese St., Hartington	
Chase	<u>Champion Water-Powered Mill</u>	Nebr. S15A, 3 miles west of Imperial	
Cherry	<u>Bryan Bridge</u>	Turnoff from U.S. 20, southeast of Valentine	
Cherry	<u>Opening the Sandhills</u>	U.S. 20, 2.5 miles east of Cherry-Sheridan west	
Cherry	<u>Fort Niobrara</u>	U.S. 20, 1.5 miles southeast of Valentine	#87
Cheyenne	<u>The Golden Link</u>	I-80 rest area, eastbound, Sidney	#164
Cheyenne	<u>Fort Sidney</u>	U.S. 30, Sidney	#16
Cheyenne	<u>Discovery Oil Well - Marathon Oil Co</u>	U.S. 385, 4.5 miles south of Gurley	#56

Cheyenne	<u>Sidney-Black Hills Trail</u>	U.S. 30, Sidney	#77
Cheyenne	<u>Cheyenne County</u>	I-80 rest area, eastbound, Sidney	#208
Cheyenne	<u>Geology</u>	I-80 rest area, eastbound, Sidney	#209A
Cheyenne	<u>Sioux Army Depot</u>	U.S. 30, northwest of Brownson	#362
Cheyenne	<u>Sidney-Cheyenne County</u>	I-80 rest area, westbound, Sidney	#209
Cheyenne	<u>Lodgepole and the Union Pacific Railroad</u>	City Park, Lodgepole	#156
Clay	<u>Harvard</u>	City Park, Harvard	#191
Clay	<u>Clay Center</u>	Alexander and Johnson Avenues, Clay Center	#2
Clay	<u>Spring Rancho</u>	Nebr. 74, 6 miles west of Fairfield	#372
Clay	<u>Edgar 1872-1972</u>	Nebr. 14, 4 miles west of Edgar	#145
Clay	<u>Sutton</u>	City Park, Sutton	#49
Clay	<u>The Soldiers' Monument</u>	S.W. section of city park, Cedar and Saunders,	
Cuming	<u>DeWitt Historical Site</u>	Nebr. 275, 4 miles west, .75 mile north of West	
Cuming	<u>John G. Neihardt Study</u>	Grove and Washington Sts., Bancroft	#291
Cuming	<u>John G. Neihardt Center</u>	Elm and Washington Sts., Bancroft	#207
Cuming	<u>Bancroft</u>	.5 mile west of Jct. Nebr. 51/16	#31
Cuming	<u>Cuming City Cemetery and Nature Preserve</u>	.5 mile west of U.S. 73 on County Road P214	#
Custer	<u>Custer County's First Courthouse</u>	Nebr. 40, Morgan Park, Callaway	#134
Custer	<u>Broken Bow</u>	County Courthouse, Broken Bow	#45
Custer	<u>Ansley 1886-1986</u>	City Park, Ansley	#308
Custer	<u>Westerville 1880-1980</u>	Jct. Nebr. 70/U.S. 183, west edge of Westerville	
Custer	<u>The Nebraska State Grange</u>	Nebr. 2, 5 miles northwest of Broken Bow	
Custer	<u>Cumro, Nebraska</u>	12.5 miles south of Ansley on U.S. 183, then 6 :	
Dakota	<u>Territorial Church</u>	U.S. 77, Dakota City	#23
Dakota	<u>Combs School, Built 1857 - Closed 1964</u>	U.S. 77, 1.5 miles south of Homer	#33
Dakota	<u>Lewis and Clark Camp Site: Aug 21, 1804</u>	U.S. 20, 1 mile west of Jackson	#343
Dakota	<u>Tonwantonaga</u>	U.S. 77, 1 mile north of Homer	#13
Dakota	<u>St. John's, 1856</u>	U.S. 20, Jackson	#34
Dawes	<u>Butte County</u>	U.S. 20, 4 miles east of Crawford	#3
Dawes	<u>The First Church in Chadron</u>	Chadron Avenue and 4th Sts., Chadron	#301
Dawes	<u>The Fort Pierre-Fort Laramie Trail</u>	Roadside park, west Jct. U.S. 385/U.S. 20, Chad	
Dawes	<u>Bordeaux Trading Post</u>	U.S. 20, Museum of the Fur Trade, 3 miles east	
Dawes	<u>German P.O.W. Camp</u>	Fort Robinson State Park	#299
Dawes	<u>Fort Robinson and the Railroad</u>	Fort Robinson State Park	#368
Dawes	<u>Post Headquarters, 1905</u>	Fort Robinson State Park	#215
Dawes	<u>Red Cloud Agency</u>	Fort Robinson State Park	#116
Dawes	<u>Adobe Officers' Quarters</u>	Fort Robinson State Park	#216
Dawes	<u>K-9 Training Area</u>	Fort Robinson State Park	#333
Dawes	<u>1887 Barracks Row</u>	Fort Robinson State Park	#332
Dawes	<u>Flagstaff, 1890</u>	Fort Robinson State Park	#275
Dawes	<u>Chadron-Chicago Cowboy Race (1893)</u>	Second and Bordeaux Sts., Chadron	#331
Dawes	<u>The Fort Robinson Cemetery</u>	Fort Robinson State Park	#223
Dawes	<u>Officer's Row, 1909</u>	Fort Robinson State Park	#273
Dawes	<u>Officer's Row, 1874-1875</u>	Fort Robinson State Park	#274
Dawes	<u>The Death of Baptiste Garnier</u>	Main Street, Crawford	#265
Dawes	<u>Buffalo Soldiers at Fort Robinson</u>	Fort Robinson State Park	#392
Dawes	<u>Chadron Creek Trading Post</u>	U.S. 385, 5.5 miles south of Chadron	#195
Dawes	<u>Fort Robinson</u>	Fort Robinson State Park	#102
Dawes	<u>1909 Brick Barracks</u>	Fort Robinson State Park	#276
Dawes	<u>The Flight of the Cheyennes</u>	Fort Robinson State Park	#425
Dawes	<u>Fighting in the Buttes</u>	Fort Robinson State Park	#426
Dawes	<u>The Council Tree</u>	5 miles east of Crawford on Hwy 20, N on Whitne	
Dawes	<u>Chadron State College</u>	Entrance to campus, Chadron	#124
Dawes	<u>Chadron State Park</u>	U.S. 385, 8 miles south of Chadron	#131
Dawes	<u>Crawford</u>	Wayside Park, Jct. U.S. 20/Nebr. 2, Crawford	
Dawes	<u>Crawford 1891 School Bell</u>	Southeast corner of Coates and 5th Sts., Crawfo	
Dawson	<u>The 100th Meridian</u>	U.S. 30, Cozad	#17
Dawson	<u>Swedish Crosses Cemetery</u>	NE 1/4, NE 1/4, T12N, R25W	#350
Dawson	<u>Central Platte Valley (replaced 74)</u>	I-80 rest area, westbound, Cozad	#181
Dawson	<u>Central Platte Valley (replaced 73)</u>	I-80 rest area, eastbound, Cozad	#182
Dawson	<u>The Tobin Indian Raid</u>	U. S. 30, 1.5 miles east of Overton	#222
Deuel	<u>Waterman Sod House</u>	U.S. 138, Eiker Park, Big Springs	#383
Deuel	<u>B-24J Bomber Crash</u>	Pony Express Park, south of Chappell	#348
Deuel	<u>Phelps Hotel</u>	Block 9, Big Springs	#382
Deuel	<u>Historic Lodgepole Creek Valley</u>	I-80 rest area, eastbound, Chappell	#316
Deuel	<u>The Great Platte River Road</u>	I-80 rest area, eastbound, Big Springs	#113
Deuel	<u>Julesburg and Fort Sedgwick</u>	I-80 rest area, eastbound, Big Springs	#112
Deuel	<u>Sam Bass and the Big Springs Robbery</u>	U.S. 138, Big Springs	#37
Deuel	<u>Big Springs</u>	I-80 rest area, eastbound, Big Springs	#114
Dixon	<u>Ponca State Park</u>	Ponca State Park, Ponca	#270
Dixon	<u>The Ionia "Volcano"</u>	Nebr. 12, Pfister Park, east edge of Newcastle	
Dixon	<u>Lewis and Clark Camp Sites: Aug 23-25, 1804</u>	Nebr. 12, 3 miles west of Newcastle	#344
Dixon	<u>Ponca</u>	Main Street, Ponca	#149
Dodge	<u>The Great Platte River Route West</u>	U.S. 30, Fremont State Lake, 4 miles west of Fr	
Dodge	<u>Pawnee Villages</u>	U.S. 77, south side of Platte River N 88	
Dodge	<u>Millar-Sloss Pioneer Cemetery</u>	.5 mile west of Jct. Nebr. 79/U.S.30 and 25 mil	
Dodge	<u>Webster</u>	Intersection of County Road K and Nebraska 79, 1	

Douglas	<u>Winter Quarters</u>	U.S. 73/75, Florence Park, Omaha	#19
Douglas	<u>Trans-Mississippi and International Exposition</u>	Heartland of America Park, Omaha	#400
Douglas	<u>Lewis and Clark Camp Site: July 27, 1804</u>	Central Park Mall, Omaha	#340
Douglas	<u>Crook House</u>	30th and Fort Sts., Fort Omaha in Omaha	#211
Douglas	<u>Fort Atkinson</u>	Nebr. 36, 2 miles west of Bennington	#335
Douglas	<u>Omaha</u>	Ak-Sar-Ben coliseum, Omaha	#155
Douglas	<u>The Bank of Florence</u>	8500 block on No. 30th St., Omaha	#50
Douglas	<u>Platte River History</u>	Jct. of U.S. 275/Nebr. 36, 6 miles northwest of	
Douglas	<u>Central High School</u>	124 N. 20th St., Omaha	#220
Douglas	<u>Malcolm "X"</u>	3448 Pinckney St., Omaha	#310
Douglas	<u>Fort Omaha</u>	30th and Fort Sts., Fort Omaha in Omaha	
Douglas	<u>Shipley Cemetery</u>	Ponca Hills Fire Station, 12919 Ponca Rd., Omaha	
Douglas	<u>Father Flanagan's Boys' Home</u>	(near) U.S. 6 and Flanagan Blvd., Boys Town Camp	
Douglas	<u>Ak-Sar-Ben Field and the U.S. Air Mail</u>	72nd and Mercy Rd., Omaha	
Douglas	<u>Boettger Farm</u>	.5 mile east of 96th St. and Nebr. 36, north of	
Douglas	<u>William Henry Jackson</u>	W. Dale Clark Library, 15th and Douglas Sts., On	
Douglas	<u>Creighton University</u>	On the campus, Omaha	#11
Douglas	<u>Trans-Mississippi and International Exposition</u>	Kountze Park, Omaha	#406
Douglas	<u>Forest Lawn Memorial Park</u>	40th and Forest Lawn Ave., Omaha (Centennial Ga:	
Douglas	<u>Capitol Hill</u>	20th and Dodge Sts., Omaha	#30
Douglas	<u>The Florence Mill</u>	Nebr. 36, west of the Mormon Bridge	#81
Douglas	<u>Duchesne Academy</u>	3601 Burt St., Omaha	#267
Douglas	<u>Historic Prospect Hill--Omaha's Pioneer Cemetery</u>	33rd and Parker Sts., Omaha	#287
Douglas	<u>Oto Indians</u>	Two Rivers State Recreation Area	#281
Douglas	<u>Chief Standing Bear</u>	Standing Bear Lake, 147th and Fort Streets	#
Douglas	<u>Captain William Clark and Private Reuben Field</u>	Lewis and Clark Landing, Adjacent to Omaha Conv	
Dundy	<u>Texas Trail Canyon</u>	U.S. 34, 4 miles east of Haigler	#126
Dundy	<u>General Custer in Nebraska</u>	U.S. 34, south edge of Benkelman	#22
Fillmore	<u>The Blizzard of 1888</u>	Nebr. 41, .75 mile north of Milligan	#247
Fillmore	<u>Fairmont Army Air Field</u>	U.S. 81, 2.5 miles south of Fairmont	#360
Fillmore	<u>Fairmont Army Air Field</u>	U.S. 6, 1 mile east of Fairmont	#381
Fillmore	<u>Fairmont Creamery Company</u>	Main Street, 1 block south of U.S. 6, Fairmont	
Fillmore	<u>Fillmore County, 1871-1971</u>	Ninth and G Sts., Geneva	#132
Fillmore	<u>1879 Exeter 1979</u>	Exeter	#278
Fillmore	<u>Stockholm Lutheran Church and Swedish Cemetery</u>	Nebr. 74, 2 miles west of Shickley	#399
Fillmore	<u>The Pioneer Chapel and Cesky Bratri Cemetery</u>	Nebraska 41, one mile west of the Milligan Corn	
Franklin	<u>Franklin County</u>	County Courthouse, Franklin	#140
Franklin	<u>Franklin Academy</u>	City Park, Franklin	#329
Frontier	<u>Frontier County, Stockville</u>	Nebr. 18, 1 mile west of Stockville	#84
Frontier	<u>Ingham</u>	Nebr. 23, 5 miles east of Moorefield	#286
Furnas	<u>The Small Schoolhouse</u>	Edison	#189
Furnas	<u>Nebraska's Flying Doctor</u>	Nebr. 89, Beaver City	#199
Furnas	<u>The Republican River Flood of 1935</u>	U.S. 136, .5 mile west of Oxford	#39
Furnas	<u>Burtons Bend</u>	U.S. 6/34, Holbrook	#83
Furnas	<u>Norwegian Lutheran Church</u>	1.5 miles west, 2 miles north of Holbrook	#14
Gage	<u>Homestead Movement</u>	U.S. 77, Beatrice Airport	#7
Gage	<u>The Oto and Missouri Agency</u>	Nebr. 8, south edge of Barneston	#214
Gage	<u>The Oketo Cutoff</u>	Nebr. 8, milepost 74.6, west of Odell	#413
Garden	<u>Windlass Hill Pioneer Homestead</u>	U.S. 26, Ash Hollow State Park	#130
Garden	<u>Ash Hollow</u>	Ash Hollow State Historical Park visitor center	
Garden	<u>Ash Hollow Geology</u>	Ash Hollow State Park visitor center, southeast	
Garden	<u>John Hollman Grave</u>	Nebr. 27, 2 miles south of Oshkosh	#246
Garden	<u>Battle of Blue Water</u>	U.S. 26, 1.5 miles west of Lewellen	#403
Garfield	<u>The North Loup Project</u>	Calamus Dam, 2 miles west, 4 miles north of Bur	
Garfield	<u>Garfield County</u>	County Courthouse, Burwell	
Garfield	<u>The Calamus Valley</u>	Calamus Reservoir, visitor center overlook, nor	
Garfield	<u>The Easter Blizzard of 1873</u>	Nebr. 91, 2 miles east of Burwell	#374
Garfield	<u>The Pebble Creek Fight</u>	Nebr. 91, 2 miles east of Burwell	#373
Garfield	<u>Kamp Kaleo</u>	Nebr. 91, 1 mile east of Burwell	#103
Gosper	<u>George E. Johnson</u>	U.S. 283, Johnson Lake	#210
Greeley	<u>Chalk Mine (area closed and marker removed)</u>	Nebr. 11, 2 miles south of Scotia	#144
Hall	<u>Sandhill Cranes</u>	U.S. 281 and Platte River Road	#389
Hall	<u>St. Joseph and Grand Island Railroad</u>	Pine St., Doniphan	#387
Hall	<u>Martin Brothers</u>	Crane Meadows Center, south side I-80, Alda into	
Hall	<u>Original Townsite of Wood River</u>	U.S. 30, 3 miles west of Wood River	#336
Hall	<u>The Old Fort Kearny (Nebraska City) Road</u>	Lot 10, Amick Acres subdivision	#388
Hall	<u>Conflict of 1867</u>	U.S. 281, west of Doniphan	#259
Hall	<u>The Mormon Trail</u>	Stuhr Museum, south of Grand Island, Wayside Pa	
Hall	<u>LaGrande Isle</u>	Stolley Park, Grand Island	
Hall	<u>Joseph E. Johnson and The Huntsman's Echo</u>	Railroad Park, Main St. and U.S. 30, Shelton	
Hall	<u>Grand Island</u>	I-80 rest area, eastbound, 2.5 miles east of In	
Hall	<u>The O.K. Store</u>	Fonner Park, Grand Island	#54
Hall	<u>Pioneer Park</u>	Pioneer Park, Grand Island	#141
Hall	<u>Grand Island</u>	I-80 rest area, westbound, 1.5 miles west of In	
Hall	<u>The Lincoln Memorial Highway</u>	Pioneer Park, West Second and Cleburn Sts., Gra	
Hall	<u>B-17 Crash, 1943</u>	Husker Highway and 150th Road, Wood River	#4

Hamilton	<u>Deep Well Irrigation</u>	U.S. 34, city park, Aurora #41
Hamilton	<u>Farmers' Valley Cemetery</u>	5 miles east and .5 mile north of Stockham #31
Hamilton	<u>Hamilton County Courthouse</u>	County Courthouse, Aurora #377
Harlan	<u>Pioneer Crossing</u>	Nebr. 4, 3 miles west of Ragan #38
Hayes	<u>The Grand Duke Alexis</u>	5 miles east and 2 miles north of Hayes Center
Hitchcock	<u>Culbertson, First Hitchcock County Seat</u>	City Park, Culbertson #95
Hitchcock	<u>The Leavenworth and Pike's Peak Express</u>	City Park, Stratton #352
Hitchcock	<u>Stone Church</u>	Nebr. 17, 8.5 miles south and .25 mile east of
Hitchcock	<u>Massacre Canyon</u>	U.S. 34, 3.5 miles east of Trenton #8
Holt	<u>U.S. Highway 281</u>	U.S. 281, 8.5 miles south of O'Neill #228
Holt	<u>O'Neill</u>	U.S. 20, 2 miles southeast of O'Neill #78
Holt	<u>The Savidge Brothers, Aviation Pioneers</u>	U.S. 275, east edge of Ewing #76
Holt	<u>O'Neill, Irish Capital of Nebraska</u>	U.S. 20, O'Neill #129
Howard	<u>St. Wenceslaus Cemetery</u>	1 mile south, .75 mile west, Jct. Nebr. 11/Nebr
Howard	<u>Grover Cleveland Alexander</u>	U.S. 281, 2 miles south of St. Paul #317
Howard	<u>Dannebrog, Nebraska's Danish Capital</u>	Columbia Hall, Nebr. 58, Dannebrog #411
Jefferson	<u>Plymouth</u>	NW1/4, S21, T4N, R1E #351
Jefferson	<u>1880 Diller 1980</u>	City Park, east side of Nebr. 103, Diller #241
Jefferson	<u>The Smith Limekiln</u>	River Road, northwest of Fairbury #121
Jefferson	<u>Jansen</u>	U.S. 136, 1 mile west of Jansen #133
Johnson	<u>Cook</u>	Cook Park, corner of Main and Third Sts. and th
Johnson	<u>Tecumseh</u>	City Hall, Tecumseh #203
Kearney	<u>Fort Kearny</u>	Fort Kearney State Historical Park #229
Kearney	<u>Axtell, Nebraska</u>	U.S. 6/34, City Park, Axtell #292
Kearney	<u>The Burlington and Missouri River Railroad</u>	Nebr. 10, 1.5 miles south of Platte River bridge
Kearney	<u>Walker's Ranch</u>	Nebr. 44, .5 mile north of Wilcox #212
Kearney	<u>The Great Platte River Road</u>	Nebr. 44, near Jct. Nebr. 50A #364
Kearney	<u>Dobytown</u>	Nebr. 50A, 2 miles west of Fort Kearny State Hi
Kearney	<u>1872 Lowell 1972</u>	South of Interstate exit 285, Lowell townsite
Keith	<u>Court House Rock, Chimney Rock, and Scott's Bluff</u>	I-80 rest area, westbound, Roscoe #99
Keith	<u>Ash Hollow</u>	I-80 rest area, westbound, Roscoe #98
Keith	<u>Ogallala</u>	I-80 rest area, westbound, Roscoe #97
Keith	<u>California Hill</u>	U.S. 30, 5 miles west of Brule #313
Keith	<u>Cowboy Capital</u>	U.S. 30, City Park, Ogallala #5
Keith	<u>Boot Hill</u>	North part of Ogallala #24
Kimball	<u>Nebraska</u>	I-80 rest area, eastbound, Bushnell #166
Kimball	<u>Kimball County</u>	I-80 rest area, eastbound, Bushnell #165
Knox	<u>Lewis and Clark Camp Site: Sept 2, 1804</u>	County road near Lewis and Clark SRA, overlookin
Knox	<u>The Ponca Indians (replaced 62)</u>	Nebr. 12, near entrance to Niobrara State Park
Knox	<u>The Sage Brothers</u>	Nebr. 12, 1.5 miles west of Niobrara #101
Lancaster	<u>Giant Glacial Boulder</u>	14th and Manatt Sts., Lincoln #21
Lancaster	<u>1776 Bicentennial Prairie Marker 1976</u>	U.S. 77 rest area, 2 miles east of Sprague #11
Lancaster	<u>Civilian Conservation Corps Co. 2738</u>	Main Street, Denton #31
Lancaster	<u>Fairview: Home of William Jennings Bryan</u>	Bryan/LGH Medical Center East, 49th and Sumner
Lancaster	<u>The Lincoln Regional Center</u>	Lincoln Regional Center, Van Dorn and Folsom St
Lancaster	<u>Nebraska Statehood Memorial</u>	1627 H St., Lincoln
Lancaster	<u>Pershing Rifles</u>	Military and Naval Science Building, UNL, 14th
Lancaster	<u>Nine-Mile Prairie Memorial</u>	Former air base ammunition depot, west of N.W.
Lancaster	<u>Nine-Mile Prairie</u>	Former air base ammunition depot, west of N.W.
Lancaster	<u>Lincoln Aviation Personalities before 1930</u>	Lincoln Municipal Airport #224
Lancaster	<u>Lincoln Army Air Field/Air Force Base</u>	Bowling Lake Park, Lincoln Air Park #376
Lancaster	<u>Lincoln's Emergence as an Aviation Center</u>	Lincoln Municipal Airport #225
Lancaster	<u>The City of Lincoln</u>	I-80 rest area, westbound, Lincoln #257
Lancaster	<u>The North Bottoms</u>	Tenth and Charleston Sts., Lincoln #396
Lancaster	<u>Lincoln's Founding Block</u>	S.W. corner of 10th and Q Sts., Lincoln #254
Lancaster	<u>The Ferguson House</u>	700 So. 16th St., Lincoln #253
Lancaster	<u>The University of Nebraska</u>	University of Nebraska campus, 11th and S Sts.,
Lancaster	<u>The Lewis-Syford House</u>	700 No. 16th St., Lincoln #231
Lancaster	<u>County-City Building</u>	City County Building, Lincoln #105
Lancaster	<u>Nebraska's Prairie Plants</u>	I-80 rest area, westbound, Lincoln #256
Lancaster	<u>Crounse</u>	Area 6, Branched Oak State Recreation Area, Ray
Lancaster	<u>The Nebraska State Historical Society</u>	1500 R Street, Lincoln #436
Lincoln	<u>Fort McPherson</u>	Lincoln County Historical Society Museum, 2403 I
Lincoln	<u>Crossing the Overland Trail</u>	I-80 rest area, eastbound, Sutherland #109
Lincoln	<u>Road Ranches Along the Platte</u>	I-80 rest area, eastbound, Brady #194
Lincoln	<u>Fort McPherson</u>	U.S. 30, west edge of Maxwell #14
Lincoln	<u>Fort McPherson and North Platte</u>	I-80 rest area, westbound, Brady #193
Lincoln	<u>Sioux Lookout</u>	Southeast of North Platte (destroyed) # 89
Lincoln	<u>Scout's Rest</u>	Buffalo Bill Ranch State Historical Park, North
Lincoln	<u>The Great Platte River Road</u>	I-80 rest area, westbound, Sutherland #111
Lincoln	<u>The Great Platte River Road</u>	I-80 rest area, eastbound, Sutherland #110
Loup	<u>Valleyview</u>	Valleyview Flats area at Calamus Reservoir Stat
Loup	<u>Harrop</u>	U.S. 183, 18 miles north of Taylor #375
Madison	<u>Battle Creek</u>	Nebr. 121, north edge of Battle Creek #94
Madison	<u>Barnes Reserve Cemetery</u>	U.S. 81, in Madison #251

Madison	<u>Verges Park</u> (Norfolk Brick and Tile Company)	Verges Park, Norfolk	#356
Madison	<u>Meadow Grove</u>	U.S. 275 wayside area, east of Meadow Grove	#
Merrick	<u>Lone Tree</u>	U.S. 30, Central City	#
Merrick	<u>The Mormon Trail</u>	Jct. U.S. 30/Nebr. 92	#
Morrill	<u>Camp Clarke Bridge</u> and Sidney Black Hills Trail	U.S. 26, 3 miles west of Bridgeport	
Morrill	<u>Chimney Rock</u>	Nebr. 92, southwest of Bayard (replaced by 152)	
Morrill	<u>Courthouse and Jail Rocks</u>	Nebr. 88, .3 mile north of Seybolt Park	#371
Morrill	<u>Narcissa Whitman</u>	U.S. 26, 8 miles east of Broadwater	#295
Morrill	<u>Chimney Rock</u> (replaced 1)	Nebr. 92, southwest of Bayard	#152
Morrill	<u>Amanda Lamme</u>	U.S. 385, southeast of Bridgeport	#349
Morrill	<u>Bridgeport, Nebraska</u>	Near U.S. 385 / U.S. 26 Junction	#418
Nance	<u>Mormon Pioneer Campsite</u>	Nebr. 14, 2 miles south of Fullerton (replaced 1)	
Nance	<u>Pawnee</u>	Nebr. 39, city park, Genoa	#18
Nance	<u>Mormon Pioneer Campsite</u> (replaced 27)	Nebr. 14, 2 miles south of Fullerton	#162
Nance	<u>Genoa: 1857-1859</u>	Nebr. 39, City Park, Genoa	#104
Nemaha	<u>Lewis and Clark Campsite: July 15, 1804</u>	Brownville State Recreation Area	#338
Nemaha	<u>Brownville</u> (replaced 64)	U.S. 136, City Park, Brownville	#159
Nemaha	<u>Muir House</u>	U.S. 136, Brownville 52	
Nemaha	<u>Peru State College</u>	On the campus, Peru	#80
Nemaha	<u>Half-Breed Tract</u>	U.S. 136, .5 mile east of Auburn	#58
Nemaha	<u>The Nebraska State Teachers' Association</u>	Brownville Public School	#417
Nuckolls	<u>1864 Indian Raids</u>	Nebr. 14, 9 miles north of Nelson	#28
Nuckolls	<u>Indian Captives</u>	Oregon Trail Park, Oak	#282
Nuckolls	<u>Skirmish at Spring Creek</u>	U.S. 136, 2 miles west of Ruskin	#330
Nuckolls	<u>Original Townsite of Oak</u>	2 miles southeast of Oak on Oak-Ruskin Road, ne.	
Otoe	<u>Old Fort Kearny</u>	East Central Ave., Nebraska City	#36
Otoe	<u>Nebraska City-Fort Kearny Cutoff</u>	Nebr. 2, northwest edge of Syracuse	#143
Otoe	<u>Mayhew Cabin 1852</u>	Nebr. 2, John Brown Park, Nebraska City	#244
Otoe	<u>1882 Talmage, Nebraska 1982</u>	Talmage	#277
Otoe	<u>Arbor Lodge</u>	Arbor Lodge, 2nd and Centennial Sts., Nebraska	
Otoe	<u>Nebraska City</u>	U.S. 75 rest area, northwest edge of Nebraska C.	
Otoe	<u>Indian Treaty Monument</u>	U.S. 73/75, c. 3 miles west and north of courth	
Otoe	<u>The First United Methodist Church of Nebraska City</u>	1023 First Avenue, Nebraska City	#438
Pawnee	<u>Village of Steinauer</u>	3 miles east of Steinauer	#184
Perkins	<u>Wild Horse Spring</u>	Nebr. 61, 4.5 miles north of Grant	#29
Perkins	<u>The Texas Trail</u>	Nebr. 23, east edge of Madrid	#128
Phelps	<u>Bertrand 1885-1985</u>	City Park, Bertrand	#303
Phelps	<u>Phelps County</u>	County Courthouse, Holdrege	#154
Phelps	<u>Funk, Nebraska</u>	Harmony Park, Funk	#323
Phelps	<u>Historic Platte Valley</u>	U.S. 183, 2 miles south of Platte River bridge	
Phelps	<u>Site of Old Sacramento</u>	4 miles south and 4 miles east of Holdrege	#1
Phelps	<u>Atlanta Prisoner-of-War Camp</u>	U.S. 6/34, 1 mile northeast of Atlanta	#2
Phelps	<u>First Site of Bethel Lutheran Church and Cemetery</u>	3 miles east of Holdrege on U.S. 6, 1/2 mile so	
Pierce	<u>Old Willow Creek Bridge</u>	City Park, Pierce	#401
Pierce	<u>Gilman Park</u>	City Park, Pierce	#306
Pierce	<u>The Meridian Highway</u>	Highway 13 & 552 Avenue, South of Pierce	#434
Platte	<u>Agricultural Park</u>	County Courthouse, Columbus	#139
Platte	<u>The Villasur Expedition, 1720</u>	Pawnee Park, Columbus	#305
Platte	<u>Duncan, 1871-1971</u>	U.S. 30, Duncan	#127
Platte	<u>West Hill Community</u>	West Hill Cemetery, 5.5 miles north and 6 miles	
Platte	<u>The North Brothers</u>	U.S. 81, adjacent to Chamber of Commerce, Colum	
Platte	<u>Andrew Jackson Higgins</u>	U.S. 81, West Pawnee Park, Columbus	
Platte	<u>Alfred Maximilian Gruenther: 1899-1983</u>	City Auditorium, 315 4th Street, Platte Center	
Polk	<u>Stromsburg - The Swede Capital of Nebraska</u>	Buckley Park (camping area), on U.S. 81, south	
Polk	<u>Osceola and The Early Pioneer: 1867-1967</u>	Nebr. 92, east edge of Osceola	#57
Polk	<u>Village of Polk</u>	City Park, Nebraska 66	#415
Red Willow	<u>George William Norris, 1861-1944</u>	Norris Ave., city park, McCook	#25
Red Willow	<u>Pawnee Woman's Grave</u>	City Park, Indianola	#206
Red Willow	<u>McCook Army Air Base</u>	7 miles north and 3 miles west of McCook	#347
Red Willow	<u>Mallalieu University</u>	U.S. 6/34, Bartley	#135
Richardson	<u>Missouri River</u>	U.S. 159, east side of Rulo	#238
Richardson	<u>First Oil Well</u>	Nebr. 8, 3 miles west of Falls City	#79
Richardson	<u>Lewis and Clark Camp Site: July 13, 1804</u>	U.S. 159, east side of Rulo	#337
Richardson	<u>Point of Beginning, Public Land Surveys of the</u>		
	<u>Sixth Principal Meridian</u>	Rulo-White Cloud Road at State Line	#367
Rock	<u>Spring Valley Park</u>	U.S. 20, Newport	#106
Saline	<u>Nebraska Chautauquas</u>	Tuxedo Park, Crete	#175
Saline	<u>Sgt. Leodegar Schnyder</u>	Nebr. 74, northeast corner of Tobias	#136
Saline	<u>Czech Capital</u>	Jct. Nebr. 103/41, Wilber	#35
Saline	<u>Swan City</u>	Nebr. 103, 2 miles northwest of DeWitt	#48
Sarpy	<u>Bellevue Log Cabin</u>	19th and Hancock Sts., Bellevue	#186
Sarpy	<u>First Presbyterian Church</u>	Bellevue Blvd. and 20th Ave., Bellevue	#53
Sarpy	<u>Springfield Community Hall</u>	104 Main St., Springfield	#410
Sarpy	<u>Gretna Fish Hatchery</u>	South of Gretna and the Ak-Sar-Ben Aquarium, in	

Sarpy	<u>Bellevue Depot</u> (removed in 1987)	Haworth Park, Bellevue	#187
Sarpy	<u>The Great Platte Valley</u>	I-80 rest area, westbound, Melia Hill	#61
Sarpy	<u>Oto Mission</u>	U.S. 78/75, south of Bellevue	#10
Sarpy	<u>Bellevue</u>	U.S. 73/75, south of Bellevue	#12
Sarpy	<u>Fontenelle Bank</u> - County Courthouse (replaced 51)	Nebr. 370, Main and Mission Sts., northwest cor.	
Saunders	<u>The Yutan Oto Indian Village</u>	Nebr. 92, just south of Yutan	#353
Saunders	<u>The Armour and Company Icehouse</u>	Memphis State Recreation Area, Memphis	#409
Saunders	<u>Saunders County</u>	County Courthouse, Wahoo	#82
Saunders	<u>The Ox-Bow Trail</u>	U.S. 6, Lincoln City Water Treatment Plant, Ash.	
Scotts Bluff	<u>Scottsbluff Army Airfield</u>	Scotts Bluff County Airport	#365
Scotts Bluff	<u>Map of Horse Creek Treaty Grounds</u>	U.S. 26, 3 miles southeast of Henry	#369 C
Scotts Bluff	<u>Fort Mitchell</u> , 1864-1867	U.S. 92, 4 miles northwest of Jct. with Nebr. 7	
Scotts Bluff	<u>The Great Smoke</u>	U.S. 26, 3 miles southeast of Henry	#369 A
Scotts Bluff	<u>Rebecca Winters</u>	U.S. 26, 2 miles east of Scottsbluff	#21
Scotts Bluff	<u>The Horse Creek Treaty</u>	U.S. 26, 3 miles southeast of Henry	#369 B
Seward	<u>Seward</u> , Nebraska's Fourth of July City	County Courthouse, Seward	#221
Seward	<u>Tall Grass Prairie</u>	I-80 rest area, westbound, Goehner	#179
Seward	<u>Beaver Crossing</u> , Nebraska	City Park, Beaver Crossing	#363
Seward	<u>The Beaver Crossing Mill</u>	City Park, Beaver Crossing	#394
Seward	<u>The Big Blue River</u>	I-80 rest area, eastbound, Milford	#180
Seward	<u>Plum Creek Prairie</u>	U.S. 34, east edge of Seward	#421
Sheridan	<u>Camp Sheridan</u> and Spotted Tail Agency	U.S. 20, Hay Springs	#354
Sheridan	<u>Mari Sandoz</u> , 1896-1966	Nebr. 27, 30 miles south of Gordon	#85
Sheridan	<u>Rushville</u>	Main Street Park, Rushville	#390
Sheridan	<u>Spade Ranch</u>	Nebr. 27, Ellsworth	#283
Sheridan	<u>Antioch</u> : Potash Boom-Town	Nebr. 2, west of Antioch	#213
Sherman	<u>Dead Horse Creek</u>	Nebr. 92, southwest of Loup City	#322
Sherman	<u>Loup City Riot</u> , 1934	County Courthouse, Loup City	#393
Sherman	<u>Austin</u>	Nebr. 58, mile 38.4, between Loup City and Rock	
Sioux	<u>Fort Laramie-Fort Robinson Trail</u>	Nebr. 29, 11 miles south of Harrison	#158
Sioux	<u>Village of Harrison</u>	U.S. 20 and Kate St., Harrison	#302
Sioux	<u>Coffee Siding</u>	U.S. 20, 1 mile east of Wyoming line	#260
Sioux	<u>The Cheyenne Outbreak</u>	U.S. 20, 1 mile southwest of Fort Robinson	#8
Stanton	<u>Stanton County</u>	U.S. 275, 3 miles west of Pilger	#9
Thayer	<u>Friedensau</u>	U.S. 136, 2 miles east of Jct. Nebr. 5, near De	
Thayer	<u>The Forty-Niner Trail</u>	Thayer County Museum, Belvidere	#235
Thayer	<u>Bruning Army Air Field</u>	Nebr. 4, mile 118.5, southeast of Bruning	#397
Thayer	<u>Thayer County</u>	Thayer County Courthouse, Hebron	#433
Thomas	<u>The Sandhills</u>	Jct. U.S. 83/Nebr. 2, east of Thedford	#63
Thurston	<u>Winnebago Scouts</u>	U.S. 73, near the Winnebago Agency, Macy	#44
Thurston	<u>Omaha Tribe</u>	Near Community Building, Macy	#71
Thurston	<u>Susan LaFlesche Picotte Memorial Hospital</u>	U.S. 77, Walthill	#385
Thurston	<u>Susan LaFlesche Picotte Memorial Hospital</u>	In Walthill, at the site	#386
Valley	<u>Calamus Townsite</u>	2.5 miles north of Elyria	#293
Valley	<u>Arcadia Centennial</u> , 1885-1985	Nebr. 70, west edge of Arcadia	#298
Valley	<u>Evelyn Sharp</u>	Ord Airport, Ord	#150
Valley	<u>St. Mary's Catholic Church</u>	Nebr. 11, east edge of Elyria,	#355
Valley	<u>Fort Hartsuff State Historical Park</u>	Nebr. 11, 8 miles north of Ord	#230
Valley	<u>Fort Hartsuff</u> , 1874-1881	Nebr. 11, southeast of Elyria	#70
Valley	<u>The Blizzard of 1888</u>	Nebr. 70, 9 miles south of Ord	#66
Washington	<u>Congregational Church of Blair</u>	In Blair	#177
Washington	<u>Fort Atkinson</u>	U.S. 73 in Fort Calhoun	
Washington	<u>Steamboat Bertrand</u>	Iowa U.S. 30, DeSoto National Wildlife Refuge	
Washington	<u>DeSoto Townsite</u>	U.S. 73, OPPD plant north of Fort Calhoun	
Washington	<u>Fort Atkinson</u> (replaced 67)	Fort Atkinson State Historical Park near Fort C.	
Washington	<u>Lewis and Clark Camp Site</u> : July 30 - Aug 2, 1804	Fort Atkinson State Historical Park	#341
Washington	<u>Lewis and Clark Camp Site</u> : Aug 3 - 4, 1804	U.S. 75, 2 miles south of Blair	#342
Washington	<u>Brewster Cemetery</u>	2.5 miles west of U.S. on County Road 26	#420
Wayne	<u>Wayne</u>	Nebr. 35, at airport east of Wayne	#26
Wayne	<u>Wayne State College</u>	Nebr. 15, Wayne	#122
Webster	<u>Benjamin Wagoner Memorial Cemetery</u>	4 miles south on U.S. 281, then 3.75 miles east	
Webster	<u>Republican Pawnee Village</u>	Nebr. 78, Guide Rock	#47
Webster	<u>Grace Episcopal Church</u>	Willa Cather Historical Center, Red Cloud	#26
Webster	<u>Emmanuel Lutheran Church</u> , 1904-1952	8 miles north, 2 miles west, Jct. U.S. 136/Nebr	
Webster	<u>Willa Cather Memorial Prairie</u>	U.S. 281, 6 miles south of Red Cloud	
Webster	<u>Catherland</u> (replaced 40)	Jct. U.S. 281/Nebr. 4, 14 miles north of Red Cl.	
Webster	<u>Red Cloud</u> , 1871-1971	U.S. 281, Red Cloud	
Webster	<u>School District 35, "The Killough School"</u>	7 miles north Guide Rock on Nebr. 78, 2 miles e.	
Webster	<u>Cather Childhood Home</u>	Willa Cather Historical Center, Red Cloud	#26
Webster	<u>Webster County</u> , 1871-1971	U.S. 281,	Red Cloud #12
Webster	<u>Burlington Depot</u>	Willa Cather Historical Center, Red Cloud	#26
Webster	<u>St. Juliana Falconieri Catholic Church</u>	Willa Cather Historical Center, Red Cloud	#26
Webster	<u>Cowles Consolidated School</u>	Fourth and Adams Sts., Cowles	#41
York	<u>Nebraska 4-H Clubs</u> Began in York County	York County Fairgrounds on lawn of 4-H Building.	
York	<u>Henderson</u> , Nebraska 1887-1987	City Park, 14th and Cedar Sts., Henderson	#31

York	<u>Nebraska City - Fort Kearny Cut-Off</u>	I-80 rest area, westbound, York	#174
York	<u>Henderson Mennonite Centennial 1874-1974</u>	Henderson	#169
York	<u>Porcupine Ranch</u>	4.5 miles north of Henderson	#279
York	<u>Nebraska City - Fort Kearny Cut-Off</u>	I-80 rest area, eastbound, York	#173

Fort Atkinson, replaced by #117; #67
Horse Creek Treaty Grounds, replaced by #369 A,B,C; #233
1872 Lowell 1972, replaced by #241; #142
Central Platte Valley, replaced by #181; #73
Brownville, replaced by #159; #64
Ponca Indians, replaced by #237; #62
Fontanelle Bank - County Courthouse, replaced by #163; #51
Catherland, replaced by #107; #40
Central Platte Valley, replaced by #182

For more information, contact:

John Lindahl
Nebraska State Historical Society
P.O. Box 82554
Lincoln NE 68501-2554
402-471-4764

[Return to Research & Publications Main Page.](#)

[NSHS Home](#) | [Search](#) | [Index](#) | [Top](#)

<http://www.nebraskahistory.org/publish/markers/markers/index.htm>

Last updated **4 June 2004**

For questions or comments on the website itself, email web@nebraskahistory.org

Nebraska State Historical Society - P.O. Box 82554, 1500 R Street, Lincoln, NE 68501

©2004 All Rights Reserved.



HISTORIC PRESERVATION

Wisconsin Historical Markers

Wisconsin historical markers identify, commemorate and honor the important people, places, and events that have contributed to the state's rich heritage. The Wisconsin Historical Markers Program is a vital education tool, informing people about the most significant aspects of Wisconsin's past. The Society's Division of Historic Preservation administers the Wisconsin Historic Markers Program. Applications are required for all official State of Wisconsin historical markers and plaques.

How to obtain a marker for your area:

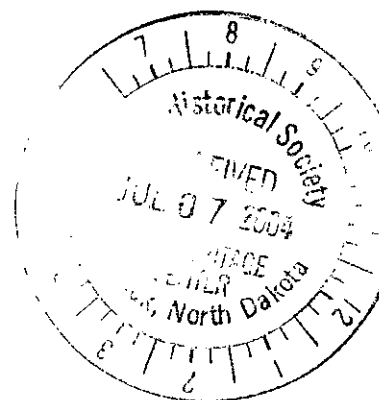
- * Creating a Marker
- * Apply for a Historical Marker
- * Historical Marker Price List (PDF, 73KB)
- * List of Historical Markers(PDF, 154KB)

In order to read these forms you will need Adobe Acrobat Reader. If you do not already have this tool, you can find information in our help section.

- * Frequently Asked Questions



©2003 Wisconsin Historical Society 816 State Street, Madison, WI 53706





HISTORIC PRESERVATION

Creating a Marker

Research the Subject:

A thoroughly researched subject will result in a well-documented, comprehensive text. Marker subjects should be approached with the following questions in mind as they relate to the individual marker:

- Who was associated with the subject?
 - Include their names, birth and death dates, chronology of the important events in their lives, and their significant contributions.
- What events occurred at this particular time or place?
- Of those events, which were the most significant?
- What groups of people were associated with this event?
- When did the event occur?
- What is the subject's time span of significance?
- How did the historical event develop?
- What influence did the marker subject or event have on the national, state, or local community?
- Why is the marker subject important to the community, state, or nation?
- Why is it special, unusual, or significant?
- Are all statements of fact and dates documented with footnotes?
- Avoid words like "first," "oldest," "unique," or "only" unless there is irrefutable documentation.

Local libraries, local historical societies, and local newspapers are excellent sources for information, as are the Library and the Archives of the State Historical Society of Wisconsin.

Choosing the Marker or Plaque:

Wisconsin historical markers are designed to be easily recognizable as official State of Wisconsin markers and plaques, with the badger, the state symbol of Wisconsin, embossed at the top of the Marker. Official State of Wisconsin markers are made of cast aluminum, have raised cream-colored letters on a brown background and are available in four sizes. The largest marker measures 54"x72" and has about a 140 word capacity. The next size marker measures 30"x42" and has about a 110 word capacity. The next marker is medium size, measures 24"x36", and has about an 80 word capacity. The smallest marker measures 16"x24" and has about a 40 word capacity. Official State Register of Historic Places plaques are similar in design and material to the state markers and are available in two sizes. These plaques are only intended for placement on properties listed in the State Register of Historic Places. The first is a standardized 10"x12" plaque with raised and polished aluminum letters on a black background. The second is a customized 10"x15" State Register of Historic Places plaque with the name and date of the historic property and has raised cream letters on a brown background.





HISTORIC PRESERVATION

Apply for a Historical Marker

To apply for a historical marker, download and print the application form (Adobe Acrobat format) and follow the step-by-step guide below

→ **Historic Markers Application Form(PDF, 23KB)**

In order to read this form you will need Adobe Acrobat Reader. If you do not already have this tool, you can find information in our help section. you can download it free of charge from the Adobe Web site.

Step by Step Guide to Completing the Application Form

Check the appropriate box indicating whether the application is for a historical marker or a State Register of Historic Places plaque.

1. Name

1. For a historical marker, the name of the historic property, person, site, or event is required in the application form. Be as specific as possible when naming your subject.
2. For a State Register of Historic Places plaque, name the property according to its listing name in the State Register of Historic Places; include the construction date of the building or the date of significance of the property. Please provide the address and historic district name, if applicable.

2. Location

The location of the marker should indicate exactly where the marker will be placed. The description of the proposed marker's geographic location should include the name of the property, if known. The address of the proposed marker location must be exact, including the number and street, city or village, and county. For a rural property, include the nearest rural roads, section, township, county, and a photocopied map showing the proposed marker location. The location of the marker or plaque should be one that is visible and accessible to the public and located in proximity to its subject.

3. Classification

The classification of site, property, or place to be marked indicates (A) the ownership of the property and (B) the marker subject category.

1. Determine whether the property is in the public domain and is owned by local, state, or federal government, or if it is privately owned.
2. Classify the plaque or marker subject by type and determine which classification is most appropriate for the subject matter.
 1. For State Register of Historic Places plaques, check the box labeled "property is listed in State Register of Historic Places."
 2. For historical markers check the one classification box that best fits the significance of the marker. Marker classifications are defined as follows:
 1. A property listed in the State Register of Historic Places is a building or site that has been determined by the State Historical Society of Wisconsin to be an important resource contributing to the history of the nation, state, or locality and officially entered in the State Register of Historic Places;
 2. An important historic event is a significant past occurrence that is verifiable;
 3. A historic person is a deceased individual recognized in the state

- as contributing to its history on a local, state, or national level;
4. A historic district is a defined geographical area of historic buildings and sites listed in the local, state or federal registers of historic places;
5. A historic building is at least 50 years old and must retain enough physical integrity to convey the significant qualities of the building described in the marker text;
6. An archaeological site is a prehistoric or historic site, generally earth-covered or water-covered, that is significant;
7. Geology includes significant aspects of the physical formation of the state's topography;
8. Natural history covers significant aspects of the biology and botany of the state;
9. Ethnic associations are the significant cultural aspects of a group of people whose traditions or activities have contributed to the history of the state;
10. Legends are stories that are unverifiable but have been established and accepted as significant contributions to the state's history and culture.

4. Owner of the property

Owner of the property is the person or agency that has legal title to the property on which the marker is to be erected. The information should include the owner's name, street and number, city or village, state, zip code and telephone number.

Check with the property owner to secure permission to erect the marker at the location you have chosen. If the marker is to be located on public property, provide the name of a contact person, his or her telephone number and the agency or public body that he or she represents.

If the marker is to be located on private property, please send an accompanying approval letter from the property owner stating that you have permission to erect the marker at this location, unless the applicant is the property owner.

5. Type and size of plaques and markers.

There are two types of plaques and four types of markers available. The first is a standardized 10"x12" plaque which states that the property is listed in the State Register of Historic Places. The second is a 10"x15" plaque that states the property is listed in the State Register but also includes the historic property name and date of construction. The third is a small marker that provides space for about 40 words of text and is 16"x24". The fourth marker provides space for about 80 words and is 24"x36". The fifth is a 30"x42" marker that provides space for about 110 words of text. The sixth is a large marker, 54"x72", and provides space for about 140 words of text.

6. Funding sponsor of the marker or plaque

The cost and installation of the marker is the responsibility of the applicant or sponsor. The name and address of the individual or organization funding the marker must be included. Payment is requested after the marker is ordered.

7. Maintenance of the marker or plaque.

It is the responsibility of the sponsor to maintain the erected marker. The applicant must designate who will be responsible for future maintenance of the marker and include the name, address, and telephone number of the responsible person, agency, or unit of government.

If you are requesting a State Register of Historic Places Plaque, do not answer questions 8 through 10.

8. Statement of significance

This is the most important section of the historical marker application. In this section,

the applicant states why the marker subject is significant to Wisconsin history and documents the subjects importance on a national, state or local level. The applicant should state the classification or category of the marker subject, declaring it a site, building, district, person, ethnic association, event, legend, or natural or geological phenomenon. The information in the Statement of Significance should be as specific as possible and relate directly to the subject of the marker. The Statement of Significance must be fully documented. Statements of fact must be footnoted. Photocopies of cited passages listed in the bibliography should be attached to the application form. Photographs that describe and document the marker subject should also be included with the application. Materials become a permanent part of the marker file and will not be returned.

9. Major bibliographic references

This should include the most important sources used for developing and documenting the narrative history of the marker subject. The applicant should write a full citation for each reference, specifying author's name, title of publication, place of publication, publisher and date.

10. Suggested marker text

The suggested marker text is the inscription as it might appear on the marker. The applicant should draft a preliminary marker text. The Historical Markers Coordinator will then work with the applicant to edit this draft text until a final version is agreed upon.

11. Application submitted by

If the applicant is submitting the form as an agent for a sponsoring organization, he or she also should include the organization's name, address, and telephone number. The applicant must sign and date the form.

After the Application Submission

After an acceptable text is finalized the State Historical Society of Wisconsin orders the historic marker. It is shipped directly to the applicant along with a bill. Delivery time is approximately eight to ten weeks.





HISTORIC PRESERVATION

Frequently Asked Questions

How many official Wisconsin historic markers are erected in the state?

There are more than 470 official state markers in Wisconsin that carry approved historical inscriptions commemorating sites, individuals, buildings, or events of local, state, or national significance.

What topics qualify for a historical marker?

Markers should describe one of the following aspects of Wisconsin's history: history, architecture, culture, archaeology, ethnic associations, geology, natural history, or legends. Guidance in researching your topic is available [online](#).

Where can I find a list of historical markers in Wisconsin?

History Just Ahead: A Guide to Wisconsin's Historical Markers edited by Sarah Davis McBride, is an award-winning guide to Wisconsin's state markers. This well-illustrated book includes marker texts, historic and current photographs, and is arranged by geographic region.

An on-line database of historic markers provides current information on markers.

Who can apply for a historic marker?

Anybody can apply for a marker as long as the topic addresses an aspect of Wisconsin's history. The applicant must also be able to pay for the cost of the marker, agree to maintain it, and have permission of the landowner where the marker is to be erected.

Do I need to fill out an application for a marker?

An application form must be completed for every historic marker desired. Application forms are available [on-line](#) or may be requested by mail.

How much do markers cost?

Markers are available in a variety of sizes, text fonts, and prices. The historic marker [price list](#) includes descriptions of available sizes and costs.

How long does it take to get a marker?

The marker text requires approval of Wisconsin Historical Society staff. After this approval, the Wisconsin Historical Society will order the marker from the foundry. Generally, the marker is cast and shipped to the applicant 10-12 weeks after the foundry receives the order.

What is the approval process?

Wisconsin Historical society staff review draft marker text prepared by the applicant. Usually draft text needs to be modified and is returned to the applicant with suggestions. Be sure to allow time for approval if you are planning a commemoration for a specific date. Once the Wisconsin Historical Society and the applicant agree on the final version of the text, the marker is ordered.

If a property is listed in the State Register of Historic Places or the National Register of Historic Places, does it automatically receive a plaque?

No. An [application form](#) must be completed for every State Register of Historic Places plaque desired.

National Register of Historic Places plaques are produced by numerous private vendors. Application to the Wisconsin Historical Society is not required. The following web sites

are provided to assist you in locating suppliers. This list is not a recommendation. Other suppliers may exist:

- * Colonial Brass Company
- * Erie Landmark Company
- * Sewah Studios
- * Centec Cast Metal Products (800) 325-0248
- * Healy Brothers Foundry (800) 626-3229

How can I determine if a property is listed in the State Register of Historic Places or the National Register of Historic Places?

The Architecture and History Inventory, or AHI, is a search engine that provides historical and architectural information on approximately 130,000 properties in Wisconsin. The AHI includes all Wisconsin properties (except archeological sites) listed on the State Register of Historic Places or National Register of Historic Places.

I noticed that a marker is missing or damaged, whom should I contact?

To report a marker that is missing or damaged, please contact Joe DeRose. Please provide the title of the marker and its location.

Who manufactures Wisconsin historic markers and State Register of Historic Places plaques?

Sewah Studios produces the Wisconsin historic markers. Standard State Register plaques are manufactured by Colonial Brass Company; those with custom inscriptions are produced by Sewah Studios.

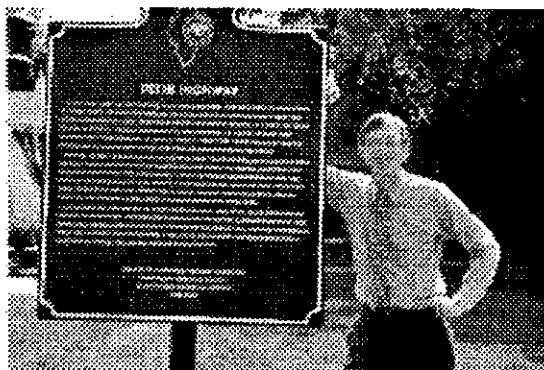


©2003 Wisconsin Historical Society 816 State Street, Madison, WI 53706

Illinois State Historical Society



HISTORICAL MARKERS PROGRAM



Illinois State Historical Society Executive Director Tom Teague with the Dixie Highway historic marker in Homewood.

Since 1934, the Illinois State Historical Society has erected more than 400 historical markers statewide. Subjects of historical significance to Illinois are co-sponsored by local organizations and supporters. The Illinois State Historical Society coordinates the placement and management of historical markers throughout the state.

Those interested in erecting a marker should contact Tom Teague at 217/525-2781, or e-mail the office at ishs@eosinc.com. A marker application form must be filled out and each marker must be sponsored by a group willing to cover the costs of the marker. 100-word markers cost \$1,813.00 and the larger 250-word markers cost \$2,817.00. Applications are reviewed twice a year. Deadlines are March 1 and October 1 of each year.

You may search the list of Illinois' historical markers.

[Historical Marker Application](#)

[Markers list by County](#)

[Markers list by Title](#)

His



The Illinois State Historical Society
Historical Marker Application
210 1/2 South Sixth Street, Suite 200
Springfield, Illinois 62701-1503
Phone: 217-525-2781 Fax: 217-525-2783
e-mail: ishs@eosinc.com web site: www.historyillinois.org

1. Application Date: _____
2. Subject of Proposed Marker: _____
3. Marker Size: (see prices below)
approximately 100 words _____
approximately 250 words _____
4. In 1,000 words or less, give the statewide and/or national significance of the subject and attach it to this application.
5. Documentation:
List and attach photo copies of at least two sources for each of the facts stated in item 4 that are not common knowledge.
At least one source should be primary or original.
6. Give the exact location for installation of proposed marker, including route or street address and attach proof of permission to erect the marker on the proposed site.

7. Please attach a \$500 administrative fee. This fee is part of the overall marker cost and is nonrefundable. It is strongly recommended that you contact the office to determine if your proposed subject is eligible prior to submitting the application and fee.
8. Sponsoring Organization: _____

Contact Name: _____
Address: _____

Phone: _____ Fax: _____
County: _____
9. Other persons or co-sponsors: _____

Agreement: _____

The Illinois State Historical Society will oversee the casting of the marker (of aluminum) in conformance with ISHS design and format. It will contain the name of the sponsoring organization as well as the name of the Illinois State Historical Society and the year in which it was cast in addition to the text. It is the responsibility of the sponsoring organization to erect and mount the marker at the location established in agreement with the Society. The marker will be maintained by the sponsoring organization.

Payment for the marker is due when the text is approved and ready for casting. The Society will notify the sponsoring organization at that time.

It is agreed that the sum of

_____ \$1813.00 per small marker (29" x 40.5")

(includes administrative fee)

_____ \$2817.00 per larger marker (44" x 51")

(includes administrative fee)

will be paid to the Illinois State Historical Society upon notification that text and location are approved.

For Sponsoring Organization:

For ISHS:

Sponsoring Organization

Authorized Signature

Title

Title

For office use only:

Form received: _____

Approvals:

Documentation (approved and dated): ____/____/____

Text (approved and dated): ____/____/____

Date payment received: ____/____/____

Date to foundry: ____/____/____

Mold (approved and date): ____/____/____

Date marker erected: ____/____/____

ISHS - Search Historical Markers Database

Florida Division of Historical Resources

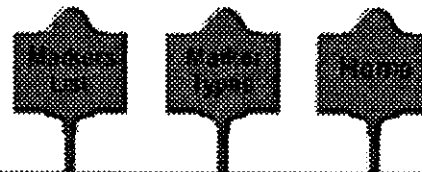
Department of State Menu



myFlorida.com

[Contact Us](#)[Site Map](#)[Search DHR](#)[Go](#)

Florida Historical Markers Program

Historical Markers Of Florida

CRITERIA FOR FLORIDA HISTORICAL MARKERS

The Florida Historical Marker Program recognizes historic resources, persons and events that are significant in the areas of architecture, archaeology, Florida history and traditional culture by promoting the placing of historic markers and plaques at sites of historical and visual interest to visitors. The purpose of the program is to increase public awareness of the rich cultural heritage of the state and to enhance the enjoyment of historic sites in Florida by its citizens and tourists.

To be recognized as either a Florida Heritage Site or Florida Heritage Landmark a resource must meet the following criteria:

FLORIDA HERITAGE SITE

- To qualify as a Florida Heritage Site a building, structure or site must be at least 30 years old and have significance in the areas of architecture, archaeology, Florida history or traditional culture, or be associated with a significant event that took place at least 30 years ago.
- Resources associated with a historically significant person may qualify as a Florida Heritage Site 30 years after the death of the individual or 30 years after the event with which the person is associated.



The "Railroading in High Springs" marker in Alachua County.

- The resource should visibly retain those physical characteristics that were present during the period for which it or the associated person is significant.
- A moved building or structure may qualify as a Florida Heritage Site if the move was made 30 or more years ago, or the move was made to preserve the resource from demolition and reasonable attempts were made to ensure that the new setting is similar to the historical setting.

FLORIDA HERITAGE LANDMARK

- To qualify as a Florida Heritage Landmark a building, structure or site must be at least 50 years old

and have regional or statewide significance in the areas of architecture, archaeology, Florida history or traditional culture, or be associated with an event of statewide or national significance that took place at least 50 years ago.

● Resources associated with persons of regional or statewide historical significance may be recognized with Florida Heritage Landmark status 50 after the death of the individual or 50 years after the historical event with which the person is associated.

● In certain cases, resources that are less than 50 years old but are significant at the statewide or national level also may qualify as a Florida Heritage Landmark.



Mayo, County Seat of Lafayette County.

● The resource should visibly retain those physical characteristics that were present during the period for which it or the associated person is significant. A moved building or structure may still qualify as a Florida Heritage Landmark if the move was made 50 or more years ago, or the move was made to preserve the resource from demolition and reasonable attempts were made to ensure that the new setting is similar to the historical setting.

TYPES OF FLORIDA HISTORICAL MARKERS

MARKER FUNDING

Normally, individuals and for profit organizations must bear the full cost of paying for historical markers and plaques, but when funds are available state and local governmental agencies and nonprofit organizations may apply for matching grants to defray half the cost of markers and plaques.

PROGRAM INFORMATION

The Division of Historical Resources will provide detailed information about eligibility requirements and application and review procedures for the marker program. Requests for information and application forms may be made by writing or telephoning the Division of Historical Resources, Department of State, R.A. Gray Building, Tallahassee, Florida 32399-0250, (850) 245-6333 or 1-800-847-7278. Office hours are from 8:00 a.m. to 5:00 p.m., Monday through Friday.



[\[Museum \]](#) [\[Archaeology \]](#) [\[Historic Preservation \]](#) [\[Florida History & the Arts \]](#)
[\[Historical Resources \]](#) [\[Florida Kids \]](#) [\[Department of State \]](#) [\[E-mail \]](#) [\[Contact Us \]](#)

SHFS HOME • GET in TOUCH**About SHFS****Motorcoach
Tours****Funding
Assistance****History
Markers****Historical
Registry****Awards
Program****NWMP Trail****Annual
Conference****Folklore
Magazine****Baker Slides****Legacy Fund****Web Links**

Local History Marker Program

**To gather, preserve and
share the history & folklore
of Saskatchewan**

SHFS is concerned that the common history of a community or area often goes unrecognized and unnoticed. Through the Local History Marker Program, SHFS is looking to partner with groups and organizations for the preservation of an area's historical significance with the erection of lasting metal markers.

WHO MAY APPLY Any group, organization or individual with an historical story to tell may apply for a grant. This story can be about natural or human history. The text on the plaque should be written from a social perspective, explaining how people in the community or the province at large were affected by the story's subject. Schools, churches and cemeteries are very well represented by SHFS Markers. Consequently, applications for these types of projects will be considered only if the project is unique to Saskatchewan. For projects of great significance to the province, the Society is willing to completely sponsor the cost of a plaque.

THE STORY IN CAST METAL The Saskatchewan History & Folklore Society will provide both administrative and financial assistance to community-based projects aimed at establishing historical plaques. Although the plaques supported by SHFS often relate to stories of local rather than national or provincial significance, it is important to remember that these plaques must still recognize an item of historical interest.

CRITERIA:

- for stories about an individual, the individual must be deceased and his or her story must be at least 25 years old
- for stories about local institutions that have ceased to operate or exist, the story should tell more than simply the institution's duration

* RESEARCH FACILITIES:

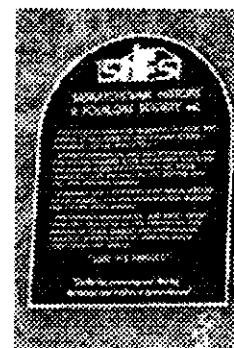
- Saskatchewan
Archives Board
787-4068 Regina

- when any individual is named in a story, his or her full name should be used instead of the individual's initials
- all submissions must be backed by documentation. Documentation should be as close to a primary source as possible (i.e. photocopies of actual registers, minutes, photographs, diaries, land titles, maps, newspaper clippings, etc.)* Photocopies from local history books are not acceptable, unless details are supported by photocopies from primary documents. Research is the applicant's responsibility.
- in approving submitted applications, SHFS reserves the right to recommend alternate wording for the marker text
- a detailed description of the cairn must accompany the application
- SHFS must receive a photograph of the installed plaque
- applicants are encouraged to have clear public access to their marker and cairn
- applicants or other designated body should carry out regular maintenance of the site
- plaque ownership is retained by the applicant

- or 933-5832
Saskatoon
- Saskatchewan Board of Education 787-6030 Regina
- Saskatchewan Land Titles Office 787-5513 Regina
- Prairie History Room 777-6019 Regina
- Local History Room 975-7578 Saskatoon
- Local museums and archives in your community might also provide assistance

WHAT DOES THE PLAQUE LOOK LIKE?

Plaque must be either of cast aluminum or bronze metal - 18" wide x 24" tall. It is a rectangular shape with a rounded top, bordered with a silver raised flat edge. Average length of text is 80 words. The inscription is in uppercase, raised silver letters against a glossy black painted background. SHFS logo and name are at the top of the plaque with SHFS mandate statement at the bottom. Four screws are provided with the plaque which attach to its back. The screws are not visible from the front.



WHEN TO APPLY: There are no application deadlines. Ensure that all information requested on the application form is complete to avoid delay in processing. Allow four months from the time the application is approved until the actual plaque is delivered directly to the project contact person.

If your committee is planning a reunion or other such gathering, please take this into consideration. "Rush orders" cannot be promised.

PAYMENT & BILLING: Saskatchewan History & Folklore Society, Inc. will pay the full cost of the plaque, which is \$1,100. Once the the foundry confirms that the plaque has been shipped SHFS will bill the applicant \$400, which represents their portion of the plaque's cost.

Each applicant should indicate within their application a reasonable level of self-generated funds, which will support their portion of the plaque cost, as well as plaque protection and long term maintenance.

APPLICATION FORM: Available from
Saskatchewan History & Folklore Society
1860 Lorne Street
Regina, SK, S4P 2L7
306-780-9204 or 1-800-919-9437

The following information is required for the History Marker Program application:

Organization Name	Project Title	Contact Person	Mailing Address	Phone Number(s)
Street Shipping Address for Plaque (cannot ship to post office or bus depot)				
CAIRN LOCATION:	Rural Municipality of:	Number:		
Land Description:	1/4	Section		
Township:	Range	W _____ M _____		
OR Community:	Street Address:			
Is there clear public access to the Cairn Site?		Who has the responsibility for regular maintenance of the site?		
List of project Executive/Committee members attached		Budget (projected costs & revenues) for project attached		
Detailed description of Cairn attached		Text for marker is complete and proof-read?		
Complete documentation supporting marker text attached				
Signature of Organization's President or Project Contact Person		Signature of Rural Municipality Administrator or Town/City Clerk		

[\[to top\]](#)

page created March '01
updated July '02
by RightBrain Creative Services
Hosted by BFSMedia