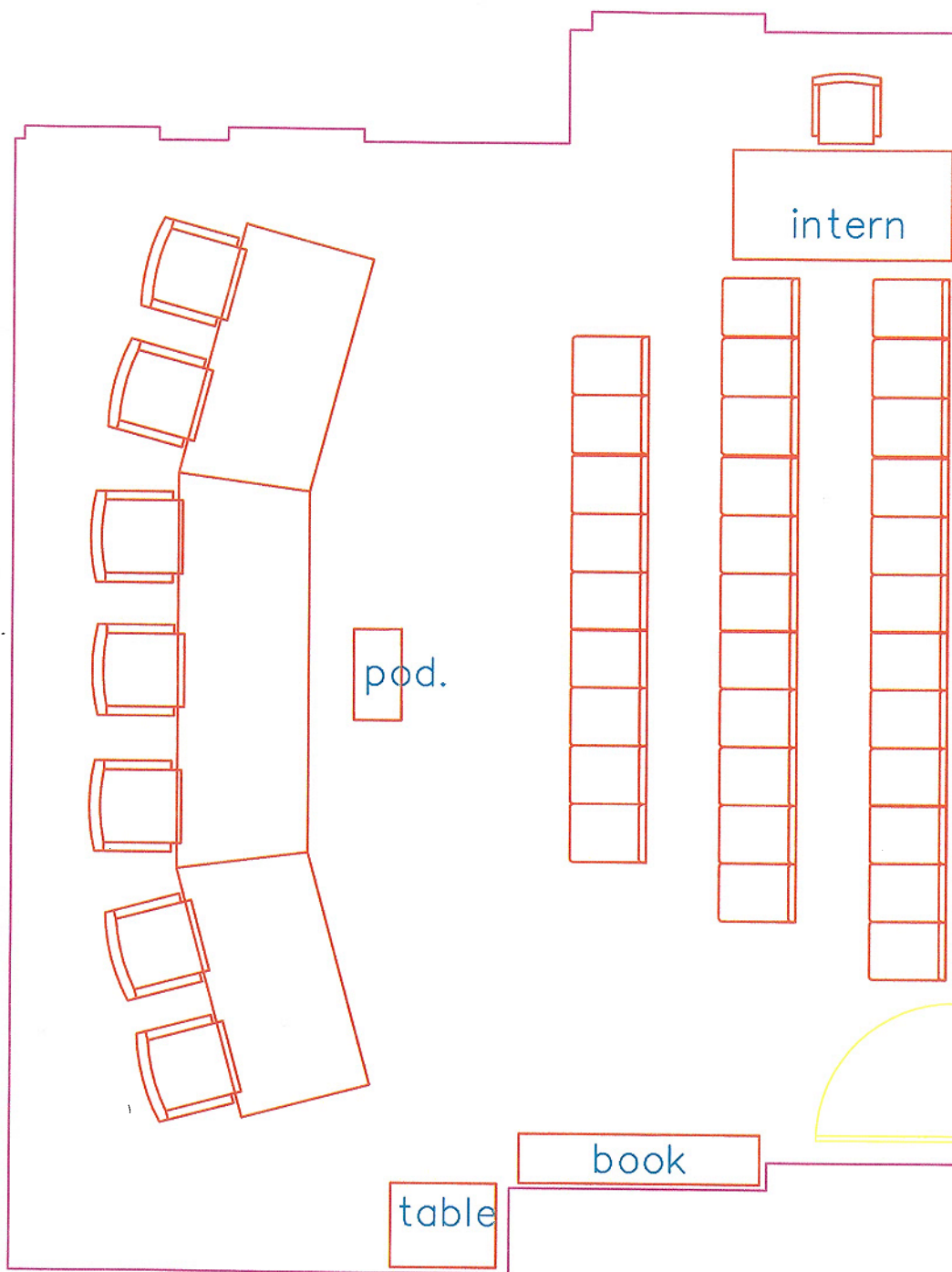


20 Audience Chairs

RED RIVER ROOM

560 S.F.

Senate Human Services — 6+Clerk
Senate Political Subdivisions — 5+Clerk

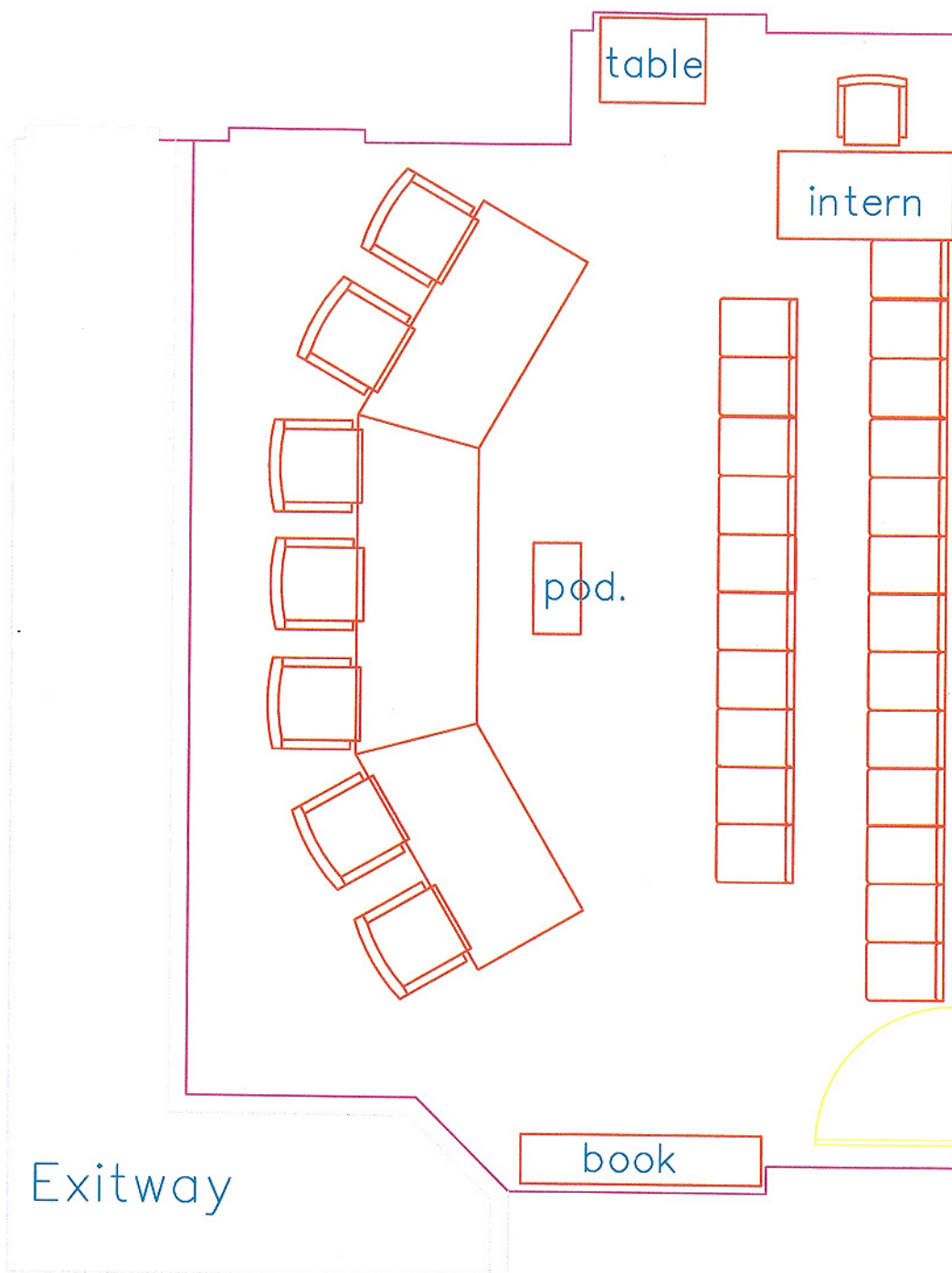


32 Audience Chairs
using same chairs as Harvest and Sakakawea

RED RIVER ROOM

560 S.F.

Senate Human Services — 6+Clerk
Senate Political Subdivisions — 5+Clerk



23 Audience Chairs

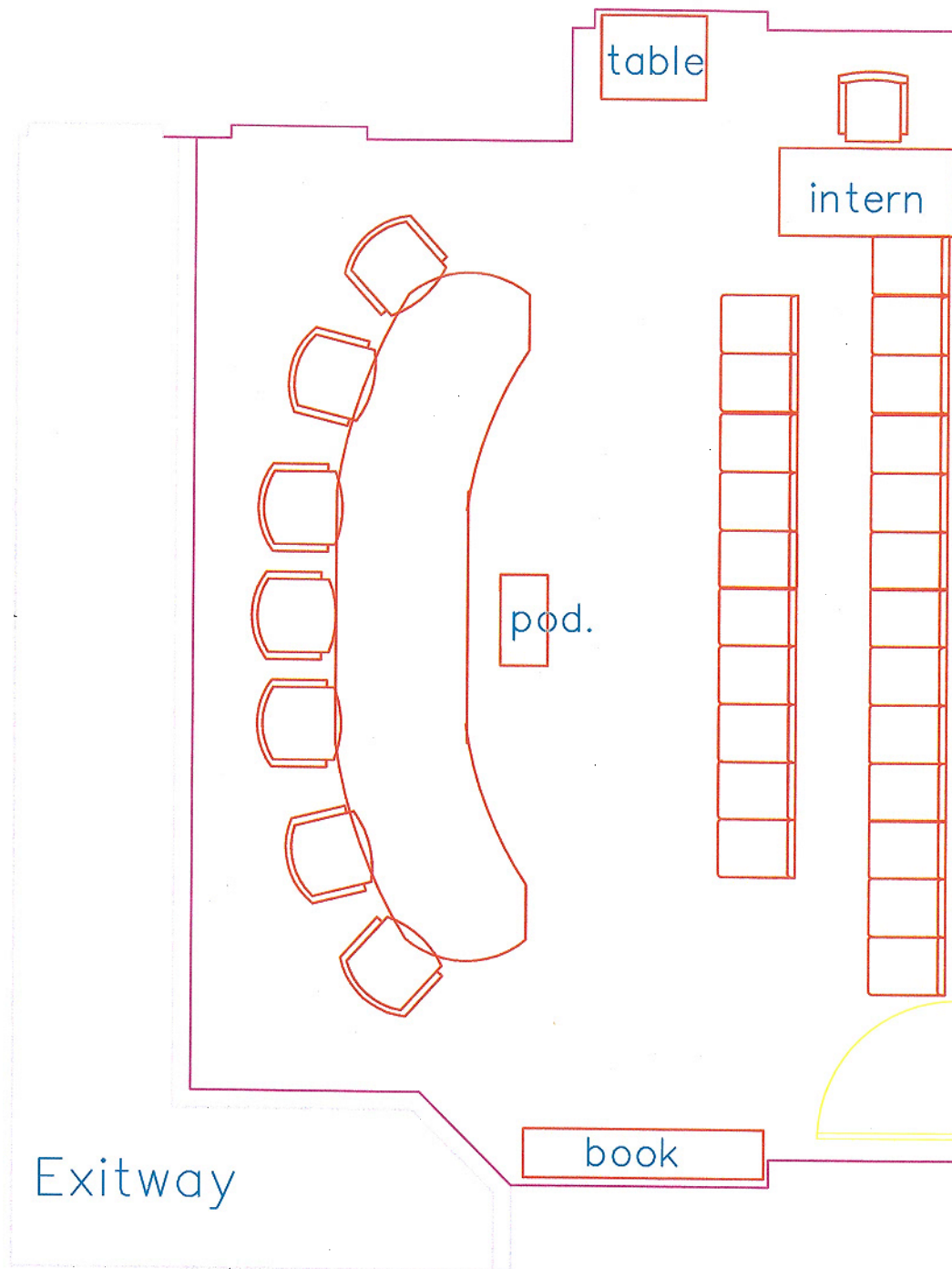
using same chairs as Harvest and Sakakawea

RED RIVER ROOM

425 S.F.

Senate Human Services – 6+Clerk

Senate Political Subdivisions – 5+Clerk



23 Audience Chairs

using same chairs as Harvest and Sakakawea

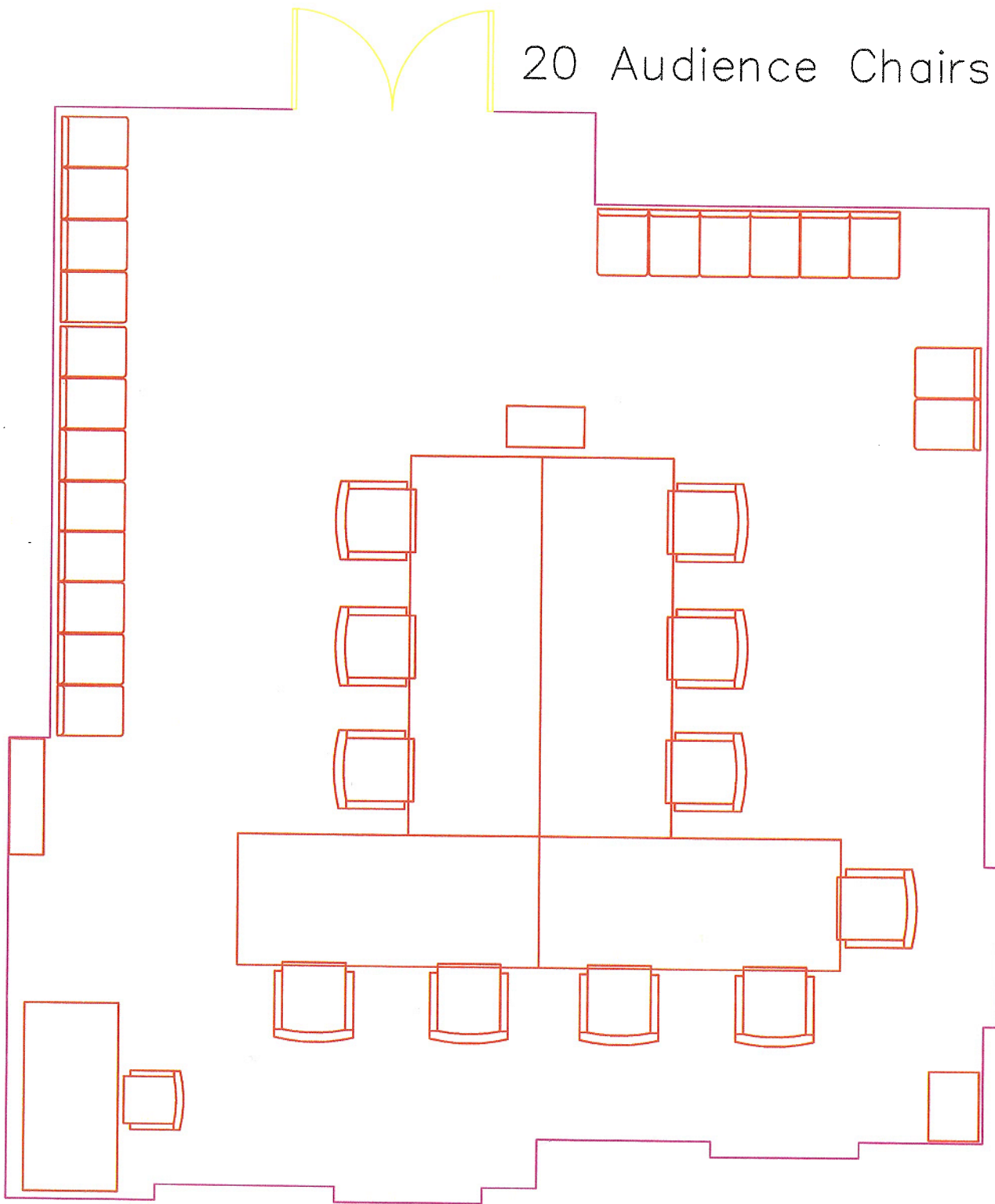
RED RIVER ROOM

425 S.F.

Senate Human Services — 6+Clerk

Senate Political Subdivisions — 5+Clerk

20 Audience Chairs



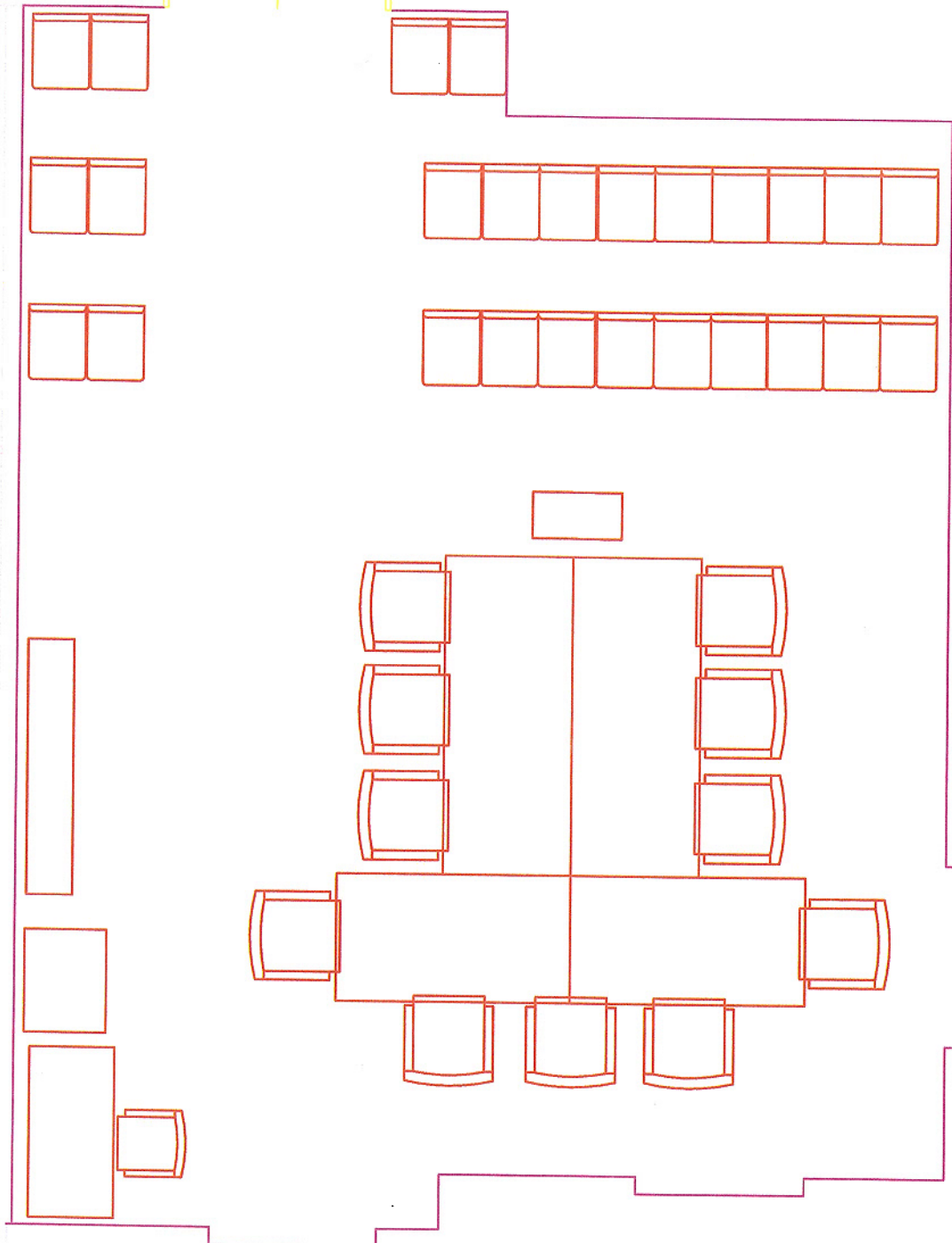
SAKAKAWEA ROOM

680 S.F.

House Appropriations Sub-Committee
Human Resources

8 + Clerk + 2 Fiscal

26 Audience Chairs

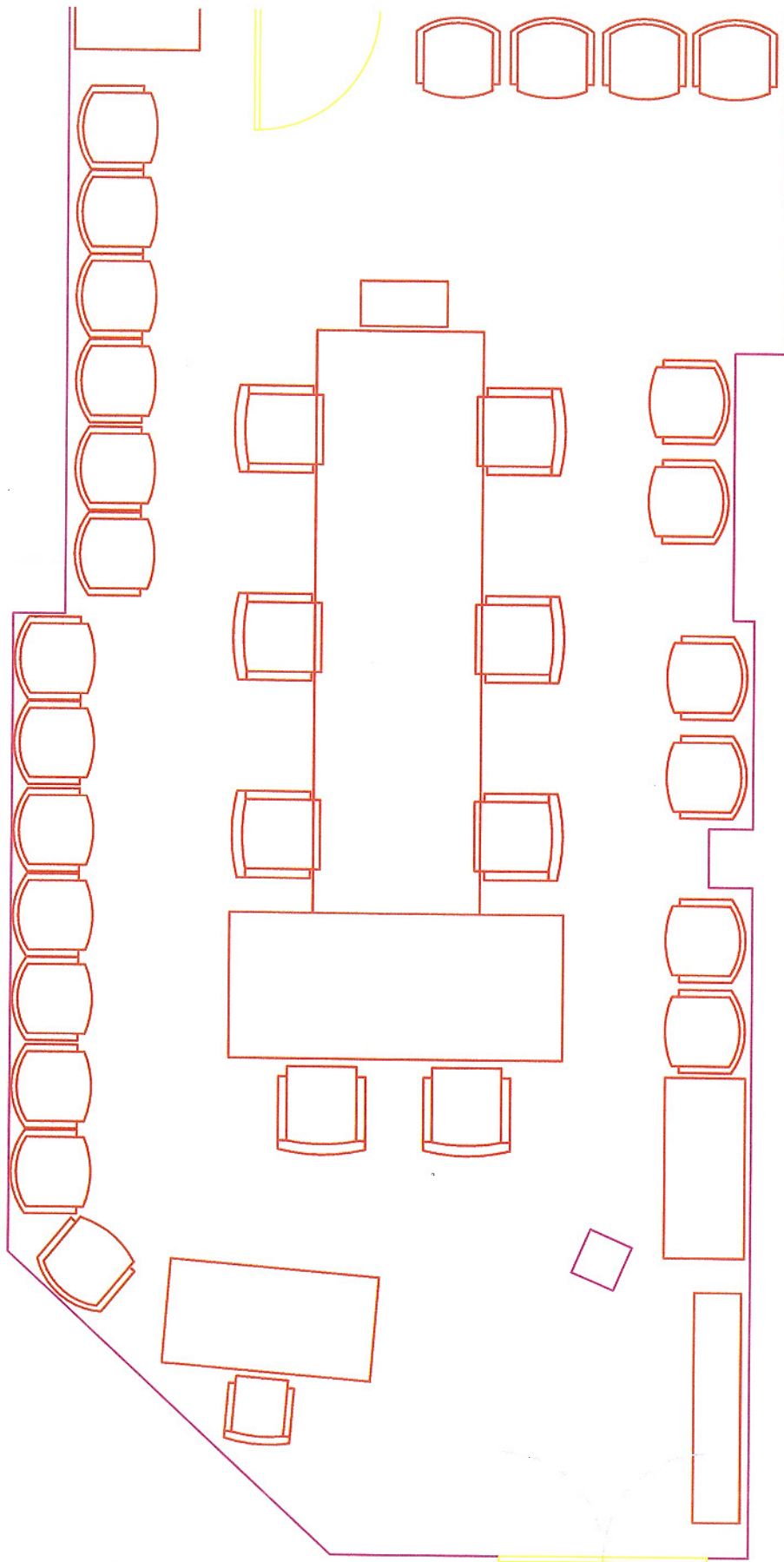


SAKAKAWEA ROOM

580 S.F.

House Appropriations Sub-Committee
Education and Environment

8 + Clerk + 2 Fiscal

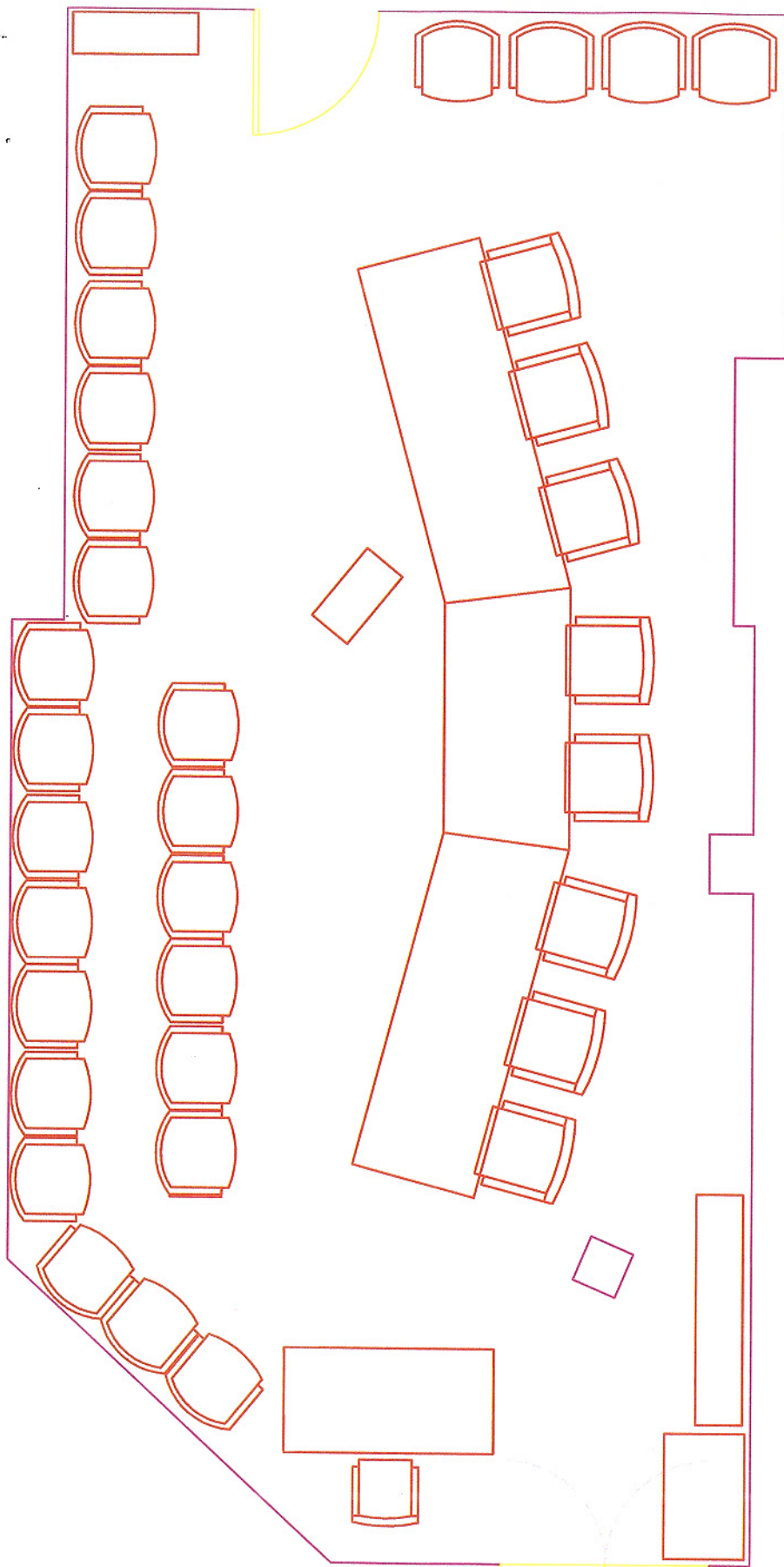


Senate Finance
and Taxation
7+Clerk

Senate
Transportation
6+Clerk

24 Audience
Chairs

LEWIS AND CLARK
615 S.F.

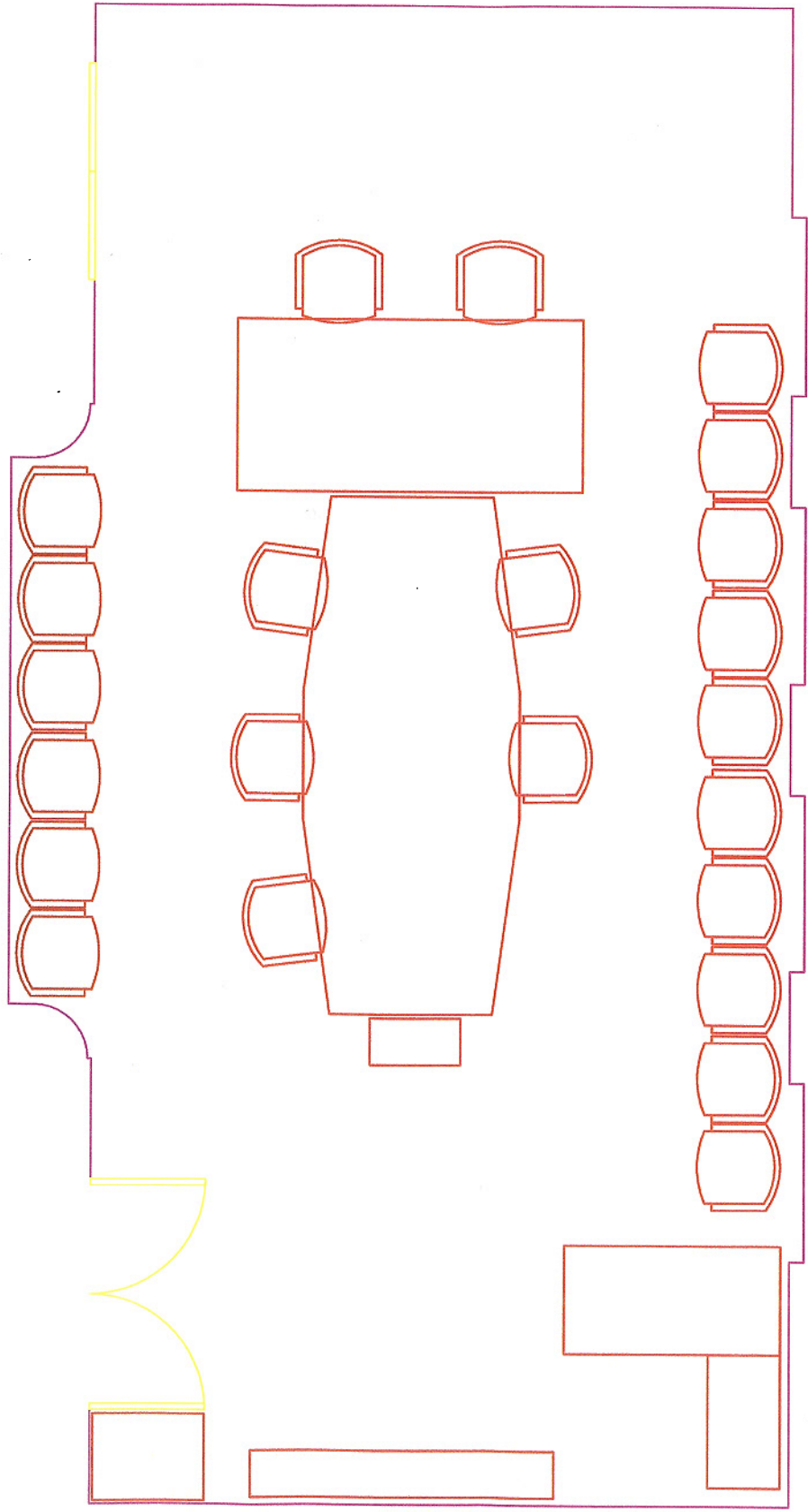


Senate Finance
and Taxation
7+Clerk

Senate
Transportation
6+Clerk

26 Audience
Chairs

LEWIS AND CLARK
615 S.F.

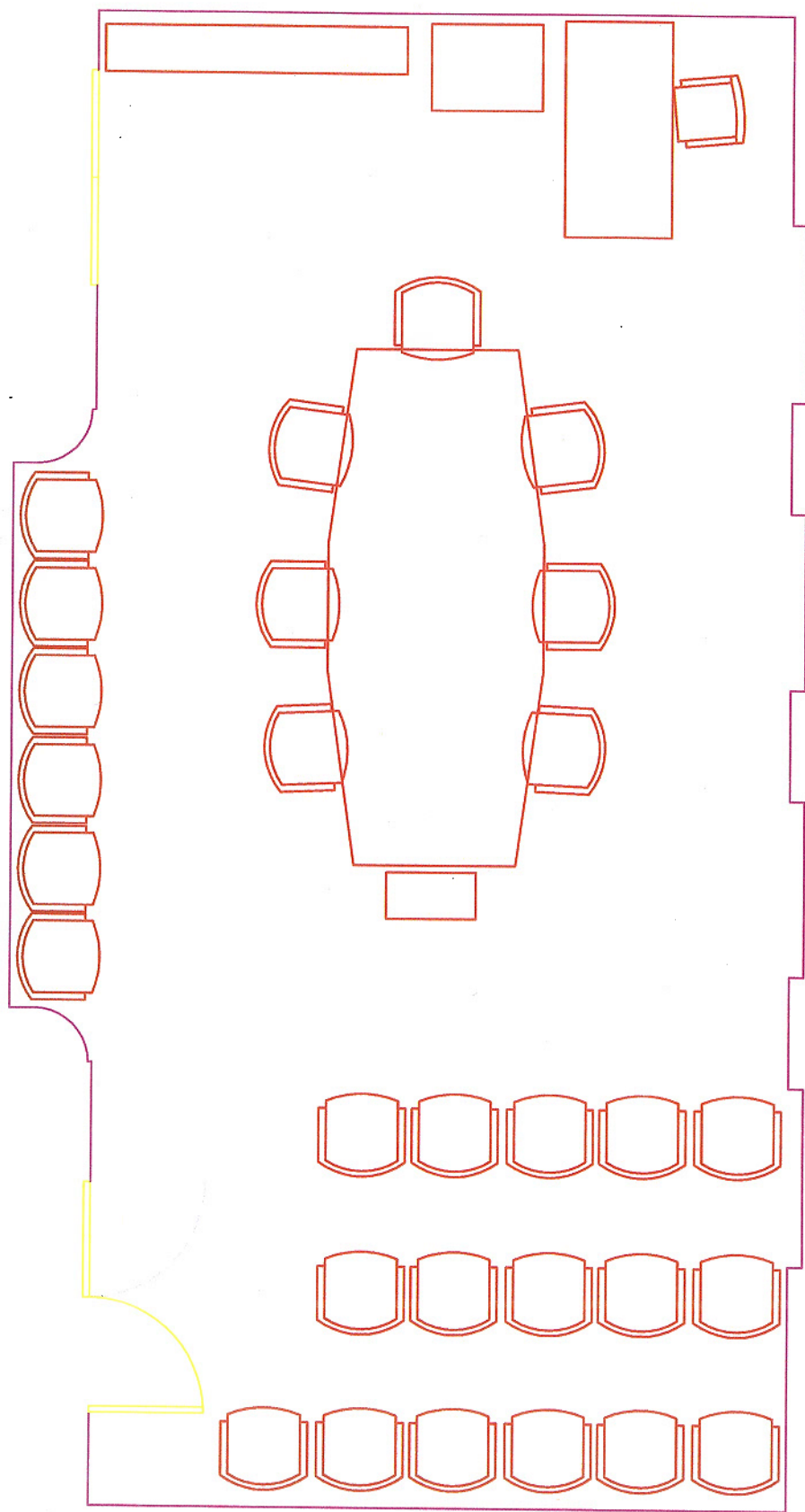


16 Audience Chairs

MISSOURI RIVER ROOM

580 S.F.

Senate Education – 5+Clerk
Senate Govt. and Vet. Affairs – 6+Clerk



22 Audience Chairs

MISSOURI RIVER ROOM

580 S.F.

Senate Education – 5+Clerk
Senate Govt. and Vet. Affairs – 6+Clerk