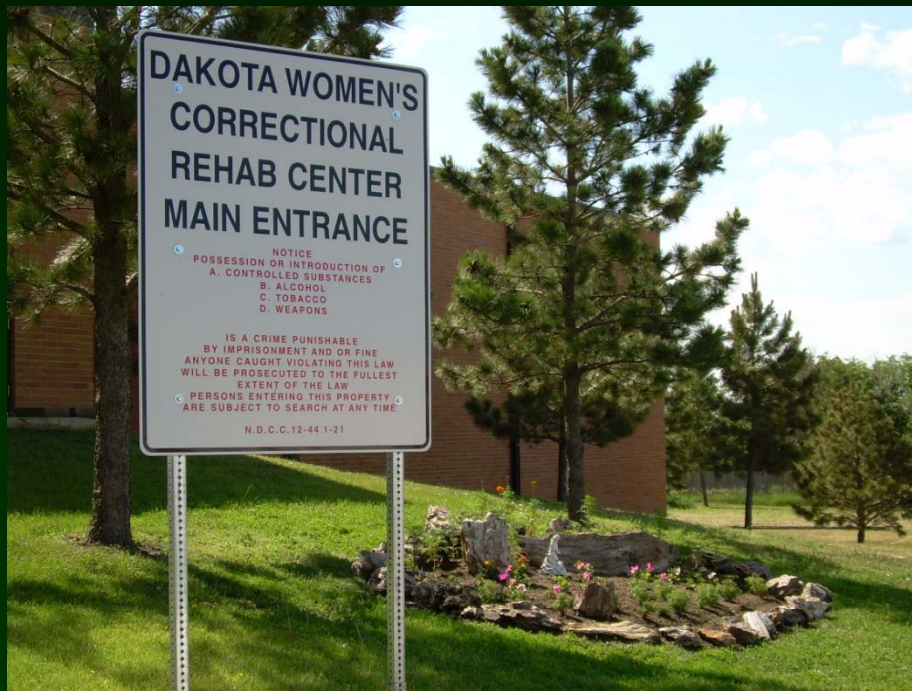


Dakota Women's Correctional Rehab Center



Colby J. Braun
Operations Administrator

DWCRC: A Division of SWMCCC

- The Southwest Multi-County Correction Center was established in 1982. It is owned and operated by six counties including Stark, Dunn, Slope, Bowman, Hettinger and Billings. The SWMCCC Board is comprised of six county commissioners representing their respective county. Mr. Duane Wolf, Stark County Commissioner, is the Board Chairman.
- The Dakota Women's Correctional Rehab Center was established in 2003. The DWCRC is one of three divisions of the SWMCCC. The Dakota Horizon Youth Center and the Dickinson Adult Detention Center are located in Dickinson. Colby Braun is the administrator of DWCRC with Ken Rooks being the administrator of DADC/DHYC.

Employment

- SWMCCC has 120 employees.
- DWCRC-69 full-time, part-time, and shared employees with an annual payroll of app. \$3,010,750 (2007).
- 7 shared employees with the Dickinson facility.

Local Investments and Physical Plant Improvements

- App. \$1,468,000 spent over the past five years on capital improvements and renovations.
- 20 ND contractors provided services to complete these projects.
- SWMCCC invested app. \$1,300,000 into this project and took on app. \$1,810,000 in loans to make the project succeed. Of this amount \$450,000 was borrowed from the owner counties on a 0% loan in order to complete the construction of the Special Management Unit.
- App. 600 vendors currently serve SWMCCC.

Capacity Statistics for DWCRC

- DWCRC's current capacity is 126 beds as follows:
- Minimum security – 70 beds
- Higher Custody – 40 beds
- Orientation – 16 beds
- Special Management Unit- 5 cells

Demographics for 2007 Admissions

Race

Caucasian:	91
Native American:	54
Hispanic:	4
Alaskan Native:	1

Crime Category

(Based on Controlling Sentence)

Drug:	42.7%
Violent:	14.7%
Sex Offense:	0.7%
Other:	42.0%

Average Sentence Imposed

(Based on Controlling Sentence)

Drug:	27 Months
Sex Offense:	12 Months
Violent:	32.9 Months
Other:	20.4 Months

Average Length of Stay

(Based on Controlling Sentence-2007 Releases)

11.2 Months

Average Age At Admission

32.2 Years

...of the drug

(Number of Inmates)

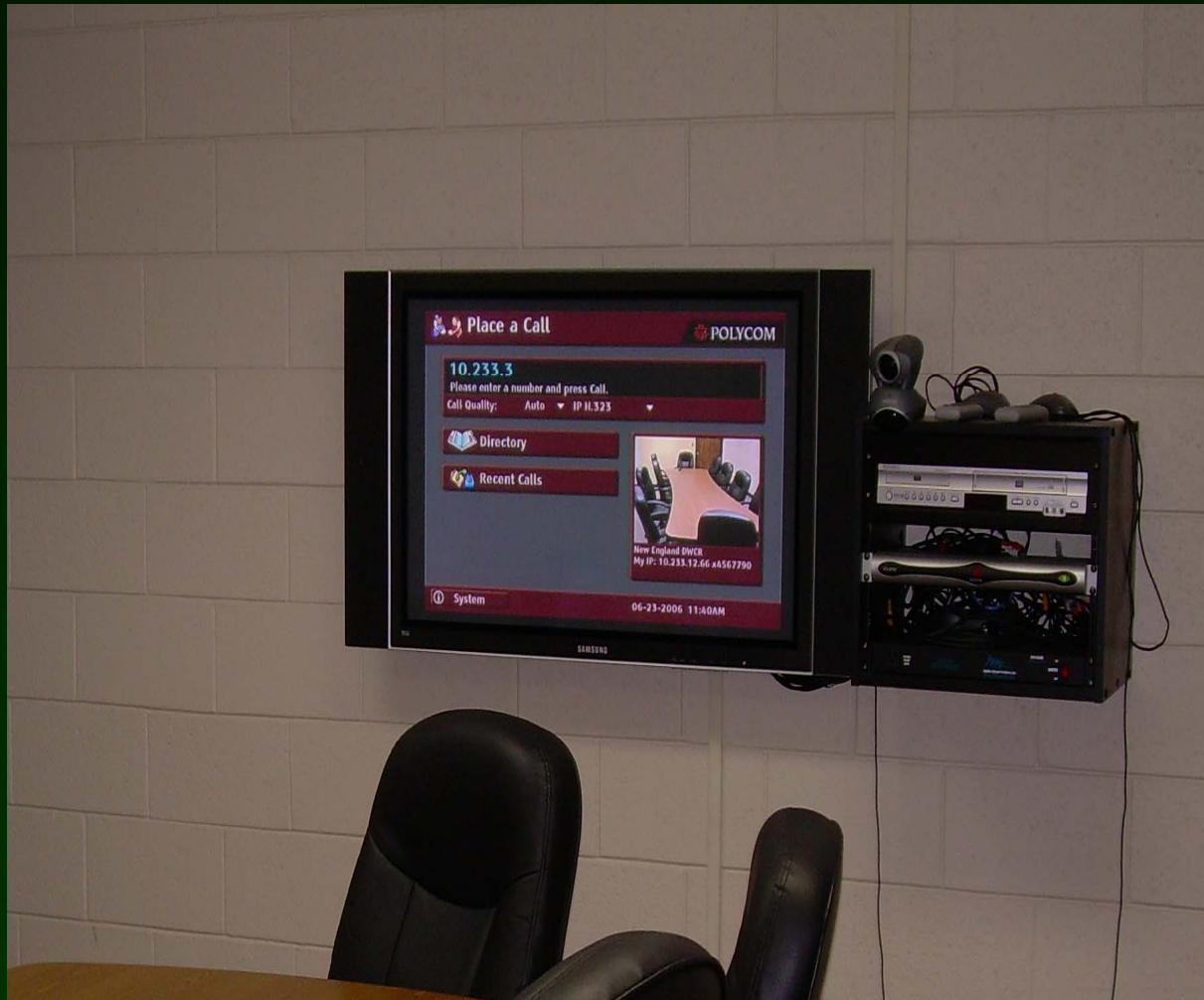
Alcohol:	1
Possession:	38
Delivery:	25

Average Daily Count

(July 1, 2007-June 30, 2008) 103.55

Number of New Arrivals

(July 1, 2007-June 30, 2008) 162



Technology

DWCRC has Interactive Television (ITV) capabilities thanks to a grant from the Rural Economic Area Partnership. The system has given us the following opportunities:

- Training through NDSP
- DOCR Field Services classes with new arrivals.
- DOCR Classification
- Parole Board Hearings
- Inmate-Children Meetings
- Court Hearings
- DOCR TPCI Meetings
- Administrative Team Meetings with Dickinson facility
- Inmate College Courses

Administrative Team



Facility and Services



Plant Management

Dave Dullum-Plant Services Director



Entrance/Sally Port



Control Center





Security Department

Sean Bowen- Chief of Security

4 Captains

1 Training Captain

- 4 Control Room Officers**

- 4 Special Management Unit Officers**

- 18 Correctional Officers**

Administration Building Hallway



Infirmary



Medical Department

DeeAnn Marsh-Director

- Provides on-site nursing coverage 24 hours per day.
- On-site Doctor call 3 days per week
- On-Site Psychiatric services weekly
- On-site laboratory services
- Off-site vision and dental care
- Coordinates with UND Family Medical Clinic, Bismarck, ND for OB and family practice visits
- Pharmacy services through NDSP
- Monthly chronic care clinics to qualifying inmates
- Annual well woman exams and mammograms
- Coordination with State Lab for reporting/treating infectious disease
- Full intake/health appraisals on new arrivals
- Full vaccination services including Hepatitis A/B and Tetanus boosters

Education/Recreation Department

Heather Luchi-Director



Offering:

- GED/ABE classes
- Computer classes
- Social Skills
- Healthy Lifestyles
- Pre-Release Program
- Parenting classes
- College correspondence
- Library services
- Cell Hobby/Music Classes
- Exercise equipment/gymnasiums
- Yard/garden
- On-site college courses

Vocational Programs

Inmate Jobs

Vocational Training:

Welding

Horticulture

Carpentry

Inmate Jobs:

Janitorial/Sanitation

Yard Crew

Inmate Supply Distribution

Kitchen

Recreation Assistant

Laundry

Law Librarian

Librarian

Educational Tutors

Work Release

Manpower

Community Service

Work release gives offenders a chance to earn some money for release from the institution, allows them to readjust to society, and hopefully provides a job that they can keep after release.

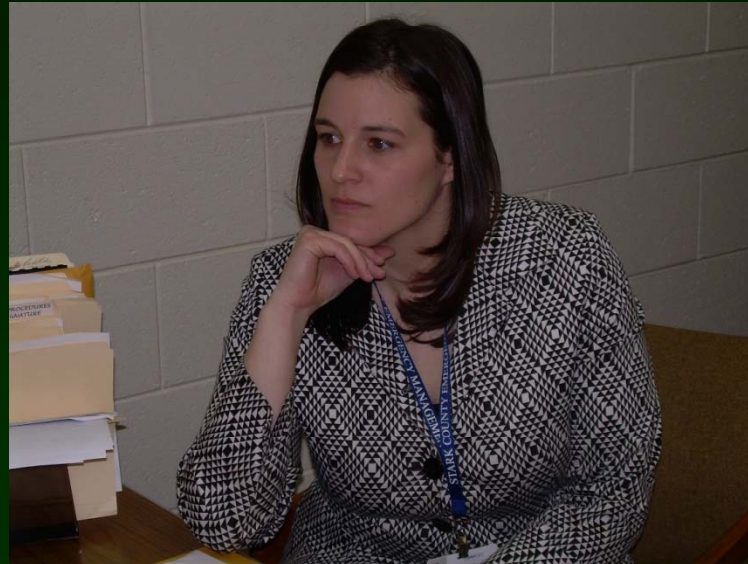
Manpower is a work program designed to place offenders at community, nonprofit work sites. Manpower utilizes a shared payment of services with the employer for transportation, meal and labor costs.

Community Service allows offenders to volunteer to give back to the community.

Case Management Department

Heather Luchi, Director

- 1 Case Manager
- 1 Part-time Case Manager
- 3 Case Workers
- Monthly contacts
- Parole plans
- Case Plans
- Family contacts



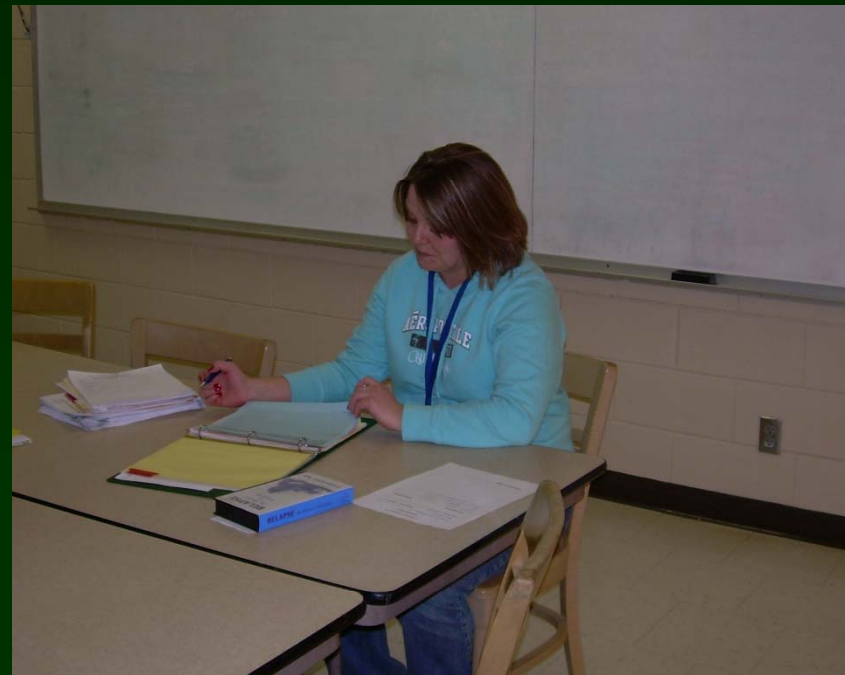
Treatment Department

Rachelle Brewer, LAC

Treatment Director

- 1 Therapeutic Technician
- Chaplain

- Primary Addiction
- Family Therapy Sessions
- Cognitive Restructuring
- Healthy Relationships
- Women's Mental Health
- Survivors of Violence (Not active)
- Anger Management Group
- Houses of Healing Trauma and Loss Group
- Treatment Plan Review
- Lecture
- Self-help Meetings
- Sex Offender Counseling
- Beyond Trauma (Self-mutilation/abuse)
- High Risk Disciplinary Detention Monitoring
- Family Integration Programs



Chaplaincy (Treatment Department)

- **James Murphy-Chaplain**
- **Baptism/Confirmation Classes**
- **Grief Counseling**
- **Meditation**
- **Houses of Healing Facilitator**
- **Bible Study**
- **Catholic Worship**
- **Protestant Worship**
- **Muslim Practices**
- **Wicca Practices**
- **Native American Ceremonies**
Sweat Lodge/Smudging/Talking Circle

Kitchen/Dining Room



Cheryl Hewson-

Food Services Director



Visitation Room



Visitation: Monday/Wednesday/Friday/Saturday/Sunday

Prairie Industries

Melanie Fitterer-Director



Assembly Work-

- Locks
- Electrical boxes/panels
- Reflector poles
- Warning signs
- Depth chains

- Key Cutting
- Grinding Metal Plates
- Operating Hydraulic Press and Hydraulic Cutting Machine



- 1 Floor Supervisor
- 3 Off-site Supervisors
- Member of National Correctional Industries Association
- PIE Certified
- 14 Inmate Workers

Sewing Industry-

- T-shirts
- 2 piece uniforms
- Coveralls
- Robes
- Medical gowns
- Chiropractic gowns
- Dignity napkins
- Rain suits
- Officer uniform pants
- Assorted Bags
- Hunting Attire

Prairie Industries Custom Designs

Products currently in production:

Church purificators /amices

Hospital gowns

Hospital scrubs

Garment protectors

T-shirts

Prison uniforms

Coveralls

Robes

Winter jackets

Officer pants

Sheets

Pillowcases

Mattress pads

Blankets

Tablecloths

Chef Jackets/Aprons

Shirts

Key cutting

Lock assembly



Horizon Hall

Medium/Maximum Security



Horizon Hall Corridor



Horizon Hall Security Office



Orientation Unit



Jo Rooks-

Deputy Operations Administrator

Orientation Director

Purpose-To ease the transition into institutional life with the least amount of anxiety

2 single bed cubicles/7 double-bunked cubicles

Upon arrival-

- Unclothed body search
- Inmate number assigned
- Photograph/Fingerprinted
- Medical Screening
- Issue clothing/Assign housing
- Data collection

Orientation Programming-

- Assessments:
Educational/Addiction/Cognitive, anger, trauma, abuse, sex offenses, LSI/ASI etc.
- Classes/Lecture

Must complete:

- Anger Management for Women

Map Through the Maze (Orientation to Prison Program)

- Classification

Horizon Hall Dayrooms



General Housing Dayroom

Honor Dorm Dayroom



- Gymnasium
- Weight/Exercise Room
- Yard



Horizon Hall Dormitory



Special Management Unit



- 5 Individual Cells
- Dayroom
- Yard
- Houses-
- Administrative Segregation
- Protective Custody
- Disciplinary Detention
- Pre-Hearing Detention
- Observation
- Special Assistance

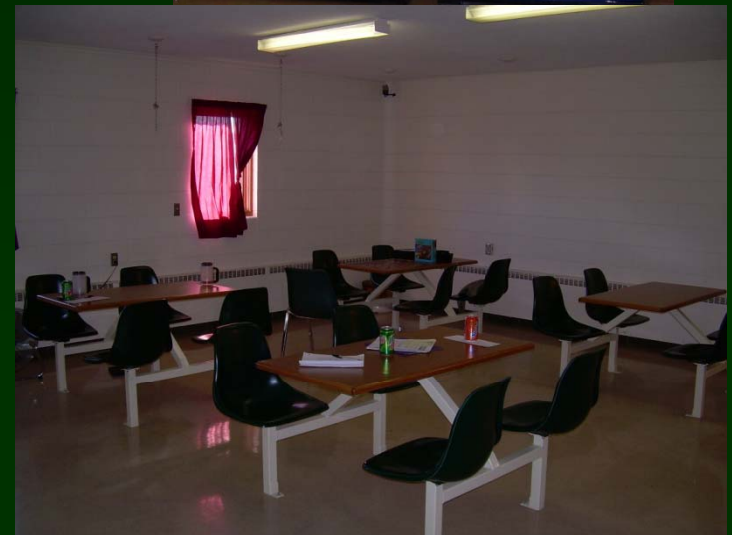
Additional Special Management cells available at the Dickinson facility.

Haven Hall Minimum Security

Haven Hall Dayroom



- Gymnasium
- Weight/Exercise Area
- Yard/Garden



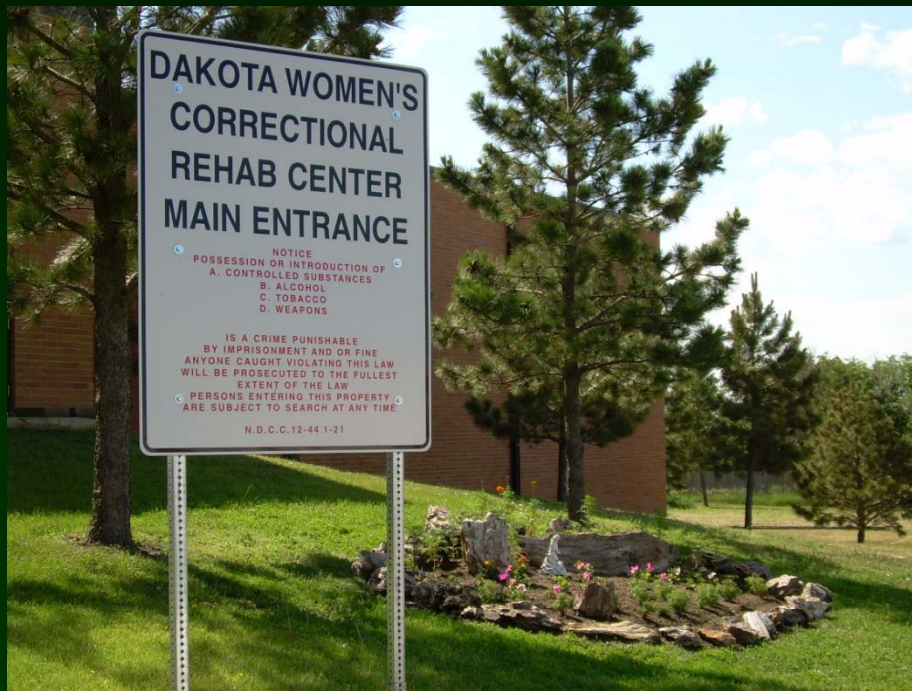
Haven Hall Dormitory



Chapel



Dakota Women's Correctional Rehab Center



Colby J. Braun
Operations Administrator