



NDSP Project Update

Presentation to the Correctional Facility Review Committee

Criminal Justice Institute
January 8, 2008



DMJM H&N



Parametrix, Inc.

Criminal Justice Institute Team Presenters



- George Camp, Criminal Justice Institute
- Jeff Buck, DMJM Design



Meeting Agenda



- Project Schedule - Update
- Site Evaluation Progress - Update
- Proposed Model Facility Program
- Initial Site Development Concept
 - Drivers
 - Configuration Options
 - Housing Units
 - Initial Site Plan
- Questions and Answers



DMJM H&N



Parametrix, Inc.

Current Effort



- North Dakota's Objectives: Determine the most desirable and cost-efficient option for meeting the needs of 1,000 inmates at the Penitentiary/MRCC in 2017.
- Current Task: Develop the Model Program to determine required areas and an Initial Site Development Plan to perform “test fits” on the various sites.

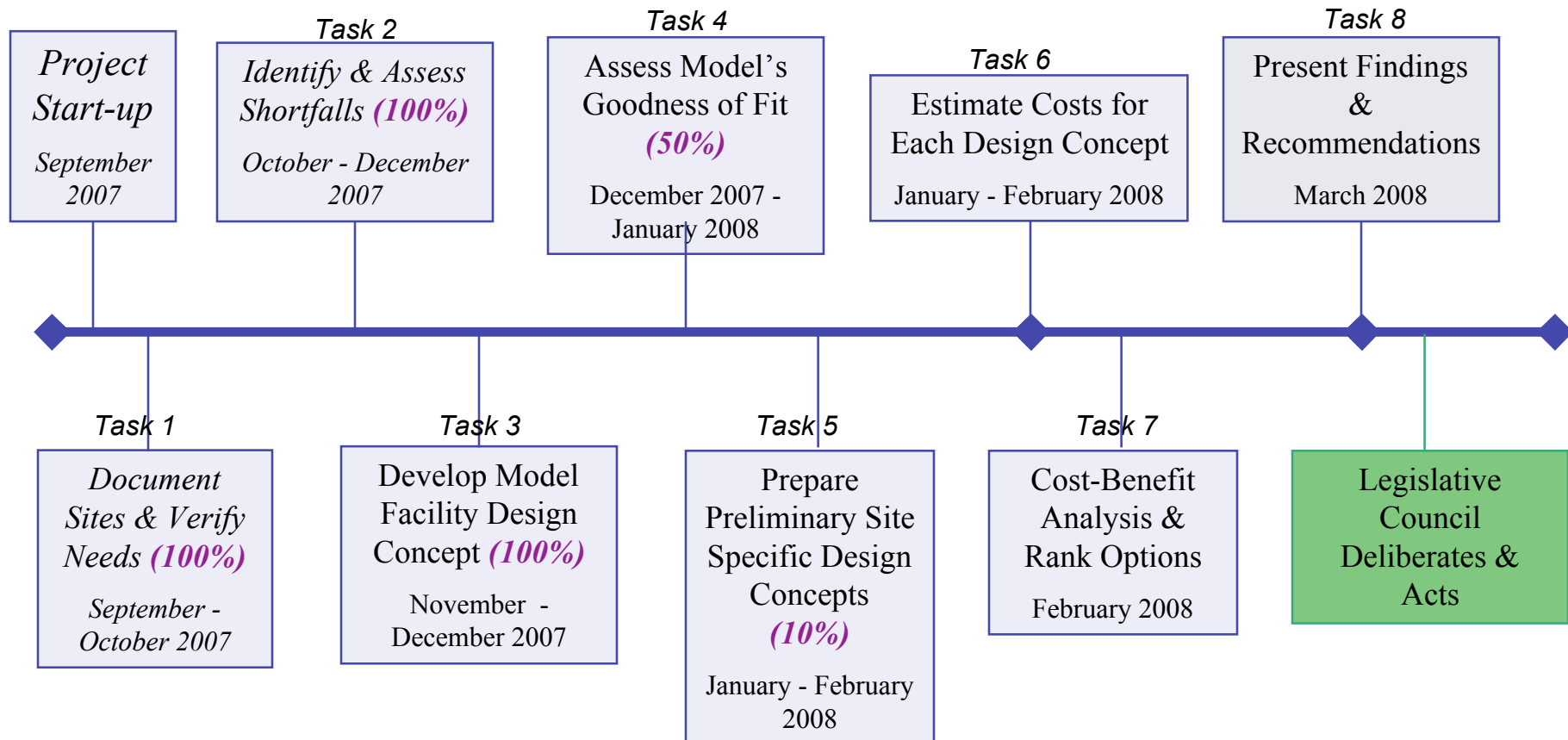


DMJM H&N

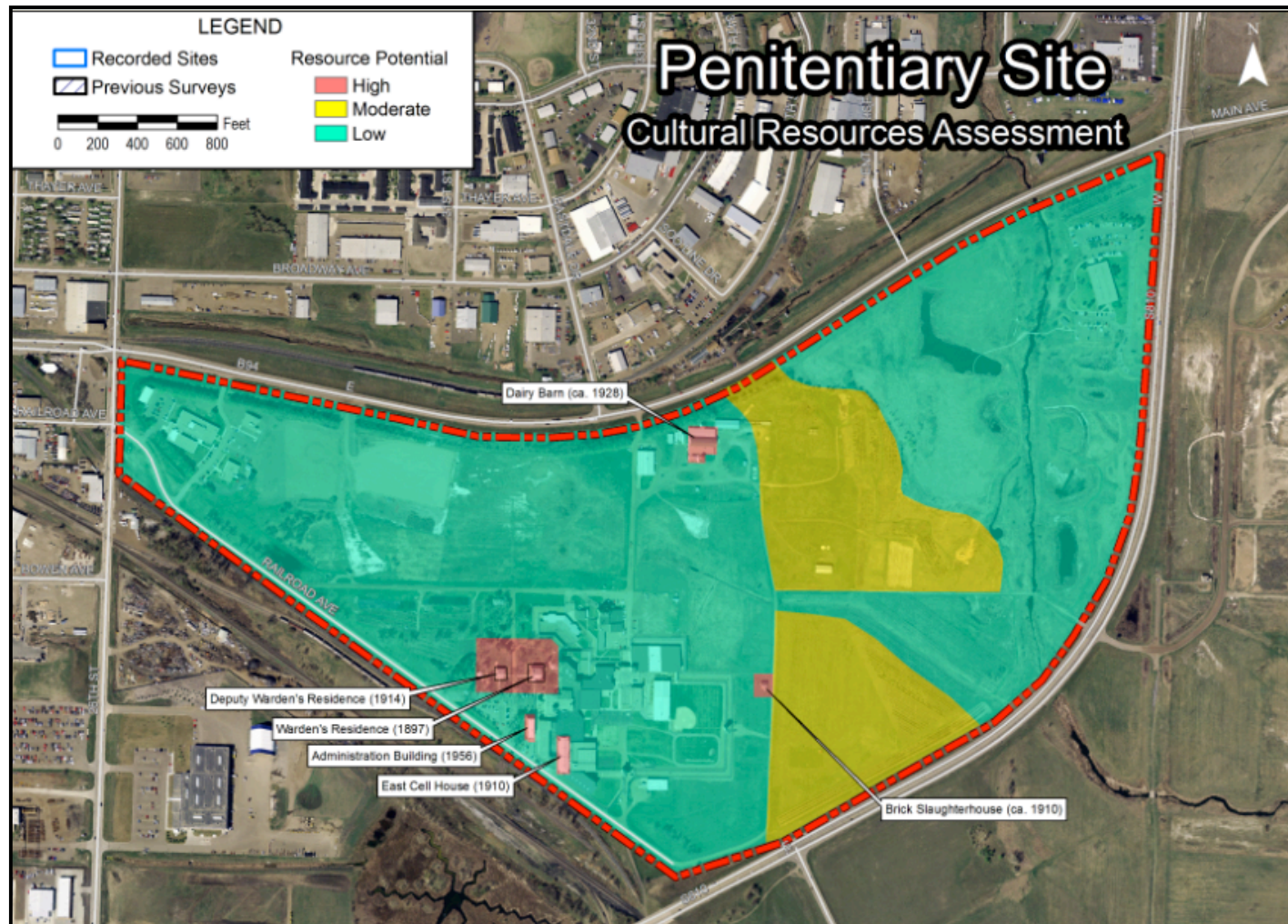


Parametrix, Inc.

Project Task Timeline



Site Evaluation Update



High Potential represent areas that may require substantial additional effort, expense and time to ensure compliance with the NHPA.

Moderate Potential represent areas that may require some additional effort, expense and time to ensure compliance with the NHPA.

Low Potential represent areas that may require little or no additional effort, expense and time to ensure compliance with the NHPA.

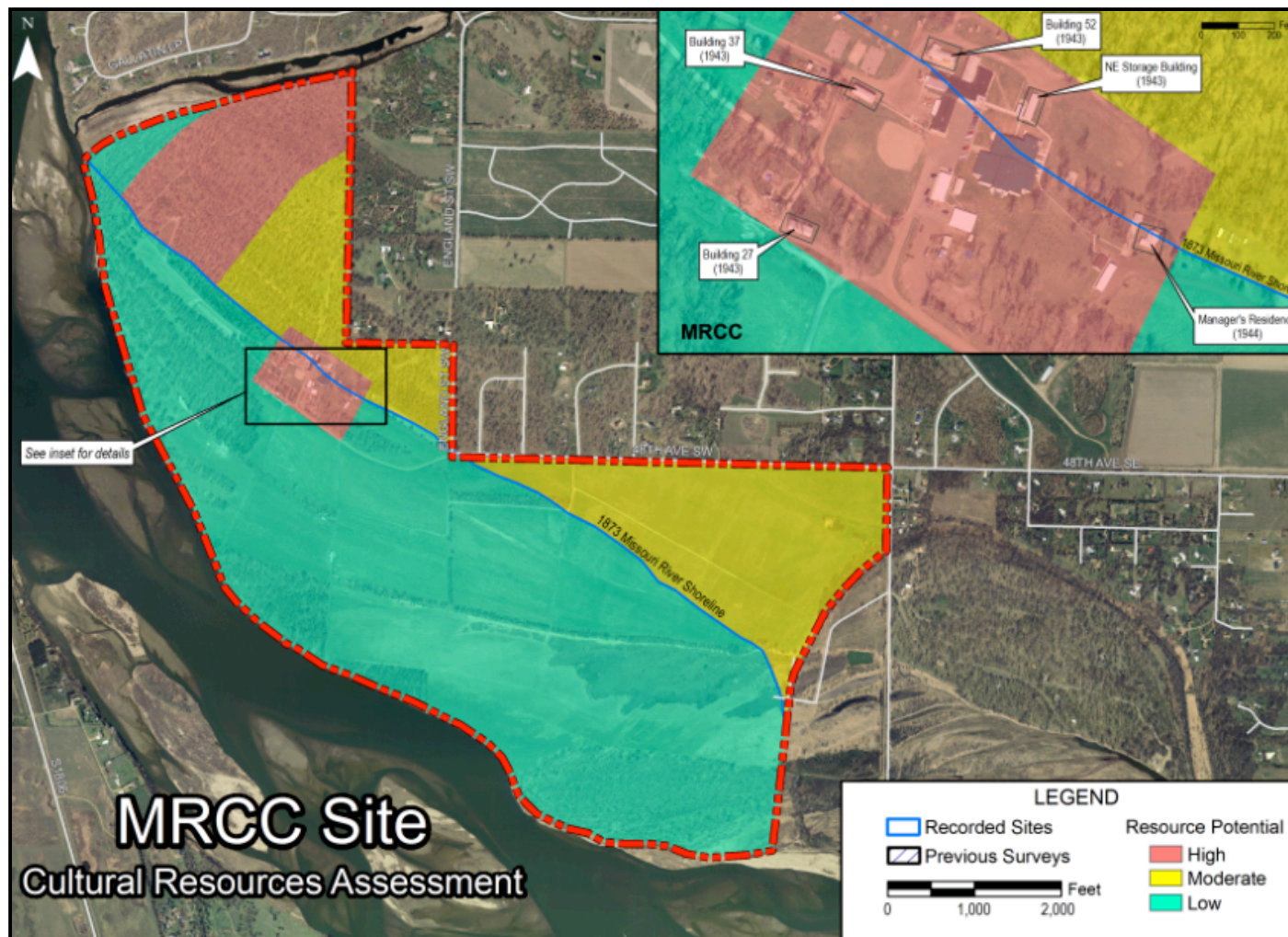
Site Evaluation Update



High Potential represent areas that may require substantial additional effort, expense and time to ensure compliance with the NHPA.

Moderate Potential represent areas that may require some additional effort, expense and time to ensure compliance with the NHPA.

Low Potential represent areas that may require little or no additional effort, expense and time to ensure compliance with the NHPA.

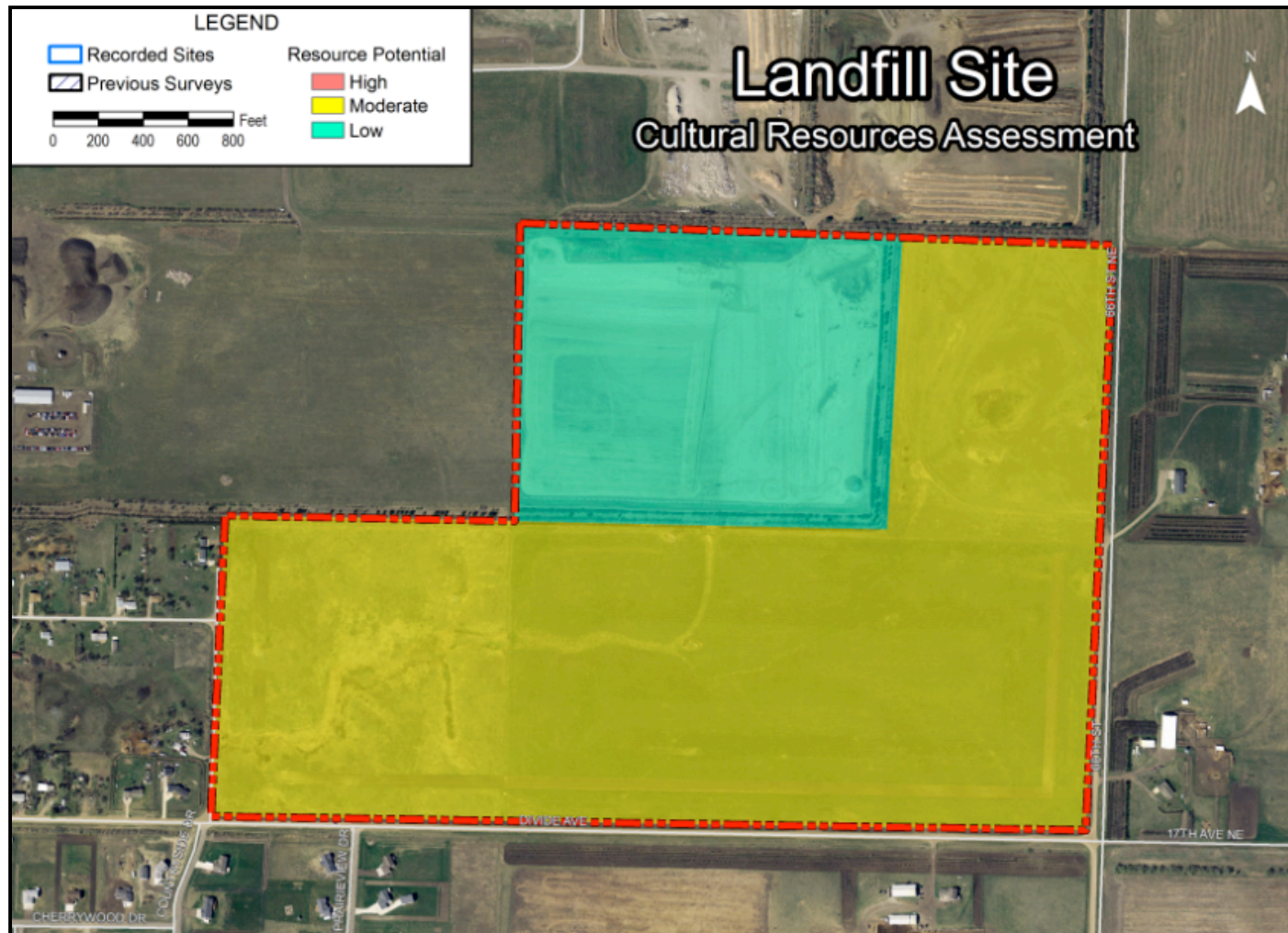


DMJM H&N



Parametrix, Inc.

Site Evaluation Update



High Potential represent areas that may require substantial additional effort, expense and time to ensure compliance with the NHPA.

Moderate Potential represent areas that may require some additional effort, expense and time to ensure compliance with the NHPA.

Low Potential represent areas that may require little or no additional effort, expense and time to ensure compliance with the NHPA.

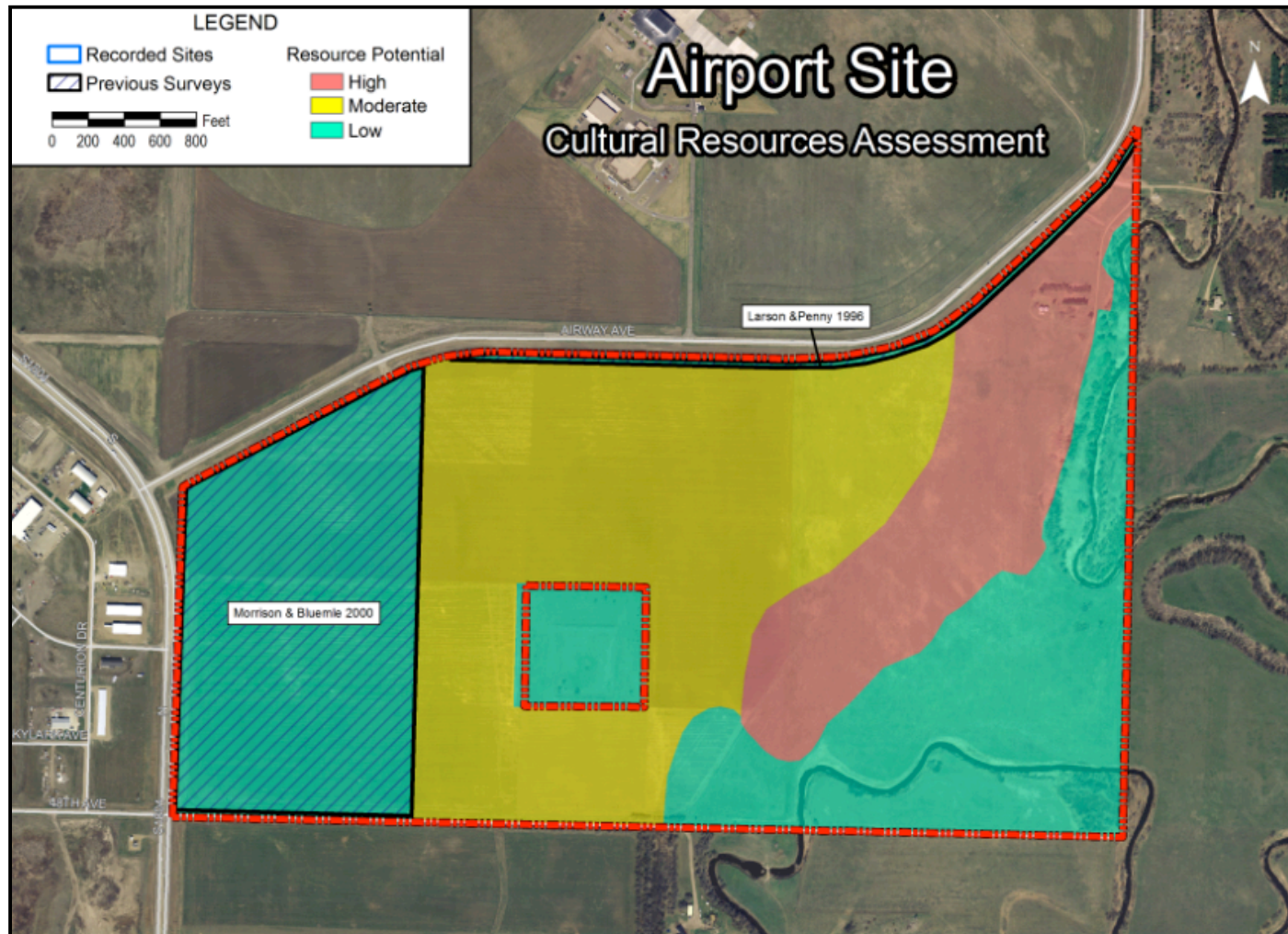


DMJM H&N



Parametrix, Inc.

Site Evaluation Update

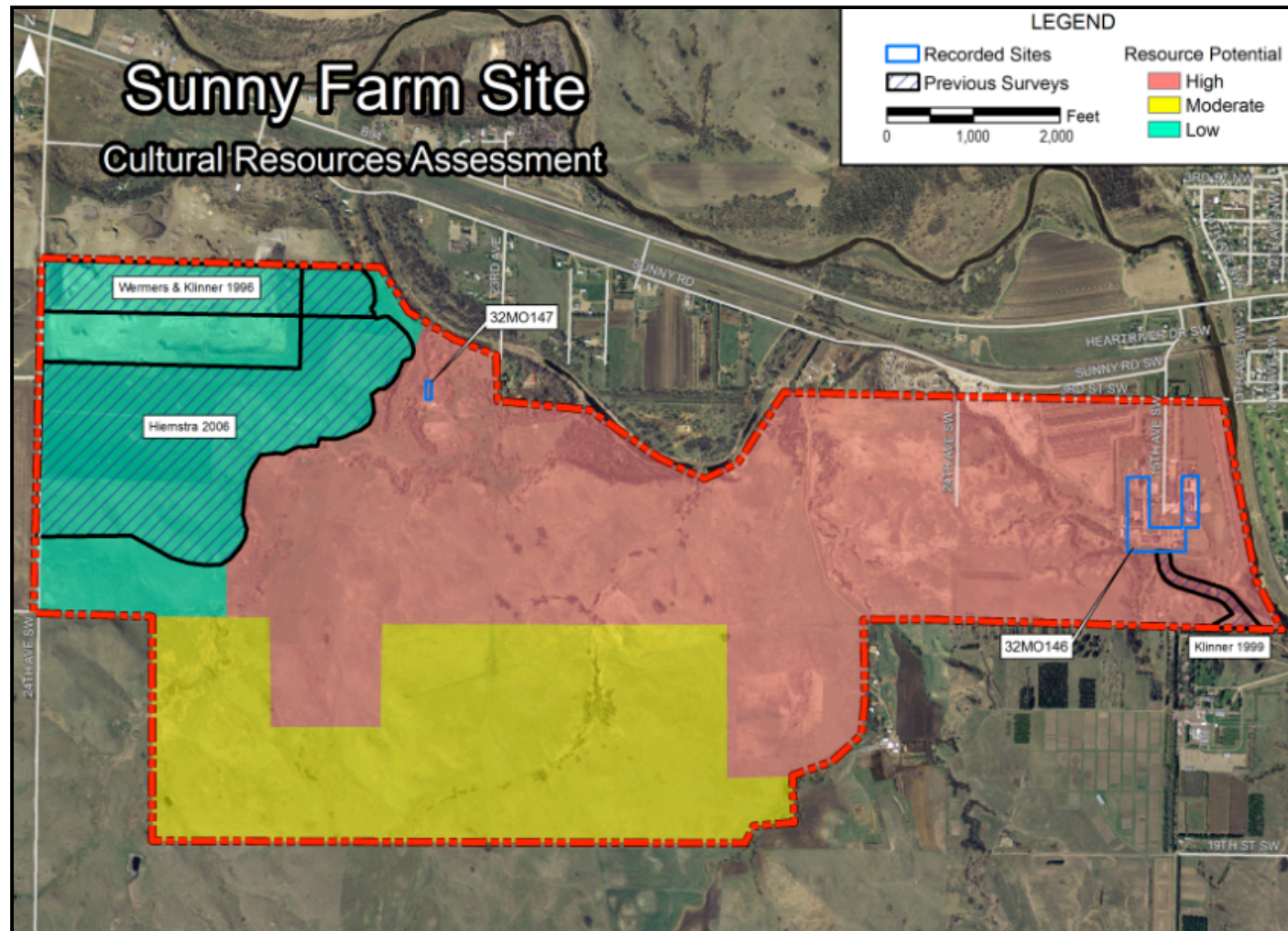


High Potential represent areas that may require substantial additional effort, expense and time to ensure compliance with the NHPA.

Moderate Potential represent areas that may require some additional effort, expense and time to ensure compliance with the NHPA.

Low Potential represent areas that may require little or no additional effort, expense and time to ensure compliance with the NHPA.

Site Evaluation Update



High Potential represent areas that may require substantial additional effort, expense and time to ensure compliance with the NHPA.

Moderate Potential represent areas that may require some additional effort, expense and time to ensure compliance with the NHPA.

Low Potential represent areas that may require little or no additional effort, expense and time to ensure compliance with the NHPA.



DMJM H&N



Parametrix, Inc.

Decision Sequence



- **Model Program** **January 8, 2008**
 - Delineation of the Physical Space and Adjacencies for a 1,000 inmate Replacement Facility
- **Test Fits** **January 29, 2008**
 - Placing the Model Program on the Various Sites Being Considered and Evaluating the Results
- **Reuse Plan** **January 29, 2008**
 - Developing a Plan to Accomplish the “Model Program” Through Reuse/ Expansion of the Existing NDSP
- **Options Investigation** **February 19, 2008**
 - Evaluation of the Various Options to Determine Operational and Construction Costs of Each
- **Cost-Benefit Analysis/ Recommendations** **March 3, 2008**
 - Evaluation of the Various Options to Determine Operational and Construction Costs of Each



DMJM H&N



Parametrix, Inc.

Model Program



- **“New Replacement Facility”**
 - Every Component Examined for New Facility on a New Site
- **Operationally-Based Program**
 - Space Requirements generated on the basis of how the proposed replacement facility should function.
- **Standards Compliance**
 - American Correctional Association Standards used.
- **Staffing Effectiveness**
 - Focus on safe and secure operation with no more staff than necessary.
- **Full Program Capability**
 - Education, Vocational, and Industries Areas to accommodate 90% Program Capability.

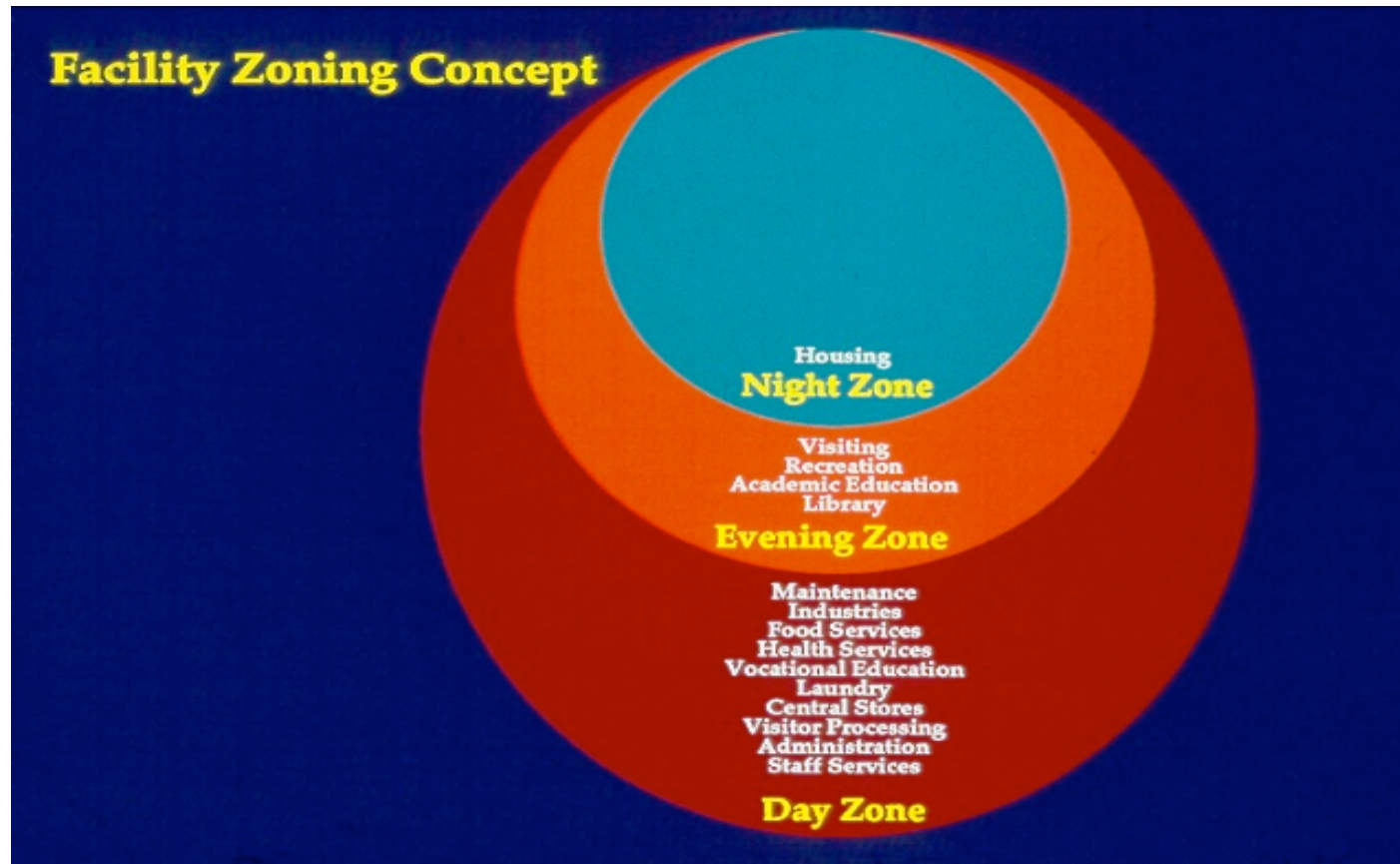


DMJM H&N



Parametrix, Inc.

Model Program: Zoning



Model Program: Service Delivery



Service Delivery Matrix	Cell	Housing Unit	Cluster	Facility	Other
Housing					
Sleeping		1			
Toilet/Lavatory		1			
Shower					
Dayroom					
Custody					
Operations					
General Administration					2
Custody Administration			3		
Reception					
Classification					
Health Services					
Food Service					
Inmate Dining				4	
Storage					
Maintenance					
Inmate Services					
Visiting					
Recreation				5	
Academic Education					
Vocational Education					
Library					
Legal Library					
Religious Services				6	
Barber					
Industries					
Jail/Prison Industries					
Outside Work Programs					



DMJM H&N



Parametrix, Inc.

Model Program

ID	Component Name	No. of Beds	NSF	Net:Gross Ratio	CGSF
1	Site Development		NA	NA	NA
2	Entry Area		2,400	1.30	3,120
3	Central Administration		8,376	1.35	11,308
4	Facility Administration		4,392	1.35	5,929
5	Staff Services/ Training		4,720	1.30	6,136
6	Central Control		1,740	1.35	2,349
7	Intake/Transfer/Release		4,408	1.35	5,951
8	Classification		1,438	1.35	1,941
9	Visitation		3,500	1.25	4,375
10	Commissary		1,310	1.25	1,638
11	Library		1,930	1.25	2,413
12	Education/ Programs		18,130	1.20	21,756
13	Treatment		5,740	1.35	7,749
14	Recreation		9,190	1.20	11,028
15	Health Services		9,650	1.47	14,196
A	Administration		2,330	1.35	3,146
B	Outpatient Clinic		3,310	1.40	4,634
C	Inpatient Infirmary	21	4,010	1.60	6,416
16	Food Service		16,780	1.25	20,975
17	Laundry		3,170	1.25	3,963
18	Outside Warehouse		20,590	1.20	24,708
19	Rough Rider Industries		95,760	1.21	116,304
A	Administration/Sales		6,070	1.35	8,195
B	Processing/ Support		3,210	1.35	4,334
C	Industries Shops		65,400	1.20	78,480
D	Outside Industry Area		21,080	1.20	25,296
20	Central Plant/ Maintenance		18,950	1.15	21,793
21	Reception Housing	96	10,220	1.65	16,863
22	Disciplinary Segregation	24	4,270	1.75	7,473
23	Segregation Housing	96	13,980	1.70	23,766
24	General Population Housing	512	53,200	1.65	87,780
25	Therapeutic Community	144	20,238	1.65	33,393
26	Housing Zone Support		13,030	1.30	16,939
27	Minimum Security Housing	192	18,354	1.60	29,366
28	Minimum Security Support		20,992	1.50	31,488
		1,085	386,458		534,697



534,697 x 1.15=
614,902 BGSF



Parametrix, Inc.

Facility Configuration “Drivers”



- **Capacity Distribution**
 - Total Capacity Required and Extent of Different Classifications; Size of Management Units.
- **Available Site Area**
 - Actual Site Area available for development determines compactness required.
- **Environmental Factors**
 - Weather, Site Microclimate, Natural Light.
- **Facility History**
 - Character of Population, Staff, and Historical Operations.

Capacity Distribution

	New Facility for 1000 Inmates			
Population	Total	Flex	Net Op.	Use
Served	Beds	Beds	Capacity	
Disciplinary Detention	24	12	12	Max (2 12's)
Administrative Segregation	96	10	86	Max (2 48's)
Admission & Orientation	96	2	94	MxMd Comb (2 48's)
Maximum Security GP	512	24	488	MxMd Comb (8 64's)
Gang Renunciation Unit			0	in above
Transition (Step Down) Unit	48	4	44	MxMd Doubles (48)
Criminal Thinking TC	48	4	44	MxMd Doubles (48)
Substance Abuse TC	48	4	44	MxMd Doubles (48)
Medium Security GP			0	
Minimum Security GP	192	4	188	Min (3 64's)
Medical Infirmary	10	10	0	Max
Medical Chronic Care				
Medical Segregation	4	4	0	Max
Mental Health	7	7	0	Max
TOTAL	1,085	85	1,000	
PERCENT	100%	7.9%	92.4%	
security distribution	Total	Flex	Net Op.	Use
	Beds	Beds	Capacity	
	141	43	98	Maximum
	752	38	714	Max/ Med Combo
	192	4	188	Minimum
	1,085	85	1,000	Total



DMJM H&N



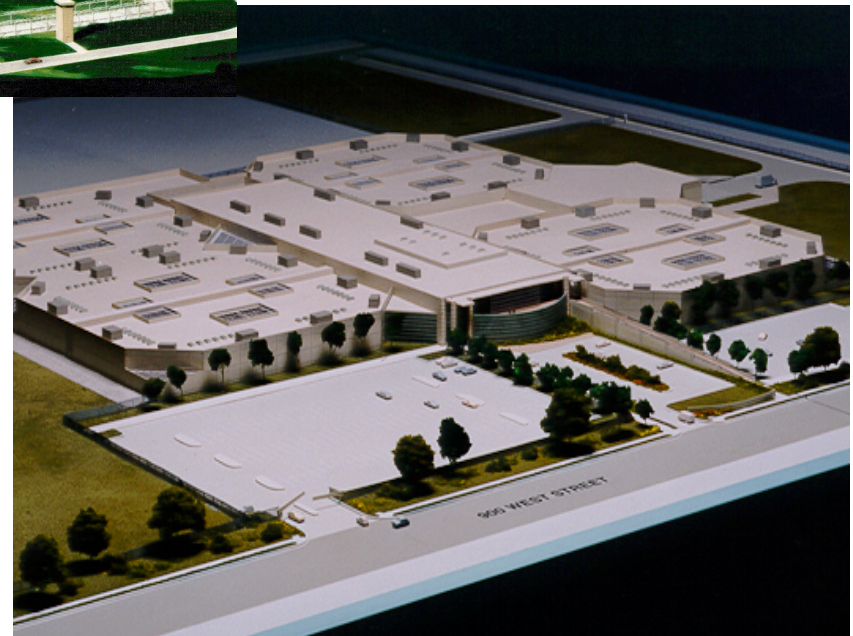
Parametrix, Inc.

Capacity Distribution

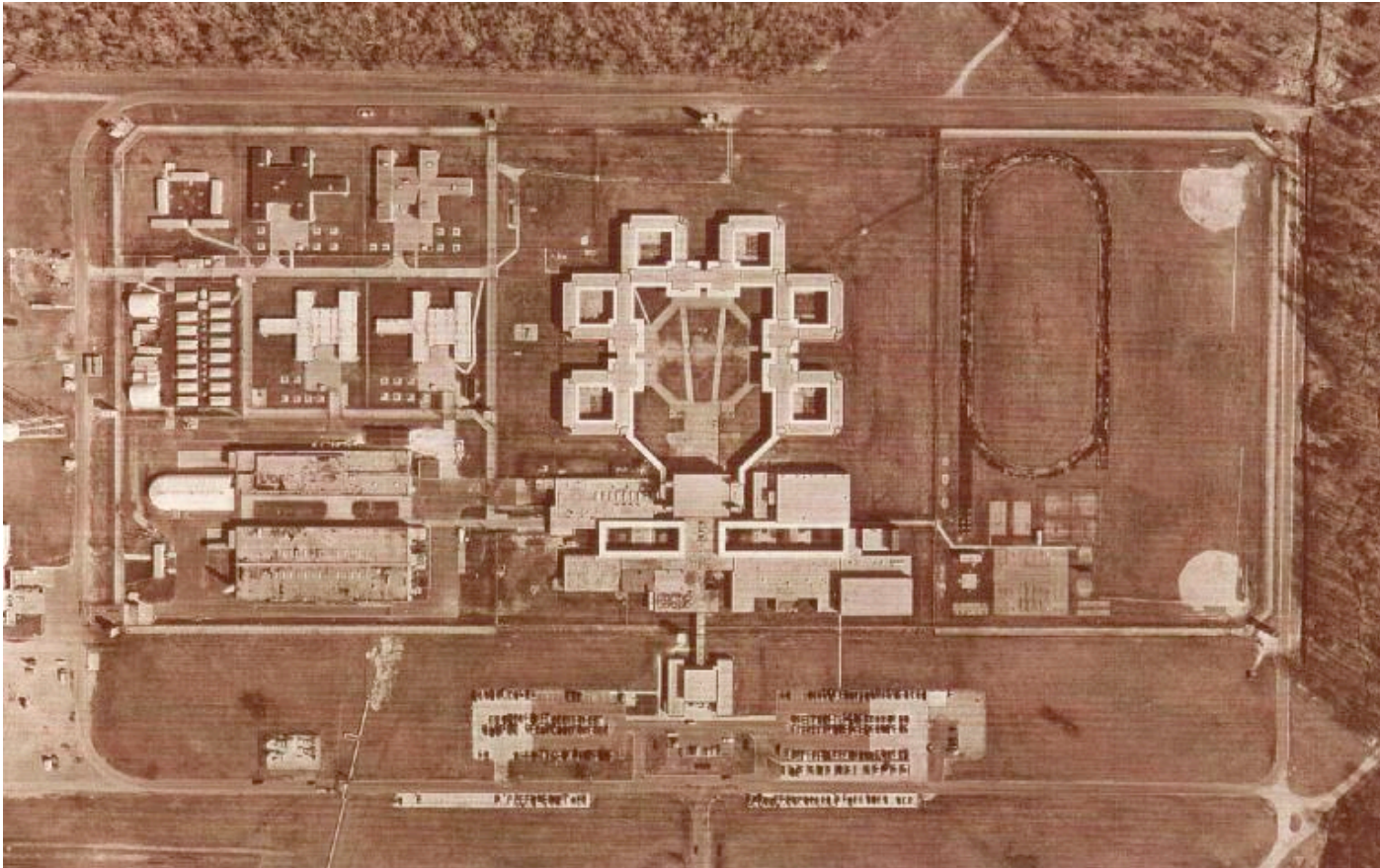
- **Segregation**
 - 2 12's Punitive Segregation Unit
 - 2 48's High Security Units
- **Reception**
 - 2 48's Single Cell Units
- **General Population**
 - 8 64's Combination Single/Double Cell Units
- **Therapeutic Communities**
 - 3 48's Double Cell Units
- **Minimum Security**
 - 1 64 Bed Mini-Dorm Unit (Inside)
 - 128 Beds in Dry Rooms (Outside)



Site Configuration Drivers: Available Area



Site Configuration Drivers: Inspiration

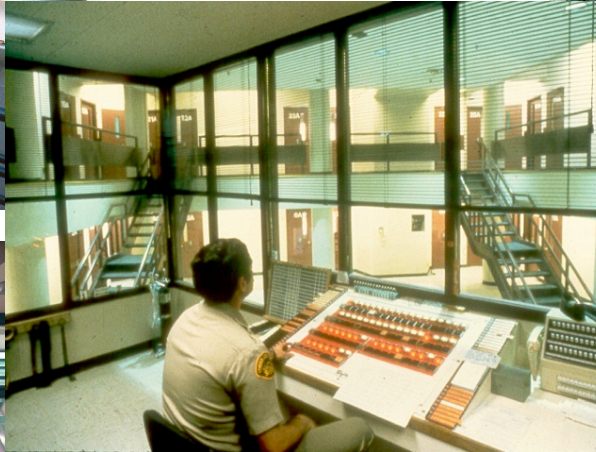


Parametrix, Inc.

Site Configuration Drivers: Environmental Factors



Site Configuration Drivers: Staff Work Environment

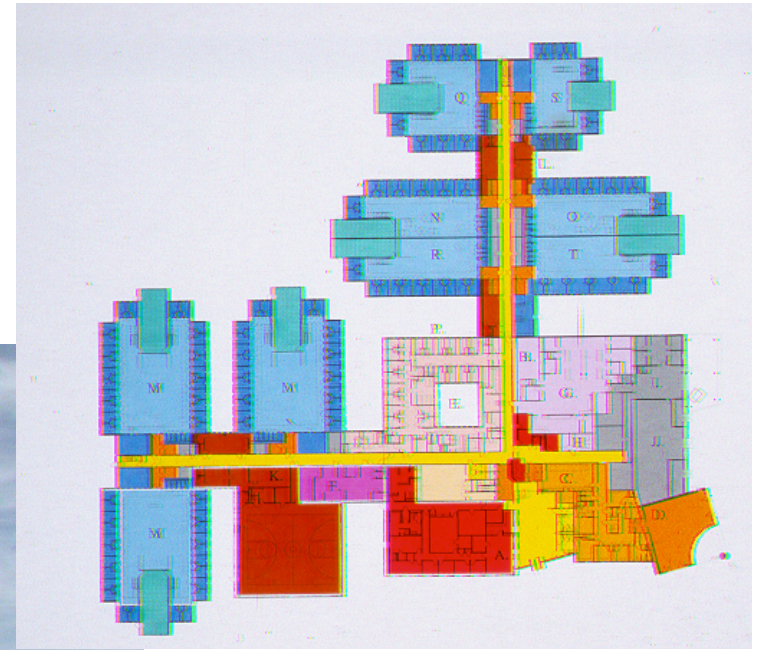


DMJM H&N



Parametrix, Inc.

Jail vs. Prison Layout: Jail = Minimum Movement



Jail vs. Prison Layout: Prison = Zone Movement



DMJM H&N

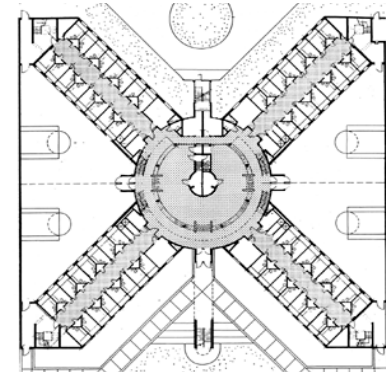


Parametrix, Inc.

Housing Unit Options:

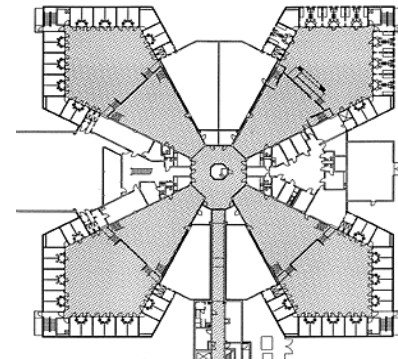
Linear

- Minimizes Area
- More Inmates, Less Visibility
- Recreation Area Impact



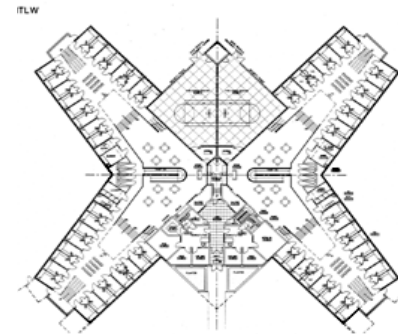
Podular

- Greater Visibility
- Decentralizes Recreation/Support
- Better Quality of Space



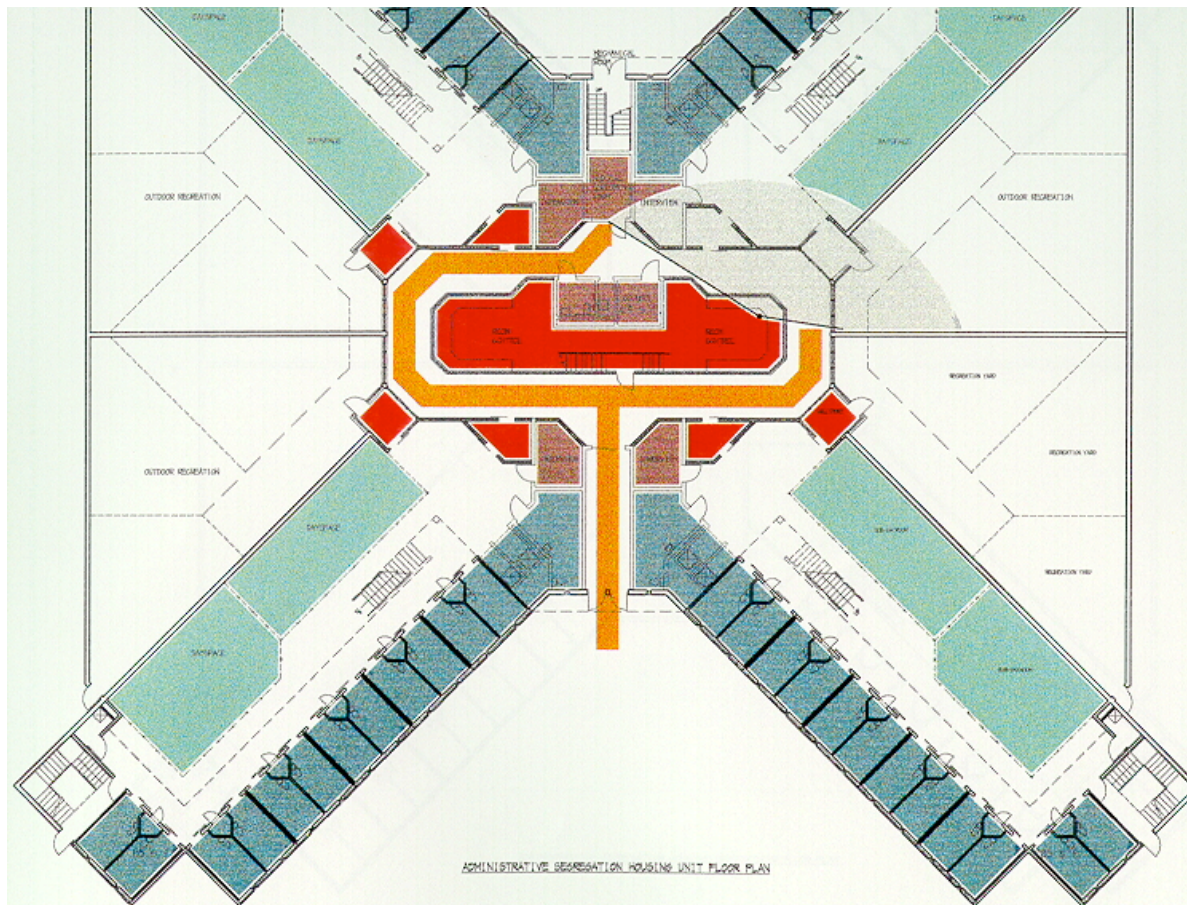
Contained

- Best of Both Worlds
- Good Visibility
- Space Efficiency

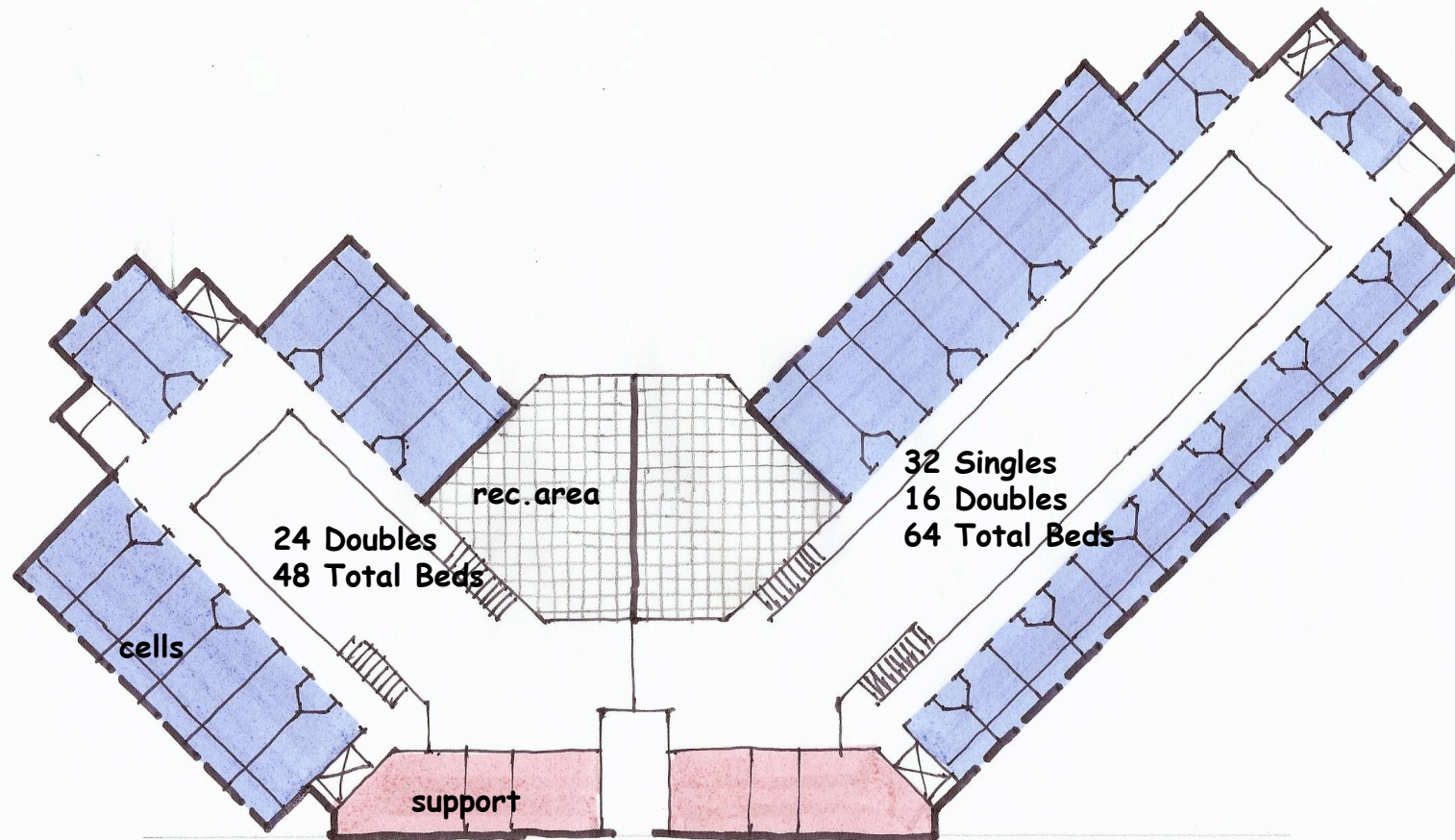


Parametrix, Inc.

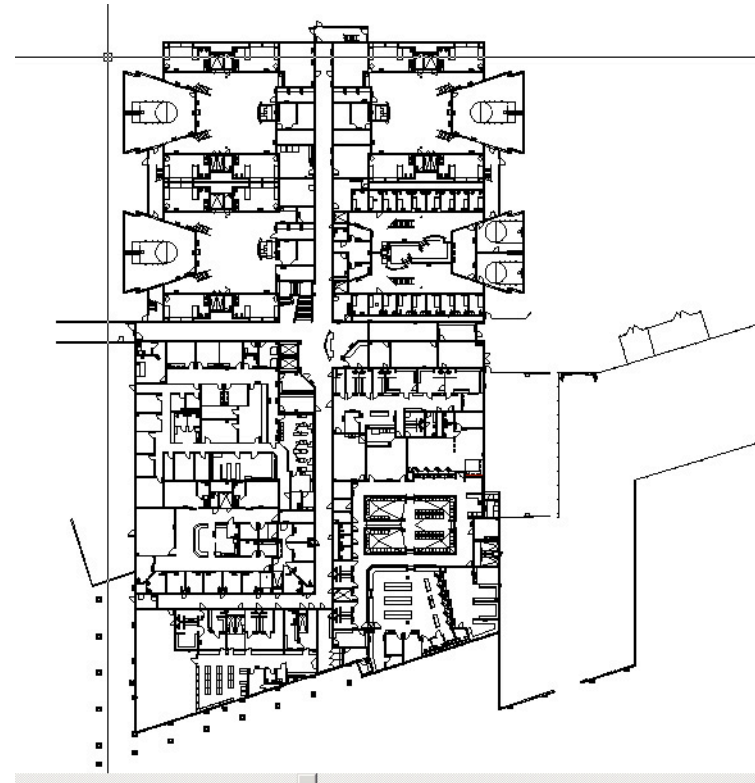
Housing Unit Options: High Security/ Segregation



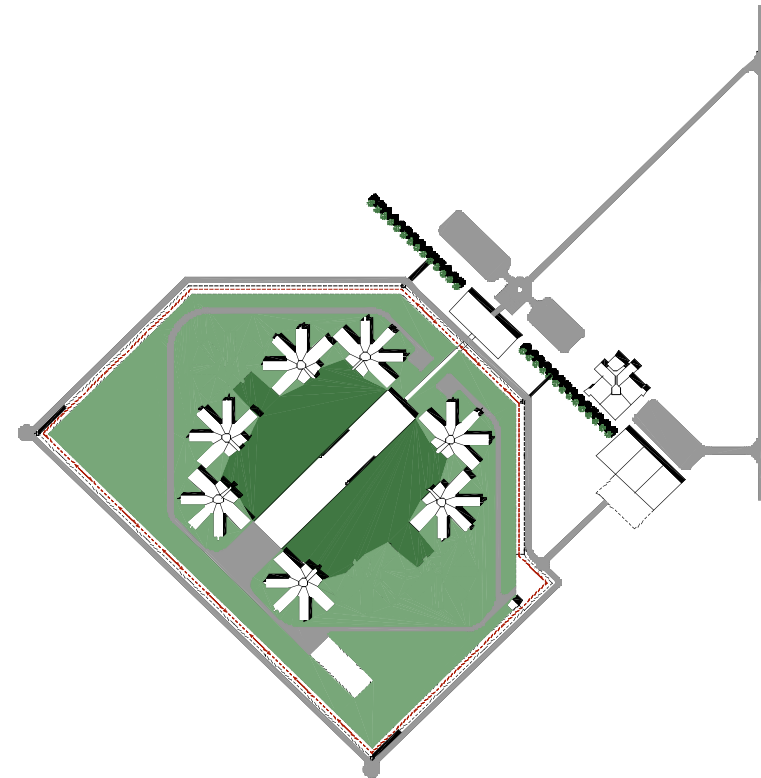
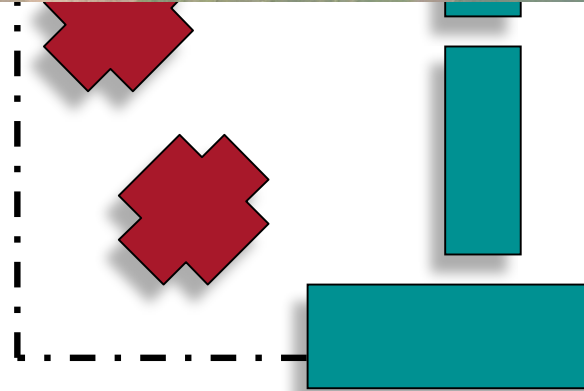
Housing Unit Options: General Population



Housing Unit Options: Minimum Security

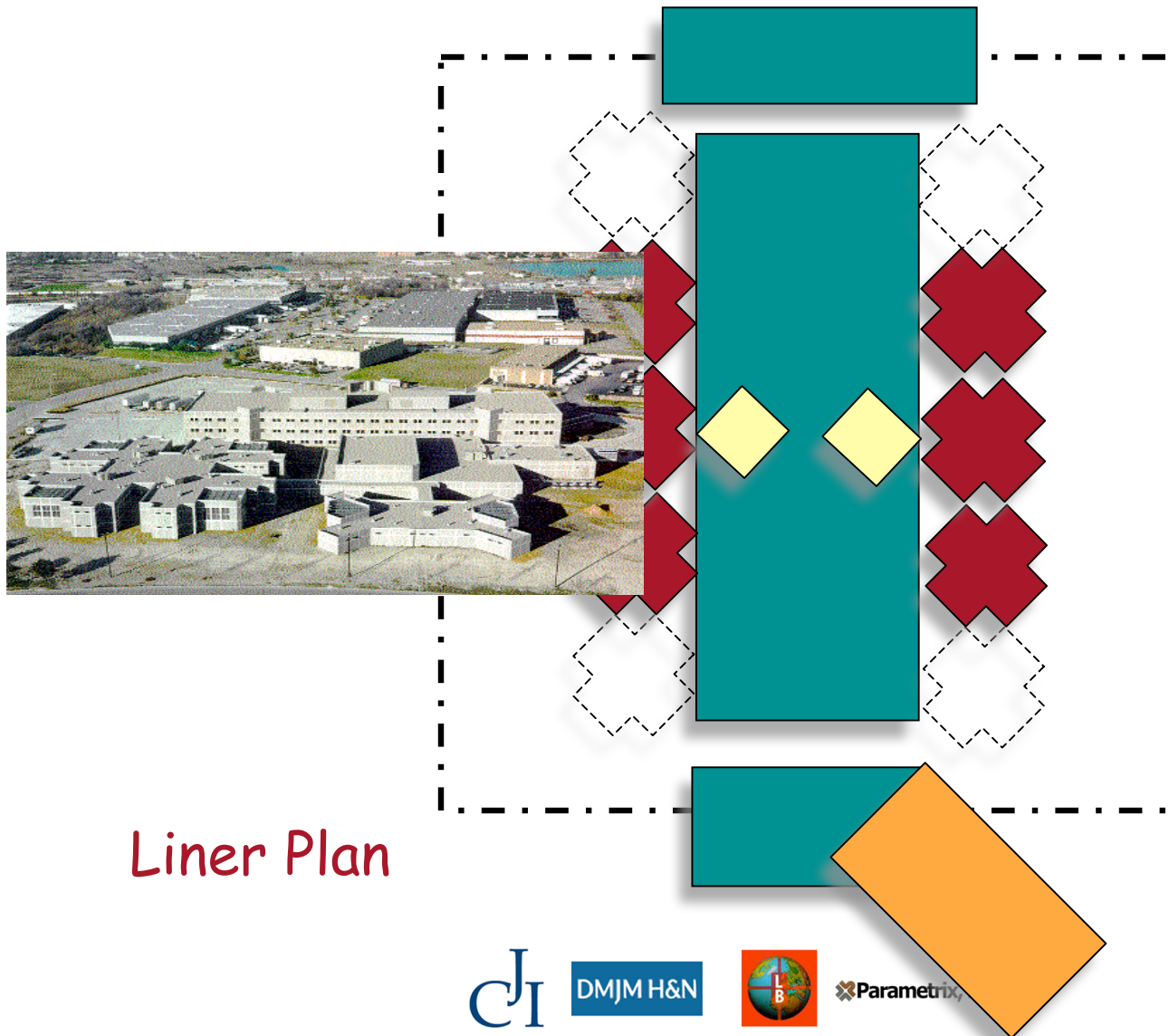


Configuration Options

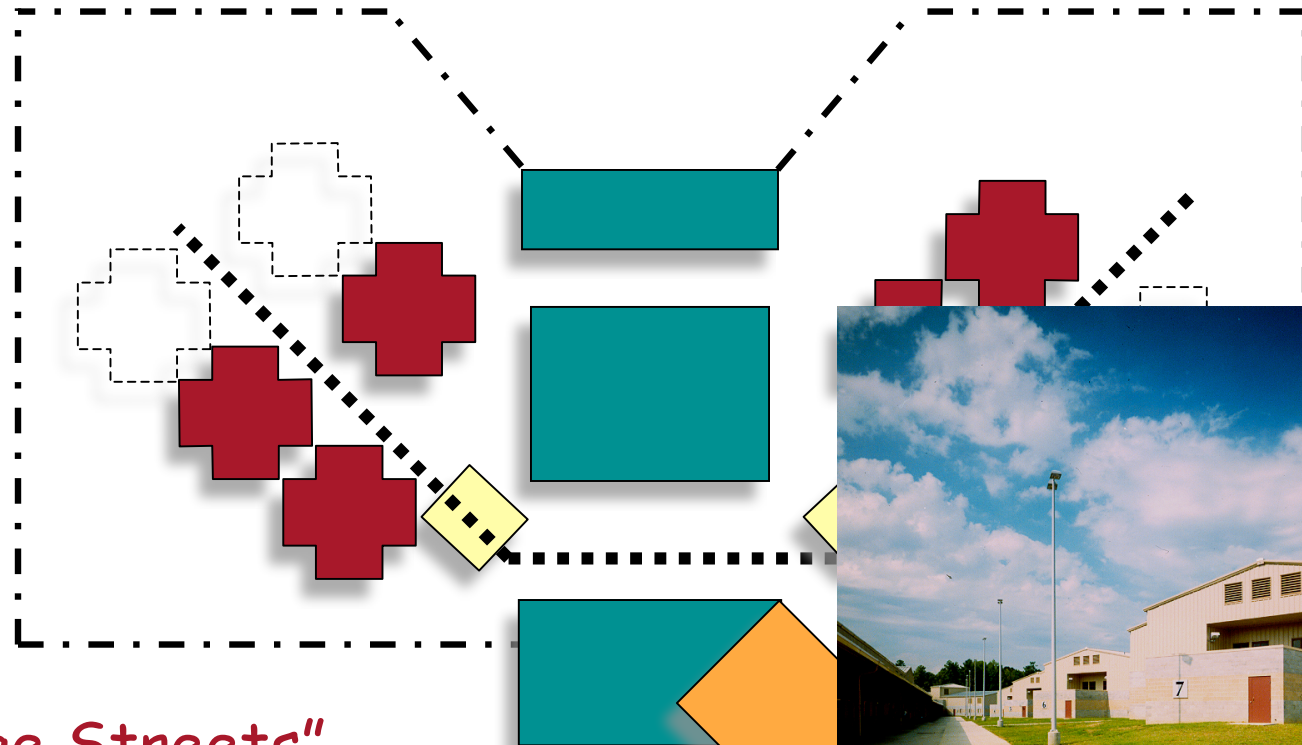


Zoned Campus

Configuration Options



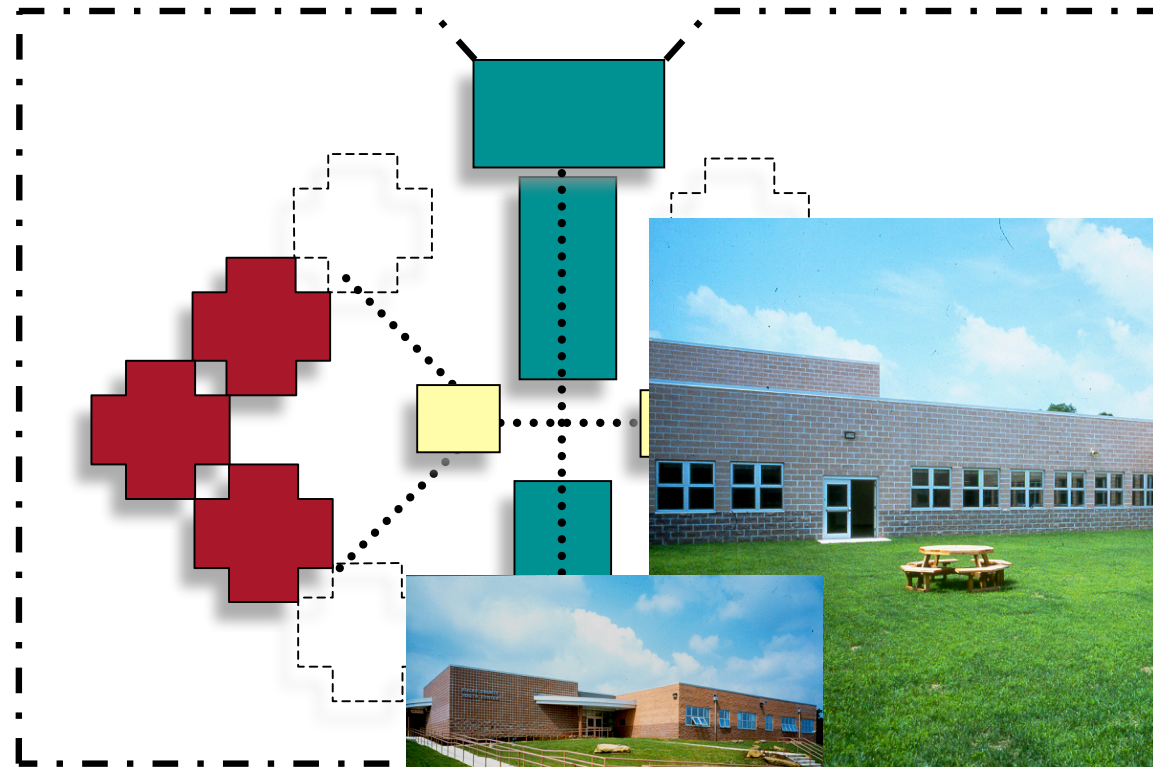
Configuration Options



"Village Streets"



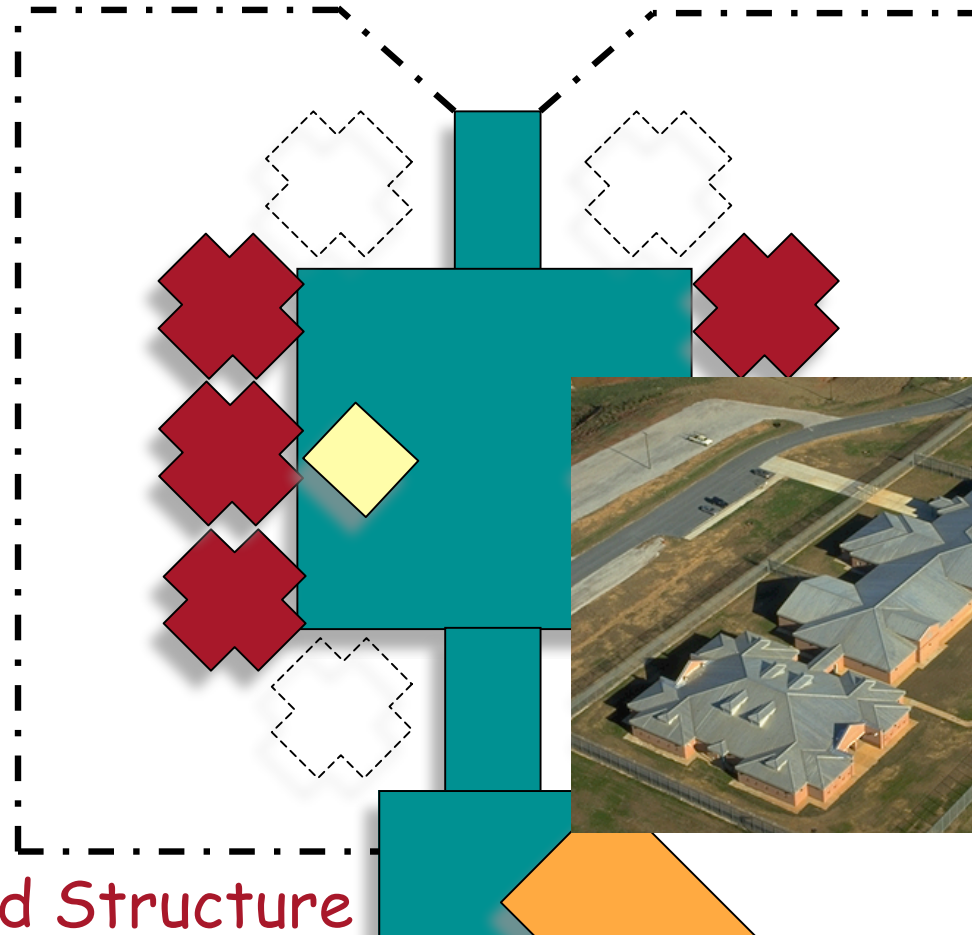
Configuration Options



Courtyard Scheme



Configuration Options



Integrated Structure



Inc.

Configuration Options: More Illustrations



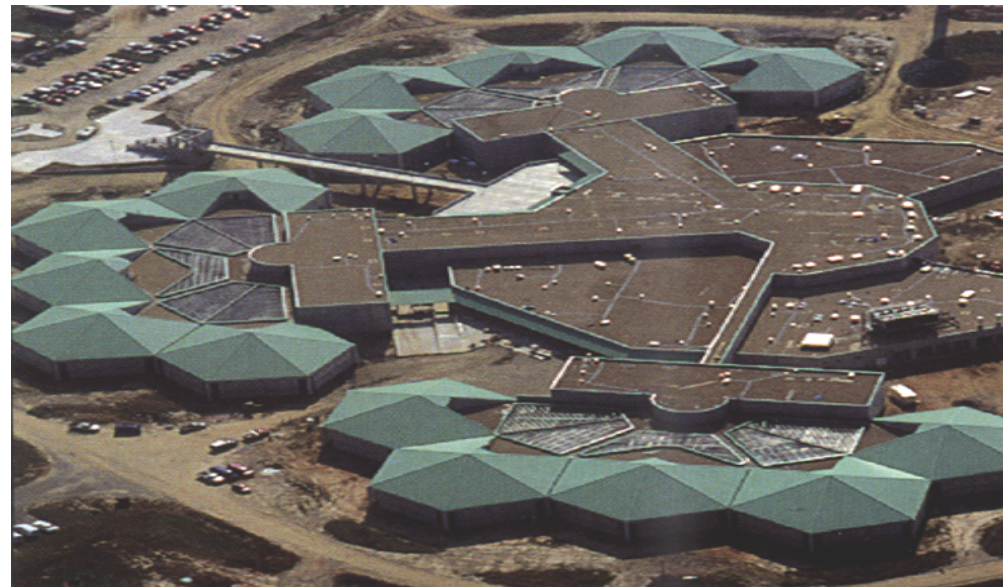
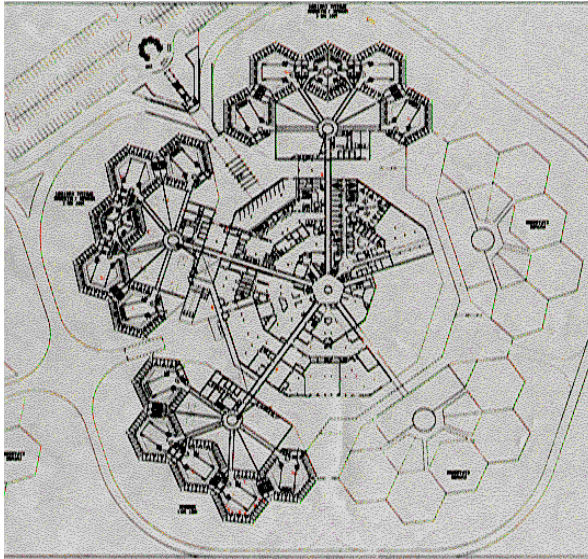
Configuration Options: More Illustrations



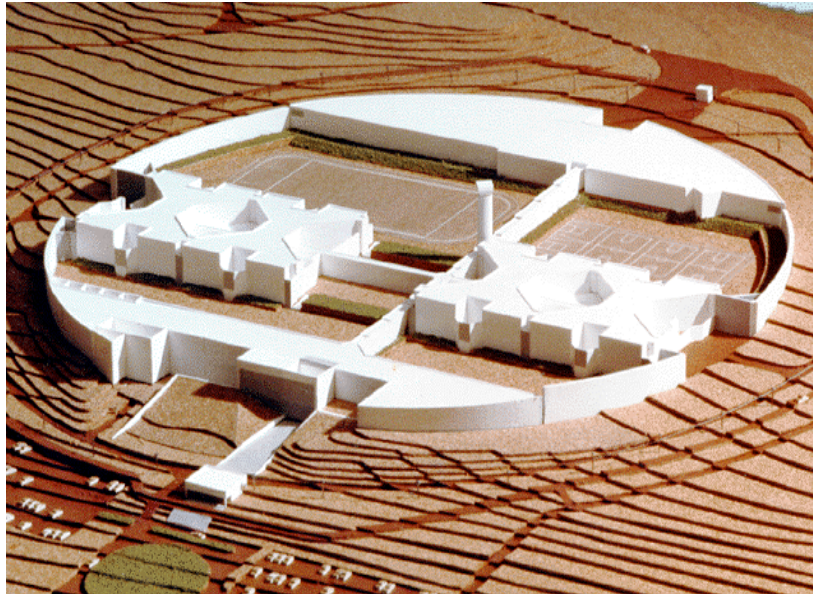
Configuration Options: More Illustrations



Configuration Options: More Illustrations

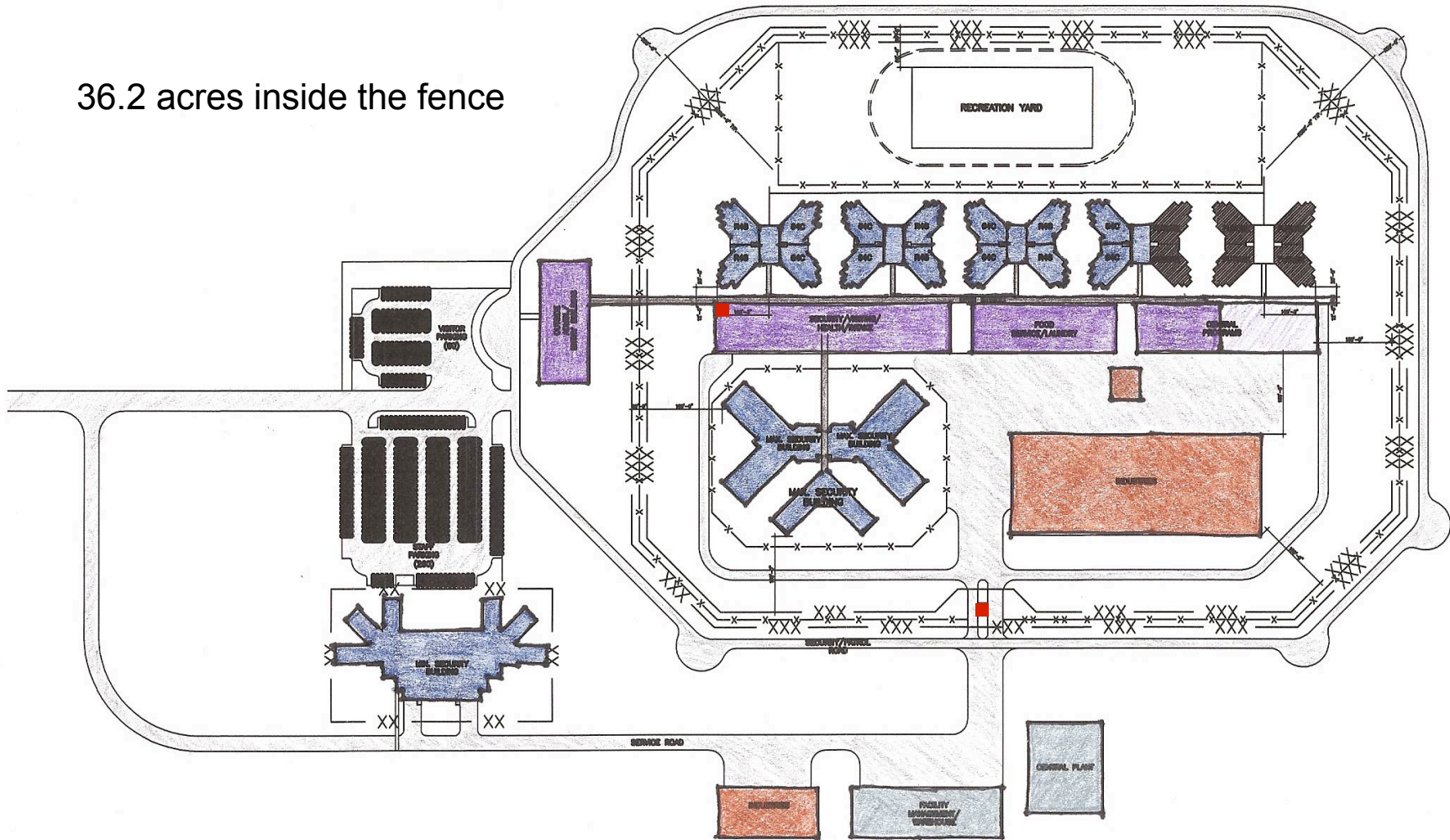


Configuration Options: More Illustrations



Initial Site Development Concept

36.2 acres inside the fence



Next Steps – January 29, 2008

- **Test Fits**
 - Placing the Model Program on the Various Sites Being Considered and Evaluating the Results
- **Reuse Plan**
 - Developing a Plan to Accomplish the “Model Program” Through Reuse/Expansion of the Existing NDSP



Next Steps – February 19, 2008

- **Options Investigation**
 - Evaluation of the Various Options to Determine Operational and Construction Costs of Each



DMJM H&N



Parametrix, Inc.