

# NDSP Project Update



## Comprehensive Facility Review

### North Dakota State Penitentiary and Missouri River Correctional Center

Presented to the  
**North Dakota Legislative Council**  
and its  
**Correctional Facility Review Committee**

**Criminal Justice Institute**

**November 5, 2007**



DMJM H&N



# Criminal Justice Institute Team Presenters



- George M. Camp, Criminal Justice Institute
- Louis Ragozzino, The Louis Berger Group
- Randy Withrow, The Louis Berger Group

# Meeting Agenda



- Review Project Goals
- Update Project Schedule
- Number and Type of Male Inmates
- Review Potential Prison Sites

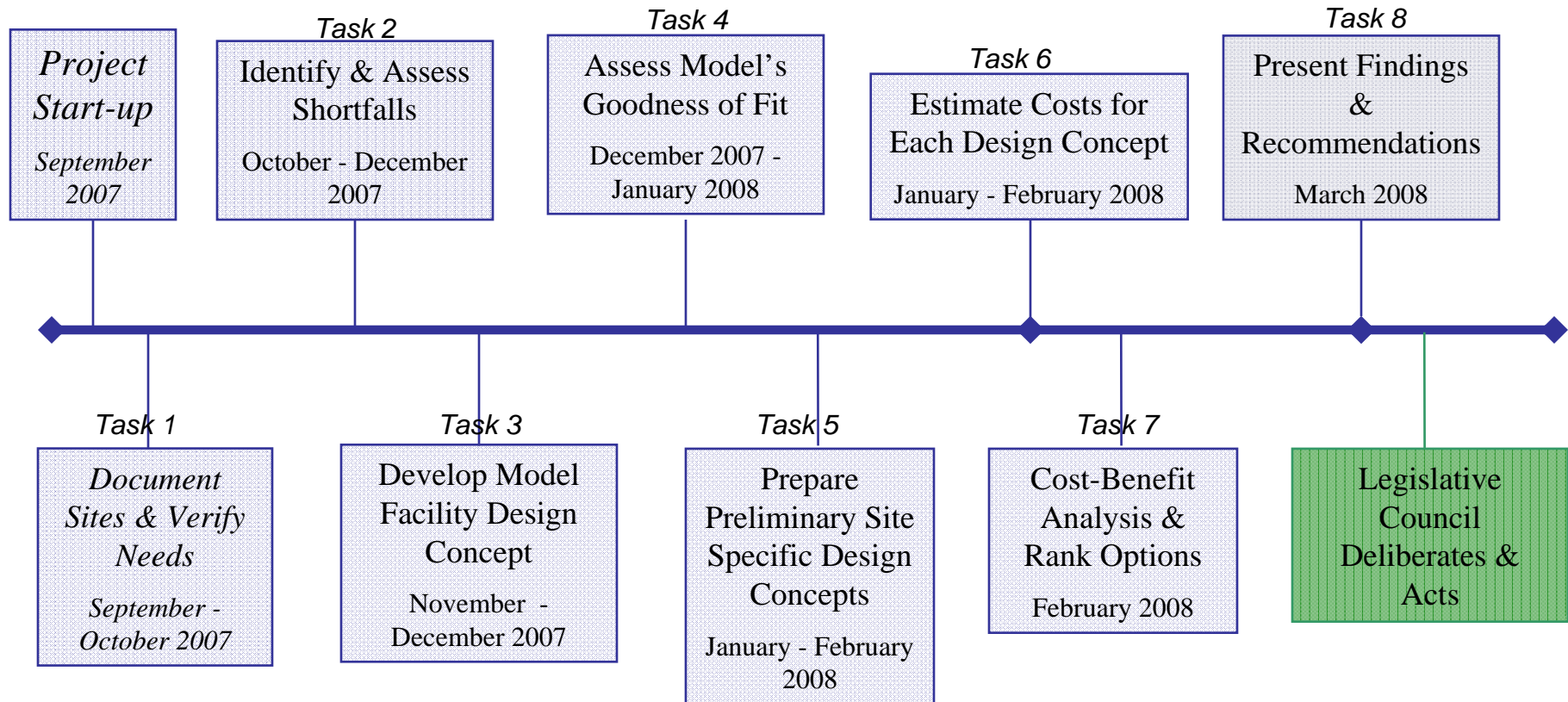
## Understanding the Project: North Dakota's Expectations



- North Dakota's Objectives: Determine the most desirable and cost-efficient option for meeting the future needs of the Penitentiary.
- CJI's Task: Evaluate options from which the Legislature can make an informed decision. Those options are:
  - Renovate & Expand at the existing site; or
  - New Construction at the existing site; or
  - New Construction at another site.

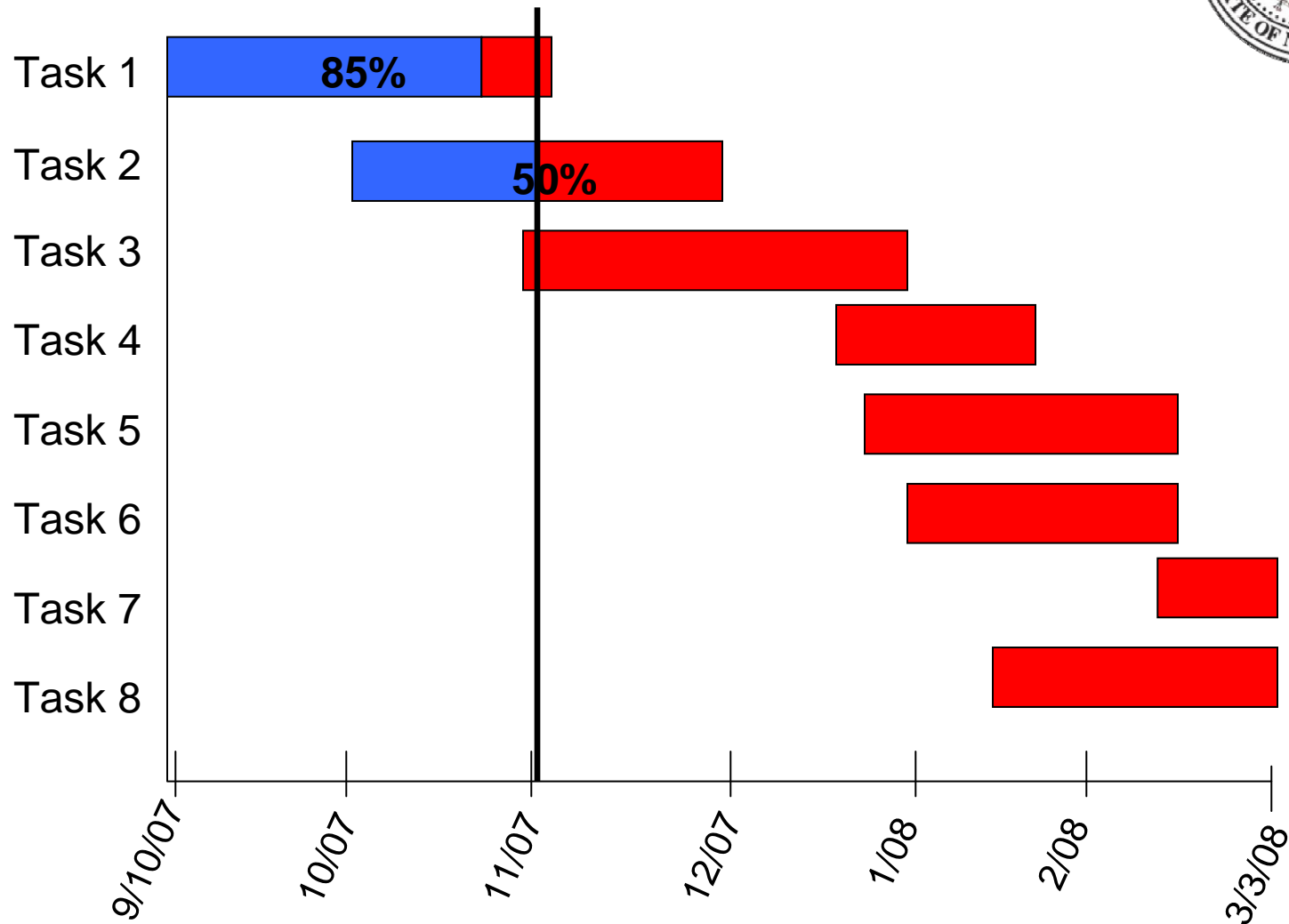


# Project Task Timeline





## Project Task Timeline Update



## Document Existing Conditions and Verify Projected Needs



- Healthcare / Medical
- Staffing Levels
- Daily Operating Cost
- Intake Processing
- *Population Projections*
- *Custody Levels*
- *Program Needs*
- Service Delivery Systems

## Actual and Projected Male Inmate Population 1999 - 2017



- Population projected to reach 1,727
- Increase of 435 inmates
- Increase of 33% over the next ten years



# Actual and Projected Male Inmate Population 1999 - 2017



Male Inmates on January 1



## Male Inmate Population Characteristics at Admission During FY'07



- 862 Inmates Admitted in FY 2007
- 22.0 Months - Mean Time to Serve
- 15.7 Months - Median Time to Serve
- 411 (47.7%) Probation Violation
- 117 (13.6%) Parole Violation
- 219 (25.3%) Meth Abuse

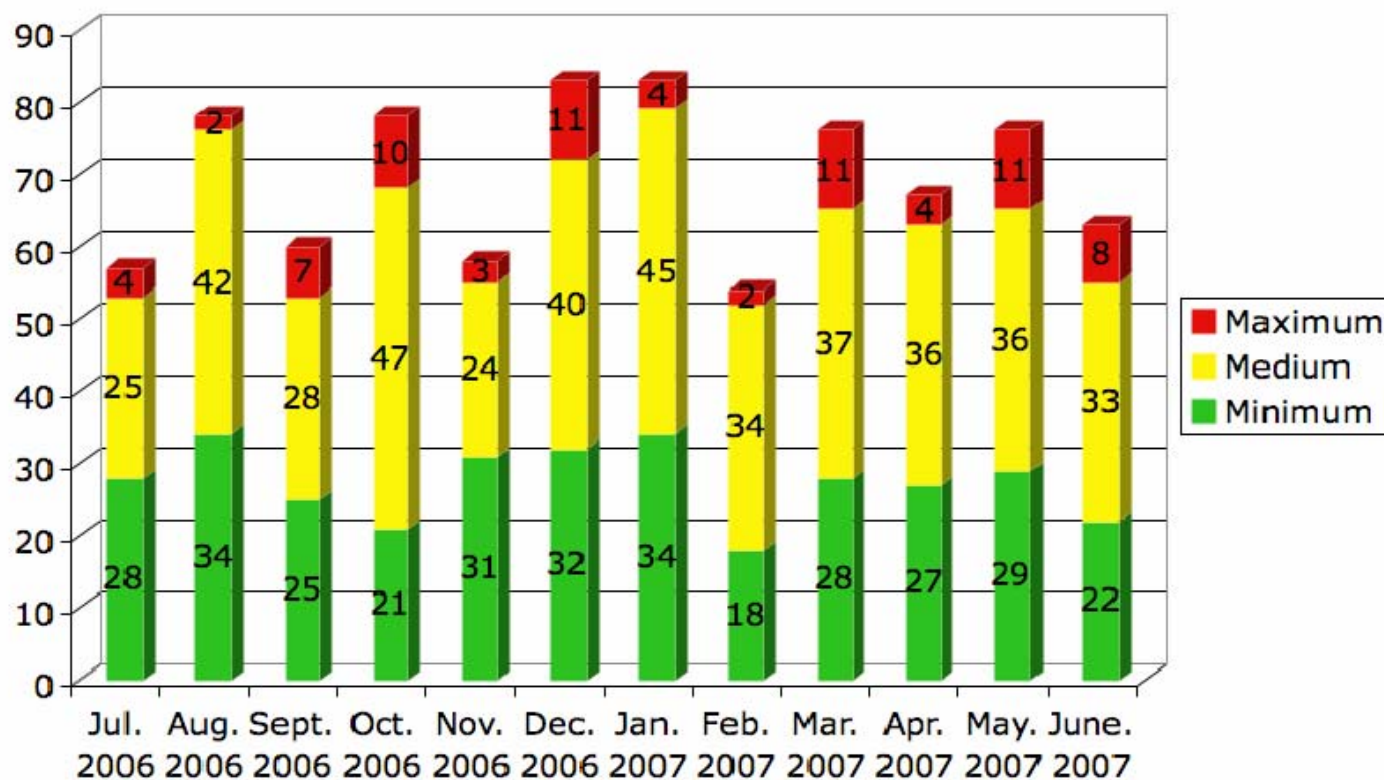
## Male Inmate Custody Level Distribution at Admission During FY'07



- 72 Inmates per Month
- Custody Level Distribution
  - 80 (9.3%) Maximum
  - 442 (51.3%) Medium
  - 340 (39.4%) Minimum



## Male Inmate Custody Level Distribution at Admission by Month During FY'07



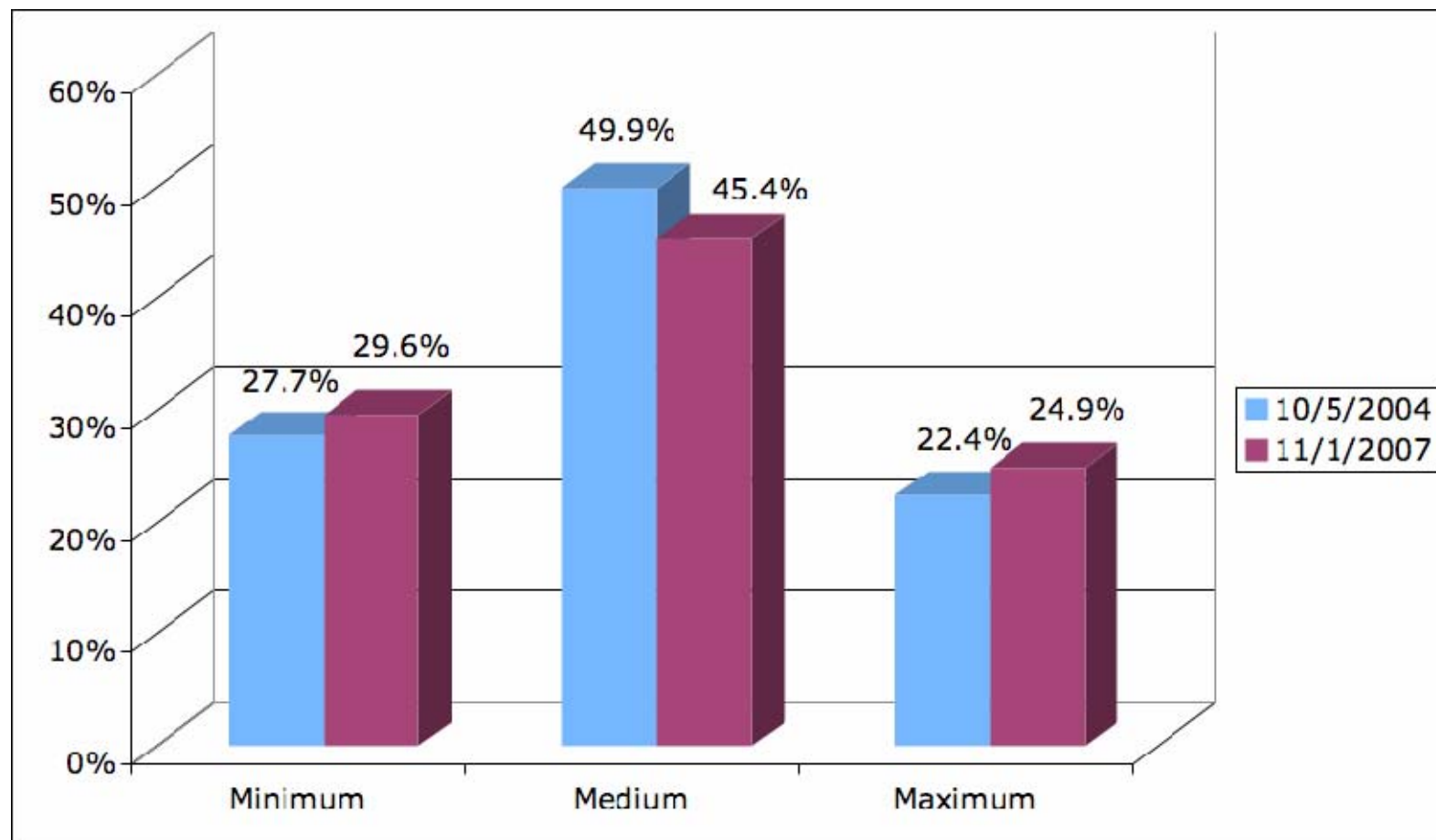
## Custody Levels of Male Inmates on 10-5-04 and 11-1-07



- Relatively Similar Distributions

	<u>10-5-04</u>	<u>11-1-07</u>
• Maximum	22.4%	24.9%
• Medium	49.9%	45.4%
• Minimum	27.7%	29.6%

## Custody Levels of Male Inmates on 10-5-04 and 11-1-07



## Custody Levels of Male Inmates at Admission Compared to 10-5-04 and 11-1-07



- Different Distributions

	<u>Admission</u>	<u>10-5-04</u>	<u>11-1-07</u>
• Maximum	9.3%	22.4%	24.9%
• Medium	51.3%	49.9%	45.4%
• Minimum	39.4%	27.7%	29.6%

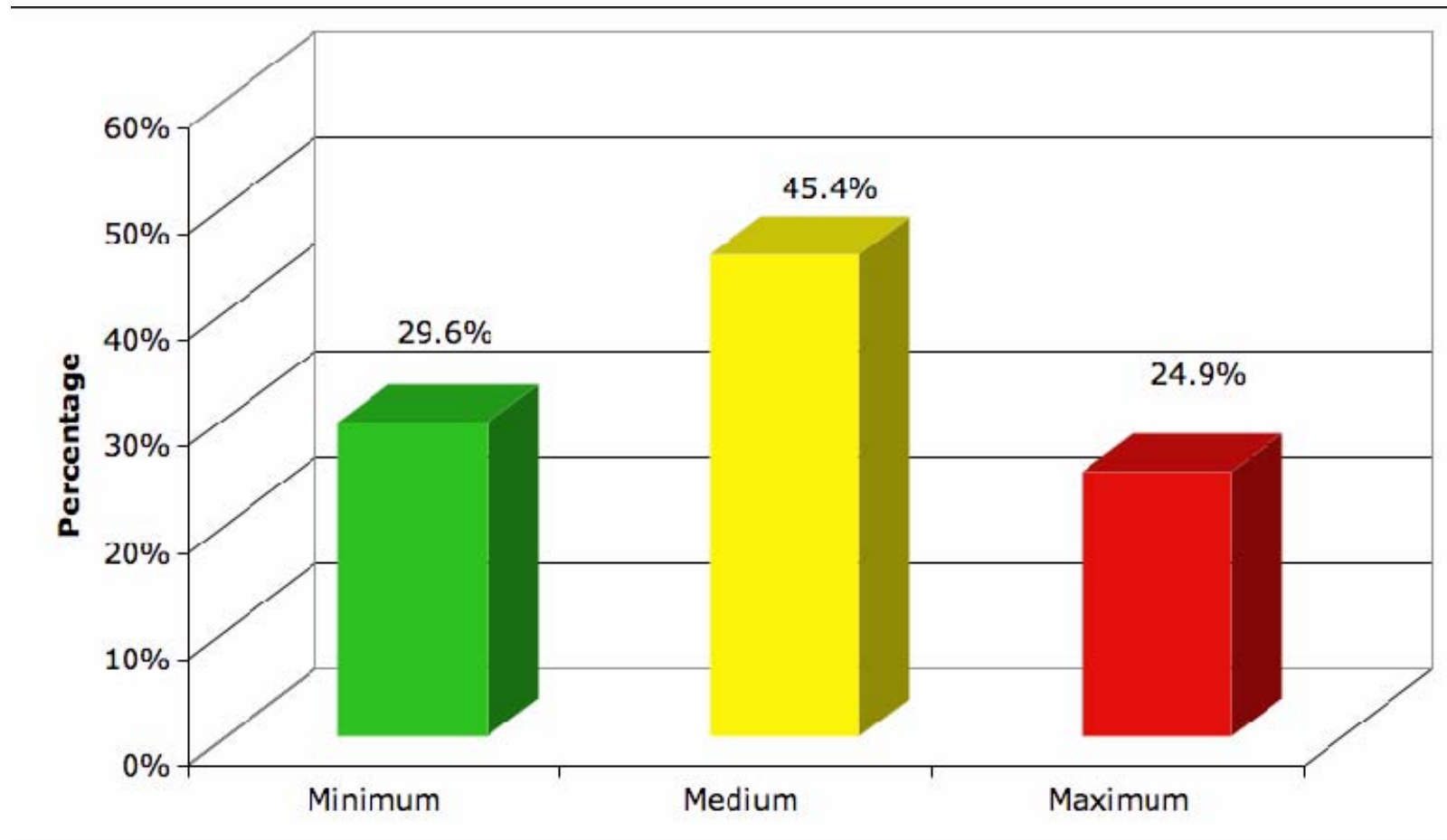
## Estimated Male Inmate Custody Level Distribution on January 1, 2017



- 1,727 Inmates Projected on 1-1-17
- 29.6% Minimum (N=512)
- 45.4% Medium (N=785)
- 24.9% Maximum (N=430)
- Estimate based on Custody Distribution on November 1, 2007



# Estimated Male Inmate Custody Level Distribution on January 1, 2017

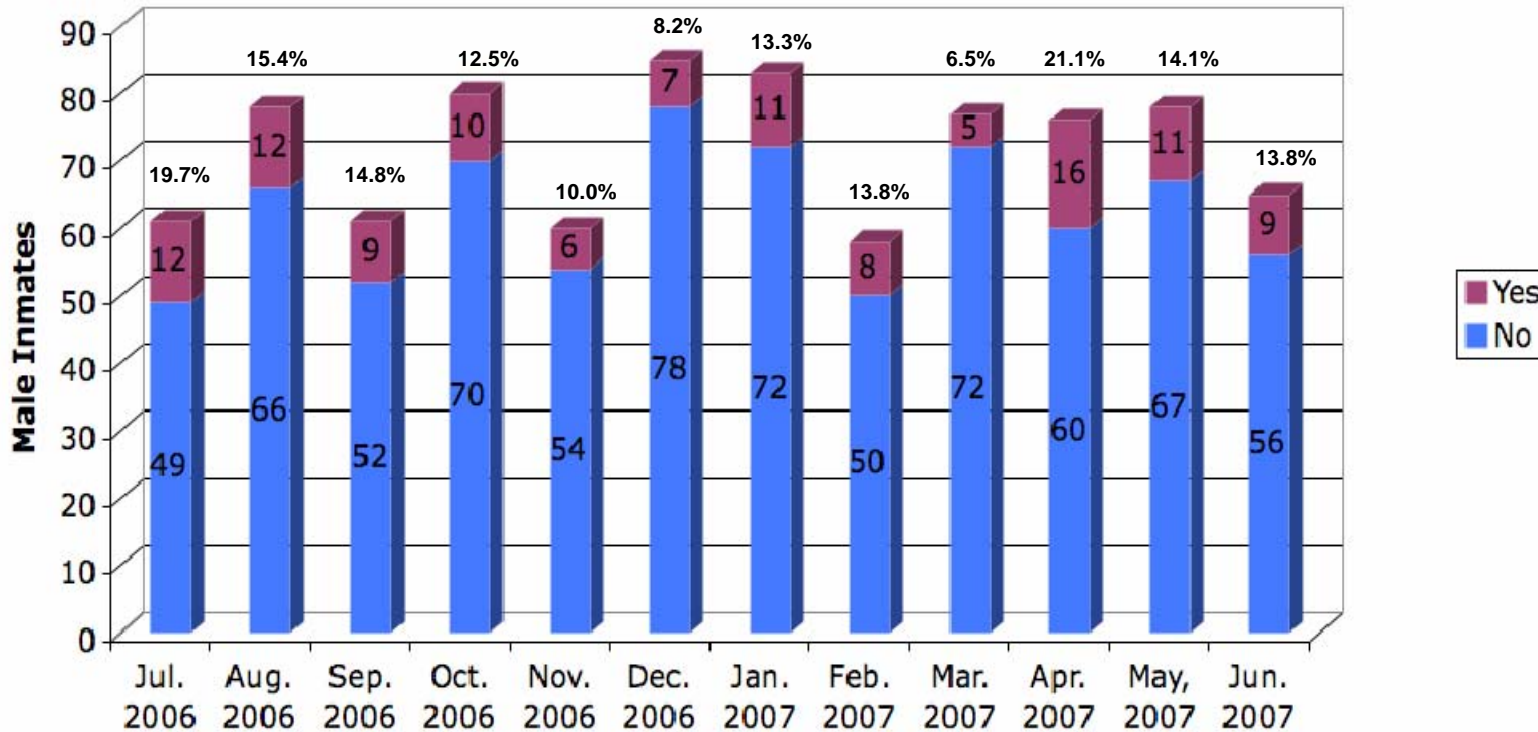


## Male Inmates Admitted During FY 2007 with a Parole Violation



- 862 Admitted
- 117 (13.6%) with Parole Violation
- Low of 6 (Nov. 2006)
- High of 11 (Jan. 2007)
- Percent Low 6.5% (March 2007)
- Percent High 21.1% (April 2007)

# Male Inmates Admitted Each Month During FY 2007 with a Parole Violation

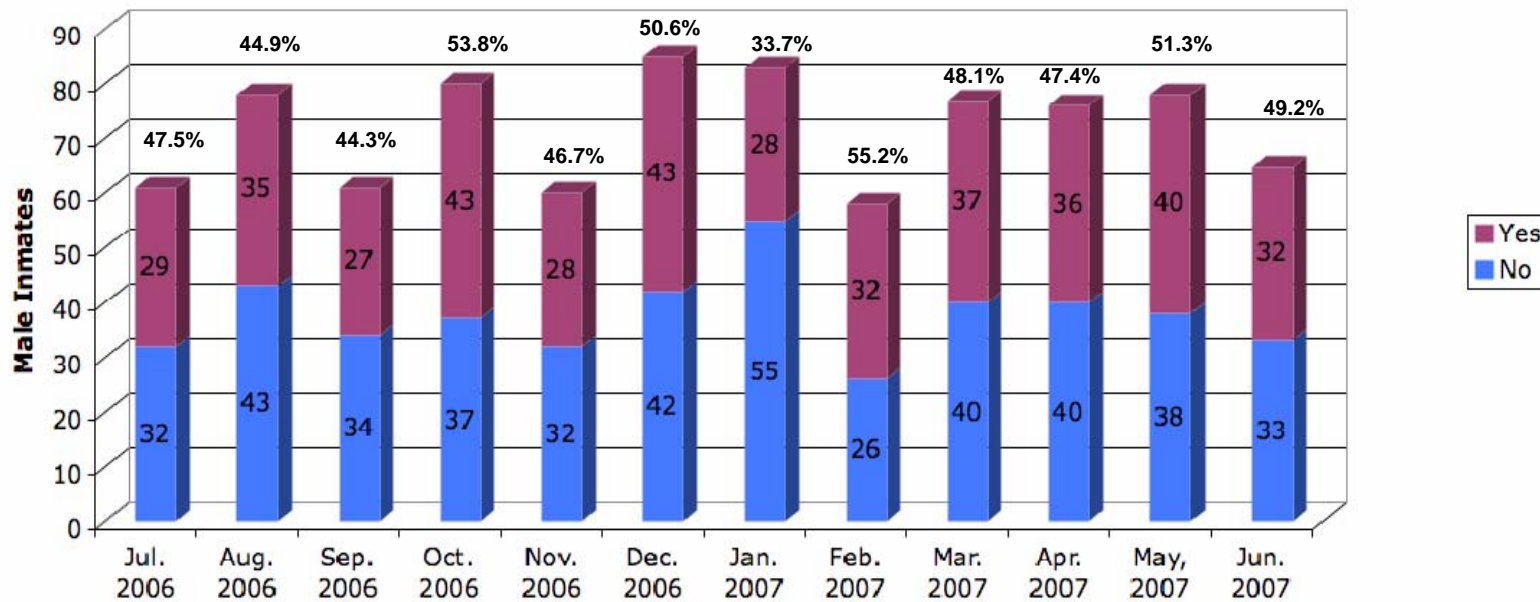


## **Male Inmates Admitted with a Probation Violation During FY 2007**



- 862 Admitted
- 411 (47.7% ) Admitted with Probation Violation
- Number with Probation Violation:
- Low of 27 (Sep. 2006)
- High of 43 (Oct. and Dec. 2006)
- Percent Low 33.7% (Jan. 2007)
- Percent High 55.2% (Feb. 2007)

# Male Inmates Admitted with a Probation Violation Each Month During FY 2007

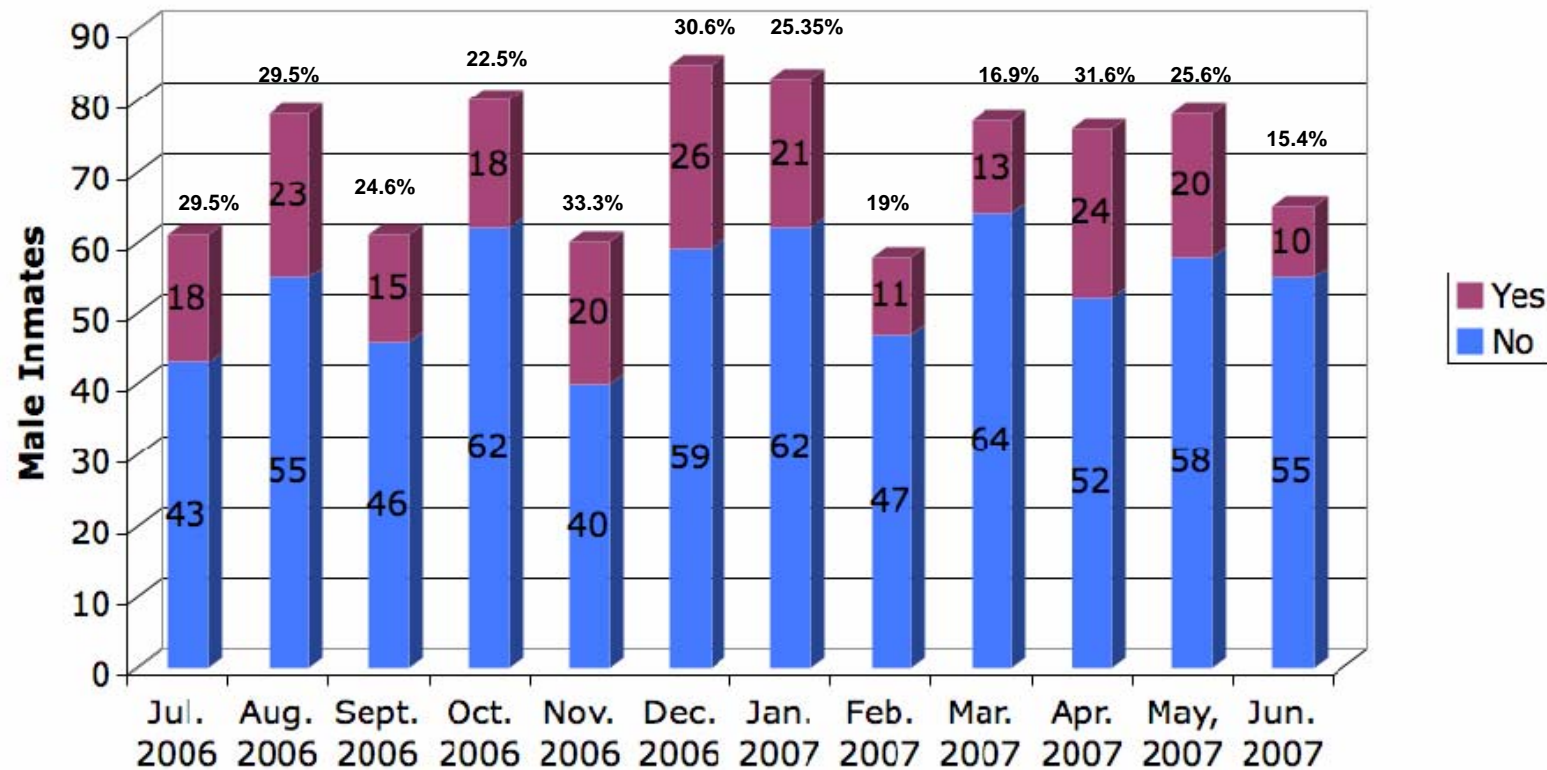


## Male Inmates Admitted with a Meth Charge During FY 2007



- 862 Admitted
- 219 (25.3%) with Meth Charge
- Low of 10 (June 2007)
- High of 26 (Dec. 2006)
- Percent Low 15.4% (June 2007)
- Percent High 31.6% (April 2007)

# Male Inmates Admitted with a Meth Charge Each Month During FY 2007





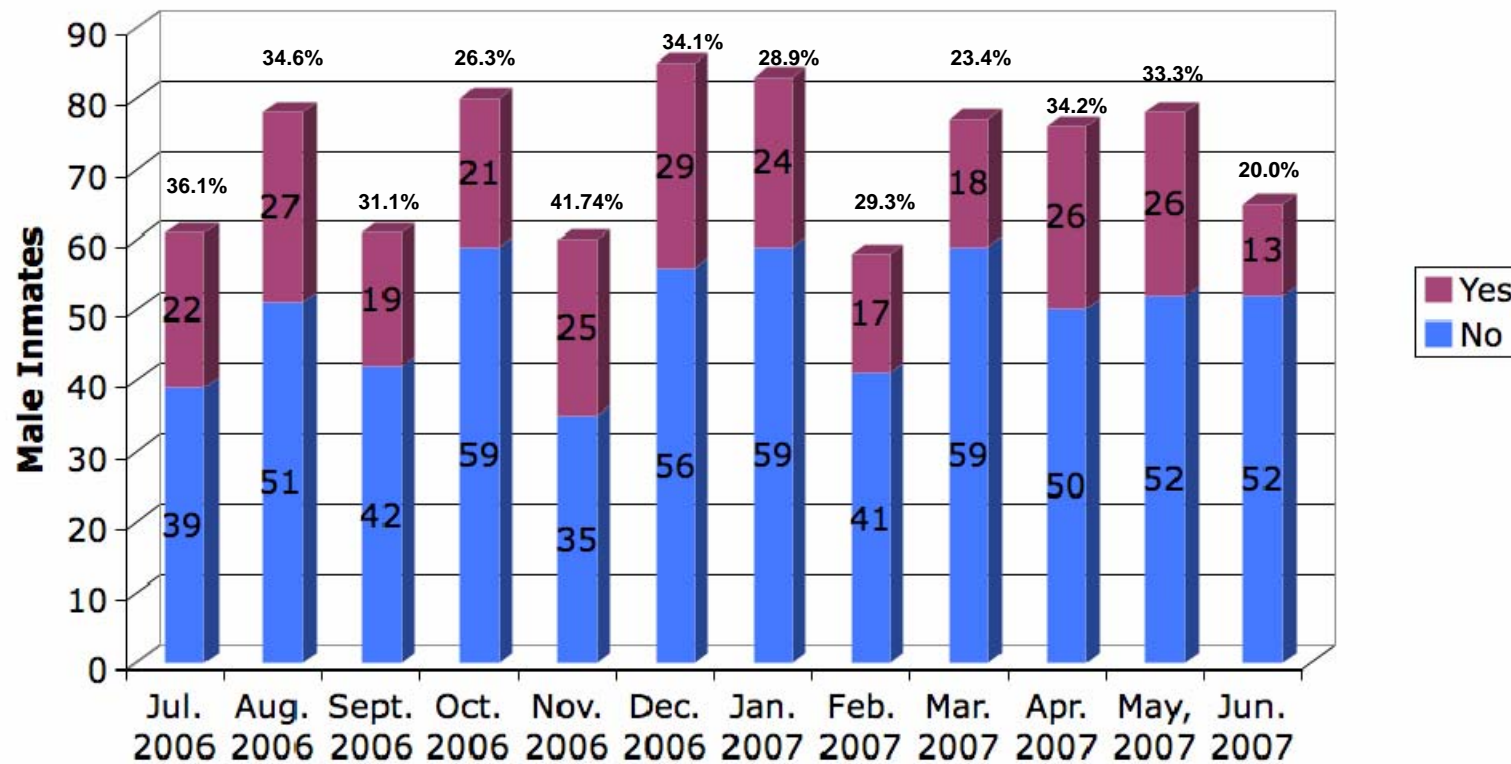
## Male Inmates Admitted in FY 2007 with a Meth Allegation



- 862 Admitted
- 219 (31.1%) with Meth Allegation
- Low of 13 (June 2007)
- High of 29 (Dec. 2006)
- Percent Low 20.0% (June 2007)
- Percent High 36.1% (July 2006)



# Male Inmates Admitted with a Meth Allegation Each Month in FY 2007

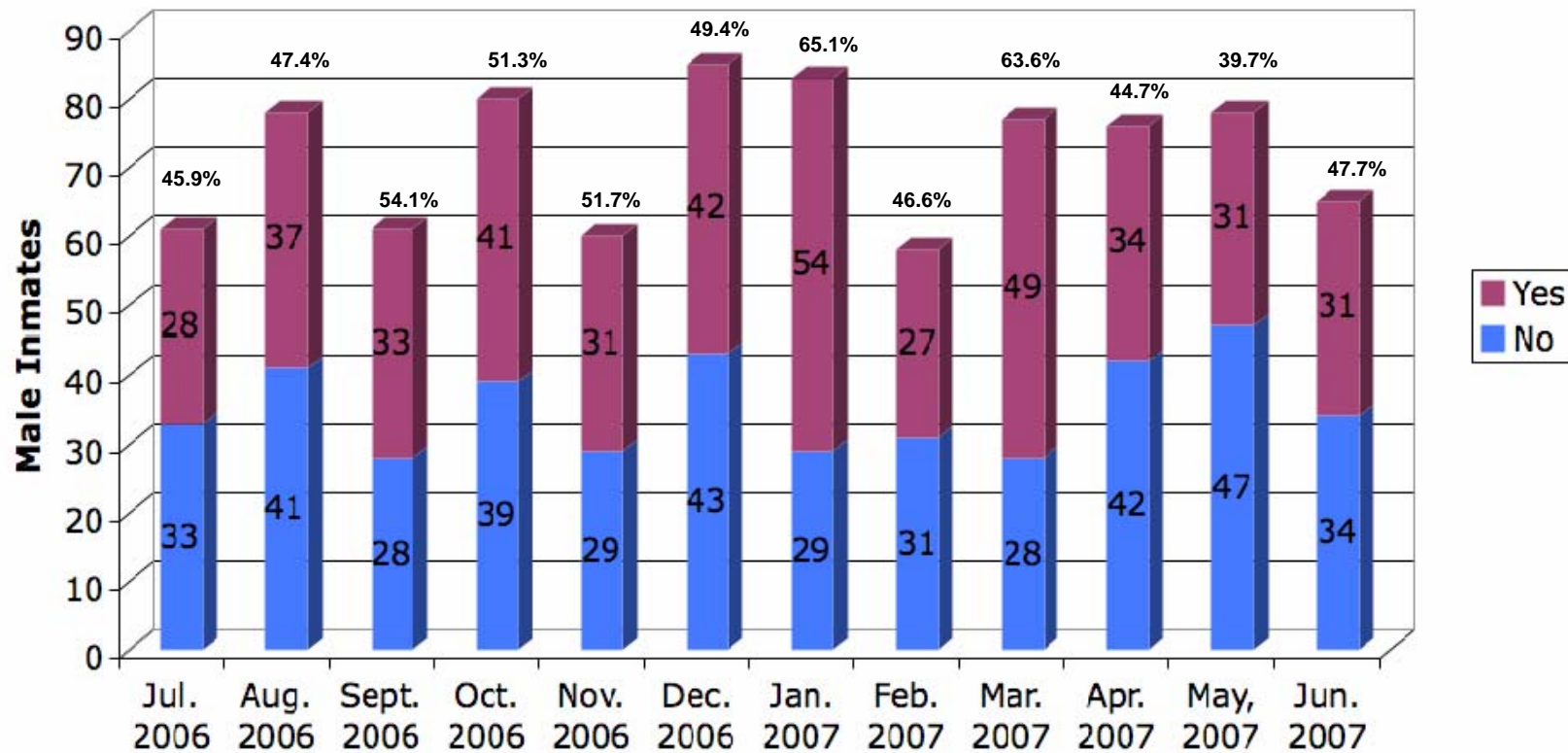


## Male Inmates Admitted with a New Crime in FY'07



- 862 Admitted
- 438 (50.6%) New Crime
- High of 54 (Jan. 2007)
- Low of 27 (Feb. 2007)
- Percent High 65.1% (Jan. 2007)
- Percent Low 44.7% (Apr. 2007)

# Male Inmates Admitted with a New Crime Each Month in FY'07



## Age of Male Inmates at Admission During FY'07



- 862 Admitted
- 72 Average Monthly Admissions
- 31 Average Age
- 76 Oldest Age
- 16 Youngest Age
- 11.3% - 21 or younger
- 4.8% - 50 or older

# Age Ranges of Male Inmates at Admission During FY'07

