



## Legislative Issues Committee (LIC)

May 28, 2008 - 3:30 pm - 5:00 pm -

ITV Meeting

(DRAFT 4)

### NDREA Pre-Legislative Positions for 2009 - 2011

LIC Recommendation of priorities for 2009 Legislative Session

- 1) Autonomy – NDREAs
  - a) Strongly support the autonomy of local REAs to select the services that meet the needs of their members.
  - b) Support the hiring of staffs through local schools districts and/or recognized organizations.
- 2) Accountability: NDREAs
  - a) Support the Administrative & Students Services as outlined in REA century code.
  - b) Supports the operation of five (5) Administrative and five (5) Students as a minimum for a functional REA.
  - c) Opposes any mandatory expansion of required administrative or student services.
- 3) Funding: NDREAs
  - a) Support State funding for REAs to establish a solid Systematic Service Delivery Model of Administrative and Student Services that will support local district and North Dakota K-12 education.
  - b) Support the distribution of funds directly to REAs on the same cycle as foundation aid payments.
  - c) Support an REA Funding Request of \$3,000,000 for 2009-2011 to establish and deliver Administrative and Student Services as identified by local REAs
  - d) Recognize the need to address Equity among REAs, and support legislation that will create a mechanism to provide an equitable distribution of funds to all REAs.

#### LIC Members Present - 2007-2009

REA	MEMBER	REA ROLE
RRVEC	Jennifer Johnson	Governing Board
GNWEC	LuAnn Casler	Governing Board
RESP*	Non-voting participant	Governing Board
NCEC	Deb Syvertson –	Coordinator
SEEC	Kyle Davison	Coordinator
NESC	Denise Wolf	Coordinator
MDEC	Kathryn Pederson	Representative
MREC	Paul Johnson	Administrator
SCEC	Gerald Christianson	Administrator

Guests: Tom Decker – DPI, Megen Kadrmas - Recorder , \*Maurice Hardy

**South East Education Cooperative (SEEC) & South Central Education Cooperative Merger**  
**July 1<sup>st</sup>, 2008**

Students: 30,000

Schools: 32

Teachers: 3500

**Benefits:**

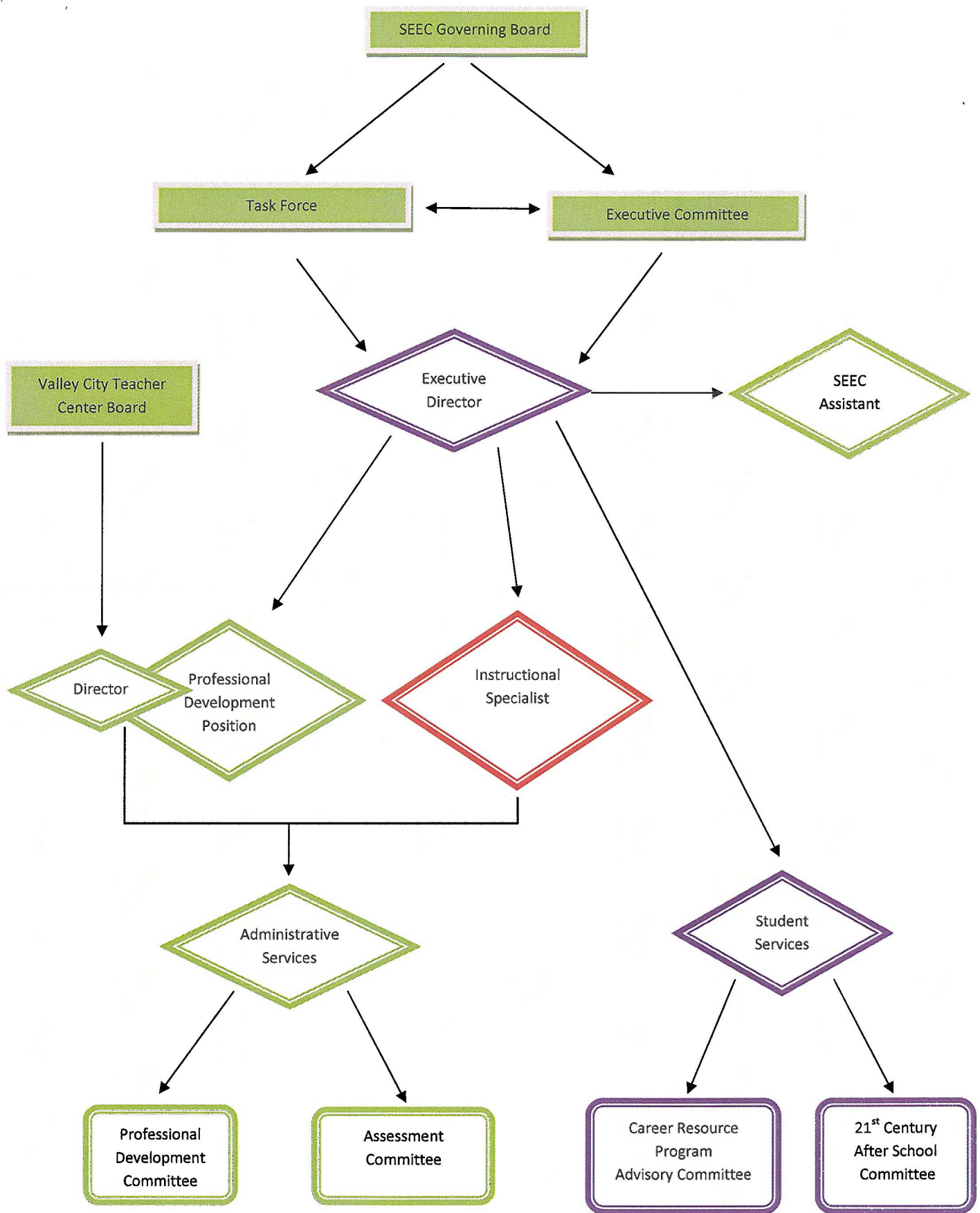
- Utilize the savings from one less REA Coordinator and hire a staff position to support different needs
- Have additional resources to focus on specific needs of schools
- More schools to partner which have similar needs
- Ability to leverage larger grants

**Disadvantages:**

- The SEEC had established trust and a working relationship amongst it's schools and having new schools could set us back
- The land area is too big
- How will it be governed?
- Will this allow for enough input?

**Early Results:**

- We hired a Director of Professional Development in partnership with the Valley City Area Teacher Center to be housed in Valley City.
- We've created a new Governance Model for our region
- We created a monthly newsletter for Board Members and School Districts
- All SEEC schools will be using NWEA MAP as an assessment tool
- Creating multiple deliver centers for services



**The Task Force will function as the permanent operational arm of the SEEC.**

**Functions:**

1. Identify specific short and long-term services including resources needed for SEEC schools.
2. Develop permanent or temporary working groups or committees to perform functions.
3. Increase opportunities for partnerships inside and outside the SEEC which align to goals.
4. Create key indicators which measure success of projects and goals.

**Members:**

1. The Task Force will have up to 16 members. There will be 2 members from each region, with one member being an administrator and the second member being an administrator or teacher. These members will be elected or appointed by each region for 2 year terms.
2. The Task Force will work by majority vote and elect a Chair and Vice-Chair.
3. The Task Force Chair will be the Lead Administrator for the SEEC.
4. The Chair and Vice-Chair will be part of the SEEC Executive Committee
5. The Executive Director is an ex-officio member of the Executive Committee.

**Length of Term:**

1. The Task Force will have a Chair and Vice-Chair which are elected for 2 year terms.

**Reporting Responsibilities:**

1. The Task Force will report to both the SEEC Executive Committee and the Governing Board.
2. All meetings shall be documented, with minutes circulated and preserved.

The Executive Committee acts on behalf of the SEEC Board of Directors when the board is not in session.

**Functions:**

1. Oversees the administration and financial statements of the SEEC.
2. Provides direction and feedback to the Executive Director regarding policy priorities and strategic goals.
3. Ensures good governance of the SEEC.
4. Ensures timely preparation of the Annual Report and Audited Statements.
5. Oversees the work of the SEEC Task Force and Committees
6. Oversees the hiring and annual performance evaluation of the Executive Director

**Members:**

1. The President, 1st Vice-President and 2<sup>nd</sup> Vice-President of the SEEC Governing Board and the Chair and Vice-Chair of the SEEC Task Force.
2. The President acts as Chair of the committee.
3. The Executive Director is an ex-officio member of the Executive Committee.

**Length of Term:**

1. President and 2- Vice-Presidents shall be elected to 2 year terms.

**Frequency of Meetings:**

The committee will meet at the call of the chair by teleconference, IVN or in person as budget and agenda allow.

**Reporting Responsibility:**

1. The Executive Committee reports to the Board of Directors on a quarterly basis with additional information and updates as needed by e-mail, mail or fax when appropriate.
2. All meetings shall be documented, with minutes circulated and preserved.

## SEEC Governing Board Regions

Group	Schools	# Students	Total Students	
Region 1	Fargo	10493	10493	
Region 2	West Fargo	6175	6175	
Region 3	Farimount	123	2422	
	Hankinson	309		
	Lidgerwood	190		
	Wahpeton	1266		
	Richland	314		
	Wyndmere	220		
Region 4	Edgeley	215	1654	
	LaMoure	327		
	Montpelier	108		
	Ellendale	351		
	Oakes	502		
	Litchville-Marion	151		
Region 5	Milnor	275	1737	
	Sargent Central	255		
	North Sargent	213		
	Lisbon	651		
	Ft Ransom	25		
	Enderlin	318		
Region 6	Mapleton	64	2038	
	Northern Cass	513		
	Kindred	668		
	Central Cass	793		
Region 7	Jamestown	2192	2651	
	Pingree-Buchanan	151		
	Fessenden-Bowdon	159		
	Medina	149		
Region 8	Maple Valley	269	2249	
	Valley City	1058		
	Barnes County N.	312		
	Griggs Co Central	289		
	Midkota	118		
	Hope	116		
	Page	87		
			29419	