

Energy Development and Transmission Committee



Antelope Valley Station Demonstration Project

August 2010

Curtis Jabs

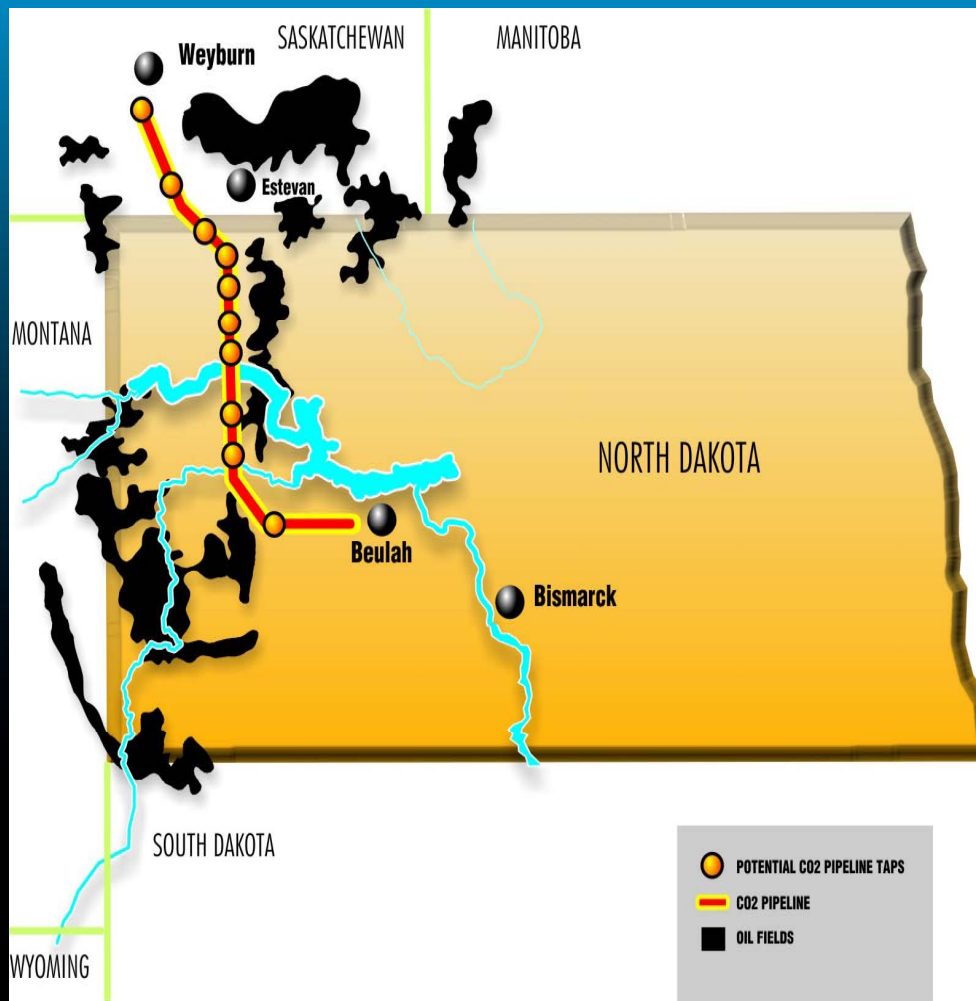
Basin Electric Power Cooperative

Antelope Valley Station



Great Plains Synfuels Plant

CO₂ Pipeline

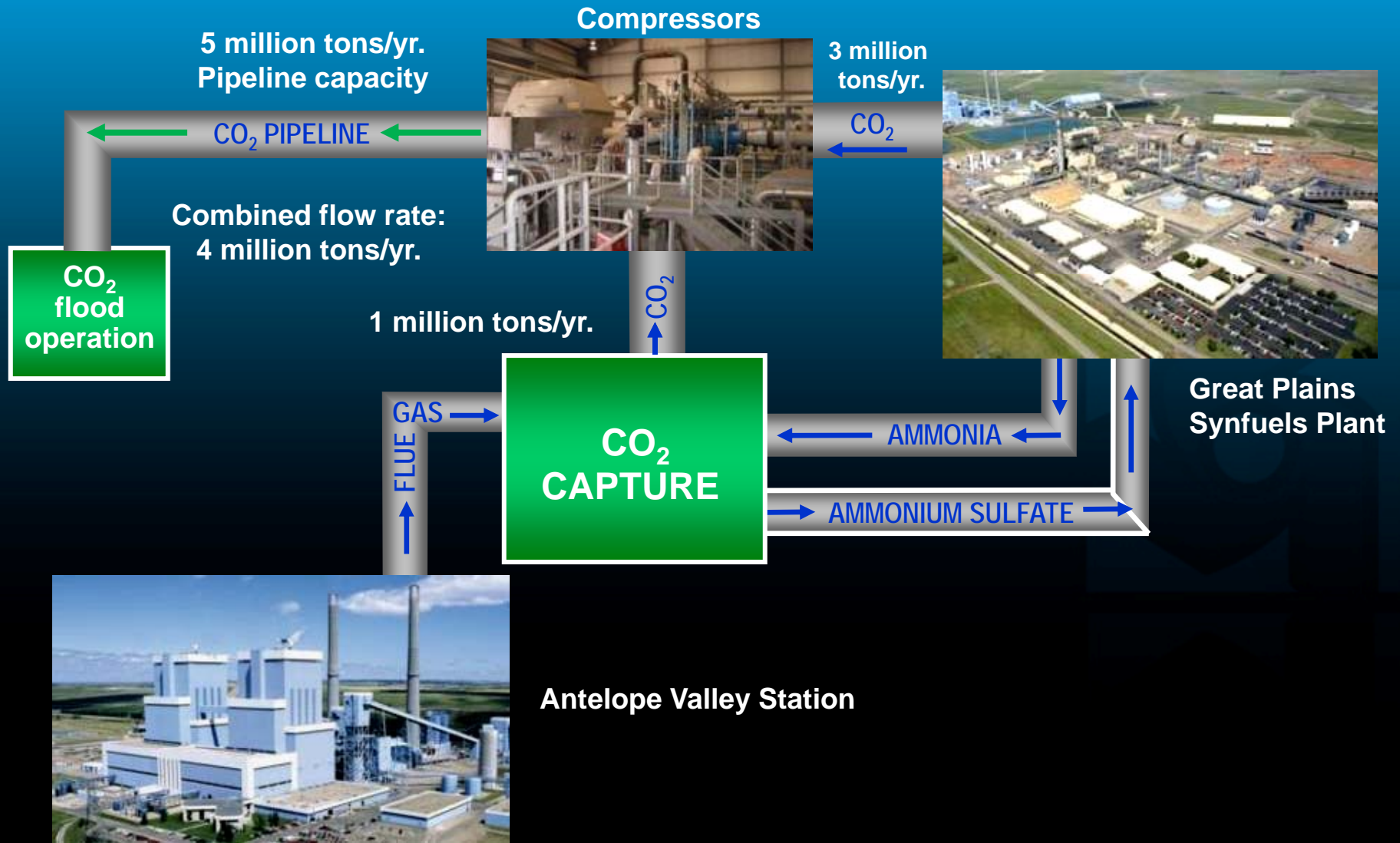


- 205 miles
- 14" and 12" carbon steel pipe
- Strategically routed through Williston Basin oil fields
- Over 16 million tons of CO₂ compressed and transported since 2000

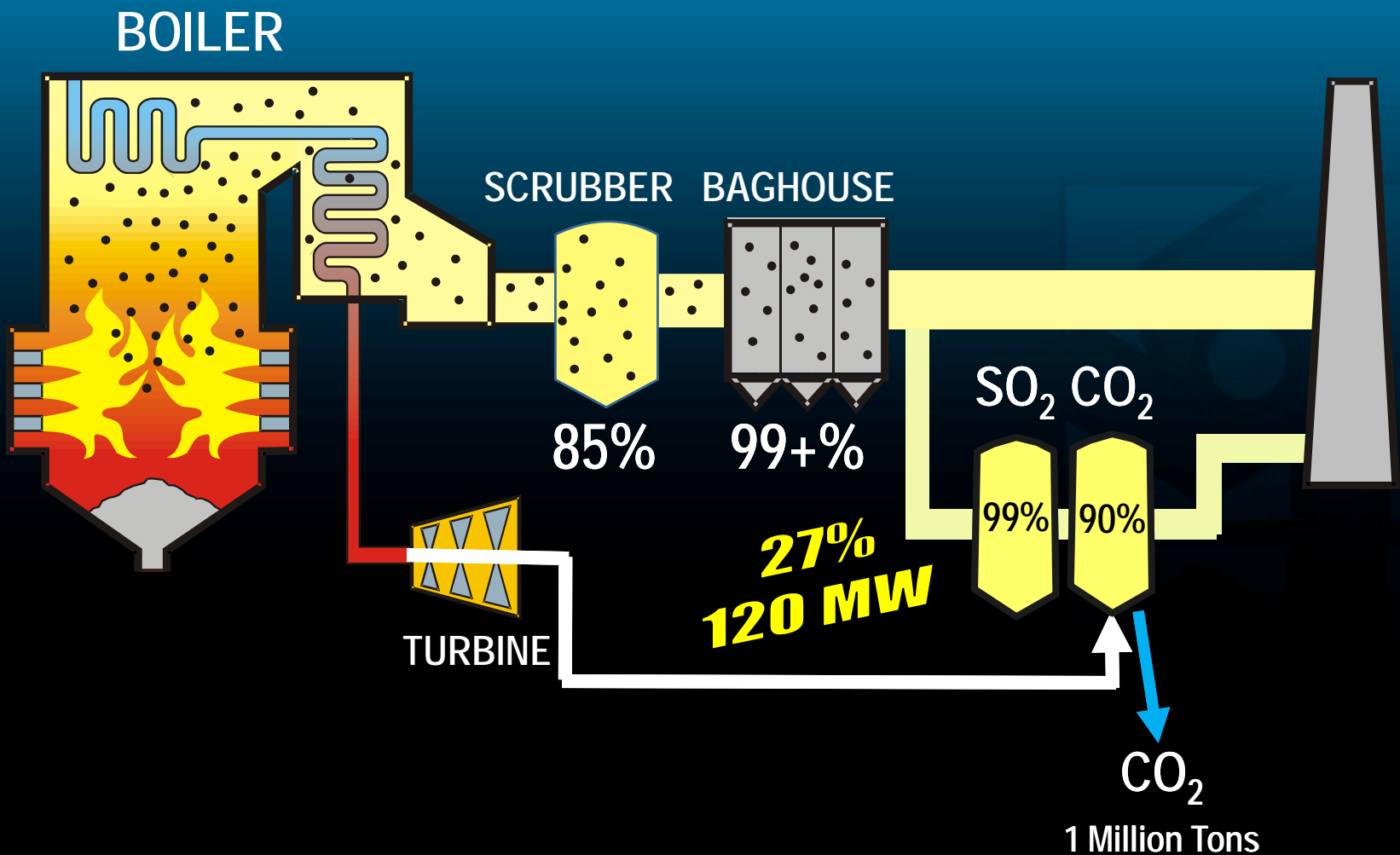
Existing Infrastructure

- 1 Million Tons Capacity in CO₂ Pipeline
- Pipe CO₂ to DGC – Install Fourth Compressor
- 11 taps in US strategically placed along pipeline route
- Ammonia production and Ammonium Sulfate processing capacity

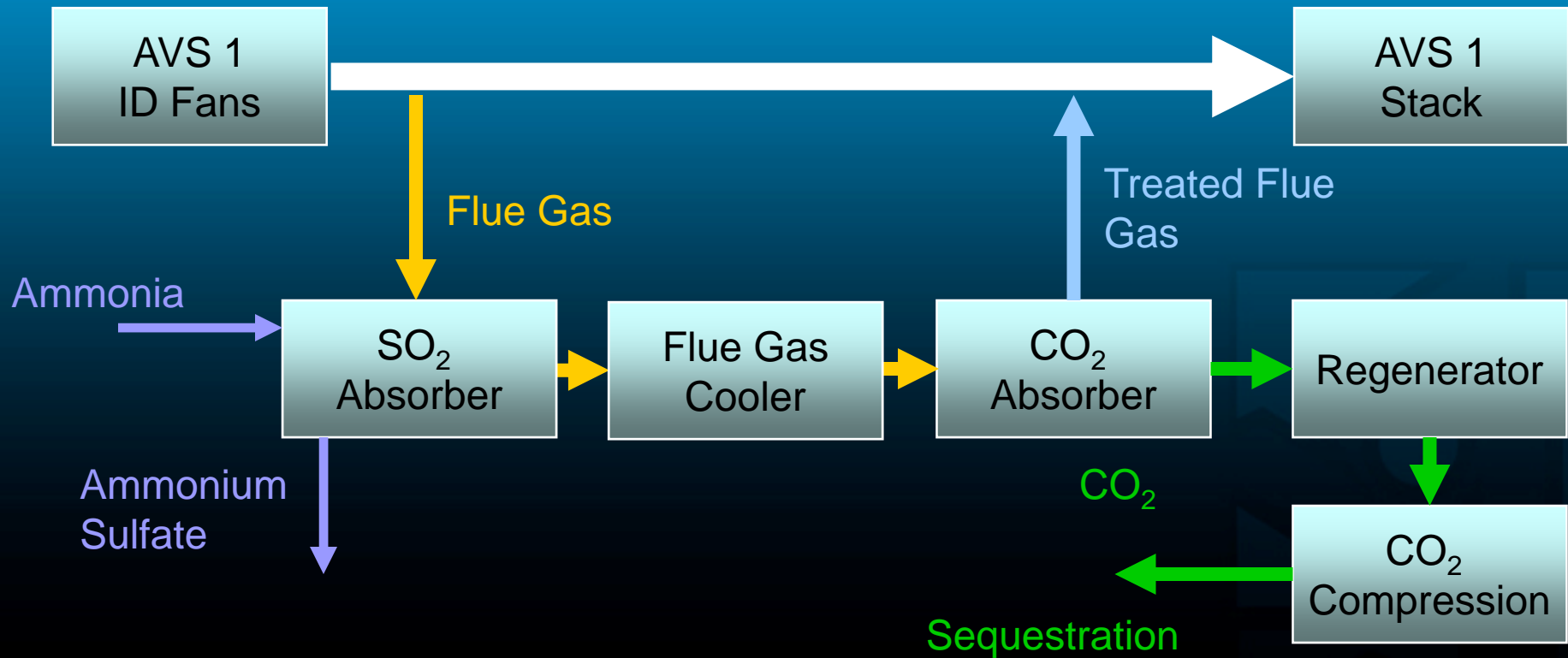
Carbon Capture Demonstration Project



AVS CO₂ Demonstration Project



CO₂ Capture Process



Interfaces

- Flue Gas
- Ammonia
- Ammonium Sulfate
- Product CO₂
- Steam and Condensate
- Cooling Water
- Electrical
- Instrumentation & Controls



Interfaces

- Service Water
- Potable Water
- Fire Protection Water
- Sanitary and Storm Sewers
- Nitrogen
- Instrument and Service Air
- Reclaimer Waste

FEED Scope and Deliverables



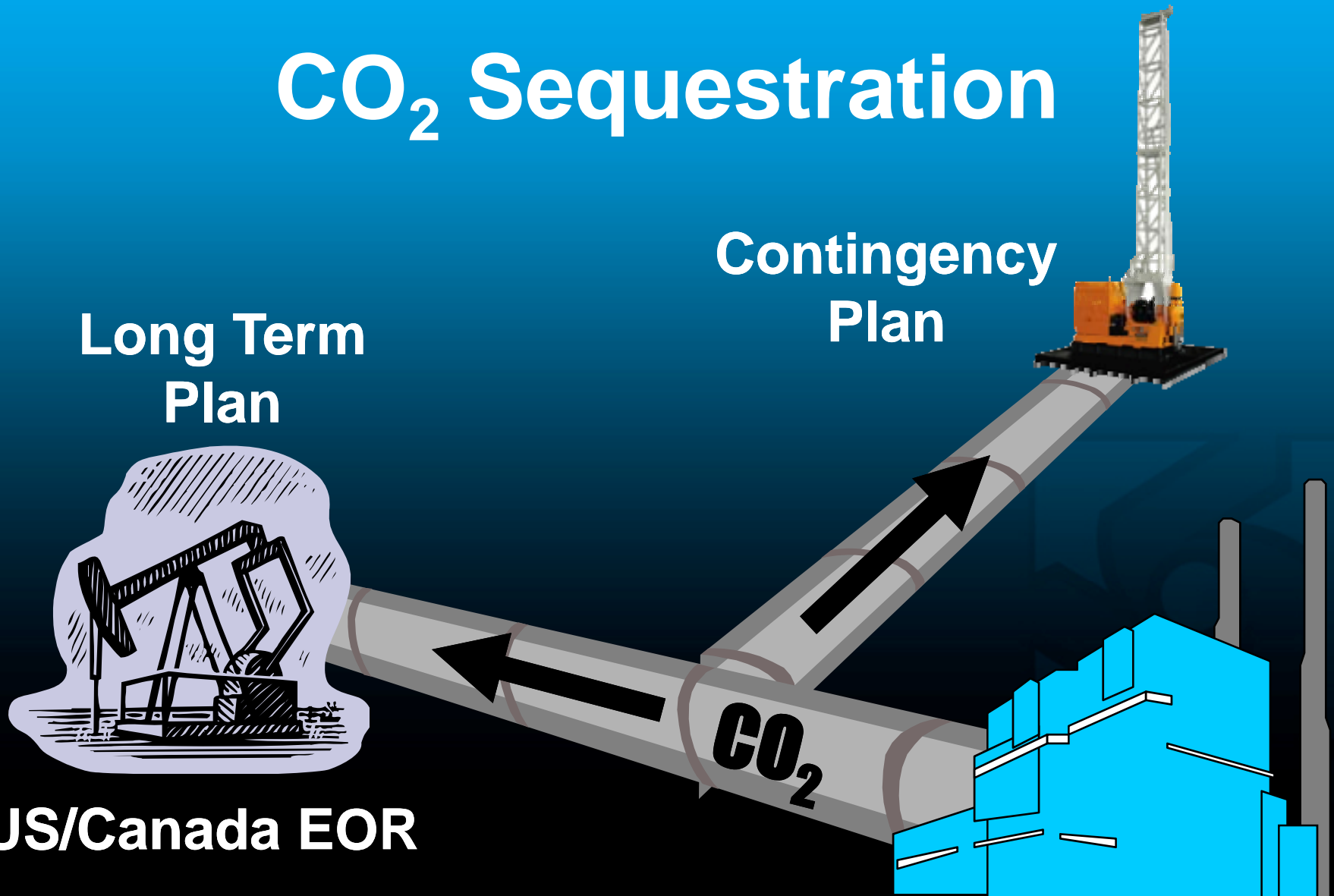
CO₂ Sequestration

Long Term
Plan

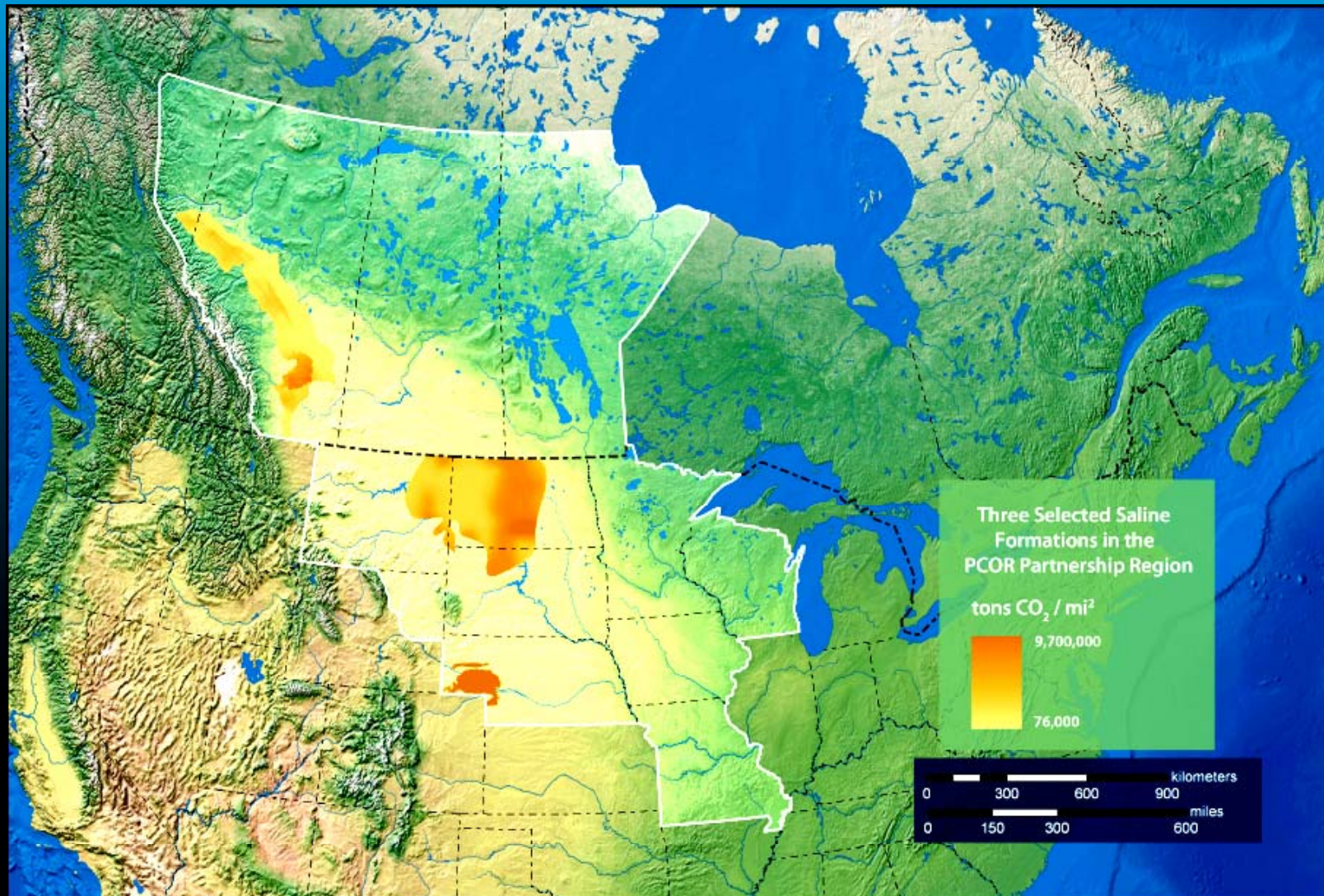
Contingency
Plan

US/Canada EOR

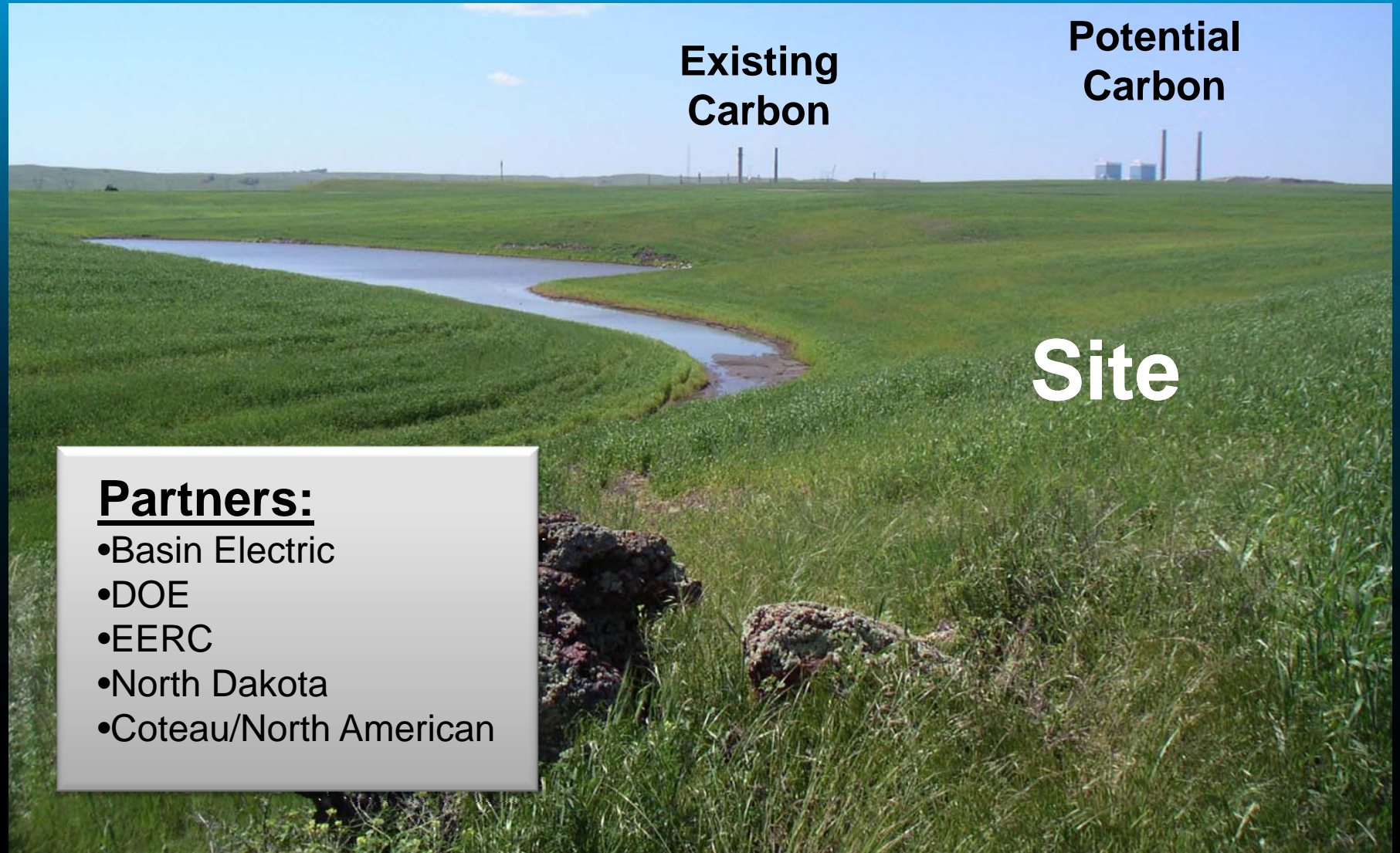
AVS



Saline Sequestration



North Dakota Sequestration Project



**Existing
Carbon**

**Potential
Carbon**

Site

Partners:

- Basin Electric
- DOE
- EERC
- North Dakota
- Coteau/North American

Energy & Environmental Research Center (EERC)



Opportunity:

- Site Characterization
- Site Development
- MVA Operator

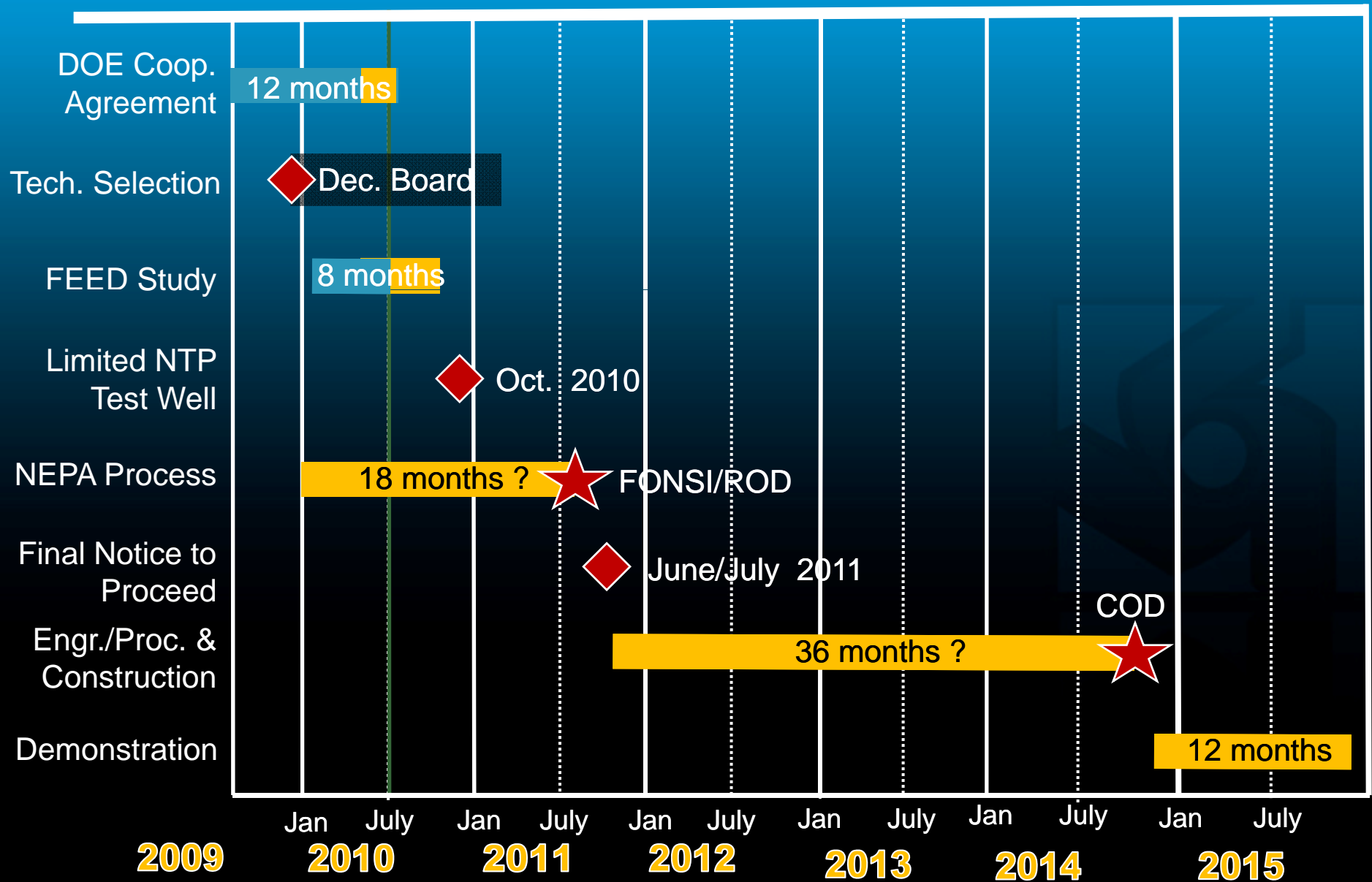
Capture Challenges

- Economics
 - Decrease in Net Generation
 - Expected Capital Cost of \$300 million +
- Technical
 - First of a Kind
 - Steam Requirement
 - Auxiliary Power
 - Water Balance

Sequestration Challenges

- Enhanced Oil Recovery
 - Economic downturn
 - Bakken Drilling
- Saline Sequestration
 - First of a Kind
 - Large Capital Cost
 - Revenue Stream Limited Today (tax credits)
 - Liability

Project Schedule



Next Steps

- FEED Study
 - Financed by BEPC and State of ND
 - \$6.74 million (ND-\$2.7 mm)
 - Sept. 20, 2010 completion
- CO₂ customer challenge
- Saline Formation Injection
- Business Case
 - Management review
 - Board review
- “Go” or “No Go” Decision