



K12 Data Warehouse Automated Reporting

2009 IES SLDS Grant Award (ndSLEDs)
North Dakota Statewide Longitudinal Education Data System

ndSLEDs

- Goals
 - Build a K12 data warehouse
 - Automate the collection of data
 - Reduce burden on districts while increasing reporting requirements
 - Leverage the State investment in PowerSchool
 - Leverage State hosting infrastructure
 - Deliver data to school districts in a timely fashion
 - Daily student enrollment/mobility
 - Cost effective and sustainable

Automated Collection and DW

- Vendor Solution identified
 - OtisEd iMart
 - Utilizes off the shelf MS suite
 - Scheduled extracts from PowerSchool
 - No need to install local software
 - ND requirement (180 districts) in a 3 hour time frame
 - Today approximately 30 minutes total time (30 districts 35,000 students)
 - Most districts are loaded in less than 5 min

Contents

- Data Extracted
 - Student enrollment
 - Course enrollment and Teacher assignment
 - Transcript level data including Student grades
 - School Calendar
 - Attendance
 - Calculate ada/adm

Automated Collection

- 30 pilot districts
- 3 districts have tested Spring Enrollment submissions
 - Ada/Adm was calculated correctly
- Not collected/ not in PowerSchool
 - ELL, Migrant, Homeless, Sped

Future Goals

- Research and evaluation
 - MISO3 teacher assignments and student counts
 - State Student ID Assignment
 - School Calendar
 - Non FTE students: part-time, home school, Alt Ed

PowerSchool and ndSLEDs Alignment

- PowerSchool common data elements
 - State Student ID
 - State Course Codes
 - State Teacher Licensure No
 - Common Exit and Entry Codes
 - Promote attendance categories
 - Calendar Codes

Collections

- Collecting the data
- Validation Reports
 - Districts can review and be alerted daily
 - Beneficial to district as it promotes data quality and accuracy within their own systems
 - Prepares data for formal state submission

Enrollment

- State Dashboard
- District Enrollment Browser

Attendance

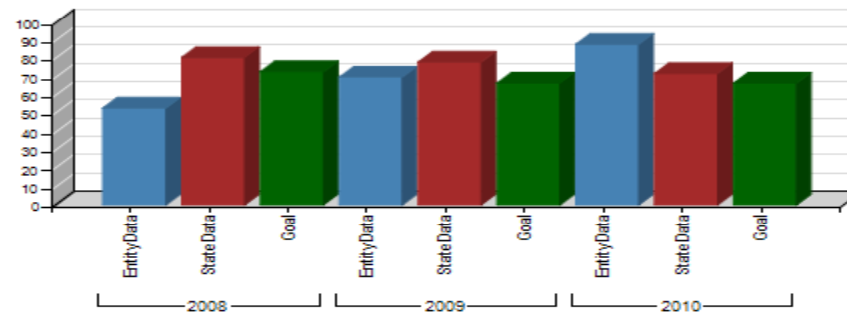
- District Level Statistics
- Student Historical
- Student Details

Assessments

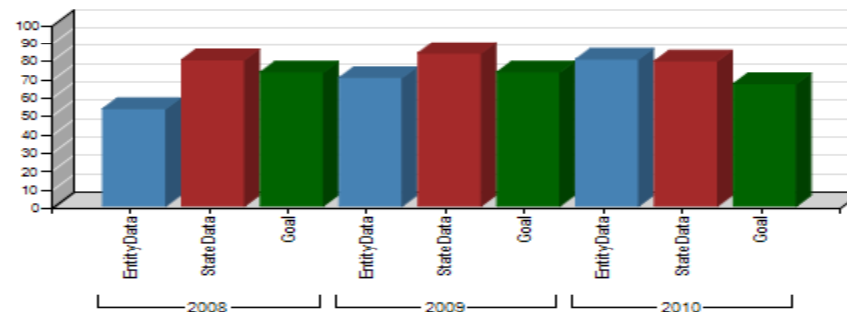
NDSA

- Currently Prototyping

8th Grade Math Trend Data



7th Grade Math Trend Data



Assessments

- ACT and Work Keys
- ELL
- Dibels and mclass
- NWEA MAP/ MAP Primary
- AIMS Web

Student Course Schedules

- [Student Profile \(last year\)](#)
- Student Historical Schedule
- Student Schedule Details

Student Transcript Level

- _Student Historical Course Grade
- Student Course Grade Details



ndSLED & NDIDS

