

Testimony for Long-Term Care Committee

Golden Manor, Inc.
Tuesday September 28, 2010

Chairman Kreidt, members of the Long-Term Care Committee, my name is Paul Bakkum, President of Golden Manor, Inc. I will provide an update on the status of Golden Manor's renovation associated with HB 1327. Since my last Long-Term Care Committee appearance on May 6th, Golden Manor has made significant strides towards the reopening of Golden Manor as a basic care and assisted living facility.

June 2010.

- The Golden Manor board, after completing cash flow studies and floor plan analysis with Helenske Design Group, made the decision to design the facility as a 5 unit Assisted Living and 17 bed Basic Care facility.
- Medcenter confirms the purchase of 10 bed licenses for transfer to Golden Manor for basic care.
- Golden Manor purchases 7 bed licenses for basic care. (Because they are skilled beds, federal regulation does not make them available until October 1 at the earliest for conversion to basic care bed licenses.)
- The lease with Medcenter expired 6-30-2010.

July 2010

- On July 8, 2010 a public meeting was held at Golden Manor in which over 70 interested community members were in attendance including Representative Weisz. The agenda was to update the community with the plan for Golden Manor. This included a review from our architect, Helenske Design Group.

- In mid July Helenske Design Group submitted the architectural renderings to the State Health Department for their approval. We are awaiting a response.

August 2010

- Golden Manor submits an application for Basic Care licensure which includes 160 pages of Policy and Procedures.
- Golden Manor organizes several community volunteer work days to clean the entire facility. Many people ranging from high school to retired community members have volunteered hundreds of hours.

September 2010

- The renovation bid process is completed with bids awarded. The Assisted Living renovation is to begin upon clearance from the Health Department.
- Attached is the floor plan for the Assisted Living and Basic Care units.
- Applications are being accepted for the Manager position. Interviews are to begin in early October.

October 2010

- An auction sale of unneeded furniture and equipment is scheduled for October 9th. Attached is copy of the sale bill.
- Replacing windows and updating resident rooms in basic care wings including painting walls, new window and floor coverings.

Fourth Quarter 2010

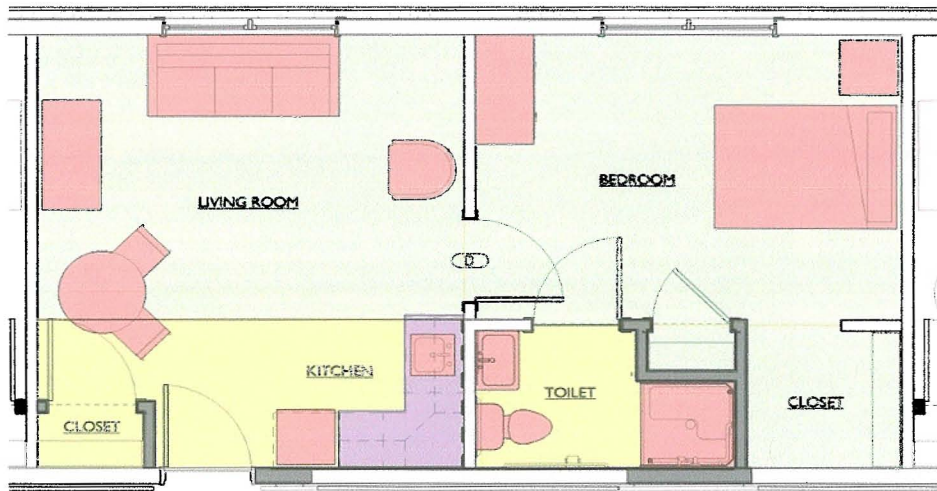
- The goal is to open the Basic Care wings of Golden Manor in the fourth quarter of 2010.

Early 2011

- The Assisted Living renovation phase is estimated to take 6 months to complete after receiving authorization from the Health Department.
- Complete two-step process of application for licensure as assisted living facility.
- Implement rent subsidy pilot project for tenants determined eligible by Kidder County Social Services.

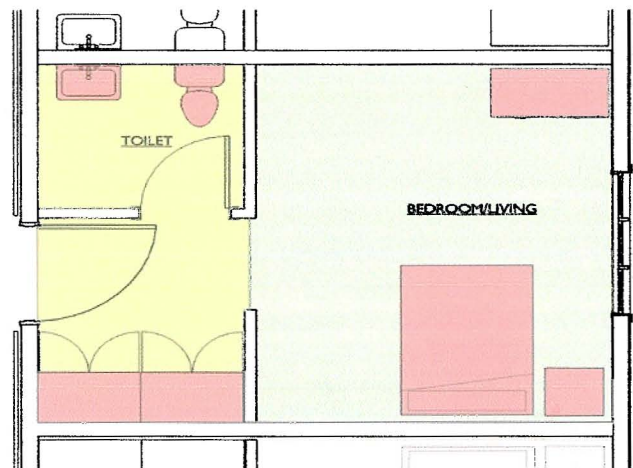
Thank you for your patience as Golden Manor completes the numerous time consuming steps in this process; many outside our control. The Golden Manor board remains committed to utilize the facility to assist the aging population of Steele, Kidder County and surrounding communities.

Golden Manor's consultant Muriel Peterson or myself are available to answer any questions.



1 ASSISTED LIVING UNIT
1/4" = 1'-0"

helenske design group
architecture • construction management



1 BASIC CARE
1/4" = 1'-0"

helenske design group
architecture • construction management

GOLDEN MANOR INVENTORY REDUCTION SALE

214 4th St. NW, Steele, ND - Ph. 701-475-2489

**SAT., OCTOBER 9, 2010
10:00 AM**

VEHICLES

1996 Chevy S-10, extended cab
1989 Ford Econoline 350, 1-Ton with
chair lift, as is

FURNITURE

Power recliner lift chairs
Approx. 25 hospital beds
Approx. 20 Roughrider Industry
dressers
Approx. 28 Roughrider Industry night
stands
Recliners - Couch - Book cases
Side chairs - Occasional chairs
Florescent floor light

OFFICE EQUIPMENT

Approx. 5 desks or more
Computer desk
Several file cabinets
Smith Corona electric typewriter
Swintec electric typewriter
Business multi-line telephones
Office chairs - Printer stand
Floor mats - Telephones

AUCTIONEER'S NOTE

This commercial quality inventory is
the excess from the transition from
the nursing home to a basic care &
assisted living facility.

KITCHEN EQUIPMENT

Stainless steel food preparation tables
Market Forge Convection oven
Litton Commercial grade microwave
Gibson electric stove
2 White kitchen cabinet bases
Dishes - Soup bowls
Metal storage rack
Rolling counter
Serving carts & trays
Stainless steel bake ware & cookware
Restaurant grade dinnerware
Insulated mugs

MISC. ITEMS

8x12' Storage building
Approx. 7'x6' oak & glass aviary
(complete)
Oxygen machines - Oxygen tank
Wheelchairs - Bedside tables
Walkers of all kinds
Toilet risers - Quad canes
Toilet rails - Waste baskets
Room divider curtains
Pillows, blankets, sheets
Pictures & wall hangings
Bulletin boards - Towels
Condensed Reader's Digest books

Lunch will be served • Many More Items too numerous to mention

SALE CONDUCTED BY: *RC Auction*, Steele, ND - Phone 475-4395

Auctioneers: *Ron Christenson*, Lic. #138 • Clerk: *RC Auction Service*, Lic. #318

Not responsible for accidents or theft, **TERMS ARE CASH.**

No property will be removed until settled for. • Some items subject to prior sale
Announcements made sale day take precedence over written ads.

"The Link Between Buyer & Seller"

RC Auction & Clerking