

All Data are from year 2008

Area Name	Population	Total Empl.	Private Sector Empl.	Mining	% Total	% Prvt.
STATEWIDE	641,481	350,442	286,097	6,793	1.9%	2.4%
Williston	12,641	11,704	10,389	2,948	25.2%	28.4%
Dickinson	16,035	11,486	9,647	473	4.1%	4.9%
Minot	35,419	27,046	22,509	174	0.6%	0.8%
Bismarck/Mandan	78,480	57,555	46,611	122	0.2%	0.3%
Bismarck	60,389	49,735	40,041	71	0.1%	0.2%
Mandan	18,091	7,820	6,570	51	0.7%	0.8%
Fargo/West Fargo	117,239	95,907	85,697	***	N/A	N/A
Fargo	93,531	86,749	77,697	***	N/A	N/A
West Fargo	23,708	9,158	8,000	***	N/A	N/A
Grand Forks	51,313	36,476	28,887	***	N/A	N/A
Jamestown	14,630	10,028	8,131	***	N/A	N/A
Wahpeton	7,585	5,740	4,621	***	N/A	N/A
Devils Lake	6,708	5,423	4,119	***	N/A	N/A
Valley City	6,230	4,505	3,721	***	N/A	N/A

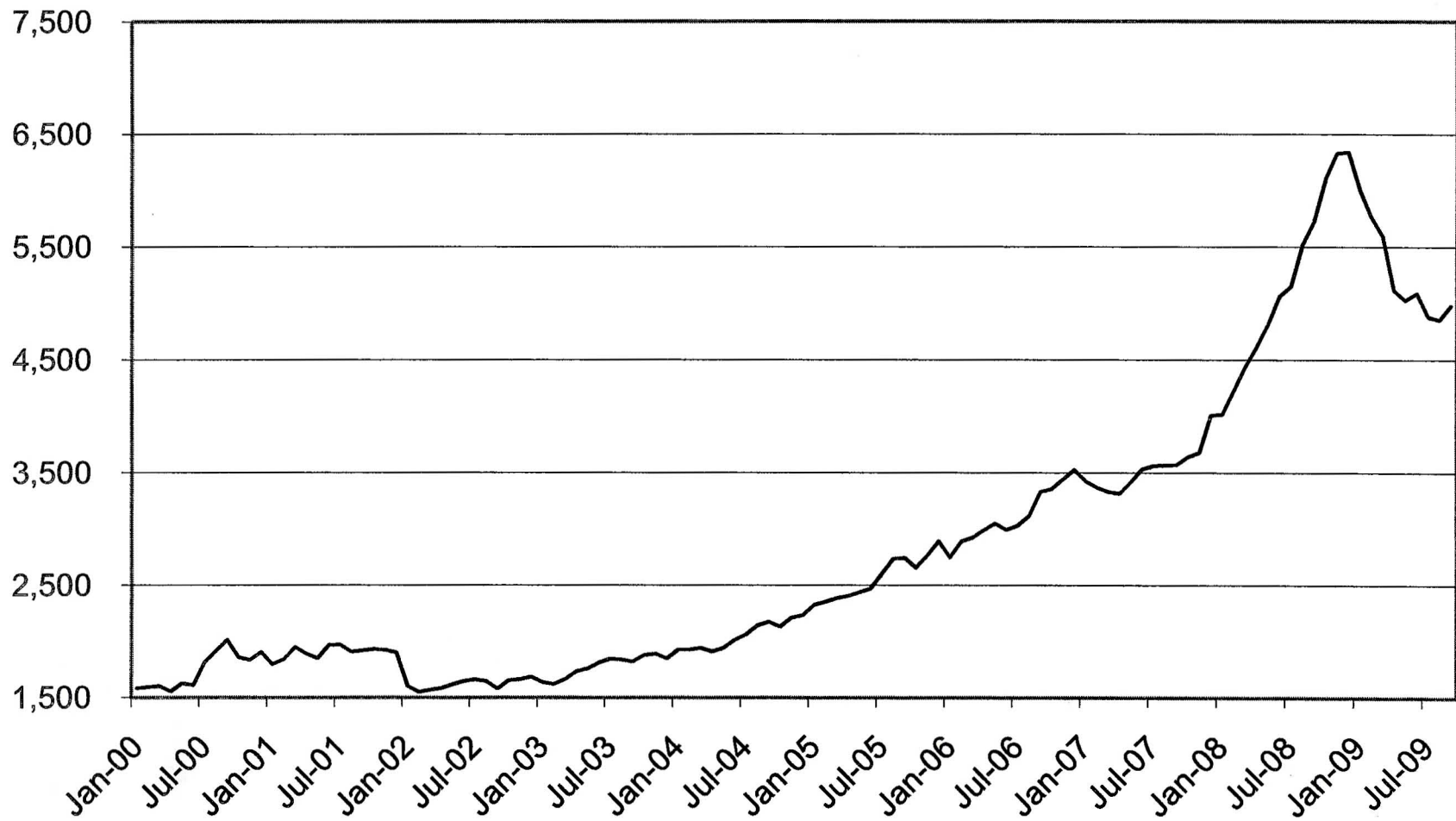
Population: US Census Bureau

Employment: Quarterly Census of Employment & Wages

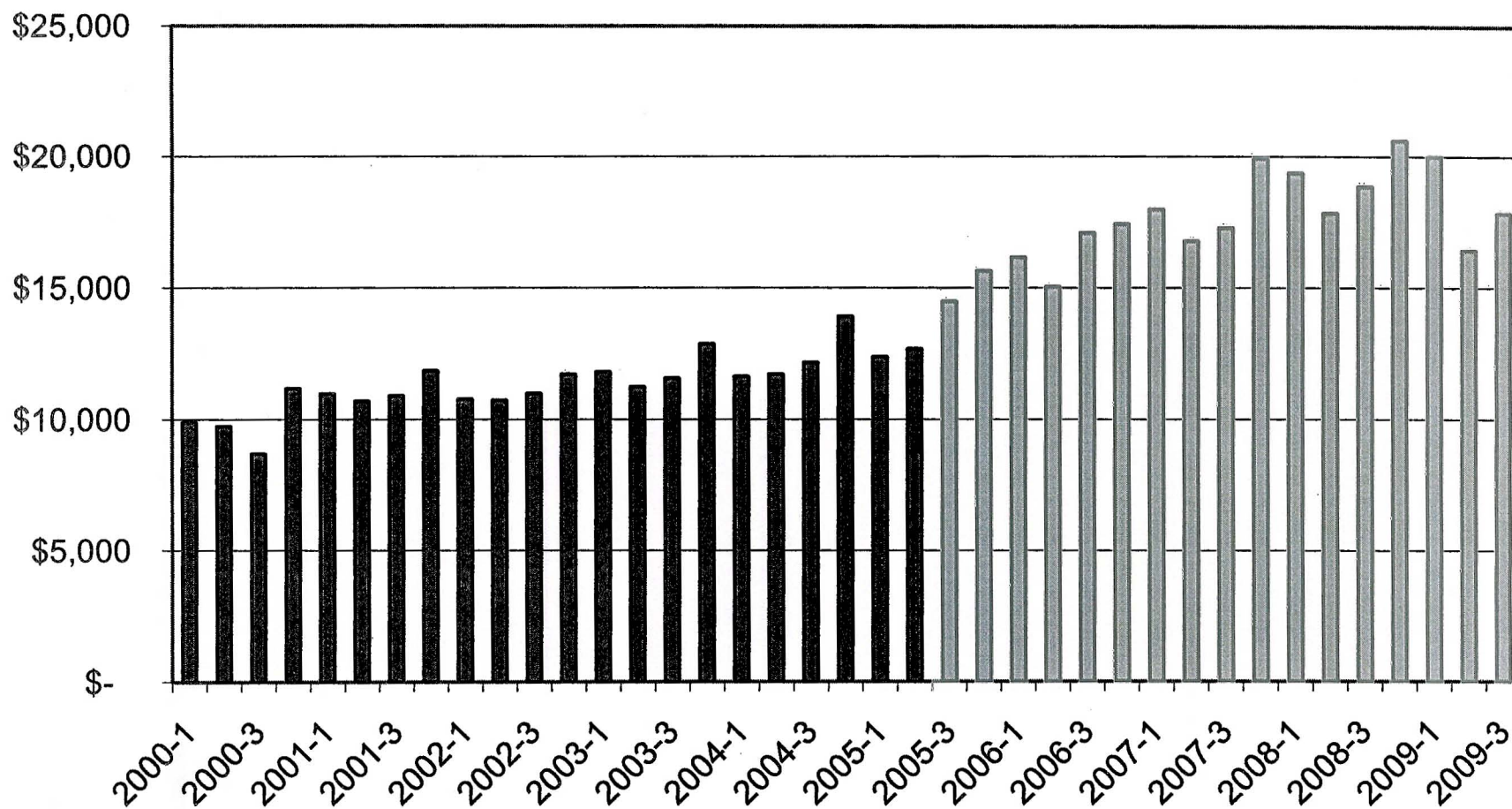
*** Non Disclosable due to confidentiality--negligible employment

Data extracted 2-2-2010

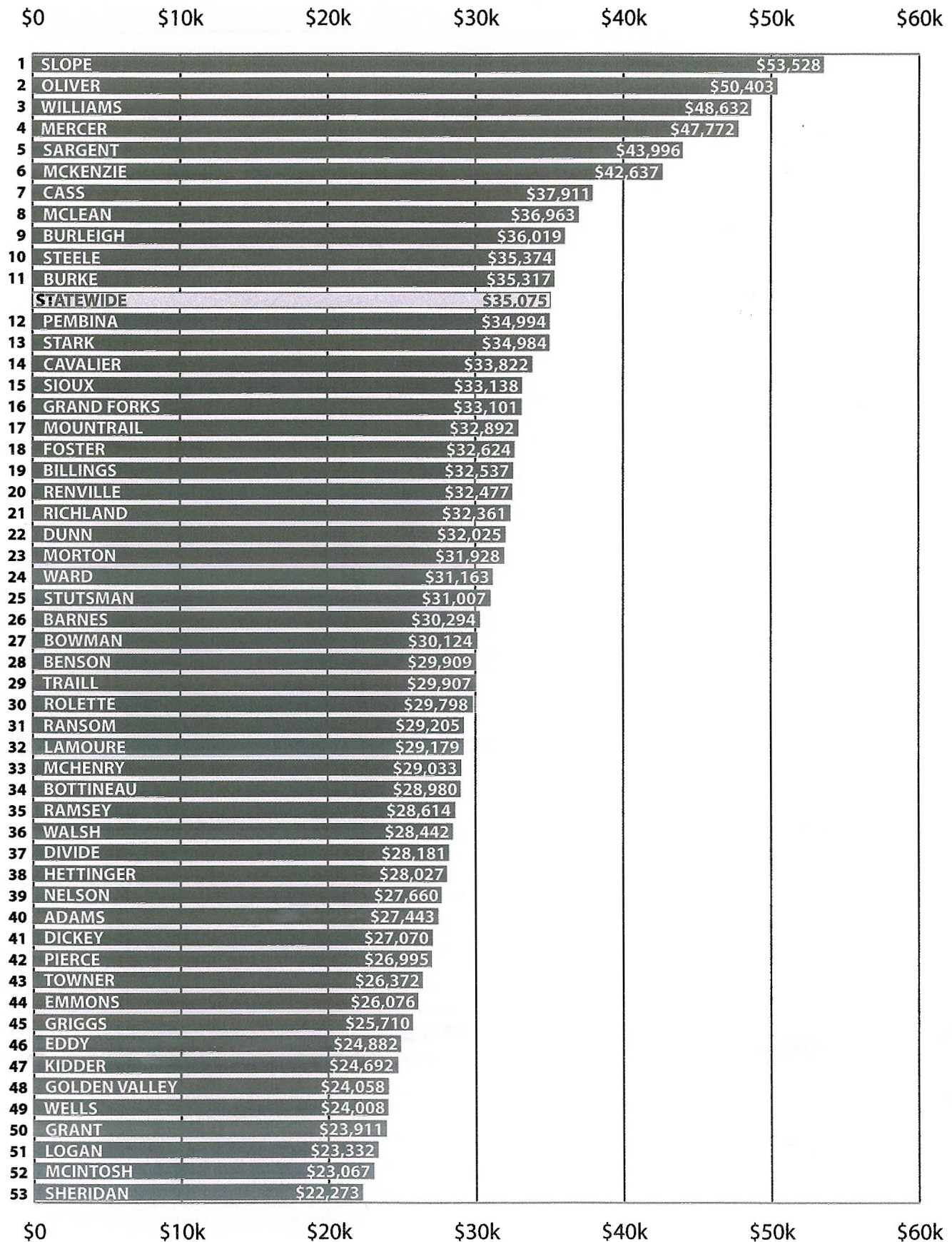
Oil & Gas Employment in ND

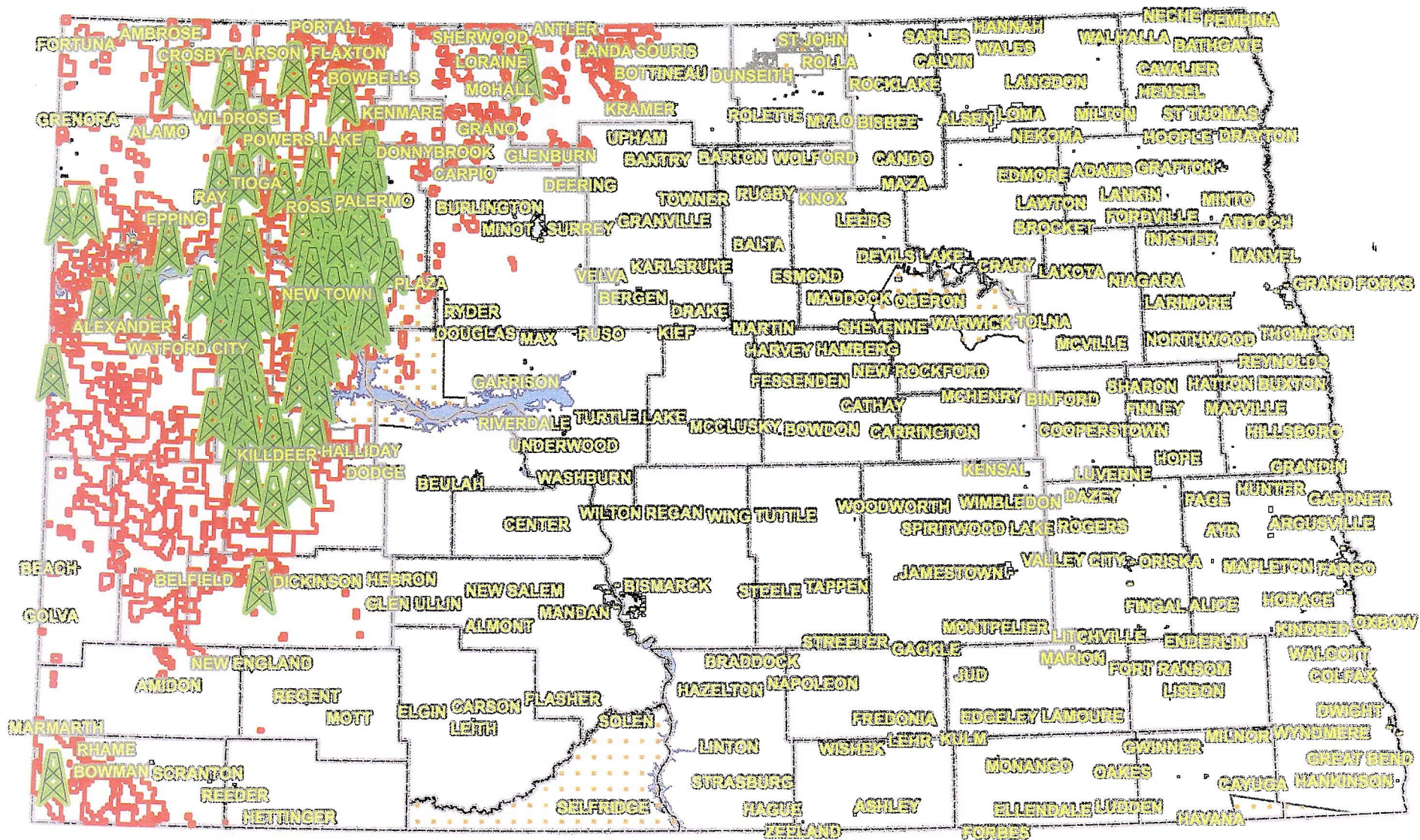


Average Quarterly Wage in Oil & Gas Activity in ND



AVERAGE ANNUAL WAGE BY COUNTY





Disclaimer: Neither the State of North Dakota, nor any agency, officer, or employee of the State of North Dakota warrants the accuracy or reliability of this product and shall not be held responsible for any losses caused by reliance on this product. Portions of the information may be incorrect or out of date. Any person or entity that relies on any information obtained from this product does so at his or her own risk.

0 30 60 120 Miles

Prepared by N.D.I.C.
Oil and Gas Division
DATE : 2/2/2010
Time : 8:30:09 AM

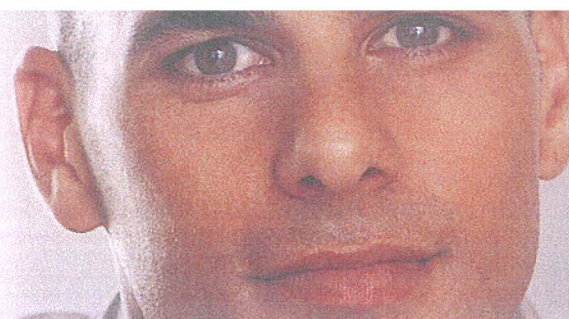


Industry Title	Business Establishments	Average Annual Employment				Total Annual Wages (\$)				Avg Annual Wage (\$)		Change from 2007	
		2008	2007	Change from 2007		2008	2007	Change from 2007		2008	2007	Change from 2007	
				Numeric	Percent			Numeric	Percent			Numeric	Percent
ining, Quarrying, and Oil and Gas Extraction	2	***	***	***	***	***	***	***	***	***	***	***	***
ining, Quarrying, and Oil and Gas Extraction	11	220	167	53	31.7%	12,835,677	8,405,020	4,430,657	52.7%	58,344	50,329	8,015	15.9%
ining, Quarrying, and Oil and Gas Extraction	12	100	94	6	6.4%	6,191,480	5,741,749	449,731	7.8%	61,915	61,082	833	1.4%
ining, Quarrying, and Oil and Gas Extraction	11	70	48	22	45.8%	3,509,301	2,100,996	1,408,305	67.0%	50,133	43,771	6,362	14.5%
ining, Quarrying, and Oil and Gas Extraction	1	***	***	***	***	***	***	***	***	***	***	***	***
ining, Quarrying, and Oil and Gas Extraction	7	***	***	***	***	***	***	***	***	***	***	***	***
ining, Quarrying, and Oil and Gas Extraction	1	***	***	***	***	***	***	***	***	***	***	***	***
ining, Quarrying, and Oil and Gas Extraction	19	445	281	164	58.4%	30,393,224	21,057,353	9,335,871	44.3%	68,299	74,937	-6,638	-8.9%
ining, Quarrying, and Oil and Gas Extraction	1	***	***	***	***	***	***	***	***	***	***	***	***
ining, Quarrying, and Oil and Gas Extraction	12	70	38	32	84.2%	4,919,378	2,530,980	2,388,398	94.4%	70,277	66,605	3,672	5.5%
ining, Quarrying, and Oil and Gas Extraction	9	93	70	23	32.9%	5,467,695	3,242,037	2,225,658	68.6%	58,792	46,315	12,477	26.9%
ining, Quarrying, and Oil and Gas Extraction	2	***	***	***	***	***	***	***	***	***	***	***	***
ining, Quarrying, and Oil and Gas Extraction	34	698	490	208	42.4%	50,566,778	30,877,856	19,688,922	63.8%	72,445	63,016	9,429	15.0%
ining, Quarrying, and Oil and Gas Extraction	24	379	372	7	1.9%	27,483,451	24,757,926	2,725,525	11.0%	72,516	66,554	5,962	9.0%
ining, Quarrying, and Oil and Gas Extraction	94	3,091	2,045	1,046	51.1%	250,198,365	156,455,129	93,743,236	59.9%	80,944	76,506	4,438	5.8%
Oil & Gas Industry in Producing Counties		5,612	3,980	1,632	41.0%	429,408,949	285,093,918	144,315,031	50.6%	76,516	71,632	4,884	6.8%
GRAND TOTAL	47	425	405	20	4.9%	13,828,291	11,685,873	2,142,418	18.3%	32,537	28,854	3,683	12.8%
GRAND TOTAL	315	2,418	2,216	202	9.1%	70,074,145	60,044,687	10,029,458	16.7%	28,980	27,096	1,884	7.0%
GRAND TOTAL	217	1,452	1,454	-2	-0.1%	43,739,648	41,549,939	2,189,709	5.3%	30,124	28,576	1,548	5.4%
GRAND TOTAL	127	627	589	38	6.5%	22,143,817	19,014,170	3,129,647	16.5%	35,317	32,282	3,035	9.4%
GRAND TOTAL	110	607	612	-5	-0.8%	17,105,849	15,048,560	2,057,289	13.7%	28,181	24,589	3,592	14.6%
GRAND TOTAL	128	910	852	58	6.8%	29,142,755	22,671,199	6,471,556	28.5%	32,025	26,609	5,416	20.4%
GRAND TOTAL	97	644	644	0	0.0%	15,493,503	14,538,720	954,783	6.6%	24,058	22,576	1,482	6.6%
GRAND TOTAL	179	1,175	1,186	-11	-0.9%	34,113,487	33,208,043	905,444	2.7%	29,033	28,000	1,033	3.7%
GRAND TOTAL	252	3,118	2,837	281	9.9%	132,941,237	104,060,462	28,880,775	27.8%	42,637	36,680	5,957	16.2%
GRAND TOTAL	366	3,200	3,068	132	4.3%	118,280,141	113,843,442	4,436,699	3.9%	36,963	37,107	-144	-0.4%
GRAND TOTAL	289	2,283	2,217	66	3.0%	75,093,463	63,795,852	11,297,611	17.7%	32,892	28,776	4,116	14.3%
GRAND TOTAL	123	834	819	15	1.8%	27,086,199	23,438,417	3,647,782	15.6%	32,477	28,618	3,859	13.5%
GRAND TOTAL	28	206	157	49	31.2%	11,026,789	7,637,042	3,389,747	44.4%	53,528	48,644	4,884	10.0%
GRAND TOTAL	1,057	12,722	12,199	523	4.3%	445,063,947	380,001,193	65,062,754	17.1%	34,984	31,150	3,834	12.3%
GRAND TOTAL	2,027	28,670	27,919	751	2.7%	893,441,840	822,545,791	70,896,049	8.6%	31,163	29,462	1,701	5.8%
GRAND TOTAL	1,149	12,850	11,209	1,641	14.6%	624,922,038	468,274,959	156,647,079	34.0%	48,632	41,598	7,034	16.9%
Percentage of Covered Employment and Wages in Producing Counties		72,141	68,383	3,758	5.5%	2,573,497,149	2,199,358,349	374,138,800	17.0%	35,673	32,162	3,511	10.9%
Same Counties Without Mining		66,529	64,403	2,126	3.3%	2,144,088,200	1,914,264,431	229,823,769	12.0%	32,228	29,723	2,505	8.4%
Data Total Covered Employment and Wages	27,420	350,442	341,705	8,737	2.6%	12,291,646,661	11,305,537,562	986,109,099	8.7%	35,075	33,086	1,989	6.0%
Excludes Data Without Producing Counties		344,830	337,725	7,105	2.1%	11,862,237,712	11,020,443,644	841,794,068	7.6%	34,400	32,631	1,769	5.4%

Bismarck/Mandan



NORTH DAKOTA AREA PROFILES



COUNTY COMMUNITY CENSUS STATISTICS*

	Bismarck	Mandan		Bismarck	Mandan
Population (2008 U.S. Census Bureau Estimates)	60,389	18,091	Employment Status (Age 16+)		
Median Age	36.5	35.8	Employed	68.1%	68.6%
Total Housing Units	24,217	6,958	Unemployed	2.3%	2.7%
Occupied Housing Units	95.7%	95.5%	Armed Forces	0.2%	0.3%
Education (Age 25+)			Work at Home	3.3%	3.2%
No High School Diploma	12.5%	17.5%	Commuting Time	13.9 min.	18.0 min.
High School Diploma or Equivalency	23.2%	30.4%	Occupation		
Some College, No Degree	23.5%	21.4%	Management, Professional, & Related	36.2%	28.4%
Associate's Degree	11.3%	11.6%	Service	16.5%	17.2%
Bachelor's Degree	21.7%	15.2%	Sales & Office	29.6%	29.4%
Graduate/Professional Degree	7.7%	3.9%	Farming, Fishing, & Forestry	0.3%	0.8%
Income			Construction, Extraction, & Maintenance	7.8%	12.3%
Median Household	\$39,422	\$38,182	Production, Transportation,		
Per Capita	\$20,789	\$17,509	& Material Moving	9.6%	11.9%
Individuals Below Poverty Level	8.4%	10.0%			

*2000 U.S. Census Bureau, except as noted.

Bismarck Taxable In-State Sales	\$1,221,515,989	Mandan Taxable In-State Sales	\$163,145,970
Change in Taxable In-State Sales from 2007	6.59%	Change in Taxable In-State Sales from 2007	-0.32%

2008 North Dakota Tax Department

AVERAGE WAGES

1 Williston	\$49,567
2 Beulah/Hazen	\$47,954
3 Fargo/West Fargo	\$38,078
4 Bismarck/Mandan	\$35,627
Statewide	\$35,075
5 Wahpeton	\$34,038
6 Dickinson	\$33,809
7 Grand Forks/GFAFB	\$33,345
8 Minot/Minot AFB	\$30,917
9 Jamestown	\$30,893
10 Valley City	\$30,101
11 Devils Lake	\$28,616
12 Grafton	\$27,720
13 Rolla	\$23,427

LARGEST EMPLOYERS

1 Medcenter One	Medical and Surgical Hospitals
2 St. Alexius Medical Center	Medical and Surgical Hospitals
3 Bismarck Public Schools	Elementary and Secondary Schools
4 Doosan Infracore International - Bobcat	Construction Machinery Mfg.
5 Nondisclosable	
6 City of Bismarck	Executive and Legislative Offices
7 Aetna	Direct Medical and Health Insurance Carriers
8 Montana-Dakota Utilities	Fossil Fuel Electric Power Generation
9 Mandan Public Schools	Elementary and Secondary Schools
10 N.D. Dept. of Human Services	Individual and Family Services
11 N.D. Dept. of Transportation	Highway, Street, and Bridge Construction
12 Dan's Super Market	Supermarkets and Grocery Stores
13 Basin Electric Power Co-op	Electric Bulk Power Transmission and Control
14 N.D. Dept. of Corrections	Correctional Institutions
15 Medcenter One - Mandan Living Center	Nursing Care Facilities

North Dakota Quarterly Census of Employment and Wages program (QCEW), 2008 Annual Averages



Find additional Labor Market Information publications at: ndworkforceintelligence.com

EMPLOYMENT & WORKSITES

TOP EMPLOYING INDUSTRIES

- ▶ Health Care & Social Assistance 16.4%
- ▶ Retail Trade 13.6%
- ▶ State Government 9.0%
- ▶ Accommodation & Food Services 8.9%
- ▶ Remaining Industries 52.1%

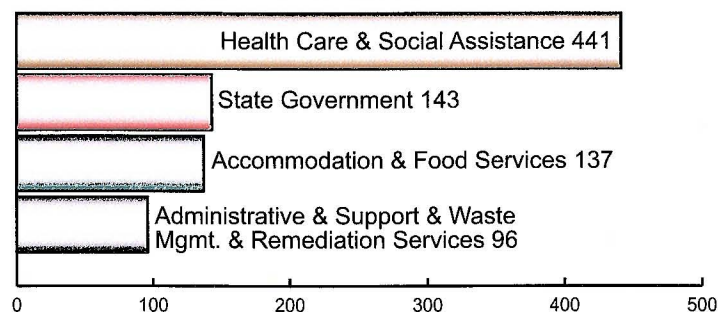


TOTAL WORKSITES

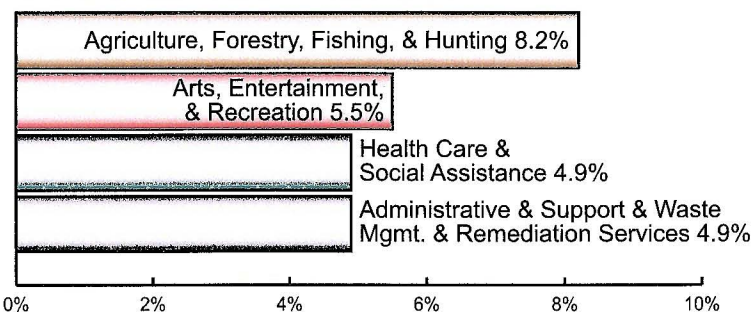
- ▶ Construction 13.3%
- ▶ Retail Trade 12.5%
- ▶ Professional, Scientific, & Technical Services 11.1%
- ▶ Other Services (Except Public Administration) 9.3%
- ▶ Remaining Industries 53.8%



LARGEST EMPLOYMENT GROWTH



FASTEST EMPLOYMENT GROWTH



HIGHLIGHTS

- Health Care and Social Assistance continued to be the top employing industry with 9,460 employees, accounting for 16.4% of total jobs in the area. This industry also showed the largest employment growth with the addition of 441 new positions and was the leader in total wages, accounting for 19.0% of the area.
- Construction had the largest share of total worksites in the Bismarck-Mandan area with 13.3%, followed closely by Retail Trade with 12.5%.
- Agriculture, Forestry, Fishing, and Hunting led all industries in fastest employment growth with an increase of 8.2%.
- Utilities was the highest paying industry with \$84,954 for an average annual wage. It also had the largest average annual wage growth with an increase of \$3,648.
- Arts, Entertainment, and Recreation had the fastest average annual wage growth with a 6.1% increase.

INDUSTRY

***Indicates data have been suppressed due to confidentiality restrictions.

Private

Agriculture, Forestry, Fishing, & Hunting
 Mining
 Utilities
 Construction
 Manufacturing
 Wholesale Trade
 Retail Trade
 Transportation & Warehousing
 Information
 Finance & Insurance
 Real Estate & Rental & Leasing
 Professional, Scientific, & Technical Services
 Management of Companies & Enterprises
 Administrative & Support & Waste Management & Remediation Services
 Educational Services (Private)
 Health Care & Social Assistance
 Arts, Entertainment, & Recreation
 Accommodation & Food Services
 Other Services (Except Public Administration)

Government

Federal Government
 State Government
 Local Government

Total (Totals do not add up due to suppression of confidential data.)

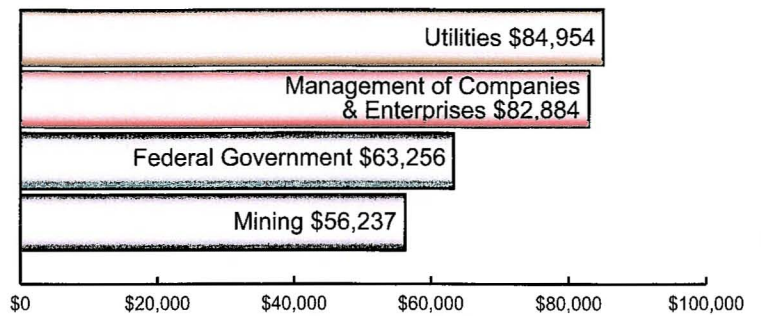
ANNUAL AVERAGE WAGES

TOTAL WAGES

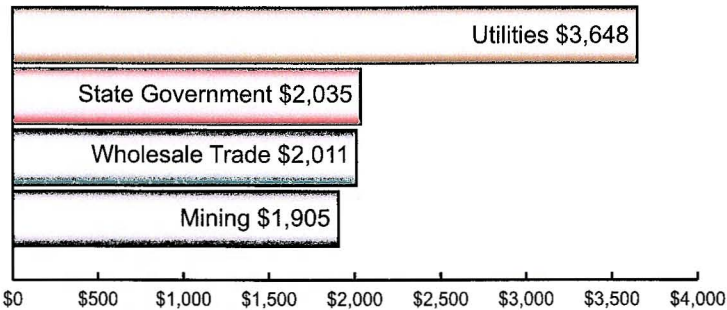
- Health Care & Social Assistance 19.0%
- State Government 10.1%
- Retail Trade 9.2%
- Local Government 7.0%
- Remaining Industries 54.7%



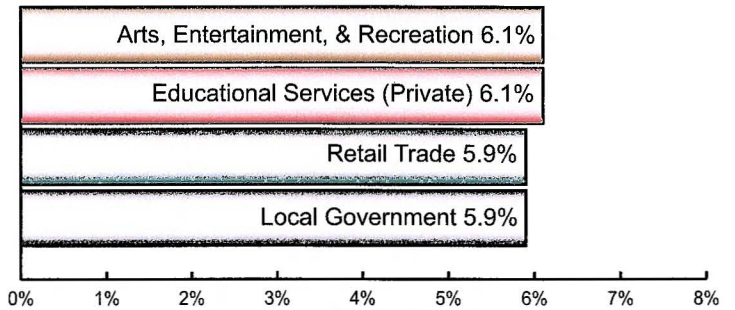
HIGHEST AVERAGE WAGE



LARGEST AVERAGE WAGE GROWTH



FASTEST AVERAGE WAGE GROWTH



2008 ANNUAL AVG. EMP.	2007 ANNUAL AVG. EMP.	% CHG.	2008 WORK-SITES	2007 WORK-SITES	% CHG.	2008 ANNUAL AVG. WAGE	2007 ANNUAL AVG. WAGE	% CHG.	2008 TOTAL WAGES
79	73	8.2%	8	7	14.3%	\$21,125	\$20,619	2.5%	\$1,668,894
111	122	-9.0%	12	11	9.1%	\$56,237	\$54,332	3.5%	\$6,242,284
238	232	2.6%	12	10	20.0%	\$84,954	\$81,306	4.5%	\$20,219,080
3,486	3,435	1.5%	521	503	3.6%	\$39,051	\$37,370	4.5%	\$136,133,359
2,614	2,694	-3.0%	110	115	-4.3%	\$46,981	\$45,916	2.3%	\$122,808,631
2,225	2,132	4.4%	315	307	2.6%	\$48,549	\$46,538	4.3%	\$108,022,124
7,830	7,941	-1.4%	490	492	-0.4%	\$24,090	\$22,738	5.9%	\$188,624,683
1,401	1,347	4.0%	145	141	2.8%	\$35,385	\$34,774	1.8%	\$49,573,915
1,043	1,135	-8.1%	63	65	-3.1%	\$38,987	\$37,739	3.3%	\$40,663,527
2,630	2,561	2.7%	281	275	2.2%	\$44,423	\$43,083	3.1%	\$116,832,868
463	462	0.2%	139	135	3.0%	\$23,870	\$22,870	4.4%	\$11,051,898
2,905	2,829	2.7%	435	410	6.1%	\$43,153	\$42,728	1.0%	\$125,358,510
1,329	1,330	-0.1%	30	28	7.1%	\$82,884	\$85,081	-2.6%	\$110,152,656
2,075	1,979	4.9%	229	233	-1.7%	\$22,287	\$22,813	-2.3%	\$46,245,565
639	628	1.8%	25	28	-10.7%	\$29,137	\$27,459	6.1%	\$18,618,537
9,460	9,019	4.9%	291	276	5.4%	\$41,278	\$39,402	4.8%	\$390,485,171
518	491	5.5%	45	39	15.4%	\$14,704	\$13,856	6.1%	\$7,616,829
5,113	4,976	2.8%	229	213	7.5%	\$13,003	\$12,367	5.1%	\$66,486,894
2,452	2,371	3.4%	365	359	1.7%	\$23,758	\$23,177	2.5%	\$58,255,782
1,179	1,180	-0.1%	52	52	0.0%	\$63,256	\$62,243	1.6%	\$74,579,072
5,199	5,056	2.8%	86	84	2.4%	\$39,692	\$37,657	5.4%	\$206,358,007
4,566	4,527	0.9%	28	29	-3.4%	\$31,636	\$29,884	5.9%	\$144,451,742
57,553	56,519	1.8%	3,911	3,812	2.6%	\$35,627	\$34,389	3.6%	\$2,050,450,028

North Dakota Quarterly Census of Employment and Wages program (QCEW)



Find additional Labor Market Information publications at: ndworkforceintelligence.com

NORTH DAKOTA AREA PROFILES

Bismarck/Mandan

November 2009

*A publication prepared by the North
Dakota Labor Market Information Center*

Telephone

LOCAL: 701-328-2868
TOLL FREE: 800-732-9787
TTY: 800-366-6888

Fax

LOCAL: 701-328-4193

E-mail

ndwin@nd.gov

Internet

jobsnd.com or ndworkforceintelligence.com

OFFICIAL BUSINESS

PENALTY FOR PRIVATE USE: \$300

Job Service North Dakota is an equal opportunity employer/ program provider. Auxiliary aids and services are available upon request to individuals with disabilities.

Governor

John Hoeven

Executive Director

Maren L. Daley

Labor Market Information Center

Customer Service Area Director

Beth Zander

Labor Market Information Manager

Duane Broschat

Product Development & Outreach Supervisor

Marcia Slag

BLS Program Supervisor

Michael Ziesch

Research Analysts

Mark Backman, Virginia Frank, Sharon Jans

Publication Coordinator & Graphic/Web Designer

Susan Simonson



LABOR MARKET INFORMATION CENTER

1000 EAST DIVIDE AVENUE

PO BOX 5507

BISMARCK, ND 58506-5507

RETURN SERVICE REQUESTED

PRSRT STD
U.S. POSTAGE
PAID
BISMARCK, ND
PERMIT NO. 104

Bismarck/ Mandan

RECENTLY RELEASED LMI PUBLICATIONS

North Dakota Workforce Review

North Dakota Workforce Review provides labor market information for the regions and counties within North Dakota, as well as a statewide overview.

North Dakota Employment and Wages

North Dakota Employment and Wages is updated annually and is the most accurate source for detailed industrial employment and wage information for the state, its regions, and counties.

Wages for North Dakota Jobs

Wages for North Dakota Jobs is an annual reference guide providing hourly and annual wage and employment data for most occupations in the state, its metro areas and balance-of-state regions.



Find additional Labor Market Information publications at: ndworkforceintelligence.com