

**Commission on Alternatives to Incarceration**  
**Representative Lisa Wolf, Chairman**  
**March 24, 2010**

-----

Robyn Schmalenberger, Director for Transitional Facilities  
Department of Corrections and Rehabilitation  
Division of Adult Services

---

**I) Introduction:**

The North Dakota Department of Corrections and Rehabilitation utilizes transitional facilities as a front-end alternative to incarceration and as a graduated release system for individuals being discharged from prison. They give parole and probation officers options in responding to violations from community offenders; and they assist in maintaining continuity between the offender's reentry plan developed in prison, and the offender's community reentry plan. Proactive supervision and release planning, inclusive of research supported principles and interventions, are fundamental offender management practices. Evidence-based practices indicate lower risk offenders have improved outcomes if they are diverted to a less restrictive environment; and higher risk offenders have improved outcomes if they are released through a graduated, step-down system.

Transitional facilities offer a structured living environment in which assessments, services, and programs designed to identify and intervene on criminogenic risk and needs are provided. Examples of these services include chemical dependency treatment, cognitive/behavioral programming, conflict resolution, parenting, budgeting, employment skills, and gender-responsive services for female offenders.

In addition to the services and programs offered at the transitional facilities, offenders are afforded opportunities to participate in community activities such as full-time employment, educational programs, community programs, and family reintegration that would otherwise not be available in confinement. These opportunities allow offenders to obtain legitimate means of supporting themselves and they provide social incentives for crime-free behavior.

**II) Current use of Transitional Facilities:**

Transitional Facilities are comprised of the following:

A) Missouri River Correctional Center (MRCC)

- \*Serves minimum custody male prison inmates

- \*DOCR facility

Chemical dependency treatment

Work and education release

Automotive technology course

Welding - metal shop

B) Tompkins Rehabilitation and Correctional Center (TRCC)

- \*Serves probationers, parolees, and prison inmates

- \*Collaborative relationship with the State Hospital

Staffed by both DOCR and State Hospital employees

Provides treatment services to assist chemically dependant individuals in achieving sobriety

***Contract Facilities***

C) Bismarck Transition Centre (BTC)

- \* 501-c(3) Not-for-Profit Corporation

- \*Serves probationers, parolees, and prison inmates

D) Centre Inc. (Mandan and Fargo)

- \* 501-c(3) Not-for-Profit Corporation

- \*Serves probationers, parolees, and prison inmates

Female Inmate Transition Program (FTP) Mandan and Fargo

Male Inmate Transition Program (MTP) Fargo

E) Heart of America Correctional and Treatment Center

- \* Owned by Rugby Job Development Authority and leased to Pierce County

- \*Serves male prison inmates

- \*Jail-based chemical dependency treatment program

**III) Effectiveness:**

The DOCR is now using nationally accepted definitions and counting rules for measuring recidivism which were developed by Association of State Correctional Administrators (ASCA). It is called Performance Based Measurement System (PBMS). We essentially look at eligible cohorts discharged from inmate status during the calendar year for a period of three years and determine if they returned to our prison system for a new crime or for technical violations only.

2005 is the most recent year for which we have the full three year recidivism tracking on the entire cohort group. 2006 will be available in spring 2010. For 2005 inmates returned at 15.6% for new crimes and 25.1% for technical violations only.

We have compared inmates who were terminated from the TRCC and BTC with the general population. The TRCC and BTC participation must have been associated with the 2005 discharge from inmate status. Although we might expect higher return rates for inmates who were sent through TRCC or BTC because of higher risk associated with these groups, they were about one to two percent lower for technical violations. New crime returns for TRCC participants were actually 3.5% lower than the general population.

#### **IV) Future needs:**

##### **Seriously Mentally Ill.**

The DOCR has identified approximately 45% of the inmate population as having a diagnosed mental health problem. Most of these are not severe and can be managed, but it is the most seriously mentally ill, approximately 10% of the inmate population, that must overcome greater challenges as they transition back to their communities. Due to the complexity of their issues, the seriously mentally ill (SMI) population may not be appropriate for placement in a traditional transitional facility. This population also has the added challenge of obtaining necessary medications with little financial resources.

To address this issue the DOCR partnered with the Department of Human Services and in July 2008 implemented the Release and Integration program. Uniform practices have been developed regarding the release of inmates that meet the definition of a SMI inmate. The practices are inclusive of a treatment plan and continuum of care in the community. The Release and Integration committee meets on a monthly basis to review cases schedule to be released from prison. The Release and Integration program has improved continuity of services for the SMI population, but sustainable housing continues to be a challenge.

##### **Offenders sentenced under 12.1-32-09.1 of the North Dakota Century Code -Sentencing of Violent Offenders (85%).**

These offenders are not eligible for release from confinement on any basis until eighty-five percent of the sentence imposed by the court has been

served. They are not eligible for parole and current transitional opportunities for these offenders are limited. They may reside at MRCC, but they are not eligible to participate in work or education release. They are not eligible for placement in community transition facilities such as BTC, Centre Inc., and TRCC. Evidence-based practices indicate that after participating in risk reduction programming during incarceration, long-term outcomes could be enhanced if transitional opportunities were available for inmates included in this population.

### **Sex Offenders**

Several of the existing transitional facilities and homeless shelters will accept low and some moderate risk sex offenders. Obtaining housing for high or moderate risk sex offenders is difficult. Lack of housing is not focused on one locality, but throughout the state of North Dakota. Stability is one of the most important factors for recidivism reduction, and without a home sex offenders are at a higher risk to re-offend.

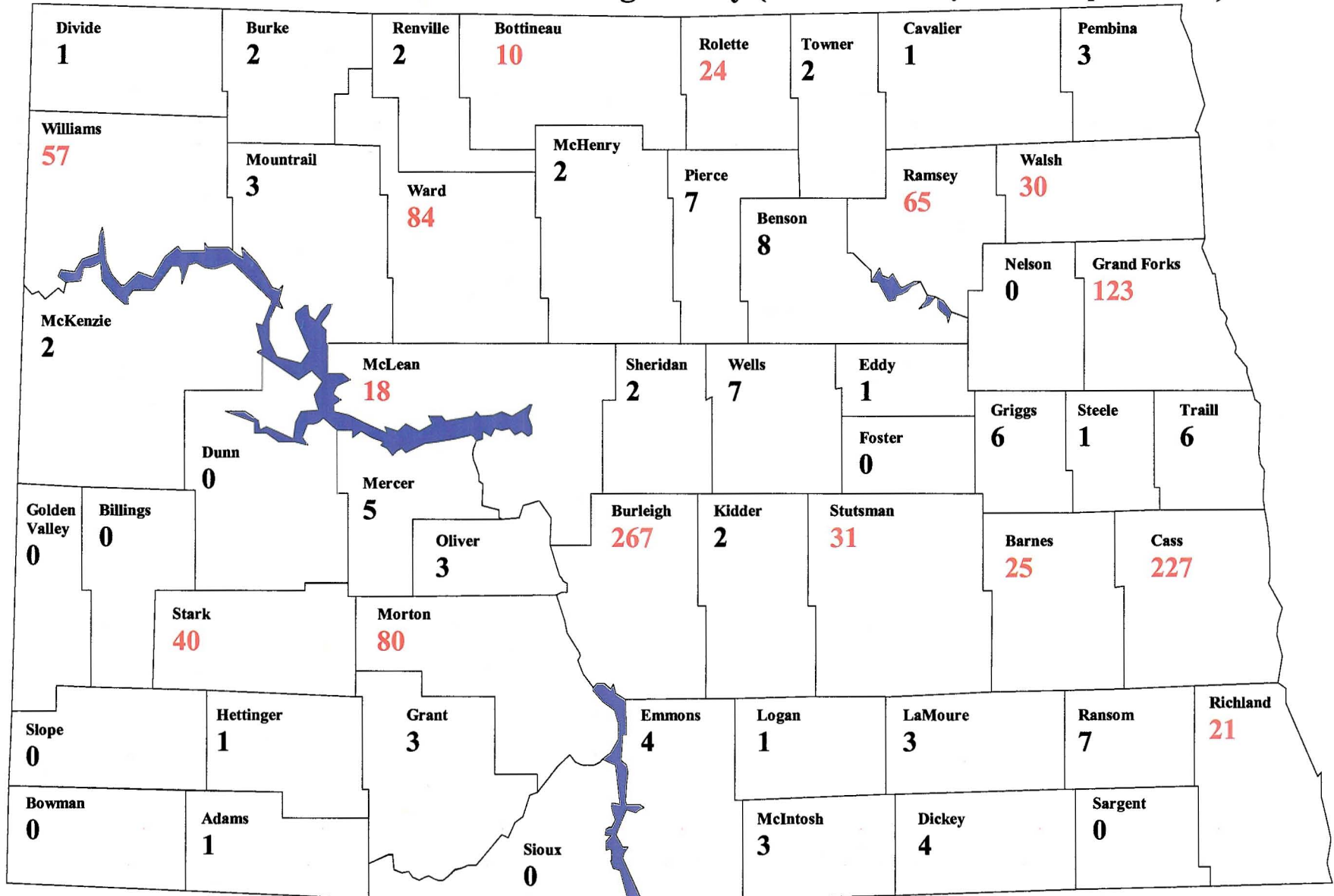
To alleviate some of the homeless sex offender problems in Bismarck, the ND DOCR placed a trailer on the grounds of the North Dakota State Penitentiary. This has assisted in addressing the problem in Bismarck, but there continues to be a lack of housing for sex offenders in other areas of North Dakota. The DOCR is further evaluating the practices for the discharge of sex offenders to close gaps in coordinating efforts with the community.

### **V) Conclusion**

With the focus on using nationally recognized definitions to measure recidivism and the focus on evidence-based interventions, transitional services will continue to evolve and improve. The Transition from Prison to the Community Initiative (TPCI) has allowed the DOCR and community partners to concentrate on a philosophy of risk reduction strategies demonstrated to intervene on criminogenic risk and needs. These efforts are assisting in improving public safety and encouraging more successful offender outcomes.



## 2008 ND DOCR Releases – Sentencing County (One Offender May Have Multiple Counties)





**The North Dakota Department Of Corrections And Rehabilitation is a participant in the Transition From Prison To Community Initiative (TPCI). Success in transitioning offenders back into a community environment and helping offenders who are already in the community is not possible without the active help of dedicated partners. The department has established relationships with a variety of transitional facilities, as well as enhancing the Missouri River Correctional Center's role as an effective transition center to improve the offender's opportunity for success.**

**This brochure provides a brief description of some of the partners who help provide needed services for offenders.**

**Leann K. Bertsch  
Director**

**Department Of Corrections and Rehabilitation**



# **Tompkins Rehabilitation And Corrections Center (TRCC)**



The Tompkins Rehabilitation and Corrections Center (TRCC) is a Department of Corrections and Rehabilitation funded program at the North Dakota State Hospital. Its 90 beds are organized on three wards that house 60 male and 30 female offenders.

## **THE RESIDENT POPULATION**

The Resident population of TRCC consists of adult men and women (18 years or older). The Department of Corrections and Rehabilitation (DOCR) refers residents as part of the contracted programs.

The typical TRCC resident has a DSM-IV diagnosis of alcohol or other drug dependence and meets the DOCR and State Hospital criteria for the corrections programs as follows:

1. Legal charges related to substance abuse.
2. Offenders with a violent history are occasionally waived into the program.
3. Medically and psychiatrically stable.

### **TRCC - RESIDENTIAL REHABILITATION, INTENSIVE OUTPATIENT (male)**

Established in July 1999 with a contract from the Department of Corrections and Rehabilitation, TRCC is specifically designed to treat an offender population referred by the Department of Corrections and Rehabilitation. In 2000, the Corrections Rehabilitation and Recovery Program (CRRP) began to treat a multiple DUI population. The treatment combines the use of a Therapeutic Community approach with addiction treatment, cognitive restructuring and various skills approaches to modify both addiction and criminal thinking/behavior.

The purpose is to provide intensive treatment for male adult residents with a chemical dependency diagnosis who have had a criminal history including offenses related to substance abuse.

The two male wards house programs for up to 60 men. The programs consist of diagnosis, evaluation, and treatment planning. Family involvement, group and individual therapy, cognitive restructuring, education, A.A. meetings, therapeutic recreation therapy, and structured social environment therapy are all utilized. Interdisciplinary involvement, multiple treatment modalities and aftercare planning are all integral to the treatment program. The living space and treatment programs are separate from the other TRCC and Behavioral Health programs.

Specialized programs, such as specific skills based approaches are available, as well as involvement from the DOCR case manager.

A solid foundation for discharge placement and aftercare is based on community placement criteria as determined by the DOCR. Appointments for aftercare are completed for every resident prior to discharge.

### **TRCC - RESIDENTIAL REHABILITATION, INTENSIVE OUTPATIENT (female)**

Established in July 2003 with a contract from the Department of Corrections and Rehabilitation, Treatment Addiction Services and Corrections (TASC) is specifically designed to treat an offender population referred by the Department of Corrections and Rehabilitation. Treatment combines the use of a Therapeutic Community approach with addiction treatment, cognitive restructuring and various skills approaches to modify both addiction and criminal thinking/behavior.

The purpose is to provide intensive treatment for female adult Residents suffering from chemical dependency who have had a criminal history including offenses related to substance abuse.

The female ward located in the New Horizons Building houses this 30-bed program. The programs consist of diagnosis, evaluation, and treatment planning. Family involvement, group and individual therapy, cognitive restructuring, education, A.A. meetings, therapeutic recreation therapy, therapeutic community and milieu therapy are all utilized. Interdisciplinary involvement, multiple treatment modalities and aftercare planning are all integral to the treatment program. The living space and treatment programs are separate from the other TRCC

and Secure programs, to include civilly committed sex offenders. Specialized programs are available, such as specific skills based approaches, as well as involvement from the DOCR case manager.

A solid foundation for discharge placement and aftercare is based on community placement criteria as determined by the DOCR. Appointments for aftercare are completed for every resident prior to discharge.

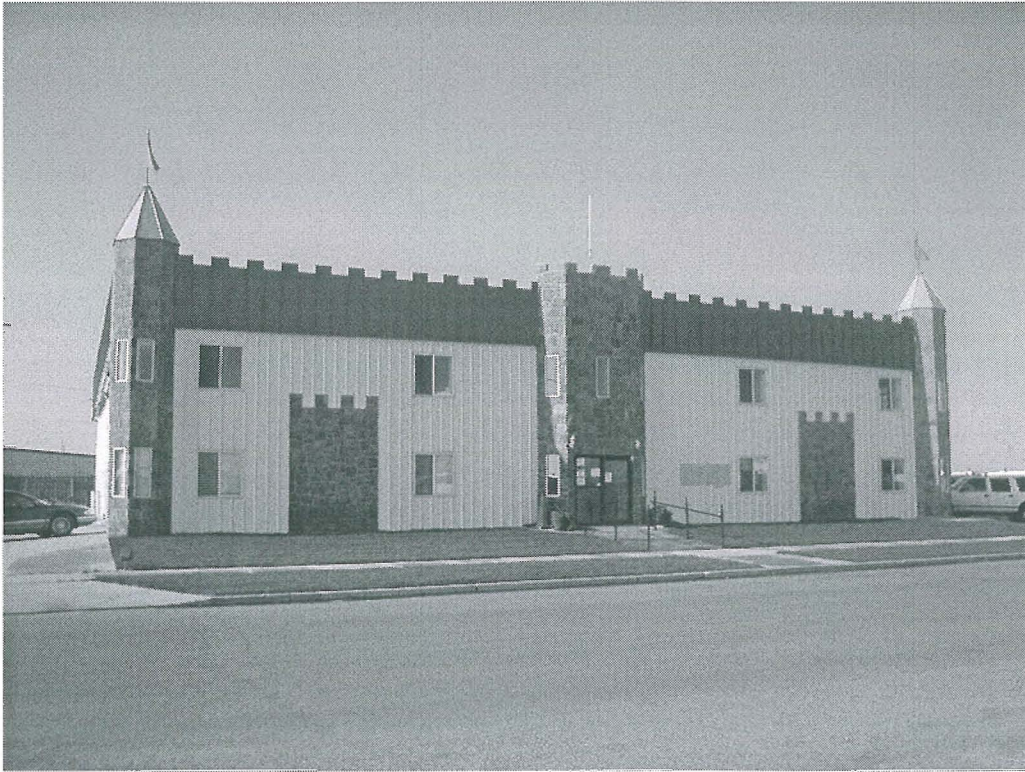
### **TREATMENT PROGRAMMING**

Each of the TRCC wards operates a unique program with its own clinical team. Programs are specifically designed and implemented based on therapeutic value for the population served. This is determined by following best practice standards for addicted offender populations and through assessment of the resident prior to and during the treatment process. Multiple disciplinary teams are made up from a selection of occupational therapists, recreational therapists, nursing staff, addiction counselors, DOCR case managers and vocational rehabilitation counselors who all provide direct care as well as team participation and consultation. Dietary, chaplaincy, psychiatry, audiometric, and specialized therapies are available on a consultant basis.

On July 31, 2009 the Department had 81 (51 males/30 females) offenders placed at this facility.



# Bismarck Transition Center (BTC)



Administrator: Marcie Conmy-Fisher  
Deputy: Dan Wrolstad  
Address: 2001 Lee Ave  
Bismarck, ND 58504  
Phone: 701-222-3440  
Fax: 701-222-3599  
Website Address: [cccscorp.com](http://cccscorp.com)  
Visiting Hours: Sat/Sun 1pm to 4pm  
Security: Minimum  
Beds: 162 (156 male and 6 female)

## **MISSION**

Bismarck Transition Center is a professional team of individuals who promote public safety, preserve the rights of victims, fulfill the mandates of the criminal justice system, and address the individual needs of adults.

## **HISTORY**

Community, Counseling, and Correctional Services, Inc. (CCCS) in partnership with the North Dakota Department of Corrections and Rehabilitation opened BTC in August 2002 with 60 beds. The facility was renovated by a group of private investors and is leased to CCCS on a long-term basis. BTC was expanded in 2006 to include 102 more beds bringing the total to 162. BTC is the only community based correctional facility in North Dakota that is accredited by the American Correctional Association.

## **PROGRAM OBJECTIVES:**

Correctional programming and treatment staff have established the following objectives to enable BTC to best achieve program goals:

- Provide residents with a primary counselor responsible for development and constant assessment of an individualized treatment and correctional programming plan;
- Provide designated residents with at least 8 hours of group therapy weekly;
- Provide residents with at least 1 hour of individual counseling weekly;
- Provide residents with continuing cognitive restructuring classes to supplement those they participated in while incarcerated;
- Provide access to weekly self support group meetings;
- Provide a balance of other programming, such as anger management, parenting, female specific programming, Native American and culturally sensitive groups, so as to best meet the unique needs of each resident;
- Provide residents the opportunity to practice their spirituality and religion of choice;
- Provide aftercare services to those residents designated as needing low intensive services;
- Provide residents with at least 2 hours of recreation per day;
- Provide opportunities for family involvement in treatment and correctional programming that includes weekly visitation; and
- Provide opportunities for full-time employment and referrals.

Program staff review the effectiveness of correctional programming and treatment services through a process of continual quality assurance and total quality management. Feedback is gathered from residents, administration and program staff.

## **MALE ASSESSMENT CENTER**

The Male assessment center is a program operated at the Bismarck Transition Center (BTC) that provides assessments for short sentenced inmate offenders as well as probationers and parolees under the supervision and management of the ND DOCR who would otherwise be subject to revocation of probation or parole and incarceration. The program assesses the offender and recommends an appropriate plan of care including treatment at BTC, Tompkins Rehabilitation and Correctional Center, DOCR facilities, treatment in the offender's home community or revocation. A multi-disciplinary assessment team is utilized to make recommendations. The assessment process is up to 60 days.



## **BTC ASSESSMENT CENTER FACT SHEET**

- ❖ The BTC Assessment Center is a facility located in the City of Bismarck.
- ❖ A 162 contractual bed facility with 30 beds reserved for the Assessment Center.
- ❖ The assessment phase is a period not to exceed sixty days with a maximum of 30 male beds.
- ❖ The Center determines the rehabilitative needs of referred offenders for treatment and case management.
- ❖ The preliminary needs and objectives are assessed, developed and put into action.
- ❖ Offenders referred to the BTC Assessment Center should be facing revocation proceedings and likely be serving time in prison if this intermediate programming was not available.
- ❖ Referral must include a signed Intermediate Measures, Release of Information, and/or Modification of Probation form.
- ❖ If the assessment committee finds the offender is not appropriate for treatment services the committee may recommend the offender be held in custody and brought before the court of jurisdiction or parole board for further legal proceedings.

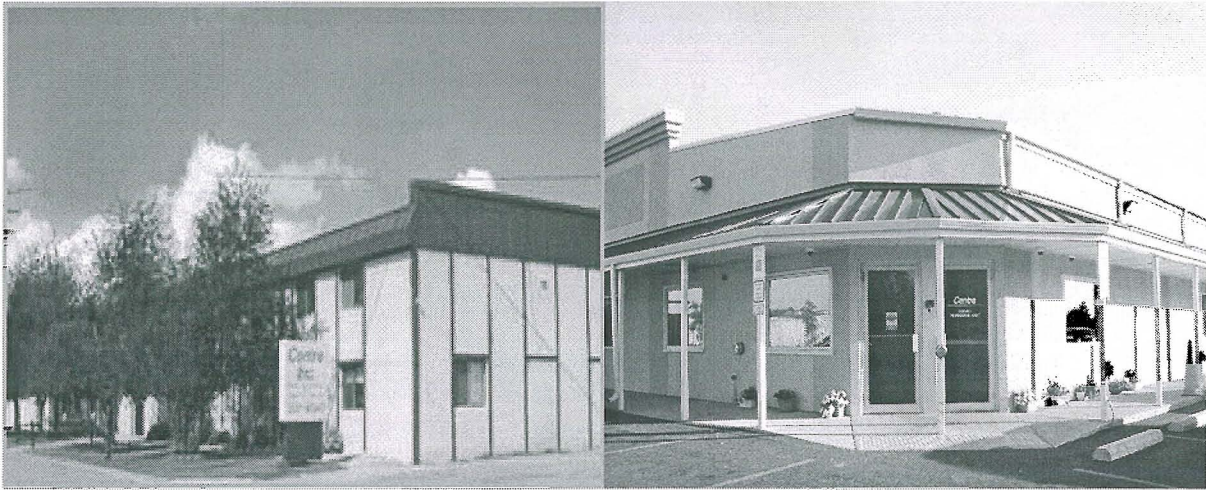
## **BTC ASSESSMENT CENTER ADMISSION GUIDELINES**

The offender is considered eligible for admittance into the BTC Assessment Center if he meets the criteria identified below. However, supervisors may waive the above criteria in cases where special circumstances warrant an offender's consideration for placement in the assessment center.

1. All cases need to be reviewed with a supervisor.
2. The offender may not have any pending felony or misdemeanor charges.
3. Past participation in treatment programs will not prohibit an offender's acceptance.
4. Short term offenders are eligible.
5. All referrals must have a sufficient period of supervision remaining to complete treatment when making a referral.
6. Be at a cognitive stage of readiness to change, acknowledges the existence of a substance use problem, is capable of self-care, and is sufficiently ready to change.
7. Must not have an emotional, behavioral, or cognitive condition or complication impacting immediate safety.
8. Must not have signs or symptoms of withdrawal or withdrawal needs that cannot be safely managed.
9. Offender must be pre-screened and the Transport Case Notes Form must be completed and accompany the offender to the center.

On July 31, 2009 the Department had 123 (117 male/6 female) offenders placed at this facility.

# Centre, Incorporated



## **INTRODUCTION**

Centre, Inc. is a North Dakota nonprofit agency that was formed in the mid 1970s. It assists the courts and other mainstream public agencies in providing community-based treatment services to establish halfway houses and other programs as a cost-effective rehabilitative program and/or intermediate measure/sanction, as well as an adjunct to parole and probation supervision.

Centre Inc's mission is to provide rehabilitative services to individuals to achieve social reintegration. The role of Centre Inc. has been to provide for the public safety by offering specialized programs in the state that can effectively monitor, house, & rehabilitate individuals outside of institutions, jails, and prisons.

Centre Inc. programming focuses on treating criminogenic and/or destructive behavior and thinking with services tailored to each individuals needs. The programming continues to evolve and improve with attention given to an expanded array of issues. Addiction programming is mandatory for substance dependent individuals. Vocational counseling, job training, and job placement are priority program objectives for all clients. The staff teaches accountability and personal responsibility to residents/clients within a highly structured program. Consistency of effort and clarity of expectations are the valued underpinning of the case management effort.

**Residential Programs:** Each residents program within the context of the larger program is individualized and addresses the individual's issues with a coherent, mutually agreed-upon treatment plan.

For additional information about Centre, or the services provided, please contact the Program Manager or Program Coordinator at the facility/office nearest you.

Centre, Inc.  
Halfway House  
123 15th Street North  
Fargo, ND 58102  
(701) 237-9340

Centre, Inc.  
Halfway House  
100 6<sup>th</sup> Avenue SE  
Mandan, ND 58554  
(701) 663-8254

Centre, Inc.  
Community Programs  
100 6<sup>th</sup> Avenue SE  
Mandan, ND 58554  
(701) 663-0926

Centre, Inc.  
Adult & Adolescent Programs  
201 South 4th Street  
Grand Forks, ND 58208  
(701) 746-6303

Centre Inc.  
Quarter Way House & Day Reporting  
220 6<sup>th</sup> Ave. N.  
Fargo, ND 58102  
(701) 235-1617

Centre, Inc. Detox  
1519 1<sup>st</sup> Avenue South, Suite B  
Fargo, ND 58103  
(701) 237-3341

### **RESIDENTIAL TRANSITIONAL LIVING WITH OR WITHOUT CASE MANAGEMENT (ADULTS)**

Centre currently operates adult residential living facilities in Mandan, Fargo, and Grand Forks.

Centre provides three types of transitional living facilities: Halfway House and/or Residential Re-Entry Centers (Mandan, Fargo, & Grand Forks), a Quarter Way house in Fargo, and transitional and permanent housing (apartment complex) for Veterans in Fargo.

Centre's residential services provide a supportive and structured living environment in which general counseling, drug testing, intensive monitoring, and chemical dependency and other treatment services are provided to adults who can benefit from a cognitive behavioral approach. The transitional residential facilities are staffed on a twenty-four hour a day basis. Although most residents are allowed to leave the facility for work and programming purposes, they must sign out and in with staff approval prior to leaving and upon return. Depending on varied referral source parameters and/or level/phase systems, residents may also sign out for other purposes.

Upon resident admission an intake interview is conducted. At the Fargo and Mandan halfway and Quarter way housing assessment(s) are conducted and a comprehensive individualized treatment plan is developed. Centre has a trained, certified, licensed counseling and/or case management staff that provide services to a wide range of client needs. Residents who are in need of additional specialized therapeutic services may be referred to other agencies in the community.

The client's length of time in residency varies, as each individual is unique with special needs and circumstances. However, during their stay, residents are expected to comply with the facility rules and actively participate in recommended counseling and/or programming. Clients are ordinarily discharge upon achieving the goals of the individualized treatment plan applicable to the current level of care or upon successfully completing any court ordered sentence. Clients may be discharged at any time for violating program policies or demonstrating a lack of motivation in addressing issues.



The following services are offered at Centre Mandan (centreinc.org or 701-663-8228) and Centre Fargo (centreinc.org or 701-237-9340):

- Employment Skills Group
- Motivational Enhancement
- Chemical Dependency Aftercare ASAM Level1-(Adult)
- Cognitive Restructuring Group (1) Rational Thinking
- Cognitive Restructuring Group (2) Criminal Lifestyles
- Conflict Resolution
- Seeking Safety
- Living Skills Group- Parenting, Money Management, & Wellness
- Cultural Diversity Workshop
- Drug Testing
- Individual Counseling/Case Management
- Electronic Monitoring Services
- Day Reporting

Community Service Program is offered at the Mandan site and both Chemical Dependency Treatment ASAM Level II.1-(Adult) and the Drug Intervention Program are offered in Fargo.

### **FACILITY CAPACITIES**

- Fargo male ½ way house/re-entry center/transition program: 84 beds
- Fargo female ½ way house/re-entry center/transition program: 35 beds
- Fargo Homeless Assessment, Treatment Program (HART): 48 beds
- Fargo Quarter way house: 30 beds
- Mandan male ½ way house/re-entry center/transition program: 48 beds
- Mandan female ½ way house/re-entry center/transition program: 28 beds
- Grand Forks adult program: 26 beds
- Grand Forks adolescent program: 8 beds

### **FEMALE ASSESSMENT CENTER**

The Female assessment center is a program operated at Centre Fargo that provides assessments for probationers under the supervision and management of the ND DOCR who otherwise would be subject to revocation of probation and incarceration. The program assesses the offender and recommends an appropriate gender-responsive plan of care including treatment at Centre, Tompkins Rehabilitation and Correctional Center, DOCR facilities, treatment in the offender's home community or revocation. The assessment process is up to 60 days.

### **FEMALE TRANSITION PROGRAM**

The Female Transition Program is available at Centre Mandan and Centre Fargo. It provides gender-responsive residential transitional services for female DOCR inmates that are within two (2) years of their parole eligibility date or discharge date.

## **MALE TRANSITION PROGRAM**

The Male Transition Program is available at Centre Fargo. It provides residential transitional services for male DOCR inmates that are within two (2) years of their parole eligibility date or discharge date.

## **PURPOSE OF THE FEMALE AND MALE TRANSITION PROGRAMS**

1. To provide alternatives to direct release from correctional institutions for selected individuals.
2. To provide diagnostic and evaluative services for those individuals committed to the State Correctional Systems.
3. To provide an alternative to institutionalization or probation. In some cases it may not be appropriate to sentence an individual to a penitentiary, but the individual may require greater supervision than that provided by probation.
4. To afford offenders the opportunity to resolve those issues that brought them into conflict with the law.
5. To permit offenders to participate in activities that would otherwise not be available in confinement: full-time employment, formal education, individual and group counseling, involvement in community programs, approved visiting, recreation, leisure time activities and a gradual release program.
6. To provide a stable foundation from which individuals may leave the correctional system prepared to handle their responsibilities in the community. Residents can obtain work, locate appropriate housing, accrue savings, and more fully develop their social problem-solving skills.

On July 31, 2009 the Department had 136 (85 male/51 female) offenders placed at the Centre, Inc facilities (halfway house and quarter house beds).

# **Heart Of America Correctional & Treatment Center (HACTC)**



## **Heart Of America Correctional & Treatment Center (HACTC)** **Formerly called North Central Corrections & Rehabilitation Center (NCCRC)**

The DOCR contracts with North Central Rehabilitation & Offender Center in Rugby, ND for 25 substance abuse treatment beds. The treatment is provided in a secure jail setting.

### **Resident Population**

The DOCR referrals are men convicted in adult court and sentenced to the custody and control of the DOCR. The population is comprised of male prison inmates.

The typical offender referred has alcohol and/or other drug dependence, has legal difficulties that are exacerbated by alcohol/drugs, and previous non-compliance with treatment recommendations



or conditions of probation supervision. The program targets non-violent inmates that are physically and mentally stable,

### **Treatment Program**

All individuals have been diagnosed with a DSM-IV-TR Substance Abuse or Substance Dependence diagnosis and participate in Addiction Treatment Group and Cognitive Restructuring Group. Some individuals may also be mandated to attend specific programs. Other groups offered include: Relapse Group, Occupational Therapy, Anger Management, Recreational Therapy, Embracing Fatherhood, Re-Entry Group, Relationships Group and GED. Human Relations Counselors are available to assist with discharge planning. The average length of stay is 90 days.

On July 31, 2009 the Department had 18 (all male) offenders placed at this facility for treatment.

# Missouri River Correctional Center (MRCC)



## **MISSION**

The mission of the Missouri River Correctional Center is to provide a safe and healthy environment for minimum security residents to apply themselves to the task of rehabilitation. This is accomplished by maintaining proper custody, work, education, and treatment programs, encouraging residents to make the needed changes to be law abiding and successful in society.

## **FACILITY DESCRIPTION**

The Missouri River Correctional Center (MRCC) is the minimum security affiliate to the North Dakota State Penitentiary. It is comprised of 12 dorms surrounding the control center, in a wagon-wheel design.

The facility, which houses 151 male inmates, opened in December of 1992. The former name "State Farm" was dropped because the primary focus has changed from agricultural work details to vocational and educational programming, and more main stream employment. There are approximately 25 different work assignments at MRCC and they mirror what would be in the community; kitchen, laundry, maintenance, janitorial, etc. There are a number of educational programs such as tutoring, GED, computer classes and off-site education release. We have an award winning Auto Mechanics class where college credits can be earned. We also have a work release program where those eligible can earn a wage commensurate to what others make in the community. Our objective is to target goals the inmate needs to address to make him a better person than what came to us and to help prepare them for transition back into their home towns.

The MRCC has a nurse at the facility and shares some resources with the penitentiary for major medical cases. We have two full-time counselors and a Correctional Caseworker assigned to our treatment unit. We offer a multitude of religious opportunities to meet the inmate's demand and try to accommodate each of our offenders with as much visitation as possible. The MRCC understands that the family is a key tool for inmates and may be the only real support system they might have. Strengthening the bond with family members is a critical component to the inmate's successful reintegration. Rough Rider Industries provides a number of opportunities for the inmates. There are sandbagging projects that assist flood plagued areas, welding for agricultural entities, and other projects that arise. The Youth Correctional Center (YCC) assists us with a Carpentry Program which is sponsored by home builders in the community.

Staffing for the MRCC consists of the Facility Director, two (2) Case Managers, four (4) Correctional Caseworkers, an Administrative Assistant, four (4) Shift Lieutenants, two (2) Food Service Directors, and approximately four (4) correctional officers per shift. There are approximately 30 inmates per security staff member at any given time. Each Correctional Caseworker and Case Manager maintains a caseload of about 30 inmates. One of the Case Managers is in charge of work and education release and is the liaison for inmate movement. The Unit Management staff has strived hard to make our Individual Performance Plans among the best in the DOCR and they strongly support the Transition from Prison to the Community initiatives. The MRCC is an accredited facility with an excellent record for safety and progressive thinking. We are extremely proud of our professional staff and the positive effects we have had on the lives of our clients.

### **COUNSELING/TREATMENT PROGRAMS**

Some of the treatment programs offered at the MRCC are Intensive 2.1 (chemical addiction treatment) and Cognitive Change. If recommended for treatment programming, the inmates name is placed on a waiting list. The lists are generally developed in accordance with discharge or personal appearance dates before the Parole Board. Some treatment may be completed prior to the personal appearance before Parole Board.

### **SELF HELP PROGRAMS**

Literature from the Treatment Department on topics such as aggression control and substance abuse may be available through the Treatment Department. The need for the self help program

is identified by inmate self report, Case Manager sessions, Correctional Case Worker sessions, or contact with treatment staff. The MRCC has various NA, AA and a CMA self help groups.

### **RAPID INTERVENTION PROGRAM (R.I.P.)**

The R.I.P has been designed as an intervention for inmates on parole that have violated their conditions, and are destined to return to the Penitentiary to fulfill their parole obligations. The program is designed to offer an alternative for violators. Instead of doing all their suspended time, the R.I.P. will offer a chance to complete earlier and return to community life. It has been designed as an open entry, open exit program. The inmate's positive behavior and staff evaluations will determine how long they will remain in the program. The goal is to get the inmate back into the community as soon as possible which is a tremendous benefit to the inmate. Inmates involved in the R.I.P. program are expected to adhere to a more strict structure and guidelines than other inmates at the MRCC.

On July 31, 2009 the Department had 141 (all male) offenders placed at this facility.



# Teen Challenge



## **PHILOSOPHY AND MISSION**

**Philosophy:** North Dakota Teen Challenge is founded on firm moral principles, grounded in the Bible. These principles are the basis and foundation for healing, restoration, and life recovery.

**Mission:** North Dakota Teen Challenge assists adults, ages 18 and above, in gaining freedom from addiction by:

- Applying Biblical principles to establish a drug-free lifestyle;
- Enhance social skills;
- Improving work habits;
- Building supportive relationships and learning relationship skills; and
- Growing in a personal relationship with Jesus Christ.

North Dakota Teen Challenge is a faith-based residential recovery program for people battling with drug and alcohol addiction. Adults, ages 18 and over, from every ethnic, socio-economic, and religious background are welcomed with open arms as they embark on their new life.

Teen Challenge was started in New York City in 1958 by Reverend David Wilkerson and now has 600 centers worldwide.

### **THE RESIDENT POPULATION**

On July 31, 2009 the Department had 33 (24 male/9 female) offenders placed at this facility.