



AMERICAN
INSTITUTES
FOR RESEARCH®

Measures of the Productivity of North Dakota's Higher Education System

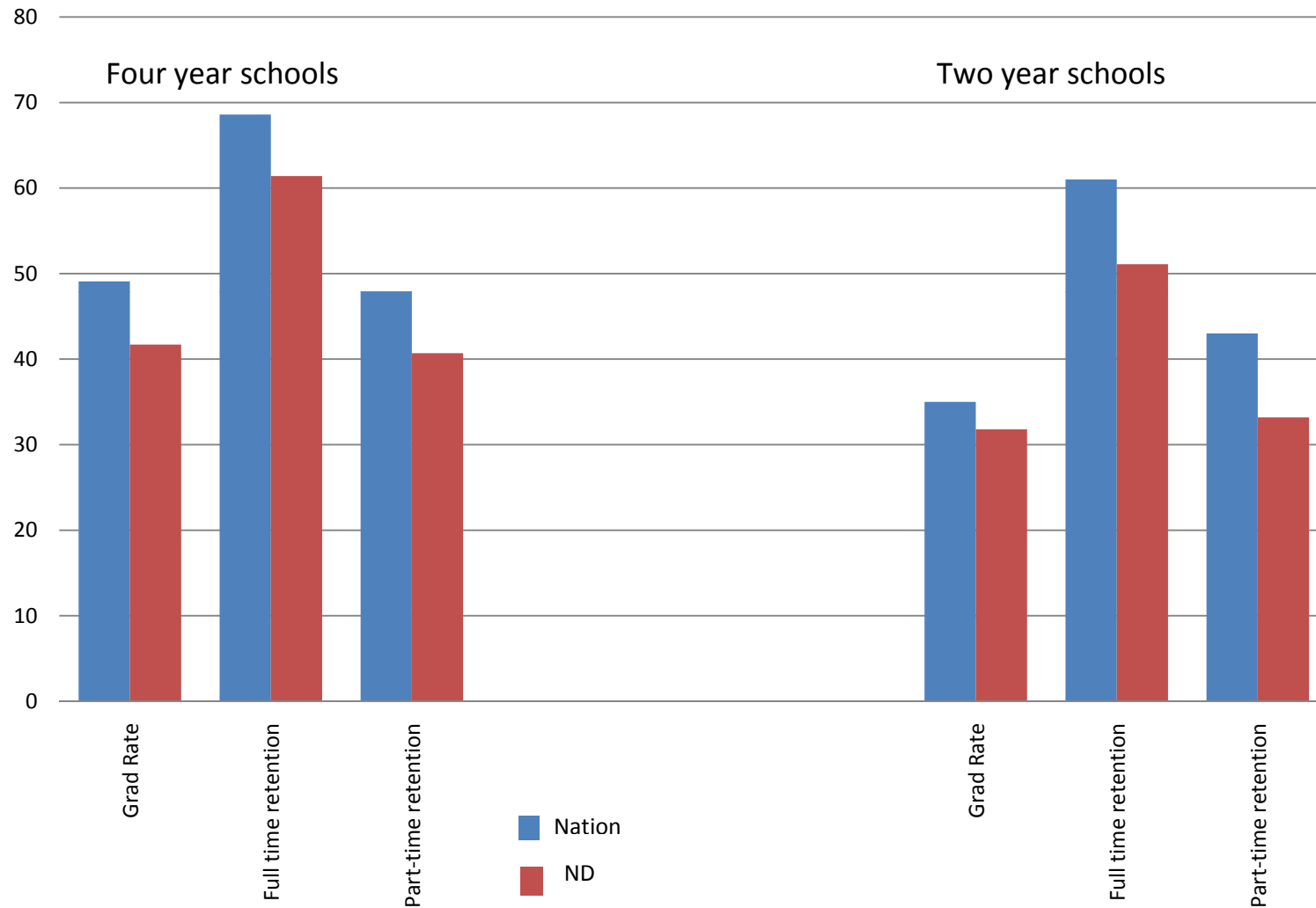
Mark Schneider

Vice President

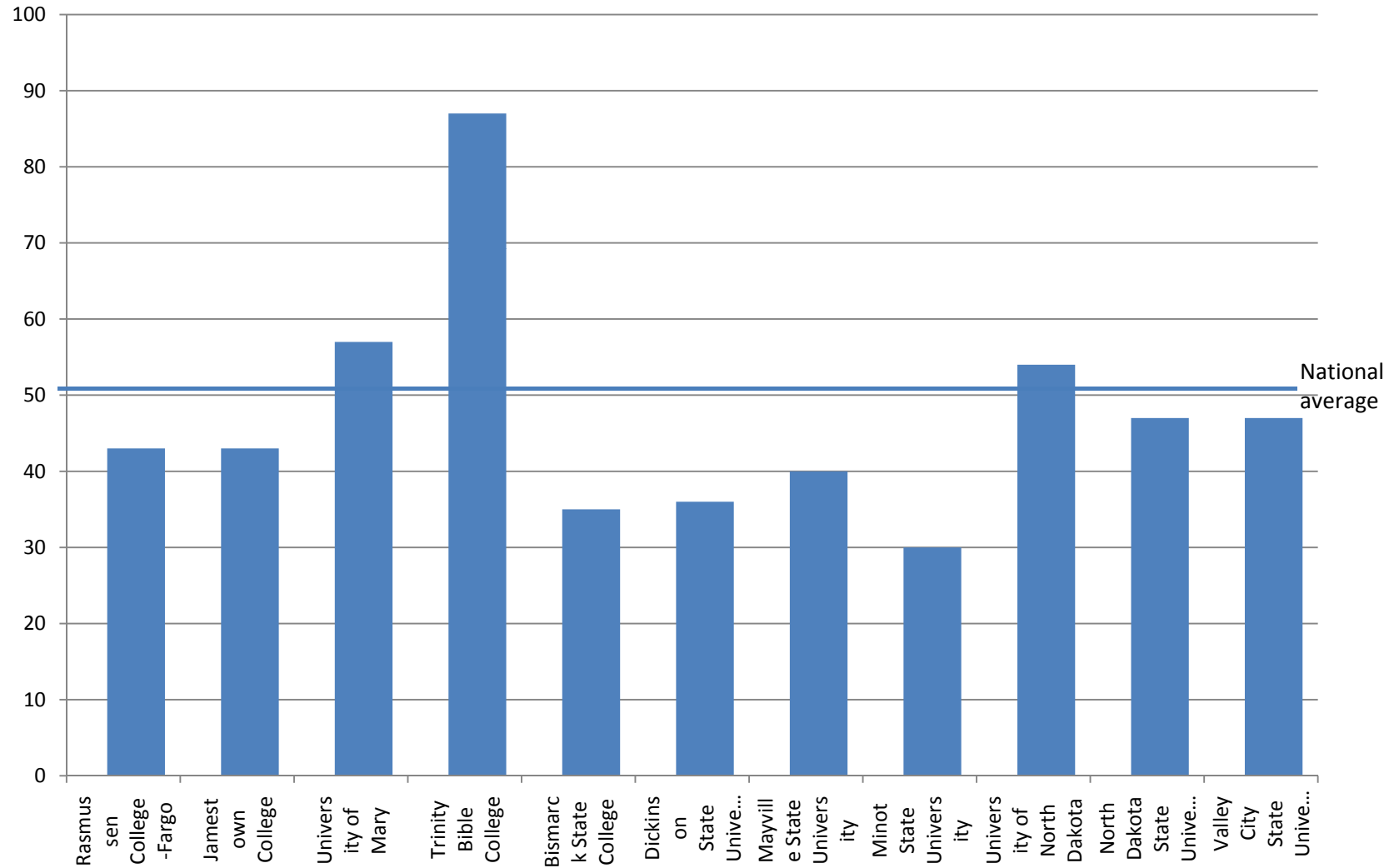
American Institutes For Research

Measures of Student Success

North Dakota Lags in Important Measures of Student Success



Variation in 2008 Graduation Rates, four year and above campuses



It's not only about crossing the
finish line.

Finishing the first lap is critical

Nationwide

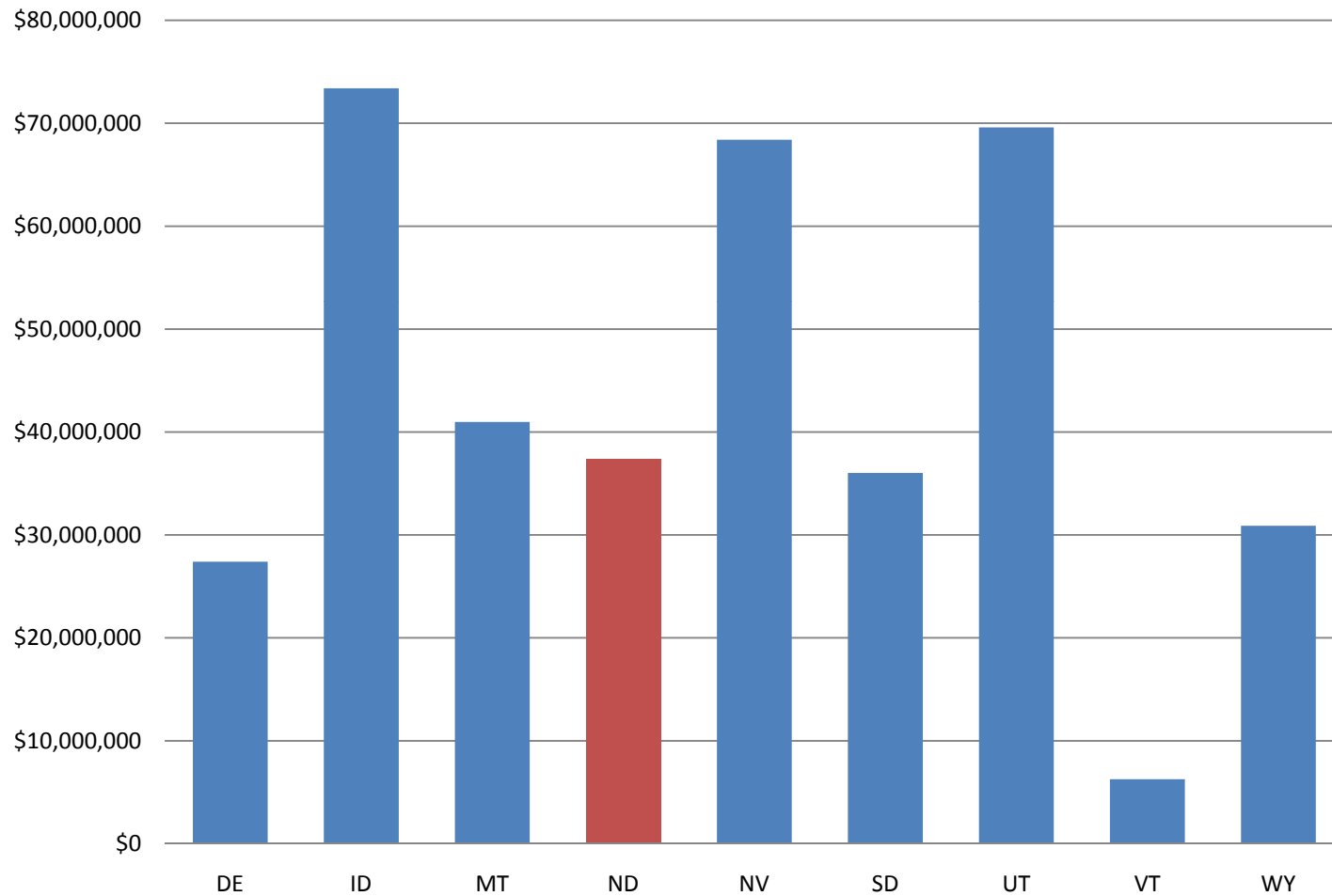
- 30% of students dropout before starting their second year
- 60% or so graduate after 6 years – 40% don't
 - This means that most of the loss takes place during year 1.
- We don't know much about how to control these losses
 - But these losses are expensive to students—and to taxpayers

Losses from High Attrition Between year 1 and year 2 (GRS cohort only)

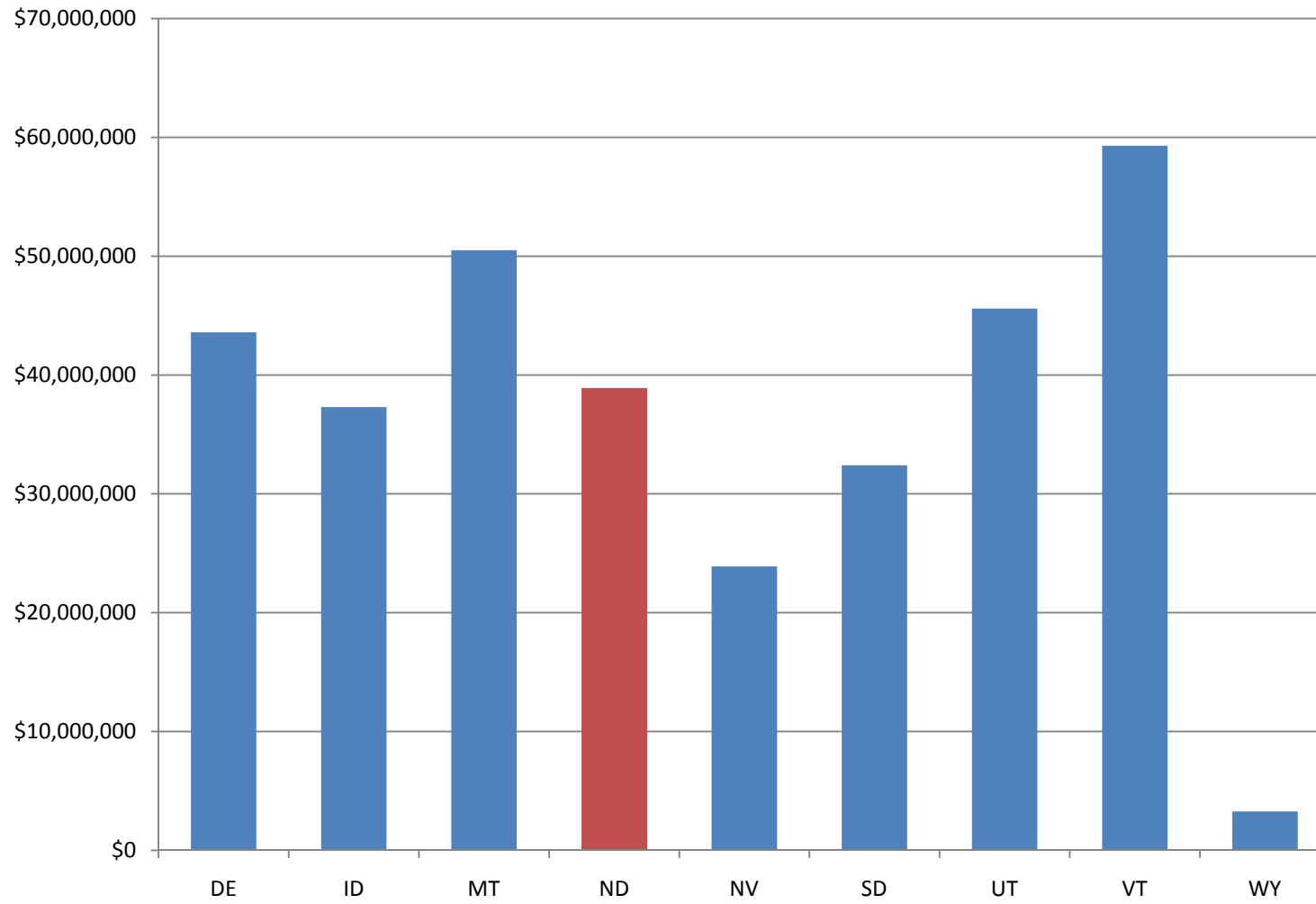
Five Year Cumulative Losses from First Year Attrition

State subsidies (thru legislation)	\$6,2 billion
Federal grants to students	\$1,5 billion
Institutional grants to students	\$3,8 billion
State grants to students	\$1,4 billion
Student tuition/fees	\$13,6 billion
Number of students not returning from year 1 to year 2	1,4 million

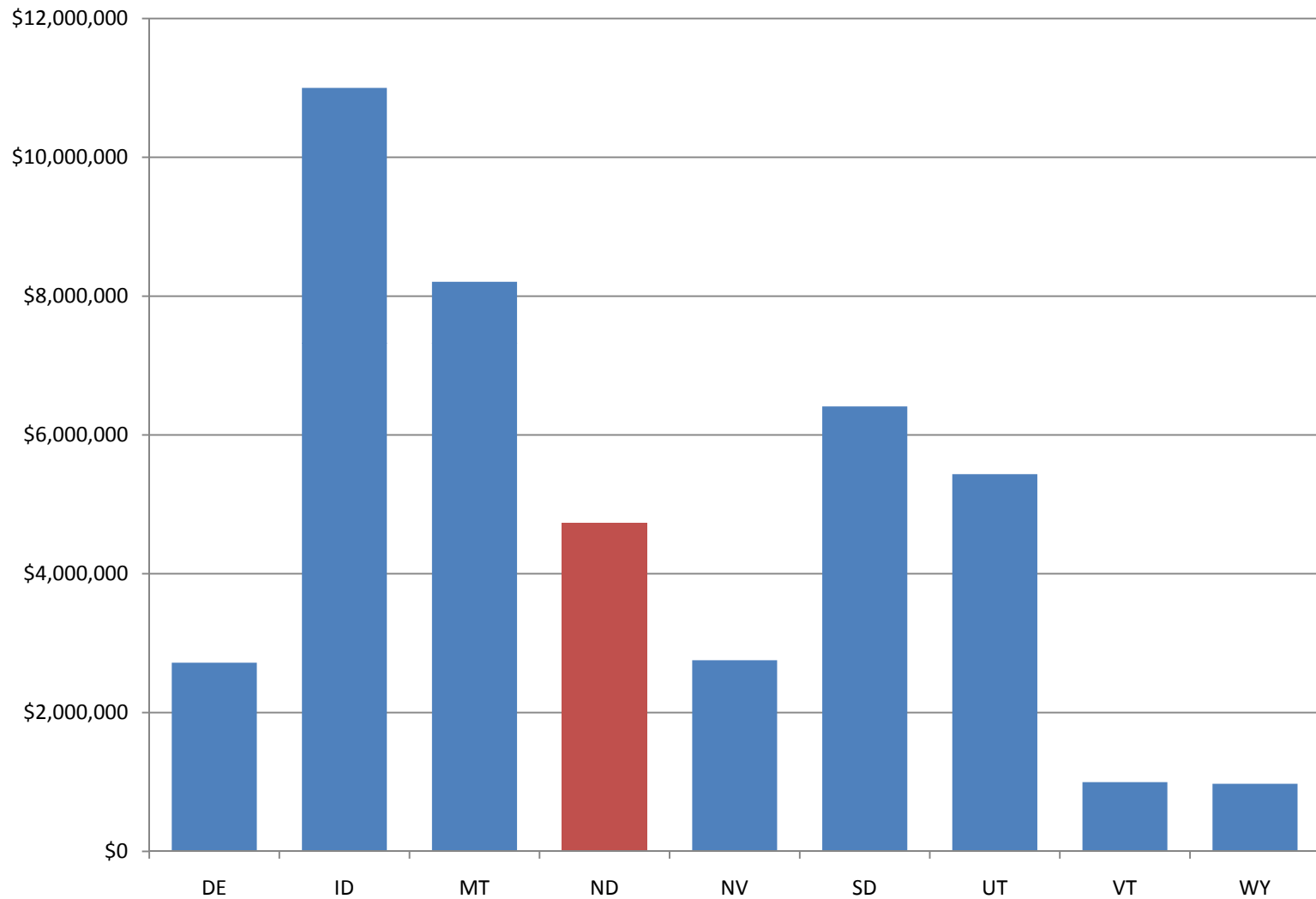
Total State Expenditures on First-Year Dropouts, 2003-2008 AY



Net Tuition Loss by First-Year Dropouts, AY 2003-2008



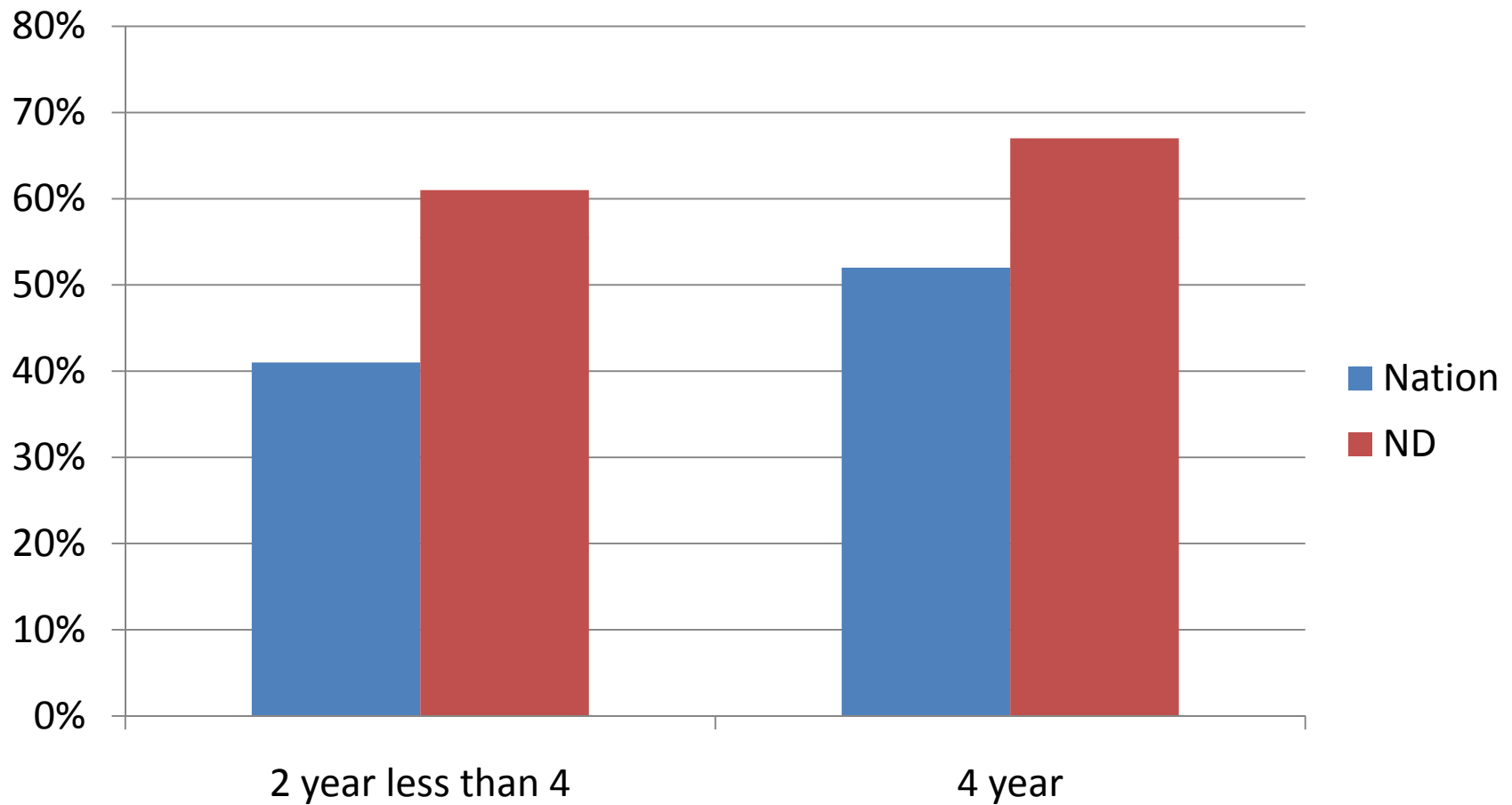
Federal grants to first-year dropouts



Student Debt is a Growing Issue

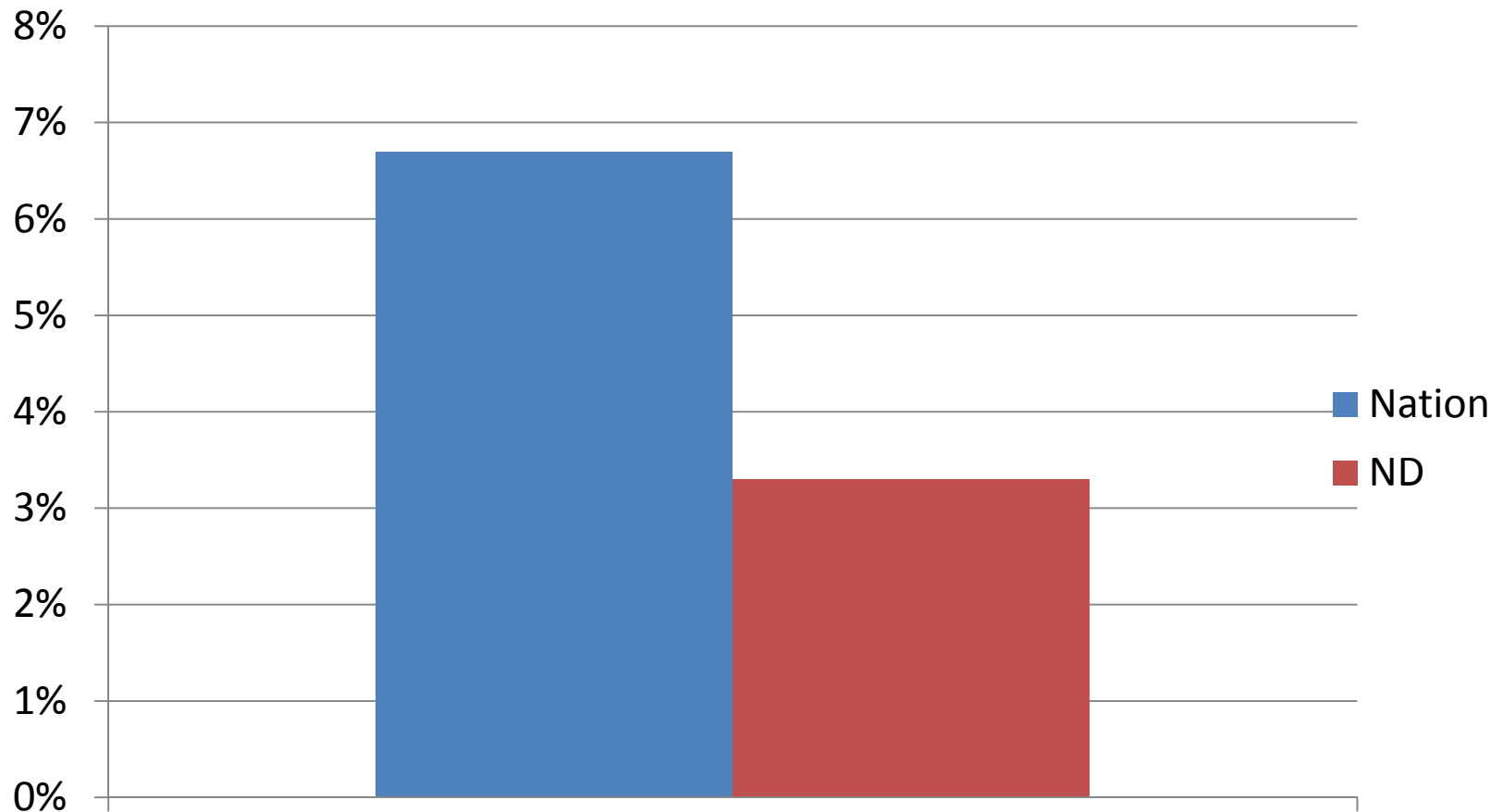
Student Loan Repayment Rates

higher is better



Student Loan Cohort Default Rates

Lower is better

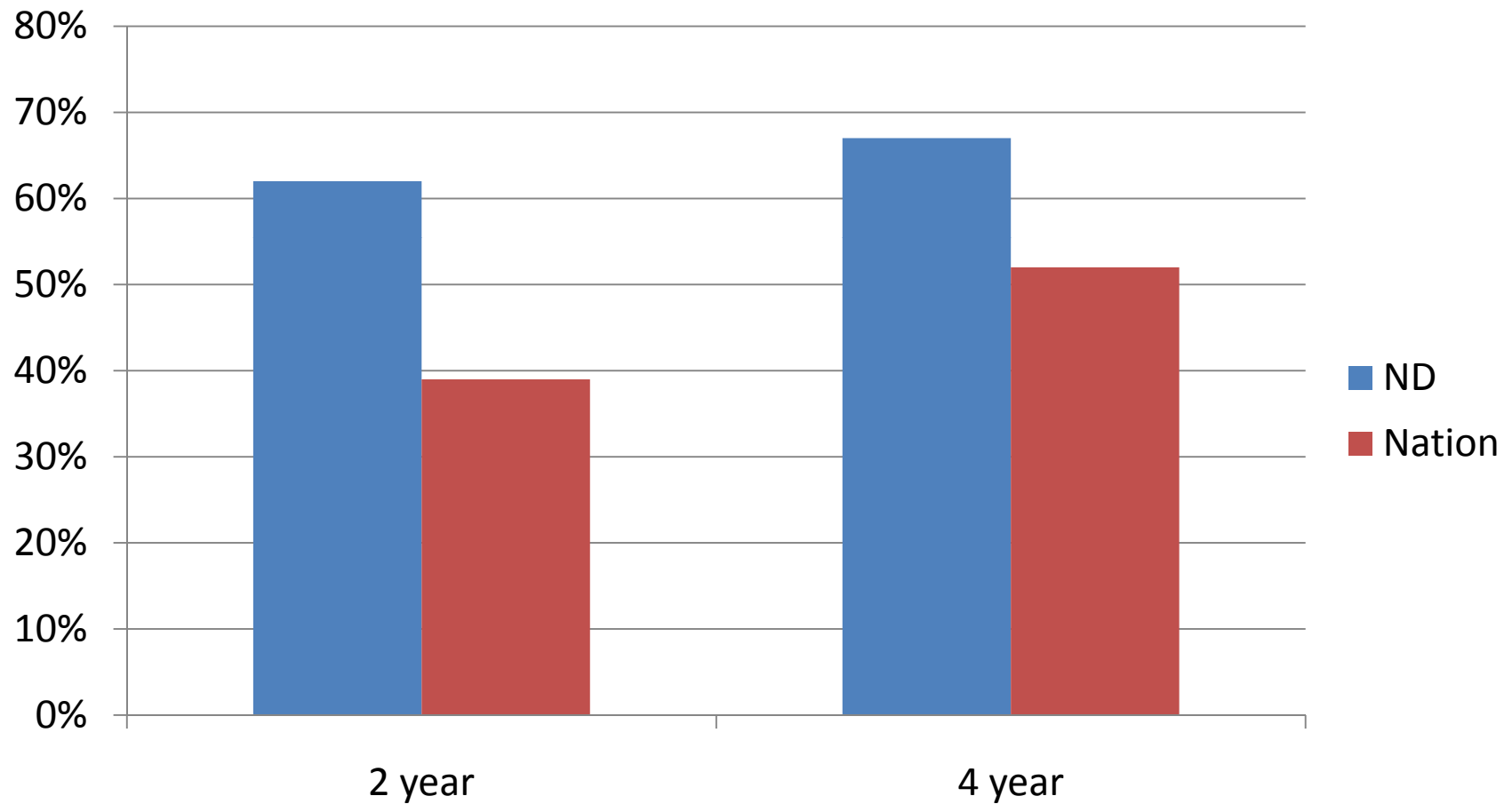


Debt-Service to Salary Ratio

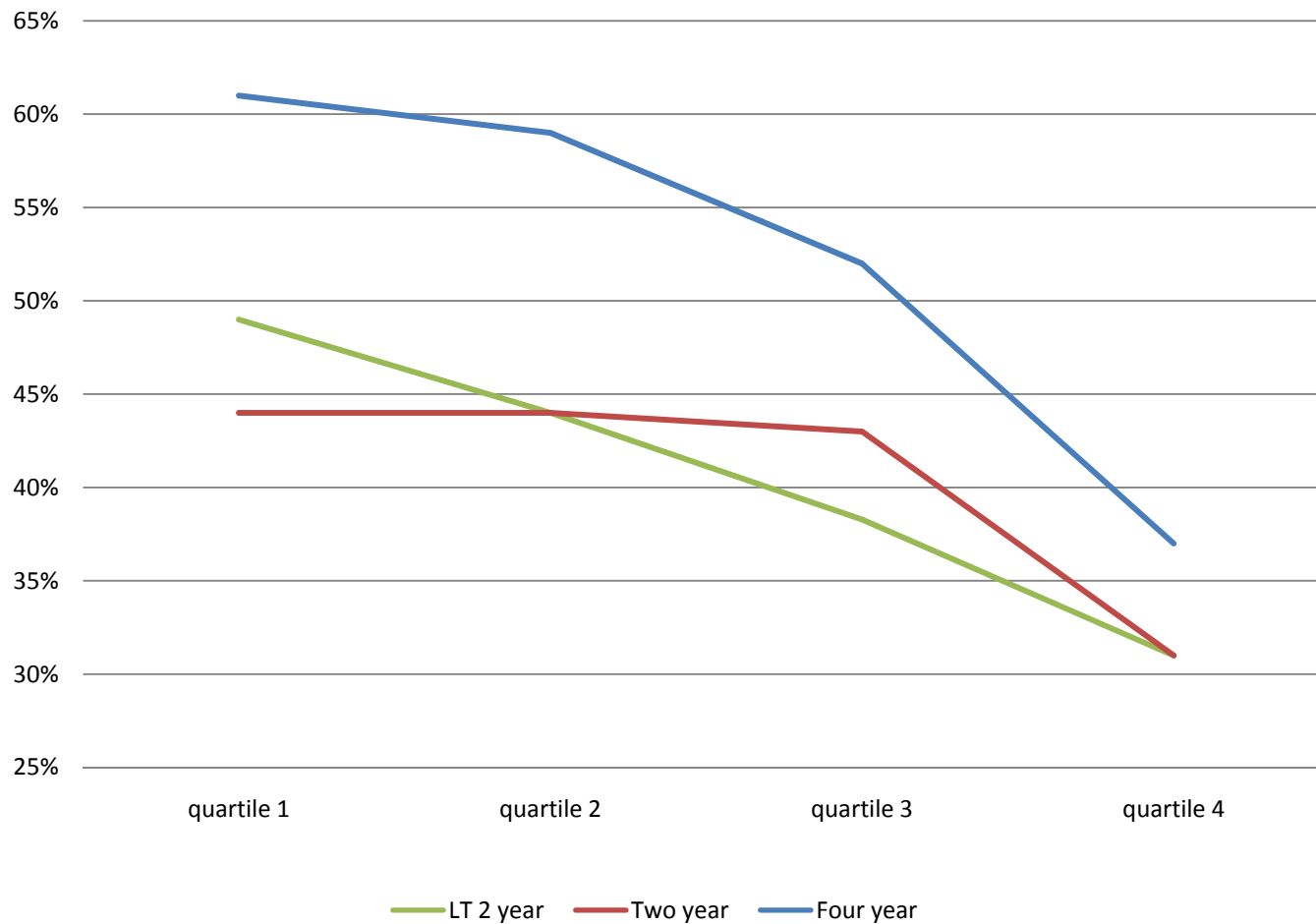
	Avg. Debt	Starting Salary	Debt service/salary
U. North Dakota	\$21,330	\$42,900	3.3%
North Dakota State	\$24,001	\$44,1500	3.7%

Nationwide debate about repayment
rates

Repayment rates are higher in ND



Repayment rates decline with the concentration of Pell student, by sector



Implications for Proposed Cutoff Points

- Based on the August 13 repayment data:
 - 40 percent of community colleges have payment rates below the 35% threshold.
 - More than 90% of Historically Black Colleges and Universities (HBCUs) fail to meet the 35% cutoff score.
 - Approximately 45% of campuses with high concentrations of Hispanics have repayment rates below 35%.
 - Among the 25 percent of bachelor degree-granting institutions with the highest concentration of Pell grants, half fell below the 45% cut point and almost half of those had repayment rates below 35%.

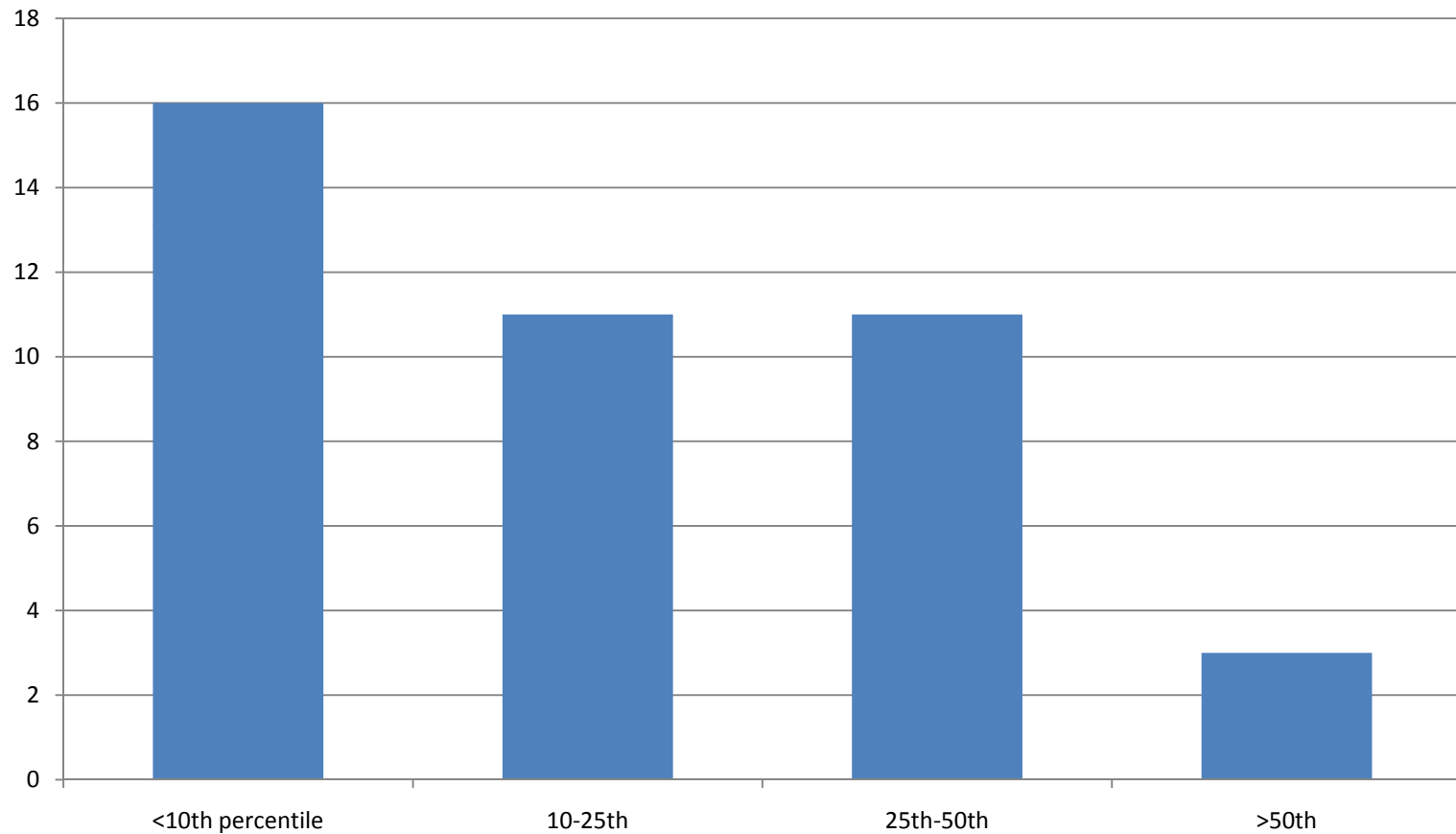
Research Universities?

Every faculty member and every administrator wants this:



North Dakota State

Distribution of Programs



Source: Academic Analytics

University of North Dakota programs rank even lower

- 14 out of 24 programs are at or below the 10th percentile.
- Highest ranked program is 45th percentile.

New web site to be released in
early-October focused on high level
college productivity measures

<http://collegemeasures.org/>