



State Water Commission **OVERVIEW**

**Presented To: The Water-Related
Topics Overview Committee**

By: State Engineer Dale L. Frink, P.E.

Historical Perspective and Purpose

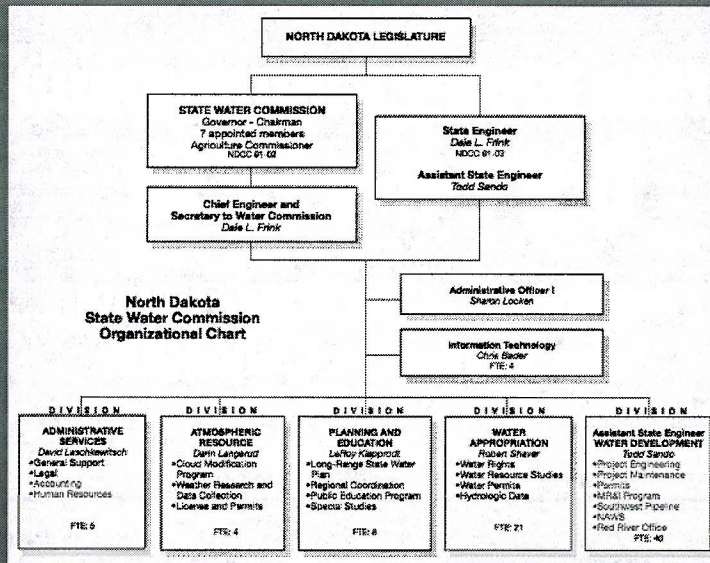


- The Office of the SE was created by the Legislature in 1905 to regulate and administer matters concerning the allocation of ND's water resources.



- The SWC was created in 1937 by legislative action in response to the 1930s drought for the specific purpose of fostering and promoting water resource development throughout ND.

The SWC Today



North Dakota State Water Commission and Office of the State Engineer *Strategic Plan*



2009 - 2011

SWC & SE Strategic Plan

- Outlines agency direction, 2009-2011 biennium

Table of Contents

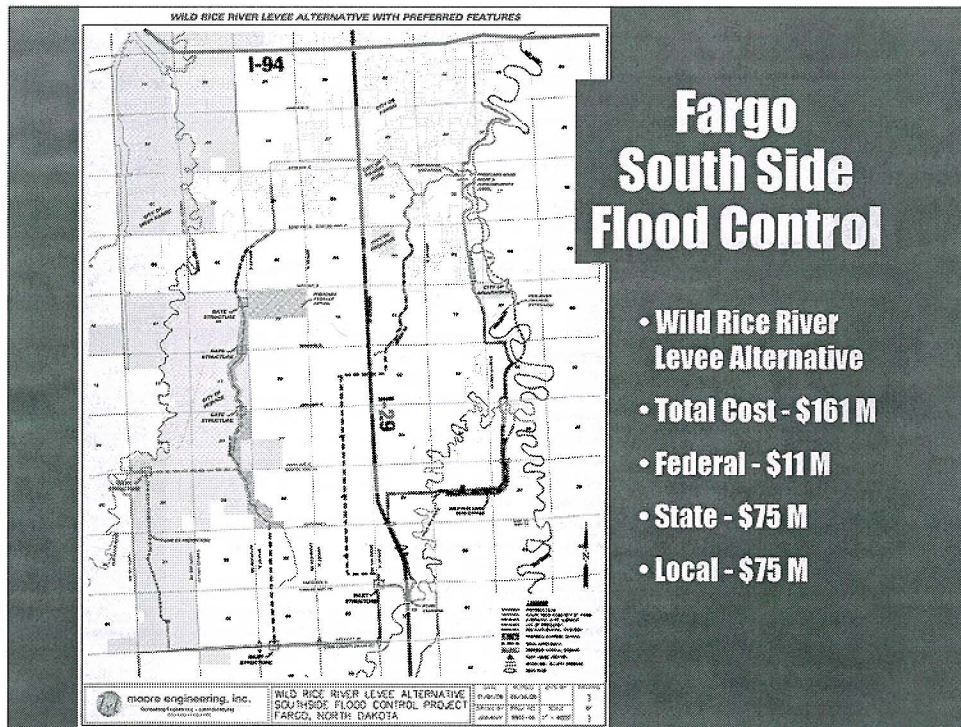
	PTEs*	PAGE
A message from the State Engineer.....		1
Vision, Mission, Philosophy and Values; Agency Goals.....		2
Organizational Chart.....		3
Strategic Planning Focus Projects & Programs.....		4
Administration & Support Services.....	11.0	6
ARB Cooperative Observer Network.....	0.5	7
Atmospheric Research & Development Program.....	3.0	8
Community Water Supply Studies.....	2.0	9
Cost-Share Program.....	1.5	10
Dam Safety Program.....	2.25	11
Design and Construction.....	7.25	12
Devils Lake Flood Control.....	4.0	13
Drought Disaster Livestock Program.....	1.0	14
Floodplain Management.....	3.5	15
Investigations.....	6.5	16
Municipal, Rural & Industrial Water Supply Program.....	2.25	17
North Dakota Cloud Modification Project.....	2.5	18
Northwest Area Water Supply.....	3.25	19
Red River Valley Water Supply.....	1.25	20
Regulatory Program.....	6.0	21
Southwest Pipeline Project.....	2.25	22
State Water Management Plan.....	3.0	23
Water Education for Teachers.....	1.5	24
Water Resource Data Information Dissemination.....	3.0	25
Water Resource Monitoring.....	6.0	26
Water Resource-Related Economic Development.....	1.0	27
Water Resource Research.....	1.5	28
Water Rights Administration & Processing.....	4.5	29
Water Rights Evaluation & Adjudication.....	3.0	30
Watershed Planning & Coordination.....	2.5	31
Appendix.....		33
(Total Full-Time Employees*).....	811	

Fargo-Moorhead Metro Feasibility Study

- U.S. Army Corps study
- Will develop a plan for flood damage reduction in F-M Metro area
- SWC to be Cooperating Agency in EIS/NEPA process

PHOTOS COURTESY OF DONALD SCHWERT



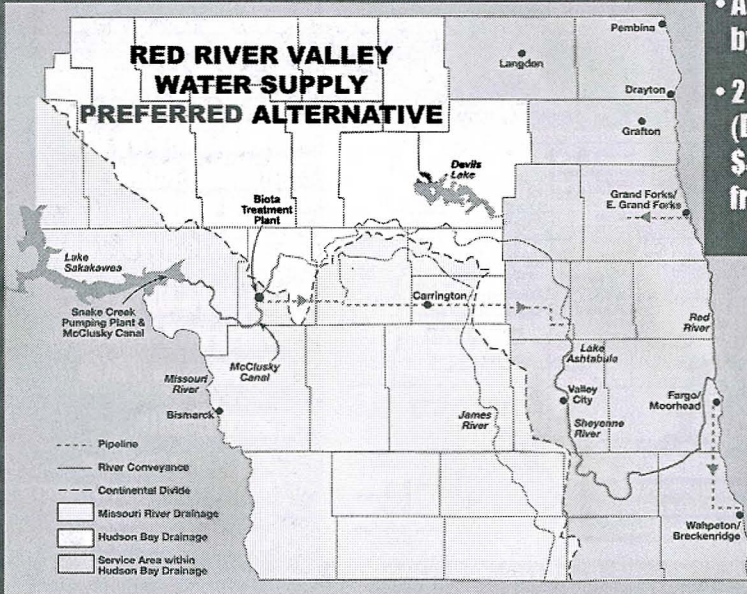


RRBC Long-Term Flood Solutions Study

- Financial and staff commitment
- \$500,000 from both ND & MN
- Process involves three phases:
 - inventory potential solutions
 - analyze solutions and how they might be integrated
 - develop implementation strategy

RRVWS

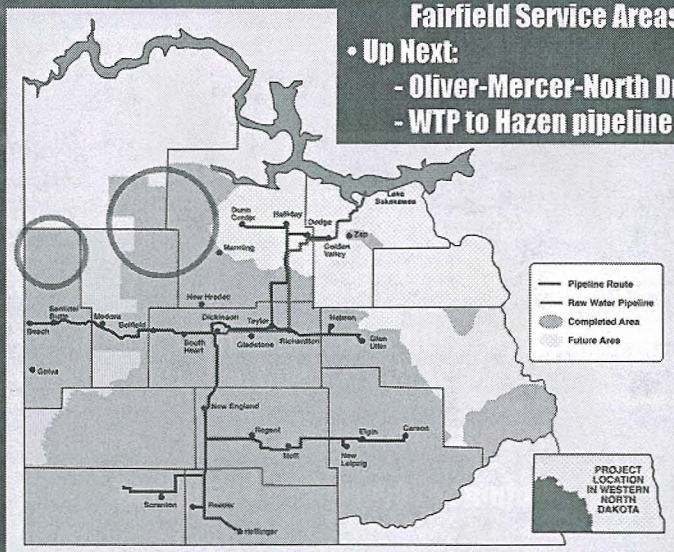
RED RIVER VALLEY WATER SUPPLY



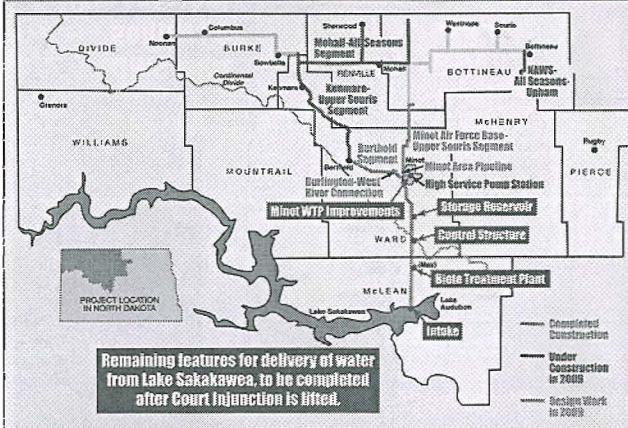
- **ROD**
- **Authorization by Congress**
- **2009-2011 (Design Plus)**
\$4 Million from SWC

SWPP

- **Recently Complete/Under Construction:**
 - Trotters Pocket
 - Grassy Butte, Killdeer Mountain & Fairfield Service Areas
- **Up Next:**
 - Oliver-Mercer-North Dunn WTP
 - WTP to Hazen pipeline



NAWS

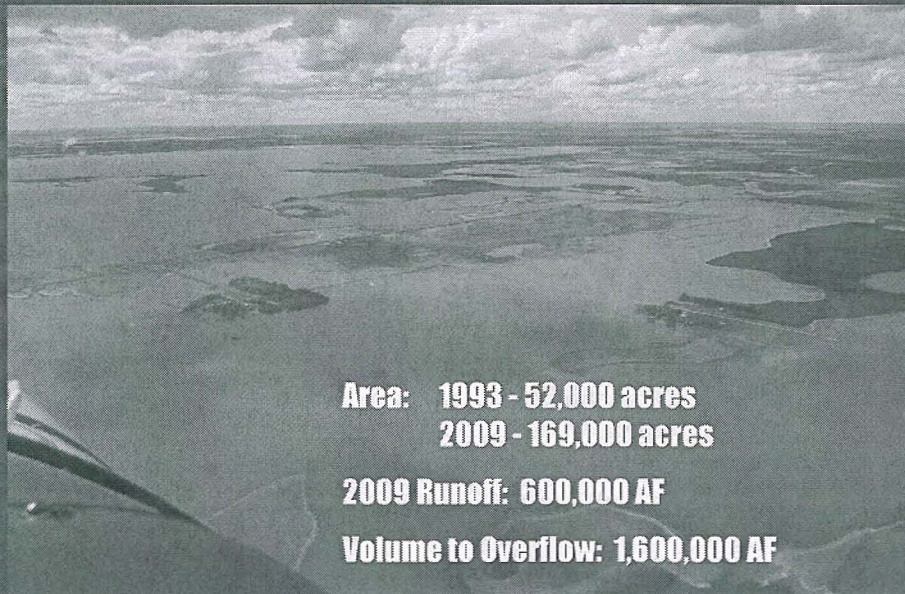


• Water delivery to Berthold, Minot's South Hill region, & N. Prairie RWD, 2008

• Kenmare-Upper Souris and Mohall-All Seasons, 2009

• Court Update:
 Aug 13 - Our Submittal
 Sep 28 - Manitoba Responds
 Oct 28 - Our Rebuttal
 Oral Arguments in D.C.

Devils Lake

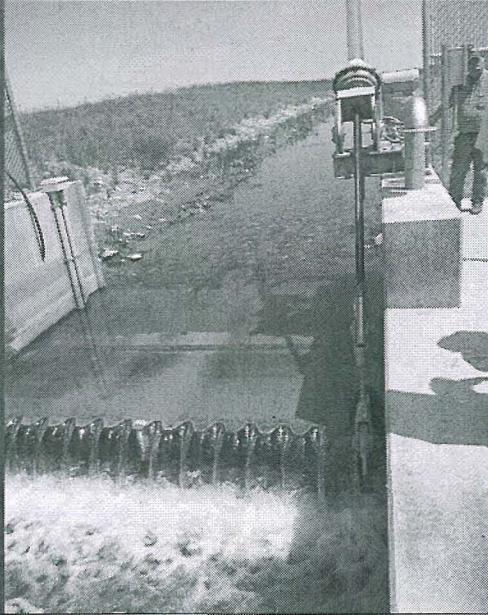


Area: 1993 - 52,000 acres
 2009 - 169,000 acres

2009 Runoff: 600,000 AF

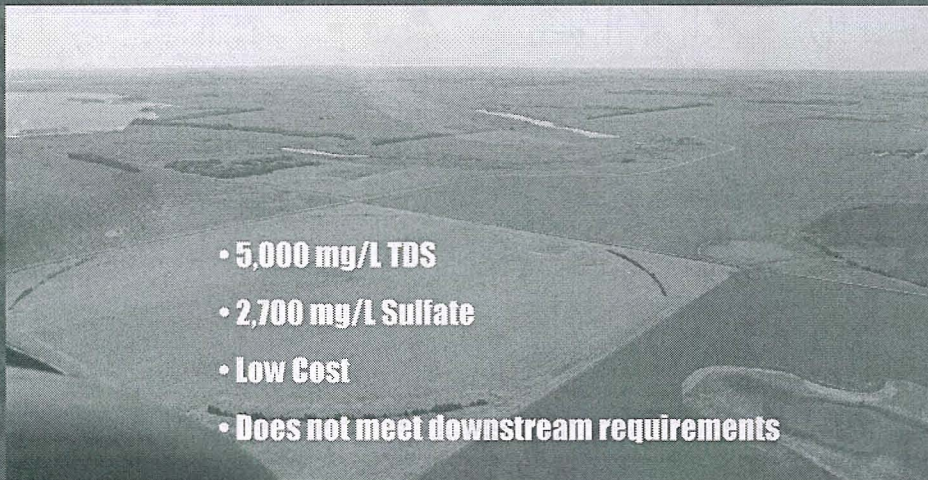
Volume to Overflow: 1,600,000 AF

Devils Lake Outlet



- Operational since 2005
- NDPES Permit, 2003 & 2008
- NDPES Permit withdrawn, 2009
- 2009 Pumpage:
25,000 to 30,000 AF
- Under Consideration:
 - Capacity Increase from
100 cfs to 250 cfs
 - Potential Dual Intake
Source

Tolna Coulee Outlet



- 5,000 mg/L TDS
- 2,700 mg/L Sulfate
- Low Cost
- Does not meet downstream requirements

Missouri River Management

- **New Master Manual - 2004**
 - Navigation Preclude Raised: 1775 - 1795
 - Modified Rule Curves: 1830 - 1795
 - Corps Given More Flexibility
 - MRRIC & MREBP Underway
- **Reservoir Update:**
 - Runoff into reservoirs remains above normal-
first time in nearly a decade
 - Oahe ended July at 1612.4; 18.5 ft. higher than 2008
 - Garrison ended July at 1842.2; 16.6 ft. higher than 2008

Sovereign Land Management

- **Enforcement Assistance - ND Game & Fish**
- **Oil, Northwest ND - State Land Dept.**

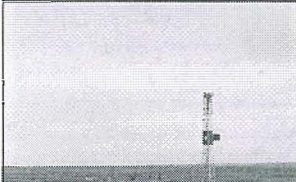
THE BISMARCK TRIBUNE

Water for Oil Development

- Availability

- Bakken drilling - 1 MG per well
- Non-Oil Shale - 50,000 to 100,000 Gal. per well
- ND Oil & Gas estimates 13,250 new wells by 2019

- Appeals & Hearings

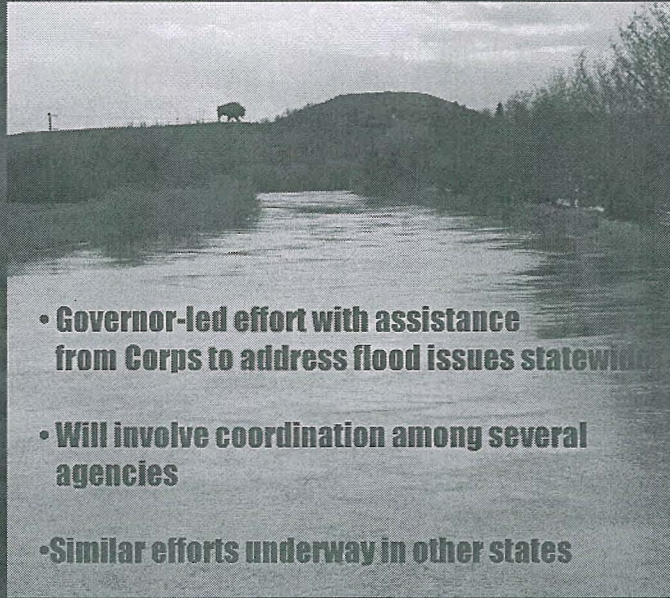


Emergency Response & Mitigation

- Staff provided 24-7 tech assistance during spring flooding
- Flood damage repair efforts - Cottonwood Cr., Clausen Sp., etc.
- Livestock Water Supply Program
- Ring Dikes



Multi-Agency Flood Task Force



- Governor-led effort with assistance from Corps to address flood issues statewide
- Will involve coordination among several agencies
- Similar efforts underway in other states

2009-2011 SWC Project Revenues & Needs

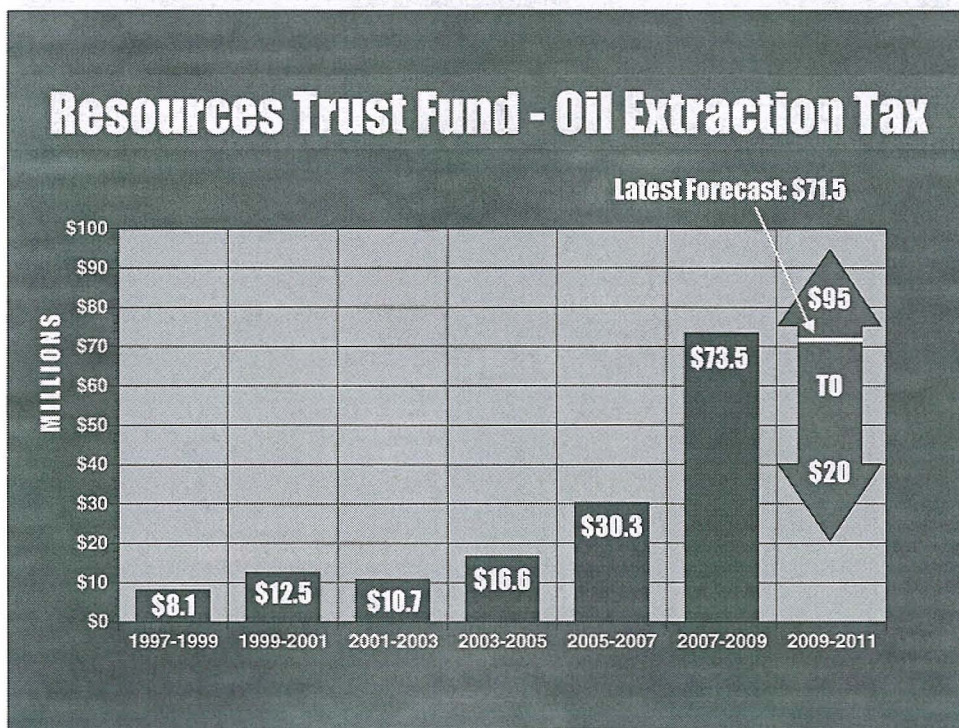
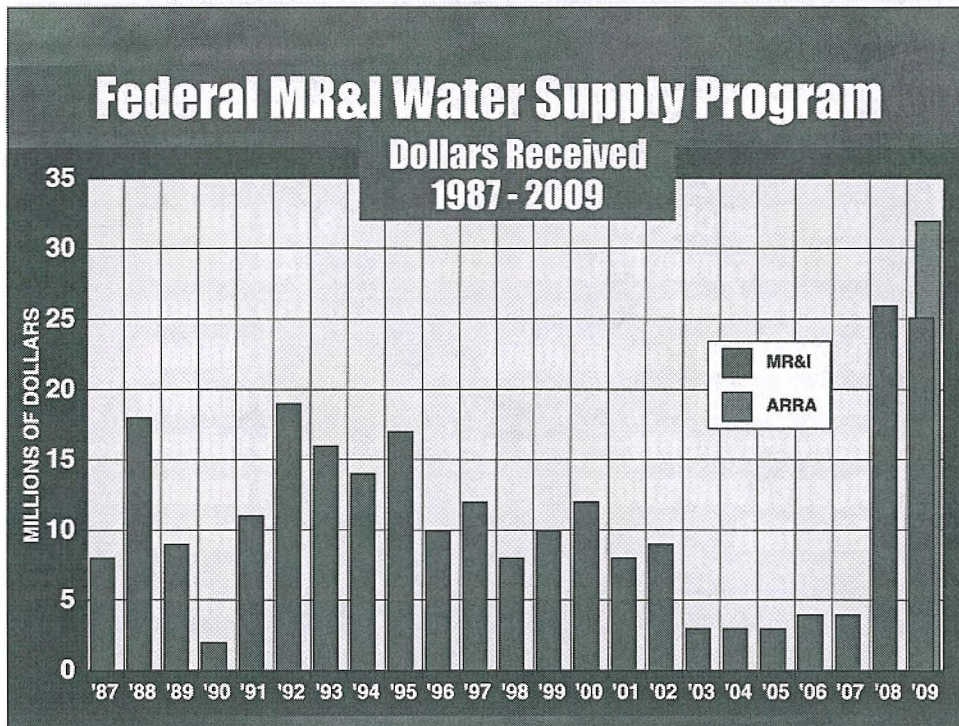
REVENUES

2009-2011 Resources Trust Fund Revenue Projection	\$ 74 M
2009-2011 Water Devel. Trust Fund Revenue Projection	\$ 20 M
2007-2009 Uncommitted Carry Over Contract Fund	\$ 59.5 M
	\$ 153.5 M

LESS BOND PAYMENTS

2009-2011 Bond Payments	\$ 17 M
August 2011 Bond Payment	\$ 8.5 M
	\$ 25.5 M

2009-2011 NEW PROJECT FUNDS	\$ 128 M
------------------------------------	-----------------



2009-2011 Budget Summary

New Projects - state	\$ 128 million
Old/Carryover Projects - state	49 million
Federal Funds	55 million
Other Local Contributions	6 million
Minot - NAWS	20 million
Bond Payments	25 million
Agency Operations	21 million
Shortfall	7 million
<hr/>	
	\$ 311 million

