

**Budget Section**  
**Senator Tony Grindberg, Chairman**  
**December 13, 2011**

---

Department of Corrections and Rehabilitation

**NDSP Building Project**

Project Budget - \$64 million

Project Expenditures as of 11/30/11 – \$25.2 million

Significant Completion Date – December, 2012 (Demolition of East Cell House and West Security Fencing to be completed in Spring of 2013)

**Project Scope:**

New Administrative Segregation Unit – 108 Beds

New General Housing Unit – 180 Beds

New Intake / Orientation Unit – 120 Beds

New Medical Unit – 23 Beds

New NDSP Entrance / DOCR Administration Bldg.

New NDSP Warehouse

New South Guard Tower

New Security Fencing

**Building Demolition:**

East Cell House

DOCR Administration Bldg

NDSP Warehouse

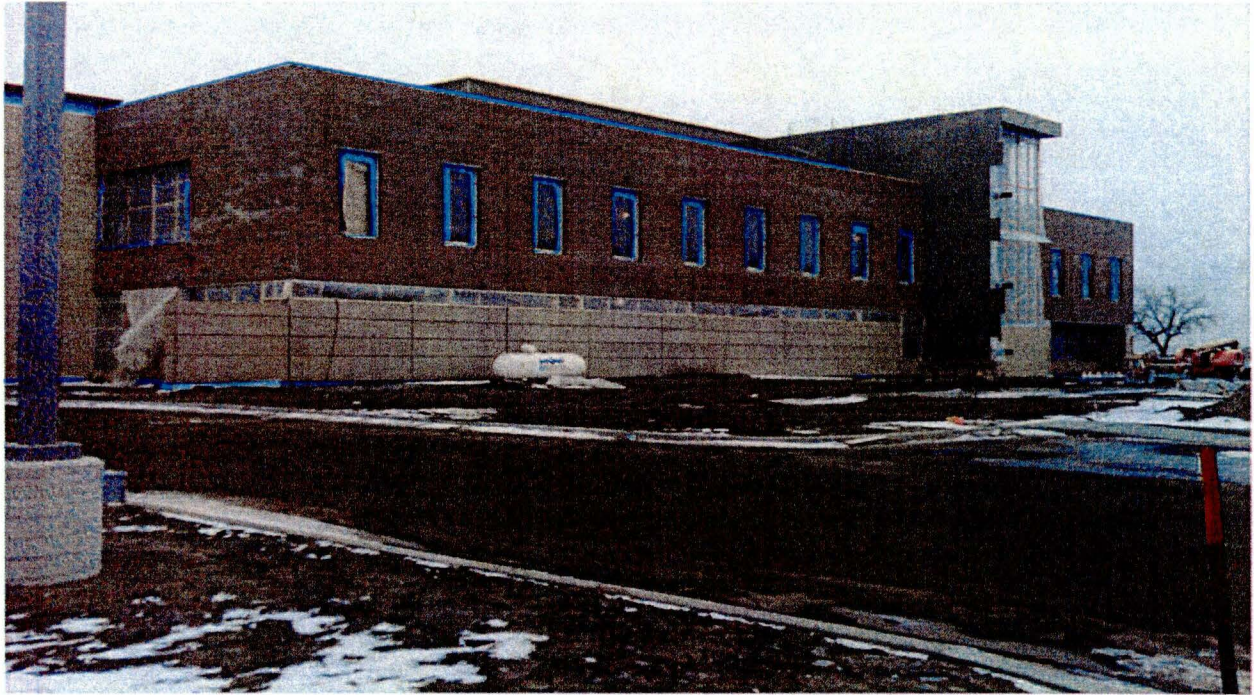
Warden's Residence

Deputy Warden's Residence

**Project Status:**

Approximately 35% Complete

Remains On Budget / On Time

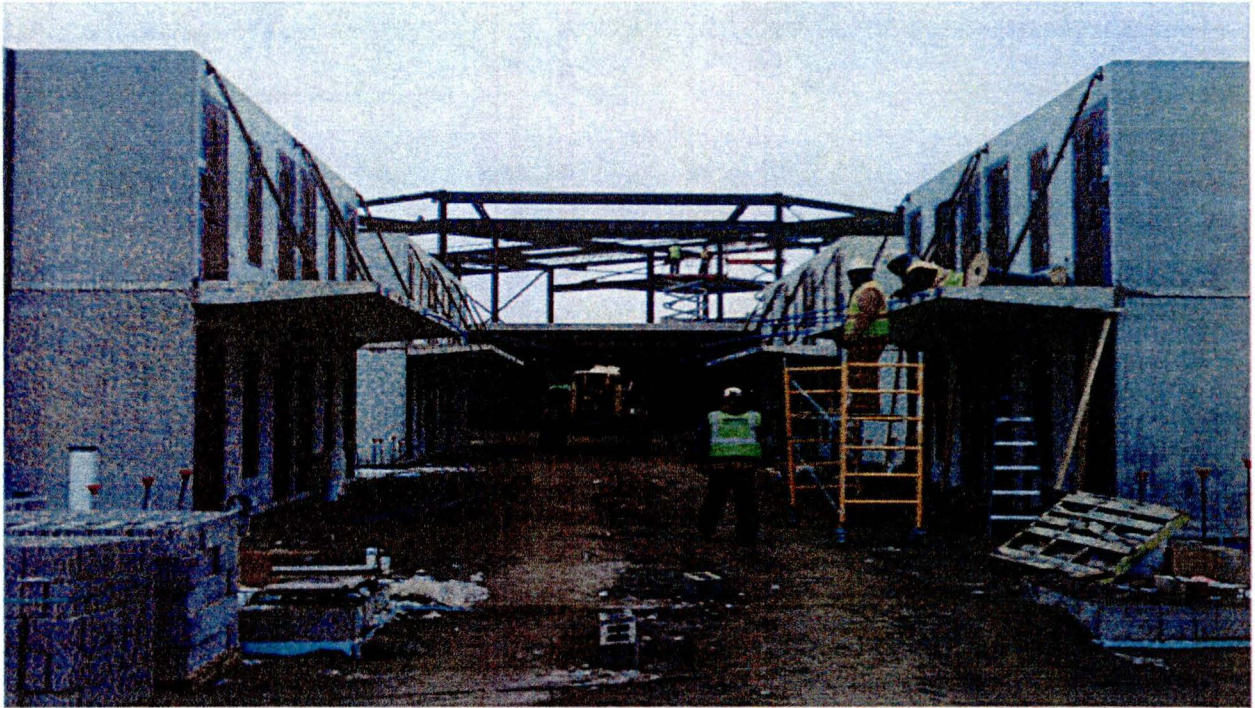


North Dakota State Penitentiary Entrance / DOCR Administration Bldg.



Precast Cell Houses (Looking NW – View from South Tower)





General Population Housing (Looking East – Interior View)



Orientation Housing (Looking SE – Interior View)





Medical Unit (Construction of Infirmary Cells)



Precast Cell Houses (Looking NW – Exterior View)





Setting Precast Cells (Looking West)