



# **Quick Pits LLC**

Setting the Standard for  
Modular Fluid Storage Systems

**January 2012**

# Overview / Background

## *Field Services to the Oil & Gas Industry*

### ➤ **Quick Pits LLC**

- Identified the need for better fluid storage containment systems
- Founded in 2010 to develop and manufacture modular fluid storage systems
- Funded engineering R&D, prototype development, testing
- 23 staff

### ➤ **Energy Services, Limited Liability Company**

- Founded in 2006 to provide roustabout services in CO
- Expanded into WV, PA, OH, OK, ND, WY, UT
- Current operations include containment, excavation and rig pad construction
- 180 staff



# Market Drivers

## *Creating Value With Engineered Solutions*

### ➤ **Water Resource Concerns**

- Supply water with less impact on local resources
- Avoid degradation of small watersheds and streams
- Safely store large quantities of potentially contaminated fluids for recycling or disposal

### ➤ **Operators' Drive for Efficiency**

- Enhance year-round operations
- Simplify integration of multiple complex systems
- Faster permitting, completion, reclamation

### ➤ **Surface Owner Requirements**

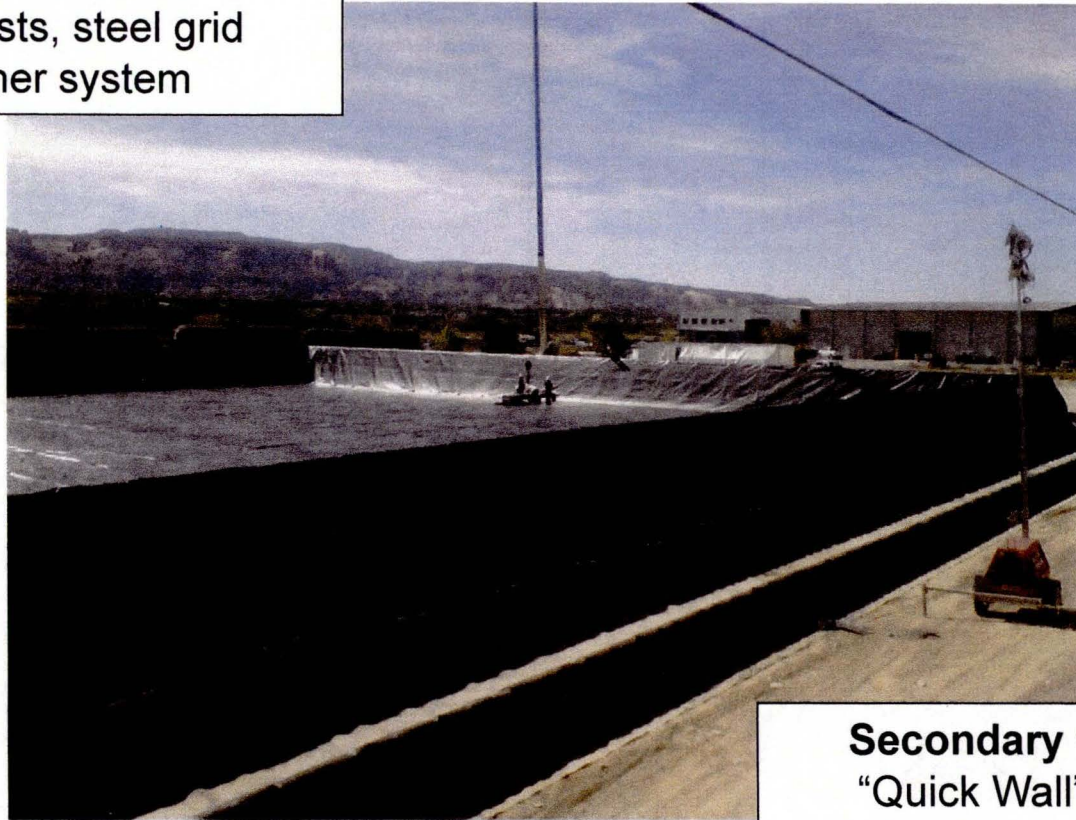
- Multiple land uses during development
- Reduce ground disturbance, and ground reclamation
- Enhance post production land use



# Quick-Pit System

## **Primary Containment**

Linked A-Frame barriers,  
corner ballasts, steel grid  
HDPE liner system

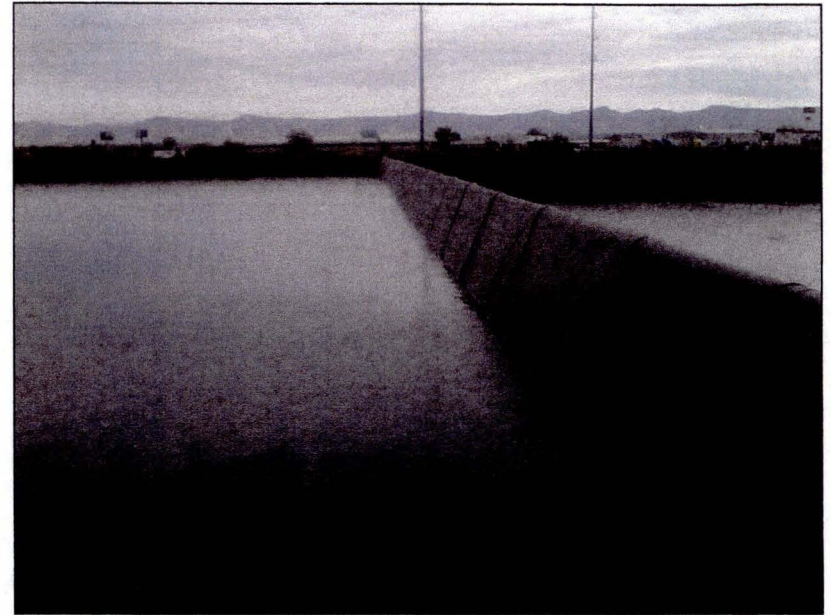
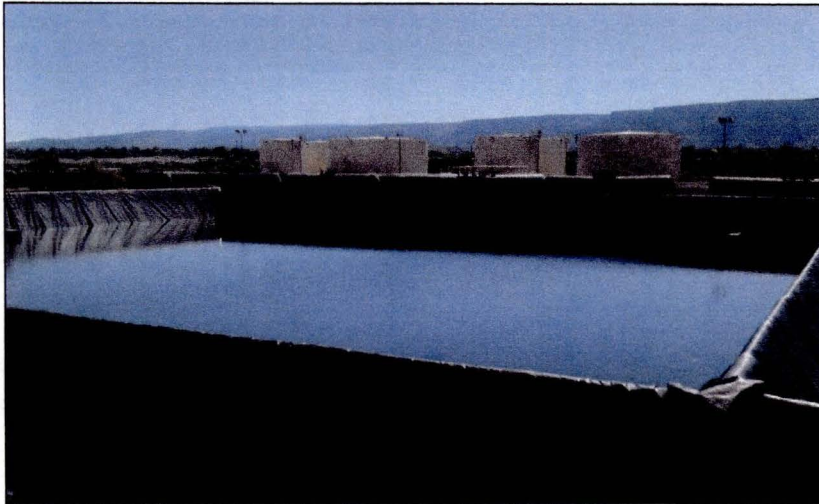


## **Secondary Containment**

“Quick Wall” ridge border  
“Microspike” HDPE liner  
Geotextile pad

# Quick-Pit System

- Suitable for frac fluids, fresh water, flow-back water, produced water and hydrocarbon liquids
- Sizes up to 1,000,000 bbls
- Configurable in multiple cells and shapes
- Designed for enhanced EHS
- Quick and easy assembly
- Multiple liners available

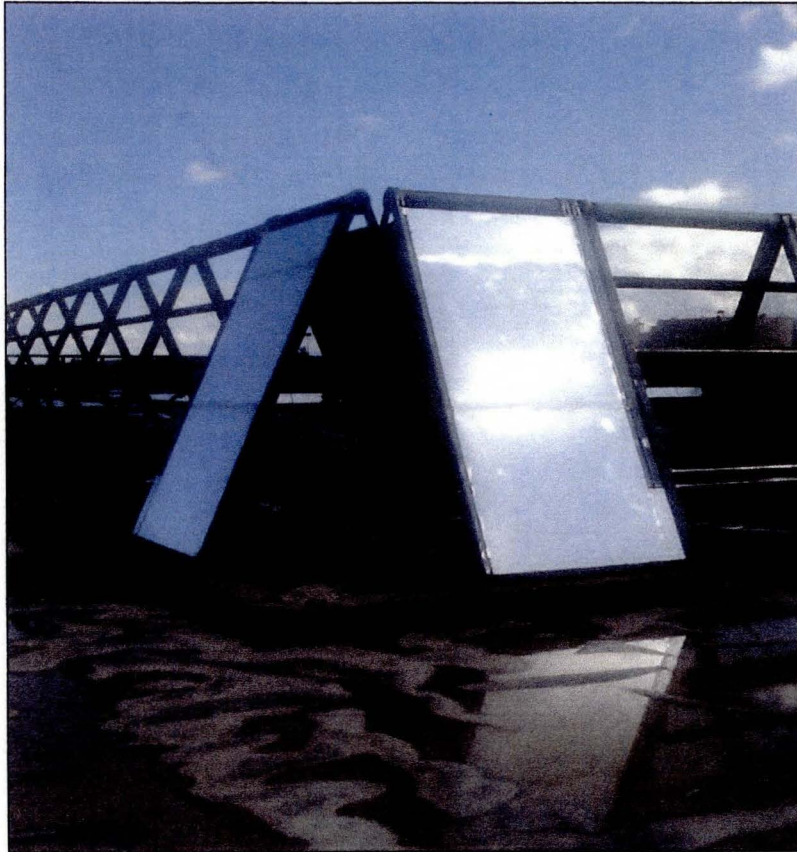


***Scale-able, modular fluid  
handling and storage solution  
for oil & gas developments***



# Quick-Pit System

*Rugged design for harsh operating environments*



## ➤ A-Frames

- 7'-6" wide x 10' tall assemblies
- Tubular steel, pipe, rod
- Linked together with grid

## ➤ Corners

- Pre-cast concrete construction
- Stationary ballasts to contain dynamic loads from the side walls

## ➤ Primary Containment Liner

- Reinforced plastic liner draped over the side walls and covering the grid

# Quick-Pit System

## *Easy Installation, Set-up*

- **“Quick Wall”**
  - Three foot patented wall system installed around the perimeter
  
- **Secondary Containment Liner**
  - “Microspike” HDPE sheeting underlying the primary containment and draped over the “Quick Wall” perimeter





# Quick-Pit System

## *Modular Construction*



### ➤ **“A-Frames”**

- Collapsible for easy transport, set up
- On-site rigging with fork lifts, skid steers

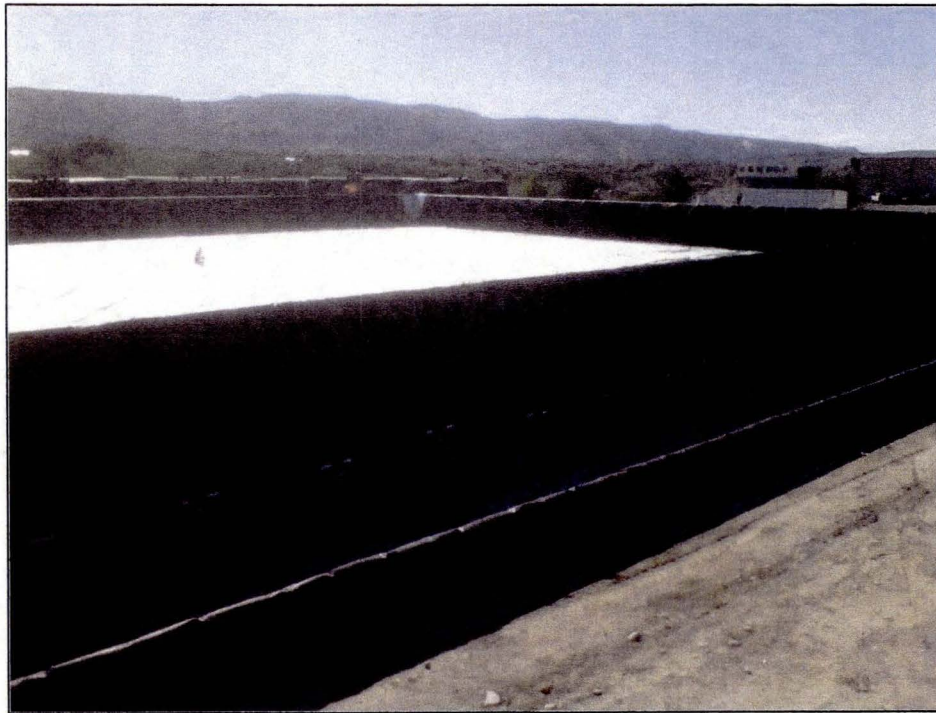
### ➤ **Grid System**

- Multiple configurations
- Simple assembly



# Additional Options

*Customized to Meet Operator's Needs*



- Heating System
- Monitoring System
- Alarms
- Vapor Recovery Blanket
- Insulated Blanket
- Evaporation Blanket
- Water Manifolds

# Manufacturing

- **Base unit**
  - 100,000 bbl storage system
- **2012 objective**
  - 100 units
- **Grand Junction**
  - Major commercial and transportation hub
  - Access to a skilled industrial workforce
- **Railroad Industrial Park**
  - Adequate shop floor space
  - Zoned for industrial activity
  - Adjacent to Interstate 70, UPRR
- **Manufacturing processes**
  - Training
  - Codes
  - Quality control
- **Next steps**
  - Expand production capability
  - Mobilize work force



# Installation and Maintenance

- Components packed and loaded for staged deliveries
- Transport via tractor/flatbed trailer
- Minimal site equipment required  
(fork lift, skid steer, work lights for round-the-clock operations)
- Minimal special tools required  
(plastic liner seam welder)
- Trained crews available for rig-up, rig-down, relocation
- Time for completion can be expedited to meet operators' needs

# Advantages

*Productivity gains, increased profitability*

## Benefits

- ✓ Less ground disturbance
- ✓ Less road traffic
- ✓ Simpler fluid hookups
- ✓ Reduced risk of undetectable fluid leaks, accidental discharges
- ✓ Smaller footprint
- ✓ Easy demobilization and site clean-up

## Savings

- ✓ Property damage payments
- ✓ Site prep cost
- ✓ Trucking costs
- ✓ No fencing
- ✓ Spill recovery
- ✓ Labor for pumping, fluid management
- ✓ Reclamation, clean up



# Commercial Arrangements

## *“Life Cycle Service”*

### ➤ **Pit Lease**

- Operator to provide site access, security, telecoms, cleared/graded pad, construction lay-down area
- Fixed lease term and rate
- Reservation & commitment fees
- Options and add-ons to be negotiated

### ➤ **Field Services**

- Term concurrent with lease
- Operator to provide continuing site access, pad sites
- Quick Pits to provide mobilization/demobilization
- Quick Pits to relocate as directed by Operator
- Cost of field services - unit rates, fixed price



# Management Team

- **Keri Gray** – Co-Founder and CEO – Majority owner of both Quick Pits as well as Energy Services
- **Allen Stein** – Co-Founder and CTO – Inventor of Quick-Pit, and has significant experience in large scale construction
- **Jimmie Williams** – CFO – Significant financial and managerial experience, and Co-Founder of Elm Capital
- **Eric Gadd** – Business Development – Significant business development and managerial experience in the energy sector
- **Monty Rutherford** – VP Production and Manufacturing – Significant experience in production and manufacturing facility design and operation