

Energy Development and Transmission Committee

August 18, 2011

9 a.m. ~ Roughrider Room, State Capitol

North Dakota Department of Transportation
Francis G. Ziegler, P.E., Director

Mr. Chairman and members of the committee, I'm Francis Ziegler, Director of the North Dakota Department of Transportation (DOT). Today we will discuss the following as requested by the committee:

1. Construction program information.
2. Road projects on the state system in western North Dakota.
3. Update on \$142 million oil impact funding.
4. Emergency Relief program.

Construction program information

- The DOT is moving forward on 280 projects totaling approximately \$532 million.
 - This includes Emergency Relief projects.
- Construction work continues to progress through challenging wet conditions and flooding. Some of the project work will extend into the 2012 construction season.
- As of August 15, approximately 28% of the work has been completed.

Road projects on the state system in oil producing counties in North Dakota

The Department is designing and constructing state highway projects designated for the \$228.6 million Extraordinary State Highway Maintenance fund.

- Approximately \$82 million for three projects from the \$228.6 million state funding for oil impact areas are under contract.
 - Currently working on the following projects:
 - ND 22 – Killdeer north to RP 119
 - ND 1806- North of Watford City to Tobacco Gardens
 - ND 8 – from ND 23 to Stanley
 - Planning and design work is progressing on projects for the remainder of the funding

Update on \$142 million oil impact funding

The NDDOT met several times this spring with local officials from the 17 oil producing counties and identified approximately 59 projects that will assist in repairing or restoring roads impacted by oil development.

- In June county officials and NDDOT officials reviewed the final list of road projects to be completed over the next two years.
- The counties worked hard to implement projects that will provide an integrated transportation system from county to county. County officials in North Dakota's oil and gas counties will manage contracts and oversee state-funded construction projects on 42 paved county and township roads and 17 unpaved roads.

- As of this week, the DOT has received county reimbursement requests totaling \$6.6 million for pavement projects.

Attachment A- County Oil Impact Project Chart

Emergency Relief program

A large number of Emergency Relief (ER) projects are underway throughout the state

- Approximately \$ 245 million in State ER projects (\$95 million 2011 and \$150 million in 2012) are planned for road work.
- Approximately \$42 million of that amount is for elevation grade raise projects in the Devils Lake region.
- **Overview of 2011 Emergency Relief Program (as of August 15, 2011).**
 - 90 total sites
 - Bismarck – 9
 - Valley City – 15
 - Devils Lake – 14
 - Minot – 17
 - Dickinson – 6
 - Grand Forks – 9
 - Williston – 7
 - Fargo – 13
 - 31 emergency grade raises
 - 34 permanent grade raises
 - 9 landslides
 - 16 other
- Additionally, \$66 million is scheduled for county projects.
- Total ER to date with state and county combined is approximately \$312 million.

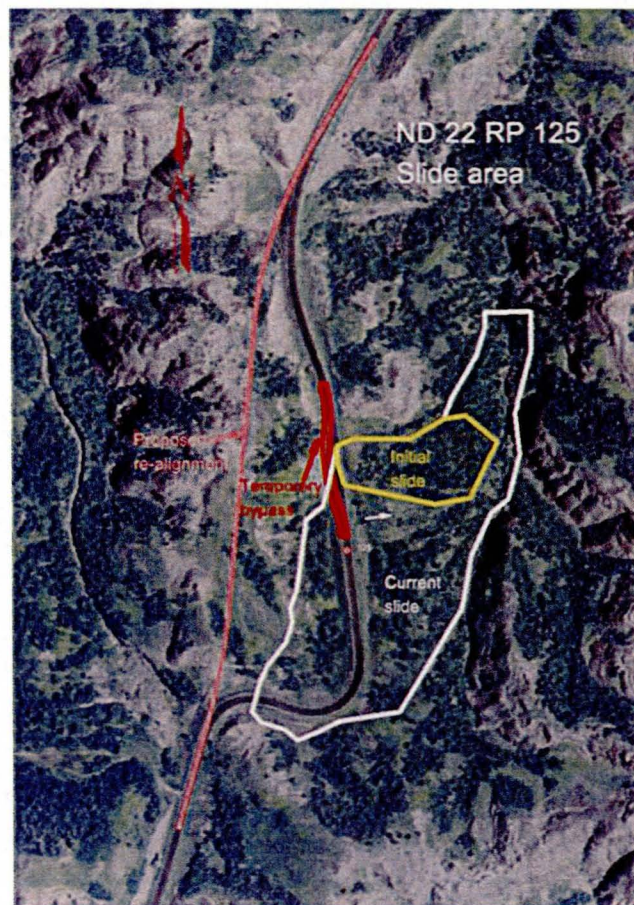
Attachment B- ER project sites on state system.

ND Highway 22 repair plans set for Killdeer area

DOT awarded a \$2 million contract the week of August 8 for work on ND Highway 22 north of Killdeer, with plans to begin work as soon as possible. The NDDOT's repair plans include relocating and realigning a segment of the roadway. The new segment of ND Highway 22 will be constructed for two lanes of traffic and is estimated to be opened in late fall or early winter, weather permitting.

- Due to the short time frame, a gravel surface will be in place through the winter until an asphalt surface can be constructed starting next spring.

Photo shows - Dickinson District Engineer, Larry Gangl, in landslide area on ND Highway 22 north of Killdeer July 2011.



This concludes my testimony, thank you for the opportunity to appear before the committee today.

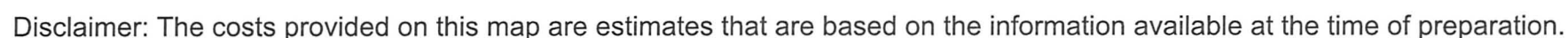
Attachment A

County Oil Impact Projects

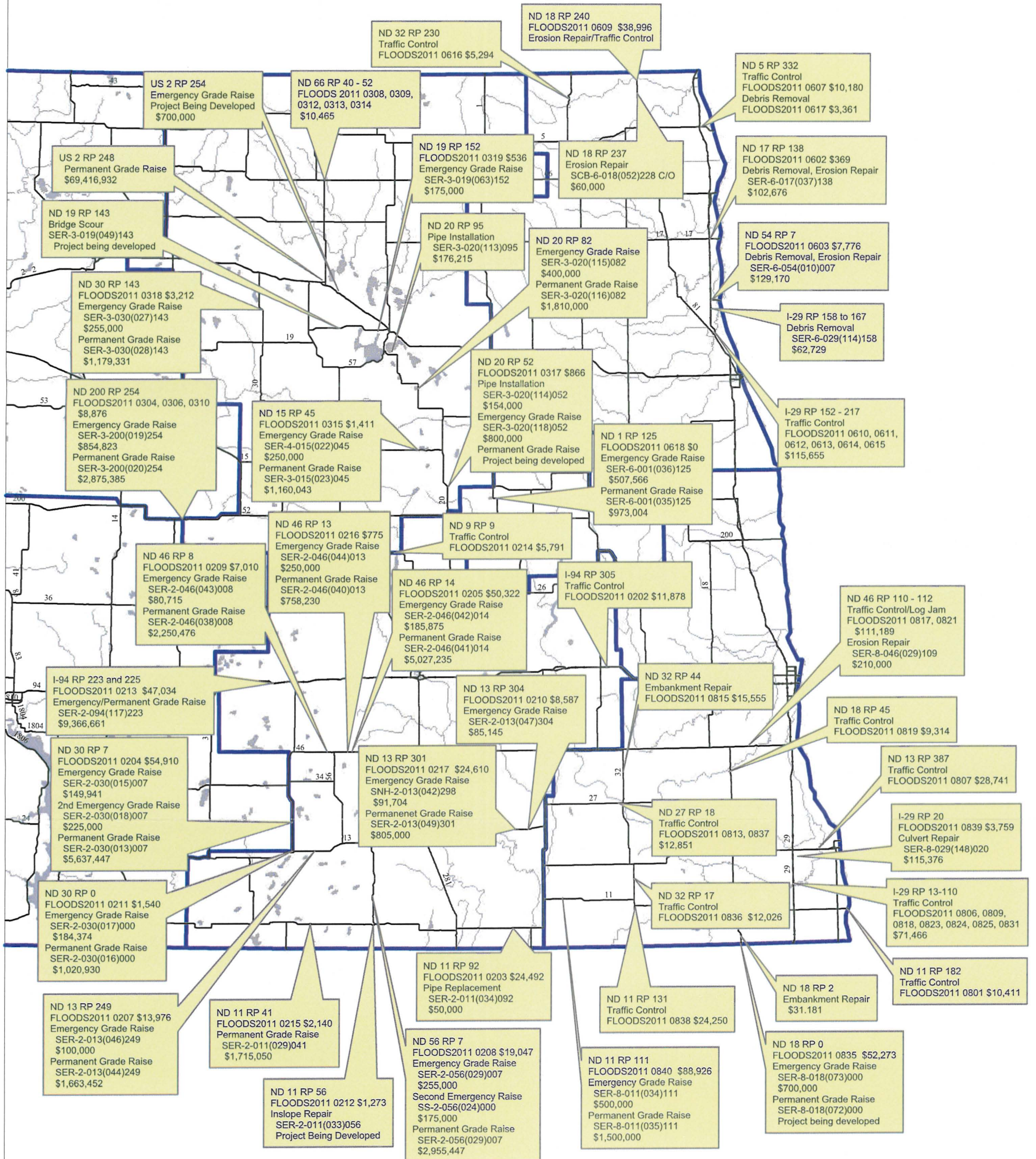
COUNTY	PROJECT	PCN	LOCATION	TYPE OF WORK
Billings				
	COI-0004(050)	19390	County Wide	Graveling
	COI-0432(052)	19391	1.5 miles north of Fryburg, East to County Line - Proj.1 - Hwy 10	Reset RCP, Mill & Overlay
Bottineau				
	COI-0506(054)	19392	Westhope, East to ND 14, Proj.2, CR-6	Overlay
	COI-0537(052)	19393	Souris, South, Proj.3, CR-37	HBP Overlay
	COI-0005(050)	19394	County Wide	Graveling
Bowman				
	COI-0006(050)	19395	County Wide	Graveling
	COI-0605(054)	19396	County Line, South, Proj.1, 172nd Ave	Armor Coat
	COI-0006(051)	19454	State Line N 10 mi on CMC 0619, 1.5 mi W on CMC 0615	Armor Coat
Burke				
	COI-0717(052)	19397	CMC 0717, Proj.1, CR-11	Mine and Blend, Overlay
	COI-0007(050)	19398	County Wide	Graveling
	COI-0716(053)	19399	CMC 0716, Proj.2, CR-7	Subgrade Repair, Overlay
Divide				
	COI-0012(050)	19400	County Wide	Graveling
	COI-1249(060)	19401	Noonan, South, Proj.1, CR-21	Aggregate base & HBP
	COI-1207(059)	19402	Alkabo, North & South, Proj.2, CR-5	HBP Overlay
Dunn				
	COI-0013(050)	19403	County Wide	Graveling
	COI-0013(051)	19404	from Dunn Center, north & east on CMC 1323, 1330 & 1329	HBP Overlay
	COI-1356(056)	19405	from ND 22, west	Widen base, HBP Overlay
	COI-1303(001)	19406	from ND 200, south to county line	HBP Overlay
	COI-1340(057)	19407	from ND 22, west	Widen base, HBP Overlay
Golden Valley				
	COI-0017(050)	19408	County Wide	Graveling
	COI-1728(054)	19409	Sentinel Butte, East to County Line	FDR & chip seal
	COI-1711(055)	19410	Sentinel Butte, North to I-94	Stabilized base & chip seal
McHenry				
	COI-0025(050)	19411	County Wide	Graveling
McKenzie				
	COI-2710(055)	19412	from ND 1806 to ND 23	Grade, widen, rehab
	COI-2716(058)	19413	from ND 85, west (length of proj. based on avail. Funds)	Grade, widen, rehab
	COI-0027(050)	19414	County Wide	Graveling
McLean				
	COI-0028(050)	19415	County Wide	Graveling
Mercer				
	COI-0029(050)	19416	County Wide	Graveling

COUNTY	PROJECT	PCN	LOCATION	TYPE OF WORK
Mountrail	COI-0031(050)	19417	County Wide	Graveling
	COI-SC-3131(054)	19368	Palermo, South (Mou1)	Grading, Widening, HBP
	COI-3119(052)	19418	Newtown, South	Grade, Subgrade prep, aggr, HBP, culverts
	COI-3115(053)	19419	from ND 1804 to US 2	Grade, Subgrade Prep, HBP
	COI-3126(053)	19420	from ND 8, East to CMC 3131	Grade, Subgrade Prep, HBP
	COI-0031(052)	19421	76th Ave NW, from ND 23 to Parshall Bay Road	Grade, subgrade prep, HBP, bridge widening
	COI-0031(051)	19422	Parshall Bay Road, from Parshall to Lake Sak.	HBP overlay, seal coat, patching
	COI-3114(053)	19423	Stanley Spur	HBP overlay, seal coat
Renville	COI-3836(054)	19424	Glenburn, East	Shoulder widening, HBp
	COI-3828(053)	19425	Grano, W	??
	COI-3823(055)	19426	Mohall, South	HBP Overlay
	COI-0038(050)	19427	County Wide	Graveling
Slope	COI-0044(050)	19428	County Wide	Graveling
Stark	COI-4510(062)	19429	from County Line, East to CMC 4511	Widening, aggr base, HBP
	COI-0045(050)	19430	County Wide	Graveling
	COI-0045(051)	19431	from I-94 South 1 mi on CMC 4511, then east 5 mi on CMC4510	HBP, aggr shoulders
Ward	COI-0051(050)	19432	County Wide	Graveling
	COI-0051(051)	19433	County 9 from ND 23 North to CMC 5144 (on CMC 5119,5154 & 5123)	HBP
	COI-5144(055)	19434	from CMC 5123, East to County 11	HBP
	COI-0051(052)	19435	County 17, from CMC 5144 (CR 14) to US 2/52	HBP
Williams	COI-0053(050)	19436	County Wide - unpaved allocation	Graveling
	COI-5303(002)	19437	Need project location info and length	new project
	COI-5351(055)	19438	Proj.5 - ND 1804, north - 53-151-30.0	Grade, HBP Overlay, Culverts
	COI-5328(055)	19439	Proj.1 - US 85/2, east 12.5 miles then north 2 miles to Epping - 53-122-27.0	HBP Overlay, Structure
	COI-5316(054)	19440	Proj.2 - US 85, west to CMC 5305	Overlay
	COI-5333(056)	19442	Proj.8 - ND 1804, south	Rebuild & Overlay
	COI-5333(055)	19443	US 2, north	Overlay
	COI-0053(051)	19444	Proj.7 - Williston west frontage road	Patch & Overlay
	COI-5328(056)	19445	Proj.4 - ND 1804, southeast	Patch & Overlay
	COI-5351(054)	19446	Proj.3 - ND 50, north	Overlay
	COI-5303(001)	19441	Buford, south to Fort Buford Historic Site	Patch & Overlay

8/15/2011



Attachment B
2011 EAST ER Sites
8/15/2011



Disclaimer: The costs provided on this map are estimates that are based on the information available at the time of preparation.