

Recent Projects

- Generation Additions Completed

– Culbertson (MT)	100 MW	2010
– Dry Fork (WY)	435 MW	2011
– Deer Creek (SD)	300 MW	2012

Recent Projects (cont.)

- **Generation Additions Under Construction**
 - **Pioneer Generation Station Phase I**
 - Near Williston
 - 45 MW Simple Cycle Combustion Turbine w/ clutch
 - Clutches allow the generator to be disconnected from the turbine and spin freely providing reactive power which increases grid reliability
 - Started Construction June 2012/ Commercial July 2013
 - **Lonesome Creek Station Phase I**
 - Near Alexander
 - 45 MW Simple Cycle Combustion Turbine w/ Clutch
 - Started Construction July 2012/ Commercial July 2013



Future Generation Projects

- **Pioneer Generation Station Phase II**
 - Addition of two 45 MW Simple Cycle Combustion Turbines
 - Major Source Permitting
 - Commercial Operation Date – July 2014
- **Lonesome Creek Phase II**
 - Addition of two 45 MW Simple Cycle Combustion Turbines
 - Major Source Permitting
 - Commercial Operation Date – July 2015



Recent Projects (con't.)

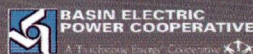
- **Transmission**

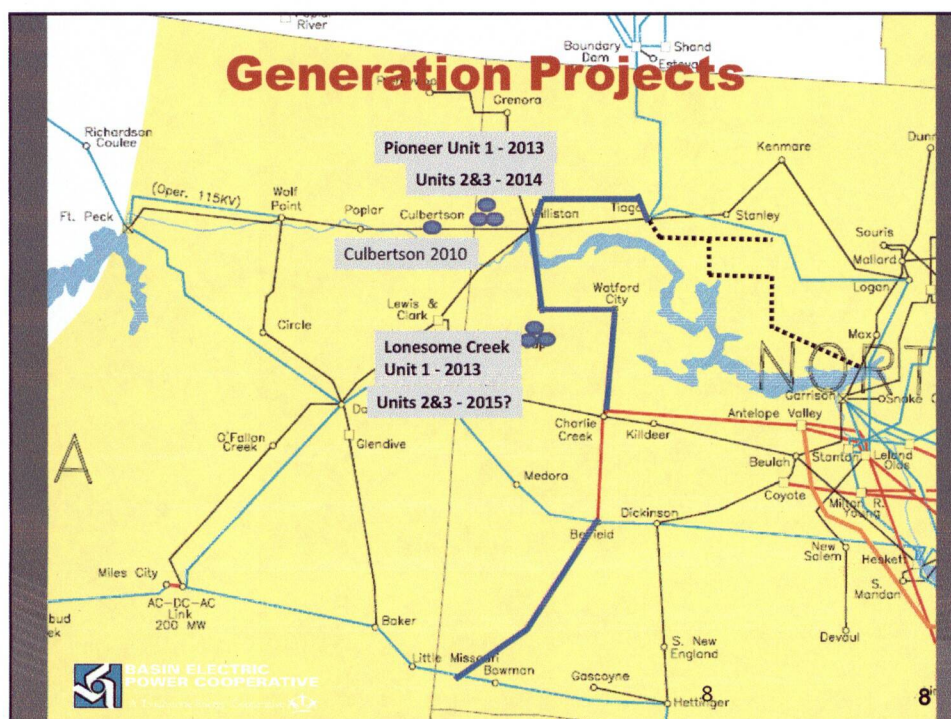
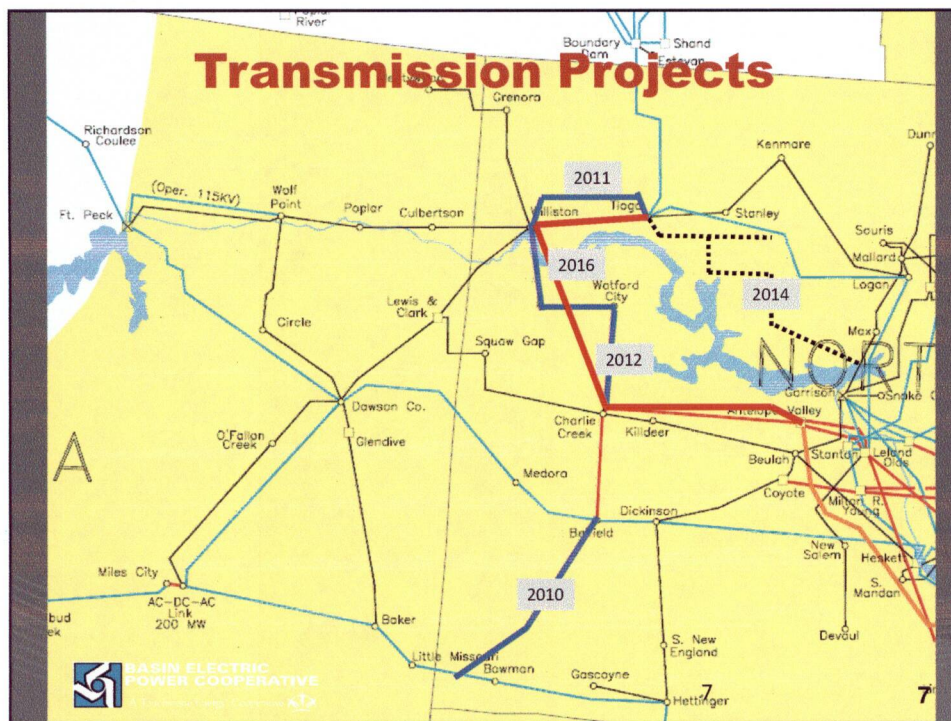
- | | |
|--|----------------|
| – Belfield to Rhame (Basin) | 230-kV in 2010 |
| – Williston To Tioga (Basin) | 230-kV in 2011 |
| – Charlie Creek to Williston
(WAPA Upgrade) | 230-kV in 2012 |

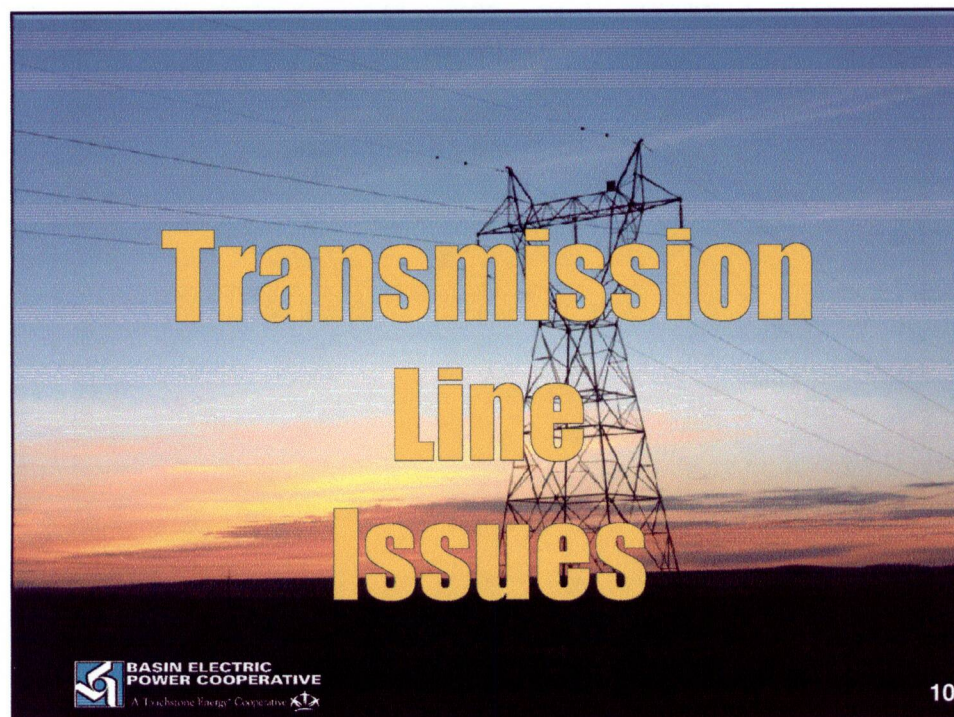
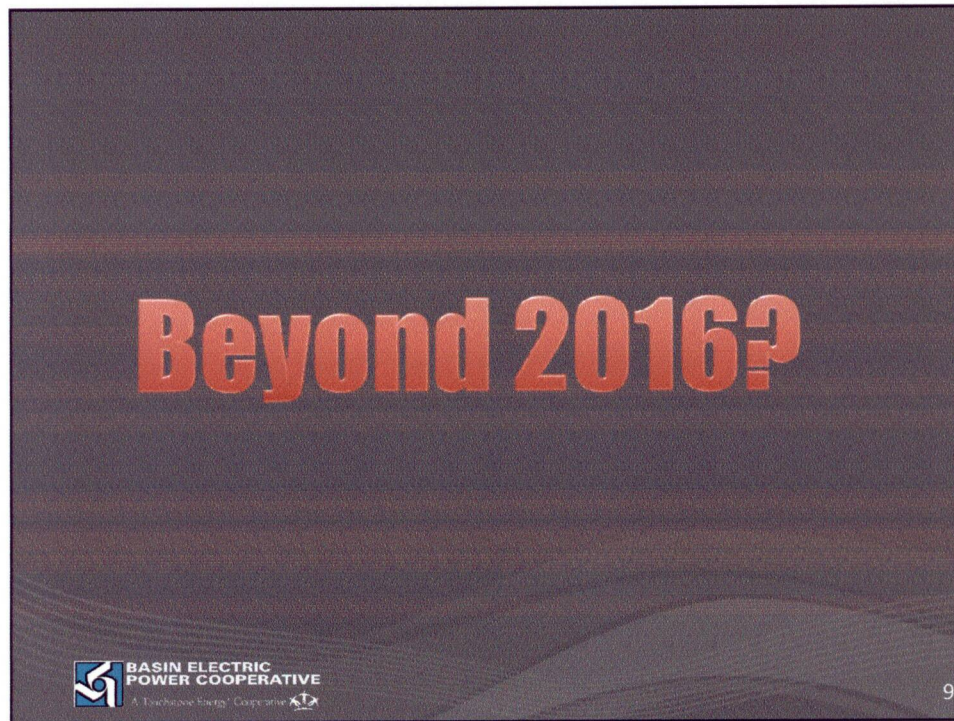


Future Transmission Projects

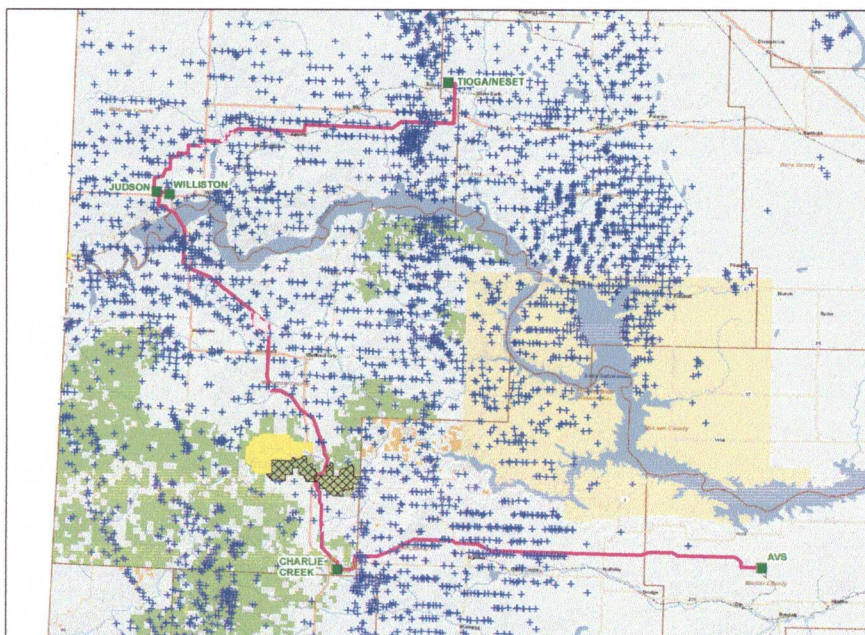
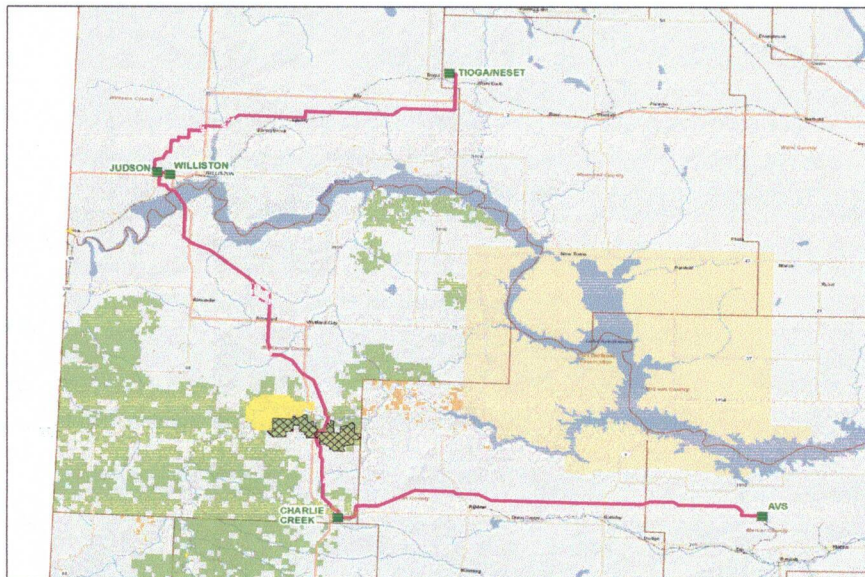
- **AVS to Tioga 345-kV Transmission Project**
 - 200 Miles
 - Anticipate PSC Siting Application 1st Qtr. 2013
 - Est. Construction Start 2014
 - Est. In-Service Date 2016







Preferred Route



Landowner Issues

- **Already have too many easements.**
 - Oil rigs, pipelines, roads, power lines, communications towers, compressor stations, substations, man camps, etc
- **Farming Operation Impact**
- **Lack of Future Development Options**
- **Prior issues with utilities**
 - Gates not closed, rutting during wet conditions, weeds, etc.



13

Landowner Issues Cont.

- **Line benefits oil development only**
 - Generally surface only owners
- **Too close to my residence**
 - ND Statute states lines be 500 feet from an inhabited residence unless waived in writing.
- **Line placement “Somewhere else” – NIMBY**
- **Annual Payment Requests**



14

Utility Issues

- **Rapid Pace Of Land Changes**
 - Ownership
 - Development
 - Oil Wells, Pipelines, Business
 - Purpose
 - Residential, Commercial, Multi-family
- **In terms of land development, “a week in Williston is a lifetime anywhere else”**



Questions

