

# ND Statewide Longitudinal Data System

Education and Workforce  
October 18, 2012

## SLDS Training

The ND Lead Center is providing the training for the SLDS project. Training began in April 2012 and is ongoing.

### Content:

Navigation of the site.

ND State Assessment Results

District Reports: Drop-out Rate, Graduation Rate, Profile, ACT Results, Developmental Courses, etc.

### Train the Trainer Model

#### recommended Team Members:

Secondary Principal, Elementary Principal, Technology Person, School Improvement Team or Leader

## State Longitudinal Data Systems (SLDS) Training

We are excited to assist with the **rolling out** of the new **State Longitudinal Data System (SLDS)** this fall, and want you to be aware of training opportunities on how to use it. We will be conducting a **series of free half day workshops** around the state, where we will cover basic information about the source of the data, FERPA as related to SLDS, access to your data, and how to view, drill down, and export the reports available.

The model we are using is "**train the trainer**," and because we hope to get all schools on-line, we are limited to the number of participants from each school district. We want school districts to **send up to four people**, and we hope to have data users and leaders at the secondary and elementary levels as a part of the team. (This need for technical people is not as important as people who actually use the data, or lead the school in the use of the data. You should have a principal as a team member.)

If you have gone through this training during the spring of 2012, there is no need to attend again. If you would like to attend again, feel free to do so.

The training will be conducted in **half day sessions running from 8:00-11:30 and 12:30-4:00** and we will have a **limited number of slots**, so we will close the sessions once they are full and will fill them on a **first come, first serve basis**. We will conduct more sessions if needed later in the year.

Workshops will be held on a regional basis, at a location in each REA, as well as two preschool state-wide sessions, one in the east and one in the west, open to anyone.

September 17 – **Bismarck** – AM & PM sessions (MREC) Bismarck – BSC - Energy Center – 1200 Schafer Street

September 18 – **Dickinson** – AM & PM sessions (RESP) Dickinson – Strom Center - (off DSU Campus) – 1679 6th Avenue West

October 22 – **Bottineau** – AM & PM sessions (NCEC) Bottineau Area – Lake Metigoshe–Metigoshe Ministries–10605 Lake Loop Rd East

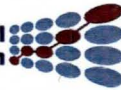
October 23 – **Minot** – AM & PM sessions (MDEC) Minot – Public Schools Annex Building – 628 17th Avenue SE, Door #2 on the North side of the building

October 24 – **Jamestown** – AM & PM sessions (SEEC) Jamestown – Middle School – Thompson Room – 203 2nd Avenue SE

October 25 – **Fargo** – AM & PM sessions (SEEC) Agassiz School/South Campus II – 1305 9th Avenue South – PD Room 132

October 29 – **Williston** – AM & PM sessions (GNWEC) Williston – State College – 1410 University Avenue – Western Star CTE, Room 112A





State	
Name	Description
State Dashboard	Statewide enrollments by school year and NDSA results
Transportation	Any districts transportation information reported to DPI
District	
Name	Description
Assessment Details	Assessment summary by school year, assessment, subject and proficiency level. Shows results by student counts and demographics.
Assessment Inventory	An inventory listing of all assessments available in the SLDS by school year and school.
District AIMS Class Distribution	AIMS Class Distribution Report
District AIMS Subject Comparison	AIMS Subject comparison
District Assessment Summary Access	A Districts assessment summary for Access allows users to drill to district assessment details by assessment subject to allow for filtering on program and student demographics.
District Assessment Summary	A Districts assessment summary information selectable by assessment and subject area (NDSA, ACT, MAP, AimsWeb). Drills to district assessment details by assessment subject to allow for filtering on program and student demographics.
District Course Code Evaluation	Course code comparison for a selected District, School, Year and Code Status. This report allows you to compare your local and state course codes for discrepancies, thus allowing users the ability to review codes and align accordingly
District Dropout Rate	A District's dropout rate, compared to the State's overall dropout rates. 4-year cohort as reported to EdFacts.
District Graduation Rates	Graduation rates for each high school within the selected district. These numbers are derived from EdFacts.
District Proficiency Trend	A District's percent of students who are at or above proficient levels, separated by Subject area.
District Profile	An overall profile status for the selected district.
District State and National ACT Benchmark	Compare District, State and National ACT college readiness.
NWEA Teacher Report	A listing of students per teacher and class that gives the NWEA test information consisting of RIT ranges and goal descriptors.
Student Mismatched Information	A listing of students that have mismatched information between the Stars and PowerSchool application. Additionally, fields that need to be filled in within the application are displayed as well.
School	
Name	Description
ACT Student Detail	Student composite and subject score ACT results for a selected school year, school and grade enrolled. Displays latest test score taken by the student for the selected school year. Drills to details.
ACT Summary	District and School composite and subject score ACT results for a selected school year, school and grade enrolled.
NDSA Growth Model Roster	NDSA Growth Model Roster
NDSA Growth Model	An individual student NDSA growth model
School Assessment Summary	A Schools assessment summary information selectable by assessment and subject area (NDSA, ACT, MAP, AimsWeb). Drills to school assessment details by assessment subject to allow for filtering on program and student demographics.
School Profile	An overview of a schools enrollment, attendance, YTD absence and latest NDSA results for the current enrolled student population
Student Proficiency Details	Displays student proficiency details selectable by school year, grade, school, proficiency level, and student demographics.
Student	
Name	Description
Student Directory	Search district directory to find a student and drill to the Student Profile to display current and historical course schedules, program participation, assessments and course grades.
Postsecondary Feedback	
Name	Description
Developmental Courses By Subject Area	A Districts PostSecondary enrollment in Developmental Courses, broken out by course subject. Shows totals for high school graduating classes who are enrolled at an NDUS campus.
District Developmental Courses	A Districts PostSecondary enrollment in Developmental Courses. Shows totals for high school graduating classes who are enrolled at an NDUS campus.
NDUS Student Directory	A listing of 10th and 11th grade student directory information to be shared with NDUS. By state statute this data must be shared with NDUS. This report is NOT being sent to NDUS and is provided to the district for feedback on using the SLDS

# REA REPORTS

# REA ACT Summary

Actions



1 of 3 ?

Find Next

Document Map

ND REA ACT Summary

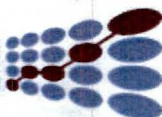
By School

By Gender

By Race

By FRL

## Statewide Longitudinal Data System

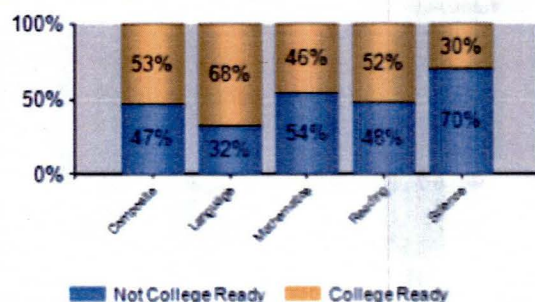


## ND ACT Summary By REA

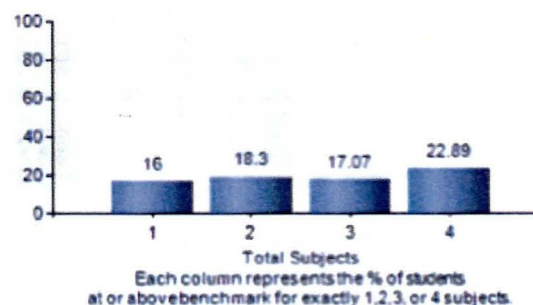
Parameters: District (Missouri River Ed Cooperative)

School Year (11-12,10-11,09-10,08-09)

% of Students in Each Subject



% Reached At or Above Benchmark



School Year	REA Name	REA School Size Name	Number of Students Tested	Composite	Language	Mathematics	Reading	Science
2008-2009	Missouri River Ed Cooperative	Missouri River Ed Cooperative: Districts Under 500 Enrollment	200	20.93	19.90	20.91	21.28	21.13
		Missouri River Ed Cooperative: Beulah 27	51	21.08	20.86	21.25	20.67	21.06
		Missouri River Ed Cooperative: Bismarck 1	594	22.18	21.69	21.81	22.66	22.04
		Missouri River Ed Cooperative: Hazen 3	53	22.06	20.70	22.09	22.57	21.98
		Missouri River Ed Cooperative: Mandan 1	95	22.33	21.85	21.96	22.68	21.89
	REA Total		993	21.88	21.25	21.63	22.27	21.79



# REA State And National ACT Benchmark

Actions



1

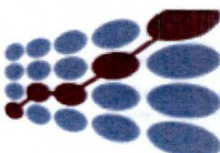
of 1



Find Next



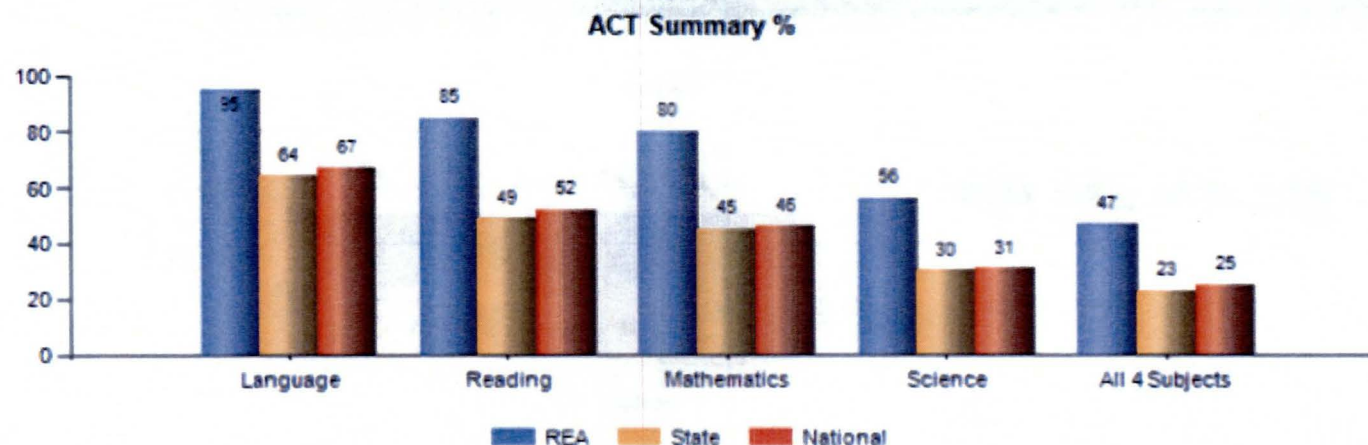
## Statewide Longitudinal Data System



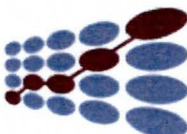
ND\_REA\_ACT\_State\_National\_Percentages.rdl

Year : 11-12 District : South East Ed Cooperative

Benchmarks [Composite: 21] [Language: 18] [Math: 22] [Reading: 21] [Science: 24]



Level	Subject	Total Students(CollegeReady)	Percentage
☐ REA	All 4 Subjects	232	46.77
	Language	470	94.76
	Mathematics	395	79.64
	Reading	420	84.68
	Science	278	56.05
☐ State		1,586	23
☐ National		416,504	25



## REA

## South East Ed Cooperative

Year	Enrolled	Developmental	Pct	BSC01	MISUB	DSU01	LRSC1	MASU1	MISU1	NDSCS	NDSU1	UND01	VCSU1	WSC01
2007-2008	1,138	115	10.1%	19	4	0	2	8	2	22	44	7	8	0
2008-2009	1,061	130	12.3%	18	1	0	1	6	0	33	60	8	3	0
2009-2010	1,066	270	25.3%	27	3	2	3	6	1	124	71	10	21	2
2010-2011	1,118	246	22.0%	24	6	0	9	6	0	121	52	8	18	2
2011-2012	1,005	229	22.8%	24	5	2	8	2	3	108	52	7	19	0
Totals	5,388	990	18.4%	112	19	4	23	28	6	408	279	40	69	4

\* GED graduates and Home School students are not included in this report.

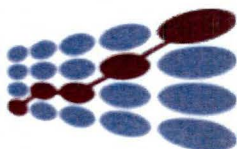
## NDUS Institution Abbreviations

Abbreviation	NDUS Institution Name	Abbreviation	NDUS Institution Name
BSC01	Bismarck State College	NDSCS	North Dakota State College Of Science
MISUB	Dakota College At Bottineau	NDSU1	North Dakota State University
DSU01	Dickinson State University	UND01	University Of North Dakota
LRSC1	Lake Region State College	VCSU1	Valley City State University
MASU1	Mayville State University	WSC01	Williston State College
MISU1	Minot State University		

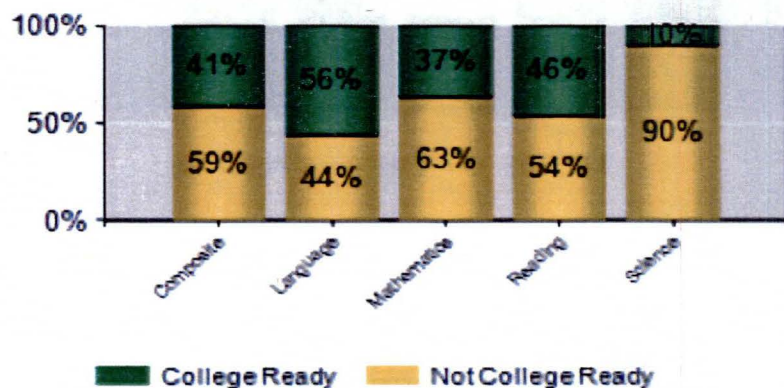
# **DISTRICT REPORTS**



## Statewide Longitudinal Data System



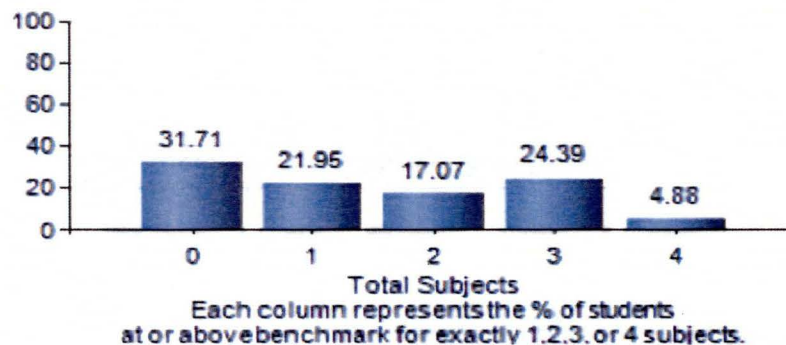
% of Students in Each Subject



## ND ACT Summary

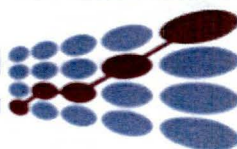
Parameters: District [redacted]  
School Year (10-11)

% Reached At or Above Benchmark

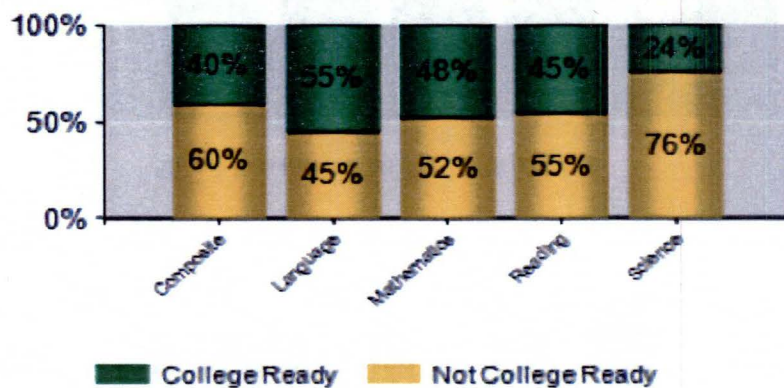


13 out of 41 Students did not pass any subject areas

## Statewide Longitudinal Data System



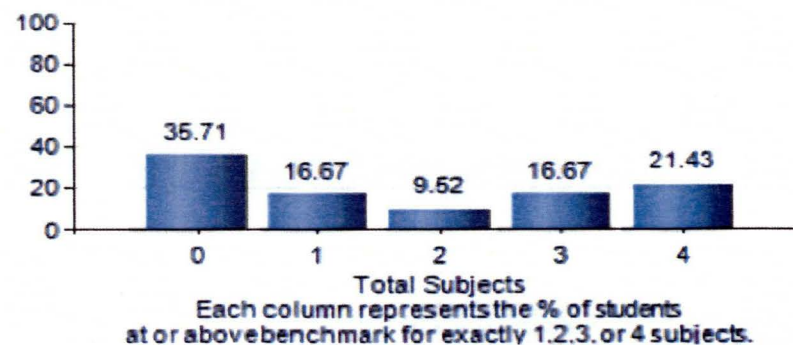
% of Students in Each Subject



## ND ACT Summary

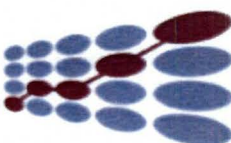
Parameters: District [redacted]  
School Year (10-11)

% Reached At or Above Benchmark

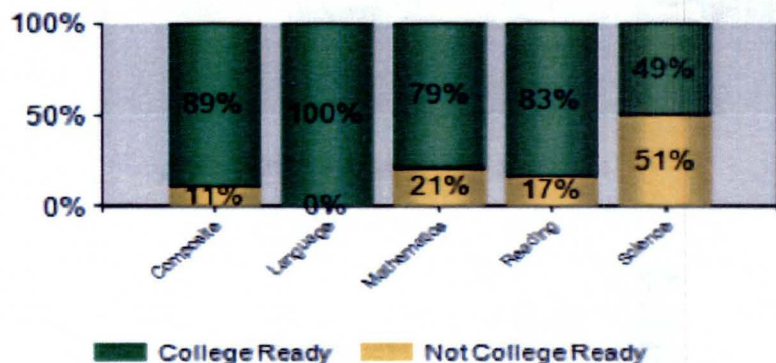


15 out of 42 Students did not pass any subject areas

## Statewide Longitudinal Data System



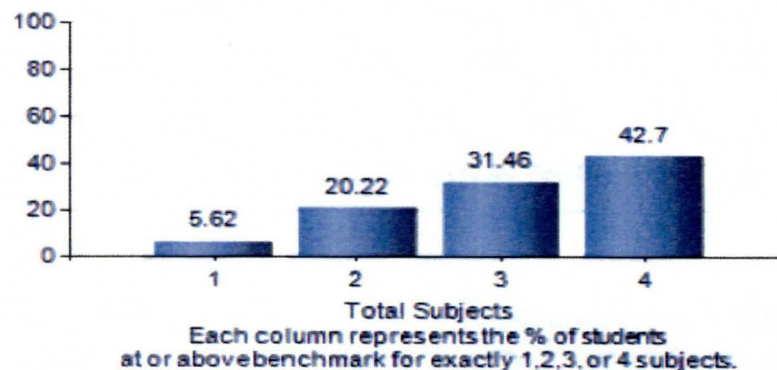
% of Students in Each Subject



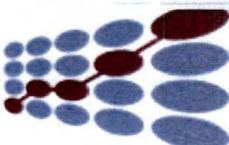
## ND ACT Student Details

Parameters: District   
School  School Year (2011)

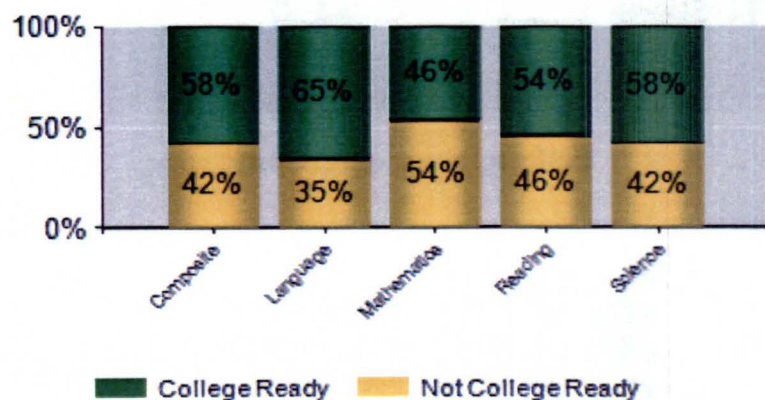
% Reached At or Above Benchmark



## Statewide Longitudinal Data System



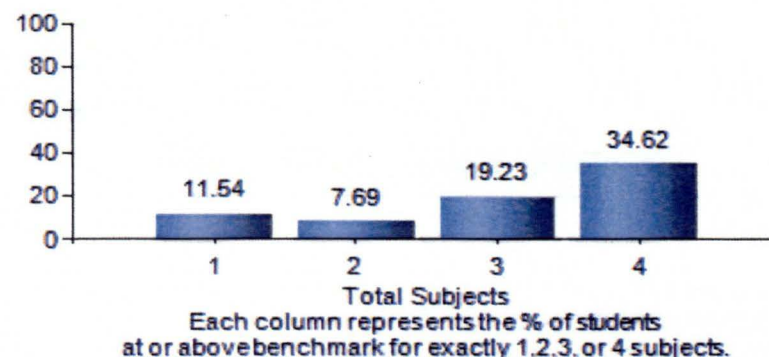
% of Students in Each Subject



## ND ACT Student Details

Parameters: District   
School  School Year (2010)

% Reached At or Above Benchmark

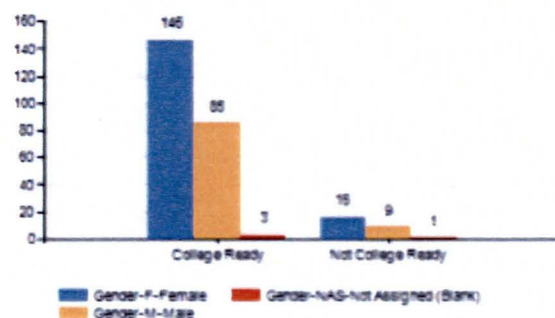


7 out of 26 Students did not pass any subject areas

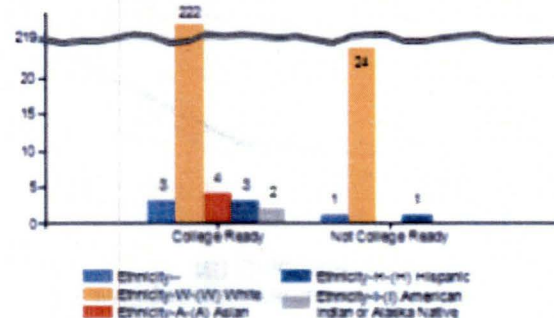


Note: the demographics is the student demographics in the Student Information System for the year of the test, not the demographics provided in the test data.

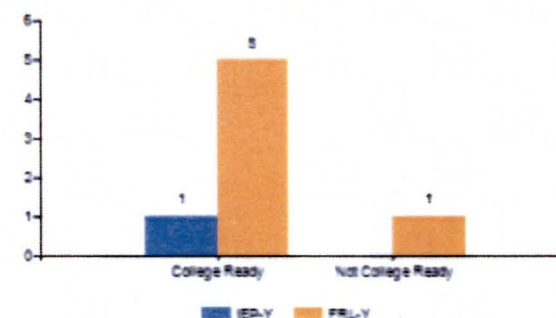
Proficiency Level by Gender



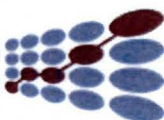
Proficiency Level by Ethnicity



Proficiency Level by Special Population



Proficiency by Demographics	Composite		Language		Mathematics		Reading		Science	
	Not College Ready	College Ready	Not College Ready	College Ready	Not College Ready	College Ready	Not College Ready	College Ready	Not College Ready	College Ready
Gender-F-Female	16	146	3	161	55	110	22	147	95	73
Gender-M-Male	9	85	4	89	13	79	26	66	34	59
IEP-Y	-	1	-	1	-	1	-	1	-	1
FRL-Y	1	5	-	6	4	2	-	6	2	4
Ethnicity--	1	3	1	4	2	2	1	3	2	1
Ethnicity-A-(A) Asian	-	4	-	4	1	3	-	4	2	2
Ethnicity-H-(H) Hispanic	1	3	-	4	2	2	-	4	1	2
Ethnicity-I-(I) American Indian or Alaska Native	-	2	-	2	-	2	-	2	1	1



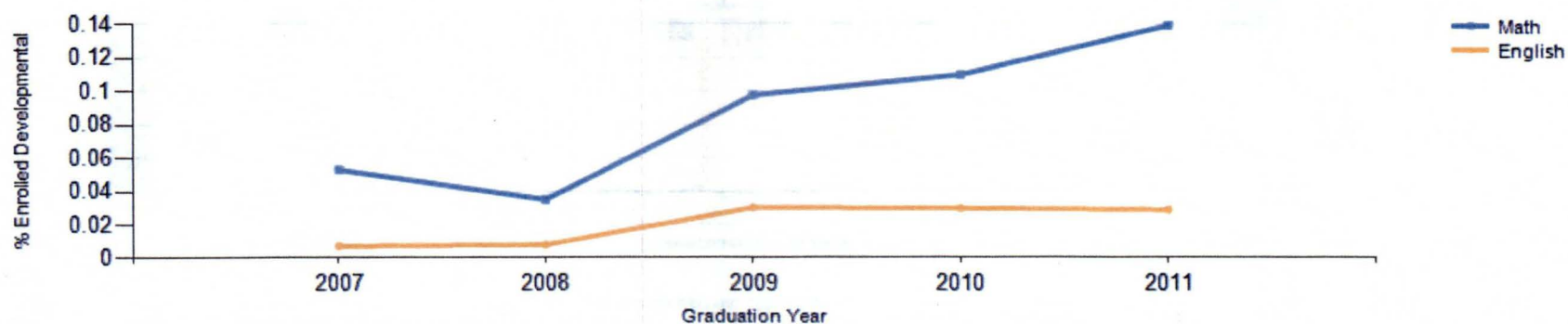
# North Dakota Developmental Courses by Subject Area

Parameters: District

Report ID: NDUS C223 Subject Area.rdl

State	Year	Total	Math	Math Pct	English	English Pct	Study Skills	Study Skills Pct	Social Science	Social Science Pct	Lab Science	Lab Science Pct	Other	Other Pct
ND	2007	285	15	5.3%	2	0.7%	0	0.0%	0	0.0%	0	0.0%	0	0.0%
	2008	259	9	3.5%	2	0.8%	0	0.0%	0	0.0%	0	0.0%	0	0.0%
	2009	267	26	9.7%	8	3.0%	0	0.0%	0	0.0%	0	0.0%	0	0.0%
	2010	237	26	11.0%	7	3.0%	0	0.0%	0	0.0%	0	0.0%	0	0.0%
	2011	244	34	13.9%	7	2.9%	0	0.0%	0	0.0%	0	0.0%	0	0.0%
	Total	1,292	110	8.5%	26	2.0%	0	0.0%	0	0.0%	0	0.0%	0	0.0%
Total	Total	1,292	110	8.5%	26	2.0%	0	0.0%	0	0.0%	0	0.0%	0	0.0%

Developmental Percent By Subject  
ND Graduates





# ND District Assessment Summary

Parameters

Test Year (11-12,10-11), Test (North Dakota State Assessment)  
Subject(s) (Language,Mathematics,Reading,Science)

Year

[Click Here for Details](#)

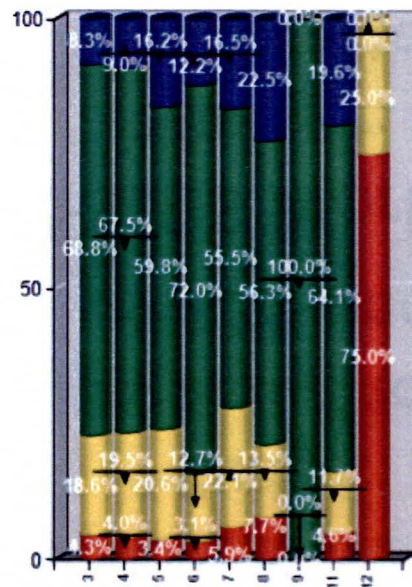
[Click Here for Details](#)

[Click Here for Details](#)

[Click Here for Details](#)

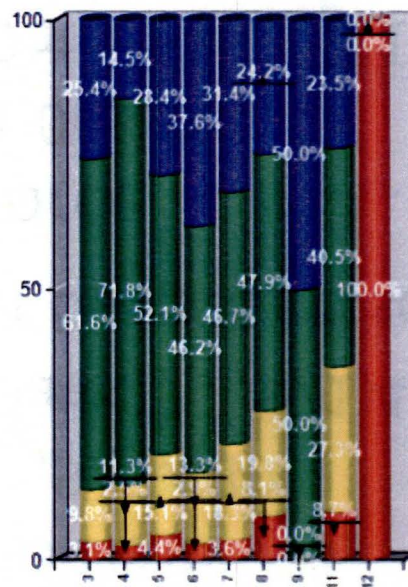
2011

Language Performance Percentages



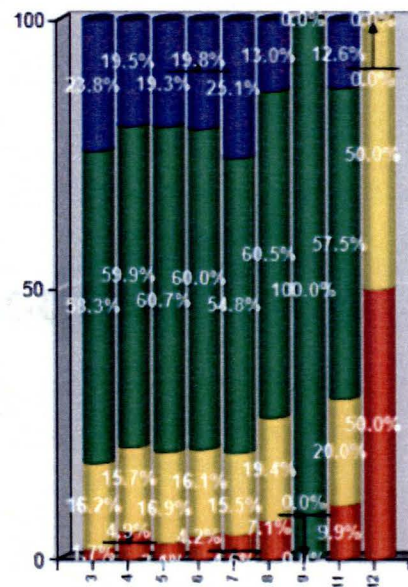
Advanced Proficient Partially Proficient Novice

Mathematics Performance Percentages



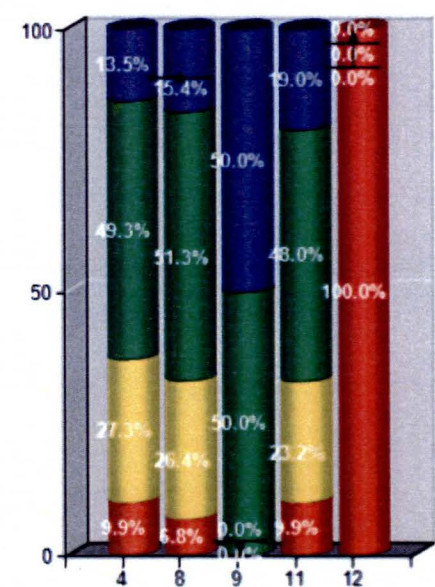
Advanced Proficient Partially Proficient Novice

Reading Performance Percentages



Advanced Proficient Partially Proficient Novice

Science Performance Percentages



Advanced Proficient Partially Proficient Novice

# Project Status - Green

## ✧ SLDS K-12 Domain

- ✧ Budget: \$ 4,915,680

- ✧ Actual to Date: \$ 2,571,427

- ✧ 7.3% under budget, on schedule

## ✧ SLDS Workforce

- ✧ Budget: \$1,005,000

- ✧ Actual to Date: \$162,691

- ✧ 25.6% under budget, 19.8% behind schedule

## ✧ SLDS Overall

- ✧ Budget: \$ 1,929,000

- ✧ Actual to Date: \$ 209,995

- ✧ 87% under budget, 10% behind schedule