

Bismarck State College

	(1)	(2)	(3)	(4)	(5)	
	Gross Institutional Collections-Tuition 1/	Waivers 2/	Inst. Collections Less Waivers	Fee Revenue	Total Net Tuition and Fee Revenue	
2011-13 est.	\$28,310,000	\$353,875	\$27,956,125	\$3,923,000	\$31,879,125	Est.
2009-11	\$28,543,372	\$357,683	\$28,185,689	\$3,309,211	\$31,494,900	
2007-09	\$23,351,883	\$277,818	\$23,074,065	\$3,299,038	\$26,373,103	A)
2005-07	\$18,074,952	\$274,635	\$17,800,317	\$3,615,935	\$21,416,252	
2003-05	\$16,326,120	\$326,135	\$15,999,985	\$2,914,227	\$18,914,212	
2001-03	\$10,684,240	\$252,040	\$10,432,200	\$2,088,951	\$12,521,151	Est.

1/ from campus survey, does not include offset for bad debts, bank fees, etc.

2/ from annual NDUS waiver reports, except 2011-13 estimate provided by campuses

A) included all online tuition in institutional collections starting in 2009

G:\LAURA\excel\TUITION\[Tuition and fee collections 2001.03 to 2011.13 less waivers.xlsx]NDSU

Lake Region State College

	(1)	(2)	(3)	(4)	(5)
	Gross Institutional Collections-Tuition 1/	Waivers 2/	Inst. Collections Less Waivers	Fee Revenue	Total Net Tuition and Fee Revenue
2011-13 est.	\$9,635,332	\$479,700	\$9,155,632	\$927,450	\$10,083,082 Est.
2009-11	\$8,915,741	\$368,144	\$8,547,597	\$863,900	\$9,411,497
2007-09	\$7,728,690	\$453,795	\$7,274,895	\$856,800	\$8,131,695
2005-07	\$6,019,313	\$276,605	\$5,742,708	\$768,300	\$6,511,008
2003-05	\$5,953,464	\$162,738	\$5,790,726	\$750,000	\$6,540,726 Est.
2001-03	\$3,946,216	\$188,857	\$3,757,359	\$525,000	\$4,282,359 Est.

1/ from campus survey, does not include offset for bad debts, bank fees, etc.

2/ from annual NDUS waiver reports, except 2011-13 estimate provided by campuses

G:\LAURA\excel\TUITION\[Tuition and fee collections 2001 03 to 2011 13 less waivers.xlsx]NDSU

Williston State College

	(1)	(2)	(3)	(4)	(5)
	Gross Institutional Collections-Tuition 1/	Waivers 2/	Inst. Collections Less Waivers	Fee Revenue	Total Net Tuition and Fee Revenue
2011-13 est.	\$3,403,698	\$270,000	\$3,133,698	\$1,650,000	\$4,783,698 Est.
2009-11	\$3,324,215	\$252,200	\$3,072,015	\$1,579,913	\$4,651,928
2007-09	\$3,365,693	\$176,499	\$3,189,194	\$1,419,214	\$4,608,408
2005-07	\$3,488,873	\$179,583	\$3,309,290	\$1,330,143	\$4,639,433
2003-05	\$3,274,745	\$137,882	\$3,136,863	\$1,420,504	\$4,557,367 Est.
2001-03	\$2,437,254	\$114,528	\$2,322,726	\$1,136,403	\$3,459,129 Est.

1/ from campus survey, does not include offset for bad debts, bank fees, etc.

2/ from annual NDUS waiver reports, except 2011-13 estimate provided by campuses

G:\LAURA\excel\TUITION\[Tuition and fee collections 2001 03 to 2011 13 less waivers.xlsx]NDSU

University of ND, excluding SOMHS

	(1)	(2)	(3)	(4)	(5)	(6)	(7)
	Gross Institutional Collections-Tuition 1/	Waivers 2/	Inst. Collections Less Waivers	Fee Revenue excluding Flight Fee Revenue	Total Net Tuition and Fee Revenue, Excl Flight Fees	Flight Fee Revenue	Total Net Tuition and Fee Revenue, Incl Flight Fees
2011-13 est.	\$157,265,665	\$17,592,076	\$139,673,589	\$39,853,514	\$179,527,103	\$25,684,325	\$205,211,428
2009-11	\$153,827,759	\$15,707,003	\$138,120,756	\$39,064,675	\$177,185,431	\$25,124,060	\$202,309,491
2007-09	\$132,924,728	\$13,482,461	\$119,442,267	\$39,744,332	\$159,186,599	\$27,081,574	\$186,268,174
2005-07	\$122,897,605	\$15,804,570	\$107,093,035	\$37,676,514	\$144,769,549	\$27,720,705	\$172,490,254
2003-05 3/	\$100,907,290	\$13,350,387	\$87,556,903	\$30,935,639	\$118,492,542	\$22,761,068	\$141,253,609
2001-03 3/	\$66,590,743	\$7,401,755	\$59,188,988	\$20,415,521	\$79,604,509	\$15,020,833	\$94,625,342

1/ from campus survey, does not include offset for bad debts, bank fees, etc.

2/ from annual NDUS waiver reports, except 2011-13 estimate provided by campuses

3/ Amounts in columns 4 and 6 for FY2002-2004 are pre-CND estimates

4/ added a separate column for flight fee revenue

G:\LAURA\excel\TUITION\Tuition and fee collections 2001 03 to 2011 13 less waivers.xlsx\NDSU

University of ND SOMHS only

	(1)	(2)	(3)	(4)	(5)
	Gross Institutional Collections-Tuition 1/	Waivers 2/	Inst. Collections Less Waivers	Fee Revenue	Total Net Tuition and Fee Revenue
2011-13 est.	\$28,129,431	\$1,227,960	\$26,901,471	\$142,385	\$27,043,856
2009-11	\$24,341,644	\$1,160,536	\$23,181,108	\$135,328	\$23,316,436
2007-09	\$24,860,765	\$1,105,887	\$23,754,878	\$128,623	\$23,883,501
2005-07	\$20,588,335	\$1,061,634	\$19,526,701	\$127,098	\$19,653,799
2003-05 3/	\$15,321,358	\$529,529	\$14,791,829	\$85,878	\$14,877,707
2001-03 3/	\$12,466,872	\$563,267	\$11,903,605	\$75,400	\$11,979,005

1/ from campus survey, does not include offset for bad debts, bank fees, etc.

2/ from annual NDUS waiver reports, except 2011-13 estimate provided by campuses

3/ Amounts in column 4 for FY2002-2004 are pre-CND estimates

G:\LAURA\excel\TUITION\[Tuition and fee collections 2001 03 to 2011 13 less waivers.xlsx]NDSU

North Dakota State University

	(1)	(2)	(3)	(4)	(5)
	Gross Institutional Collections-Tuition 1/	Waivers 2/	Inst. Collections Less Waivers	Fee Revenue	Total Net Tuition and Fee Revenue
2011-13 est. 3/	\$ 200,043,262.00	\$ 38,411,000.00	\$ 161,632,262.00	\$ 31,599,000.00	\$193,231,262
2009-11	\$ 155,641,269.00	\$ 30,525,987.00	\$ 125,115,282.00	\$ 30,828,296.00	\$155,943,578
2007-09	\$ 132,163,178.00	\$ 24,240,754.00	\$ 107,922,424.00	\$ 27,166,628.00	\$135,089,052
2005-07	\$ 111,466,412.00	\$ 19,180,438.00	\$ 92,285,974.00	\$ 24,007,412.00	\$116,293,386
2003-05	\$ 90,716,144.00	\$ 15,828,527.00	\$ 74,887,617.00	\$ 17,689,620.00	\$92,577,237
2001-03	\$ 64,817,625.00	\$ 9,609,578.00	\$ 55,208,047.00	\$ 12,240,709.00	\$67,448,756

1/ from campus survey, does not include offset for bad debts, bank fees, etc.

2/ from annual NDUS waiver reports, except 2011-13 estimate provided by campuses

Increase in 2011-13 waivers due to Presidential academic scholarships awarded 2009-11 converted to Presidential academic waivers, tuition increase for FY12 (8.8%) and FY13 (0.0%).

3/ All DCE/CEL tuition revenue (est \$17M) is classified as appropriated, rather than local revenue, beginning 7/1/2011. The remaining increase in tuition collections, from 2009-11 to 2011-13, is due to enrollment increases, as well as an 8.8% tuition rate increase for FY12 and 0.0% for FY13. The amounts for 2011-13 do not reflect a change in the tuition and fee model that the SBHE will be asked to approve for FY13.

G:\LAURA\excel\TUITION\[Tuition and fee collections 2001 03 to 2011 13 less waivers.xlsx]NDSU

North Dakota State College of Science

	(1)	(2)	(3)	(4)	(5)
	Gross Institutional Collections-Tuition 1/	Waivers 2/	Inst. Collections Less Waivers	Fee Revenue	Total Net Tuition and Fee Revenue
2011-13 est.	\$15,900,000	\$2,100,000	\$13,800,000	\$4,866,061	\$18,666,061
2009-11	\$13,941,139	\$1,980,298	\$11,960,841	\$4,429,911	\$16,390,752
2007-09	\$12,705,676	\$1,361,075	\$11,344,601	\$4,816,602	\$16,161,203
2005-07	\$12,827,163	\$1,345,971	\$11,481,192	\$4,202,652	\$15,683,844
2003-05	\$11,795,338	\$922,686	\$10,872,652	\$3,148,721	\$14,021,373
2001-03	\$10,266,298	\$440,892	\$9,825,406	\$2,700,000	\$12,525,406

1/ from campus survey, does not include offset for bad debts, bank fees, etc.

2/ from annual NDUS waiver reports, except 2011-13 estimate provided by campuses

3/ Amounts in column 4 for FY2002-2004 are pre-CND estimates

G:\LAURA\excel\TUITION\[Tuition and fee collections 2001 03 to 2011 13 less waivers.xlsx]NDSU

Dickinson State University

	(1)	(2)	(3)	(4)	(5)
	Gross Institutional Collections-Tuition 1/	Waivers 2/	Inst. Collections Less Waivers	Fee Revenue	Total Net Tuition and Fee Revenue
2011-13 est.	\$23,639,636	\$5,779,909	\$17,859,727	\$5,038,553	\$22,898,280 **
2009-11	\$23,966,462	\$6,108,890	\$17,857,572	\$4,718,931	\$22,576,503
2007-09	\$23,893,559	\$6,373,424	\$17,520,135	\$4,940,544	\$22,460,679
2005-07	\$18,193,745	\$3,947,078	\$14,246,667	\$3,854,208	\$18,100,875
2003-05	\$13,508,463	\$2,147,857	\$11,360,606	\$3,374,440	\$14,735,046 *
2001-03	\$8,890,476	\$1,065,072	\$7,825,404	\$2,327,200	\$10,152,604 *

1/ from campus survey, does not include offset for bad debts, bank fees, etc.

2/ from annual NDUS waiver reports, except 2011-13 estimate provided by campuses

G:\LAURA\excel\TUITION\[Tuition and fee collections 2001 03 to 2011 13 less waivers.xlsx]NDSU

* Fee revenue for FY's 2002, 2003, and 2004 are estimates as the data is no longer available prior to July 2005, the date we converted from legacy systems to PeopleSoft.

** Early estimate based upon actual fall 2011 enrollments, projected enrollment spring 2012 through summer 2013.

Mayville State University

	(1)	(2)	(3)	(4)	(5)
	Gross Institutional Collections-Tuition 1/	Waivers 2/	Inst. Collections Less Waivers	Fee Revenue	Total Net Tuition and Fee Revenue
2011-13 est.	\$7,762,615	\$580,000	\$7,182,615	\$2,626,688	\$9,809,303
2009-11	\$6,990,064	\$504,003	\$6,486,061	\$2,463,720	\$8,949,781
2007-09	\$5,548,824	\$448,098	\$5,100,726	\$1,955,409	\$7,056,135
2005-07	\$5,670,379	\$584,410	\$5,085,969	\$2,114,118	\$7,200,087
2003-05	\$4,773,728	\$768,397	\$4,005,331	\$1,921,866	\$5,927,197
2001-03	\$2,968,442	\$191,235	\$2,777,207	\$1,821,093	\$4,598,300
Total	\$33,714,052	\$3,076,143	\$30,637,909	\$12,902,894	

1/ from campus survey, does not include offset for bad debts, bank fees, etc.

2/ 2001-03 through 2009-11 from annual tuition waiver report with the following exception. During the 2007-09 and 2009-11 biennium, certain institutional waivers were improperly coded as scholarships, rather than waivers, which resulted in them not being included in the annual tuition waiver reports. The amounts for 2007-09 and 2009-11 have been adjusted to include the correct amount for all waivers. The campus will correct the coding for the future. 2011-13 est by campus.

On-campus students are assigned a TabletPC computers and are assessed a laptop fee (\$ 795) in addition to the Technology fee (\$195).

FY2002 Gross Tuition is taken from the estimate included in the FY2003 Budget schedule #2

Minot State University

	(1)	(2)	(3)	(4)	(5)
	Gross Institutional Collections-Tuition 1/	Waivers 2/	Inst. Collections Less Waivers	Fee Revenue	Total Net Tuition and Fee Revenue
2011-13 est.	\$33,768,889	\$3,376,889	\$30,392,000	\$8,193,941	\$38,585,941
2009-11	\$21,024,369	\$2,422,339	\$18,602,030	\$5,574,432	\$24,176,462
2007-09	\$21,021,825	\$2,614,300	\$18,407,525	\$3,814,459	\$22,221,984
2005-07	\$19,041,794	\$2,260,509	\$16,781,285	\$3,054,410	\$19,835,695
2003-05	\$17,587,767	\$1,685,685	\$15,902,082	\$2,989,920	\$18,892,002 *
2001-03	\$14,232,064	\$864,732	\$13,367,332	\$2,419,451	\$15,786,783 *
Total	\$92,907,819	\$9,847,565	\$83,060,254		

1/ from campus survey, does not include offset for bad debts, bank fees, etc.

2/ from annual NDUS waiver reports, except 2011-13 estimate provided by campuses

G:\LAURA\excel\TUITION\[Tuition and fee collections 2001 03 to 2011 13 less waivers.xlsx]NDSU

Note:

*Fee revenue for the 2001-03 & 2003-05 biennia is not available. These amounts were calculated based on an average fee to tuition ratio of the 2005-07 & 2007-09 biennia.

Valley City State University

	(1)	(2)	(3)	(4)	(5)
	Gross Institutional Collections-Tuition 1/	Waivers 2/	Inst. Collections Less Waivers	Fee Revenue	Total Net Tuition and Fee Revenue
2011-13 est.	\$11,165,000	\$1,135,600	\$10,029,400	\$3,500,000	\$13,529,400
2009-11	\$9,537,909	\$930,140	\$8,607,769	\$3,239,112	\$11,846,881
2007-09	\$8,041,886	\$853,837	\$7,188,049	\$2,926,898	\$10,114,947
2005-07	\$7,387,014	\$829,491	\$6,557,523	\$2,741,187	\$9,298,710
2003-05	\$5,934,173	\$588,299	\$5,345,874	\$2,709,263	\$8,055,137
2001-03	\$4,065,421	\$378,447	\$3,686,974	\$2,700,000	\$6,386,974

1/ from campus survey, does not include offset for bad debts, bank fees, etc.

2/ from annual NDUS waiver reports, except 2011-13 estimate provided by campuses

* Valley City State University charges a technology fee that includes an amount for laptop lease for each student.

* 2001-03 is an estimated amount

Dakota College-Bottineau

	(1)	(2)	(3)	(4)	(5)
	Gross Institutional Collections-Tuition 1/	Waivers 2/	Inst. Collections Less Waivers	Fee Revenue	Total Net Tuition and Fee Revenue
2011-13 est.	\$3,718,290	\$135,674	\$3,582,616	\$969,691	\$4,552,307
2009-11	\$3,607,693	\$132,674	\$3,475,019	\$950,485	\$4,425,504
2007-09	\$2,718,816	\$100,308	\$2,618,508	\$714,580	\$3,333,088
2005-07	\$2,270,019	\$89,307	\$2,180,712	\$664,938	\$2,845,650
2003-05	\$2,081,387	\$97,189	\$1,984,198	\$612,943	\$2,597,141
2001-03	\$1,676,539	\$83,429	\$1,593,110	\$515,015	\$2,108,125

1/ from campus survey, does not include offset for bad debts, bank fees, etc.

2/ from annual NDUS waiver reports, except 2011-13 estimate provided by campuses

NOTE: The only available data for FY '02, '03, and '04 is a combination of tuition and fee revenues. Details to separate tuition and fee revenues does not exist at DCB. Thus, the tuition information for 01-03 and 03-05 is estimated.

G:\LAURA\excel\TUITION\[Tuition and fee collections 2001 03 to 2011 13 less waivers.xlsx]NDSU

NORTH DAKOTA UNIVERSITY SYSTEM
2011-12 ANNUAL (FULL-TIME) UNIVERSITY/COLLEGE & STUDENT GOVERNMENT FEE RATES PER BHE POLICY 805.2

BSC:		
College Fee	\$264.00	Allocated to student government, student activities, student union, student newspaper, parking, athletics, etc.
Wellness Center Fee	96.00	
TOTAL (Capped at 12 cr hrs/semester)	360.00	
LRSC:		
Student activity fee	256.00	Allocated to athletics, club activities board, contingency fund, intramurals, student senate and recreation room
Facilities usage fee	224.00	79% for revenue bonds and 21% for parking
TOTAL	480.00	
WSC:		
College fee	452.20	Supports college athletics, exercise room for students, ID card system for students and revenue bond payments on Frontier Hall.
Activity fee	161.00	Supports student senate and student programming activities
TOTAL (15th and 16th are free)	613.20	
UND:		
Student activity fee	756.96	Allocated for student activities, athletics, student government, student government projects, student health and student union
Wellness Center fee - Bond	109.44	
Wellness Center fee - Operations	139.44	
McCannel renovation fee	30.00	
TOTAL (Capped at 12 cr hrs/semester)	1035.84	
NDSU:		
Student activity fee	261.60	Allocated for Athletics, Student Media Advisory Board (Newspaper, TV, Radio), Student Programming, Campus Recreation, Fine Arts, Memorial Union (Operations/Programming) Student Government and Student Organizations
Student Union Expansion	92.40	
Wellness Center Fee & Addition	160.00	
Student Health Service Fee	114.00	
Career Service fee	44.00	
Library fee	39.84	
TOTAL (Capped at 12 cr hrs/semester)	711.84	
NDSCS:		
Athletics	91.00	
Clubs	17.28	
Drama	7.98	
Campus Activities Board	19.96	
Music	13.54	
Student Senate	27.30	
Student Center	16.80	
Student Recreation	7.28	
Workout Facility Fee	30.00	
Health Service Fee	58.80	
TOTAL (Capped at 12 cr hrs/semester)	289.94	

NORTH DAKOTA UNIVERSITY SYSTEM
2011-12 ANNUAL (FULL-TIME) UNIVERSITY/COLLEGE & STUDENT GOVERNMENT FEE RATES PER BHE POLICY 805.2

DSU:		
University Fee	628.50	Supports athletics, career services, music, theatre/dance, rodeo team, student newspaper, literary speakers, student health and scheduling office
Student Government Activity Fee	138.00	Supports student senate, homecoming, campus activity board, intramural activities and student activities
Badlands Activity Center Fee	120.00	
TOTAL (Capped at 12 cr hrs/semester)	886.50	
MaSU:		
University Fee	367.50	Supports campus center, athletics, career services, fine arts, facilities improvements and student health
Student Government Fee	84.00	
Wellness Center Operations Fee	105.00	
TOTAL (Capped at 12 cr hrs/semester)	556.50	
MISU:		
Athletics	160.80	
Student Health Fee	70.00	
Placement	52.00	
Health & Wellness Center	271.94	
Fitness Center	90.00	
University Endowment	3.00	
Subtotal-University Fee	647.74	
Activity Fee	244.68	Supports theatre arts, student tours, student assoc, student activities, publications, KMSU radio, Native Amer center, mentoring, tutoring, hockey club, homecoming, student assoc club fee, multicultural center, Beaver athletic band, music, marching band, & art gallery
TOTAL (13th-18th are free)	892.42	
VCSU:		
University fee	290.00	Supports student center and athletics
Health fee	60.00	
Student Activity Fee	132.00	Supports student senate, homecoming, campus activity board, music and theatre.
Fitness Center Fee	10.00	
TOTAL (Capped at 12 cr hrs/semester)	492.00	
DCB:		
Activity fee	320.00	Allocated to student government, student union, student newspaper, athletics and intramurals
Student Health Fee	50.00	
College fee	60.00	Supports additional student recreational programming including 1st week activities, homecoming, literary speakers and fine arts
TOTAL (Capped at 12 cr hrs/semester)	430.00	

C:\Users\lgjatt\AppData\Local\Microsoft\Windows\Temporary Internet Files\Content.Outlook\OA34N2KY\College-University Student Gov Fees.xlsx

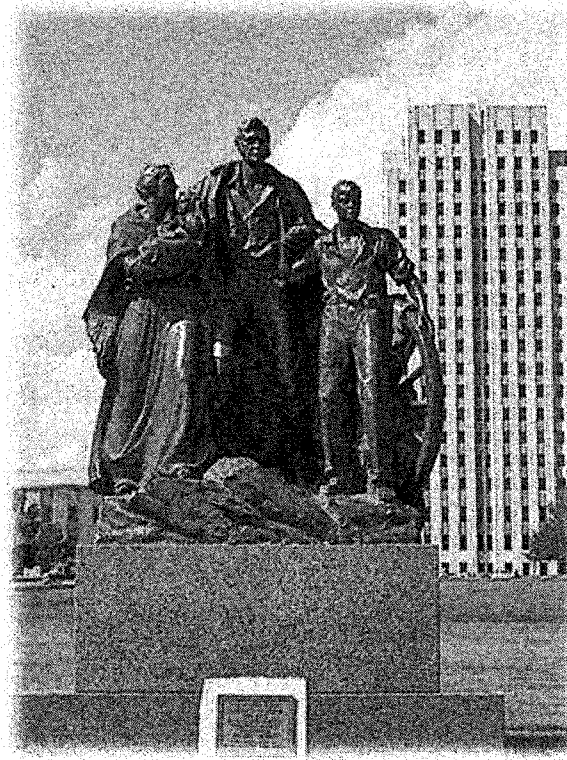
Prepared for the Interim HE Committee, April 17-18, 2012

A. RESIDENT VS. NON-RESIDENT RATES

Resident and non-resident students pay varying rates as noted below:

- 1.) Minnesota students: Under the reciprocity agreement, generally students pay the higher of the two states rates, which has historically been the MN rate. In addition, ND has historically received a payment to cover the marginal cost per student for the additional students received beyond the even exchange between the two states. **Exceptions:** LRSC, MISU, WSC and NDSCS (at NDSCS if living in residence hall and with meal plan) charge the resident tuition rate to MN students.
- 2.) SD, MT, Saskatchewan, and Manitoba: Based on unilateral practice and SBHE approval, students are charged: 1.) 100% of resident rate: LRSC, MiSU, WSC; 2.) 125% of resident rate: BSC, NDSCS, DSU, MASU, VCSU, DCB (Note: NDSCS charges resident rate if living in residence hall and with meal plan); 3.) 150% of resident rate: UND and NDSU.
- 3.) WICHE: (Alaska, Arizona, California, Colorado, Hawaii, Idaho, Montana, Nevada, New Mexico, North Dakota, Oregon, South Dakota, Utah, Washington, Wyoming): 1.) 100% of resident rate: LRSC, WSC, MiSU; 2.) 150% of participating institution's resident rate.
- 4.) MHEC: (Kansas, Michigan, Minnesota, Missouri, Nebraska, North Dakota, Ohio, and Wisconsin—while Illinois, Indiana, Iowa, South Dakota, and Ohio are MHEC members they do not participate in the student exchange program at this time) Public institutions agree to charge students no more than 150% of the in-state resident tuition rate for specific programs; private institutions offer a 10% reduction on their tuition rates. 1.) 100% of resident rate: LRSC, WSC, MiSU;
- 5.) Other Non-Resident Students: Based on unilateral practice and SBHE approval, all other non-resident students are charged the following: 1.) 267% of resident rate: BSC, DSU, NDSCS, NDSU, UND, VCSU; 2.) 150% of resident rate: DCB, MaSU; 3.) 100% of resident rate: LRSC (except international students who are charged 250%), MiSU, and WSC.
- 6.) Negotiated rates: Programs offered directly to business and industry and other non-traditional customers based on market demand in order to deliver the training contemplated by NDCC chapter 52-08 and respond to the need for other programs in non-traditional markets. Negotiated flat rate charge, not less than the resident tuition rate, to be paid in full or in part by a third party for the delivery of courses or programs to a defined group of students.

Note: When the SBHE approves, either by policy or action, an exception to the general rates outlined above, the difference between the traditional rate category and the new rate, is not recorded as a waiver. As a result, this creates some waiver reporting differences between campuses; however, it does not account for all differences.



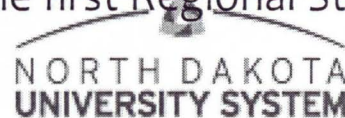
NDUS

TUITION AND COURSE TRANSFER RECIPROCITY AGREEMENTS WITH OTHER STATES



NDUS Course Transfer Reciprocity Agreements

- **In State:**
- GERTA – in March, 1994, the SBHE adopted the “General Education Requirement Transfer Agreement”. This agreement is a representation of a common general education agreement that has been adopted by all NDUS institutions and other associated institutions. This agreement was created to help students when they transfer between institution comprising the NDUS. Other campuses who are a part of the agreement are our Tribal College Partners: Candeska Cikana Community College, Ft. Berthold Community College, Sitting Bull College, United Tribes Technical College, and Turtle Mountain Community College.
- The contents of the Guide were developed by the registrars who meet annual to review the document, share information, and make necessary updates.
- This guide is considered the envy of other states. North Dakota is considered a national leader with regard to transfer policy.
- FURTHER EFFORTS: WICHE Passport Initiative. Vice Chancellor is Co-Chair with Peter Quiggley from Hawaii to create the first Regional State Transfer Agreement. Again, work that is of national envy.



State Transfer Agreements

- **Washington State Community and Technical College Transfer Summary**
 - Goal to provide students an opportunity to continue a full time or part time education toward a baccalaureate degree, when transferring to any NDUS institution. Students who graduate with an associate in arts degree are assured of an opportunity to continue – if there were 60 transferable credits – the student would be afforded junior (3rd year standing).
 - The student who completed the said AA degree, would be granted credit for having met all lower division general education requirements with the exception that the students may be required to complete a communications course in public speaking, speech, or other approved communication course. Students may be required to complete other courses, which may fall under a general education category only if the courses are required as a part of the student's major and were not completed prior to transfer or are a part of the receiving institution's upper division general education requirements.
 - To be eligible under this assurance the student must:
 - Complete an associate in arts (AA-DTA) degree
 - Have a 2.0 GPA on a 4.0 Scale
 - Apply for admission to the receiving institution
 - Supply the receiving institution with all required documentation
 - Meet all deadlines set by the receiving institution
 - Be in good standing with the prior institution
 - Be subject to the criminal justice disclosure and review process of each campus.



State Transfer Agreements

• Minnesota System of Colleges and University Transfer Summary

- The goal of this procedure is to provide Minnesota System of Colleges and University (MnSCU) students an opportunity to continue a FT or PT education toward a baccalaureate degree, when transferring from any MnSCU institution to NDUS institutions.
- Students who have completed an AA degree or who are documented by official transcript to have completed the Minnesota Transfer Curriculum will be granted credit for having met all lower division general education requirements at the receiving ND institution.
- Students may be required to complete other courses, which may fall under a general education category only if the courses are required as a part of the student's major and were not completed prior to transfer or are a part of the receiving institution's upper division general education requirements.
- To be eligible under this assurance the student must:
 - Complete an AA degree, AS, BS, BA
 - Have a 2.0 GPA on a 4.0 Scale
 - Apply for admission to the receiving institution
 - Supply the receiving institution with all required documentation
 - Meet all deadlines set by the receiving institution
 - Be in good standing with the prior institution
 - Be subject to the criminal justice disclosure and review process of each campus.



State Transfer Agreements

- **South Dakota University System Transfer Admission**

- The goal of this procedure is to provide for students attending public universities under the control of the South Dakota Board of Regents an opportunity to continue a FT or PT education toward a baccalaureate degree, when they have completed the general education requirements of any of the universities of the South Dakota University System.
- Students may be required to complete other courses, which may fall under a general education category only if the courses are required as a part of the student's major and were not completed prior to transfer or are a part of the receiving institution's upper division general education requirements.
- To be eligible under this assurance the student must:
 - Have completed the general education requirements of one of the SDUS institutions.
 - Have a 2.0 GPA on a 4.0 Scale
 - Apply for admission to the receiving institution
 - Supply the receiving institution with all required documentation
 - Meet all deadlines set by the receiving institution
 - Be in good standing with the prior institution
 - Be subject to the criminal justice disclosure and review process of each campus.



State Transfer Agreements

- **Wyoming Community College Transfer Summary**

- Goal to provide Wyoming Community College students an opportunity to continue a full time or part time education toward a baccalaureate degree, when transferring to any NDUS institution. Students who graduate with an AA or AS degree are assured of an opportunity to continue studying toward a bachelor's degree on a FT or PT basis and would be afforded junior (third year) standing based on the number of completed credits.
- Students who are verified, by official transcript or by official correspondence from one of the Wyoming community colleges, to have completed a general education core of at least 36 credits also will be granted credit for having met lower division general education requirements at the receiving NDUS institution. Students may be required to complete other courses, which may fall under a general education category only if the courses are required as a part of the student's major and were not completed prior to transfer or are a part of the receiving institution's upper division general education requirements.
- To be eligible under this assurance the student must:
 - Complete an AA or AS degree
 - Have a 2.0 GPA on a 4.0 Scale
 - Apply for admission to the receiving institution
 - Supply the receiving institution with all required documentation
 - Meet all deadlines set by the receiving institution
 - Be in good standing with the prior institution
 - Be subject to the criminal justice disclosure and review process of each campus.



State Transfer Agreements

- **California Community College Transfer Summary**

- Goal to provide California Community College students an opportunity to continue a full time or part time education toward a baccalaureate degree, when transferring to any NDUS institution, following the student's completion of the Inter-segmental General Education Transfer Curriculum.
- Subject to an additional required speech course, Students who are verified, by official transcript or by official correspondence from one of the California community colleges, to have completed the Inter-segmental General Education Transfer Curriculum will be granted credit for having met lower division general education requirements at the receiving NDUS institution. Students may be required to complete other courses, which may fall under a general education category only if the courses are required as a part of the student's major and were not completed prior to transfer or are a part of the receiving institution's upper division general education requirements.
- To be eligible under this assurance the student must:
 - Provide documented completion of the Inter-segmental General Education Transfer Curriculum
 - Have a 2.0 GPA on a 4.0 Scale
 - Apply for admission to the receiving institution
 - Supply the receiving institution with all required documentation
 - Meet all deadlines set by the receiving institution
 - Be in good standing with the prior institution
 - Be subject to the criminal justice disclosure and review process of each campus.



State Transfer Agreements

- **Oregon Transfer Summary**

- Goal to provide Oregon students an opportunity to continue a full time or part time education toward a baccalaureate degree, when transferring from any of Oregon's 24 public colleges and universities to any NDUS institution.
- Students who are verified, by official transcript or by official correspondence from one of Oregon's 24 public colleges or universities, to have completed the Oregon Transfer Summary will be granted credit for having met lower division general education requirements at the receiving NDUS institution. Oregon students with fewer than eight quarter hours in English Composition must complete a second or advanced composition course and additional course under the Humanities, Fine Arts, or Social Science campus general education listing to reach 36 semester hours prior to or upon transfer to a NDUS institution. Students may be required to complete other courses, which may fall under a general education category only if the courses are required as a part of the student's major and were not completed prior to transfer or are a part of the receiving institution's upper division general education requirements.
- To be eligible under this assurance the student must:
 - Provide documented completion of the Oregon Transfer Module
 - Have a 2.0 GPA on a 4.0 Scale
 - Apply for admission to the receiving institution
 - Supply the receiving institution with all required documentation
 - Meet all deadlines set by the receiving institution
 - Be in good standing with the prior institution
 - Be subject to the criminal justice disclosure and review process of each campus.



Benefits of Nonresident Students to the State of North Dakota and the North Dakota University System



ACCESS. INNOVATION. EXCELLENCE.

National data suggest that students are more likely to remain in the state in which they complete postsecondary degrees. Here in North Dakota, 42.2 percent (1,136 of 2,689) of nonresident 2008 NDUS graduates remained in the state one year after graduation, either re-enrolled as students and/or employed in the workforce. This includes 44.7 percent (724 of 1,621) of Minnesota residents who graduated from NDUS institutions in 2008.



Nonresident students bring diversity and a broader range of experiences. They contribute to a richer academic experience at NDUS institutions and expand the horizons of North Dakota students.



Expenditures and purchases by nonresident students have a significant impact on our state's economy.

Based on a 2010 report, "Economic Impact of the North Dakota University System," nonresident students spend, on average, \$9,000 per year in North Dakota, primarily on living expenses, in addition to tuition and fees paid to the institutions.

Systemwide, about 21,000 nonresident students were enrolled in the Fall of 2010. Using the per-student expenditure average, this resulted in \$189 million in nonresident student spending, in addition to tuition and fees.

Nonresident students pay sales and other taxes (including property taxes paid indirectly through rent). Many nonresident students are employed in North Dakota while attending college and pay state income taxes.



Nonresident students, including Minnesota students, pay higher tuition rates than do North Dakota residents. (Note: In addition, the state of Minnesota pays North Dakota for the difference in the number of Minnesota students who attend North Dakota institutions compared to North Dakota students who attend Minnesota institutions. Reciprocity payments to North Dakota from Minnesota in 2008-09 totaled \$3,078,707.)

Contractual student exchange programs, such as the North Dakota/Minnesota reciprocity program, facilitate the flow of students between states and provide additional opportunities for North Dakota residents to attend college out of state at a reduced cost.

Many University System programs have available space, and recruiting nonresident students to fill these spaces makes sense because additional revenues are generated without significant added cost. The added enrollment helps spread fixed costs over a larger student base, thereby helping control cost increases for North Dakota students. If it wasn't for nonresident students, some current programs may not be available to North Dakota resident students.



Many non-resident students live on campus, helping to fill residence halls, contributing to food service operations and, in general, helping to keep costs of these operations lower for North Dakota resident students.



NDUS research efforts would be severely limited without the contributions of highly educated nonresident students, particularly graduate students, who contribute to our growing global economy. These nonresident graduate students also serve a critical role as teaching and research assistants. In the absence of their services, the campuses would have to hire additional faculty and staff, resulting in higher overall costs.



Recruitment of out-of-state students is supported by the private sector, as stated by private sector members of the Roundtable on Higher Education.



These out-of-state students who graduate from NDUS institutions and remain in the state are an important part of our educated workforce. They enable employers to fill positions in high demand and highly skilled areas without spending considerable resources to recruit workers from other states.



Just as private sector businesses recruit out-of-state employees, the NDUS attracts talent by recruiting out-of-state faculty, staff and students.

October 2010



Flexible and Responsive

December 2010 North Dakota/Minnesota Reciprocity

The North Dakota/Minnesota student exchange reciprocity program began in 1975.

The purposes of the program are: (1) to continue to improve postsecondary education opportunities for North Dakota and Minnesota residents and (2) to achieve improved effectiveness and economy in meeting the postsecondary education needs of those residents through cooperative efforts by the two neighboring states.

Benefits:

- Provides greater availability and accessibility to programs; North Dakota students interested in programs not offered in the state are provided access at a reasonable cost and location, including access to the professional programs of dentistry and optometry.
- Eliminates the need for North Dakota's public institutions to be all things to all people; access is provided to programs not offered in the state, thereby avoiding program start-up and on-going costs.
- Provides the North Dakota University System an opportunity to spread fixed costs over a much larger student base through increased enrollments.
- Adds diversity to the student body.

How the Payment Works:

Students generally pay the higher of the two states' tuition rates. Currently, North Dakota students who attend Minnesota campuses pay the Minnesota rate, while Minnesota students who attend NDUS institutions pay the Minnesota rate, which is higher than that of North Dakota.

For Academic Year 2010-11, Minnesota students who attended North Dakota colleges and universities generally paid the following undergraduate rates:

- Minnesota students who attended the University of North Dakota and North Dakota State University paid the average Minnesota State University System resident rates based on the program of instruction.
- Minnesota students who attended Dickinson, Valley City, Minot and Mayville State Universities paid 106 percent of the ND University's resident undergraduate tuition rate.
- Minnesota students who attended North Dakota's two-year colleges paid the average of the Minnesota Community College, Minnesota Technical Colleges and Consolidated Colleges resident tuition rate.

FOR MORE INFORMATION CONTACT:

Laura Glatt, Vice Chancellor for Administrative Affairs
701.328.4116 Laura.Glatt@ndus.edu

www.ndus.edu

Section 9 - Page 7

ND/MN Reciprocity (cont.)

During Academic Year 2008-09, for every 100 Minnesota students who attended North Dakota colleges and universities, 59 North Dakota students attended Minnesota institutions.

Number of Students Using Reciprocity (full-time equivalent)				<i>MN payment to ND</i>
Year	MN in ND	ND in MN	ND to MN Ratio	
1990-91	5,346	4,570	.85	
1991-92	5,217	4,413	.85	
1992-93	5,416	4,119	.76	
1993-94	5,563	4,043	.73	
1994-95	5,619	3,796	.68	
1995-96	5,681	3,715	.65	
1996-97	5,666	3,821	.67	
1997-98	5,586	3,714	.66	
1998-99	5,710	4,298	.76	
1999-00	5,769	4,736	.82	
2000-01	6,064	5,066	.84	
2001-02	6,280	5,298	.84	
2002-03	6,565	5,523	.84	
2003-04	6,933	5,531	.80	
2004-05	7,338	5,512	.75	
2005-06	8,066	5,435	.67	
2006-07	8,030	5,296	.66	
2007-08	8,435	5,051	.60	3,114,302
2008-09	8,226	4,888	.59	3,078,707
2009-10 est.	8,381 8,496	4,781 4,885	.57	4,029,094
2010-11	10,042	4,746	.47	4,212,845
2011-12 est.	10,335	5,759	.56	5,190,278

FOR MORE INFORMATION CONTACT:

Laura Glatt, Vice Chancellor for Administrative Affairs
701.328.4116 Laura.Glatt@ndus.edu

www.ndus.edu

Section 9 - Page 7.1



Flexible and Responsive

December 2010

Western Interstate Commission On Higher Education (WICHE)

The Western Interstate Commission on Higher Education (WICHE) is a non-profit, regional organization established by an interstate compact. It helps 15 western states work together to provide high-quality, cost-effective programs to meet the educational and workforce needs of the western region. In addition, WICHE helps policymakers promote innovation, cooperation, resource sharing and sound public policy among states and institutions.

- The 15 western states that are part of the compact are: Alaska, Arizona, California, Colorado, Hawaii, Idaho, Montana, Nevada, New Mexico, North Dakota, South Dakota, Oregon, Utah, Washington and Wyoming.
- Each participating state pays dues to support WICHE. North Dakota's yearly dues for fiscal year 2012 will be \$125,000 and \$131,000 for fiscal year 2013.
- North Dakota's involvement in various WICHE Interstate programs has helped North Dakota avoid the start-up of costly academic professional programs and has allowed North Dakota residents to participate in programs not offered in-state at reduced tuition rates.
- North Dakota's involvement in WICHE includes participation in the Professional Student Exchange Program, the Western Undergraduate Exchange Program, the Western Regional Graduate Program and the WICHE Cooperative for Educational Technologies.
- WICHE's policy analysis and information focus on higher education in the western states, includes:
 - student cost issues, such as annual tuition and fee data and state financial aid policies;
 - state support for higher education; and
 - the number of high school students graduating in every state and projections to alert education planners to changing state needs.

FOR MORE INFORMATION CONTACT:

Peggy Wipf, Director of Financial Aid and Federal Relations Coordinator
701.328.4114 Peggy.Wipf@ndus.edu

www.ndus.edu

Section 9 - Page 1



Flexible and Responsive

December 2010

Midwest Higher Education Compact (MHEC)

The Midwestern Higher Education Compact (MHEC) is an interstate compact established in 1991. The purpose of MHEC is to advance higher education through interstate cooperation and resource sharing.

MHEC member states are Illinois, Indiana, Iowa, Kansas, Michigan, Minnesota, Missouri, Nebraska, North Dakota, Ohio, South Dakota and Wisconsin. North Dakota has been a member of MHEC since April 1999.

- MHEC goals are to: 1) promote improved student access, 2) affordability and completion; 3) reduce operational costs; 4) analyze public policy and facilitate information exchange; 5) enhance regional higher education cooperation and dialogue; and 6) encourage quality programs and services.
- The North Dakota University System Office has included \$190,000 in its 2011-13 budget request to support its membership in MHEC. This membership would provide expanded educational opportunities for North Dakota students and administrative alignments with other Midwestern higher education institutions.
- Cumulative cost savings realized by North Dakota through participation in MHEC programs is estimated to be about \$852,500. When the amount paid by North Dakota for dues in fiscal year 2009-11 is offset, the net savings is estimated to be \$662,500.

FOR MORE INFORMATION CONTACT:

Peggy Wipf, Director of Financial Aid and Federal Relations Coordinator
701.328.4114 Peggy.Wipf@ndus.edu

www.ndus.edu

Section 9 - Page 5

April 2012 Higher Education Committee



ACCESS. INNOVATION. EXCELLENCE.

Aimee Copas
Academic Affairs
NDUS System Office
701-328-4136
Aimee.Copas@ndus.edu