

---

---

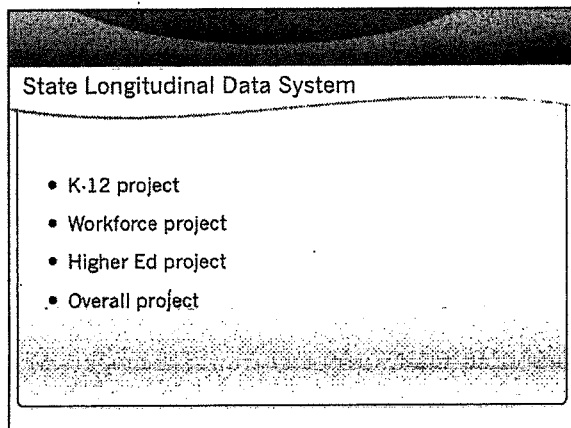
---

---

---

---

---



---

---

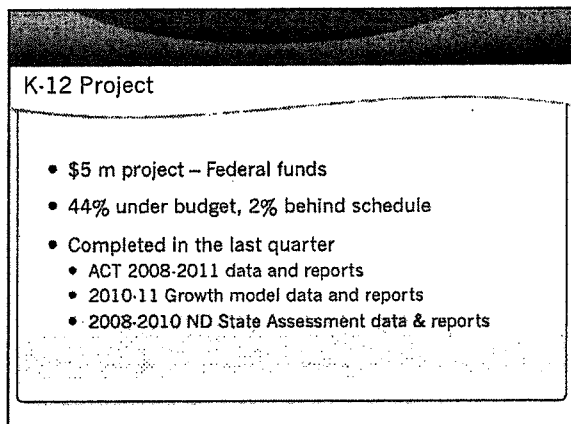
---

---

---

---

---



---

---

---

---

---

---

---

### K-12 Project – In Progress

- Portal design
- Additional reports
- Immunization reports/extracts
- Integrating new PowerSchool districts
- Assessments – need data sharing agreements
- Studying finance reports

---

---

---

---

---

---

---

---

### e-Transcripts

- Will generate an electronic high school transcript certified by the local school district
- Will enable authorized users in post-secondary institutions to view and download the transcript
- The project is currently in the second phase of development and will continue through June 2013 with added functionality.
- A full pilot with districts and post-secondary institutions is planned for Fall 2012

---

---

---

---

---

---

---

---

### Workforce Project

- \$1 million Federal grant – Workforce Data Quality Initiative – WDQI
- Approved project plan - March 28, 2012
- Data sets include workforce data (UI wage, UI employer, WIA youth, and Workforce 20/20)
- Scheduled completion by 11/30/2013

---

---

---

---

---

---

---

---

### Higher Education Project

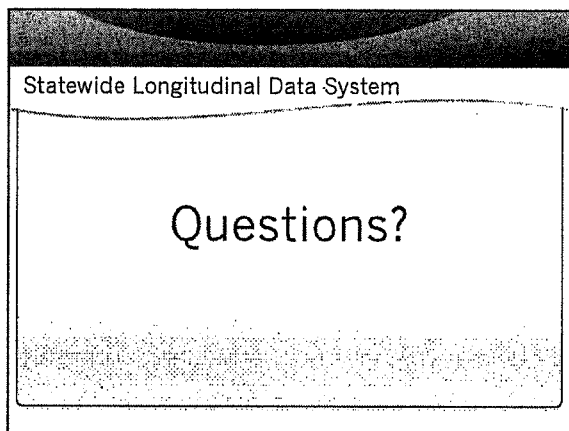
- Applied for \$3.9 m grant
  - Develop automated data extracts to SLDS
  - Identify graduation cohort sets
  - Identify data sets for SLDS needs

### Overall SLDS Project

- \$2 m project
- 85% under budget, 12% behind schedule
- Completed last quarter
  - Hess grant reports
  - Vital records system modified
  - Remediation data received from higher ed
  - Portal expanded to include REAs

### Overall SLDS Project

- In Progress
  - Student ID now being assigned at birth
  - Master person index
  - Determine post secondary data needed
  - Training began April 10<sup>th</sup>
- *Students enrolled in developmental education courses that did not take related courses during the student's final two years of secondary school.*



---

---

---

---

---

---

---