

Interim Higher Education Committee 10/16/12

North Dakota University System

NDUS – Interim Higher Education Committee

PATHWAYS TO STUDENT SUCCESS

Pathways Points Being Worked On

Admissions:

- $(3 \times \text{ACT}) + (20 \times \text{GPA}) + (5 \times \text{HS Core}) + (10 \text{ ND Residency (including MN per reciprocity agreement)})$
 - Cap HS Core at 16 courses
 - If a student does not have the qualifications to be admitted, they may go to a Community College and complete 30 credits with a 2.5 GPA and apply for transfer.

Learning:

- Community colleges and 4-year regional campuses will have the responsibility for the delivery of dual credit courses using a uniform set of criteria as agreed upon by NDUS & DPI.
- Dual credit courses will be charged the same rate set by the SBHE for community colleges and 4 year campuses. Exceptions: Partnership agreements subsidizing instructional costs.

Pathways *Continued*

Accountability:

Per Credit Tuition

- Research Institutions will be per credit through 15 credits – no charge thereafter.
- Regional Universities will assess per-credit hour.
- Community Colleges will assess per-credit hour.
There will be three levels and common rates of per-credit tuition charge based on low-cost, medium-cost, and high-cost programs at all two year campuses.

Pathways *Continued*

Residency Tuition Charges

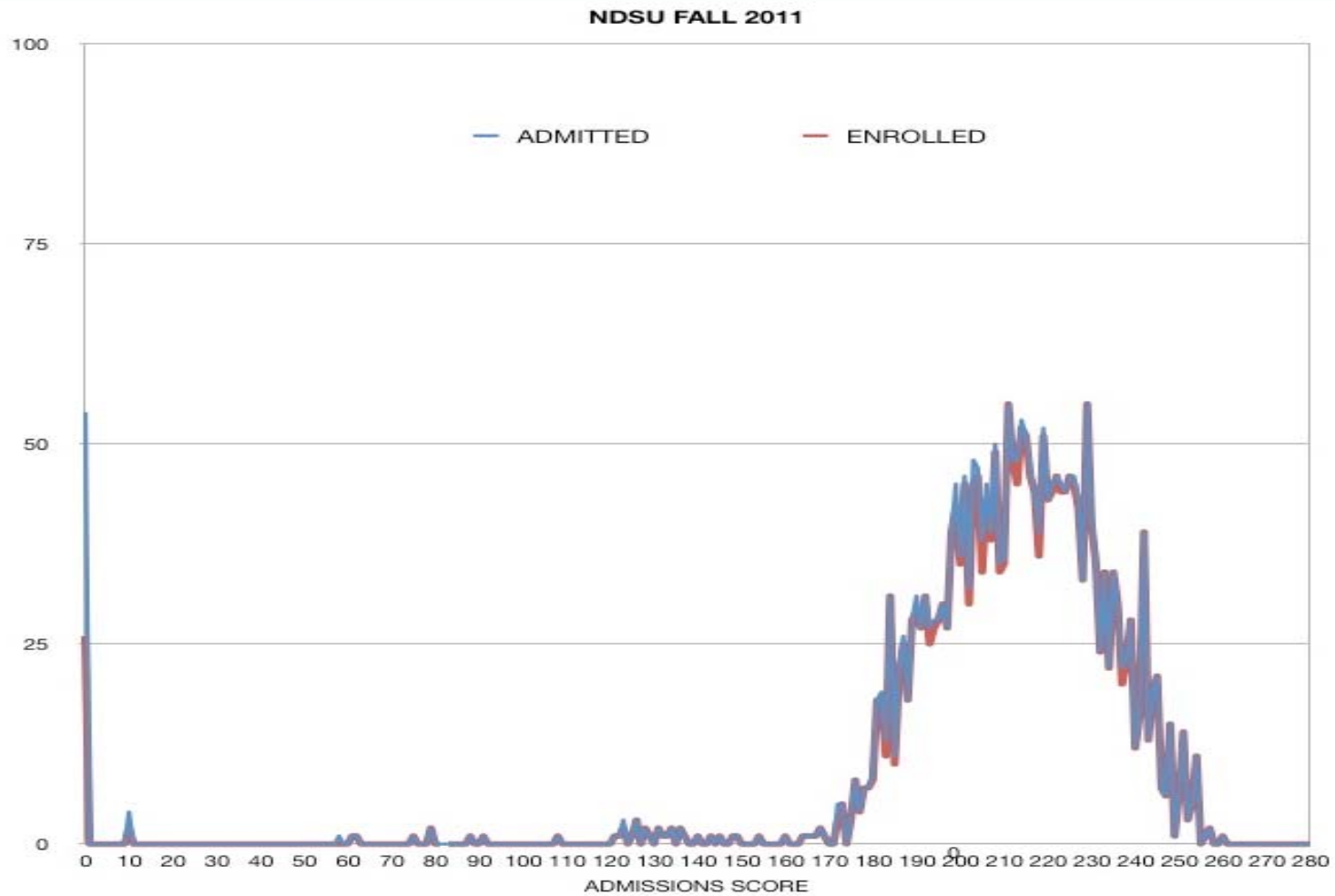
- Community Colleges and Regional institutions will charge based on the following model:
 - 1.0 - In-State (ND Resident)
 - 1.25 – Contiguous states and Canadian provinces
 - 1.50 – MHEC and WICHE consortiums
 - 1.75 – Out of state students and International
 - MN rate per reciprocity agreement
- Research institutions will charge based on the following model:
 - 1.0 - In-State (ND Resident)
 - 1.5 – Contiguous states and Canadian provinces.
 - 1.50 – MHEC and WICHE consortiums
 - 1.75 – Out of state students and International
 - MN rate per reciprocity agreement

Pathways *Continued*

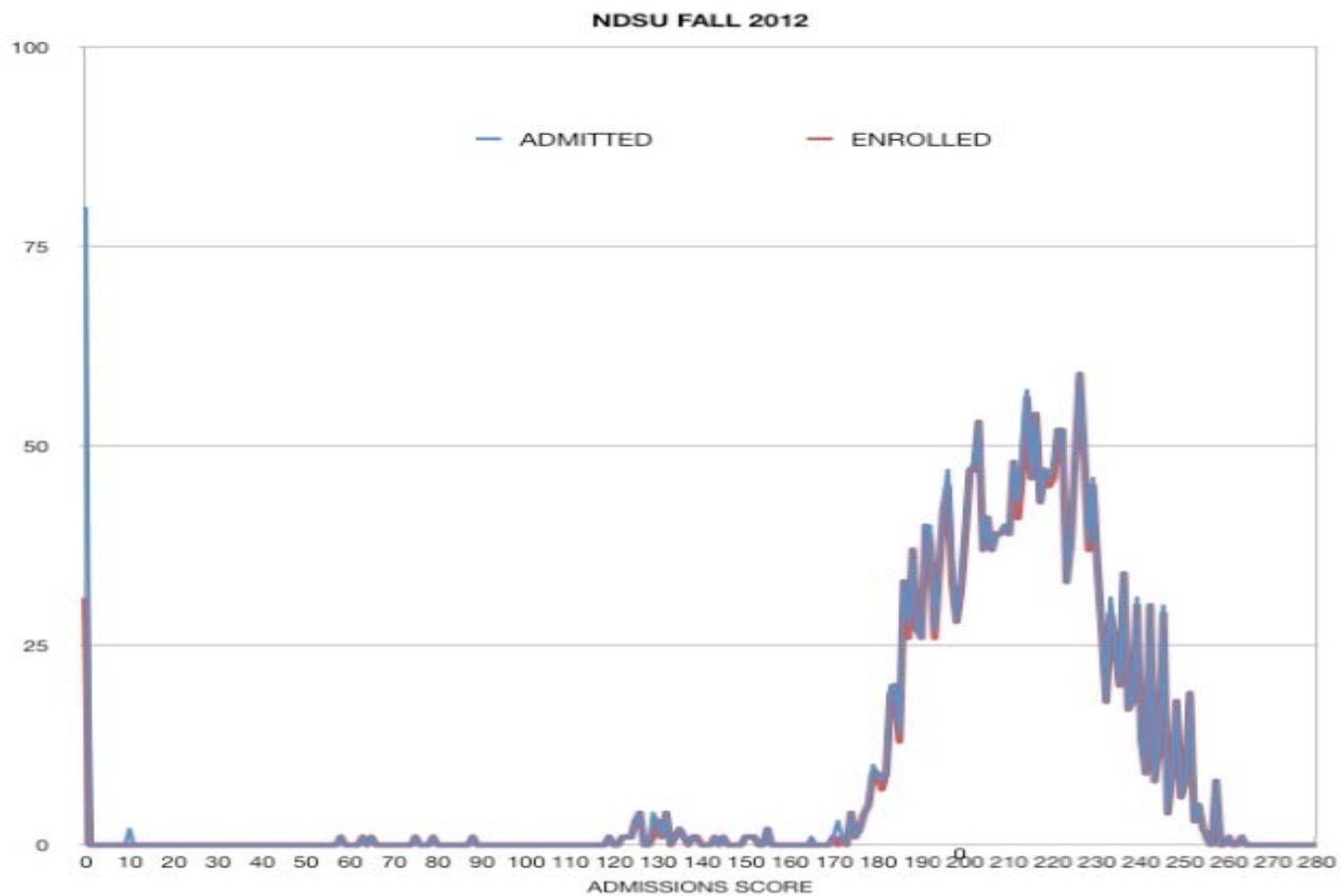
Tuition waivers:

- At all campuses all waivers are not to exceed 5% including Native American students; statutorily required waivers including U.S. Veterans; and, special cases determined by the President.
- Student athlete waivers, employee and employee spouse and dependent tuition waivers are outside the 5% limit at all institutions.

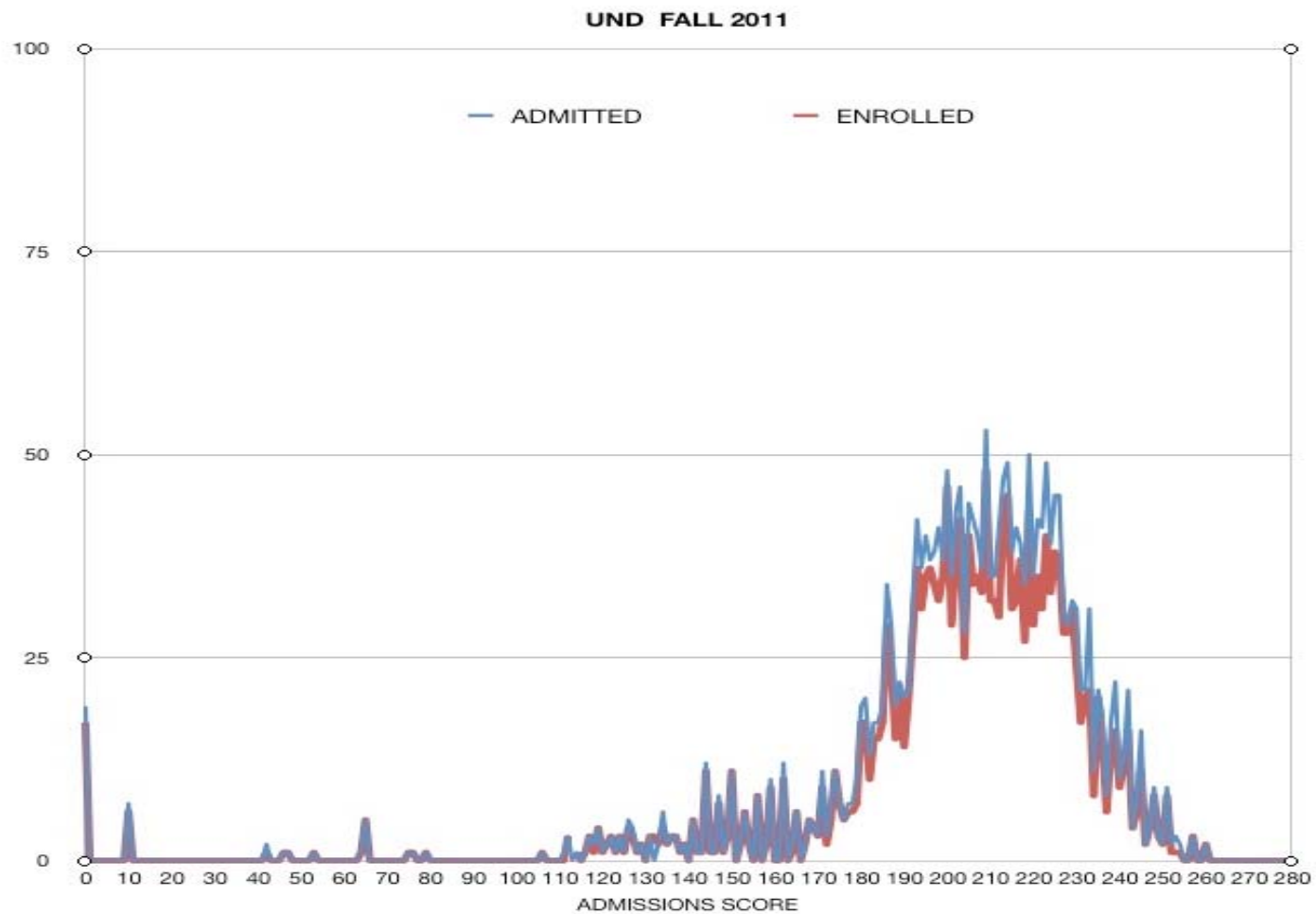
NDSU Fall 2011



NDSU Fall 2012



UND Fall 2011



UND Fall 2012

