

North Dakota Performance Funding Model

Current North Dakota Data Collected and Its
Limitations

POTENTIAL SUCCESS-BASED FUNDING OUTCOMES



Tennessee Outcomes:

Two-year
institutions



Research
institutions

- Certificates awarded
- Job placements
- Workforce training provided
- Remedial education students successfully served
- Associates degrees awarded
- Student credit hour progression
- Successful transfers in/out
- Graduation rate
- Degrees awarded per 100 FTE students
- Bachelor's degrees awarded
- Master's, doctoral, and professional degrees awarded
- Amount of research and grant funding received

Model Proposal Presented

- ✓ **Certificates Awarded***
- ✓ **Associates Degrees Awarded***
- ✓ **Student Credit Hour Progression ***
- ✓ **Successful Transfer in/ out***
- ✓ **Graduation Rate (IPEDS)***
- ✓ **Degree Awarded per 100 FTE Student***
- ✓ **Bachelors awarded ***
- ✓ **Masters Doctoral and Professional Degrees awarded***

Data Available

* Details follow

All Data provided from
Connect ND Student System
unless noted

Workforce Certificates

Job placements

Workforce training Provided

**Amount of research grants and
funding received.**

**Remedial Student Successfully
Served (Definition and
Academic standards needed)**

**Data Not readily
Available**

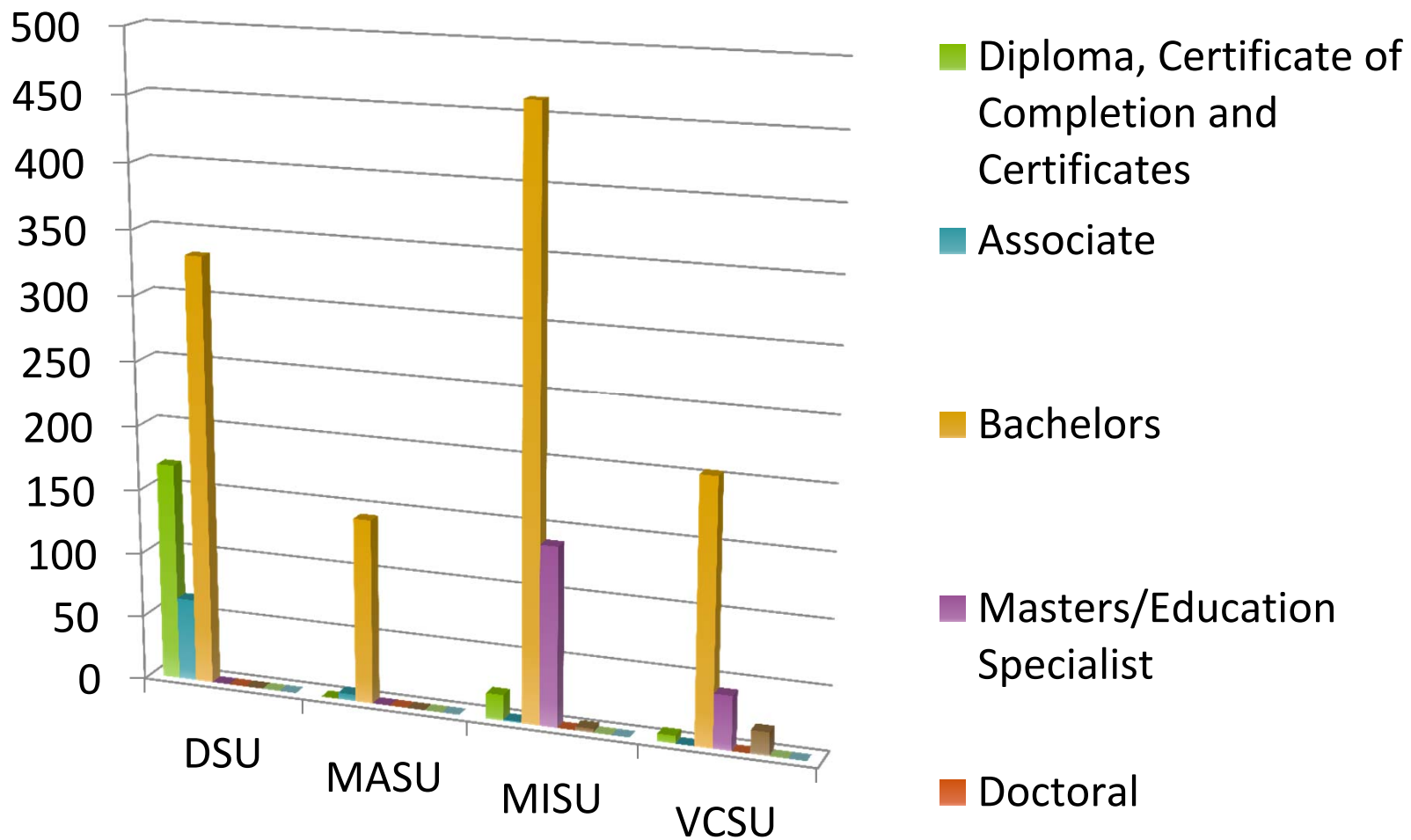
While Data is available as will be seen in the next slides there are limitations.

- ❖ No current systematic way to identify the data consistently
- ❖ Institutions have separate and sometimes different standards for processing information
- ❖ Data is pulled from multiple sources such as IPEDS, Delta Project and other Surveys
- ❖ Insufficient Policy and Data Analysis Staff effects data collection

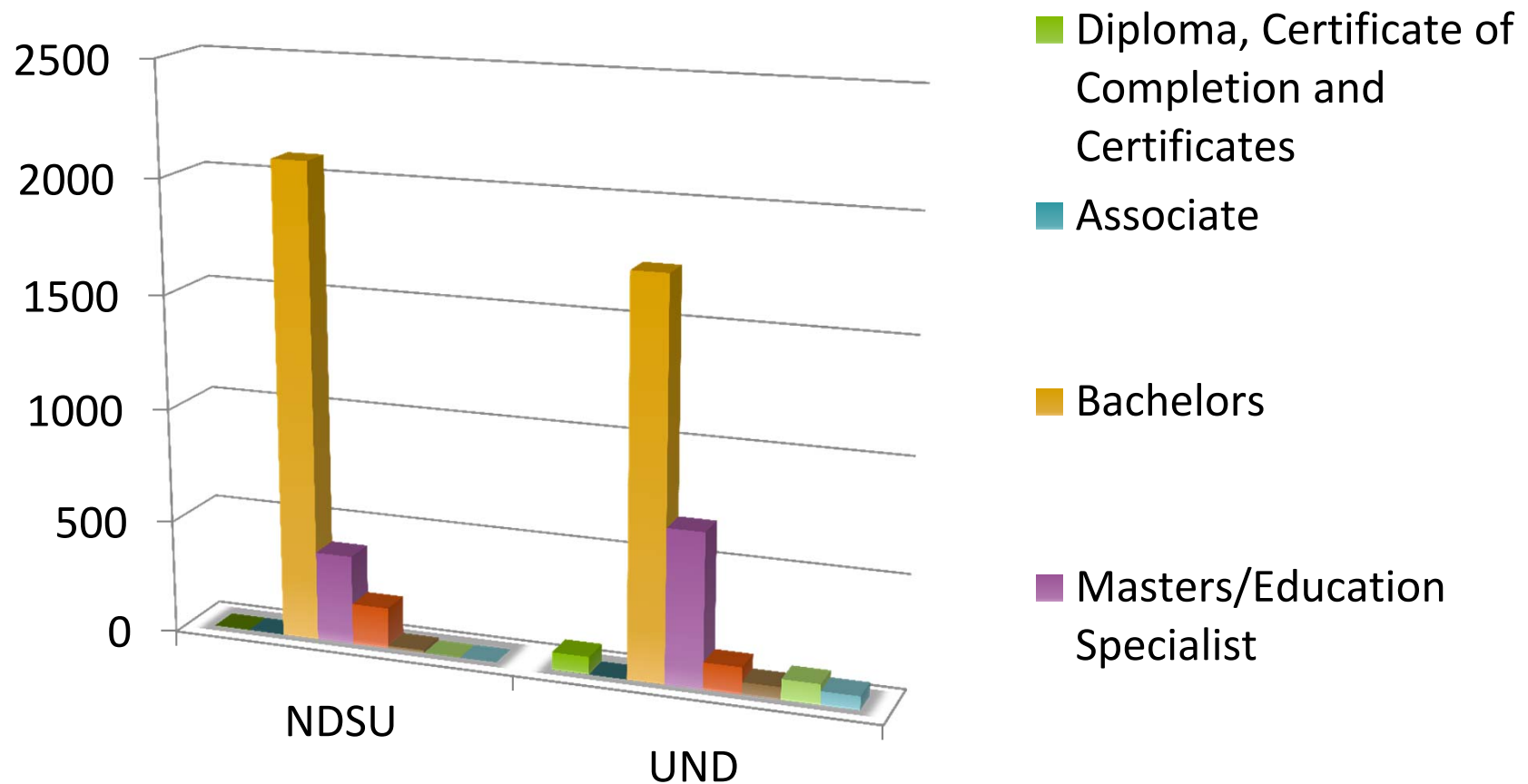
Data available
limitations

- Data of this type must be coordinated across not only institutions but divisions with State and Federal databases.
- The State Longitudinal Data System is a work in progress

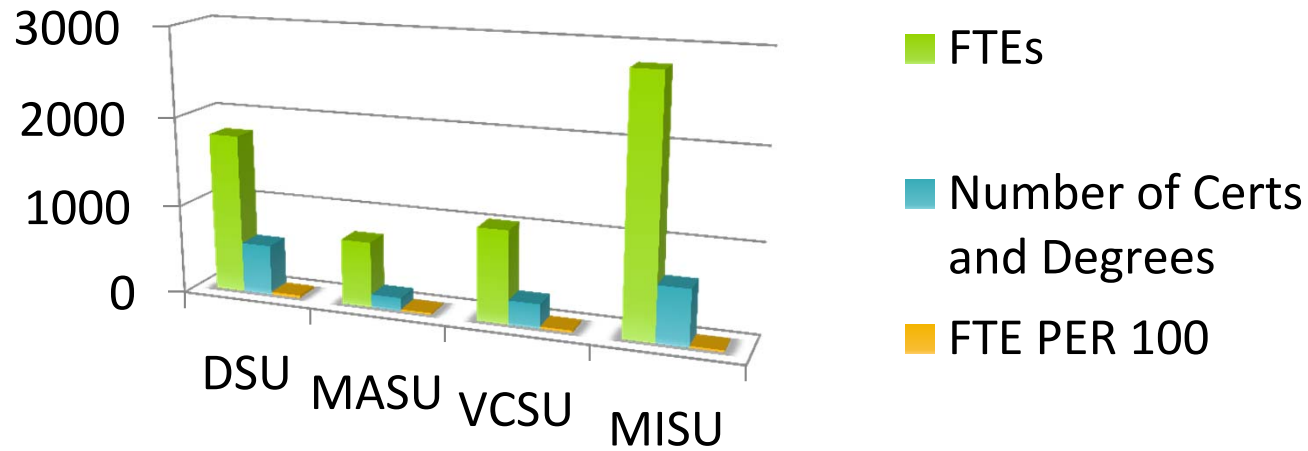
Data Not Readily
Available



Academic Year 11/12 : Certificates and
Degrees Awarded: FOUR YEAR

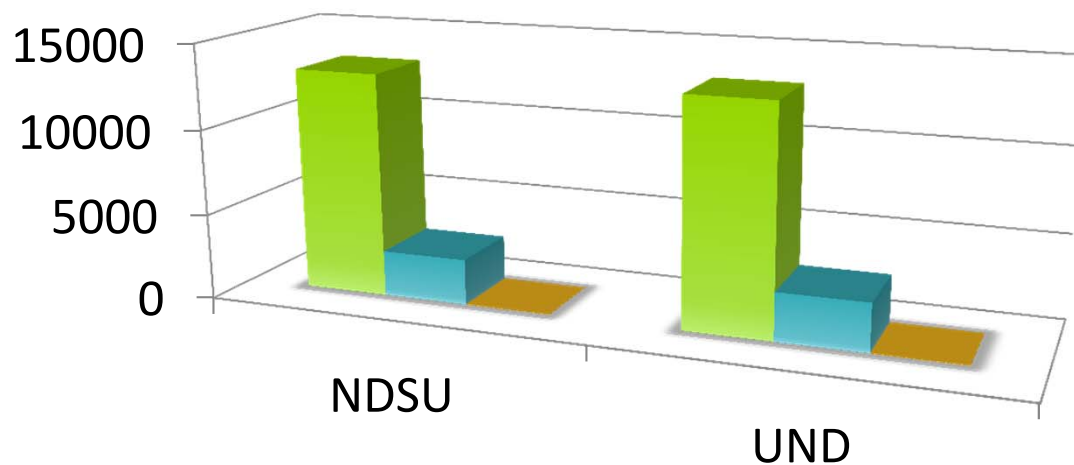


Academic Year 11/12 : Certificates and Degrees
Awarded: RESEARCH



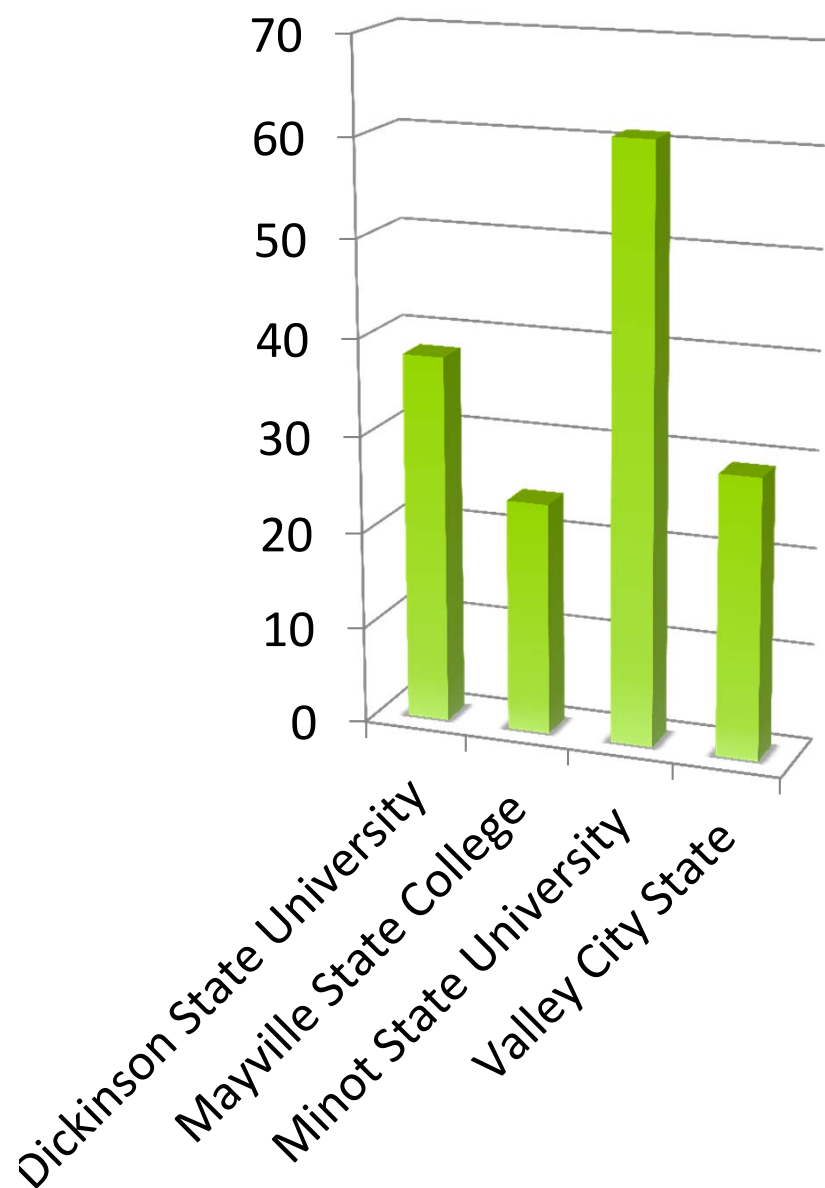
Institution	FTE	#of Degrees	FTE per 100
Dickinson	1781.6	565	31.71
Mayville	733.3	148	20.18
Minot	1033.25	270	26.13
Valley	2804.69	625	22.28

Academic Year 11/12 : DEGREE PER 100 FTE
FOUR YEAR



Institution	FTE	# of Degrees	FTE per 100
NDSU	13145.2	2675	20.35
UND	13220.24	2819	21.32

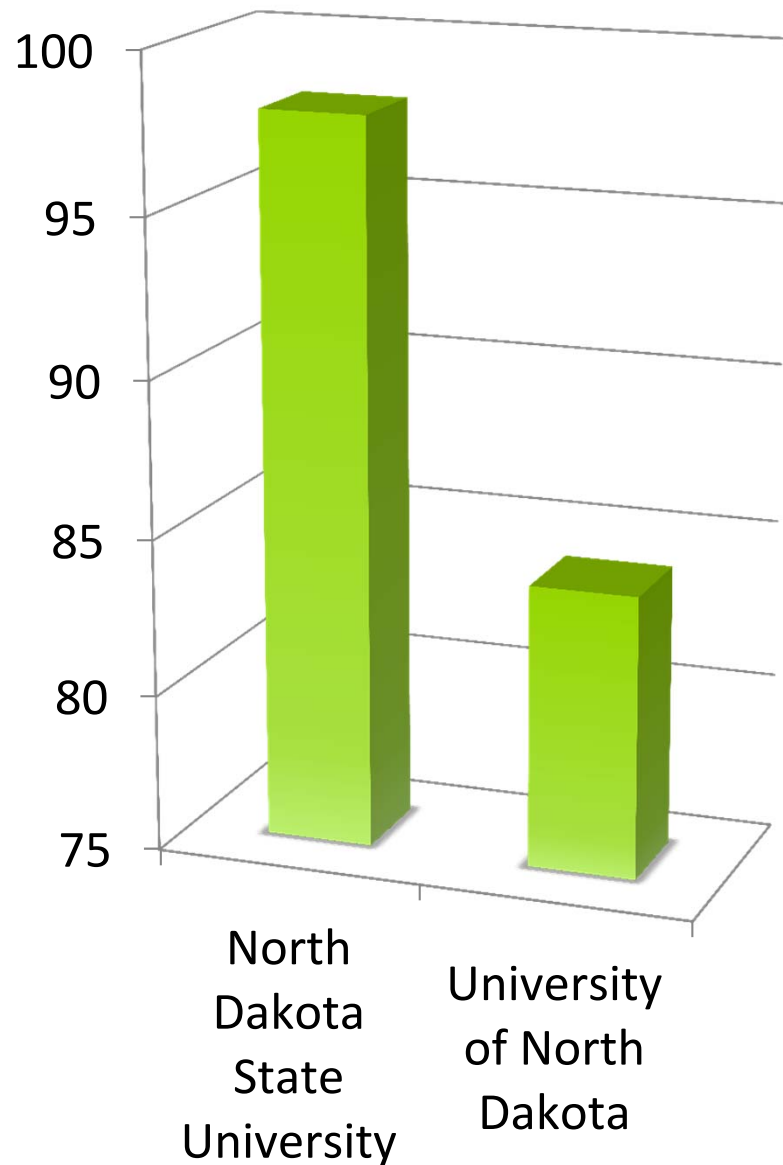
Academic Year 11/12 : DEGREE PER 100 FTE
RESEARCH



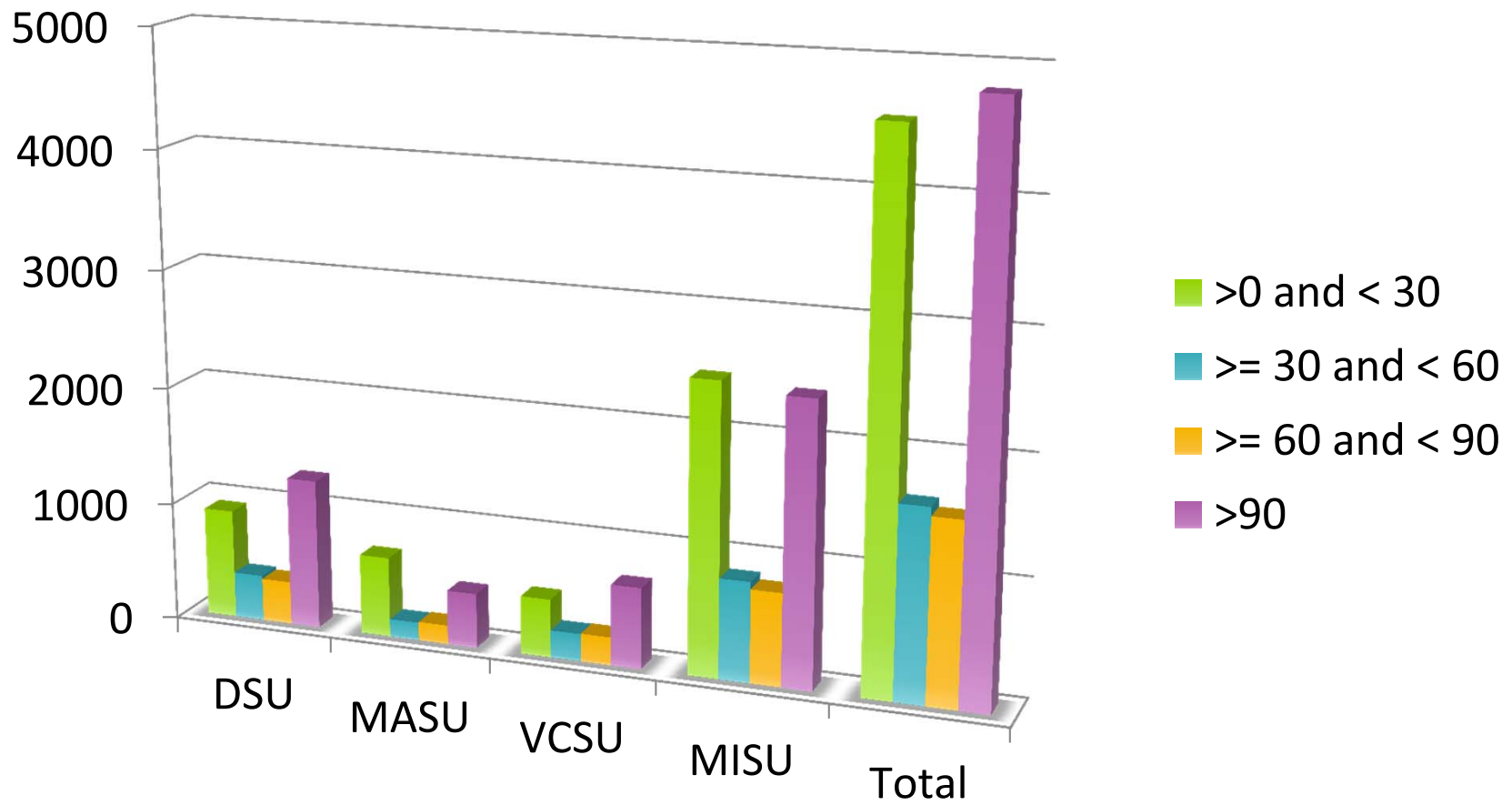
Fall 2011 Transfers From Four Year to Another NDUS Institution

*System Office Transfer
Report: Fall 2011

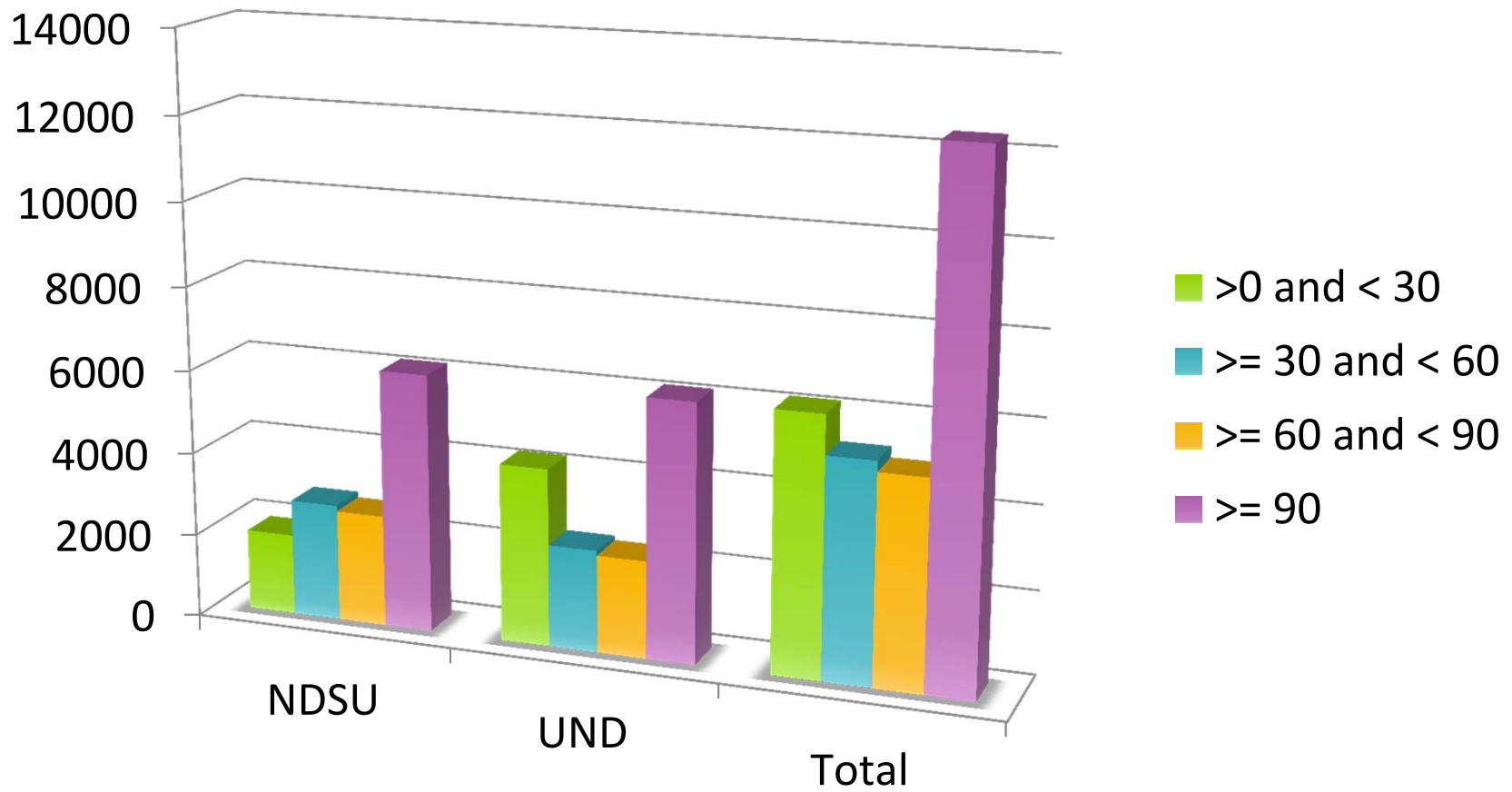
Fall 2011 Transfers From a Research to Another NDUS Institution



*System Office Transfer
Report: Fall 2011



Student
Progression: 4 Year



Student
Progression:
Research

Institution	Rate
Dickinson	Not Available
Mayville	28%
Minot	33%
Valley	42%

4 Year Graduation Rates

(IPEDS 6yr)

Institution	Rate
NDSU	54%
UND	54%

Research Graduation Rates

(IPEDS 6yr)