

North Dakota Legislative Management

Tuesday, September 20, 2011, 10:00 am

Roughrider Room, State Capitol
Bismarck, North Dakota

Testimony on House Concurrent Resolution #3032

Michael H. Gunsch, Vice Chairman - Friends of Lake Sakakawea

Phone 701-527-2134 (cell)

Chairman Lee and members of the committee, I'm Michael Gunsch, Vice Chairman of the Friends of Lake Sakakawea (FOLS). Thank you for agreeing to study the issue of inadequate funding to construct and improve roadways to recreational, tourist and historical sites in North Dakota.

We are here to speak to the scope of the proposed study which will evaluate the need to improve the subject access roadways across the state of North Dakota. While the FOL have and will continue to promote improvements to access roadways around Lake Sakakawea, today we are here to support this “**comprehensive statewide review**”. We understand the demand for roadway funding in the oil producing counties and in high use agricultural areas, however these are not the only statewide and local needs to be considered. In our opinion this study should be utilized to document the value of and need for investment in access roadways. It will also support and justify expenditures to upgrade the sites identified and their ability to provide a return on the investment or intrinsic values to enhance the North Dakota experience, and create a greater sense of pride in what we offer in recreation, historic preservation and tourism to our citizens and visitors.

In order to realize the benefits associated with this investment these roadways need to be inventoried and prioritized to document the necessary improvements, as well as the respective cost and values. This can be accomplished using available information sources including County Engineers, County Park Boards, County Commissioners, local sportsman's groups, state agencies, and others. The study results will provide state and local leaders with recommendations and identify the funding sources necessary for future legislation sessions.

Not all access roadways need to be improved and not all are destined to be converted to pavement. The upgrade might be from a trail to gravel road, or from poor gravel to improved gravel, or from gravel to a hardened surface using stabilization technologies, or from gravel to pavement. All improvements would be based on existing and projected uses, individual site needs and applicable design standards. Should we construct access beyond what the demand and use requires? No, but it is clear if access were improved use will significantly increase and justify the investment. In that regard we are providing you two examples of what we feel the deliverable might look like, the report would summarize these data sheets with recommendations as to future construction and funding methods. The final recommendations will likely be: What should be done, by whom and how much it will cost. We are also providing background data used to develop these data sheets and information on Lake Sakakawea sites.

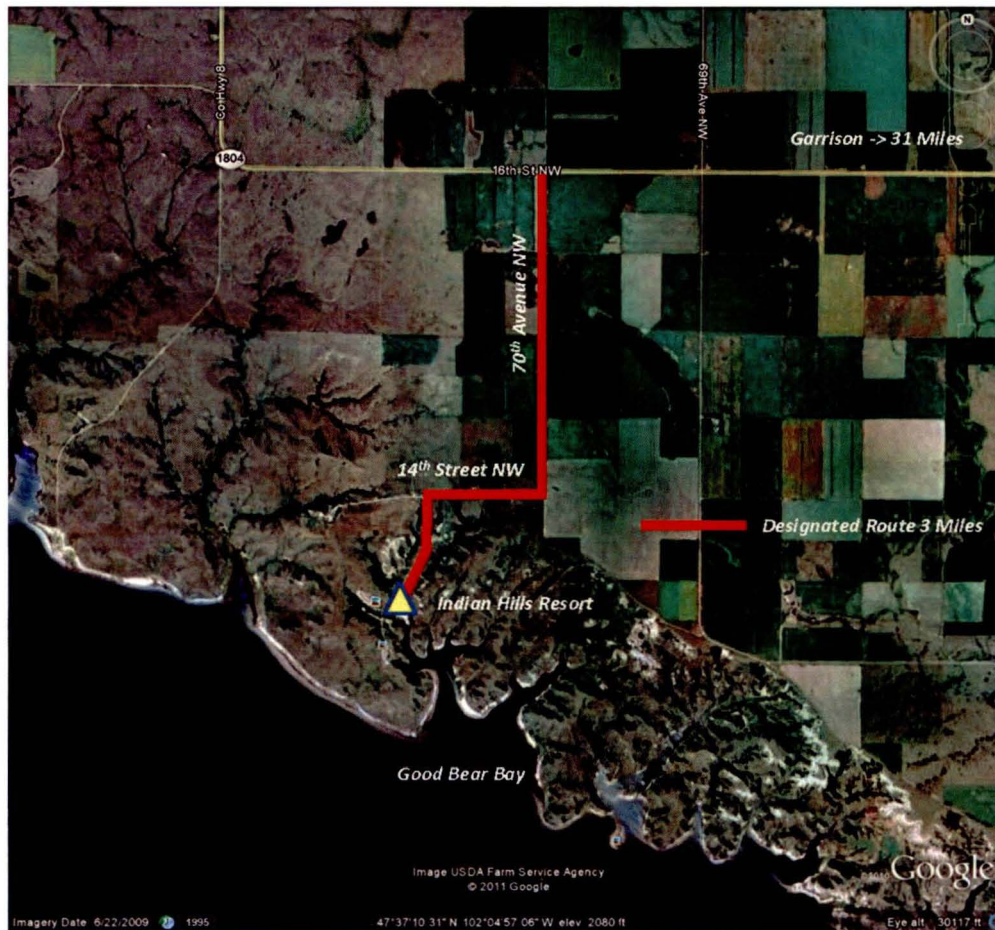
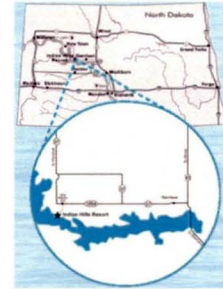
Recreation, Historic and Tourist Sites in North Dakota

Access Roadway Inventory, _____ 2012

Site: Indian Hills Resort

Location: McLean County
31 Miles West of Garrison and 3 Miles South

Business/Landowner: Indian Hills Resort - USACE Lease



CONTACT INFORMATION:

Indian Hills Resort
7276 14th NW
Garrison, ND 58540-9601
Reservations: 701-743-4122
Email: ksorge@btinet.net
www.fishindianhills.com



Number of Annual Visitors: 18,276 (2009) **Source** { }
Average Daily Traffic: _____ ADT

Types of Uses: Campground, Lodging, Boat Ramp, Marina, Fishing, Mountain Biking, etc...

ROADWAY INFORMATION

Designated Access:

Authority: McLean County, BIA, USACE, _____ Township {Multiple}

Type: Gravel {Use NDDOT designations - from trail to paved}

Rated Condition: Rutted (Deteriorated, Poor, Fair, Good, Excellent) {study to create a rating format}

Length: Designated Route – 3 miles

EVALUATION DETERMINATIONS

Recommendation: Re-grade base, widen roadway, gravel base and pave

Opinion of Probable Cost: **\$2,268,000** {Provided by County Engineer, City Engineer, Consultant, other}

Special Issues or Concerns: Other users, _____, etc...

Ranking: Priority, High, Medium, Low, NA = No action required

Funding: 90% State / 10% Local

Designated Life Span: 20 year pavement

Projected Annual O&M Cost: \$ _____ {__% of Construction/Reconstruction Cost}

Annual Cost/User: \$ _____ {shall include non-recreation, historic and tourist uses}

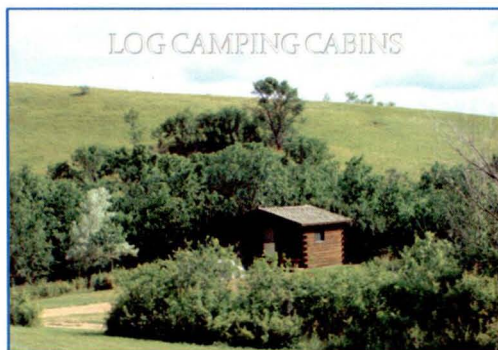
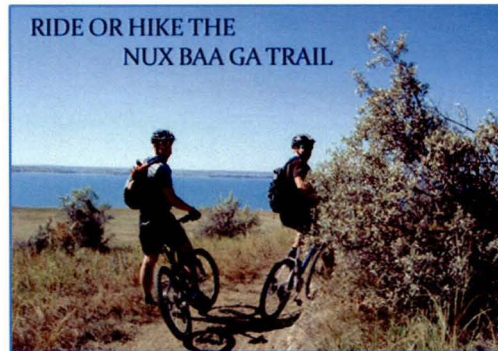
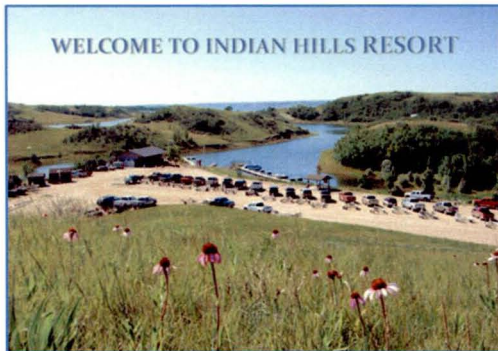
Benefits of Access Improvement: Improved access, increased use, economic values

Projected Increased Use: _____ Visitors/Year {trend lines on available data}

Economic Impact \$ _____

Annual Return on Investment: \$ _____

Special Considerations: Future O&M obligations, Sponsor Support, Community Values



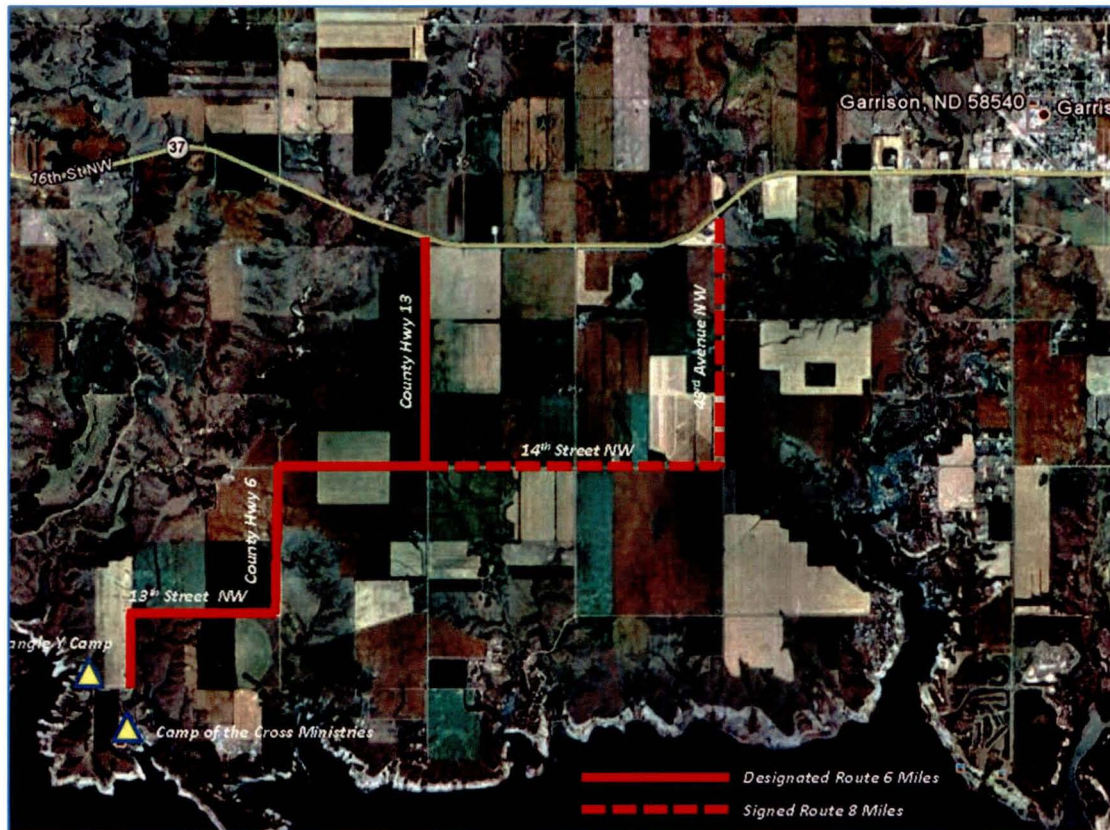
Recreation, Historic and Tourist Sites in North Dakota

Access Roadway Inventory, _____ 2012

Site(s): Camp of the Cross Ministries (ELCA Bible Camp)
Triangle Y Camp (YMCA Minot)

Location: McLean County
6 Miles West and 3 Miles South of Garrison

Business/Landowner: Camp of the Cross - USACE Lease
Triangle Y Camp - USACE Lease



CONTACT INFORMATION:



Triangle Y Camp
Cindy Mueller
1251A 47th Avenue NW
Garrison, ND 58540
P: 701.337.5735
Email
www.triangleycamp.org



Camp of the Cross Ministries
Janis Sloka, Director
1228A 47th NW
Garrison, ND 58540
P: 701.337.2246
Email info@campofthecross.com
www.campofthecross.com

Number of Annual Visitors: 17,258 (2009) **Source** { }
Average Daily Traffic: ADT

Types of Uses: Campground, Retreat Center, Boat Ramp, Fishing, Lodging, etc...

ROADWAY INFORMATION

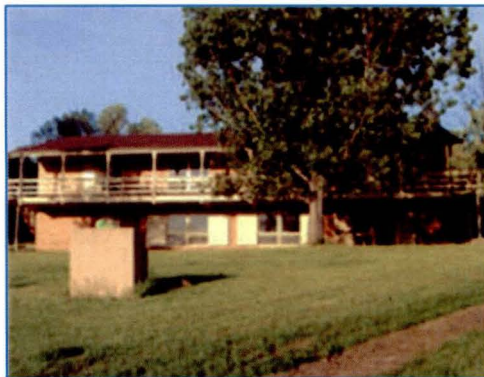
Designated Access: County Hwy 13, 14th Street NW, County Hwy 6, 13th Street NW, 45th Avenue NW
Authority: McLean County, Saint Mary's Township
Type: Gravel Improved {Use NDDOT designations - from trail to paved}
Rated Condition: Rutted (Deteriorated, Poor, **Fair**, Good, Excellent) {study to create a rating format}
Length: Signed Route – 8 miles, **Designated Route – 6 miles**

EVALUATION DETERMINATIONS

Recommendation: Widen where necessary, upgrade gravel base and pave
Opinion of Probable Cost: **\$4,536,000** {Provided by County Engineer, City Engineer, **Consultant**, other}
Special Issues or Concerns: Other users, farm to market, access, etc...
Ranking: **Priority**, High, Medium, Low, NA = No action required
Designated Life Span: 20 year pavement
Funding: 90% State / 10% Local
Projected Annual O&M Cost: \$ _____ {__% of Construction/Reconstruction Cost}
Annual Cost/User: \$ _____ {shall include non-recreation, historic and tourist uses}

Benefits of Access Improvement: Improved access, increased use, economic values
Projected Increased Use: _____ Visitors/Year {trend lines on available data}
Economic Impact: \$ _____
Annual Return on Investment: \$ _____

Special Considerations: Future O&M obligations, Sponsor Support, Community Values



Triangle Y Camp

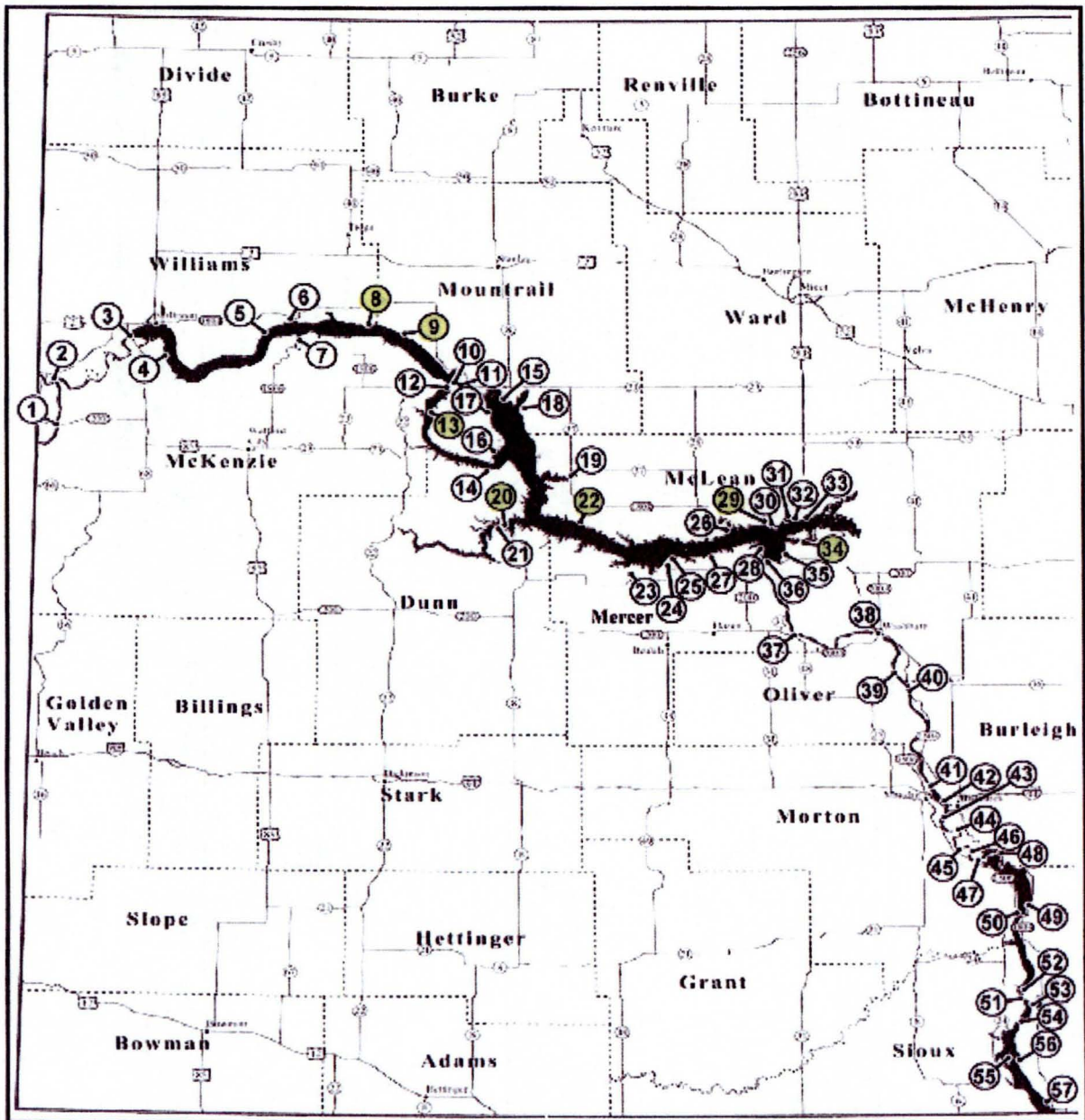


Camp of the Cross Ministries

Friends of Lake Sakakawea

Lake Sakakawea Recreational Access Roadways

Map Location	Location	Managing Agency	Contact Person	Phone	Roadway Type	Number of Visitors	Opinion of Probable Construction Cost
4	Camp of the Cross	Lutheran Bible Camp Assc/Triangle Y Camp	Janis Sloka / ?	337-2246 / ?	County 13 - 6 miles	17,258	\$4,536,000
15	Indian Hills	Parks & Rec/Tribes	Kelly Sorge	743-4122	3 miles gravel	18,276	\$2,268,000
8	Douglas Creek	Corps of Engineers	Linda Phelps	654-7411	County 11 - 8 miles	21,947	\$6,048,000
19	McKenzie Bay	McKenzie Marine Club	Rhonda Logan	579-3366	6 miles gravel	24,558	\$4,536,000
5	Charging Eagle Bay	Three Affiliated Tribes	Jim Mossett	880-1203	10 miles gravel	22,846	\$7,560,000
23	Reunion Bay	Corps of Engineers	Linda Phelps	654-7411	8 miles gravel	3,448	\$6,048,000
13	Hale Marina	Three Affiliated Tribes	James Hale	759-3666	13 miles gravel	Visitors ?	\$9,828,000
32	White Earth Bay	Mountrail County Park Board	Greg Gunderson	755-3277	10 miles gravel	7,048	\$7,560,000
26	Skunk Creek Recreation Area	Three Affiliated Tribes	Ken Danks	290-2841	9 miles gravel	6,555	\$6,804,000
34	Wolf Creek Recreation Area	Corps of Engineers	Linda Phelps	654-7411	5 miles gravel	11,746	\$3,780,000
11	Garrison Creek Cabin Site	Garrison Cabin Assc.	Percy Radke	337-2247	5 miles gravel	Visitors - Cabins	\$3,780,000
27	Sportsmen's Centennial Park	McLean County	Les Korgel	462-8541	3 miles gravel	15,365	\$2,268,000
7	Deepwater Creek (cabin site/ G&F Ramp)	McLean County/ND Game & Fish	Les Korgel / Bob Frohlich	462-8541 / 326-6346	4 miles gravel	na	\$2,268,000
33	Whitetail Bay (Lund's Landing)	Williams County WRD	Beth Innis	572-6373	1 mile gravel	12,208	\$756,000
17	Little Beaver Bay	Williams County WRD	Beth Innis	572-6373	3 miles gravel	4,557	\$2,268,000
25	Sanish Bay (Aftem)	Aftem Lake Development	Gerald Aftem	852-2779	2 miles gravel	Visitors - Cabins	\$1,512,000
7	Deepwater Creek	Corps of Engineers	Linda Phelps	654-7411	1 mile gravel	10,347	\$756,000
28	Steinke Bay	North Dakota Game & Fish	Bob Frohlich	328-6346	2 miles gravel	No data	\$1,512,000
31	West Totten Trail	McLean County	Les Korgel	462-8541	1 mile gravel	1,895	\$756,000
10	Four Bears Park	Three Affiliated Tribes	Alan Chase	627-4018	1 mile gravel	No data	\$756,000
18	Littlefield Bay	North Dakota Game & Fish	Bob Frohlich	328-6346	1 mile gravel	No data	\$756,000
30	Van Hook	Mountrail County Park Board	Rick Folden	898-1157	Paved road	86,907	\$0
24	Sakakawea State Park	ND Parks & Rec	John Tunge	487-3315	Paved road	59,984	\$0
9	Fort Stevenson State Park	ND Parks & Rec	Dick Messerly	337-5576	Paved road	55,348	\$0
3	Beulah Bay	Beulah Park Board	Bev Sullivan	873-5852	Paved road	45,903	\$0
21	Parshall Bay	Mountrail County Park Board	Rick Folden	898-1157	Paved road	42,857	\$0
6	Dakota Waters Resort	Beulah Park Board	Kelvin Heinsen	873-5800	Paved road	38,438	\$0
14	Hazen Bay	Hazen Park Board	Joe Amundson	748-5958	Paved road	28,809	\$0
12	Government Bay	Corps of Engineers	Linda Phelps	654-7411	Paved road	24,834	\$0
16	Lewis And Clark State Park	North Dakota Game & Fish	Al Larson	859-3071	Paved road	16,397	\$0
20	New Town	New Town Park Board	Dusty Rhoads	627-3900	Paved road	13,947	\$0
2	Beaver Bay	Zap Park Board	Bill Mindt	948-2817	Paved road	13,671	\$0
22	Pouch Point	Three Affiliated Tribes	Annette Youngbird	627-8204	Paved road	12,995	\$0
29	Tobacco Garden Creek Bay	McKenzie County Park Board	Frances Olson	444-3616	Paved road	10,101	\$0
1	American Legion Park (Raums)	American Legion			Paved road	7,937	\$0
Total Annual Visitation						636,182	\$76,356,000



SUGGESTED PRIORITIZATION FOR PAVING ROADWAYS 2009 - 2012

29 CAMP OF THE CROSS / TRIANGLE "Y" CAMP (6 MILES)	\$ 4,536,000
22 INDIAN HILLS (4 MILES)	\$ 3,024,000
20 MCKENZIE BAY (6 MILES)	\$ 4,536,000
13 REUNION BAY (8 MILES)	\$ 6,048,000
9 WHITE EARTH BAY (10 MILES)	\$ 7,560,000
34 WOLF CREEK RECREATION AREA (5 MILES)	\$ 3,780,000
8 LITTLE BEAVER BAY (3 MILES)	\$ 2,268,000
<u>TOTAL</u>	<u>\$ 31,752,000</u>

This list was compiled and prioritized from the thirty-four unpaved access roadways to Lake Sakakawea based on current roadway conditions, number of annual visitors, cabin sites, business proximity, and a distribution of access around the lake.

SPECIAL ROAD FUND - 2009 FUNDING

	County City Agency	Project	SRF Eligible Costs	SRF Request (1)
1	Barnes County	Sibley - Repair asphalt roadway and seal coat	\$11,000	\$6,600
2	Bottineau County	Lake Metigoshe - Seal coat of access roads to cabin sites	\$325,000	\$195,000
3	Emmons County	Cattail Bay - Reconstruction and paving of access road	\$406,750	\$244,050
4	Gafton	Lavergne Ave - Construction of curb & gutter street	\$244,500	\$146,700
5	Kidder County	Lake Isabel access road - Reshape and gravel	\$19,750	\$11,850
6	McIntosh County	Doyle Memorial State Park - Asphalt overlay	\$284,250	\$170,550
7	McLean County	Brush Lake Pavilion road - Microsurfacing (repair of roadway surface)	\$98,128	\$58,877
8	Morton County	Harmon Lake - Asphalt paving of access road	\$395,080	\$237,048
9	Mountrail County	Parshall Bay Road - Microsurfacing (repair of roadway surface)	\$307,000	\$184,200
10	NDP&RD	Turtle River St Park - Asphalt overlay on entrance road and seal coat	\$874,108	\$250,000
11	SHSND	Standing Rock Historic Site - Repair access road from ND 46	\$19,952	\$11,971
12	Williams County	Ft Buford - Asphalt overlay of access road	\$120,000	\$72,000
Total			\$3,105,518	\$1,588,846

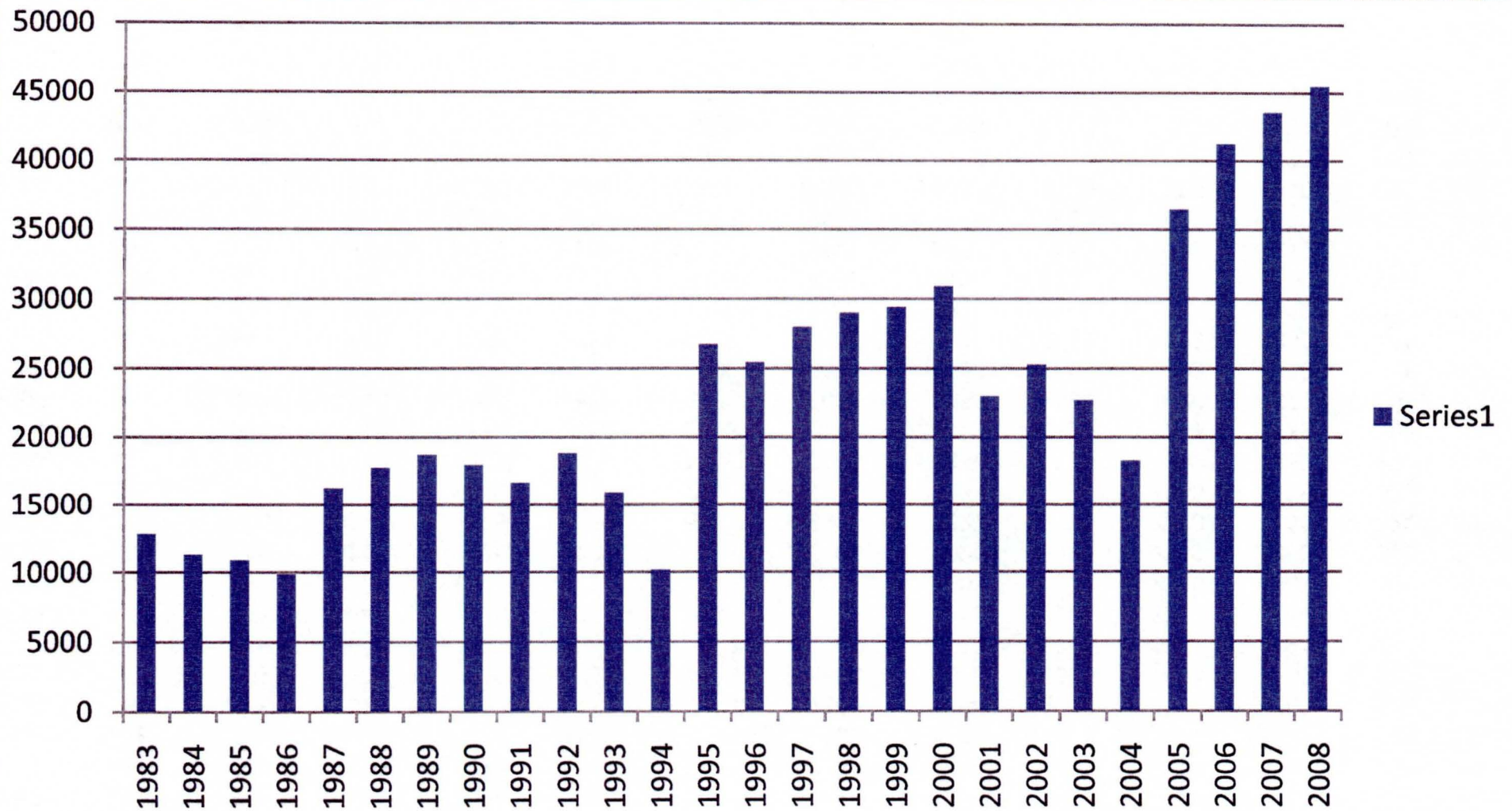
1 - \$250,000 maximum allowable per project

Special Road Fund - December 17, 2010 applications

	County City Agency	Project	SRF Eligible Costs	SRF Request (1)
1	Bottineau Co.	Lake Metigoshe - Seal coat of some lake area roads	\$114,000	\$68,400
2	Devils Lake	Roosevelt Park - Repair of park roadways	\$139,321	\$83,593
3	Dunn Co.	Dunn Center to Little Missouri Bay access road asphalt overlay	\$1,657,391	\$250,000
4	Emmons Co.	Cattail Bay - Grading, gravelling, and paving access road from ND 1804	\$1,991,862	\$150,000
5	Grafton	Lavergne Avenue - access road to school and athletic fields	\$244,700	\$73,410
6	LaMoure Co.	Lake LaMoure - Seal coat of access road	\$14,350	\$8,610
7	Mercer Co.	Beulah Bay - Asphalt overlay of bay area roads	\$528,468	\$250,000
8	Minnewaukan	Minnewaukan access road to school and athletic fields	\$365,000	\$219,000
9	Morton Co.	Harmon Lake - Paving access road	\$698,660	\$250,000
10	Williams Co.	Missouri Yellowstone Confluence access roads - Hot Bituminous overlay	\$250,000	\$150,000
Total			\$5,889,752	\$1,434,613

1 - \$250,000 maximum allowable per project

VAN HOOK TRAFFIC COUNTS



Van Hook Traffic Counts

Year	Jan	Feb	Mar	April	May	June	July	Aug	Sept	Oct	Nov	Dec	Total
1983	186	287	229	220	1814	2201	7220	7409	4400	1118	323	201	25608
1984	216	294	346	350	1112	4015	3857	4008	4577	3117	396	315	22603
1985	266	345	330	812	1732	2178	7866	4344	2630	590	382	323	21798
1986	275	362	114	826	1756	1786	7883	2888	2505	614	400	345	19754
1987	356	365	512	862	2061	8122	9151	4778	3779	1479	621	345	32431
1988	350	375	440	900	4081	7093	6975	7253	3986	3280	480	310	35523
1989	350	275	500	1024	4176	7063	10174	7361	3483	2340	400	300	37446
1990	350	310	200	624	3762	7021	10108	7021	3490	2340	400	300	35926
1991	364	300	290	175	3255	6874	9975	6827	2171	2300	411	322	33264
1992	375	290	350	646	4614	7014	11786	7772	2065	1986	425	330	37653
1993	425	400	420	893	2399	7500	9095	7654	1756	532	350	390	31814
1994	180	220	270	830	3120	3556	4777	4122	2300	531	325	188	20419
1995	380	400	510	1570	4362	16151	15639	8850	3598	1020	670	385	53535
1996	420	410	530	1600	2417	15766	12671	11609	3655	693	720	435	50926
1997	350	410	580	1620	2734	17858	16100	11840	2050	1369	680	415	56006
1998	340	450	540	1647	4092	16239	18120	11960	2163	1380	710	430	58071
1999	320	480	510	1700	4100	15739	18360	12120	3030	1370	680	450	58859
2000	300	420	570	1640	5261	15965	18821	12925	3165	1573	816	410	61866
2001	290	460	540	1805	3805	7889	12151	12544	3081	1890	990	532	45977
2002	350	250	580	1990	3794	7395	18202	10803	3430	2250	1010	560	50614
2003	370	600	670	2189	869	5805	16326	11110	3429	2450	1030	555	45403
2004	450	610	690	2165	1122	6095	6305	10900	3780	2700	1184	575	36576
2005	260	610	690	1500	1122	6050	10858	7431	3459	2715	1192	580	36467
2006	265	610	780	1500	1340	12254	10566	6593	2144	3188	1350	700	41290
2007	360	600	890	1875	4553	10959	9219	6583	3324	3188	1350	700	43601
2008	600	895	895	1862	5432	13815	8016	6594	3324	3001	750	365	45549

Lake Sakakawea

2006 Creel Survey - Boat Trailer Counts

Boat Ramp	Totals	Percent
American Legion Park	0	0.0%
Beaver Bay	795	5.3%
Beulah Bay	909	6.1%
Charging Eagle Bay	403	2.7%
Confluence	24	0.2%
Dakota Waters	753	5.0%
Deep Water Bay	911	6.1%
Douglas Bay	342	2.3%
Four Bears	297	2.0%
Ft Stevenson	1,173	7.8%
Government Bay	672	4.5%
Hazen Bay	422	2.8%
Hwy 85 Bridge	16	0.1%
Indian Hills	609	4.1%
Lake Sakakawea State Park	1,328	8.8%
Lewis and Clark	3	0.0%
Little Beaver Bay	15	0.1%
Little Knife	0	0.0%
Little Muddy	3	0.0%
McKenzie Bay	835	5.6%
New Town	3	0.0%
Parshall Bay	1,299	8.6%
Pouch Point	732	4.9%
Reunion Bay	95	0.6%
Sanish Bay	114	0.8%
Skunk	537	3.6%
Sportsmens Park	332	2.2%
Steinkes	41	0.3%
Sundheim	5	0.0%
Van Hook	1,949	13.0%
White Earth Bay	153	1.0%
White Tail Bay	2	0.0%
Wolf Creek	250	1.7%
	15,022	100%

Missouri River Boat Ramp Locations and Access –

Lake Sakakawea:

1. SUNDHEIM PARK – 2 miles west of Cartwright on ND Highway 200, on the west side of the Yellowstone River and on the south side of ND Highway 200. (Paved access road, no courtesy docks, primitive camping, security lights, picnic shelter – Sundheim Park Board).

2. CONFLUENCE AREA – 1.5 miles south of Buford on ND Highway 1804. (Paved access road, primitive camping, security lights, picnic shelter, trash receptacles – Williams County WRD).

3. LEWIS AND CLARK BRIDGE – 4 miles west of Williston on U.S. Highway 2, 3 miles south on U.S. Highway 85, on the south side of the Missouri River, and on the east side of U.S. Highway 85. (Paved access road, no courtesy docks, primitive camping, security lights, picnic shelter – Williams County WRD).

4. AMERICAN LEGION PARK (RAUMS) – 4 miles west of Williston on U.S. Highway 2, 6 miles south on U.S. Highway 85, then 4 miles east. (Gravel access road, no courtesy docks, developed camping, security lights, picnic shelter, trash receptacles – American Legion Post 37).

5. LEWIS AND CLARK STATE PARK – 16 miles east of Williston on ND Highway 1804, then 3 miles south. (Paved access road, fish cleaning facility, developed and primitive camping, security lights, picnic shelter, trash receptacles, concession, lodging, access fee, telephone, RV dump station – North Dakota Parks and Recreation).

6. WHITETAIL BAY (LUNDS LANDING) – 22 miles east of Williston on ND Highway 1804. (Paved access road, developed camping, security lights, picnic shelter, trash receptacles, concession, lodging, boat rental, telephone – Williams County WRD).

7. TOBACCO GARDEN CREEK BAY – 2 miles east of Watford City on ND Highway 23, then 25 miles north and east on ND Highway 1806. (Paved access road, fish cleaning facility, developed and primitive camping, security lights, picnic shelter, trash receptacles, concession, lodging, telephone, RV dump station – McKenzie County Park Board).

8. LITTLE BEAVER BAY – 32 miles northwest of New Town on ND Highway 1804, then 3 miles south. (Gravel access road, developed and primitive camping, security lights, picnic shelter, trash receptacles – Williams County WRD).

9. WHITE EARTH BAY – 28 miles northwest of New Town on ND Highway 1804, then 2 miles south, 1 mile east, 3 miles south, 3 miles east. (Gravel access road, fish cleaning facility, developed and primitive camping, security lights, picnic shelter, trash receptacles, concession, telephone, RV dump station – Mountrail County Park Board).

10. SANISH BAY (AFTEM) – 1 mile north, 2 miles west of New Town. (Gravel access road, no restrooms – New Town Park Board/Afterem Development).

11. NEW TOWN MARINA – 2 miles west of New Town on ND Highway 23. (Paved access road, fish cleaning facility, developed and primitive camping, security lights, picnic shelter, trash receptacles, concession, telephone, RV dump station – New Town Marina Association).

12. FOUR BEARS – 4 miles west of New Town on ND Highway 23. (Paved access road, fish cleaning facility, developed and primitive camping, security lights, picnic shelter, trash receptacles, concession, lodging, telephone, RV dump station – Three Affiliated Tribes).

13. REUNION BAY – 2 miles west, 5.5 miles south, 4 miles west of New Town. (Gravel access road, no restrooms, no courtesy docks, primitive camping – U. S. Army Corps of Engineers).

14. SKUNK BAY – 14 miles northeast of Mandaree. (Gravel access road, developed and primitive camping, trash receptacles, concession, lodging, telephone, RV dump station – Three Affiliated Tribes/Roads Maker, Inc.).

15. VAN HOOK – 5 miles east of New Town on ND Highway 23, then 2 miles south. (Paved access road, fish cleaning facility, developed and primitive camping, security lights, picnic shelter, trash receptacles, concession, telephone, RV dump station – Mountrail County Park Board).

16. POUCH POINT – 7 miles south, 2 miles east, 2 miles south, 1 mile east, 3 miles south of New Town. (Paved access road, no courtesy docks, primitive camping, security lights, picnic shelter, trash receptacles, concession, telephone – Three Affiliated Tribes).

17. LITTLEFIELD BAY – 5 miles south, 2 miles east of New Town. (Gravel access road, no restrooms, no courtesy docks, primitive camping – Game and Fish Department).

18. PARSHALL BAY – 3 miles west, 1 mile south, 3 miles west, 1 mile south, 2 miles west of Parshall. (Paved access road, fish cleaning facility, developed and primitive camping, security lights, picnic shelter, trash receptacles, concession, boat rental, telephone, RV dump station – Mountrail County Park Board).

19. DEEP WATER CREEK BAY – 14 miles south of Parshall on ND Highway 37, then either 1 mile south to the corps ramp or 2.5 miles west and .5 miles south to the county ramp. (Gravel access road, primitive camping, security lights, picnic shelter, trash receptacles – U.S. Army Corps of Engineers/McLean County Park Board).

20. MCKENZIE BAY – 22 miles southeast of Mandaree. (Gravel access road, fish cleaning facility, developed and primitive camping, security lights, picnic shelter, trash receptacles, concession, lodging, telephone, RV dump station – Watford City Park Board).

21. CHARGING EAGLE BAY – 12 miles north of Halliday on ND Highway 8, then 10 miles west on BIA No. 22. (Gravel access road, no restrooms, primitive camping, trash receptacles – Three Affiliated Tribes).

22. INDIAN HILLS RESORT – 11 miles west of White Shield on ND Highway 1804, then 3 miles south. (Paved access road, fish cleaning facility, developed and primitive camping, security lights, picnic shelter, trash receptacles, concession, lodging, boat rental, telephone, RV dump station – ND Parks and Recreation/Three Affiliated Tribes).

23. BEAVER CREEK BAY – 12 miles north of Zap. (Paved access road, primitive camping, trash receptacles – Zap City Park Board).

24. DAKOTA WATERS RESORT – 15 miles north of Beulah. (Paved access road, fish cleaning facility, developed and primitive camping, security lights, picnic shelter, trash receptacles, concession, lodging, boat rental, telephone, RV dump station – Dakota Waters Resort).

25. BEULAH BAY – 17 miles north of Beulah. (Paved access road, fish cleaning facility, primitive camping, security lights, picnic shelter, trash receptacles, lodging, telephone, RV dump station – Beulah City Park Board).

26. DOUGLAS CREEK BAY – 5 miles south, 4 miles east of Emmet to corps ramp, or 2 miles south, 1 mile east, 1 mile south of Emmet to county ramp. (Gravel access road, primitive camping, security lights, trash receptacles – U.S. Army Corps of Engineers/McLean County Park Board).

27. HAZEN BAY – 14 miles north of Hazen. (Paved access road, fish cleaning facility, developed and primitive camping, security lights, picnic shelter, trash receptacles, lodging, telephone, RV dump station – Hazen City Park Board).

28. LAKE SAKAKAWEA STATE PARK – Just east and north of Pick City. (Paved access road, fish cleaning facility, developed and primitive camping, security lights, picnic shelter, trash receptacles, concession, lodging, boat rental, access fee, telephone, RV dump station – North Dakota Parks and Recreation).

29. GARRISON CREEK – 2 miles west of Garrison on ND Highway 37, 3 miles south, 1 mile east. (Gravel access road, no restrooms – Garrison Cabin Association).

30. FORT STEVENSON STATE PARK – 3 miles south of Garrison. (Paved access road, fish cleaning facility, developed and primitive camping, security lights, picnic shelter, trash receptacles, concession, lodging, boat rental, access fee, telephone, RV dump station – North Dakota Parks and Recreation).

31. STEINKE BAY – 3 miles west of the junction of ND Highway 37 and U.S. Highway 83, then 2 miles south. (Gravel access road, primitive camping – McLean County Park Board).

32. SPORTSMENS CENTENNIAL PARK – 1 mile west of the junction of ND Highway 37 and U.S. Highway 83, then 2 miles south, 1 mile west. (Gravel access road, fish cleaning facility, developed and primitive camping, security lights, picnic shelter, trash receptacles, concession, telephone – McLean County Park Board).

33. WEST TOTTEN TRAIL – 7 miles north of Coleharbor on U.S. Highway 83, then .5 miles west, or 2 miles south of the junction of U.S. Highway 83 and ND Highway 37, then .5 miles west. (Gravel access road – McLean County Park Board).

34. WOLF CREEK – 1 mile east of Riverdale on ND Highway 200, then 2 miles north, 1 mile east, 1 mile north, .5 miles east. (Gravel access road, fish cleaning facility, primitive camping, security lights, picnic shelter, trash receptacles, RV dump station – U.S. Army Corps of Engineers).

35. GOVERNMENT BAY – Just north of Riverdale. (Paved access road, fish cleaning facility, developed and primitive camping, security lights, trash receptacles – U.S. Army Corps of Engineers).

36. GARRISON DAM TAILRACE – Below the Garrison Dam west and south of the federal fish hatchery. Campgrounds located south of fish hatchery. (Paved access road, fish cleaning facility, developed camping, security lights, trash receptacles – U.S. Army Corps of Engineers).

Garrison Dam – South along the Missouri River:

37. UPA SITE (STANTON) – Just west of UPA power plant on ND Highway 200A near Stanton.

(Paved access road, no courtesy docks, security lights, trash receptacles – City of Stanton).

38. WASHBURN – On the east side of the Missouri River near Washburn, north of ND Highway 200A bridge. (Paved access road, fish cleaning facility, primitive camping, security lights, picnic shelter, trash receptacles, RV dump station – Washburn City Park Board).

39. SANGER (CROSS RANCH) – Just east of Sanger townsite on west side of Missouri River.

(Gravel access road, no courtesy docks, primitive camping, picnic shelter, trash receptacles, access fee – North Dakota Parks and Recreation).

40. STECKEL BOAT LANDING (WILTON) – 22 miles north of Bismarck on ND Highway 1804 or 5.5 miles west, 1 mile south, and 1.5 miles west of junction of ND highways 3 and 36. (Paved access road, primitive camping, picnic shelter, trash receptacles – Burleigh County Park Board).

41. KNIEFEL LANDING – On the east side of the Missouri River near Bismarck, 3 miles north of the Interstate 94 bridge on River Road, then 1 mile west. (Paved access road, no restrooms, security lights, trash receptacles, concession – Burleigh County Park Board).

42. GRANT MARSH BRIDGE – On the east side of the Missouri River near Bismarck, south side of the Interstate 94 bridge on River Road. (Paved access road, security lights, trash receptacles, telephone – Bismarck Parks and Recreation).

43. FOX ISLAND PARK – From Washington Street, .75 miles west on Riverwood Drive (1 block south of Expressway), 1.5 miles south and .5 miles west. Heavy pleasure boat use in summer. (Paved access road, fish cleaning facility, security lights, trash receptacles – Bismarck Parks and Recreation).

44. GENERAL SIBLEY PARK – South of Bismarck on Washington Street. Ramp may present problems for large boats when river is low. (Paved access road, no courtesy docks, developed and primitive camping, security lights, picnic shelter, trash receptacles, RV dump station – Bismarck Parks and Recreation).

45. LITTLE HEART BOTTOMS (SCHMIDT) – 11 miles south of Mandan on ND Highway 1806 then 1 mile north. (Paved access road, trash receptacles – Morton County Park Board).

46. KIMBALL BOTTOMS (DESERT) – 8 miles south of Bismarck on ND Highway 1804, then 2 miles south. (Paved access road, primitive camping, picnic shelter, trash receptacles – Burleigh County Park Board).

47. GRANER BOTTOMS (SUGAR LOAF) – 19 miles south of Mandan on ND Highway 1806 then 1 mile east, or about 3 miles north of Huff. (Paved access road, fish cleaning facility, developed and primitive camping, security lights, picnic shelter, trash receptacles, RV dump station – Morton County Park Board).

48. MACLEAN BOTTOMS (GUN RANGE) – 14 miles south of Bismarck on ND Highway 1804, then 2 miles south. (Paved access road, primitive camping, security lights, picnic shelter, trash receptacles – Burleigh County Park Board).

49. HAZELTON – 31 miles southeast of Bismarck on ND Highway 1804, or 13 miles west and 2 miles north of Hazelton. Campground located just to the south of the boat ramp. (Paved access road, primitive camping, security lights, picnic shelter, trash receptacles – U.S. Army Corps of Engineers).

50. FORT RICE – 28 miles south of Mandan on ND Highway 1806, then .5 miles east. (Paved access road, fish cleaning facility, primitive camping, security lights, picnic shelter, trash receptacles – Morton County Park Board).

51. WALKER BOTTOMS (PRAIRIE KNIGHTS MARINA) – 10 miles south of the Cannonball River on ND Highway 1806, then 3.5 miles east. (Gravel access road, fish cleaning facility, developed and primitive camping, security lights, picnic shelter, trash receptacles, lodging, telephone, RV dump station – Prairie Knights Casino).

52. NORTH BEAVER BAY – 13 miles west of Linton on ND Highway 13, then 3 miles west, 1 mile north on a gravel road. (Gravel access road, no restrooms, no courtesy docks – U.S. Army Corps of Engineers).

53. BEAVER BAY – 13 miles west of Linton on ND Highway 13, then 2 miles south on ND Highway 1804. (Paved access road, fish cleaning facility, developed and primitive camping, security lights, picnic shelter, trash receptacles, concession, telephone, RV dump station – U.S. Army Corps of Engineers).

54. JENNERVILLE (RIVERY) – 13 miles west of Linton on ND Highway 13, then 6.5 miles south on ND Highway 1804, and 3.5 miles west at Rivery turnoff. (Gravel access road, no restrooms – U.S. Army Corps of Engineers).

55. FORT YATES – North edge of Fort Yates. (Paved access road, primitive camping, picnic shelter, trash receptacles – U.S. Army Corps of Engineers).

56. CATTAIL BAY (WINONA) – 10 miles west of Strasburg, 1 mile south, 7 miles west, then 1 mile north on ND Highway 1804, 2 miles west, 2 miles south, 1 mile west. (Gravel access road, primitive camping, picnic shelter, trash receptacles, concession – U.S. Army Corps of Engineers).

57. LANGEIERS BAY – 10 miles west of Strasburg, 1 mile south, 7 miles west, then 11 miles south on ND Highway 1804, and .75 miles west. (Paved access road, fish cleaning facility, primitive camping, security lights, trash receptacles – Emmons County Park Board).

Lake Sakakawea Roadway Paving Estimate

Page 1 of 1

Hot Bituminous Paving and Incidentals

County Special Assessment District 200x-xx

XXXXXX County, North Dakota

Item No.	Description	Unit	Quantity	Unit Price	Total
1	Mobilization	LS	1	\$20,000.00	\$20,000.00
2	Remove, Stockpile, and Respread Topsoil for seeding	Acre	4.6	\$2,500.00	\$11,500.00
3	Remove Existing Fence (1)	LF	5,280	\$0.60	\$3,168.00
4	Unclassified Excavation & Embankment (2)	CY	2,740	\$4.50	\$12,330.00
5	Subgrade Preparation	SY	16,425	\$1.50	\$24,637.50
6	Class 5 Gravel for 3" Base	Ton	2,750	\$20.00	\$55,000.00
7	2-Inch Asphalt Concrete Base Course	Ton	1,575	\$110.00	\$173,250.00
8	2-Inch Asphalt Concrete Surface Course	Ton	1,575	\$110.00	\$173,250.00
9	Bituminous Tack Coat	Gal	725	\$1.40	\$1,015.00
10	Bituminous Seal Coat	Gal	4,250	\$2.30	\$9,775.00
11	Seal Chips (30 lb/sy)	Ton	220	\$70.00	\$15,400.00
12	Striping	LF	5,280	\$4.00	\$21,120.00
13	ROW Acquisition (3)	Acre	10.2	\$2,500.00	\$25,500.00
14	NDPDES Permits and Erosion Control	LS	1	\$1,000.00	\$1,000.00
15	Utility Relocation (4)	LF	1,000	\$19.00	\$19,000.00
16	Traffic Control	LS	1	\$1,500.00	\$1,500.00
17	Fenced Barbed Wire - 3 Strand	LF	5,280	\$1.60	\$8,448.00
18	Drill Seeding	Acre	4.6	\$1,100.00	\$5,060.00
Total Construction =					\$580,953.50

The following general assumptions were made for estimating purposes:

- (1) Only 1/2 of the ROW is fenced and would require removal and replacement
- (2) Two areas of 3.5' x 2' for 1 mile need to be excavated and placed on shoulders of road
- (3) \$500.00/acre is a cost attributable to surveying to relocate property corners as part of construction
- (4) Complete removal and relocating the line Single Pole 3 phase power - one side of roadway
- (5) No signage is included in the cost estimate
- (6) Contingencies are included due the reconnaissance level of estimate being provided

Contingency, Legal, & Administrative (15%) = \$87,143.03

Engineering (15%) = \$87,143.03

Grand Total Project = \$755,239.55

Lake Sakakawea

Location	Ramp Type-Elev: Top/Bottom	Status	Managing Agency, Contact Person, Phone
Beaver Bay COE LW	P-1828.7/1807	Usable	COE, Linda Phelps, 654-7411
Beulah Bay	P-1852.5/1799	Usable	Beulah Pk. Bd., Bev Sullivan, 873-5852
Camp of the Cross	P-1819/1805	Usable	Luth. Bible Camp, Tyler Olson, 337-2246
Charging Eagle Bay 1st LW	P-1829.2/1808	Usable	Three Aff. Tbs., Jim Mossett, 880-1203
Dakota Waters Resort	P- 1853.4/1802.6	Usable	Beulah Pk. Bd., Kelvin Heinsen, 873-5800
Deepwater Creek 1st LW	P-1838.5/1808	Usable	COE, Linda Phelps, 654-7411
Douglas Creek LW	P- 1831/1801	Usable	COE, Linda Phelps, 654-7411
Douglas Creek (Ziegler's)	P-1851/1820.6	Usable	COE, Linda Phelps, 654-7411
Fort Stevenson St. Pk. LW	P-1821.8/1790	Usable	NDPR, Dick Messerly, 337-5576
Four Bears Pk. N LW	P-1827.2/1811	Usable	Three Aff. Tbs., Alan Chase, 627-4018
Garrison Creek Cabin Site	P- 1857/1802	Usable	Garrison Cabin Assc., Percy Radke, 337-2247
Government Bay Main	P-1857.2-1809	Usable	COE, Linda Phelps, 654-7411
Hale Marina	C-1833/1814	Usable	Three Aff. Tbs., James Hale, 759-3666
Hazen Bay 1st LW	P-1841.4/1816.11	Usable	Hazen Pk. Bd., Joel Amundson, 748-5958
Hazen Bay (Walleye Bay)	P-1830.6/1804.7	Usable	Hazen Pk. Bd., Joel Amundson, 748-5958
Indian Hills 2nd LW	P-1829/1804.5	Usable	Pk.& Rec/Tbs., Kelly Sorge, 743-4122
Lewis & Clark St. Pk. LW	P-1830.74/1817	Usable	NDPR, Al Larson, 859-3071
Little Beaver Bay Main	P-1858.5/1818.03	Usable	Williams CPB, Beth Innis, 572-6373
Lunds Landing 3rd LW	P-1825.6/1817	Usable	COE, Linda Phelps, 654-7411
McKenzie Bay E	P-1850.9/1796	Usable	McKenzie Marine, Rhonda Logan, 579-3366
New Town	P-1853.7/1816.9	Usable	New Town Pk. Bd., Dusty Rhoads, 627-3900
Parshall Bay W Ramp	P-1850.7/1817.1	Usable	Mountrail CPB, Rick Folden, 898-1157
Pouch Point 1st LW	P-1835/1819	Usable	Three Aff. Tbs., Annette Youngbird, 627-4781
Pouch Point 2nd LW	P-1834.8/1813	Usable	Three Aff. Tbs., Annette Youngbird, 627-4781
Reunion Bay 1st LW	P-1836/1818.5	Usable	COE, Linda Phelps, 654-7411
Reunion Bay 2nd LW	C-1826.6/1806.4	Usable	COE, Linda Phelps, 654-7411
Sakakwea St. Pk. Rodeo	P-1856/1817.4	Usable	NDPR, John Tunge, 487-3315

Bay

Sanish Bay Afterm LW	P-1836/1805	Usable	Afterm Lake Dev., Gerald Afterm, 852-2779
Skunk Creek Rec. Main	P-1840/1806.5	Usable	Three Aff. Tbs., Ken Danks, 290-2841
Sportsmen's Centennial.	P-1831.6/1808.5	Usable	McLean Co., Les Korgel, 462-8541
Steinkes Bay	P-1833.1/1813.4	Usable	NDGF, Bob Frohlich, 328-6346
Tobacco Garden	P-1835.56/1819.14	Usable	McKenzie CPB, Frances Olson, 444-3616
Van Hook W. LW	P-1821.2/1808	Usable	Mountrail CPB, Rick Folden, 898-1157
White Earth Bay Main	P-1850.9/1801	Usable	Mountrail CPB, Greg Gunderson, 755-3277
Wolf Creek Rec. New	P-1848-5/1819	Usable	COE, Linda Phelps, 654-7411
Wolf Creek Rec. 1st LW	P-1833.8/1802.5	Usable	COE, Linda Phelps, 654-7411

Ramp Type: **P**-poured concrete, **S**-slide in metal, **C**-concrete plank and metal. **LW**-low water.

COE-Corps of Engineers. **NDPR**-ND Parks and Recreation Dept. **CPB**-County Park Board

Lake Sakakawea Public Recreation Facilities

		Boat Ramp	Camping (Developed)	Camping (Primitive)	Electrical Hookups	Drinking Water	Showers	Restrooms Flush	Restrooms Vault	Picnic Shelter	Picnic Tables and Grills	Swimming Beach	Playground	Concession	Cabin Rentals	Boat Fuel	Boat Rentals	Dump Station	Fish Cleaning Station	Handicapped Facilities	Telephone Available
1	Downstream Campground		X	X	X	X	X	X	X	X	X		X					X		X	X
2	Tailwaters	X							X										X	X	
3	Intake Picnic Area								X	X	X									X	
4	Spillway Pond	X				X			X	X	X	X	X							X	
5	Spillway Overlook								X	X	X									X	
6	Riverdale Overlook									X	X										
7	Government Bay	X							X										X		
8	Wolf Creek	X		X		X			X	X	X		X					X	X		
9	East Totten Trail	X	X	X	X	X			X		X							X	X	X	X
10	West Totten Trail	X							X											X	
11	Sportsmen's Centennial Park	X	X	X	X	X	X	X	X	X	X		X	X					X	X	X
12	Ft. Stevenson State Park	X	X	X	X	X	X	X	X	X	X	X	X	X	X	X	X	X	X	X	X
13	Douglas Creek	X		X		X			X		X										
14	Indian Hills	X	X	X	X	X	X	X	X		X			X	X	X	X	X	X	X	X
15	Deepwater	X		X		X			X	X	X										
16	Parshall Bay	X	X	X	X	X	X	X	X	X	X		X	X		X	X	X	X	X	X
17	Van Hook	X	X	X	X	X	X	X	X	X	X		X	X		X			X	X	X
18	Pouch Point	X	X	X	X	X	X	X	X	X	X		X	X				X			
19	New Town Marina	X	X	X	X	X	X	X	X	X	X		X	X		X		X	X	X	X
20	White Earth Bay	X	X	X	X	X			X	X	X			X		X				X	X
21	Little Beaver Bay	X		X					X	X	X										
22	Little Egypt			X		X			X												
23	White Tail Bay (Lunds Landing)	X		X		X	X	X	X		X			X	X	X	X			X	X
24	Lewis & Clark State Park	X	X	X	X	X	X	X	X	X	X		X	X	X	X		X	X	X	X
25	Lake Trenton	X	X	X	X	X	X	X	X	X											
26	American Legion Park	X	X	X	X	X			X	X	X		X								
27	Tobacco Gardens	X	X	X	X	X	X	X	X	X	X		X	X	X	X		X	X	X	X
28	Four Bears	X	X	X	X	X	X	X		X	X		X	X		X		X	X		X
29	Skunk Creek	X		X					X												
30	McKenzie Bay	X	X	X	X	X	X	X	X	X	X		X	X	X	X	X	X	X	X	X
31	Little Missouri Bay	X	X	X	X	X	X		X	X	X		X	X	X	X	X	X	X	X	X
32	Beaver Creek Bay	X		X					X		X										
33	Lake Shore Park (Dakota Waters)	X	X	X	X	X	X	X		X	X		X	X	X	X	X	X	X	X	X
34	Beulah Bay	X	X	X	X	X	X	X	X	X	X							X	X	X	X
35	Hazen Bay	X	X	X	X	X	X	X	X	X	X								X	X	X
36	Lake Sakakawea State Park	X	X	X	X	X	X	X	X	X	X	X	X	X	X	X	X	X	X	X	X