

Fargo-Moorhead Metro-Area Flood Diversion Project

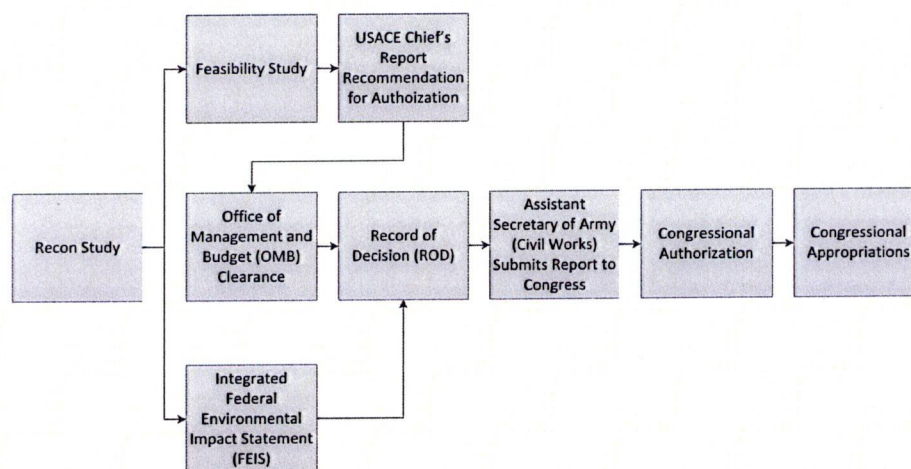
FEDERAL PROCESS & POST-ROD ANALYSIS

*Presentation to
ND Water-Related Topics Overview Committee
April 19, 2012*

1 April 19, 2012



USACE Project Process



2



Record Of Decision (ROD)- What it Signifies

Record of Decision(ROD):

- ♣ Finding that the “project is technically feasible, economically justified, in accordance with environmental statutes”
- ♣ Project serves the public interest and outweighs adverse effects
- ♣ Completes the National Environmental Policy Act (NEPA) process

....Signed by Assistant Secretary of the Army for Civil Works

3

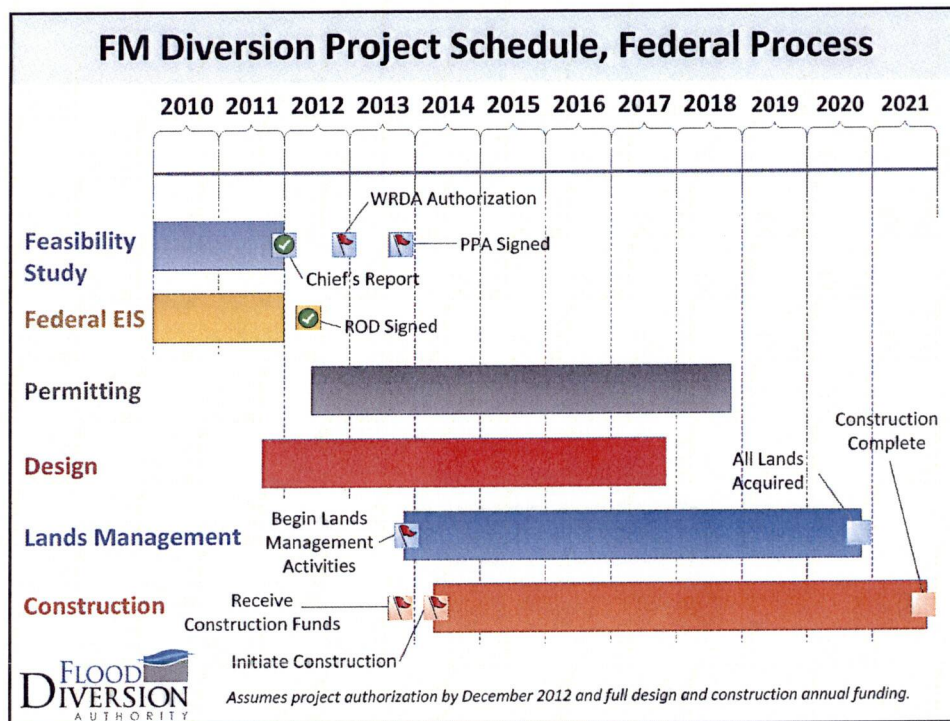


FM Diversion Project Moved Rapidly Through the Federal Process

*President's Budget started design in 2011 & 2012.
Funding for design expected to continue until design complete*

- ♣ July, 2011: Feasibility Report and Fed EIS Completed
- ♣ Dec, 2011: USACE Chief's Report signed
- ♣ Mar 28, 2012: Office of Management & Budget clearance
- ♣ Apr 3, 2012: Record of Decision (ROD) signed
- ♣ April, 2012: Forwarded to Congress for Congressional authorization for construction





FM Diversion Project Setting the Standard for Federal Projects!

CORPS AND FEDERAL LEADERS CITE FM DIVERSION AS THE MODEL

- 💧 High velocity USACE Feasibility Study and rapid approval in the federal process
- 💧 Excellent Corps/Local Project Sponsor partnership, collaboration with State/Federal agencies, and local engineering capabilities
- 💧 Recognized by federal leaders as highly needed flood risk reduction project with Regional and National benefits
- 💧 Second highest funded project for design in President's FY-13 Budget
- 💧 Garnered 20% of President's FY-13 Design Budget

Mega Project – Mega Activities!

Authority/Sponsor

- Board Members
- Finance Committee
- Outreach Committee
- Land Management Committee
- Administrative/Advisory Staff
- Technical Advisory Staff

U.S. Army Corps (USACE)

- Five Corps Districts & dozens of staff
- Multiple Designs Underway

Local Consultants

- Multiple Local Engineering Firms Providing Design & Lands Support

Program Management Consultant (PMC)

- Equivalent of 14 Full Time Employees assisting in managing the Program

7

FLOOD
DIVERSION
AUTHORITY

Post- ROD Analysis: In Response to Public Input

Post-ROD Analysis

The Diversion Authority/Local Sponsors will conduct evaluations of potential modifications to the project, some of these modifications are outside of the Corps process.

8

FLOOD
DIVERSION
AUTHORITY

Post-ROD Analysis: Path Forward

Corps and Local Sponsor, Local Engineering Firms Joint Efforts and Goals

- Increased flows through town
- VE 13, move inlet slightly north
- Evaluate levees and dikes for affected communities (Comstock and Christine)
- Conduct analysis while continuing design of project on schedule
- Continue to improve overall project value with goals to improve reliability, reduce impacts, and reduce costs.

9



Flows Thru

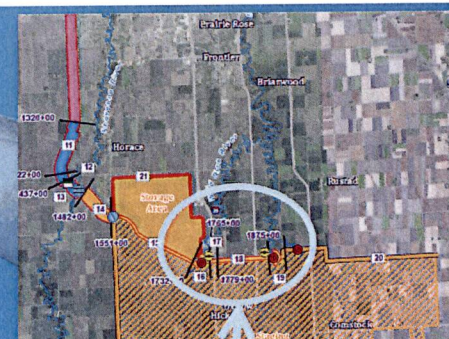


Increased Flows thru Town (Authority/Sponsor Lead)

- Provides early flood protection benefits prior to project completion
- Reduces frequency of need to operate the diversion channel
- Reduces duration of water in staging/storage area
- Ability to handle historic summer peak events avoiding crop damage



10



Red River Channel Inlet (VE 13) (Authority/Sponsor Lead)

- Evaluating opportunity to move the diversion channel inlet alignment north
- Potentially eliminate Wolverton Creek structure and identify cost savings

Post-ROD Analysis: Path Forward

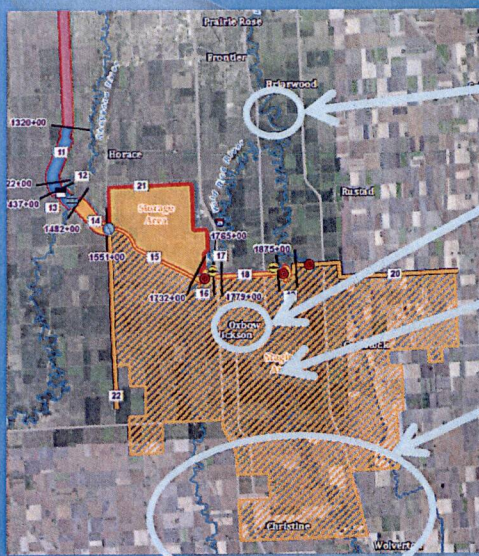
Diversion Authority-only Efforts and Goals

- 💧 Conduct Preliminary Post-ROD Analysis by October 2012
 - 💧 Move Diversion inlet south of Oxbow
 - 💧 Move Diversion inlet north of confluence of Red and Wild Rice Rivers
 - 💧 Evaluate upstream retention
 - 💧 Evaluate levees/ring dikes for Oxbow area

11



Post-ROD Analysis



Move Diversion inlet
north of Wild Rice River

Protect Oxbow area with
levees/ring dike

Move Diversion inlet
south of Oxbow

Evaluate upstream
retention

12

