

NDGFD Potential Land Acquisitions as of December 31, 2018

North Dakota Game and Fish Department Potential Land Acquisitions

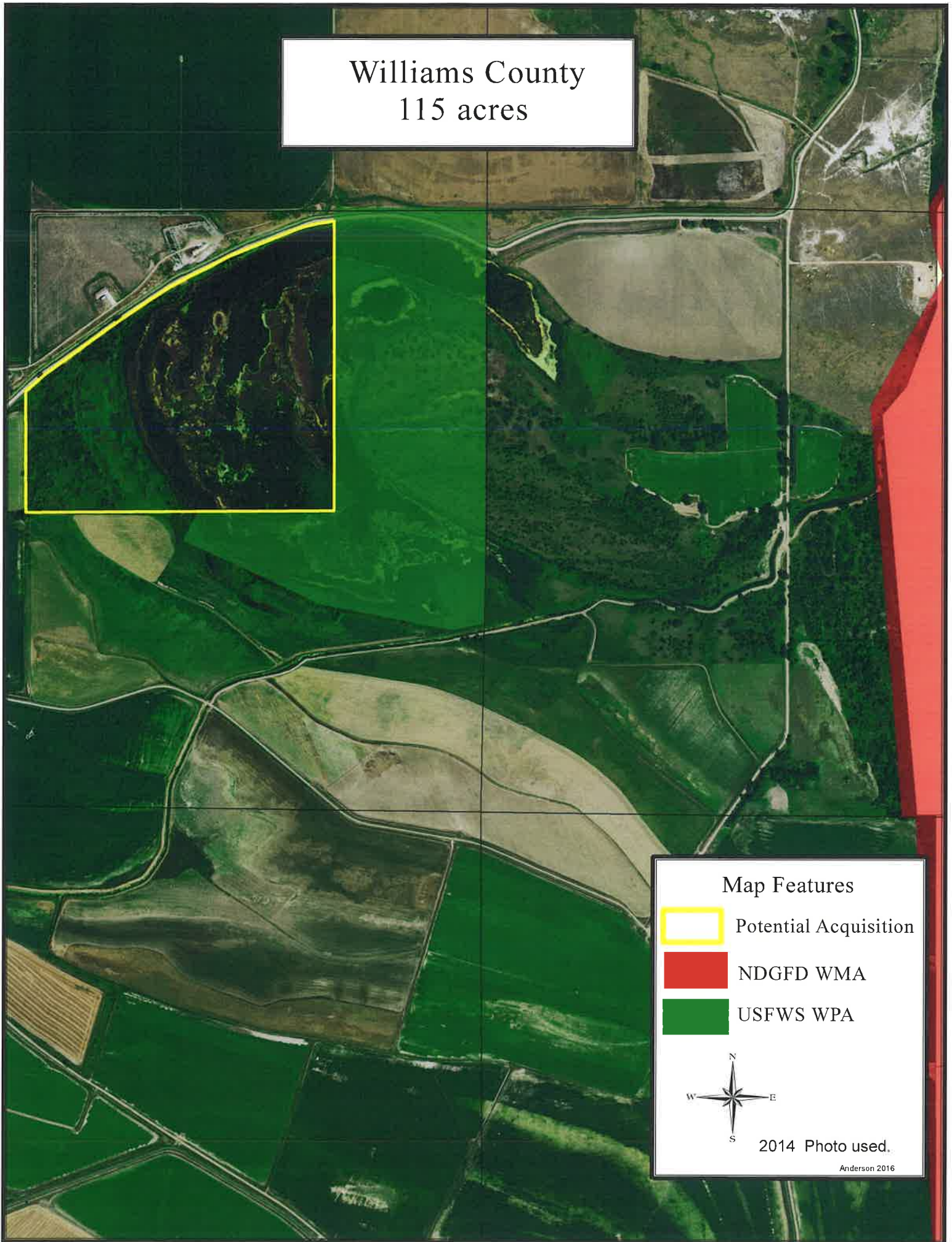
As of Dec. 31, 2020

The Department has been contacted by individuals with the following tracts. They are interested in selling these tracts to the Department to be maintained as Wildlife Management Areas (WMA). Some opportunities may arise throughout the biennium that could get higher priority. The following list is in no particular order.

- 1) Williams County—115 acres—Next to WPA near Trenton WMA (floodplain and cattails).
- 2) Walsh County—80—Addition to Joliet Ferry WMA.
- 3) Sheridan County – 20 acres – Addition to Lonetree WMA.
- 4) Pembina County – 360 – Dunklee WMA addition. EWP on this piece with no Ag. use allowed.
- 5) Adams County – 480 acres – Land is currently in CRP
- 6) Hettinger County – 80 acres – Land is currently in CRP
- 7) Walsh County—140 acre—Along Red River
- 8) McLean County—160 acres—Mostly pastureland with small
- 9) Dunn County— 950 acres — Mostly Pastureland near Killdeer WMA
- 10) Nelson County — 87 acres — Hoghaug WMA addition on Stump Lake

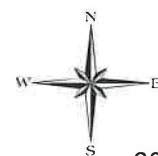
A map for each potential acquisition is included.

Williams County 115 acres



Map Features

-  Potential Acquisition
-  NDGFD WMA
-  USFWS WPA





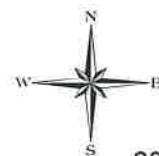
2014 Photo used.

Anderson 2016

Walsh County
80 acres

Map Features

-  Potential Acquisition
-  NDGFD WMA



2014 Photo used.

Anderson 2016

Lonetree Addition 20 acres



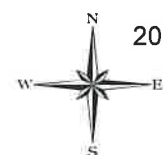
Map Features



Offer



NDGFD WMA



2012 Photo used.

Anderson 2014

Duncklee WMA Addition 360 acres



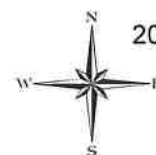
Map Features



Offer

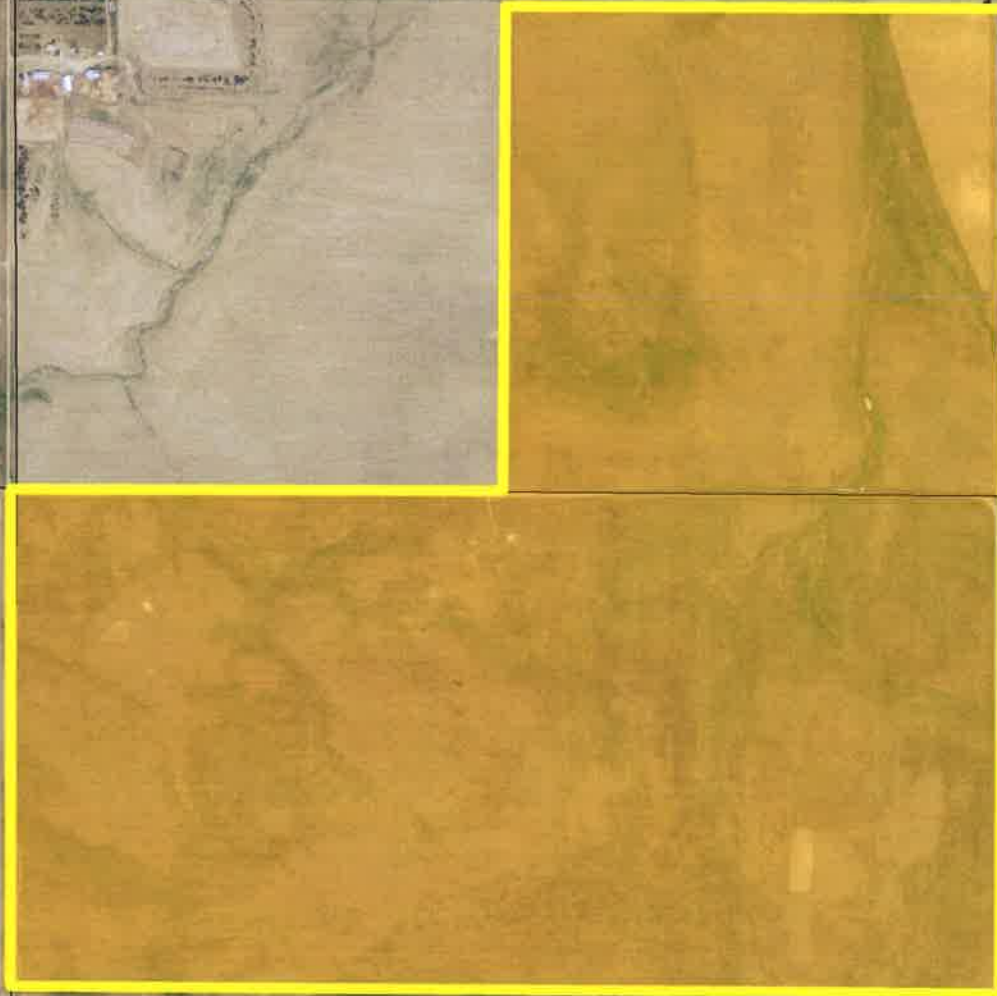


NDGFD WMA



2012 Photo used.

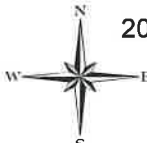
Adams County
480 acres



Map Features

 Offer

 NDGD PLOTS

 2012 Photo used.

Anderson 2014

Hettinger County
80 acres



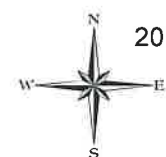
Map Features



Offer



NDGD PLOTS



2012 Photo used.

Anderson 2014

Walsh County
140 acre

Red River

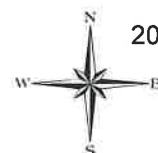
Map Features



Offer



NDGD PLOTS



2012 Photo used.

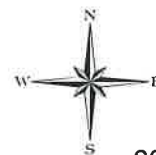
Anderson 2014

McLean County Potential Acquisition Approximately 160 acres

Butte, ND

Map Features

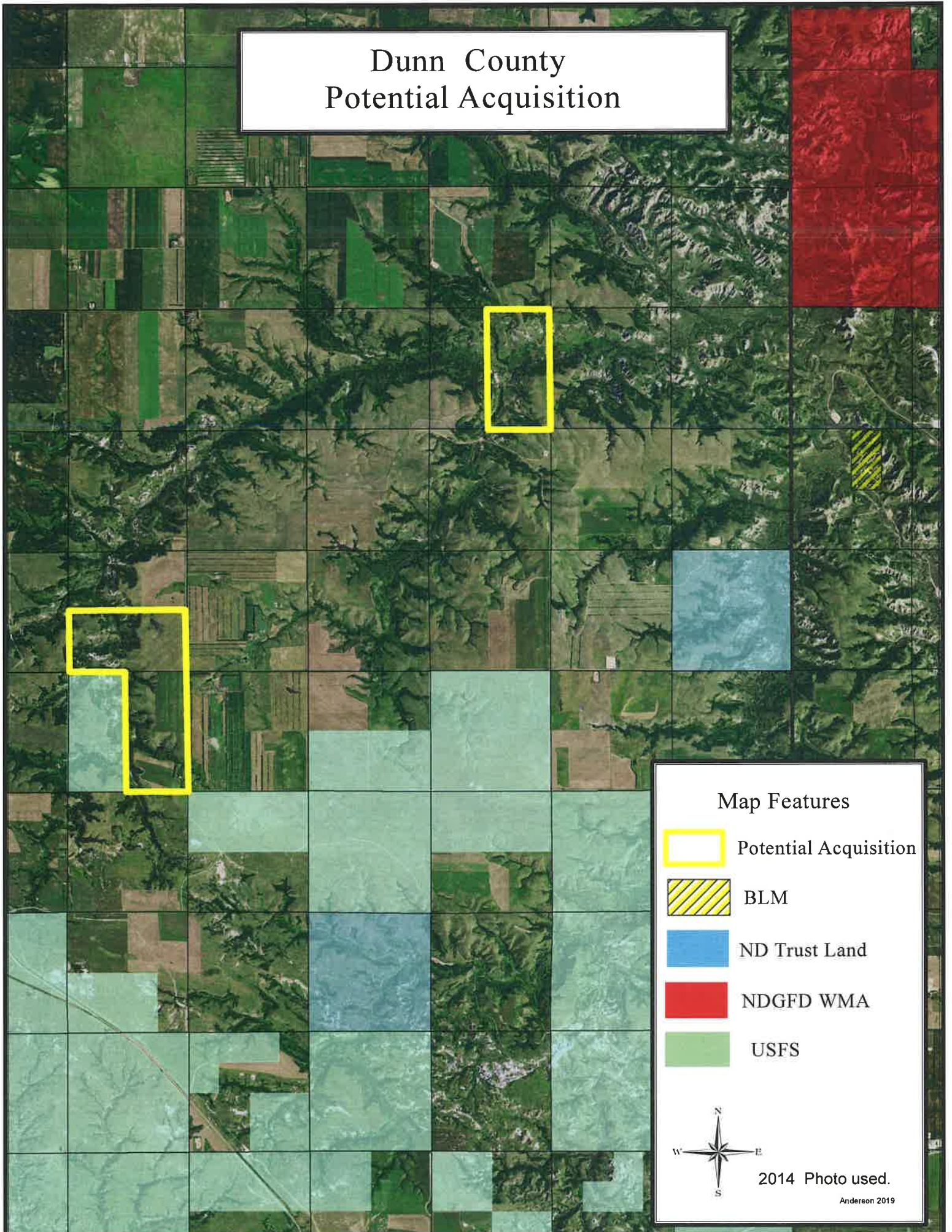
-  Potential Acq.
-  USFWS WPA








2014 Photo used.

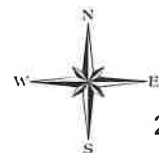
Anderson 2016

Dunn County Potential Acquisition



Map Features

-  Potential Acquisition
-  BLM
-  ND Trust Land
-  NDGFD WMA
-  USFS




2014 Photo used.

Anderson 2019

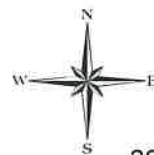
Nelson County
87 acres

Stump Lake

Map Features

 Potential Acquisition

 NDGFD WMA



2014 Photo used.

Anderson 2016