

CAMPUS RELIGIOUS FREEDOM

THE PROBLEM

FRATERNITIES AND SORORITIES are *welcome* on campus and are *allowed* to pick their own leaders based on certain criteria.

RELIGIOUS GROUPS are *not welcome* on campus and are *not allowed* to pick their own leaders based on certain criteria.

THE UNIVERSITY OF
DOUBLE STANDARDS



A small but growing number of colleges are effectively kicking student religious groups off campus with policies that prohibit common-sense criteria for selecting group leaders. So, a Jewish faith group cannot require that its president be Jewish or even agree with core Jewish teachings.

Student religious groups provide a much-needed sense of belonging for young people at a time when many feel all alone and are struggling to find their place in the world. Colleges should embrace these welcoming communities, not turn them away.

COMMON SENSE, PLEASE!



To be the president of the Chess Club, you must know the rules of the game.

To be the head of the American Medical Association, you must be a physician.

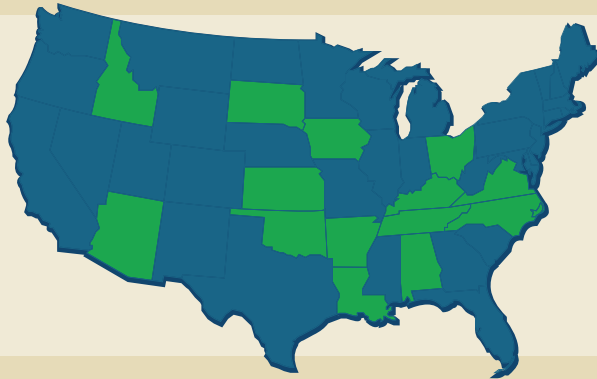
To be the President of the United States, you must be at least 35 years old.

It's important for leadership positions to have certain criteria: it's common sense!

CONTINUED ON BACK

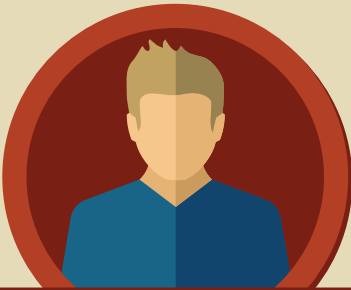
STATES THAT MAKE THE GRADE

Some states are addressing the problem by proactively passing smart bipartisan campus religious freedom legislation.



**BUT ONLY
30%
HAVE DONE THIS**

WHO LOSES OUT?



STUDENTS



RELIGIOUS GROUPS

Lose opportunities for community and a sense of belonging

Lose opportunities for volunteer work and charity outreach

Lose an understanding of self-worth outside of academic achievement

Lose access to campus resources given to other groups

Lose access to low-cost university spaces for meetings and fellowship

Lose access to standard on-campus membership tools