

A photograph of the Century Center building, a modern structure with a large glass facade and a stone base. The building is set against a clear blue sky with a few wispy clouds. In the foreground, there is a grassy area with some small trees and blue light poles. The text "CENTURY CENT" and "1600 E CENTURY AVENUE" is visible on the stone base of the building.

# ND PUBLIC EMPLOYEES RETIREMENT SYSTEM

Budget – 68<sup>th</sup>  
Legislative Assembly

# NDPERS BOARD



Mona Rindy  
Chair



Casey Goodhouse  
Member Elected



Adam Miller  
Member Elected



Jason Grueneich  
Member Elected



Yvonne Smith  
Member Elected



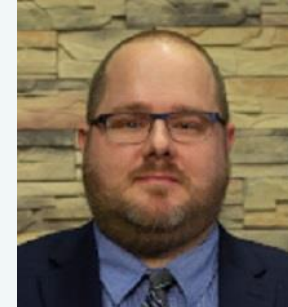
Representative  
Gretchen Dobervich



Representative Greg  
Stemen

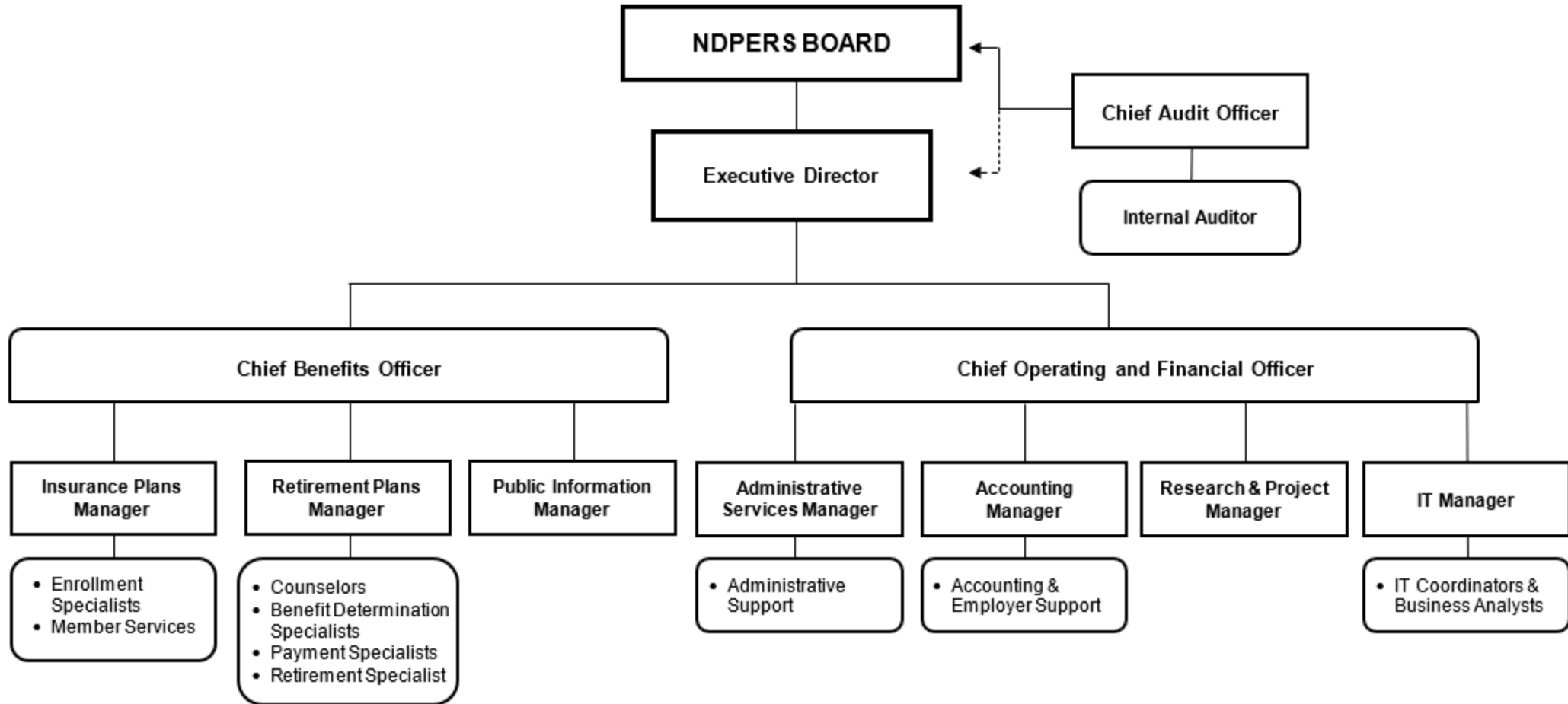


Claire Ness  
AG Appointee



Dirk Wilke – State  
Health Designee

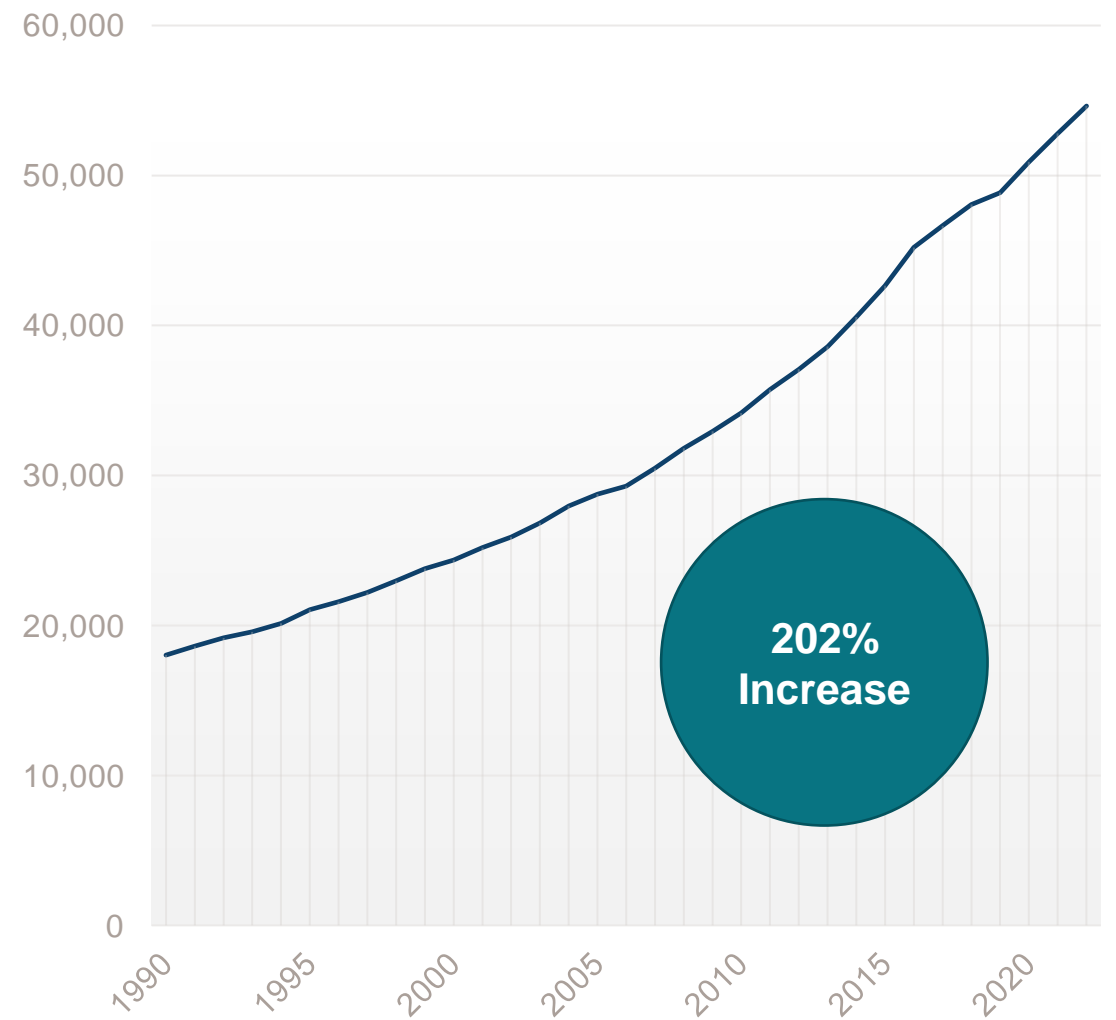
# ORGANIZATIONAL CHART



January 2022	<b>RETIREMENT PROGRAMS</b> <b>MANAGED AND ADMINISTERED BY NDPERS</b>								
	<i>TOTAL</i>	<i>Main</i>		<i>Public</i>	<i>Highway</i>	<i>Job</i>	<i>DEFINED</i>	<i>DEFERRED</i>	<i>HEALTH</i>
	<i>RETIREMENT</i>	<i>System</i>	<i>Judges</i>	<i>Safety</i>	<i>Patrol</i>	<i>Service</i>	<i>CONTRIBUTION</i>	<i>COMP</i>	<i>CREDIT</i>
									<i>(RHIC)</i>
<b>PARTICIPATING EMPLOYERS</b>									
State	97	97	1	5	1	1	97	97	97
Counties	52	52		20				34	52
School Dist	129	129						28	129
Cities	90	90		22				39	90
Others	90	90		1				46	90
TOTAL	<b>458</b>							<b>244</b>	<b>458</b>
<b>EMPLOYEES</b>									
State	10,361	9,992	57	79	151	0	82	6,841	8,674
Counties	4,242	3,695		546			1	821	3,557
School Dist	7,351	7,350					1	105	5,113
Cities	2,814	2,265		546			3	419	2,273
Others	846	834		12				341	641
Subtotal	25,614	24,136	57	1,183	151	0	87	8,527	20,258
Retirees	14,000	13,361	63	151	135	181	109		<b>13,697</b>
Subtotal	<b>39,614</b>	<b>37,497</b>	<b>120</b>	<b>1,334</b>	<b>286</b>	<b>181</b>	<b>196</b>	<b>8,527</b>	<b>33,955</b>
Deferred Members	15,020	14,477	1	493	49	0			7,112
TOTAL	<b>54,634</b>	<b>51,974</b>	<b>121</b>	<b>1,827</b>	<b>335</b>	<b>181</b>	<b>196</b>	<b>8,527</b>	<b>41,067</b>

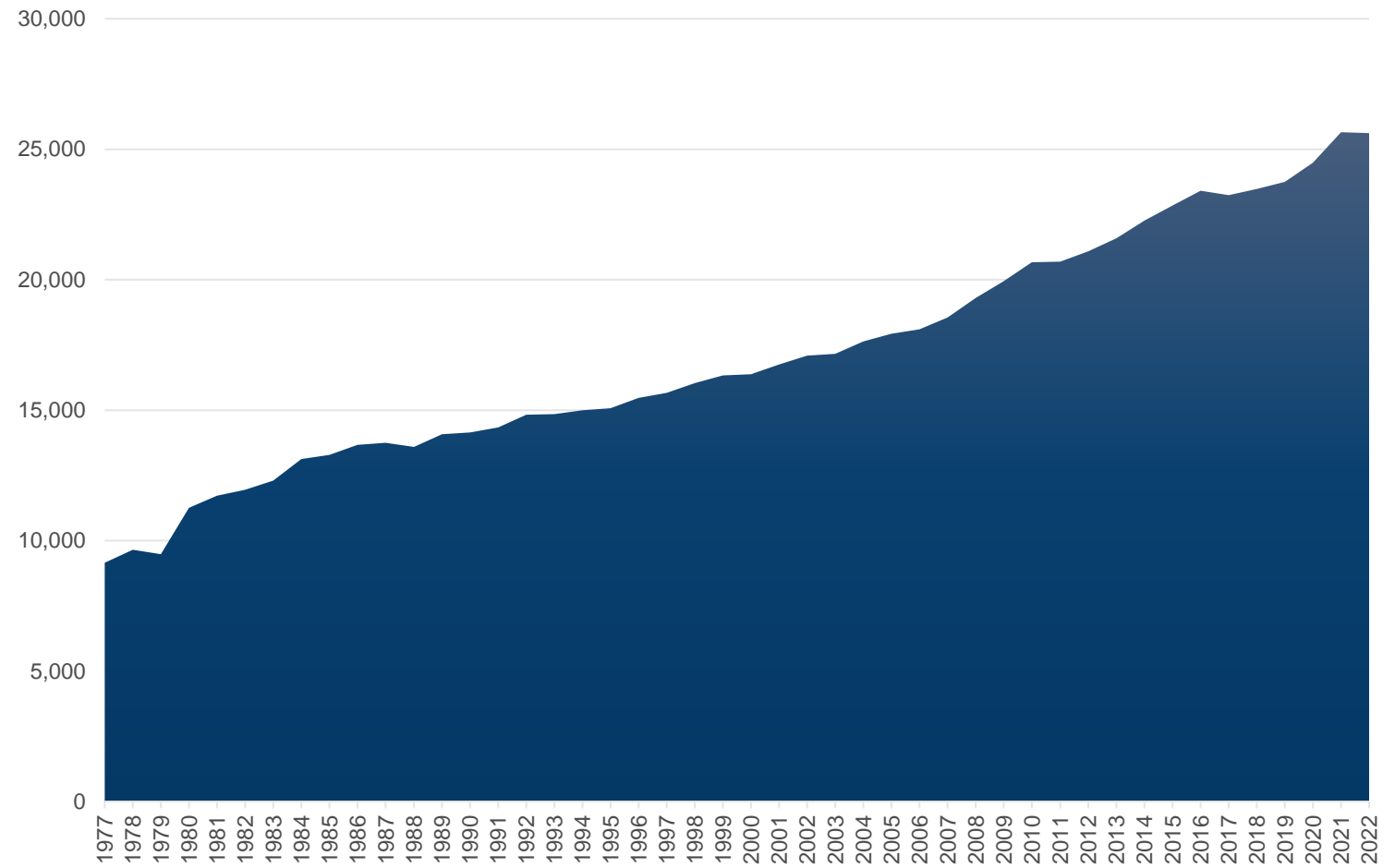
# RETIREMENT PLAN MEMBERSHIP

*Includes actives, inactives, retirees, and beneficiaries*



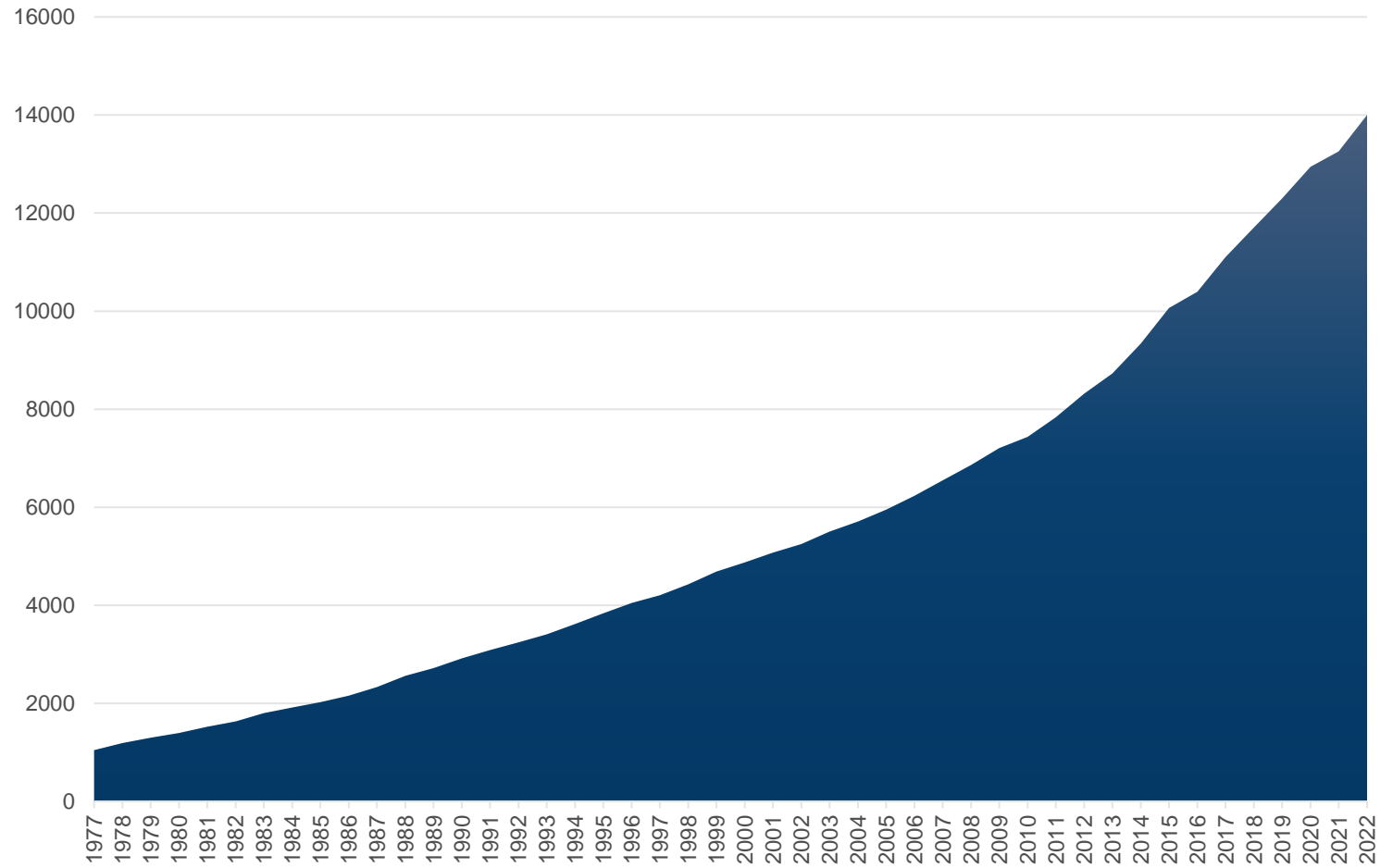
**ACTIVE  
MEMBERS IN  
NDPERS  
RETIREMENT  
SYSTEM**

*Includes members in Main, Judges, and Public Safety*



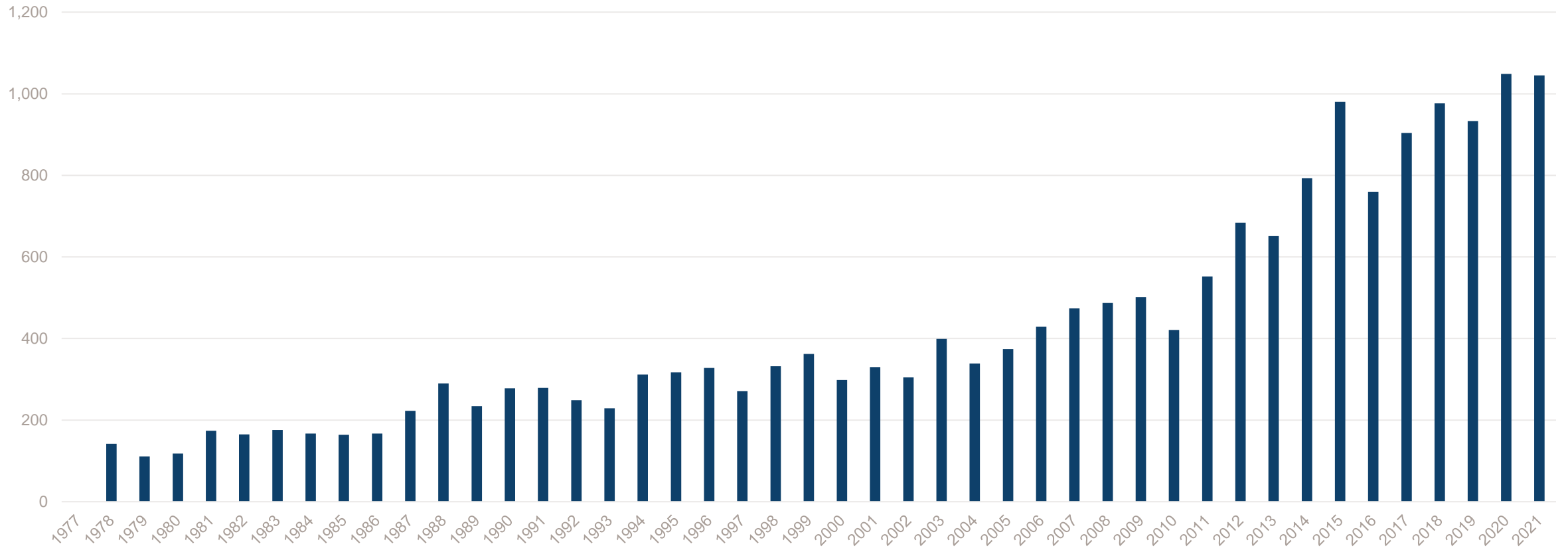
## RETIREES IN NDPERS RETIREMENT SYSTEM

*Includes members in Main, Judges, and Public Safety*



# NEW PENSIONS

*Includes actives members in Main, Judges, and Public Safety*



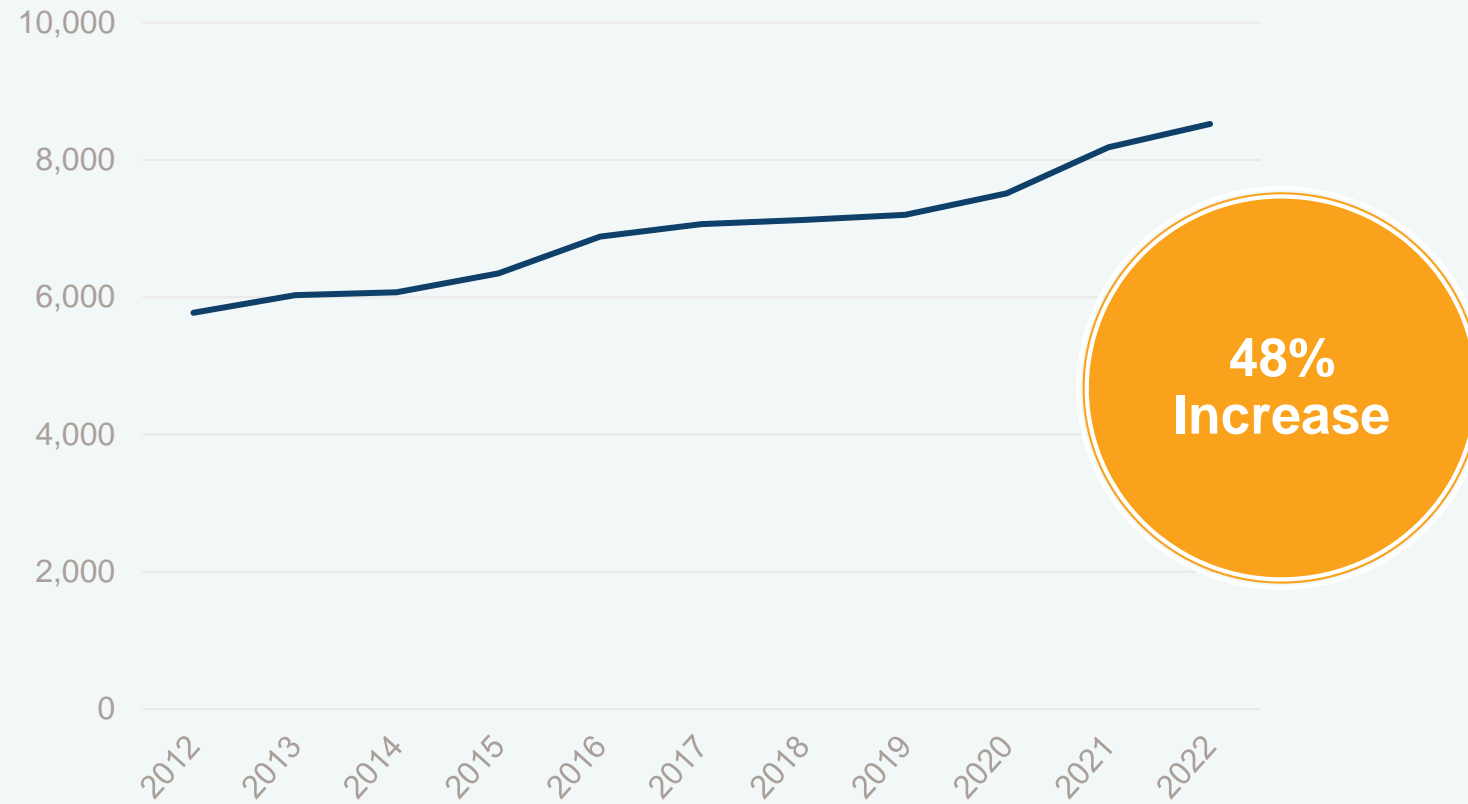


# Upcoming Eligible Retirees

---

	Age 65	Rule of 85	Total
Currently eligible as of June 2022	1,090	1,175	2,265
Newly eligible as of June 2023	284	305	589
Newly eligible as of June 2024	323	288	611
Newly eligible as of June 2025	378	276	654
Newly eligible as of June 2026	380	287	667
Newly eligible as of June 2027	341	305	646

# DEFERRED COMPENSATION PLAN ACTIVE MEMBERSHIP



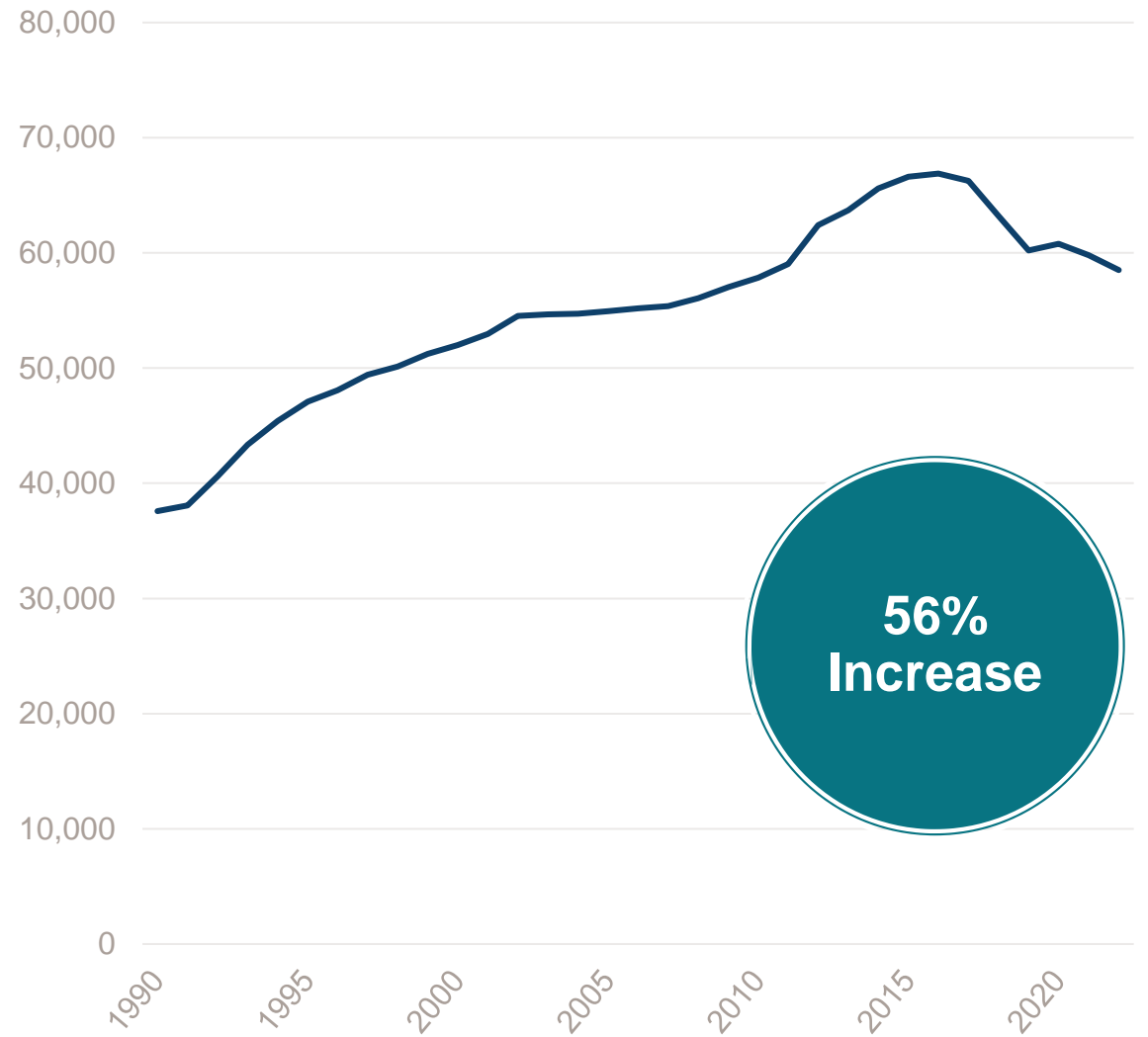
January 2022

## GROUP INSURANCE PROGRAMS MANAGED AND ADMINISTERED BY NDPERS

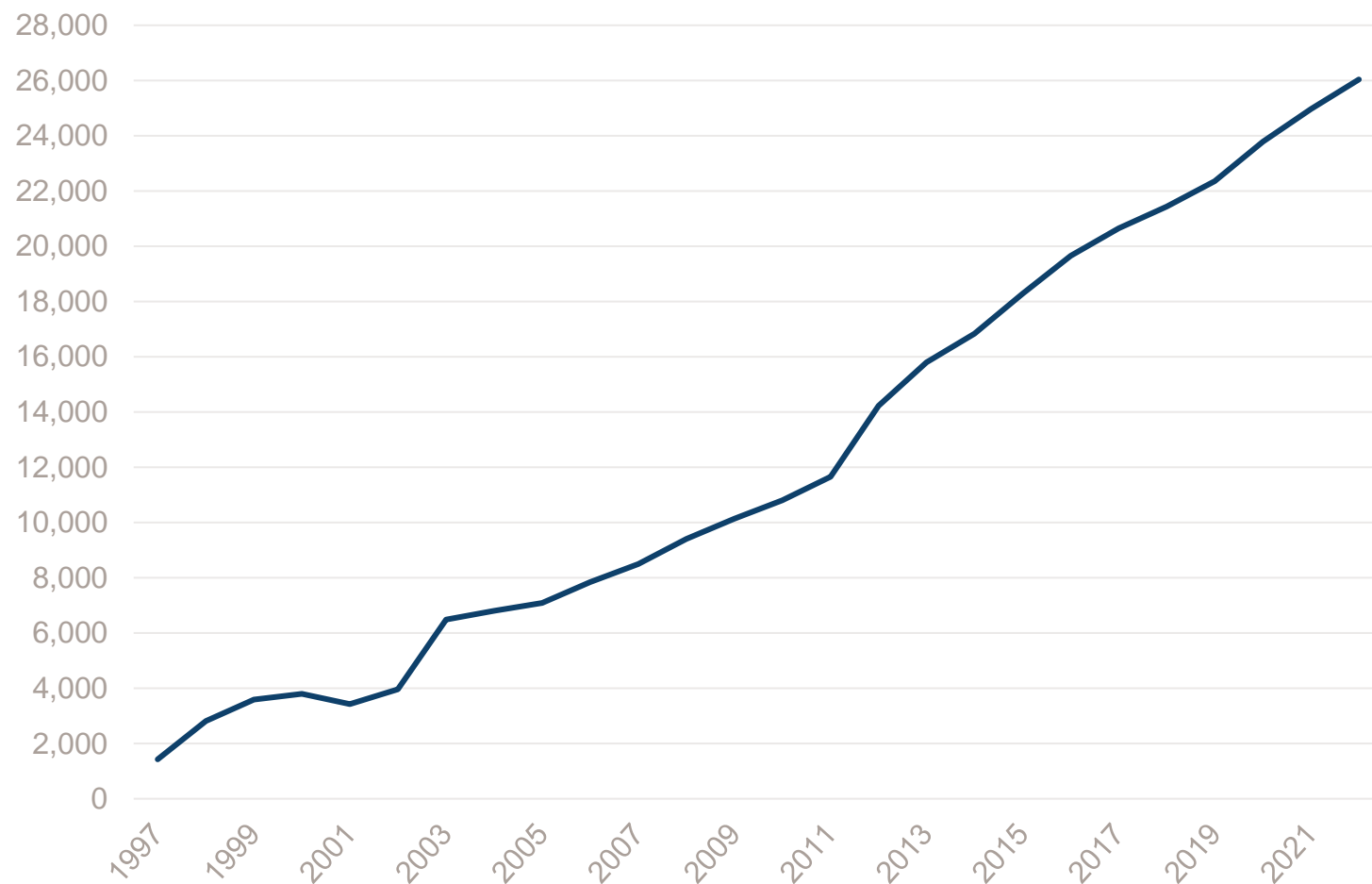
	<i>HEALTH</i>	<i>LIFE</i>	<i>DENTAL</i>	<i>VISION</i>	<i>EAP</i>	<i>FLEXCOMP</i>
<b>PARTICIPATING EMPLOYERS</b>						
State	97	97	97	97	97	81
Counties	34	33				
School Dist	22	13				
Cities	30	29				
Others	50	32	20	20	20	5
TOTAL	<i>233</i>	<i>204</i>	<i>117</i>	<i>117</i>	<i>117</i>	<i>86</i>
<b>EMPLOYEES</b>						
State	14,362	15,027	8,879	9,314	15,074	2,363
Legislators	133	137				
Counties	1,618	2,807				
School Dist	797	100				
Cities	659	249				
Others	483	418			273	45
Retirees	6,835	3,216	3,981	3,779		
COBRA	138		41	44		
TOTAL	<i>25,025</i>	<i>21,954</i>	<i>12,901</i>	<i>13,137</i>	<i>15,347</i>	<i>2,408</i>
<b>Covered Lives</b>	<i>58,504</i>					



# HEALTH PLAN MEMBERSHIP



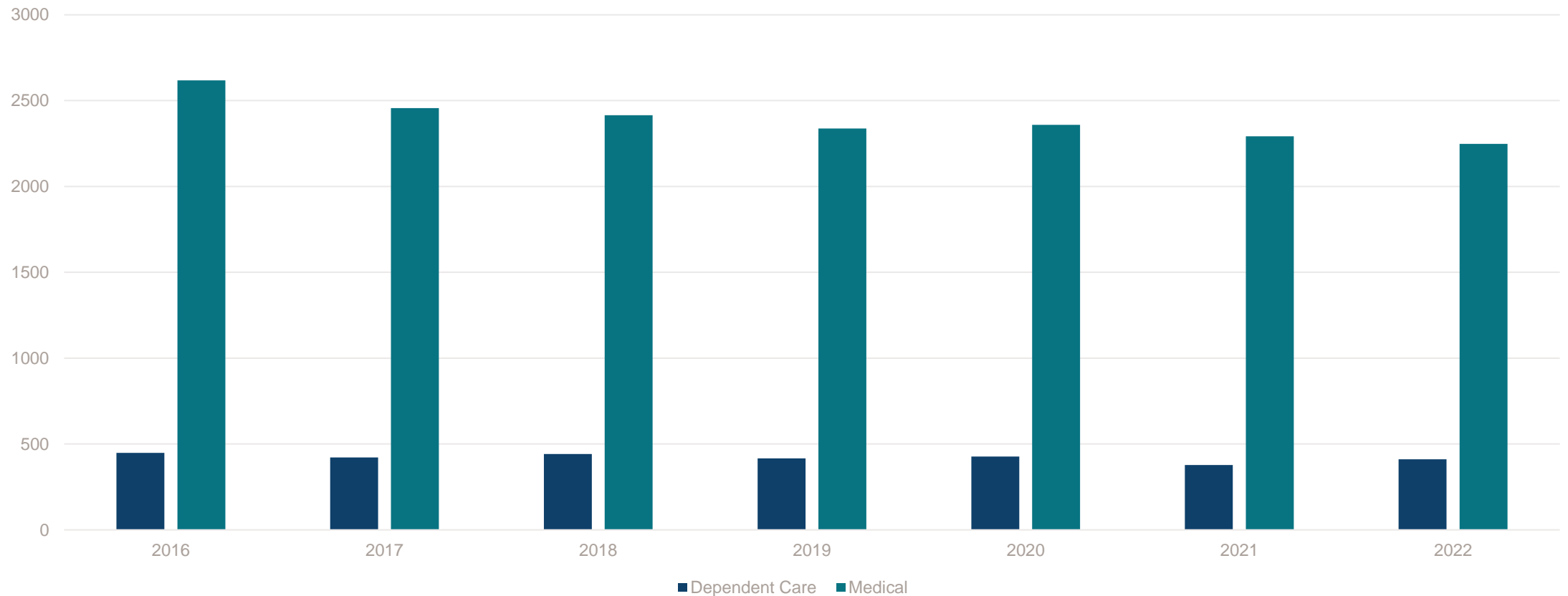
# Dental & Vision Insurances Membership



**1,713%  
Increase**

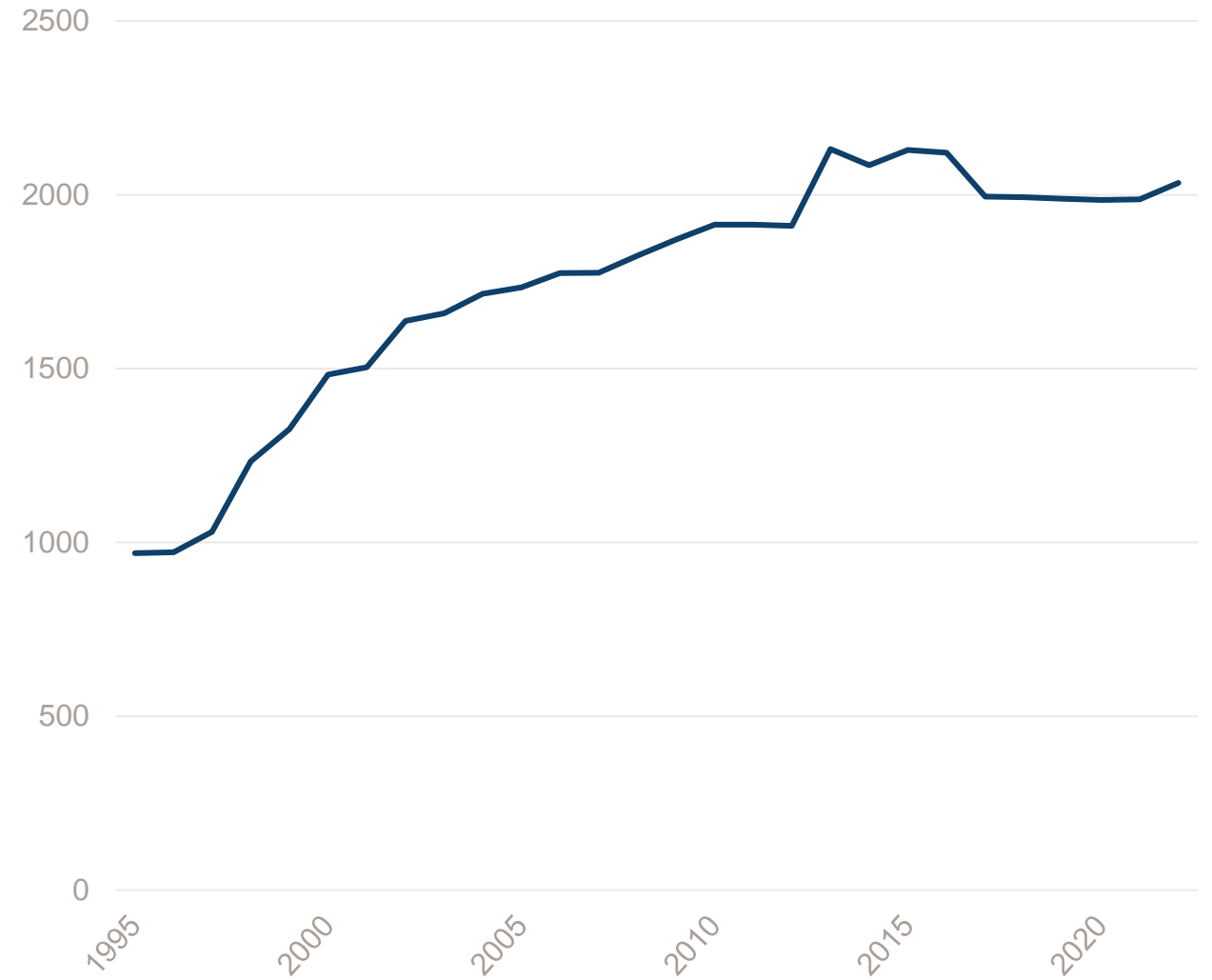
# FSA Participation

*The Dependent Care and Medical Flexible Spending Accounts (FSA) are part of the FlexComp Program*



# TOTAL Participating Employers in NDPERS Plans

---



Year	# of responses	Courtesy received from NDPERS Staff.	Promptness of NDPERS response.	Information was properly explained.	Information easy to understand.
2015	464	3.82	3.67	3.73	3.62
2016	478	3.83	3.73	3.75	3.62
2017	540	3.83	3.76	3.69	3.58
2018 Sent via email	1,084	3.76	3.59	3.63	3.56
2019	2,392	3.75	3.48	3.63	3.59
2020	2,066	3.76	3.51	3.66	3.62
2021	2,268	3.74	3.49	3.60	3.56
2022 As of November	1,855	3.72	3.47	3.58	3.52

## MEMBER EXPERIENCE

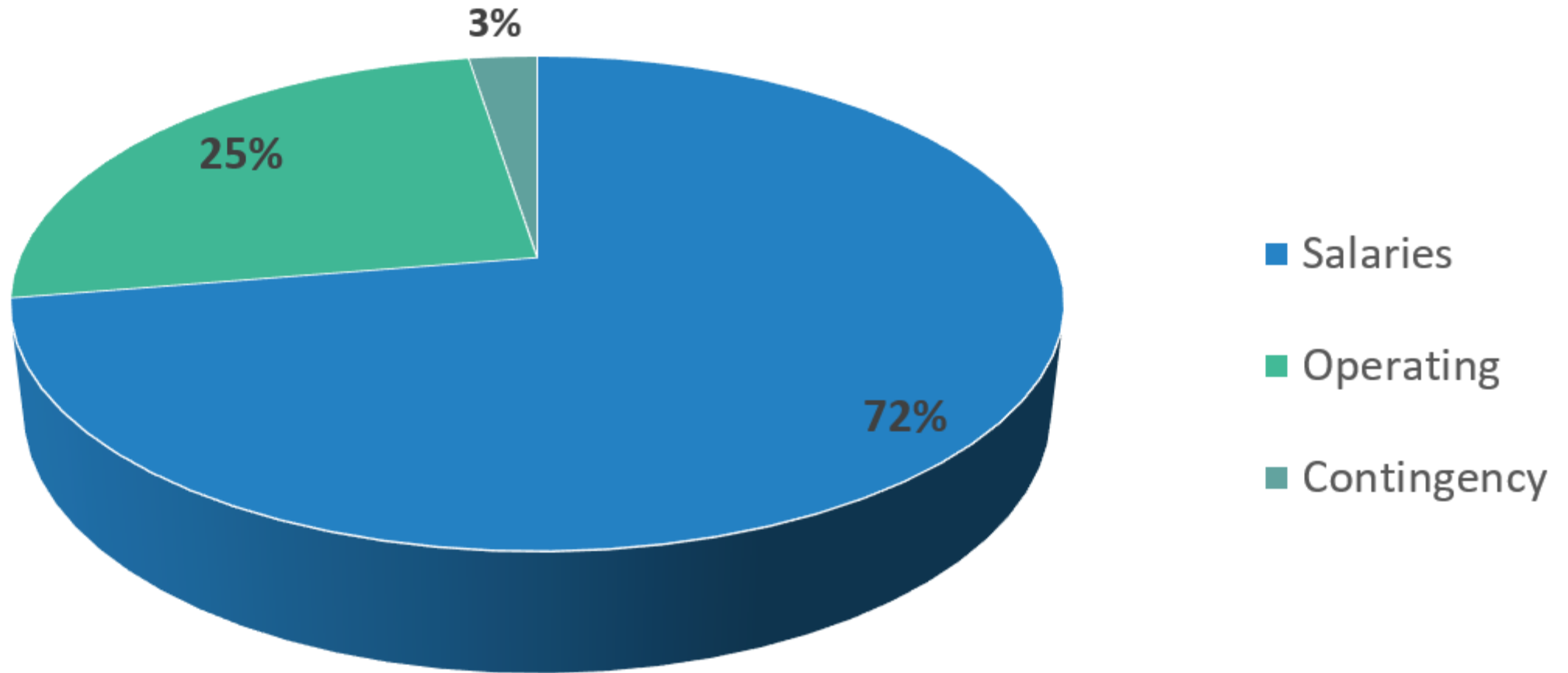


# NDPERS BUDGET

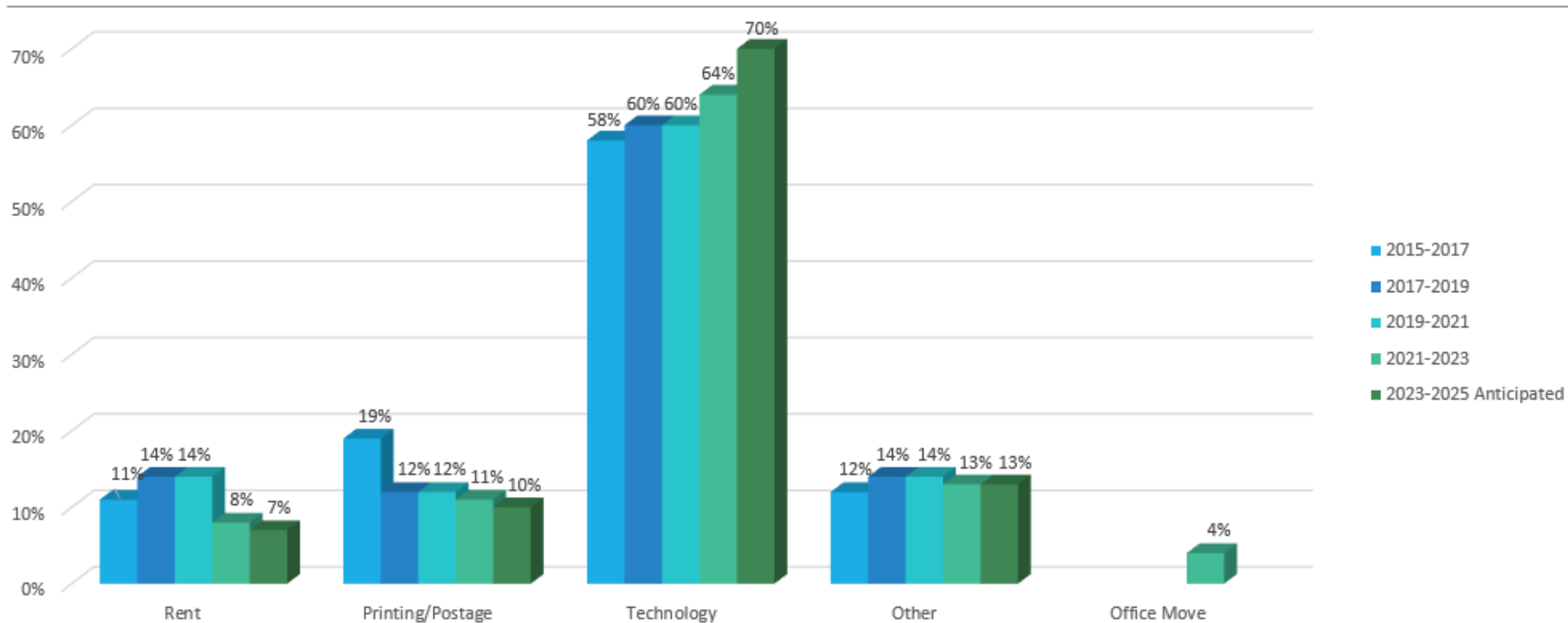


	<b>2021-23 Appropriation</b>	<b>One-Time Expenditures</b>	<b>2023-2025 Legislative Base Budget</b>	<b>% Increase/ (Decrease)</b>
Salaries & Wages	7,209,060	-	7,209,060	0.0%
Operating Expenses	2,500,736	(104,500)	2,396,236	(4.2%)
Capital Expenditures	257,600	(257,600)	-	(100.0%)
Contingencies	250,000	-	250,000	0.0%
Total Special Funds	10,217,396	(362,100)	9,855,296	(3.5%)
FTE	35.5		35.5	

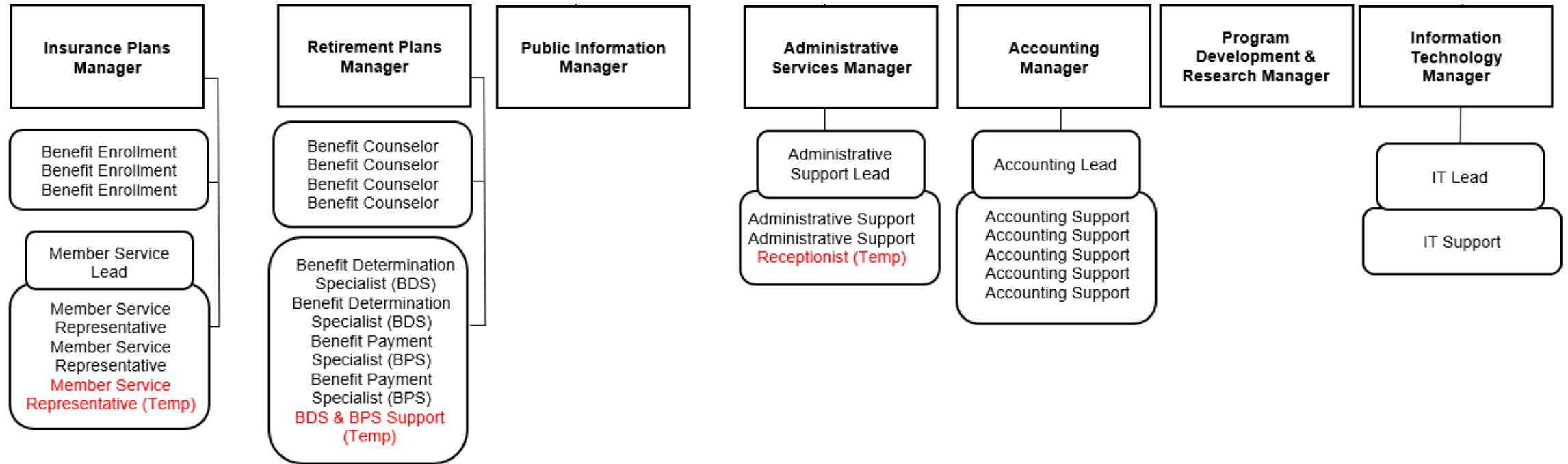
# NDPERS Budget Allocation





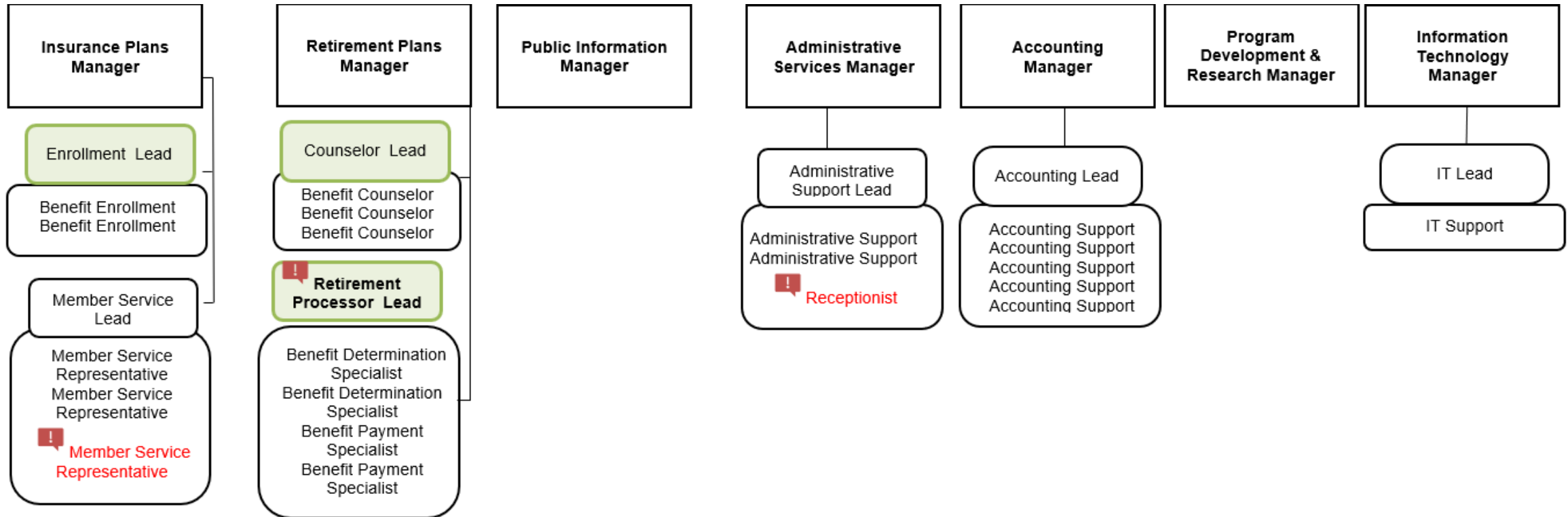


# BUDGET: OPERATING EXPENSES



# Current Departmental Organization

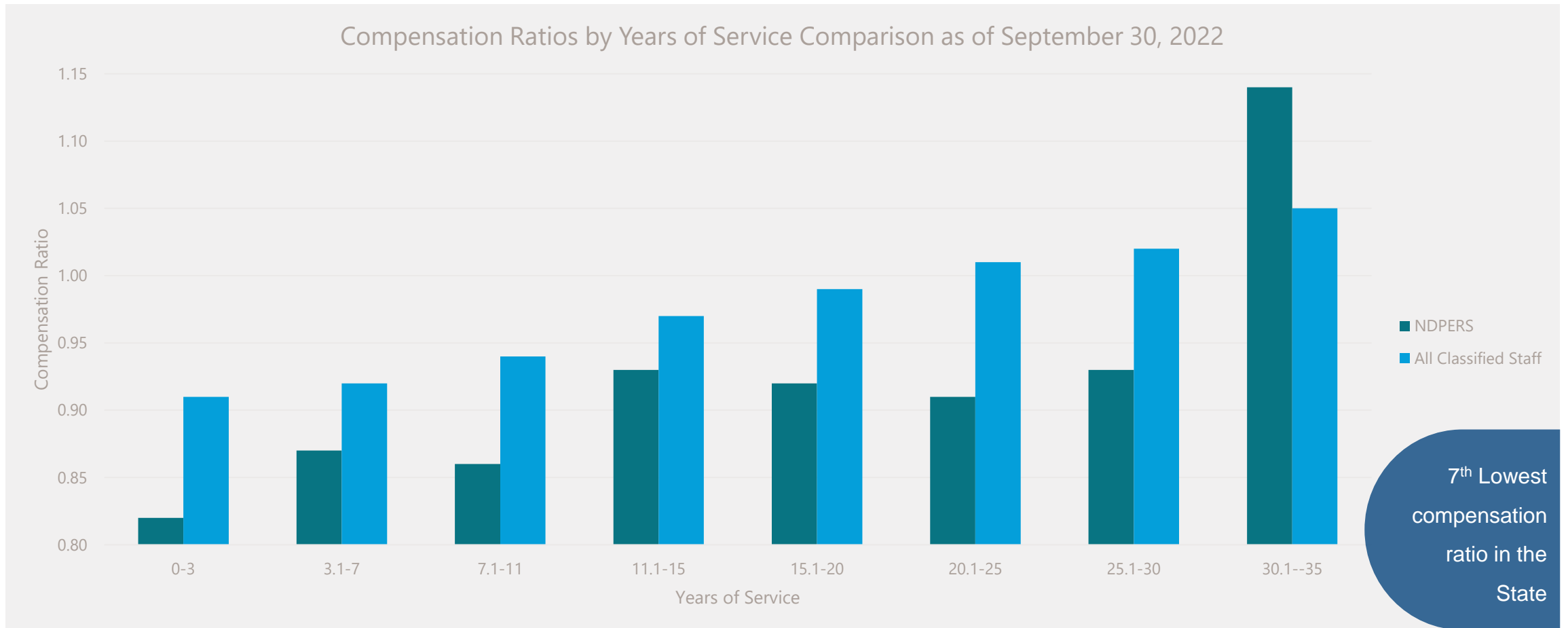
# Departmental Structure Goal



# Executive Recommendation

	<b>2021-23 Legislative Base</b>	<b>Executive Recommendation Adjustments</b>	<b>2023-2025 Executive Recommendation</b>	<b>% Increase/ (Decrease)</b>
Salaries & Wages	7,209,060	1,792,119	9,001,179	24.9%
Operating Expenses	2,396,236	275,101	2,671,337	11.5%
Contingencies	250,000	-	250,000	
Total Special Funds	9,855,296	2,067,220	11,922,516	21.0%
FTE	35.5	4.0	39.5	

## Changes to the Executive Recommendation Staff Equity Package: \$720,000





# FTE AUTHORITY

## ADDRESS CUSTOMER SERVICE NEEDS

Year	# of responses	Courtesy received from NDPERS Staff.	Promptness of NDPERS response.	Information was properly explained.	Information easy to understand.
	464	3.82	3.67	3.73	3.62
2016	478	3.83	3.73	3.75	3.62
	540	3.83	3.76	3.69	3.58
2018 Sent via email	1,084	3.76	3.59	3.63	3.56
	2,392	3.75	3.48	3.63	3.59
2020	2,066	3.76	3.51	3.66	3.62
	2,268	3.74	3.49	3.60	3.56
2022 As of November	1,855	3.72	3.47	3.58	3.52



**QUESTIONS?**